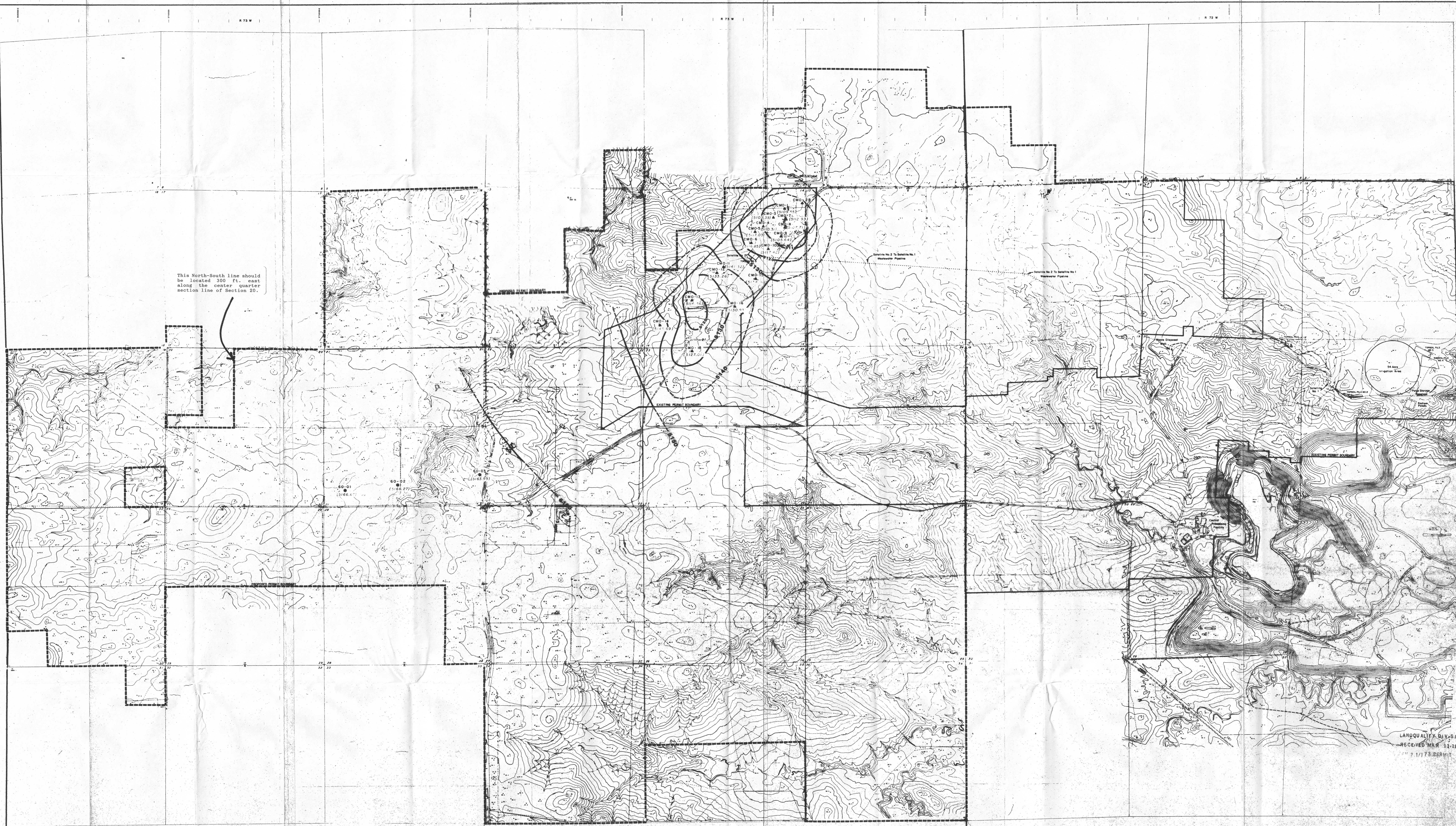


This North-South line should be located 300 ft. east along the center quarter section line of Section 20.



- LEGEND**
- EXISTING PERMIT BOUNDARY
 - - - PROPOSED PERMIT BOUNDARY
 - WATER LEVEL ELEVATION
 - - - INFERRED WATER LEVEL ELEVATION



LAND QUALITY DIVISION
RECEIVED MAR 11 1982
7/1/73 PERMIT

PLATE D6-3

POWER RESOURCES, INC.

AD. 800 100
CONVERSE COUNTY, WYOMING
HIGHLAND URANIUM PROJECT
WEST HIGHLAND AREA
60 SAND POTENTIOMETRIC
SURFACE MAP

DATE	BY	REV.