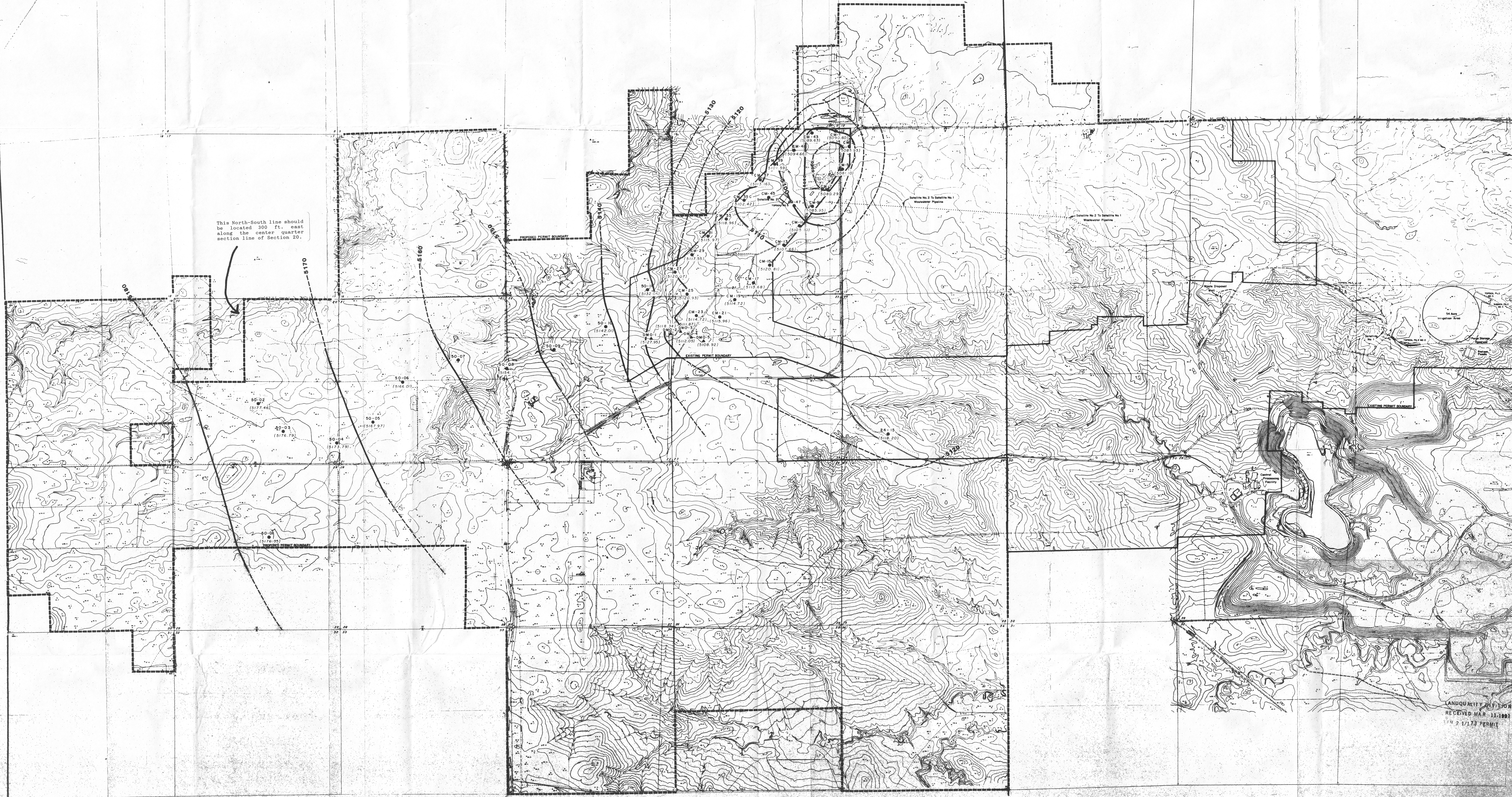
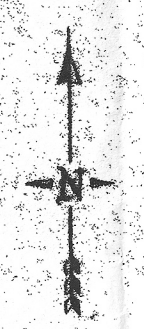
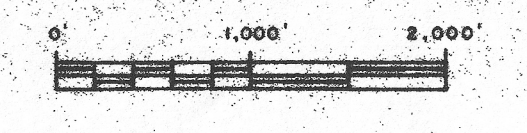


This North-South line should be located 300 ft. east along the center quarter section line of Section 20.



- LEGEND**
- EXISTING PERMIT BOUNDARY
 - - - PROPOSED PERMIT BOUNDARY
 - WATER LEVEL ELEVATION
 - - - INFERRED WATER LEVEL ELEVATION



LANDQUALITY DIVISION
RECEIVED MAR 11 1993
2 1/73 PERMIT

PLATE D6-2
POWER RESOURCES, INC.
 HIGHLAND URBAN PROJECT
 WEST HIGH LINE HIGHWAY
 50 SAND POTENTIOMETRIC
 SURFACE MAP