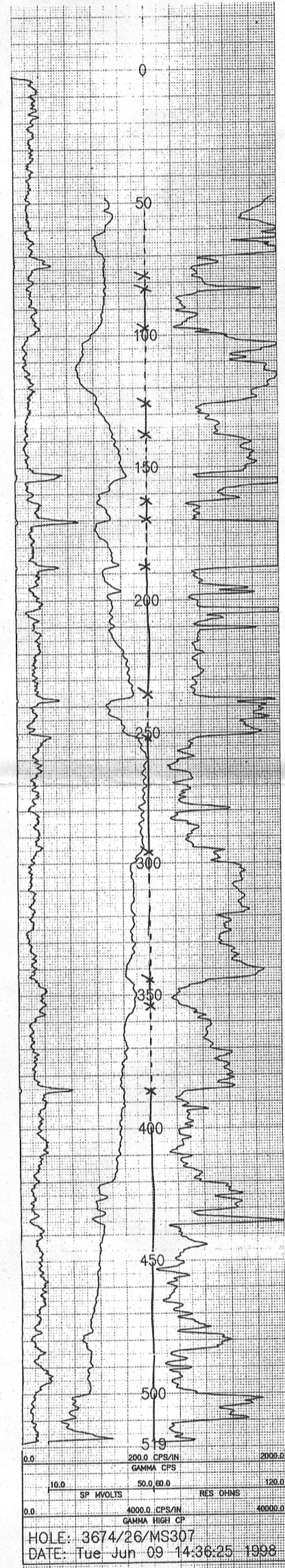


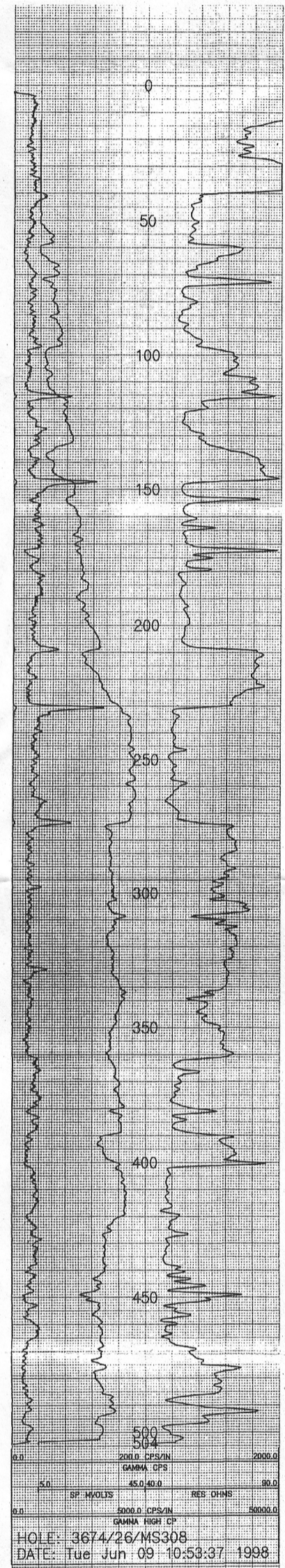
Permit 633  
 Volume 2  
 Appendix D5  
 Page D5-29  
 0301  
 MS 307-308  
 MS 312-313

3674/26/0301



HOLE: 3674/26/MS307  
 DATE: Tue Jun 09 14:38:25 1998

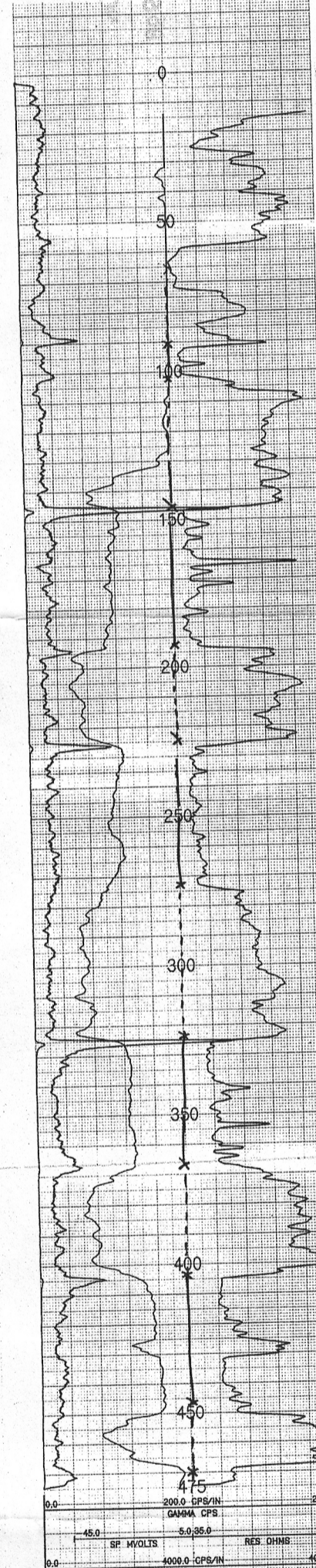
3674/26/MS307



HOLE: 3674/26/MS308  
 DATE: Tue Jun 09 10:53:37 1998

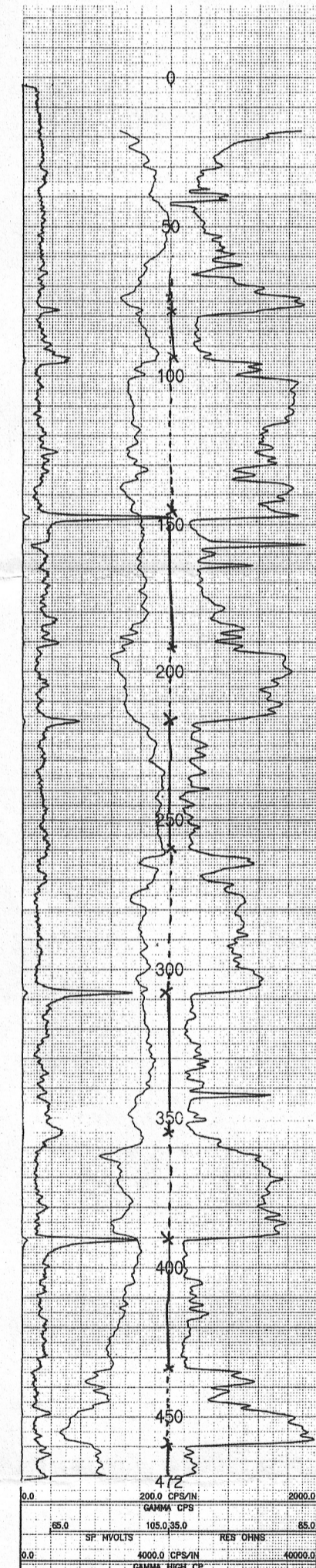
3674/26/MS308

810038-023  
 JUN 23 11:40 RECEIVED  
 RECEIVED IN THE  
 GEOLOGICAL SURVEY  
 WASHINGTON, D.C.



HOLE: 3674/26/MS312  
 DATE: Tue Jun 23 17:38:09 1998

3674/26/MS312



HOLE: 3674/26/MS313  
 DATE: Tue Jun 23 16:16:32 1998

3674/26/MS313