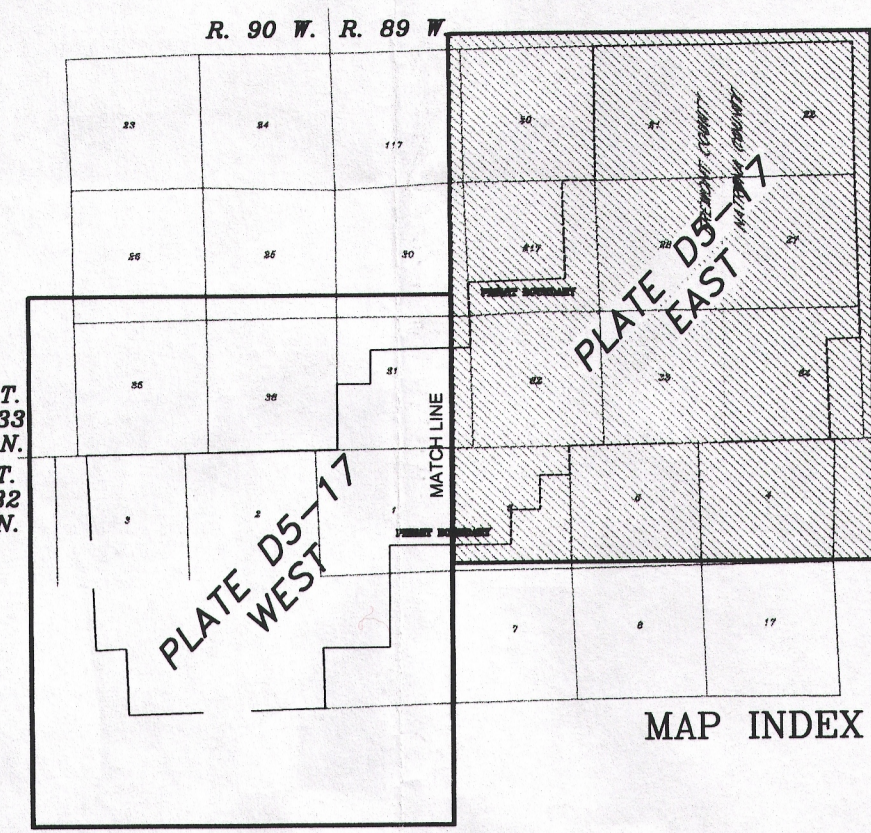


SEE APPENDIX C AND PLATE C-1 FOR MINOR BOUNDARY CHANGE TO INCLUDE INTO THE PERMIT THAT PORTION OF THE "AHL ROAD" TO BE USED FOR SITE ACCESS.



LEGEND

- PERMIT BOUNDARY
- Abandoned Drill Holes
- MINE UNITS
- == ACCESS ROADS & PIPELINES

REVISIONS		
NO.	DATE	BY
1	2/00	BRS
2	6/09	JMW

Cameco Resources
 400 East 1st St. Su 308
 Casper, WY 82601
 Telephone: (307) 237-2128

Abandoned Drill Hole Map
Plate: D5-17E
 Gas Hills

SIZE	SCALE	DEPARTMENT	REV
0	1:500	LAND & EVALUATION	2

Drawing Location: L:\WP\11\NAD\GAS HILLS PERMIT SUBMITTAL 2000\05-17_E-1.DWG