

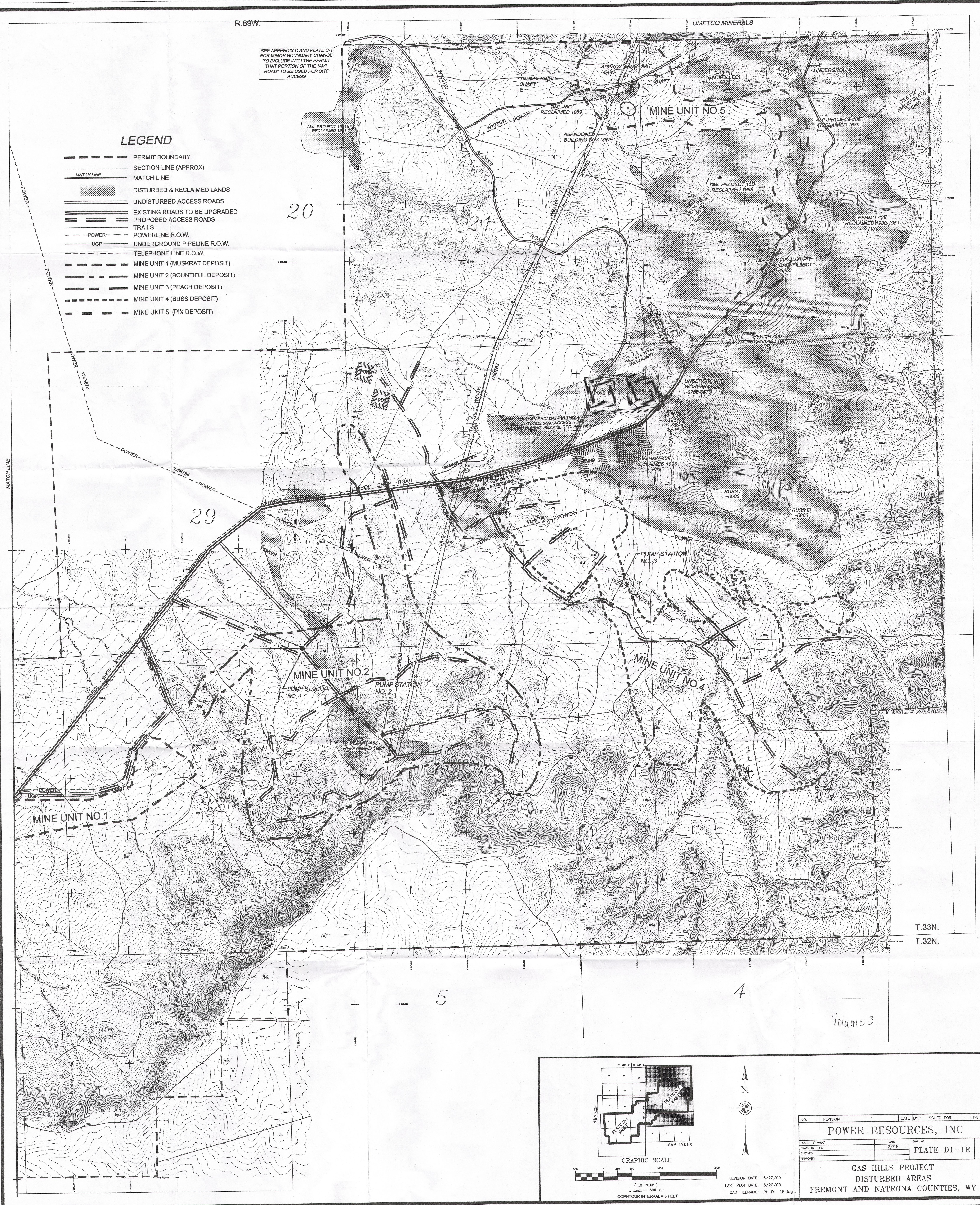
R.89W.

UMETCO MINERALS

SEE APPENDIX C AND PLATE C-1 FOR MINOR BOUNDARY CHANGE TO INCLUDE INTO THE PERMIT THAT PORTION OF THE "MIL ROAD" TO BE USED FOR SITE ACCESS

LEGEND

- PERMIT BOUNDARY
- SECTION LINE (APPROX)
- MATCH LINE
- ▨ DISTURBED & RECLAIMED LANDS
- UNDISTURBED ACCESS ROADS
- EXISTING ROADS TO BE UPGRADED
- PROPOSED ACCESS ROADS
- TRAILS
- POWERLINE R.O.W.
- UGP UNDERGROUND PIPELINE R.O.W.
- TELEPHONE LINE R.O.W.
- MINE UNIT 1 (MUSKRAT DEPOSIT)
- MINE UNIT 2 (BOUNTIFUL DEPOSIT)
- MINE UNIT 3 (PEACH DEPOSIT)
- MINE UNIT 4 (BUSS DEPOSIT)
- MINE UNIT 5 (PIX DEPOSIT)

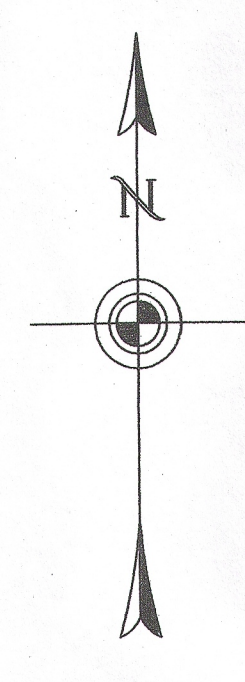
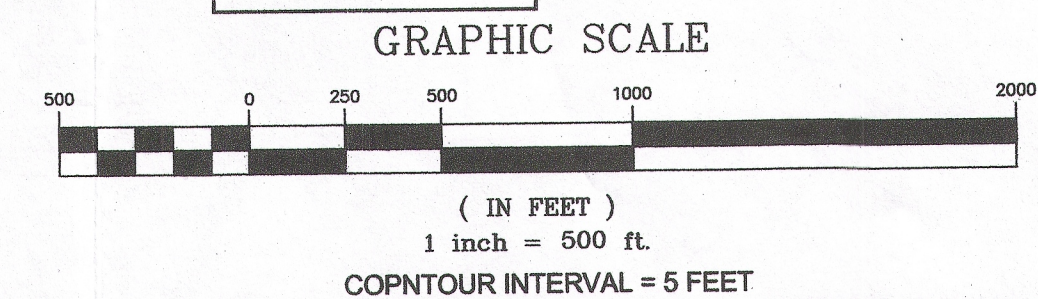
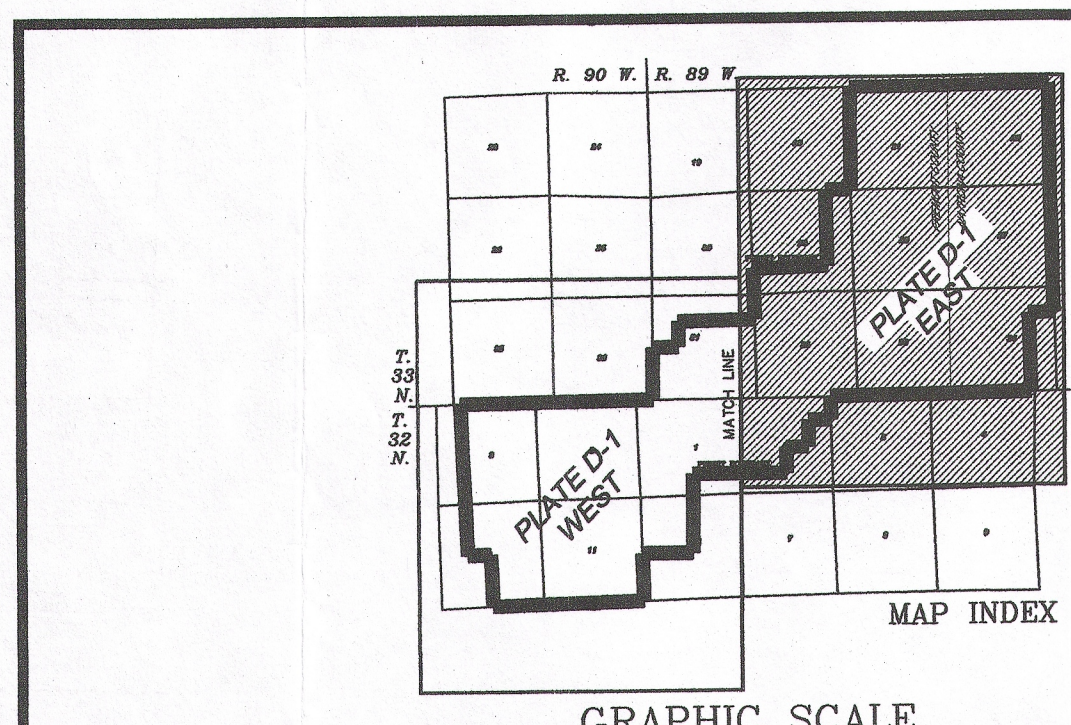


NOTE: TOPOGRAPHIC DATA IN THIS AREA PROVIDED BY AML 300. ACCESS FROM RECLAIMED AREAS WILL BE REQUIRED. DESIGN CHANGES WILL BE REQUIRED.

NOTE: EXISTING UTILITIES TO BE REPAIRED. NO NEW SURFACE UTILITIES WILL BE REQUIRED.

T.33N.
T.32N.

Volume 3



REVISION DATE: 6/20/09
 LAST PLOT DATE: 6/20/09
 CAD FILENAME: PL-D1-1E.dwg

NO.	REVISION	DATE	BY	ISSUED FOR	DATE	BY
POWER RESOURCES, INC						
SCALE: 1" = 500'		DATE	12/96	DWG. NO.	PLATE D1-1E	
DRAWN BY: BRS		CHECKED:		REV. 1		
APPROVED:						

**GAS HILLS PROJECT
 DISTURBED AREAS
 FREMONT AND NATRONA COUNTIES, WY**