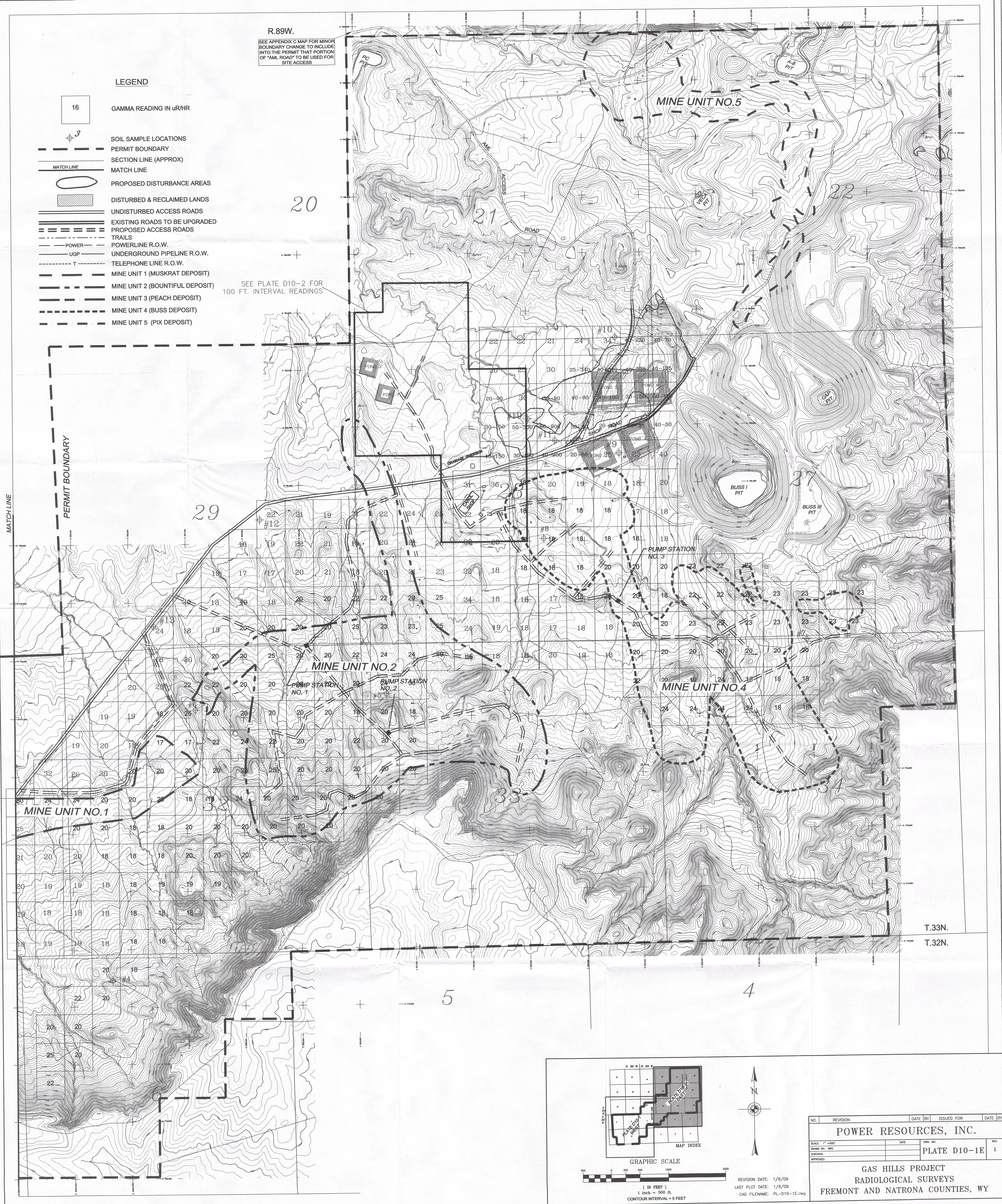


R.89W.
 SEE APPENDIX C MAP FOR MINOR
 BOUNDARY CHANGE TO INCLUDE
 INTO THE PERMIT THAT PORTION
 OF "AML ROAD" TO BE USED FOR
 SITE ACCESS

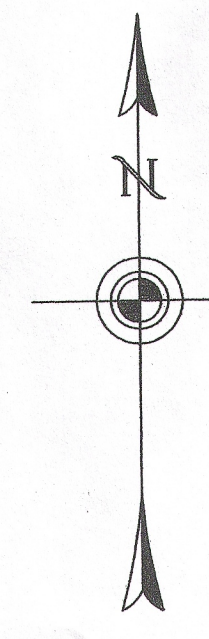
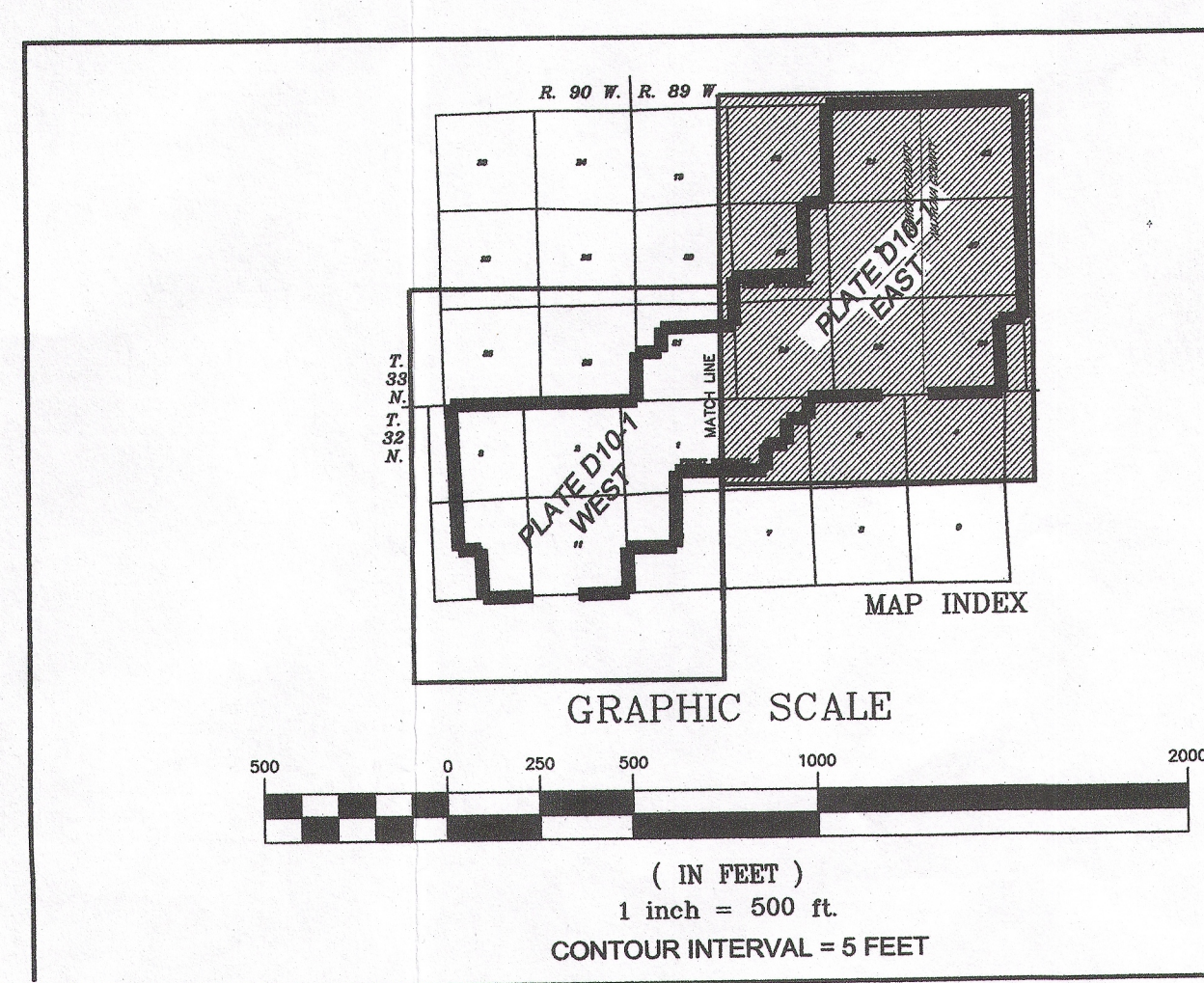
LEGEND

- 16 GAMMA READING IN uR/HR
- SOIL SAMPLE LOCATIONS
- PERMIT BOUNDARY
- SECTION LINE (APPROX)
- MATCH LINE
- PROPOSED DISTURBANCE AREAS
- DISTURBED & RECLAIMED LANDS
- UNDISTURBED ACCESS ROADS
- EXISTING ROADS TO BE UPGRADED
- PROPOSED ACCESS ROADS
- TRAILS
- POWERLINE R.O.W.
- UNDERGROUND PIPELINE R.O.W.
- TELEPHONE LINE R.O.W.
- MINE UNIT 1 (MUSKRAT DEPOSIT)
- MINE UNIT 2 (BOUNTIFUL DEPOSIT)
- MINE UNIT 3 (PEACH DEPOSIT)
- MINE UNIT 4 (BUSS DEPOSIT)
- MINE UNIT 5 (PIX DEPOSIT)

SEE PLATE D10-2 FOR
 100 FT. INTERVAL READINGS



T.33N.
 T.32N.



NO.	REVISION	DATE BY	ISSUED FOR	DATE BY
POWER RESOURCES, INC.				
SCALE: 1" = 500'		DATE	DWG. NO.	REV.
DRAWN BY: WBS			PLATE D10-1E	1
CHECKED:				
APPROVED:				
GAS HILLS PROJECT RADIOLOGICAL SURVEYS FREMONT AND NATRONA COUNTIES, WY				

REVISION DATE: 1/6/09
 LAST PLOT DATE: 1/6/09
 CAD FILENAME: PL-D10-1E.dwg

D-27