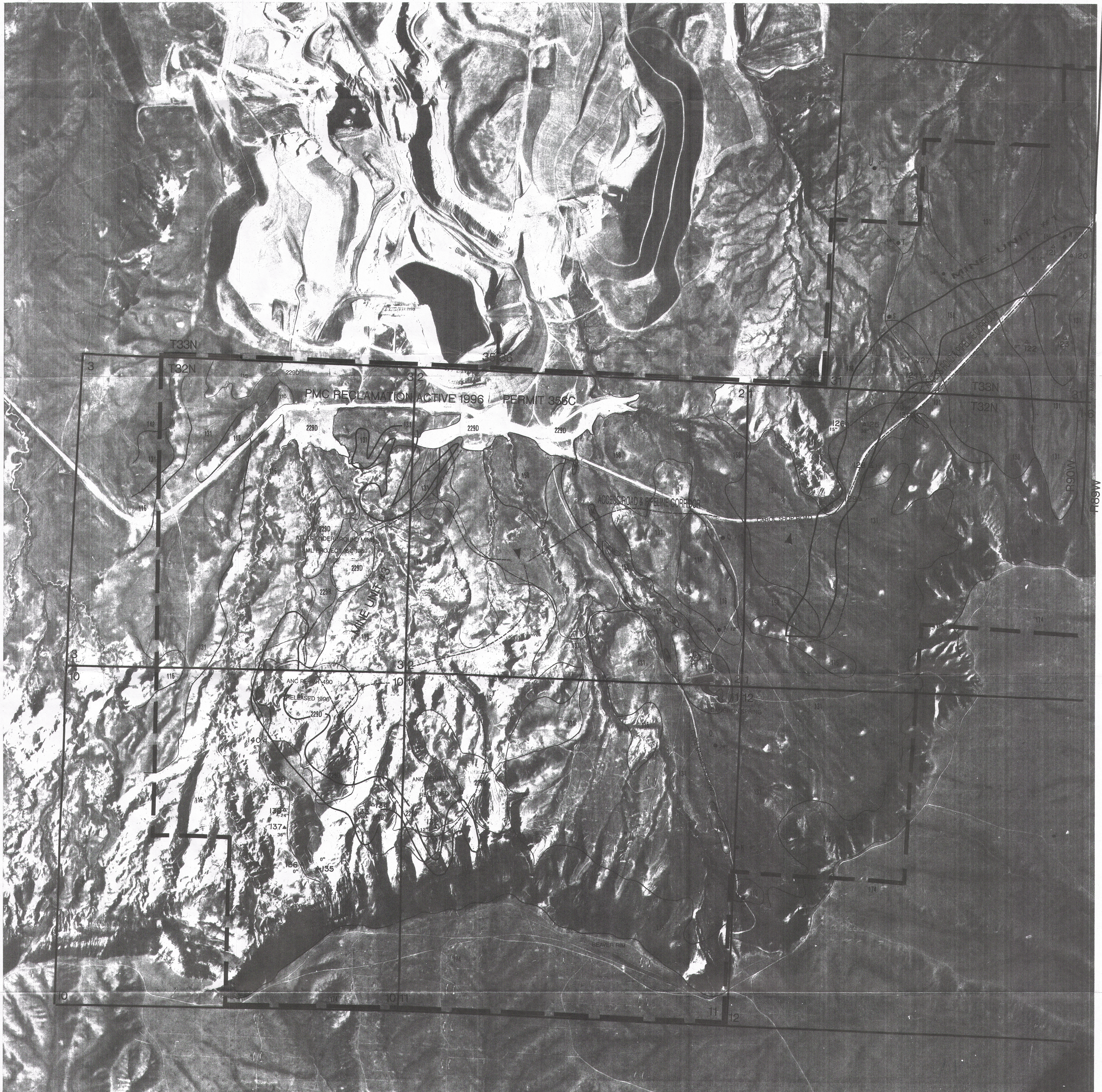


R90W



LEGEND

PERMIT BOUNDARY

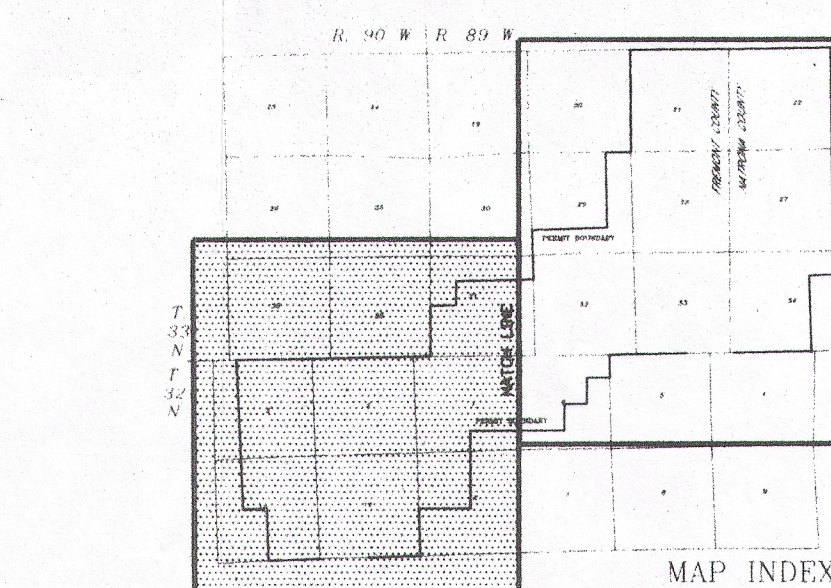
SECTION LINE (APPROX)

MATCH LINE

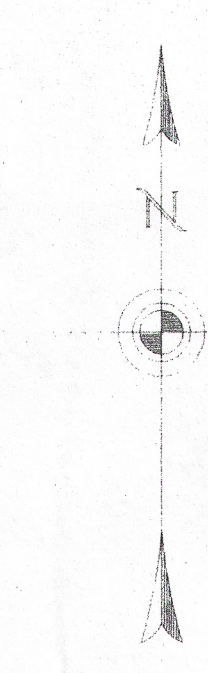
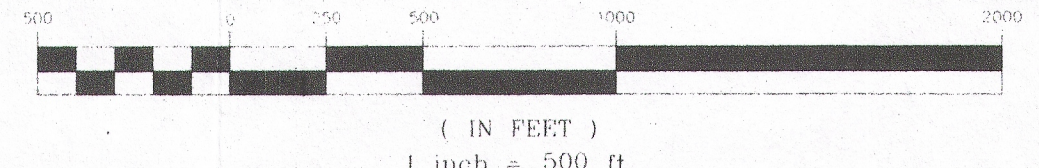
MAPPING UNIT	SOILS	MEAN SUITABLE DEPTH (ft.)
116	Blackhall-Rock Outcrop Complex, Steep	0.3
131	Coalmont-Milren-Cragosen Complex, Rolling	1.3
136	Cragosen-Carmody-Blazon Complex, Hilly	0.7
137	Brownsto-Lupinto Complex, 6-40%*	0.8
142	Diamondville-Forelle Association, Rolling	2.0
148	Forelle-Poposhia Association, 2-12%	2.4*
157	Havre-Absher-Forelle Loams, 0-6%	2.9*
158	Havre-Forelle-Glendive Complex, 0-3%	2.4
174	Milren-Bosler-Rock River Sandy Loams, 1-12%	2.3*
186	Poposhia-Blazon-Carmody Complex, Hilly	1.3*
208	Sinkson-Almy-Thermopolis Association, Rolling	1.2*
229	Disturbed Area	0
229(R)	Reclaimed Area	0.7
M	Unnamed Torrifluent	2.0
R	Reservoir	0

*Within mapping area but not within affected area.

- SATELLITE LOCATION
- 1996 ANALYSIS
- SOIL SAMPLE LOCATION
- 1997 ANALYSIS
- 1997 VERIFICATION



GRAPHIC SCALE



REVISION DATE: None
 LAST PLOT DATE: None
 CAD FILENAME: None

POWER RESOURCES, INC.

PLATE D7-1W

GAS HILLS PROJECT
 SOILS MAP
 FREMONT AND NATRONA COUNTIES, WY