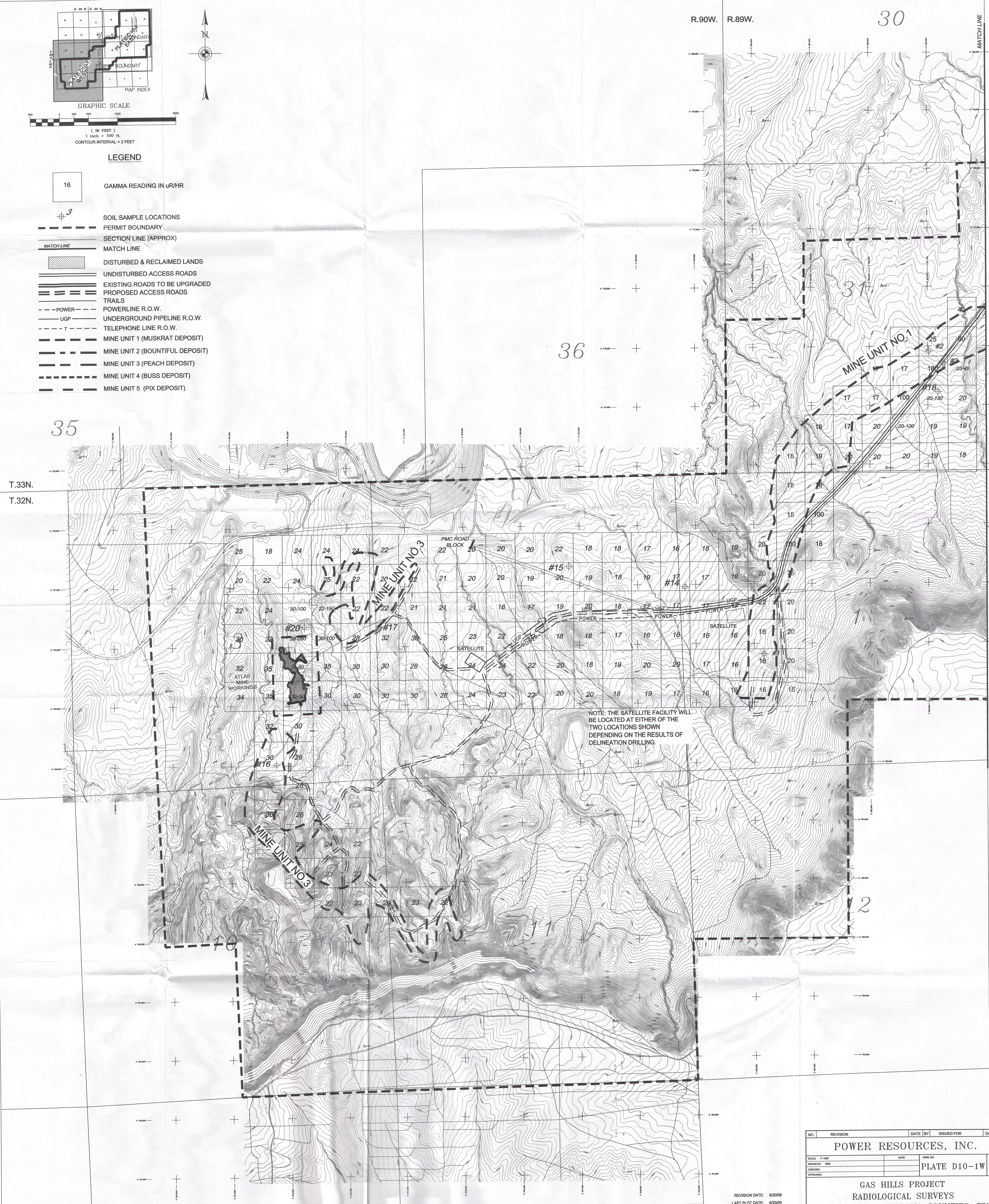


LEGEND

- 16 GAMMA READING IN $\mu\text{R}/\text{HR}$
- SOIL SAMPLE LOCATIONS
- PERMIT BOUNDARY
- SECTION LINE (APPROX)
- MATCH LINE
- DISTURBED & RECLAIMED LANDS
- UNDISTURBED ACCESS ROADS
- EXISTING ROADS TO BE UPGRADED
- PROPOSED ACCESS ROADS
- TRAILS
- POWERLINE R.O.W.
- UGP UNDERGROUND PIPELINE R.O.W.
- TELEPHONE LINE R.O.W.
- MINE UNIT 1 (MUSKRAT DEPOSIT)
- MINE UNIT 2 (BOUNTIFUL DEPOSIT)
- MINE UNIT 3 (PEACH DEPOSIT)
- MINE UNIT 4 (BUSS DEPOSIT)
- MINE UNIT 5 (PIX DEPOSIT)



NO.	REVISION	DATE	BY	ISSUED FOR	DATE	BY
POWER RESOURCES, INC.						
SCALE: 1"=500'		DATE		DWG. NO.		REV.
DRAWN BY: BRS				PLATE D10-1W		1
CHECKED:						
APPROVED:						
GAS HILLS PROJECT RADIOLOGICAL SURVEYS FREMONT AND NATRONA COUNTIES, WY						

REVISION DATE: 6/20/09
 LAST PLOT DATE: 6/20/09
 CAD FILENAME: PL-D10-1W.dwg