

0.5 0.25 0 0.5 Miles

Figure 1.  
Location of Proposed BBNPP



**NORMANDEAU ASSOCIATES**  
ENVIRONMENTAL CONSULTANTS  
400 Old Reading Pike, Bldg A, Suite 101 Stowe, PA 19464

date: 07/20/10  
prepared by: s.sherman  
project: 22474.000

rev. date: 11/11/10, 09/01/11  
prepared for: b.lees  
file name: Figure1.BBNPP\_Site\_USGS



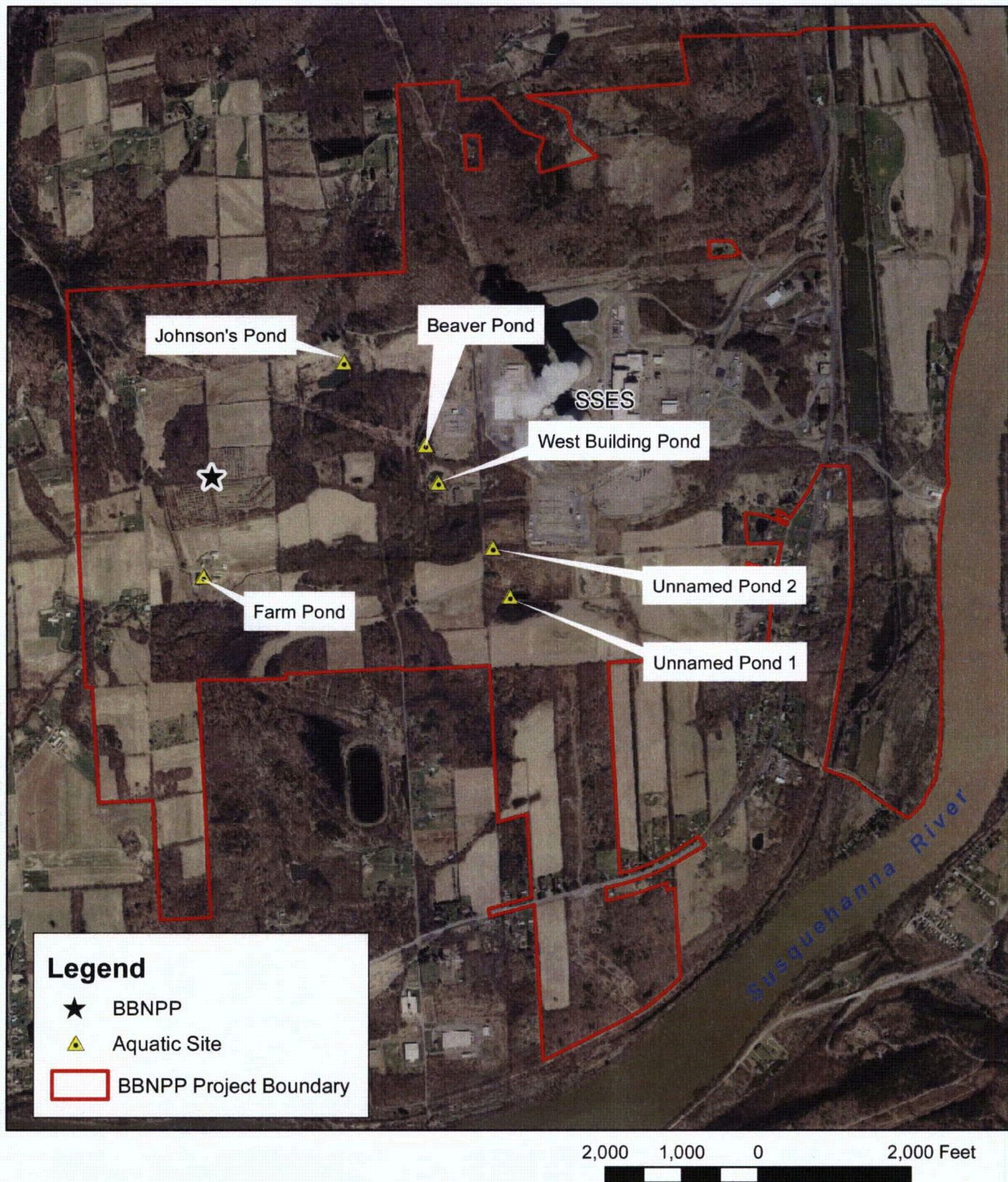


Figure 2.  
Location of the pond biota  
collection stations.



**NORMANDEAU ASSOCIATES**  
ENVIRONMENTAL CONSULTANTS  
400 Old Reading Pike, Bldg A, Suite 101 Stowe, PA 19464

date: 07/20/10  
prepared by: s.sherman  
project: 22474.000

rev. date: 11/17/10, 09/01/11  
prepared for: b.lees  
file name: Figure2.BBNPP Ponds