  
U.S. NRC  
United States Nuclear Regulatory Commission  
Protecting People and the Environment

**Emergency Preparedness (EP) Drill and Exercise  
Performance (DEP) Performance Indicator (PI)  
Success Criteria**

---

---

---

---

---

---

---

---

**Topics**

- DEP PI bases review
- EP DEP PI issue background
- DEP success criteria concerns

2 *Protecting People and the Environment*

---

---

---

---

---

---

---

---

**DEP PI Bases**

**SECY-98-045**  
NRC actions resulting from the new assessment process are intended to *supplement NRC actions already taken by the separate processes*, based on the integration and broad assessment of licensee performance issues.

**NEI 99-02 Rev 6**  
The *thresholds for each performance indicator provide objective indication of the need to modify NRC inspection resources* or to take other regulatory actions based on licensee performance.

3 *Protecting People and the Environment*

---

---

---

---

---

---

---

---

*DEP PI Bases*

**Performance Indicators  
Do Not Equal  
Regulatory Compliance**

4 *Protecting People and the Environment*

---

---

---

---

---

---

---

---

*EP DEP PI issue background*

- Reg IV EP rule forum public meeting
- EP Manager suggests DEP PI success criteria should equal regulatory compliance
- NSIR discuss with industry and NEI DEP PI notification success Vs regulatory compliance for capability to notify OROs within 15 minutes of a declaration.
- A revision to the DEP PI success criteria endorsed by senior NSIR management.

5 *Protecting People and the Environment*

---

---

---

---

---

---

---

---

*DEP success criteria concerns*

- DEP opportunity evaluation ends when the initial ORO contact is made
- No complete evaluation of the licensee's capability to make the notification as required by regulation.
- Challenges confidence in efficacy of licensees ability to meet 10 CFR 50.47(b)14

6 *Protecting People and the Environment*

---

---

---

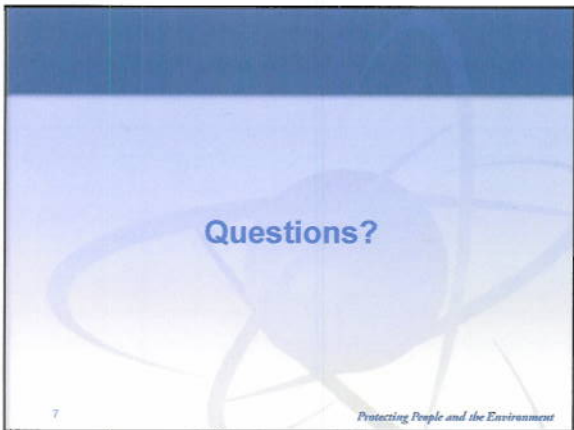
---

---

---

---

---



---

---

---

---

---

---

---