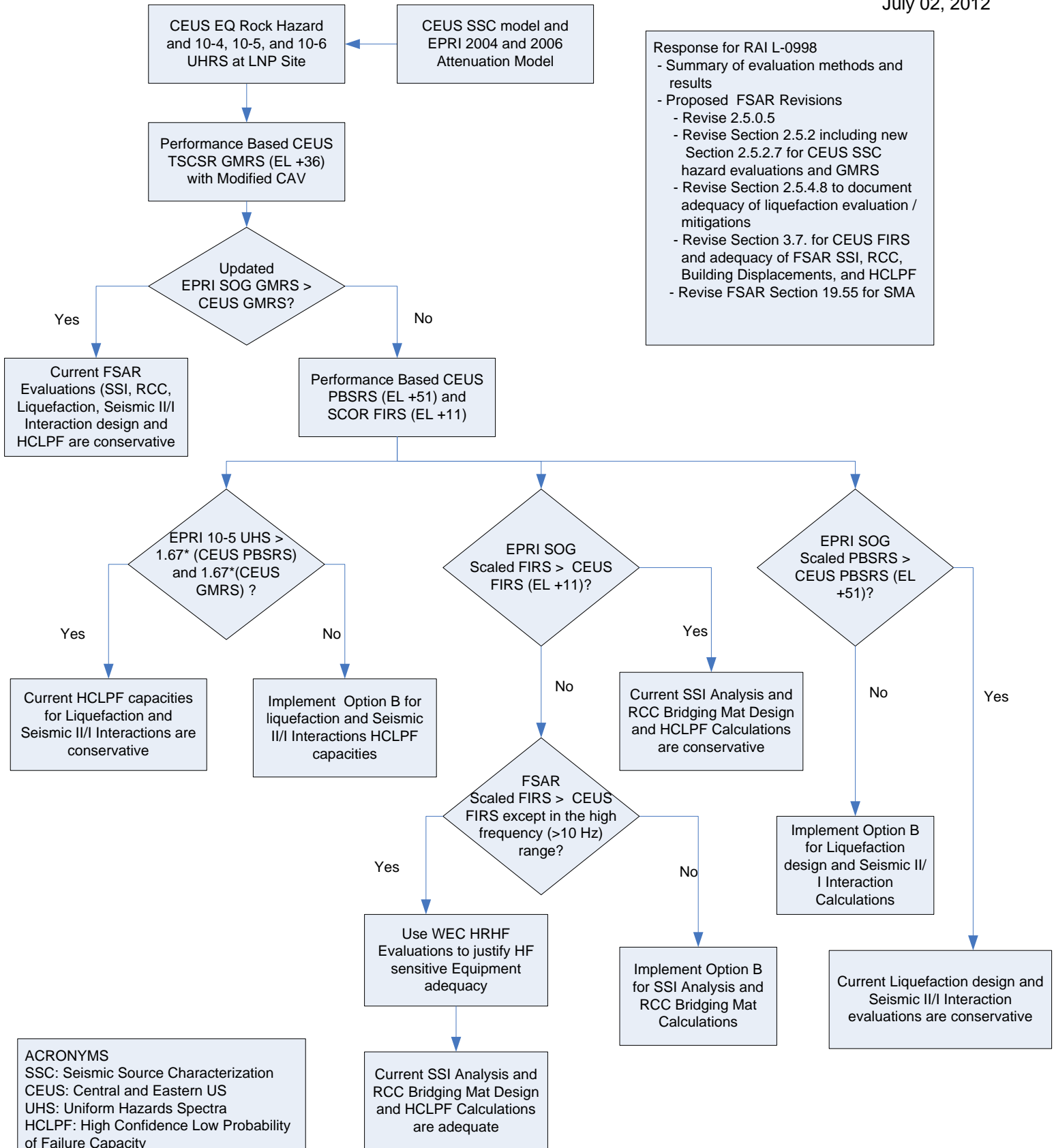


OPTION A: EVALUATION OF CEUS SSC SEISMIC HAZARDS AT LNP SITE

July 02, 2012



Response for RAI L-0998

- Summary of evaluation methods and results
- Proposed FSAR Revisions
 - Revise 2.5.0.5
 - Revise Section 2.5.2 including new Section 2.5.2.7 for CEUS SSC hazard evaluations and GMRS
 - Revise Section 2.5.4.8 to document adequacy of liquefaction evaluation / mitigations
 - Revise Section 3.7. for CEUS FIRS and adequacy of FSAR SSI, RCC, Building Displacements, and HCLPF
 - Revise FSAR Section 19.55 for SMA

ACRONYMS

- SSC: Seismic Source Characterization
- CEUS: Central and Eastern US
- UHS: Uniform Hazards Spectra
- HCLPF: High Confidence Low Probability of Failure Capacity
- SCOR: Soil Column Outcrop Response
- GMRS: Ground Motion Response Spectra
- FIRS: Foundation Interface RS
- SSI: Soil Structure Interaction Analysis
- RCC: Roller Compacted Concrete Mat