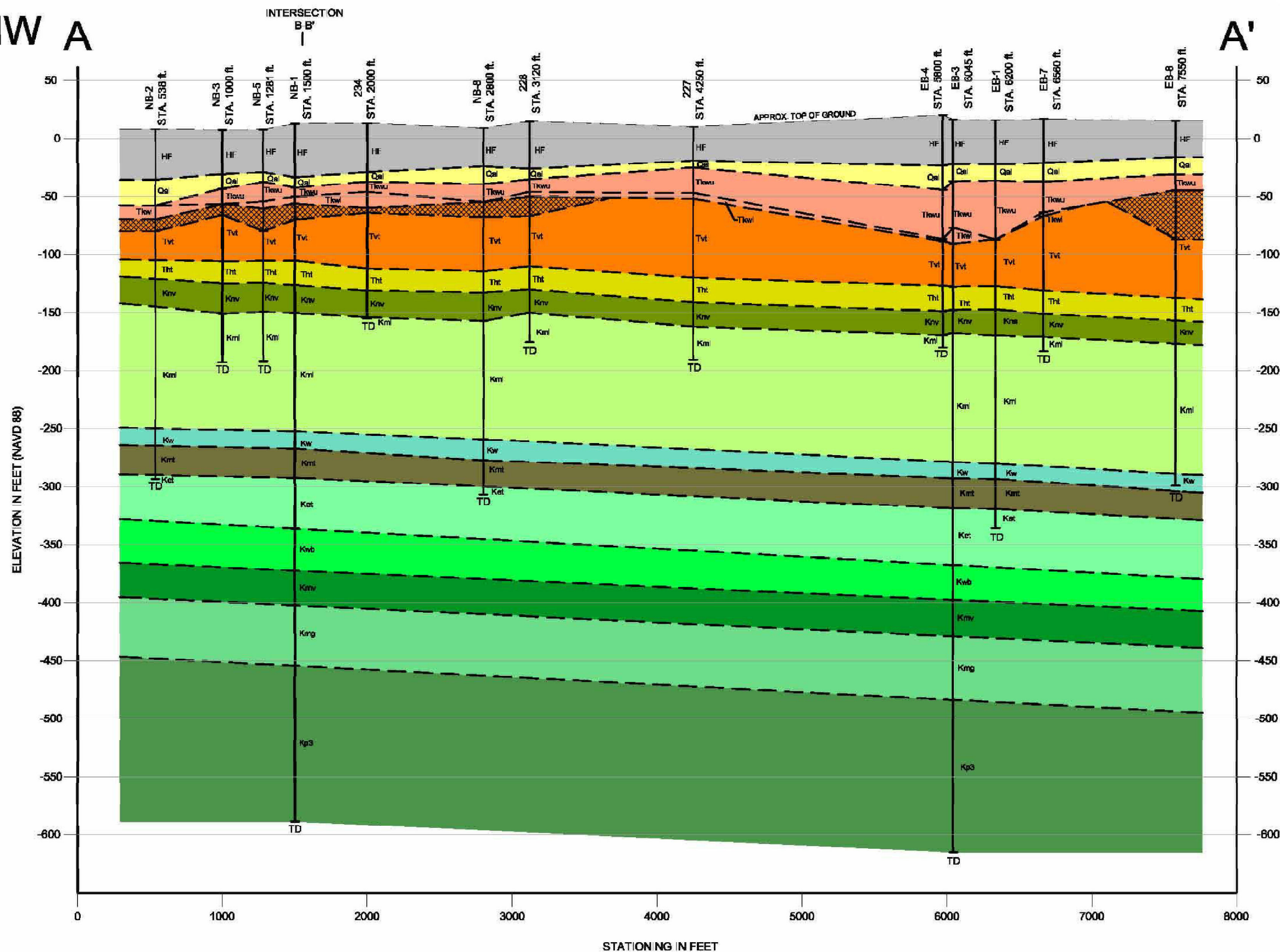


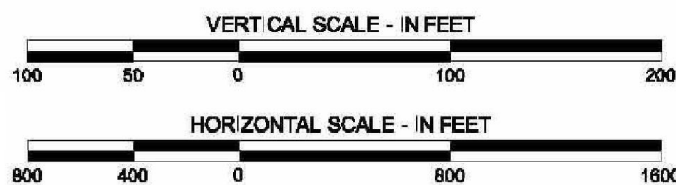
NW A

A' SE



LEGEND:

- HF - Artificial and Hydraulic Fill
- Qa - Alluvium
- Tk_u - Kirkwood Formation (Upper)
- Tk_l - Kirkwood Formation (Lower)
- Tvt_o - Vincentown Formation (Oxidized)
- Tvt - Vincentown Formation
- Th_t - Homerstown Formation
- Krv - Navesink Formation
- Km_l - Mount Laurel Formation
- Kw - Wenonah Formation
- Kmt - Marshalltown Formation
- Ket - Englishtown Formation
- Kwb - Woodbury Formation
- Kmv - Merchantville Formation
- Kmg - Magothy Formation
- Kp₃ - Potomac Formation



NOTES:

- BORINGS 227, 228, AND 234 (Reference 2.6.2)
- EB AND NB SERIES BORINGS COMPLETED FOR ESPA (Reference 2.6.8)
- TD = TERMINATION DEPTH
- SEE FIGURE 2.6-8 FOR SECTION LOCATION.
- BORINGS PROJECTED ORTHOGONALLY TO SECTION LINE.
- SOME BORINGS SHOWN ON FIG. 2.6-8 NOT INCLUDED DUE TO SHALLOW DEPTH OR PROXIMITY TO OTHER BORINGS.

PSEG Power, LLC
 PSEG Site ESPA
 Part 2, Site Safety Analysis Report
 Cross Section A-A'
 Orientation
 FIGURE 2.4.12-5
 Rev 0