



Figure 12 – View looking west along Franklin School Road at Site 4-1 (Photo 1 on Figure 16).



Figure 13 – View looking north into the interior of Site 4-1 on unnamed road off of Baptistown Road (Photo 2 on Figure 16).



Figure 14 – Interior of Site 4-1 as seen from Pittstown Road - view looking west (Photo 3 on Figure 16)



Figure 15 – Interior of Site 4-1 looking westward from eastern site boundary on Wolverton Road (Photo 4 on Figure 16).



### Site 4-1 Photo Location Map

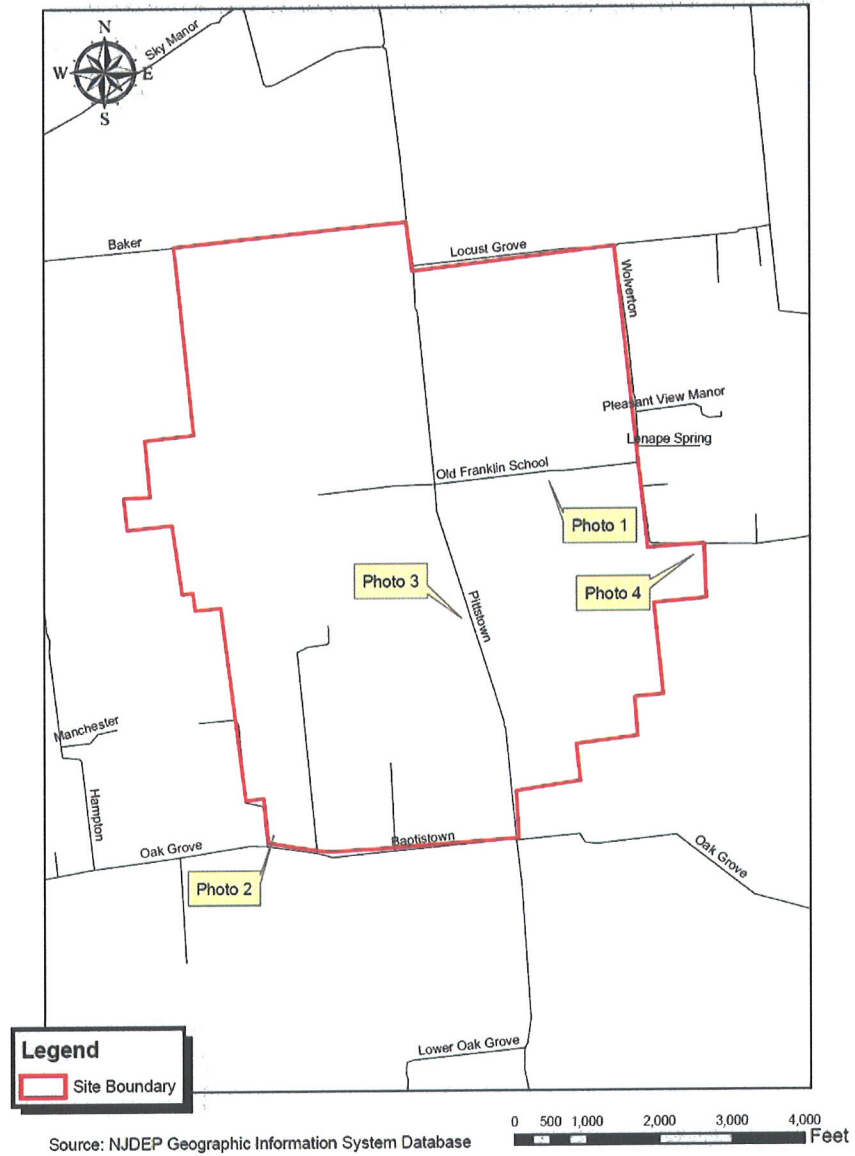


Figure 16 – Photo locations for Site 4-1.

## Site 4-1 Land Use Map

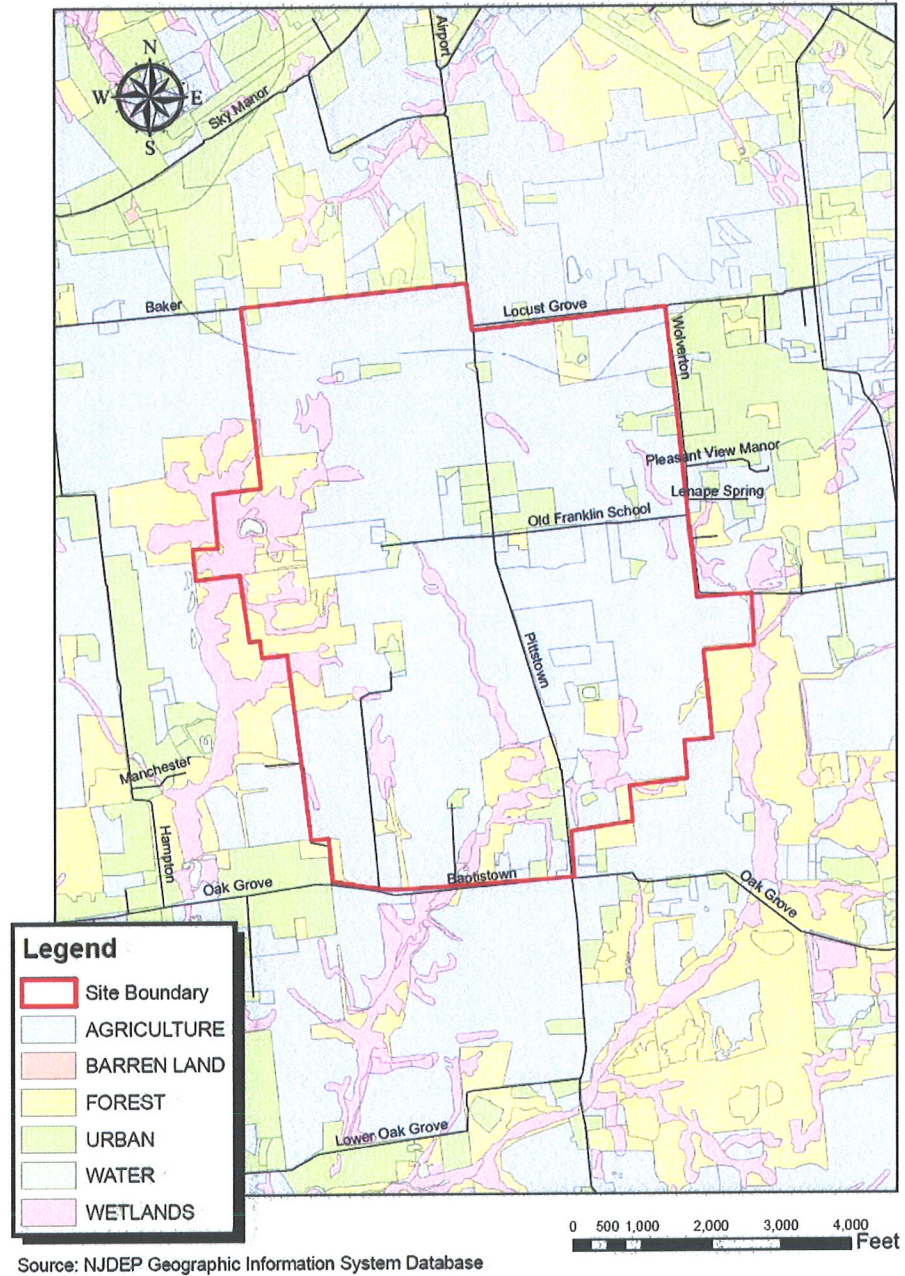


Figure 17 – NJDEP Land Use Classification Map for Site 4-1.



## Site 4-1 Landscape Project Data Map No.1

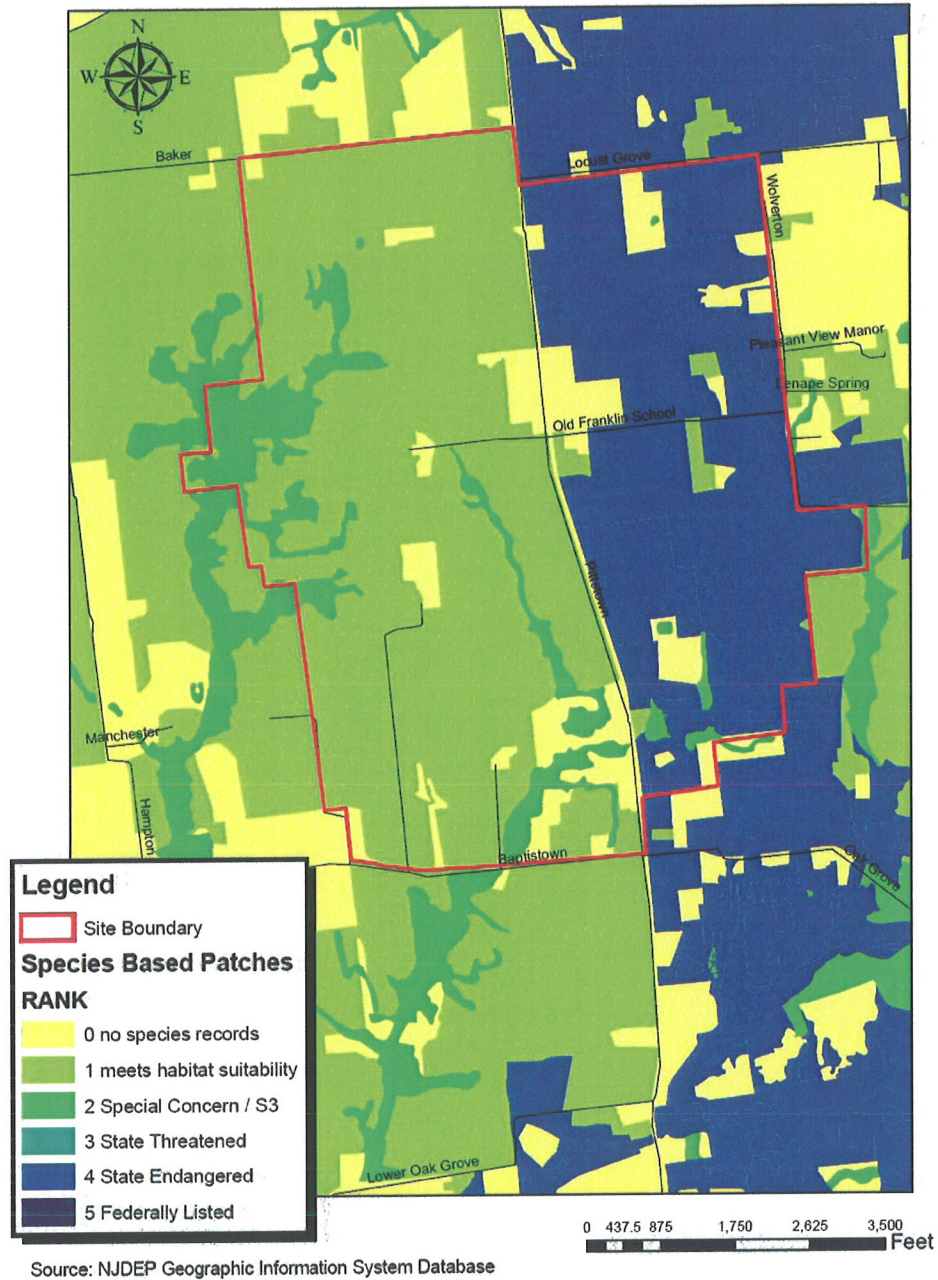


Figure 18 – NJDEP Landscape Project (Species Based Patches) data for Site 4-1.

## Site 4-1 Landscape Project Data Map No.2

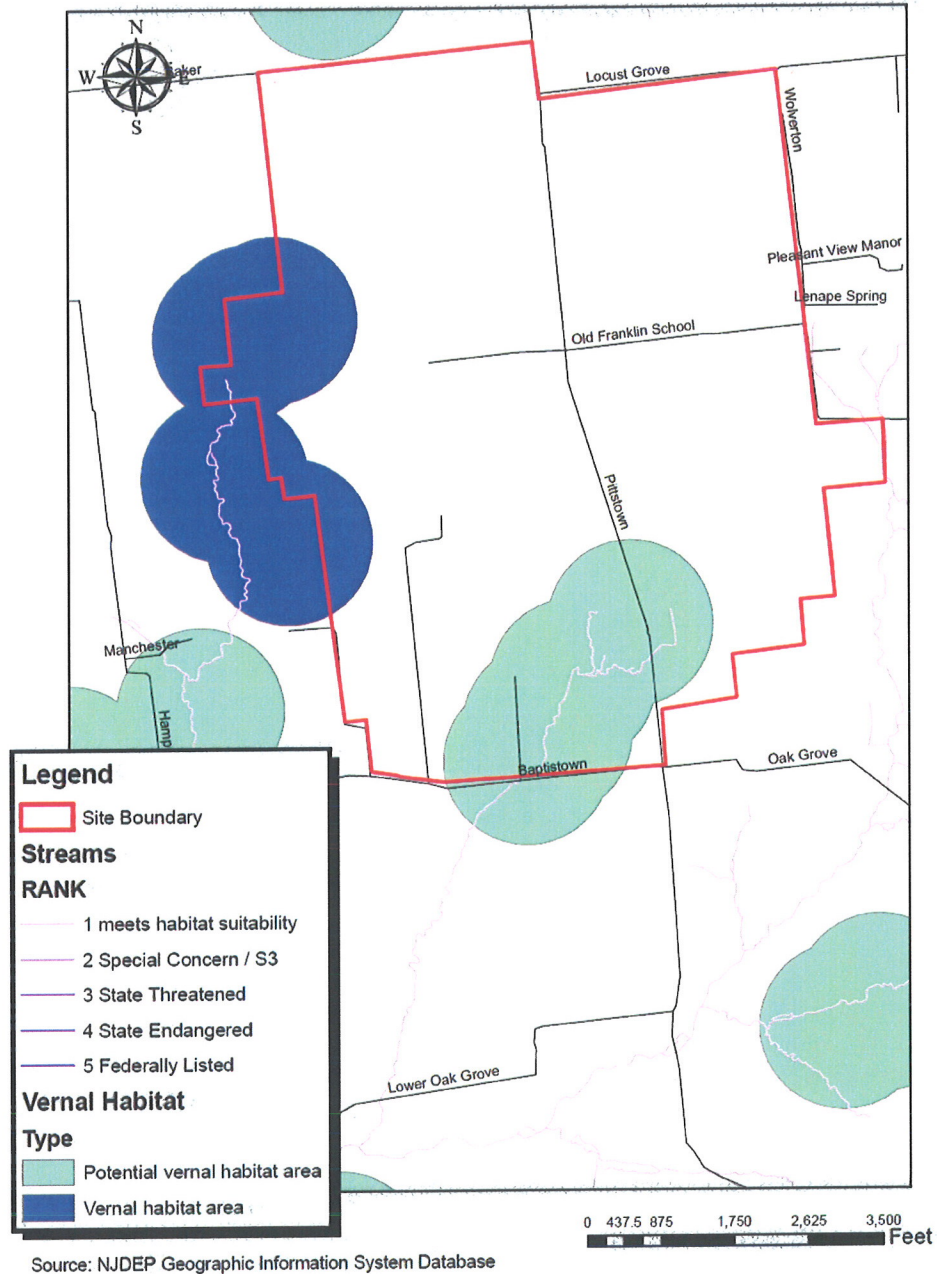


Figure 19 – NJDEP Landscape Project (Emergent Wetlands) data for Site 4-1.



## Site 4-1 Natural Resources Map

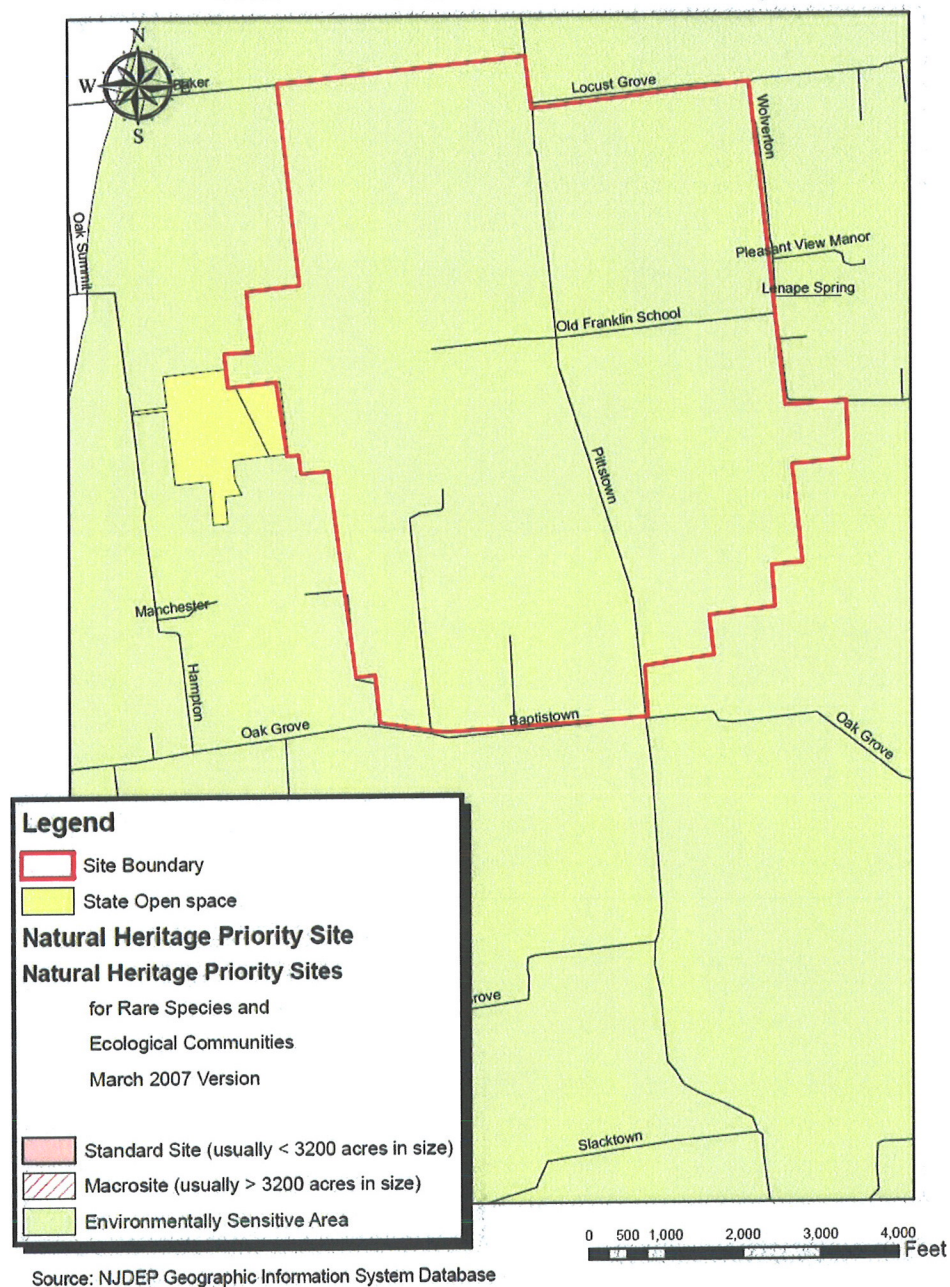


Figure 20 – NJDEP Natural Resources Areas map for Site 4-1.

## Site 4-1 NJDEP Wetland Map

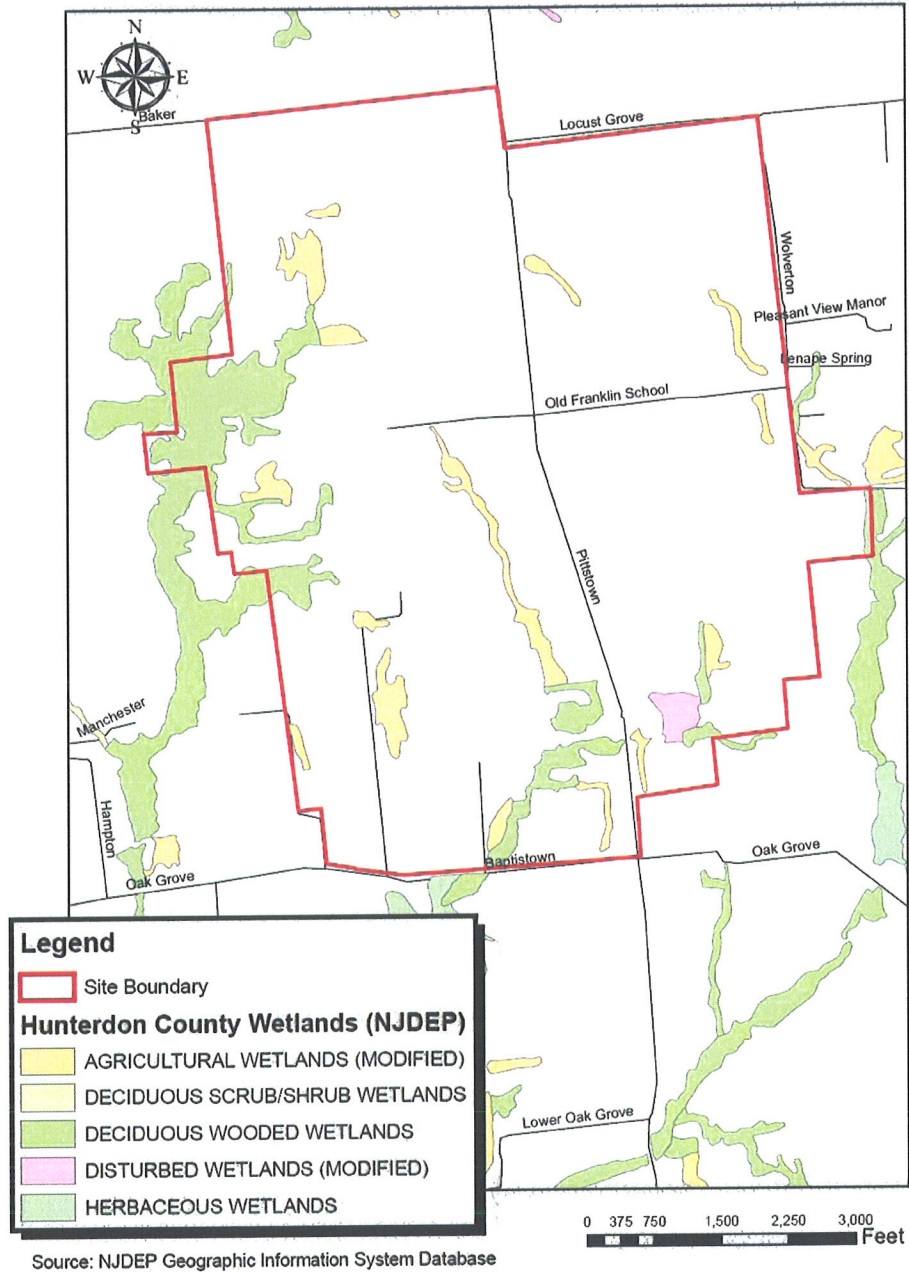


Figure 21 – NJDEP Wetland Classification map for Site 4-1.



## Site 4-1 NWI Wetland Map

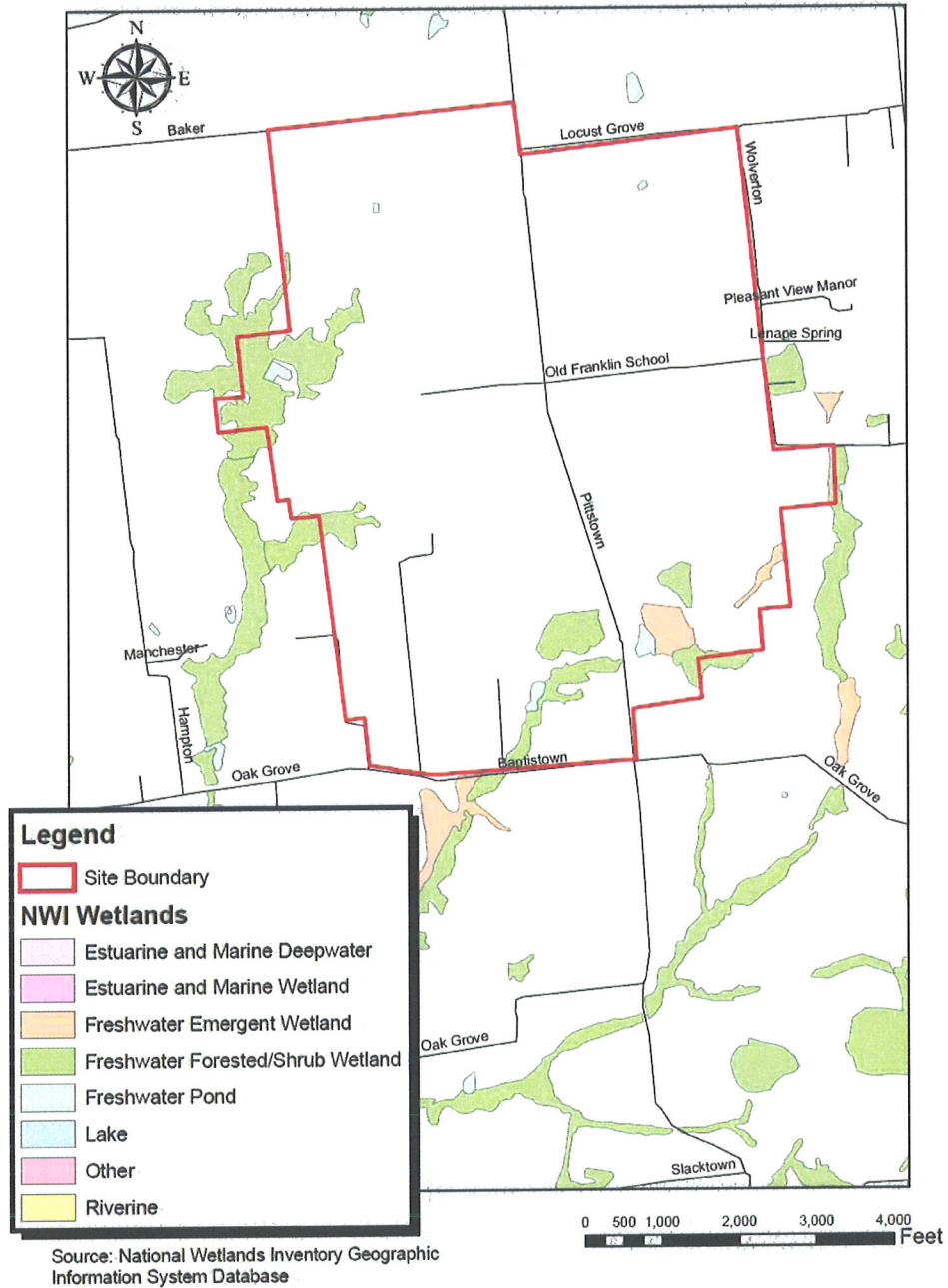


Figure 22 – National Wetlands Inventory (NWI) map for site 4-1.



Figure 23 – View looking northwest along County Road 631 within Site 7-1 (Photo 1 in Figure 27).



Figure 24 – View west from Haines Neck Road, within Site 7-1 (Photo 2 in Figure 27).





Figure 25 – View north along Haines Neck Road within Site 7-1 (Photo 3 in Figure 27).



Figure 26 – View northeast from Pointers Auburn Road showing existing transmission corridor within Site 7-1 (Photo 4 in Figure 27).

## Site 7-1 Photo Location Map

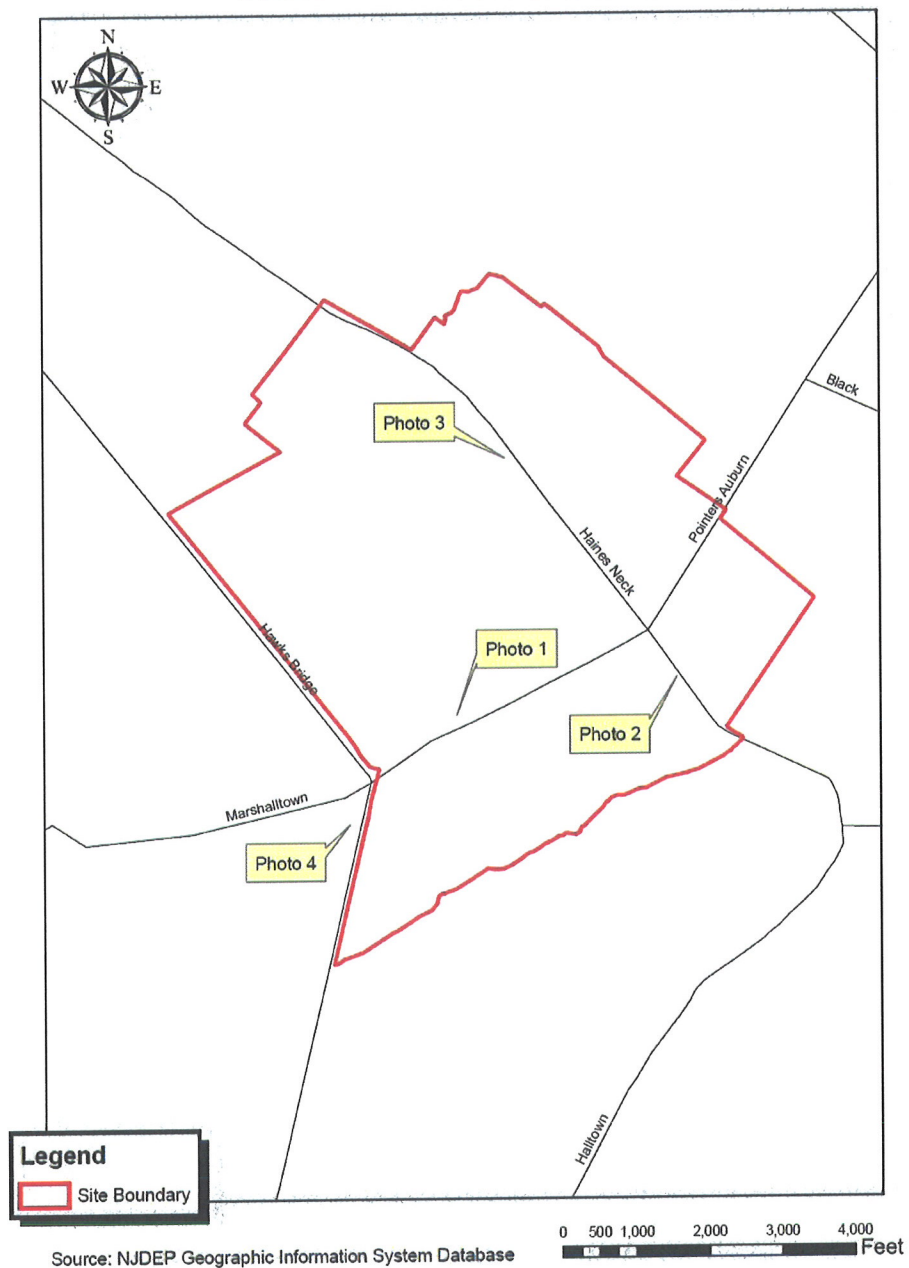


Figure 27 – Photo location map for Site 7-1.



Site 7-1 Land Use Map

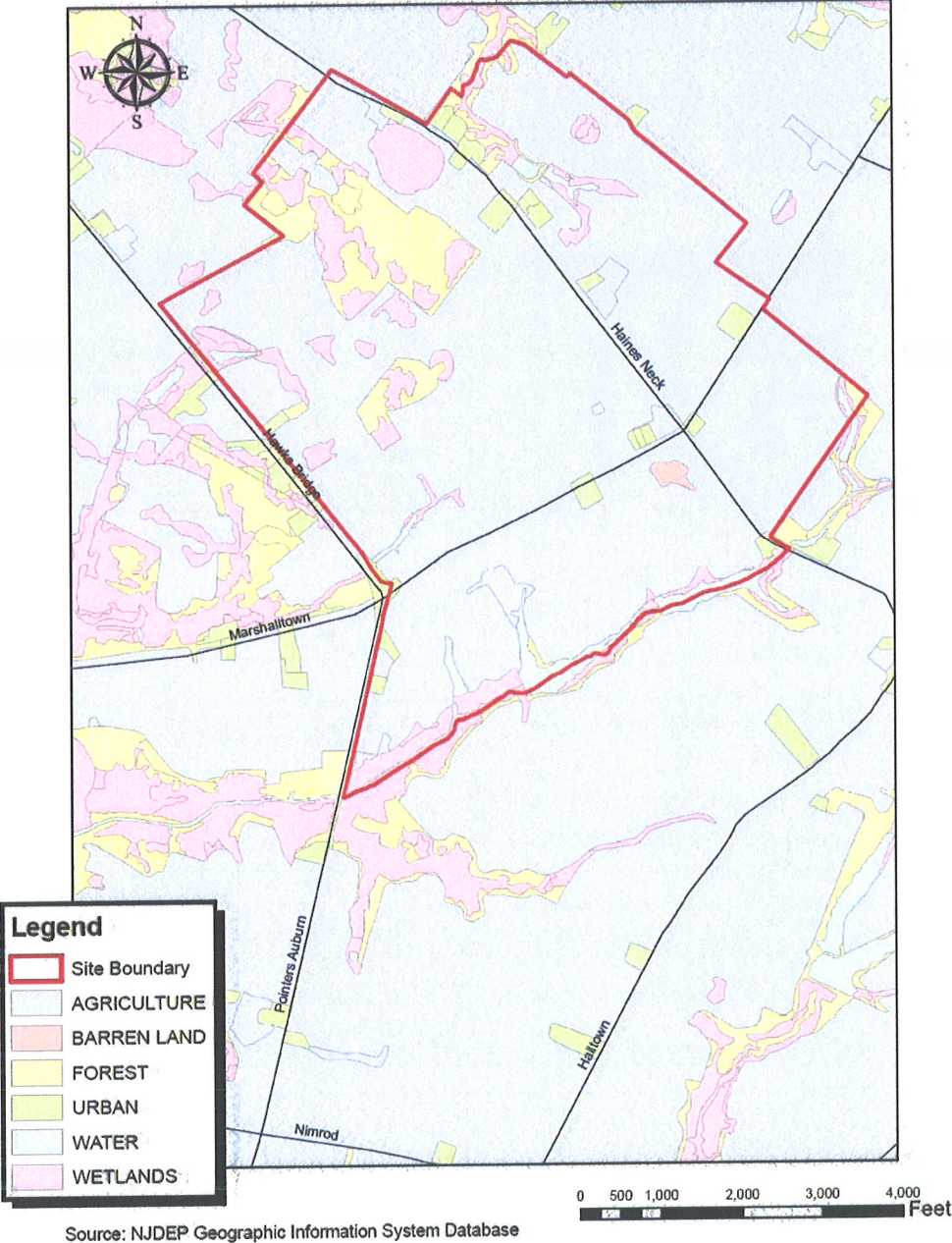
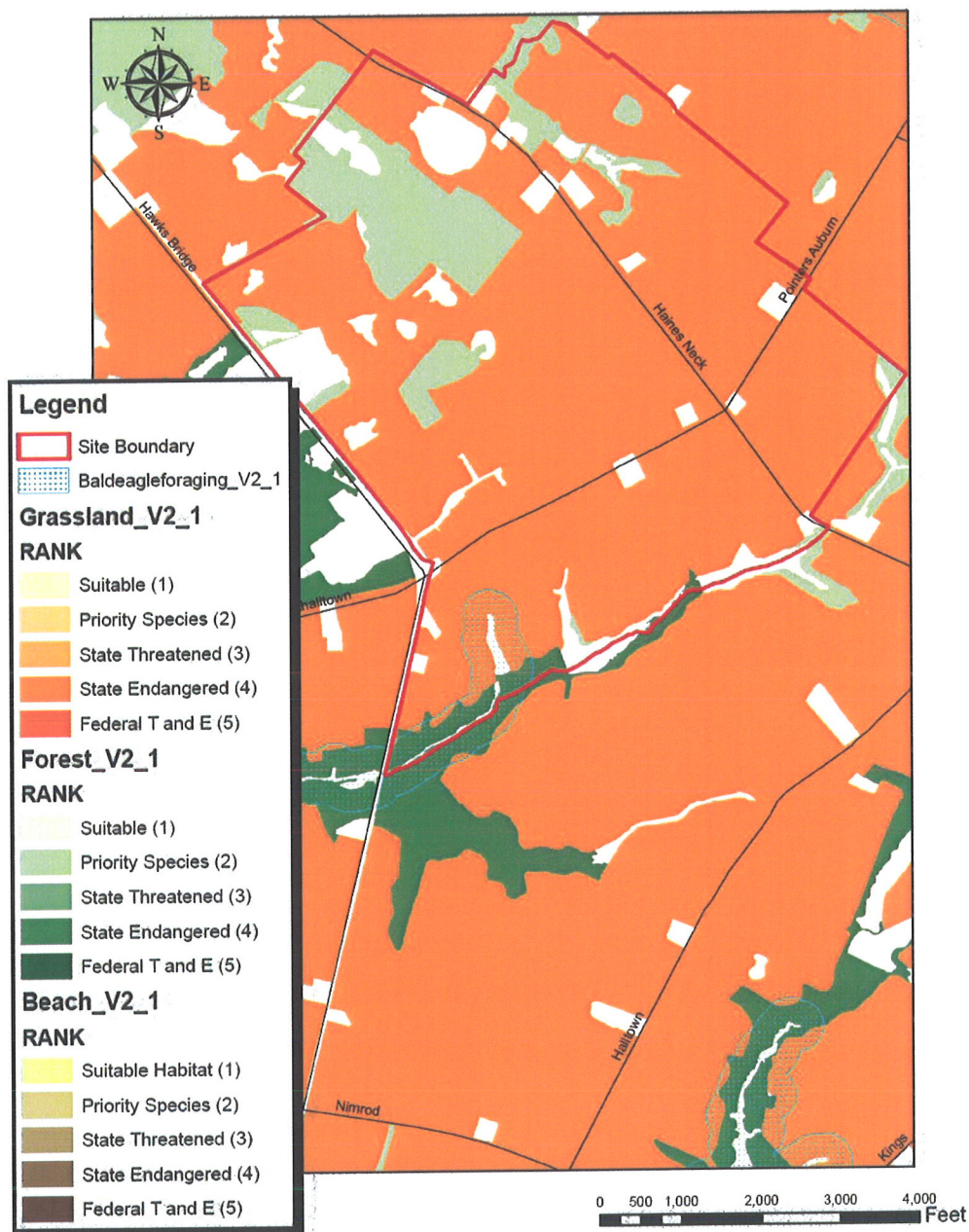


Figure 28 – NJDEP Land Use Classification Map for Site 7-1.

## Site 7-1 Landscape Project Data Map No.1

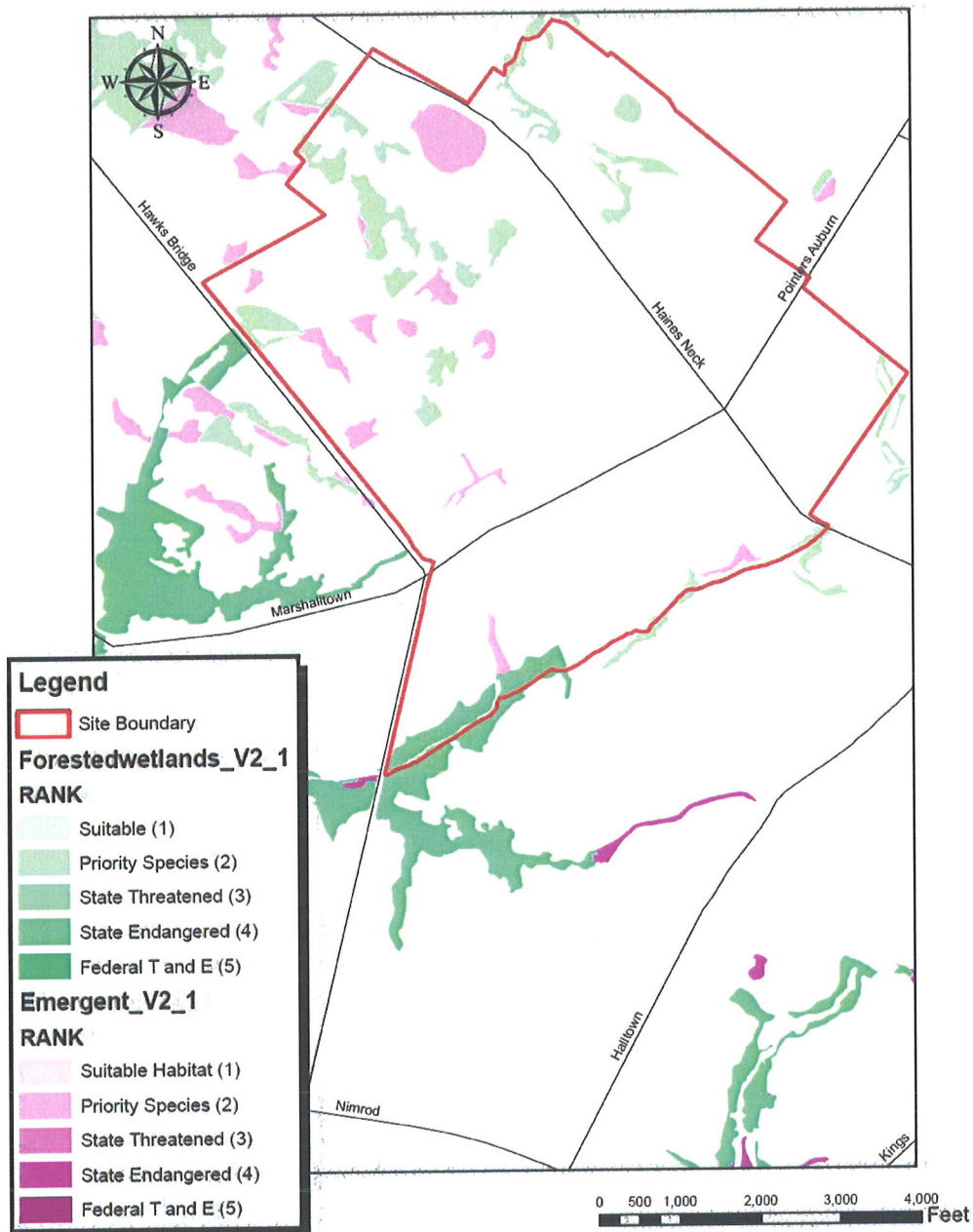


Source: NJDEP Geographic Information System Database

Figure 29 – NJDEP Landscape Project Map (Grassland, Forest, and Beach) for Site 7-1.



## Site 7-1 Landscape Project Data Map No.2



Source: NJDEP Geographic Information System Database

Figure 30 – NJDEP Landscape Project Map (Forested and Emergent wetlands) for Site 7-1.

## Site 7-1 Natural Resources Map

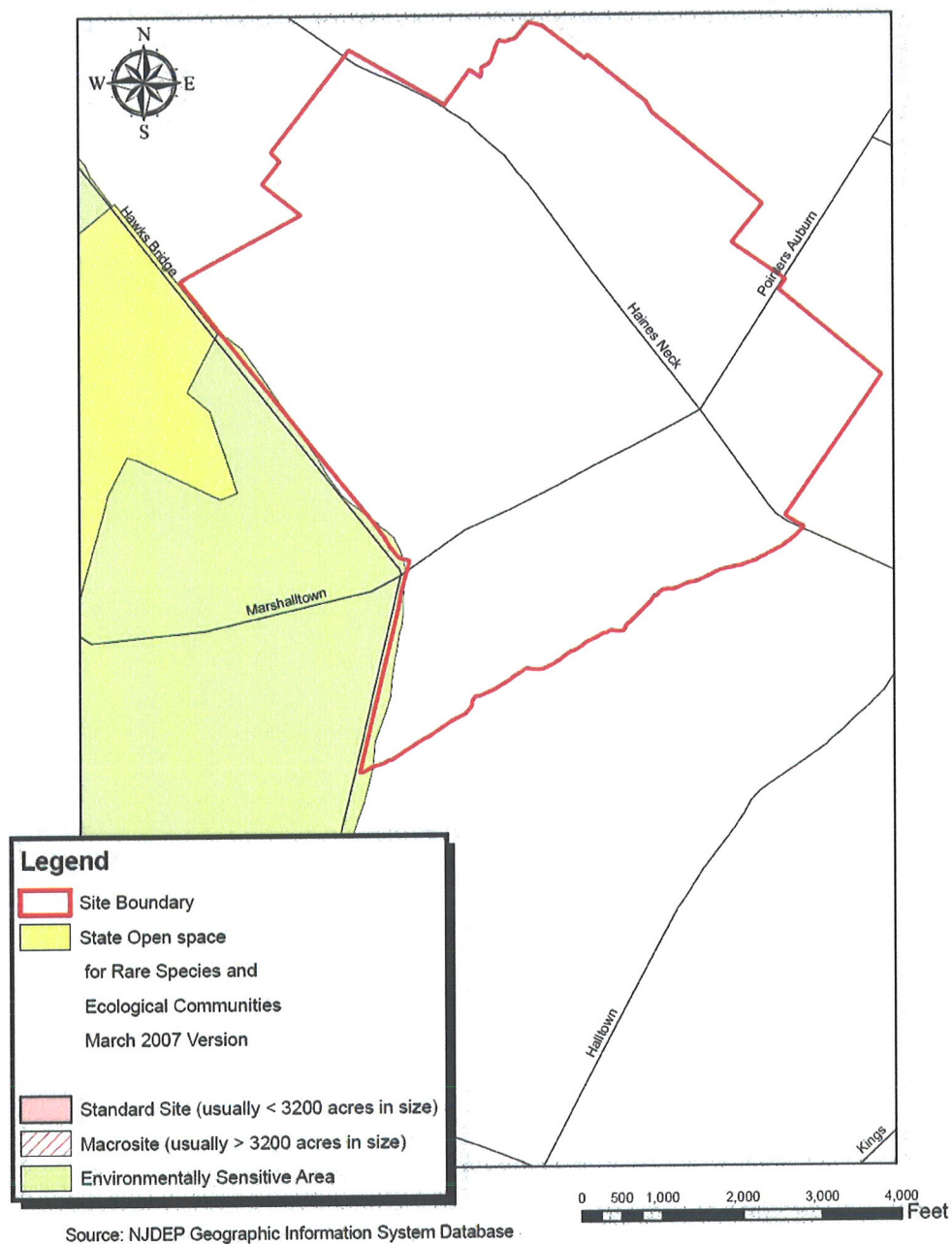


Figure 31 – NJDEP Natural Resources Areas data for Site 7-1.



# Site 7-1 NJDEP Wetland Map

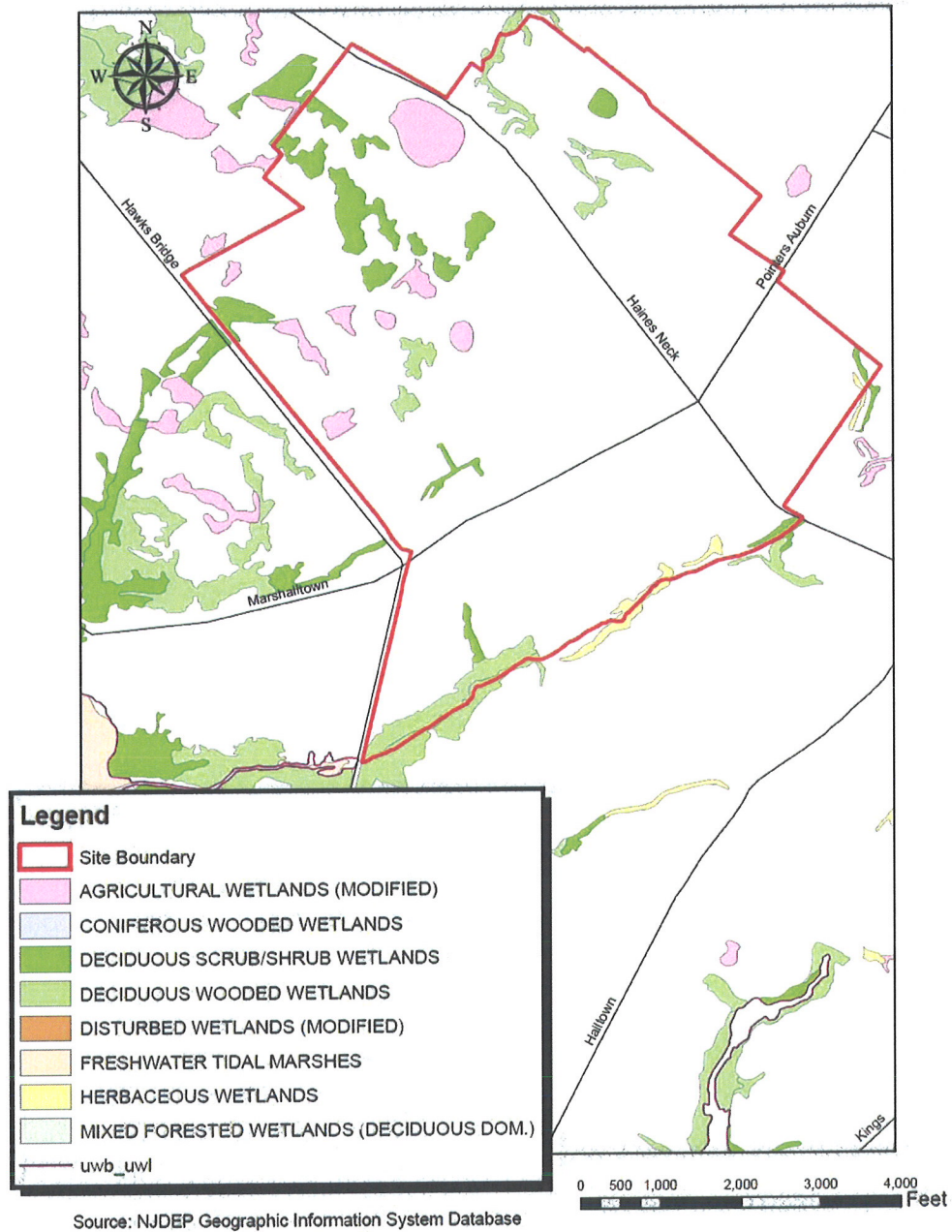


Figure 32 – NJDEP Wetlands Classification data for Site 7-1.

# Site 7-1 NWI Wetland Map

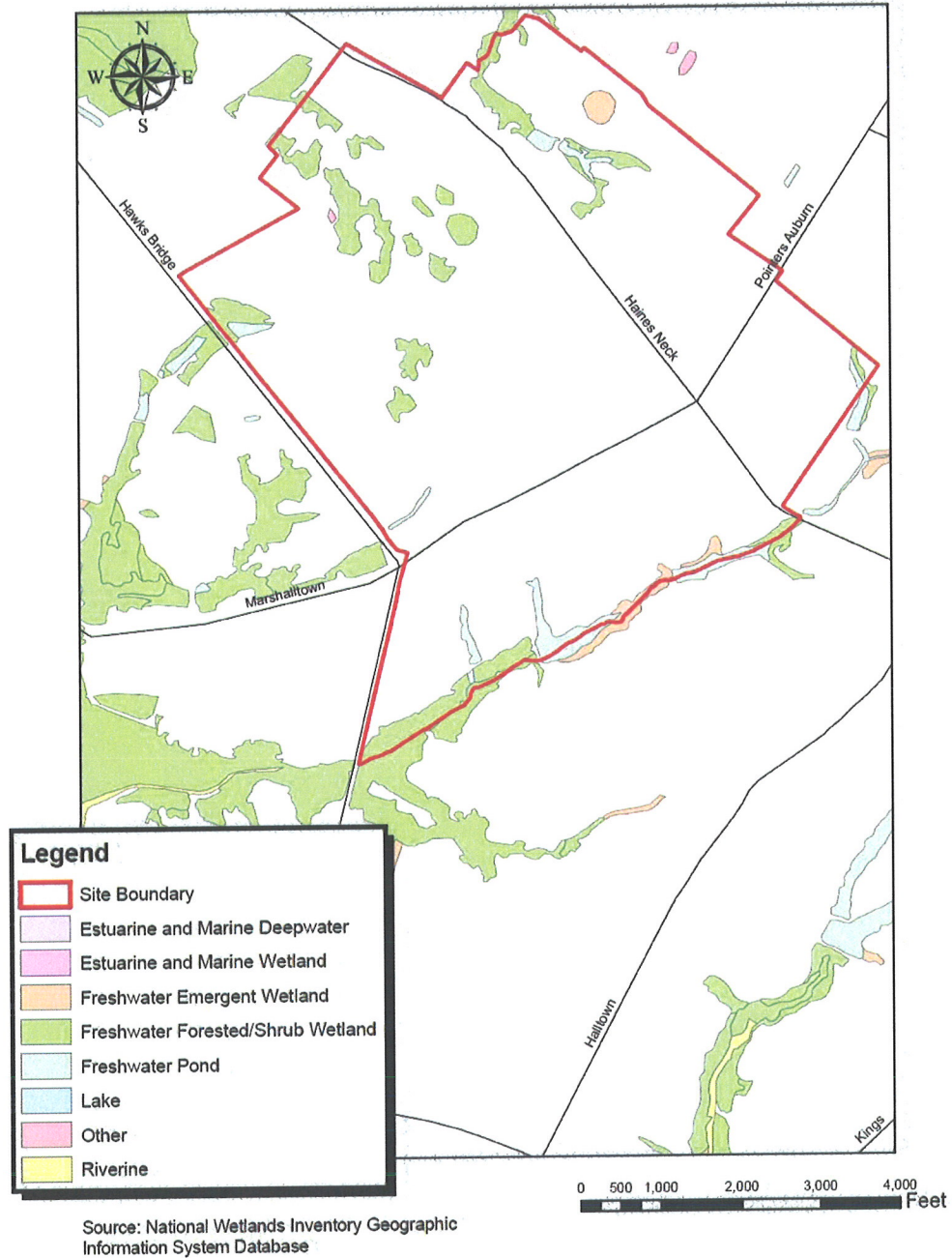


Figure 33 – National Wetlands Inventory (NWI) data for Site 7-1.





Figure 34 – View looking south from Alloway Friesburg Road into the interior of Site 7-1 (Photo 1 in Figure 38)



Figure 35 – View north along Aldine Road at the intersection of Earnest Garton Road, into the interior of Site 7-3 (Photo 2 in Figure 38).



Figure 36 – View eastward across agricultural fields along Aldine Road within Site 7-2 (Photo 3 in Figure 38).



Figure 37 – View of forested area along the western edge of Site 7-2, near the intersection of Earnest Garton and Thomas Roads (Photo 4 in Figure 38).



## Site 7-2 Photo Location Map

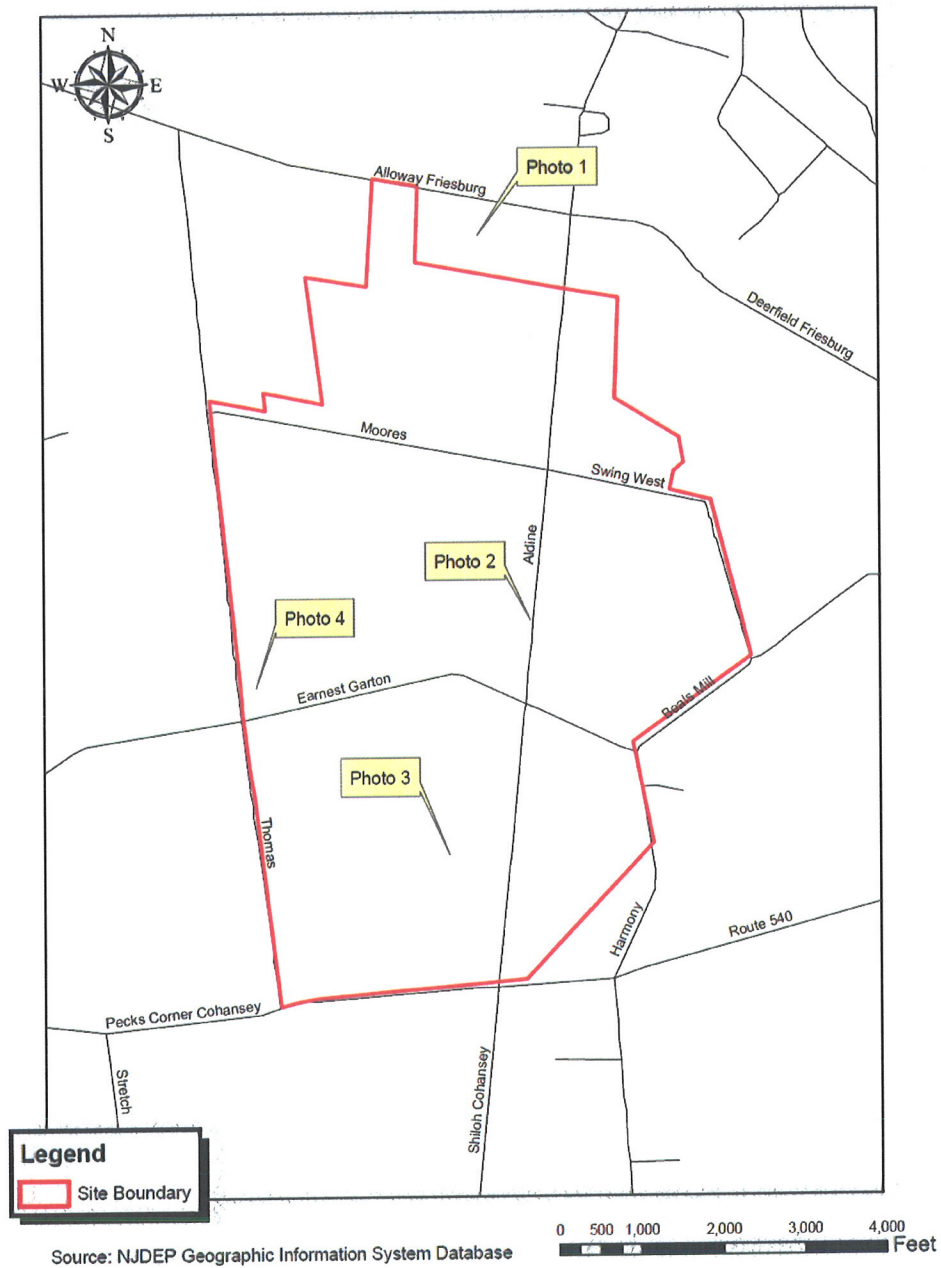
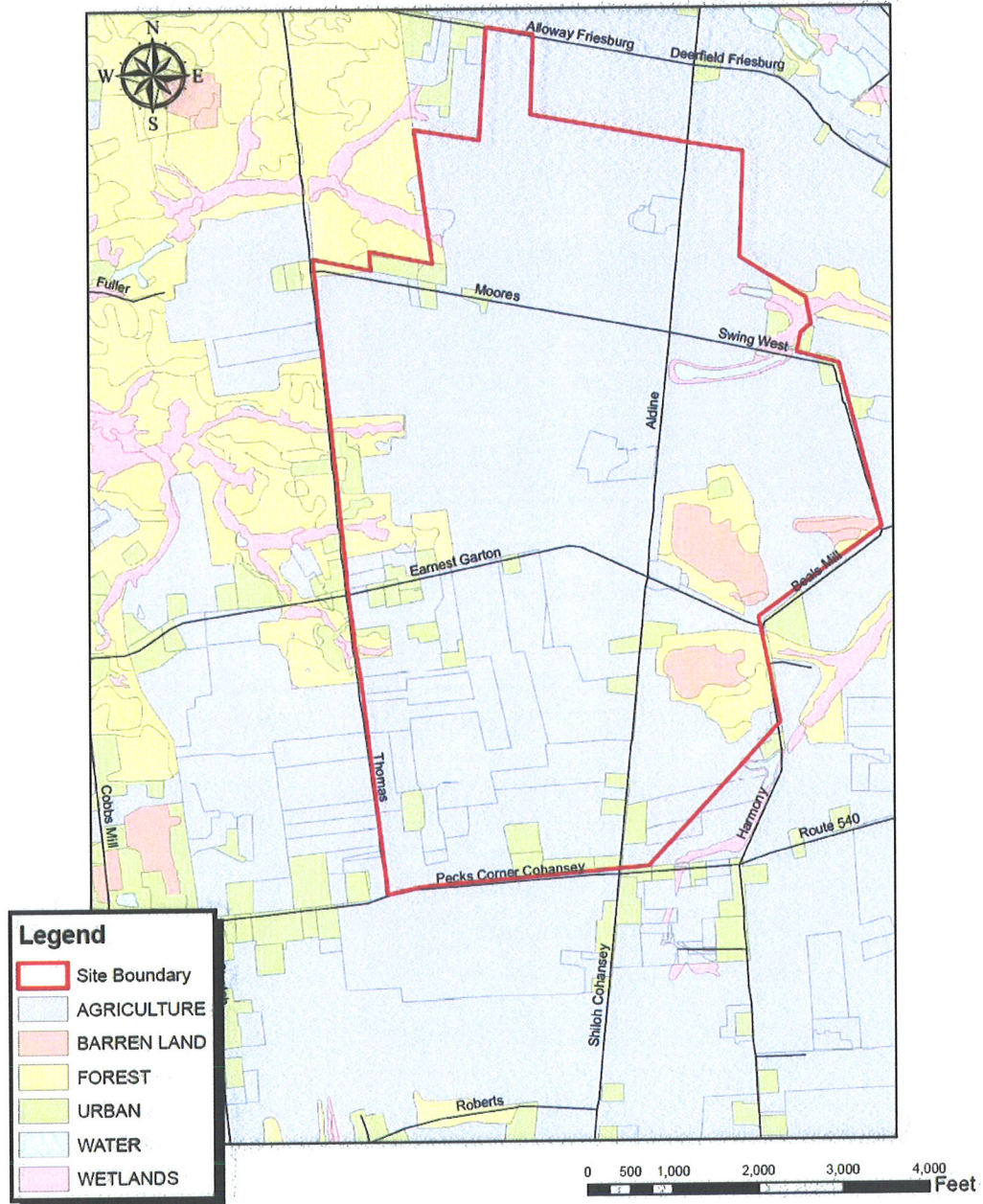


Figure 38 – Photo location map for Site 7-2.

## Site 7-2 Land Use Map



Source: NJDEP Geographic Information System Database

Figure 39 – NJDEP Land Use Classification Area Map for Site 7-2.



## Site 7-2 Landscape Project Data Map No.1

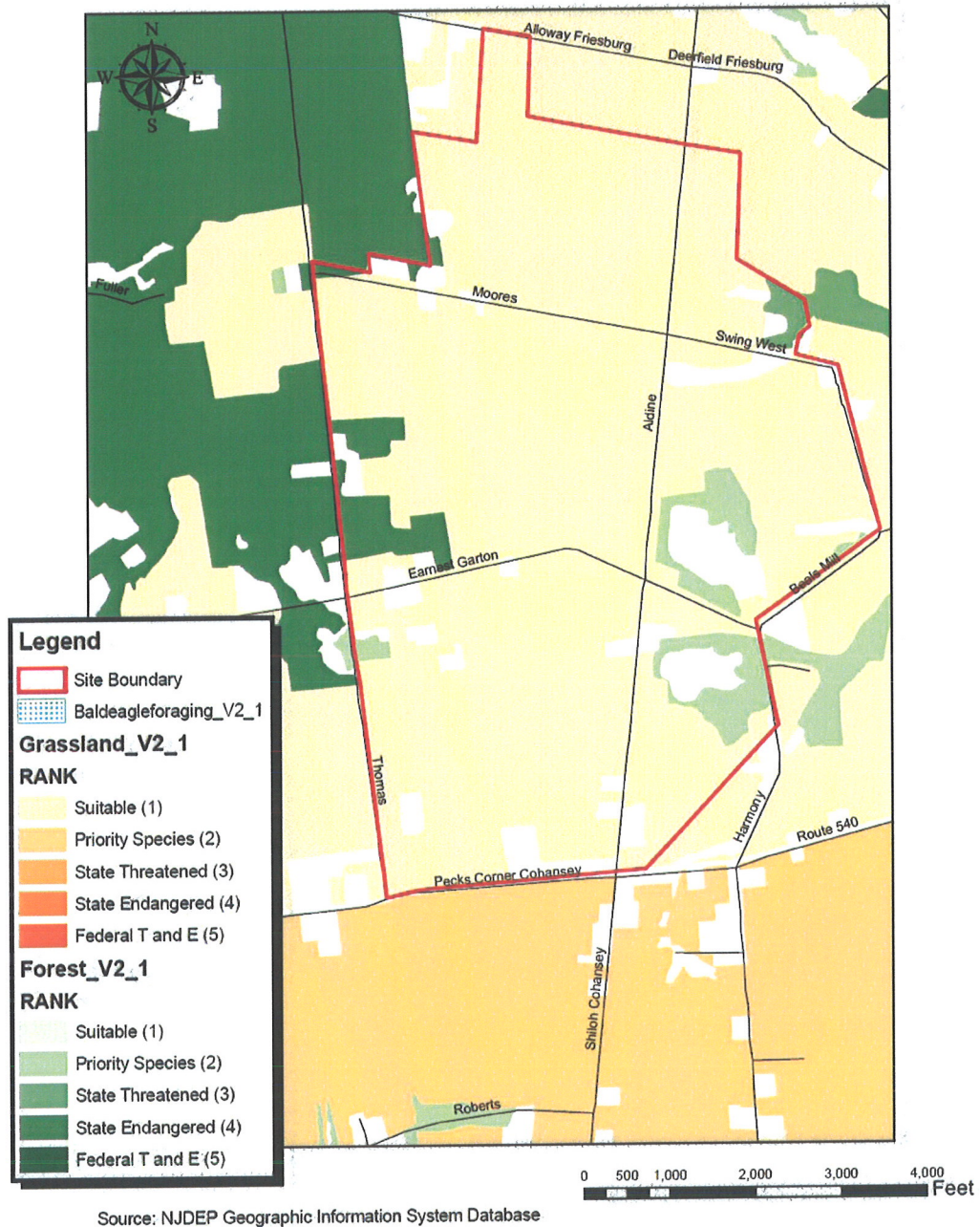


Figure 40 – NJDEP Landscape Project (Grassland and Forest) data for Site 7-2.



## Site 7-2 Landscape Project Data Map No.2

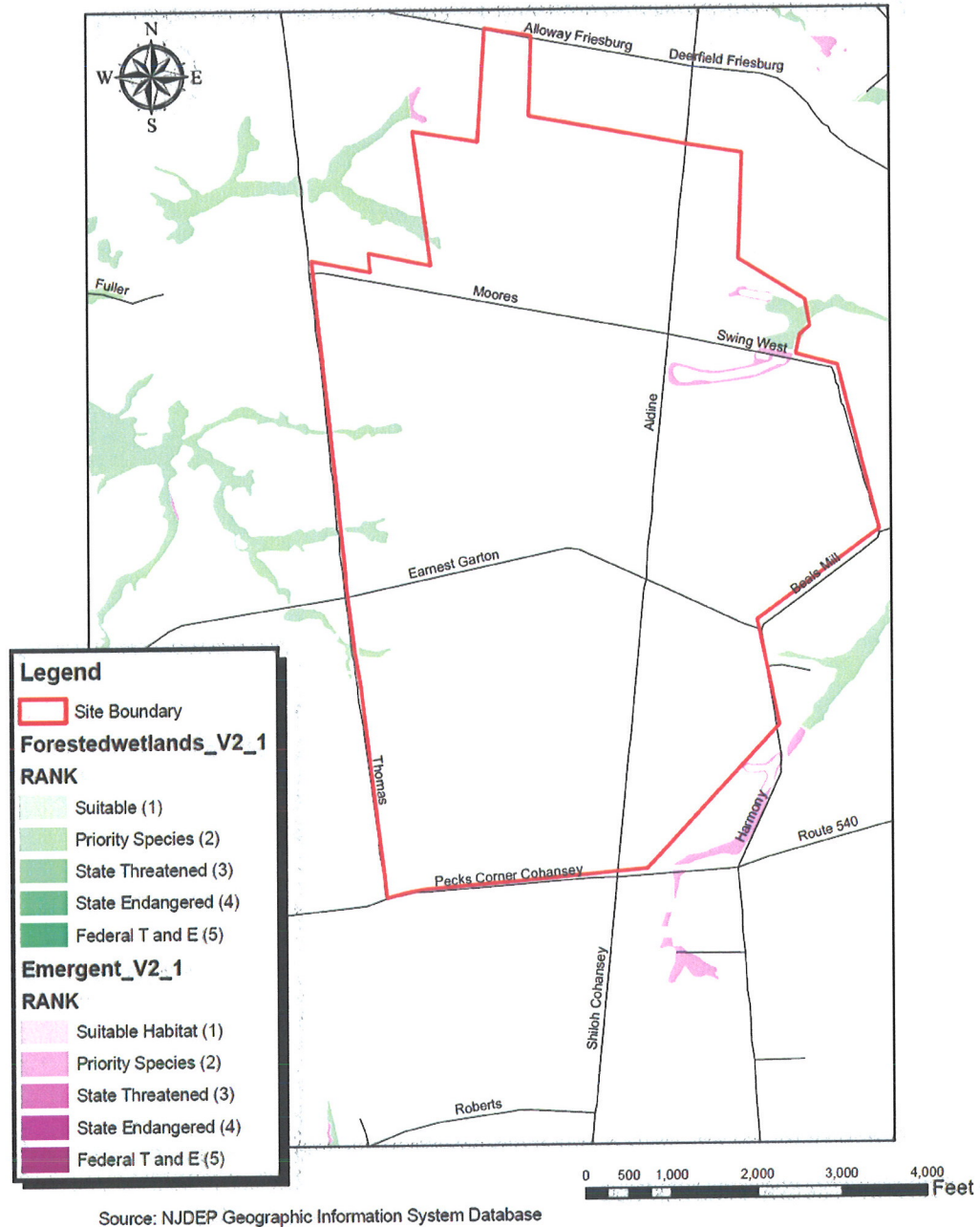


Figure 41 – NJDEP Landscape Project (Forested and Emergent Wetlands) data for Site 7-2.

## Site 7-2 Natural Resources Map

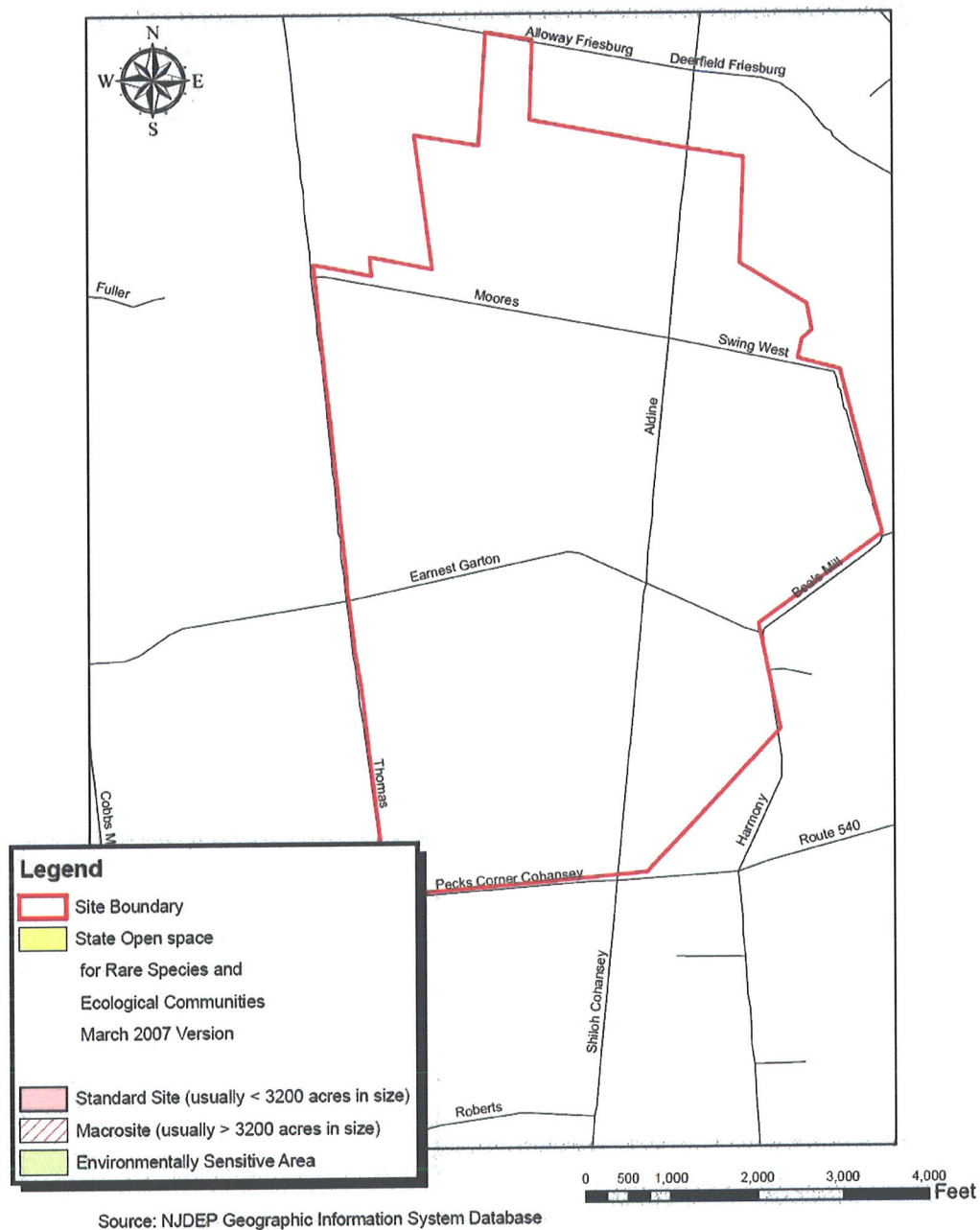
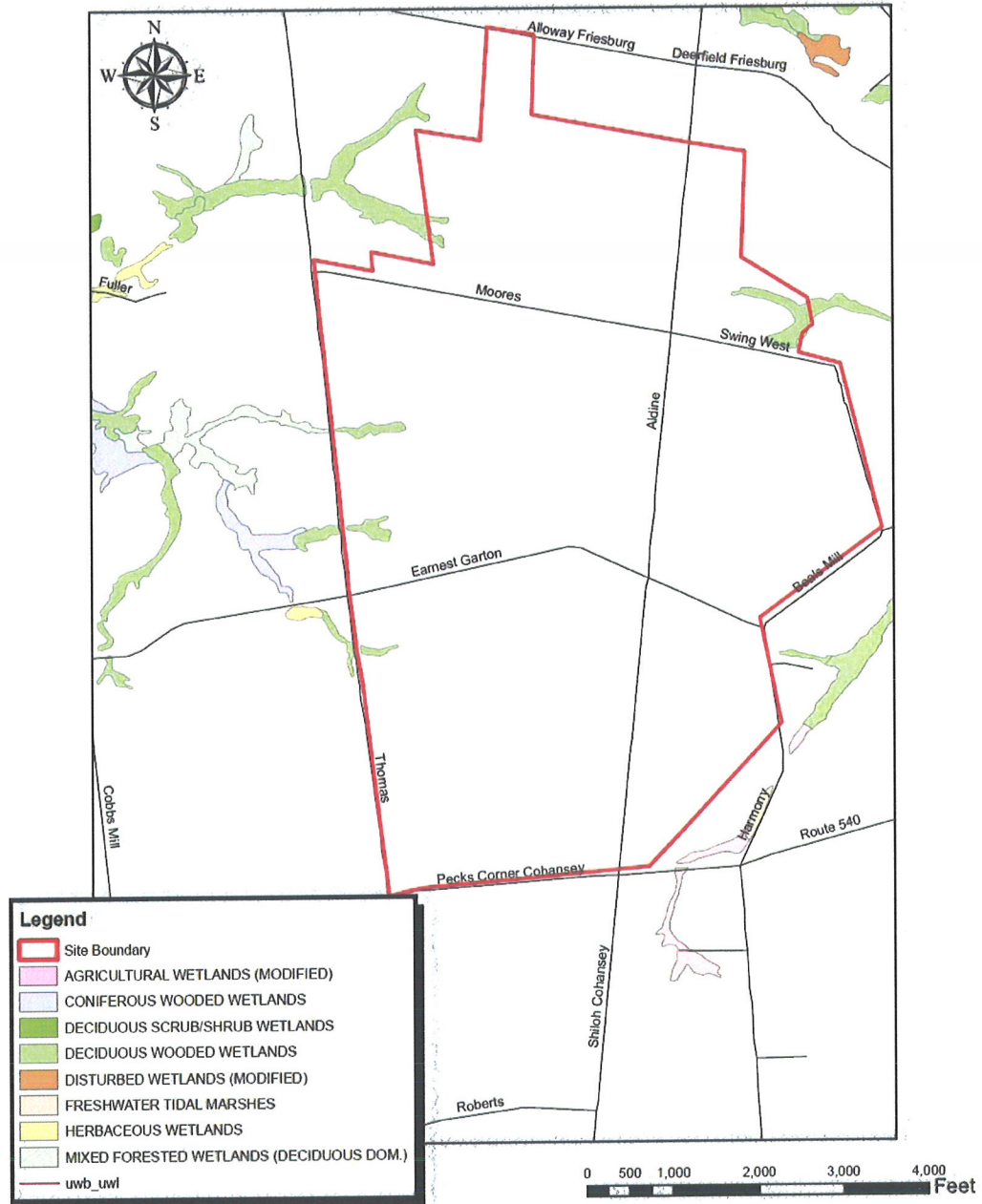


Figure 42 – NJDEP Natural Resources Areas data for Site 7-2.

## Site 7-2 NJDEP Wetland Map



Source: NJDEP Geographic Information System Database

Figure 43 – NJDEP Wetlands Classification data for Site 7-2.



## Site 7-2 NWI Wetland Map

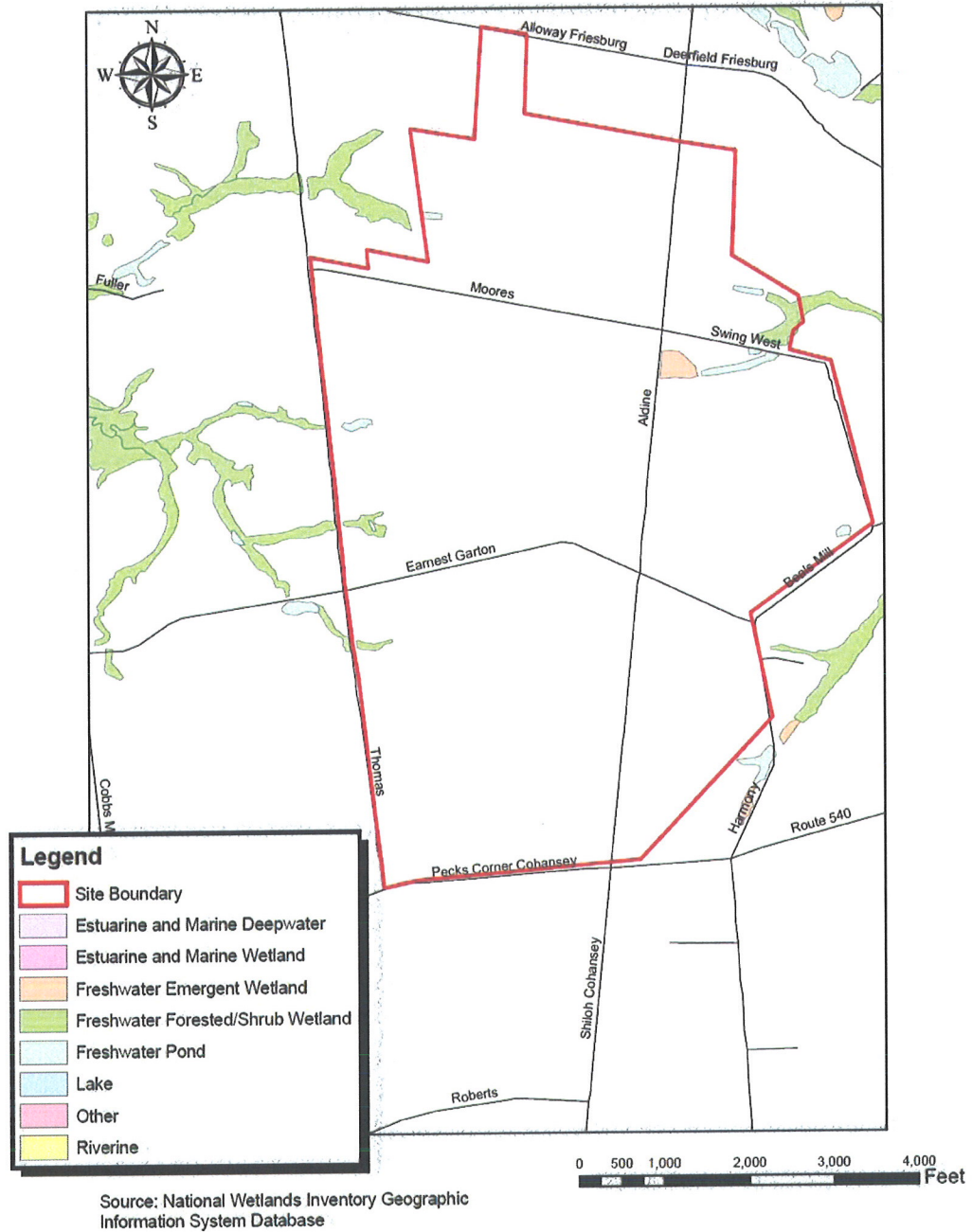


Figure 44 – National Wetlands Inventory (NWI) data for Site 7-2.



Figure 45 – View looking west along Bayside Road within Site 7-3 (Photo 1 in Figure 49).



Figure 46 – Agricultural field and forested area within Site 7-3 (Photo 2 in Figure 49).





Figure 47 – Agricultural fields and forested buffer in the interior of Site 7-3 (Photo 3 in Figure 49).



Figure 48 – Forested area near the PSEG-owned public access facilities in the interior of Site 7-3 (Photo 4 in Figure 49).



## Site 7-3 Photo Location Map

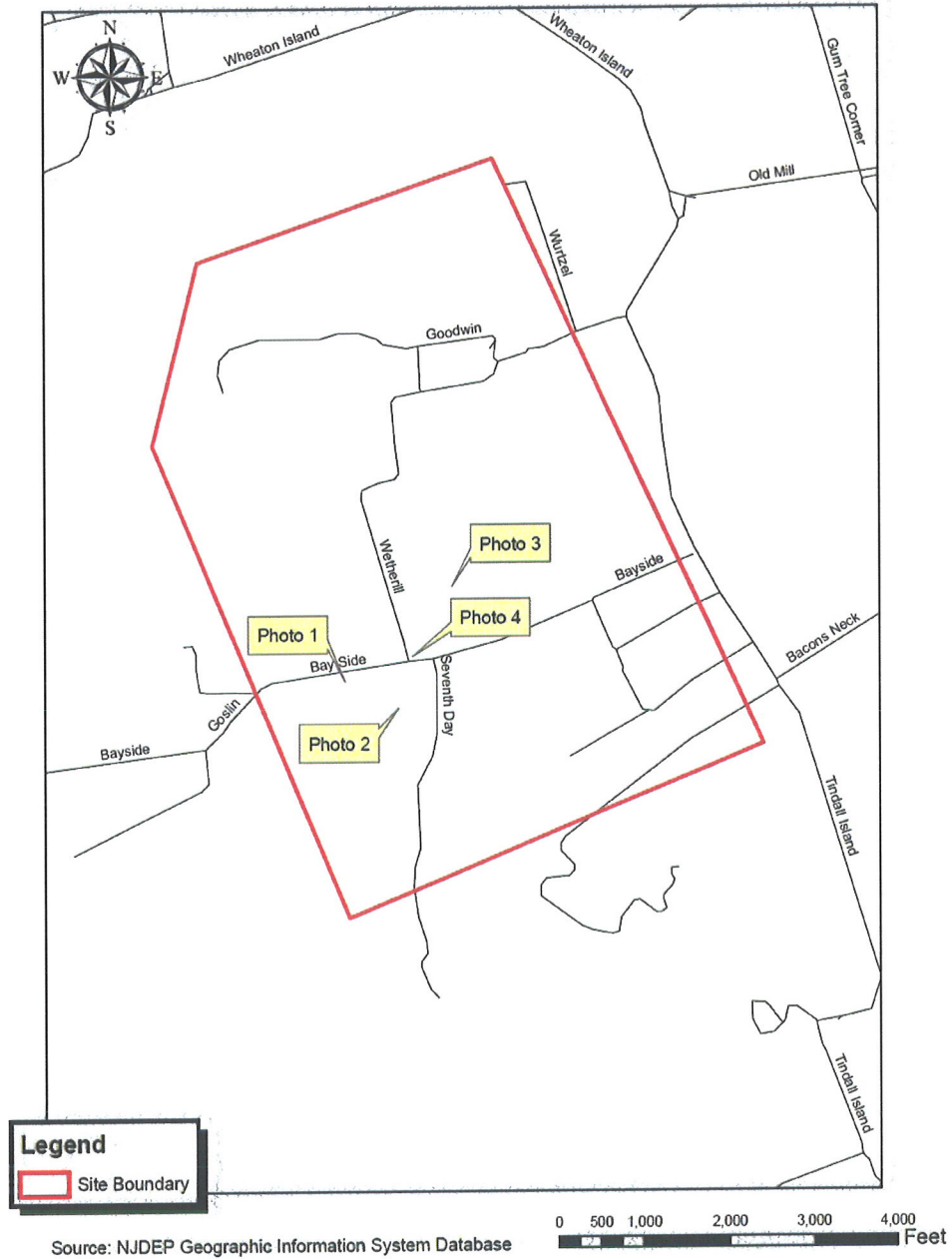


Figure 49 – Photo location map for Site 7-3.

## Site 7-3 Land Use Map

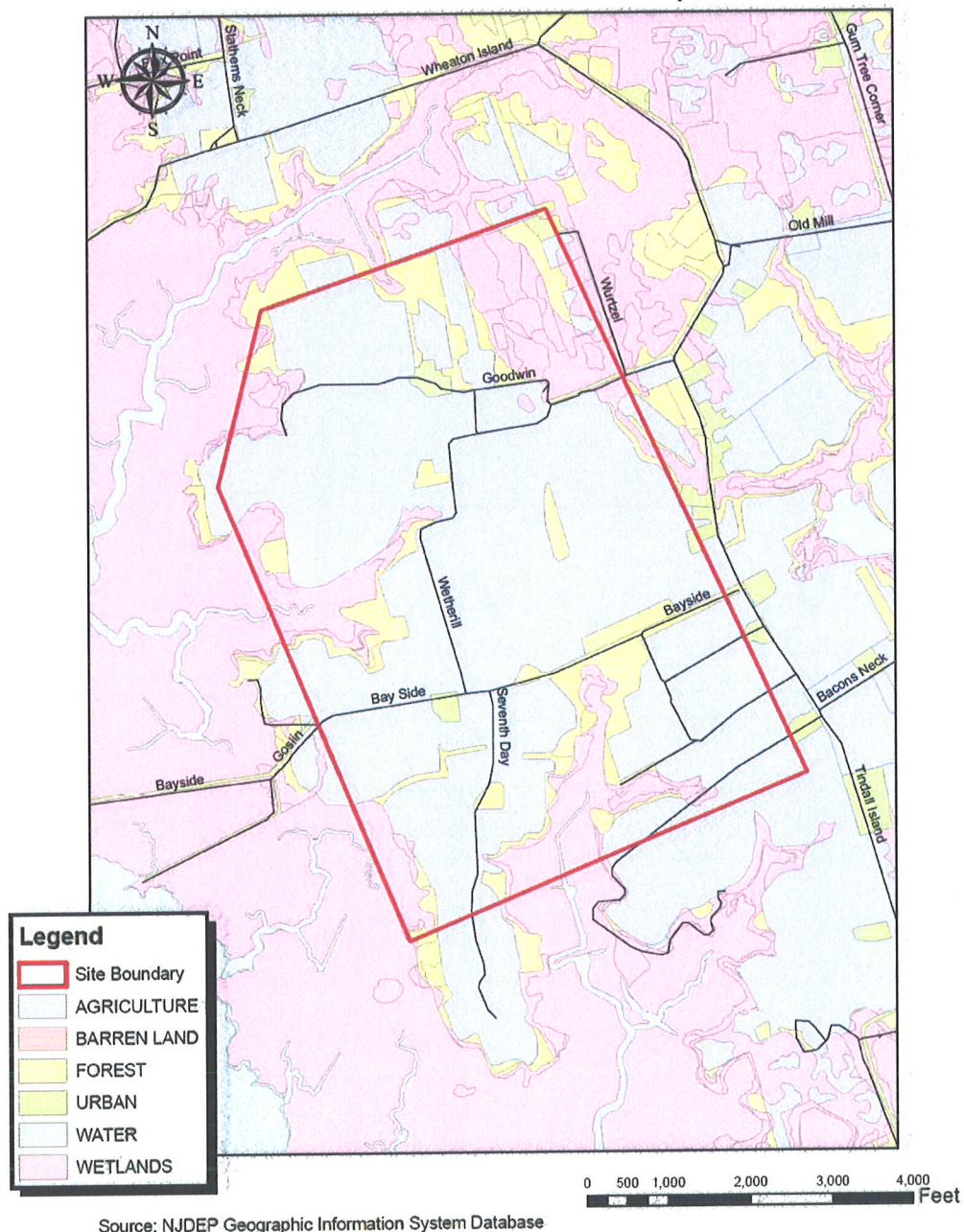


Figure 50 – NJDEP Land Use Classification Area data for Site 7-3.



## Site 7-3 Landscape Project Data Map No.1

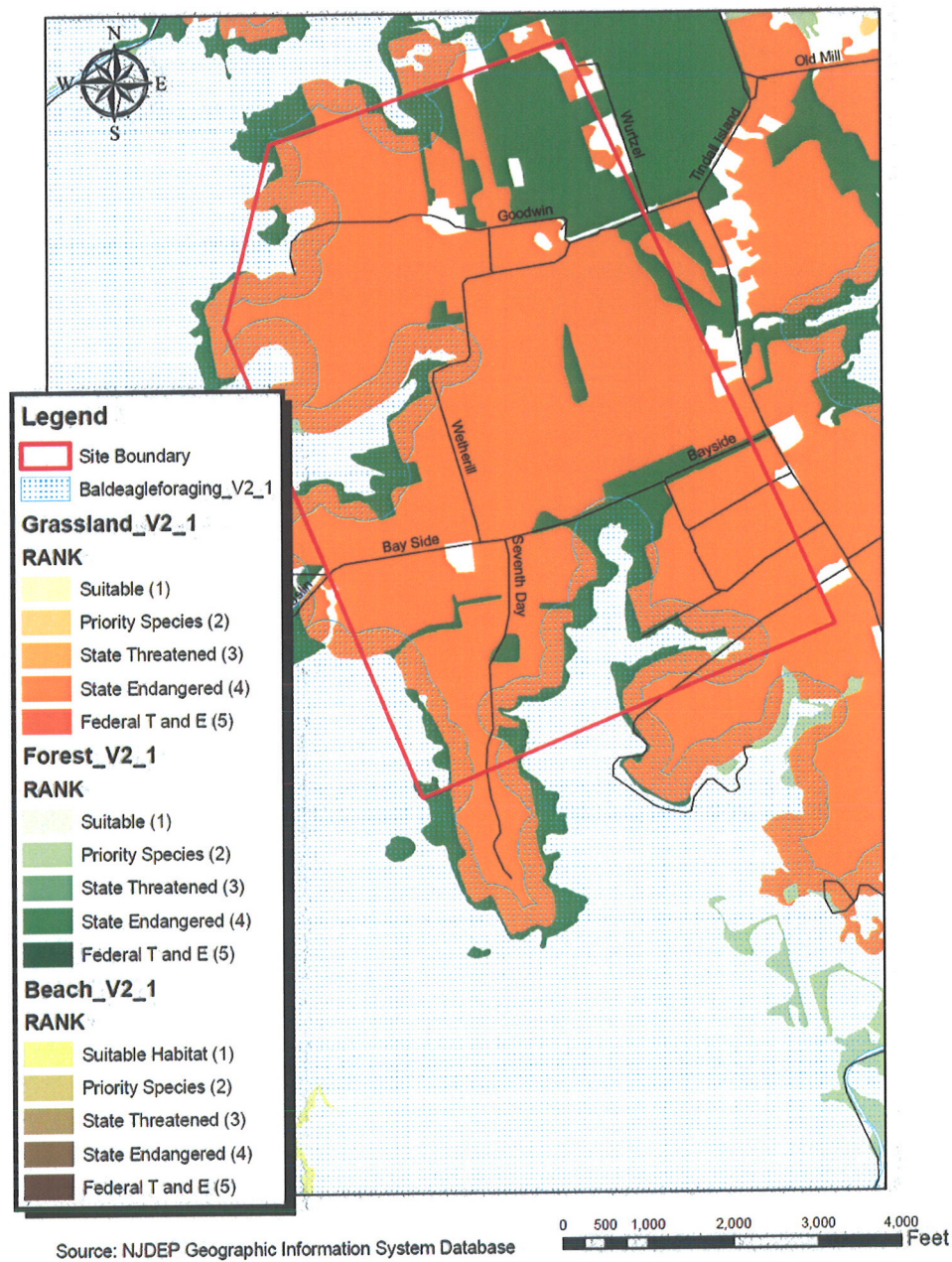


Figure 51 – NJDEP Landscape Project (Grassland, Forest, and Beach) data for Site 7-3.



## Site 7-3 Landscape Project Data Map No.2

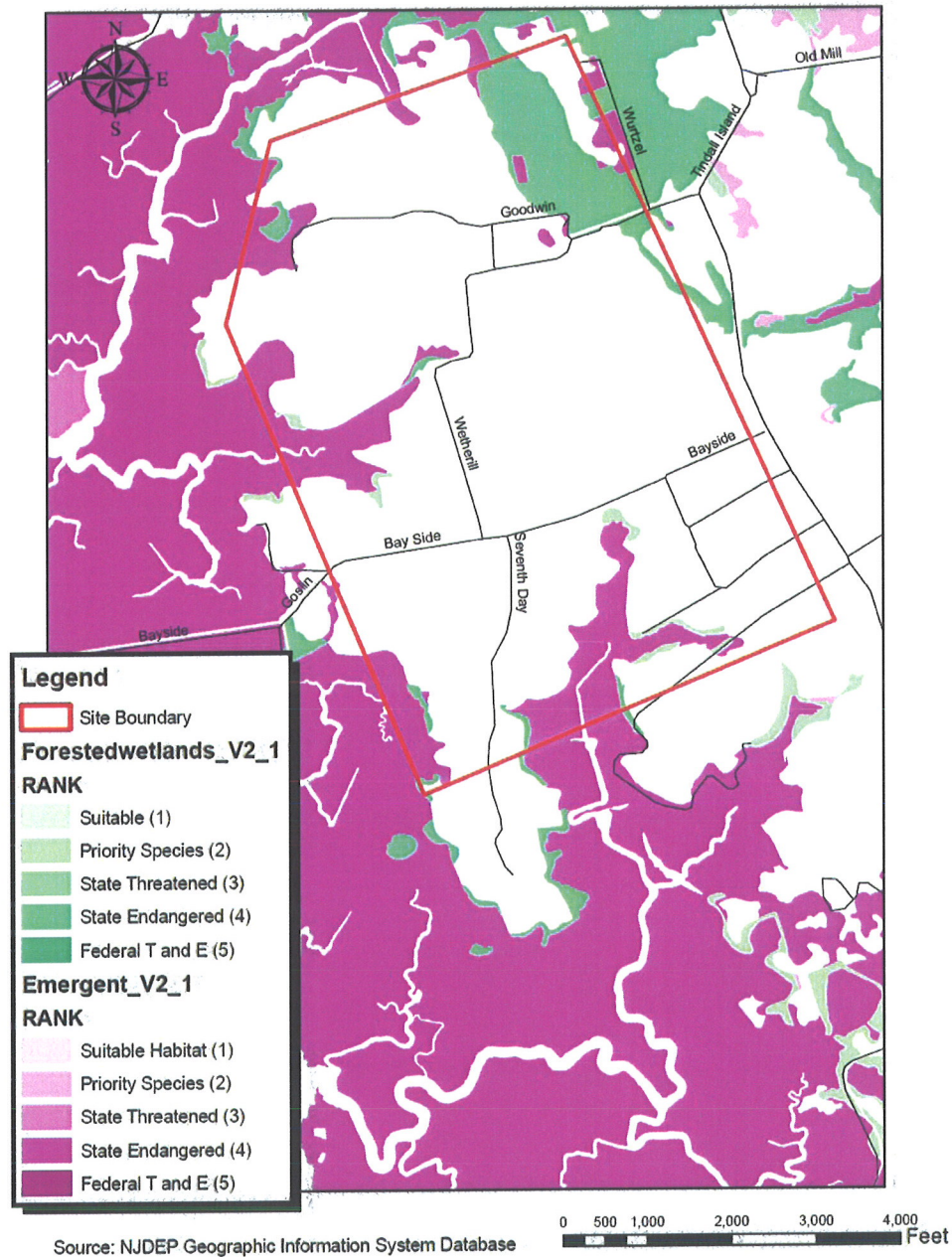


Figure 52 – NJDEP Landscape Project (Forested and Emergent Wetlands) data for Site 7-3.

## Site 7-3 Natural Resources Map

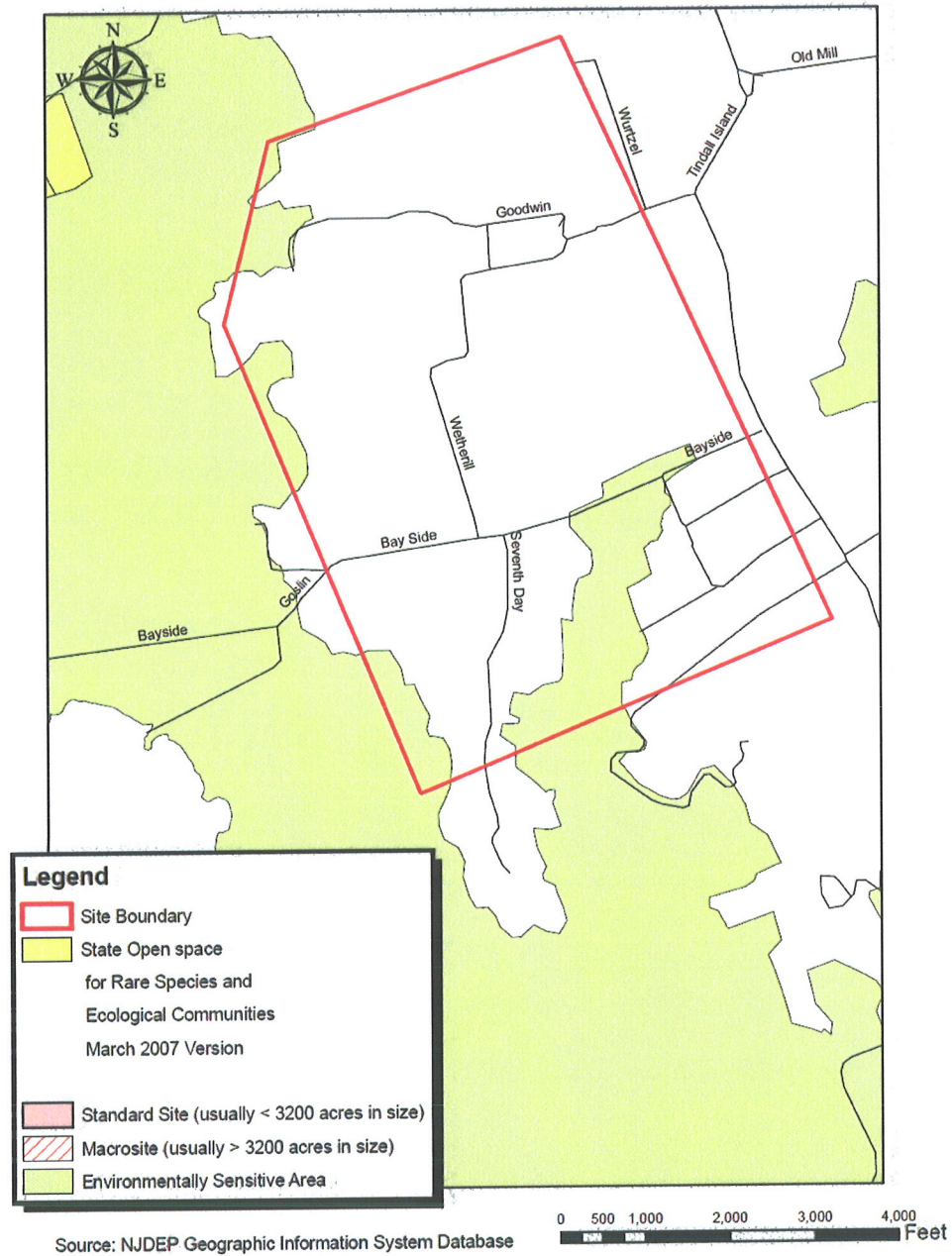


Figure 53 – NJDEP Natural Resource Areas data for Site 7-3.



# Site 7-3 NJDEP Wetland Map

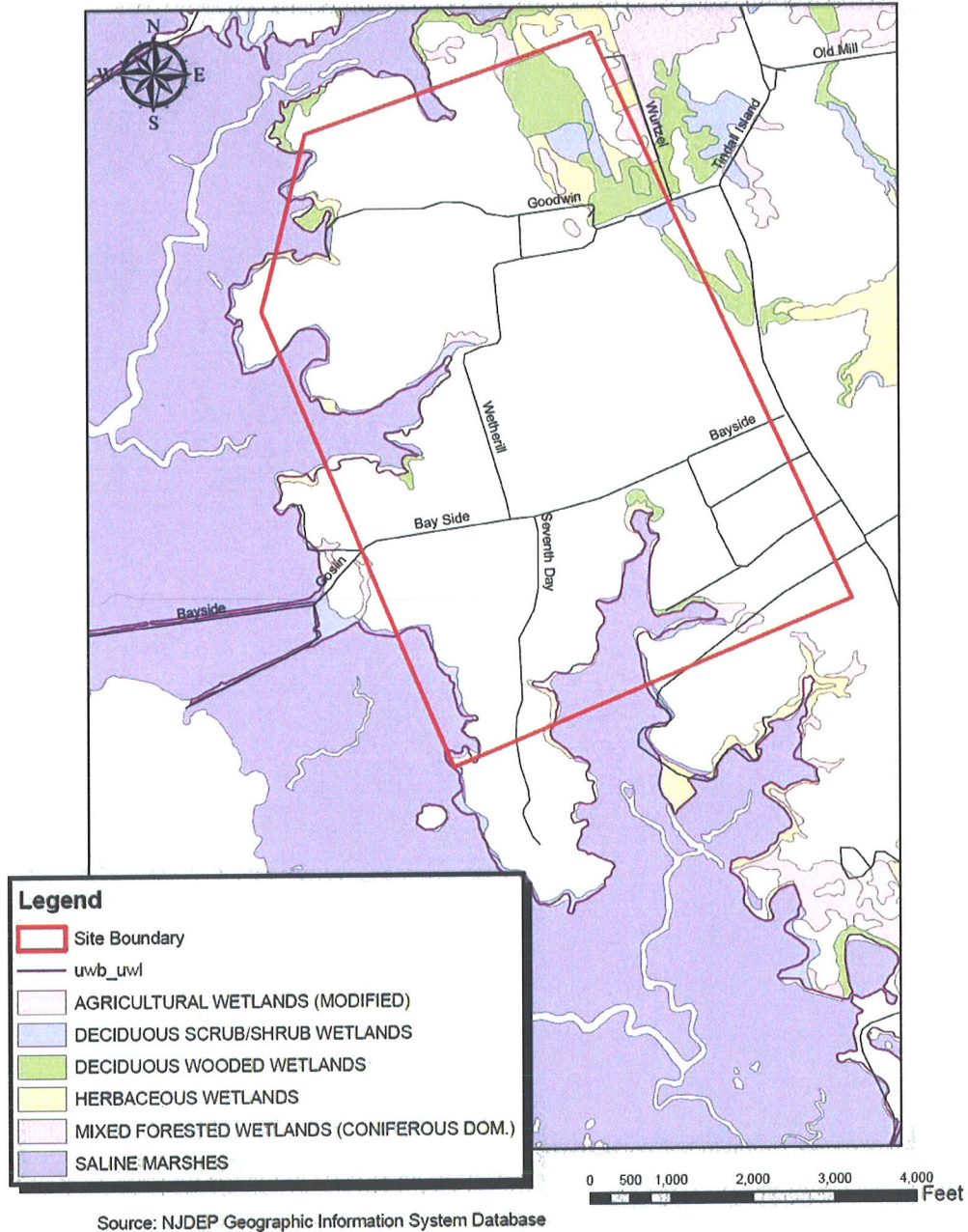


Figure 54 – NJDEP Wetlands Classification data for Site 7-3.



## Site 7-3 NWI Wetland Map

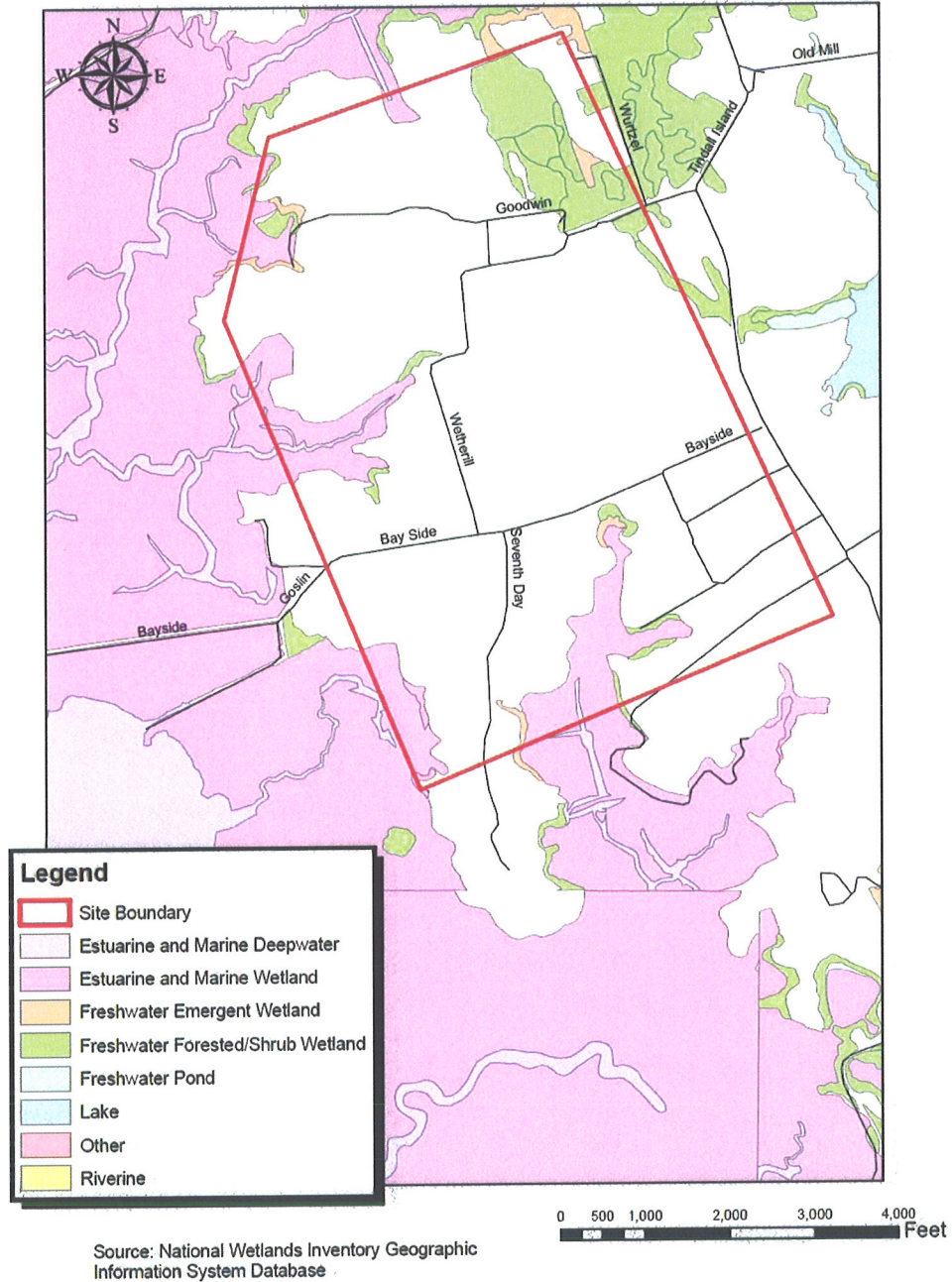


Figure 55 – National Wetlands Inventory (NWI) data for Site 7-3.