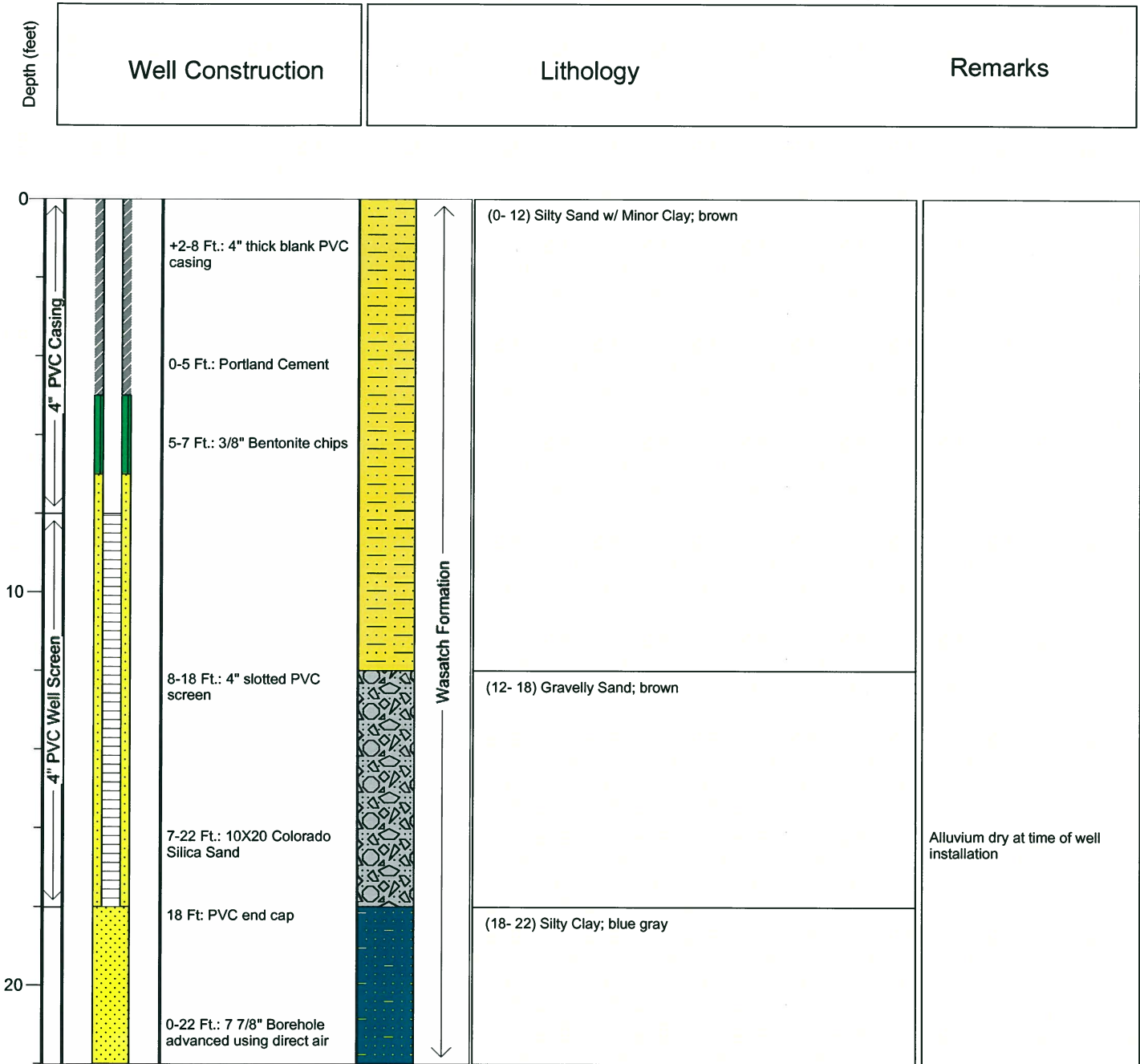




Cameco Resources
NRC SOURCE MATERIAL
LICENSE SUA-1548

Project: North Butte Remote Satellite
Location: T44N, R76W, Sec. 26 SENW
Drilled by: Crimm Drilling
Date started: 11/2/11
Date completed: 11/2/11

Well Name: WCA #1
Drilling Method: Direct Air Rotary
Logged by: J. Nielsen
Total depth: 22 Ft.
Elev.: 4905 Ft.



Notes: This figure presents the completion details for WCA #1, a 4 inch diameter monitoring well completed in the alluvium of Willow Creek. The alluvium was first detected in borehole WC#2. Although the gravel was dry, it may be saturated in the spring. Therefore, WCA #1 was drilled and completed in the alluvium of Willow Creek. WCA #1 is offset approximately seven feet east of WC #2. WCA #1 is located in the flood plain of Willow Creek approximately 13 feet above the Thalweg of the channel.

Figure 3.4.3 WCA #1 Well Completion Log