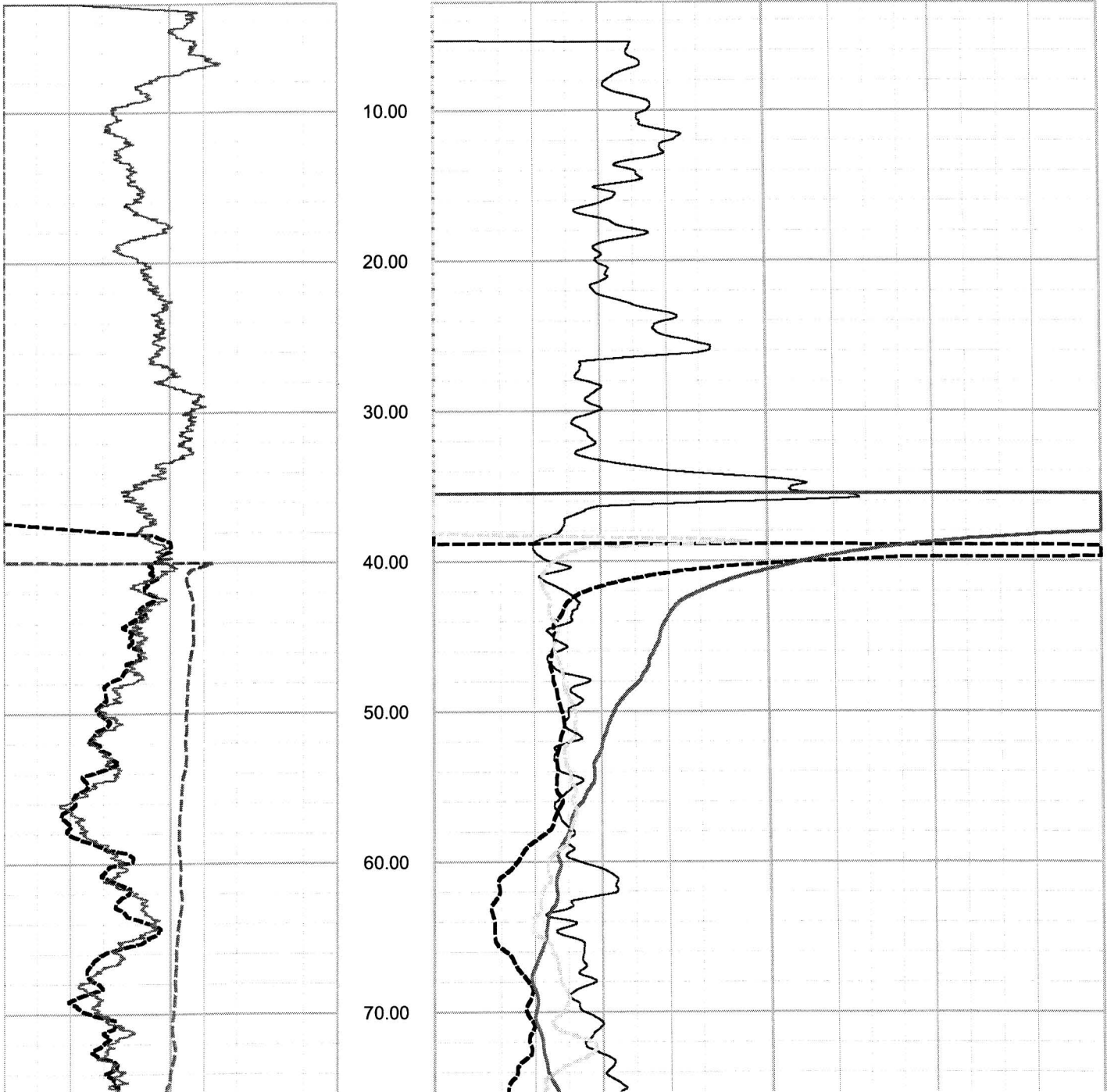


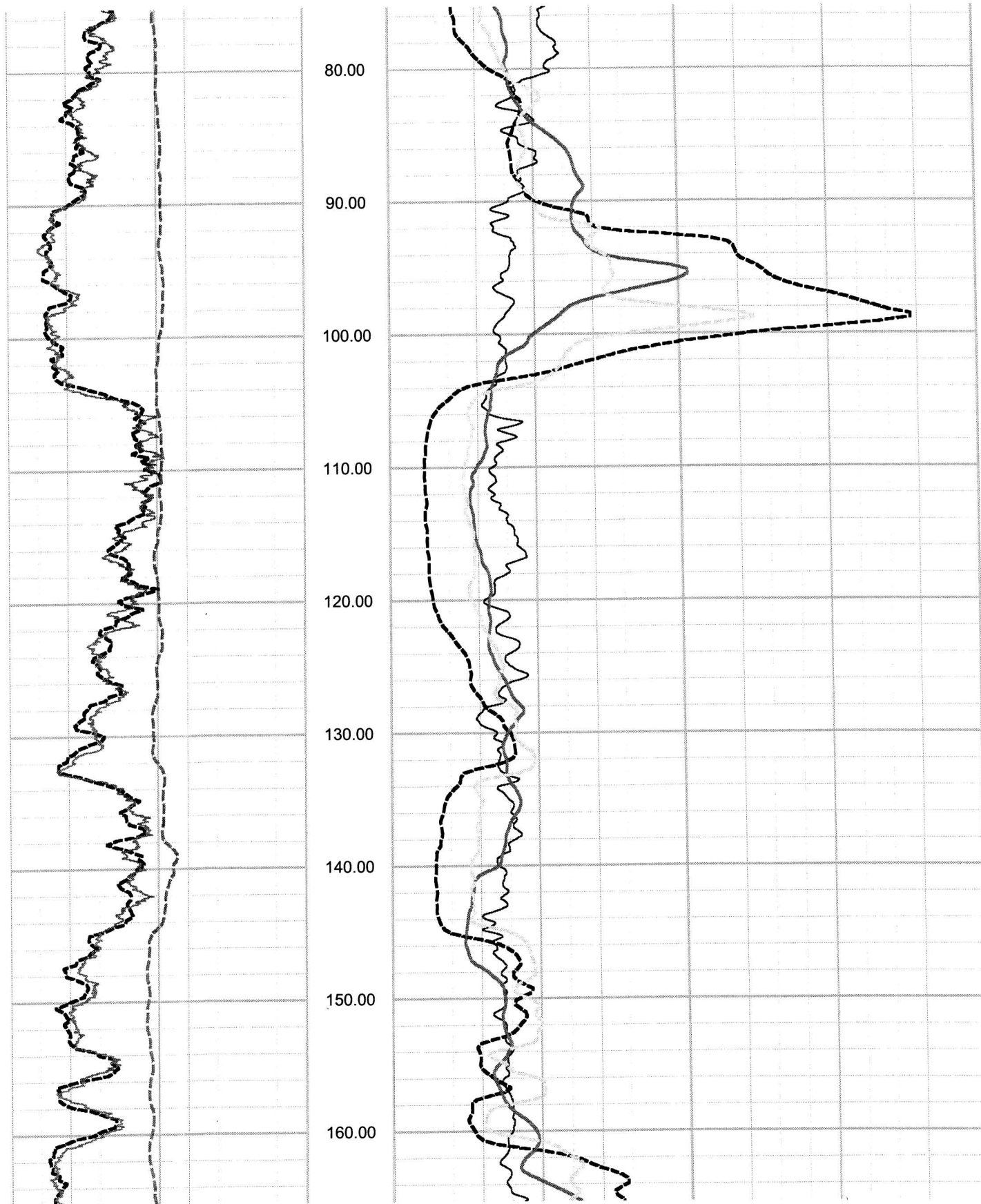
0.00	NGAM API Cs.	100.00
<hr style="border-top: 1px dashed black;"/>		
-100.00	SP Millivolt	100.00
<hr style="border-top: 1px dashed black;"/>		
0.00	CGAM API Cs.	100.00

2.00	CALP Inch	22.00
<hr style="border-top: 1px solid black;"/>		
0.00	SHN Ohm M.	100.00
<hr style="border-top: 1px dashed black;"/>		
0.00	LON Ohm M.	100.00
<hr style="border-top: 1px solid black;"/>		
0.00	SPR Ohm	100.00

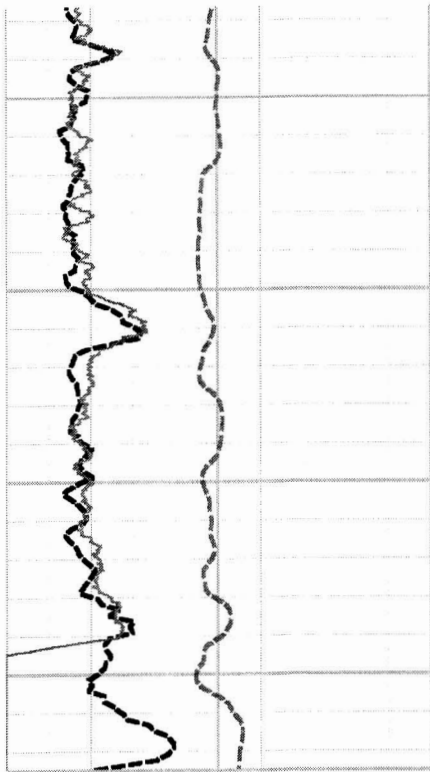
Depth (ft)



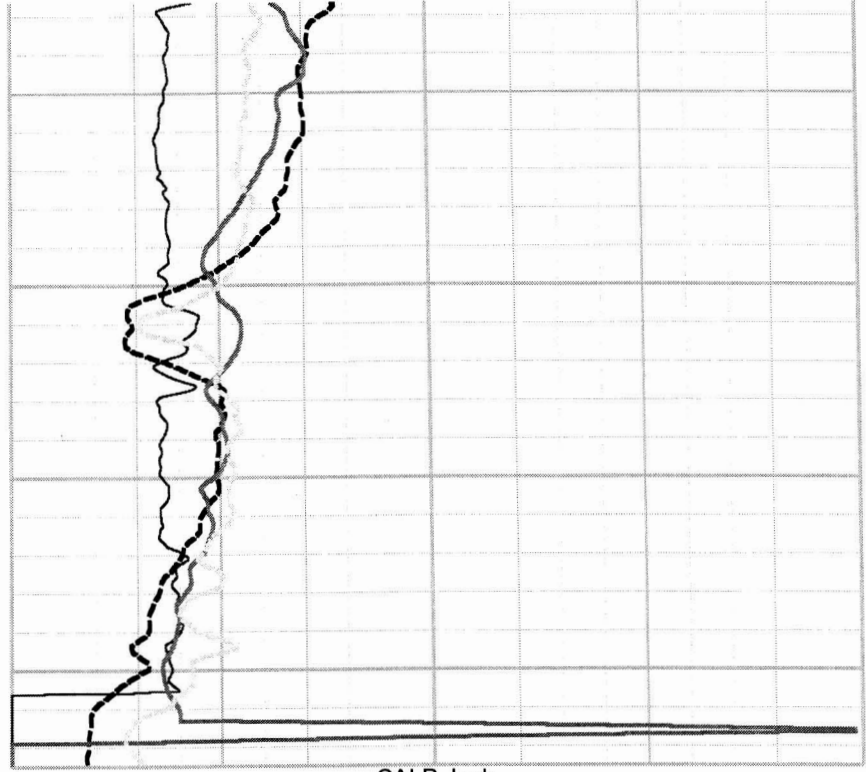
Victoria County COL Boring B-2162A OFFSET ELOG, Caliper and Natural Gamma rev 1 Sheet 2 of 4



Victoria County COL Boring B-2162A OFFSET ELOG, Caliper and Natural Gamma rev 1 Sheet 3 of 4



0.00	NGAM API Cs.	100.00
-100.00	SP Millivolt	100.00
0.00	CGAM API Cs.	100.00



2.00	CALP Inch	22.00
0.00	SHN Ohm M.	100.00
0.00	LON Ohm M.	100.00
0.00	SPR Ohm	100.00



VICTORIA

B2174A OFFSET

COMPANY GEOVISION  
WELL B-2174A OFFSET  
FIELD  
COUNTRY  
STATE  
COUNTY  
LAT.:  
LONG.:

OTHER SERVICES

Perm. Da..	Elev	KB	0.00
Log. Da..		DF	0.00
Drill Datum		GL	0.00

DATE	09 Nov 07	15 Dec 06	15 Dec 06
RUN#	1	0	0
TYPE OF LOG	ELOG		
DEPTH DRILLER	617.00	0.00	0.00
DEPTH LOGGER	610.00	0.00	0.00
LOG DEEPEST	610.00	0.00	0.00
LOG SHALLOW	40.00	0.00	0.00
FLUID IN HOLE	DRILLING MUD		
SALINITY			
DENSITY			
LEVEL			
MAX TEMP °C	0.00	0.00	0.00
RIG TIME			
RECORDED BY	C. CARTER		
WITNESSED BY			

RUN#	BIT RECORD			CASING RECORD			
	SIZE	FROM	TO	SIZE	WEIGHT	FROM	TO
1	5.88	0.00	619.50	4.00	0.00	0.00	88.00
0	0.00	0.00	0.00	0.00	0.00	0.00	0.00
0	0.00	0.00	0.00	0.00	0.00	0.00	0.00

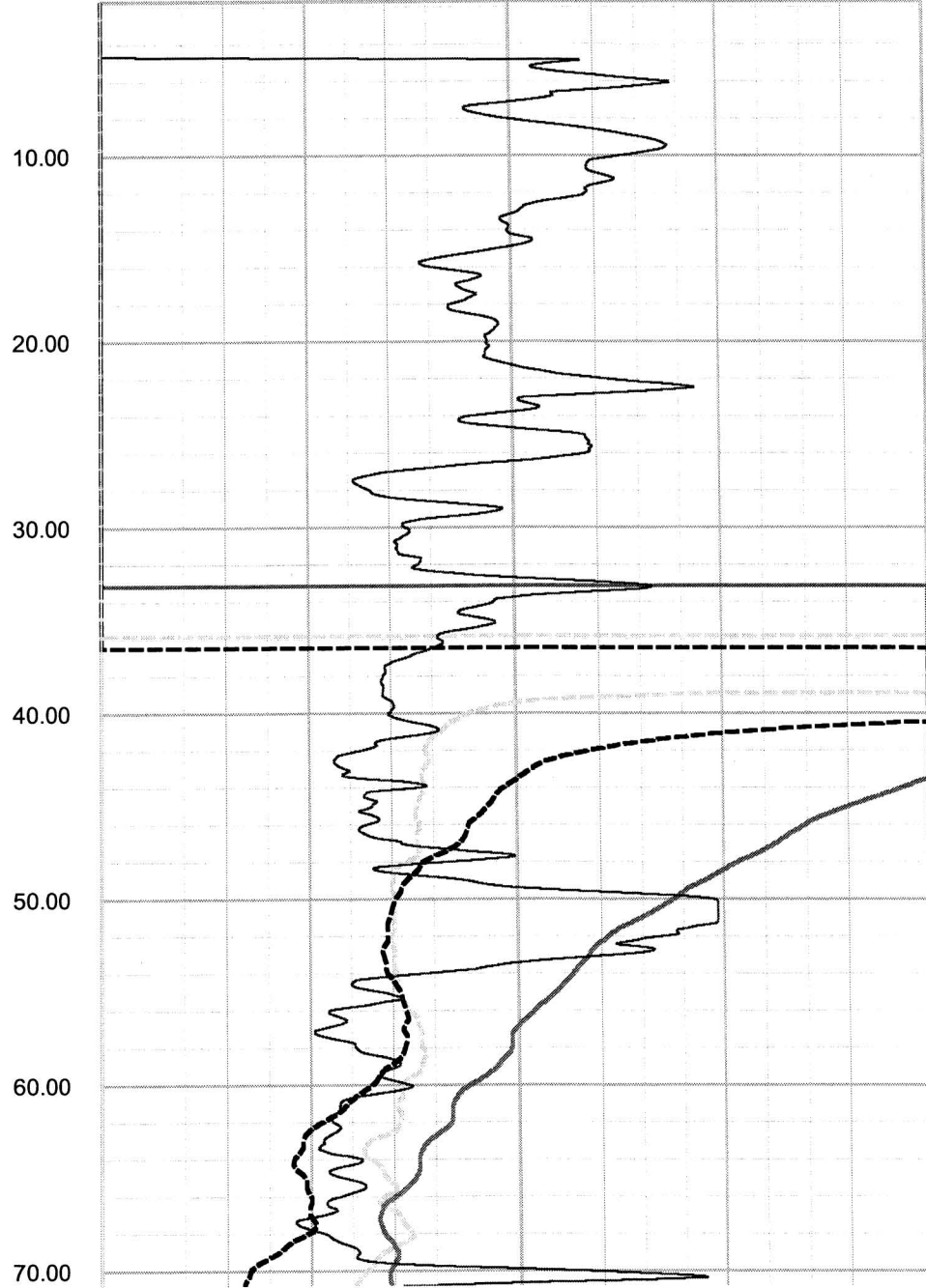
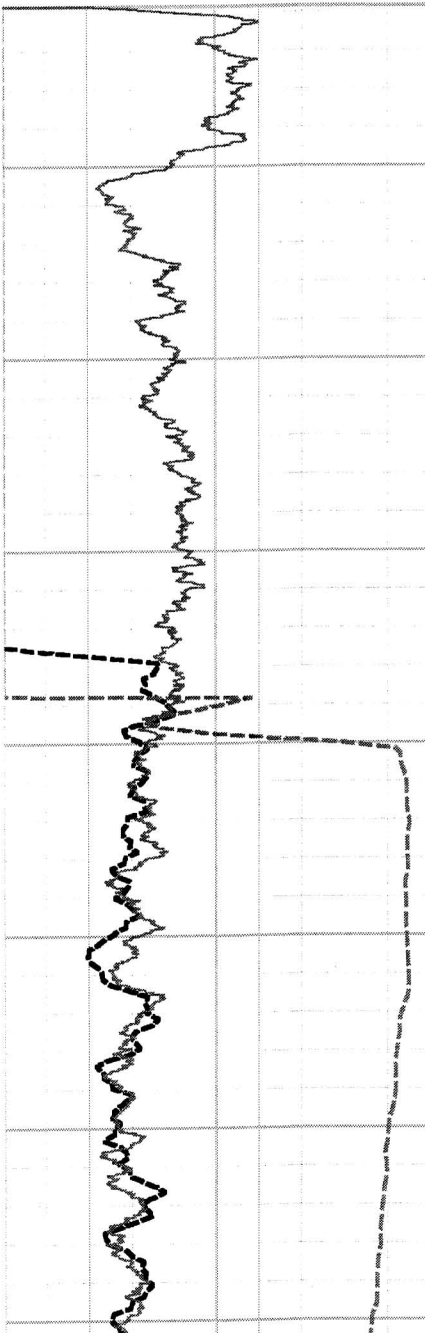
ROBERTSON GEOLOGGING TECHNOLOGY

REMARKS (C:\Data\Victoria County\B-2174A OFFSET 9-1..

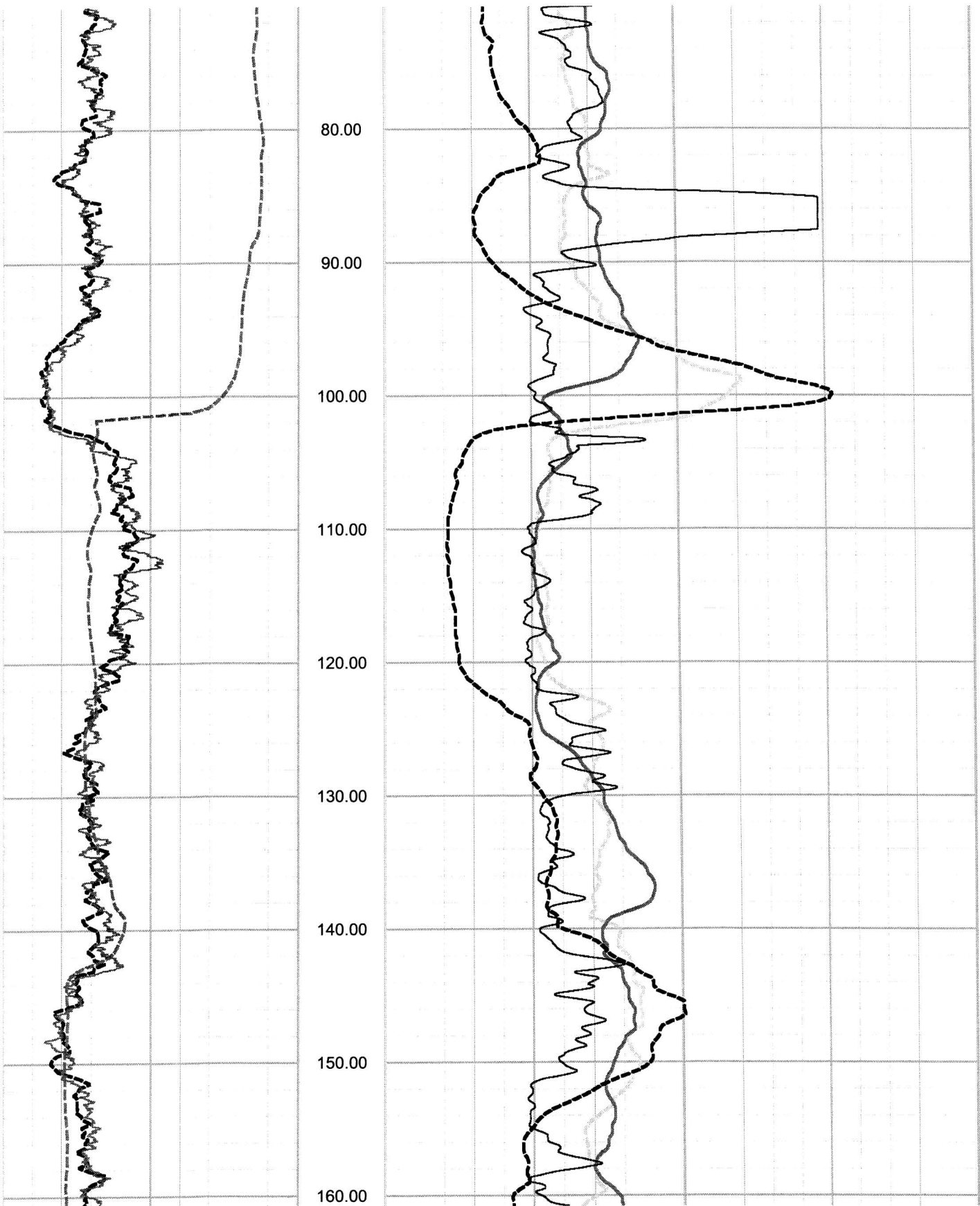
0.00	NGAM API Cs.	100.00
<hr/>		
-100.00	SP Millivolt	300.00
<hr/>		
0.00	CGA1 API Cs.	100.00
<hr/>		
0.00	CGA2 API Cs.	100.00

0.00	SPR Ohm	50.00
<hr/>		
0.00	LON Ohm M.	50.00
<hr/>		
0.00	SHN Ohm M.	50.00
<hr/>		
2.00	CALP Inch	22.00
<hr/>		
2.00	CAL2 Inch	22.00

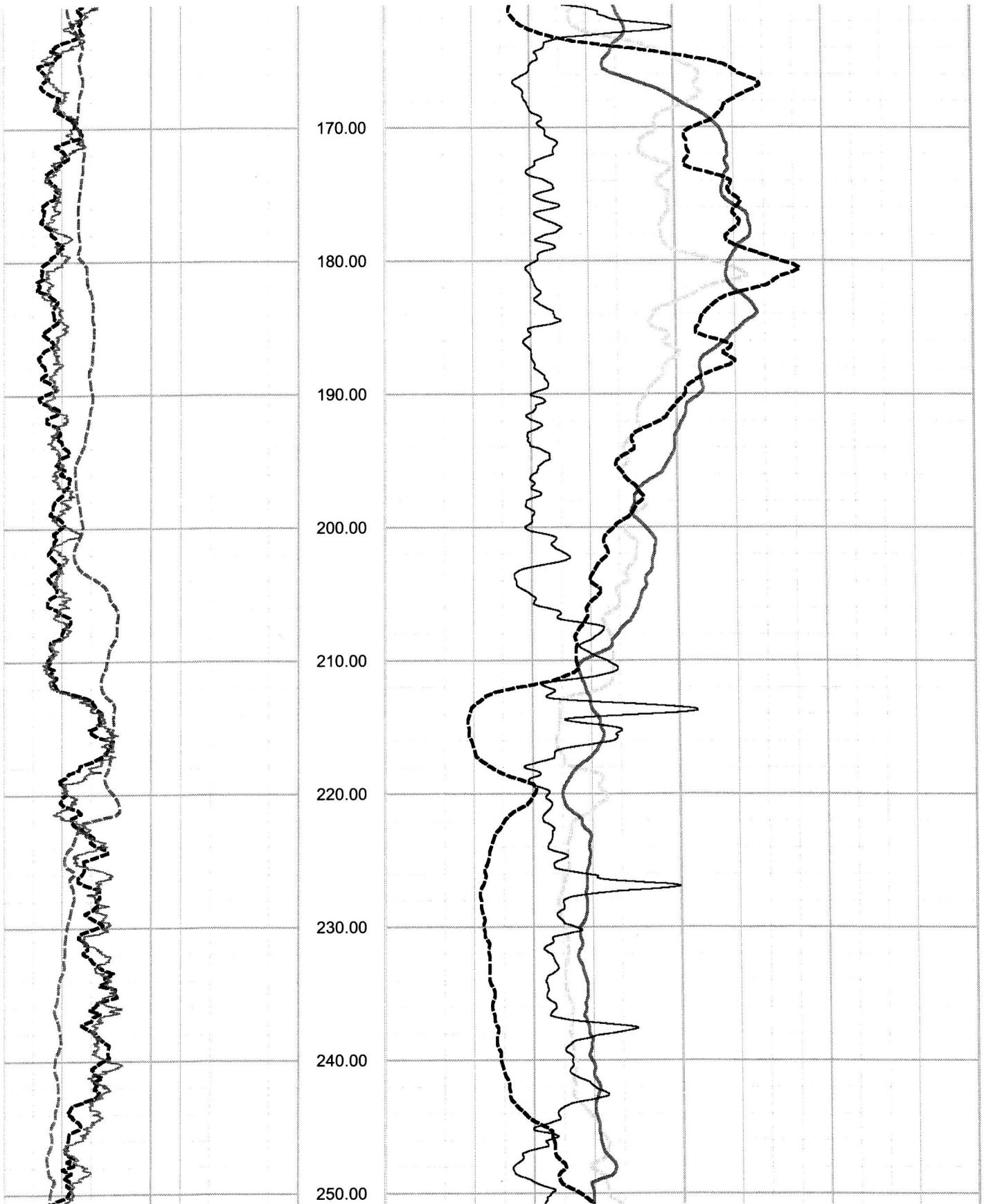
Depth (ft)



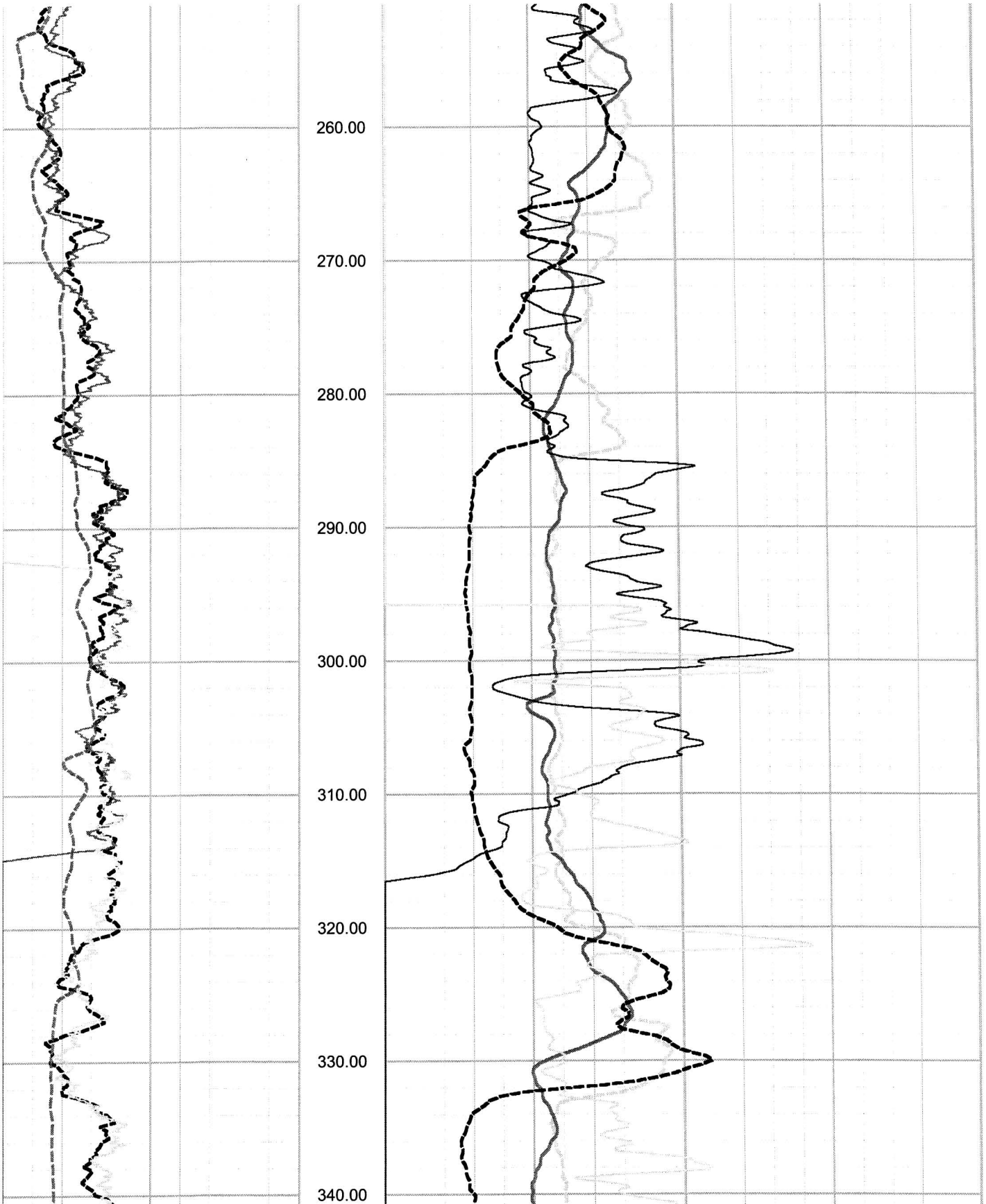
Victoria County COL Boring B-2174A OFFSET ELOG, Caliper and Natural Gamma rev 1 Sheet 2 of 9



Victoria County COL Boring B-2174A OFFSET ELOG, Caliper and Natural Gamma rev 1 Sheet 3 of 9

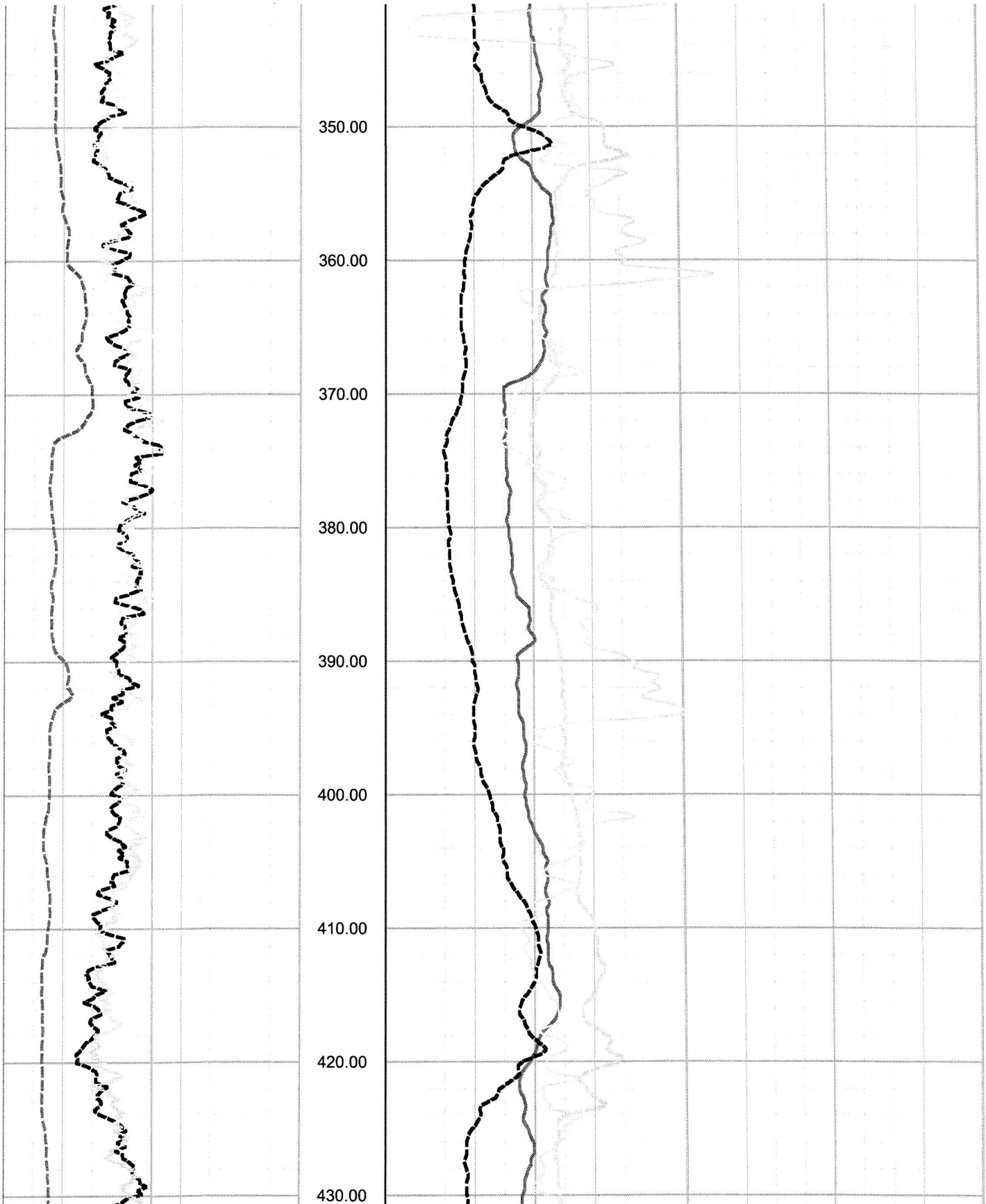


Victoria County COL Boring B-2174A OFFSET ELOG, Caliper and Natural Gamma rev 1 Sheet 4 of 9

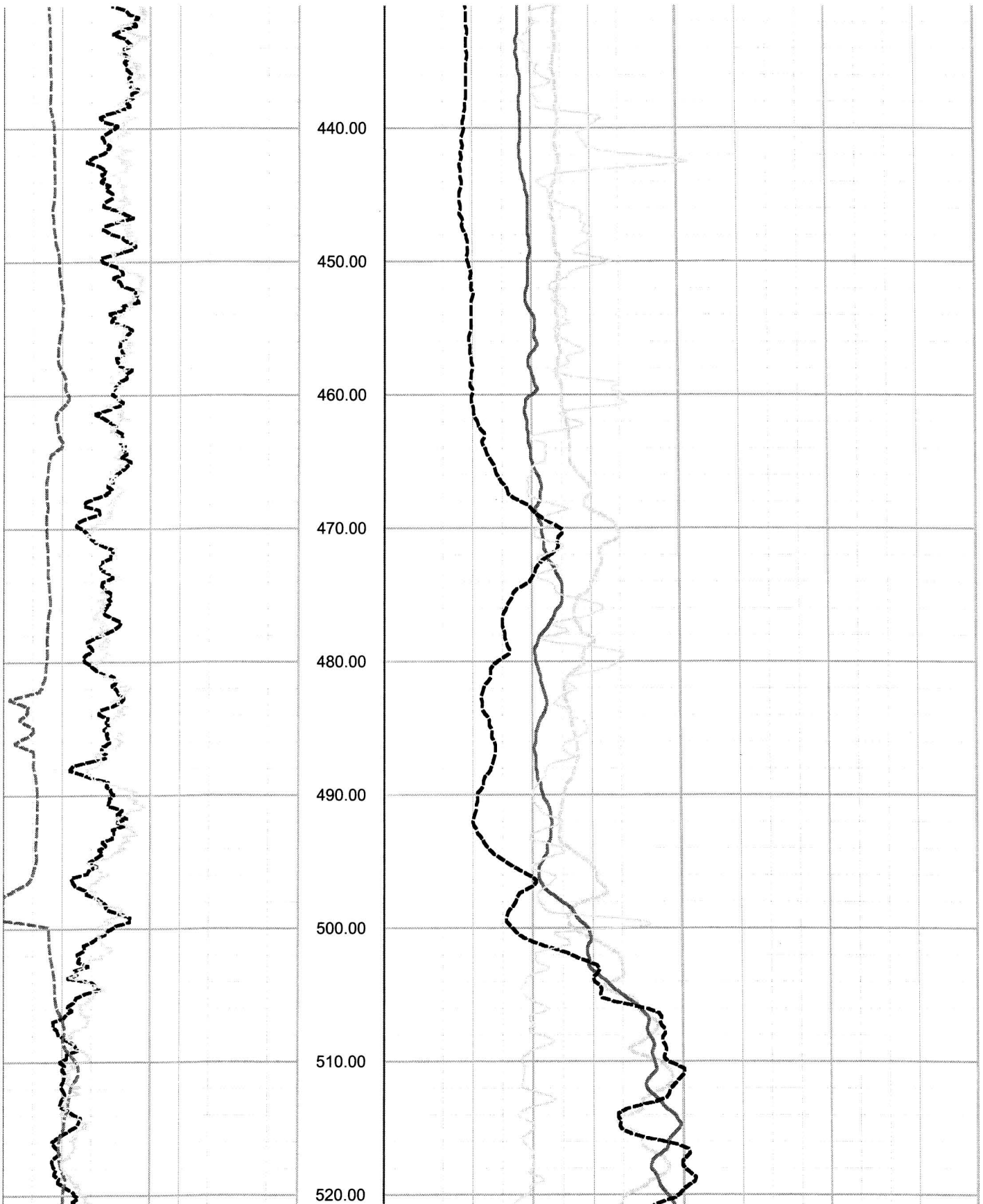


Victoria County COL Boring B-2174A OFFSET ELOG, Caliper and Natural Gamma rev 1 Sheet 5 of 9

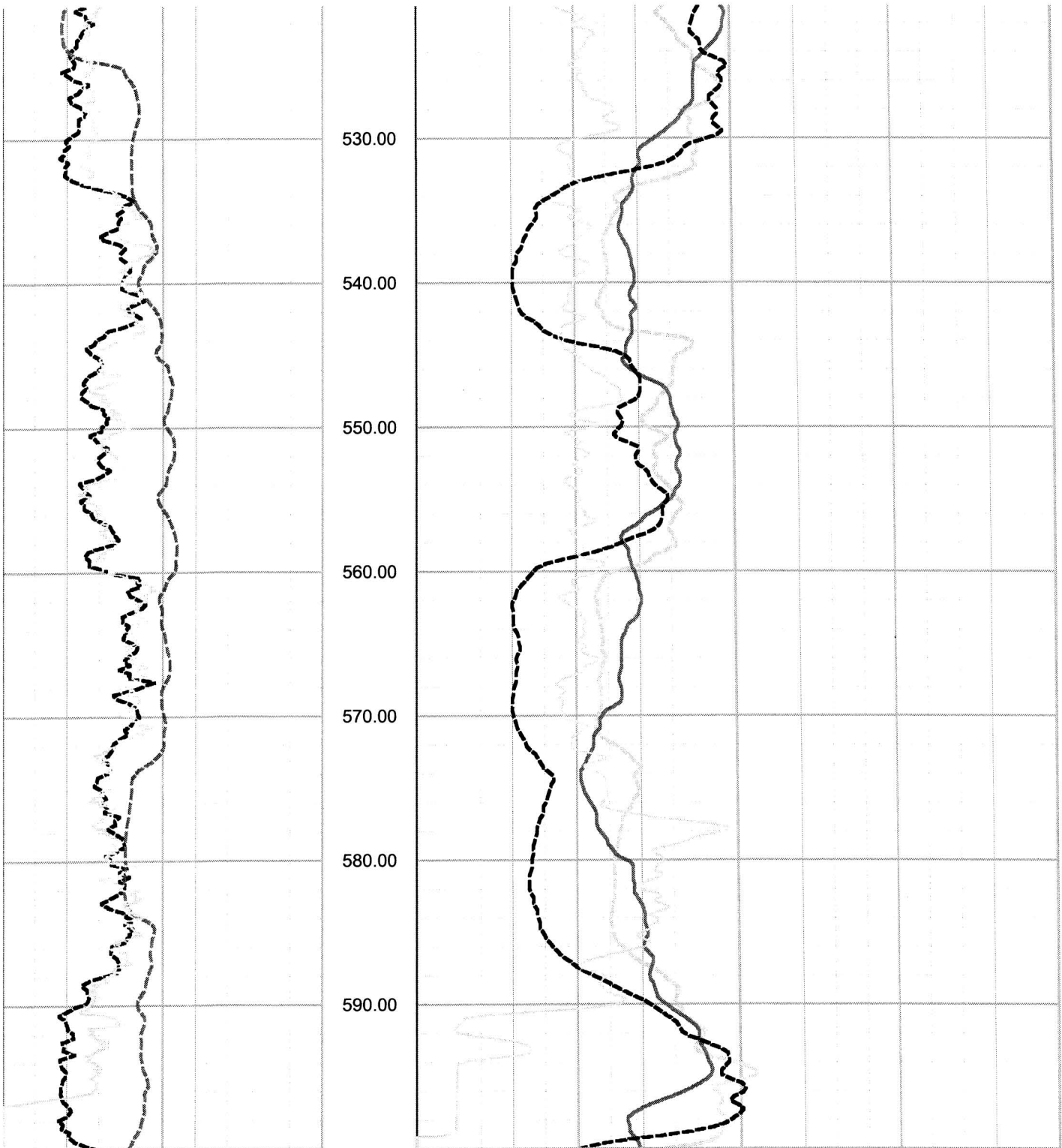




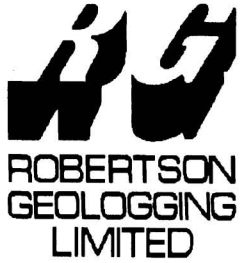
Victoria County COL Boring B-2174A OFFSET ELOG, Caliper and Natural Gamma rev 1 Sheet 6 of 9



Victoria County COL Boring B-2174A OFFSET ELOG, Caliper and Natural Gamma rev 1 Sheet 7 of 9



NGAM API Cs.		Depth (ft)	SPR Ohm	
0.00	100.00		0.00	50.00
SP Millivolt				
-100.00	300.00	0.00	50.00	
CGA1 API Cs.				
0.00	100.00	0.00	50.00	
CGA2 API Cs.				
0.00	100.00	2.00	22.00	
		2.00	22.00	



VICTORIA COUNTY COL

B2176AOFFSET

COMPANY GEOVISION  
 WELL B-2176A OFFSET  
 FIELD  
 COUNTRY  
 STATE  
 COUNTY  
 LAT.:  
 LONG.:

OTHER SERVICES

Perm. Da..	Elev	KB	0.00
Log. Da..		DF	0.00
Drill Datum		GL	0.00

DATE	13 Nov 07	05 Dec 06	05 Dec 06
RUN#	3	0	0
TYPE OF LOG	ELOG		
DEPTH DRILLER	210.00	0.00	0.00
DEPTH LOGGER	210.00	0.00	0.00
LOG DEEPEST	210.00	0.00	0.00
LOG SHALLOW	40.00	0.00	0.00
FLUID IN HOLE	DRILLING MUD		
SALINITY			
DENSITY			
LEVEL			
MAX TEMP °C	0.00	0.00	0.00
RIG TIME			
RECORDED BY	R. STELLER		
WITNESSED BY			

RUN#	BIT RECORD			CASING RECORD			
	SIZE	FROM	TO	SIZE	WEIGHT	FROM	TO
3	5.00	0.00	210.00	0.00	0.00	0.00	0.00
0	0.00	0.00	0.00	0.00	0.00	0.00	0.00
0	0.00	0.00	0.00	0.00	0.00	0.00	0.00

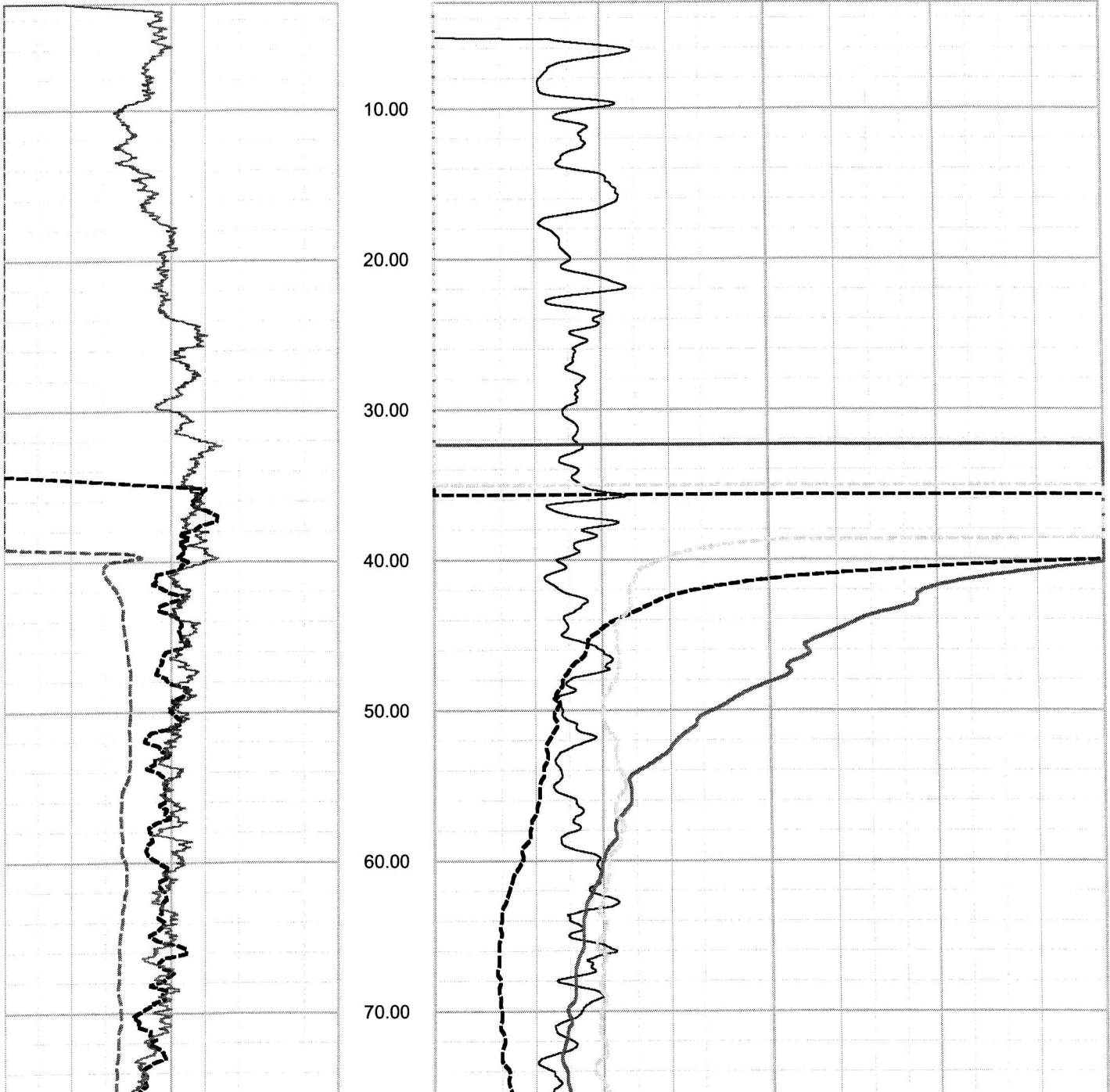
ROBERTSON GEOLOGGING TECHNOLOGY

REMARKS ( C:\Data\Victoria County\B-2176A OFFSET 13 ..

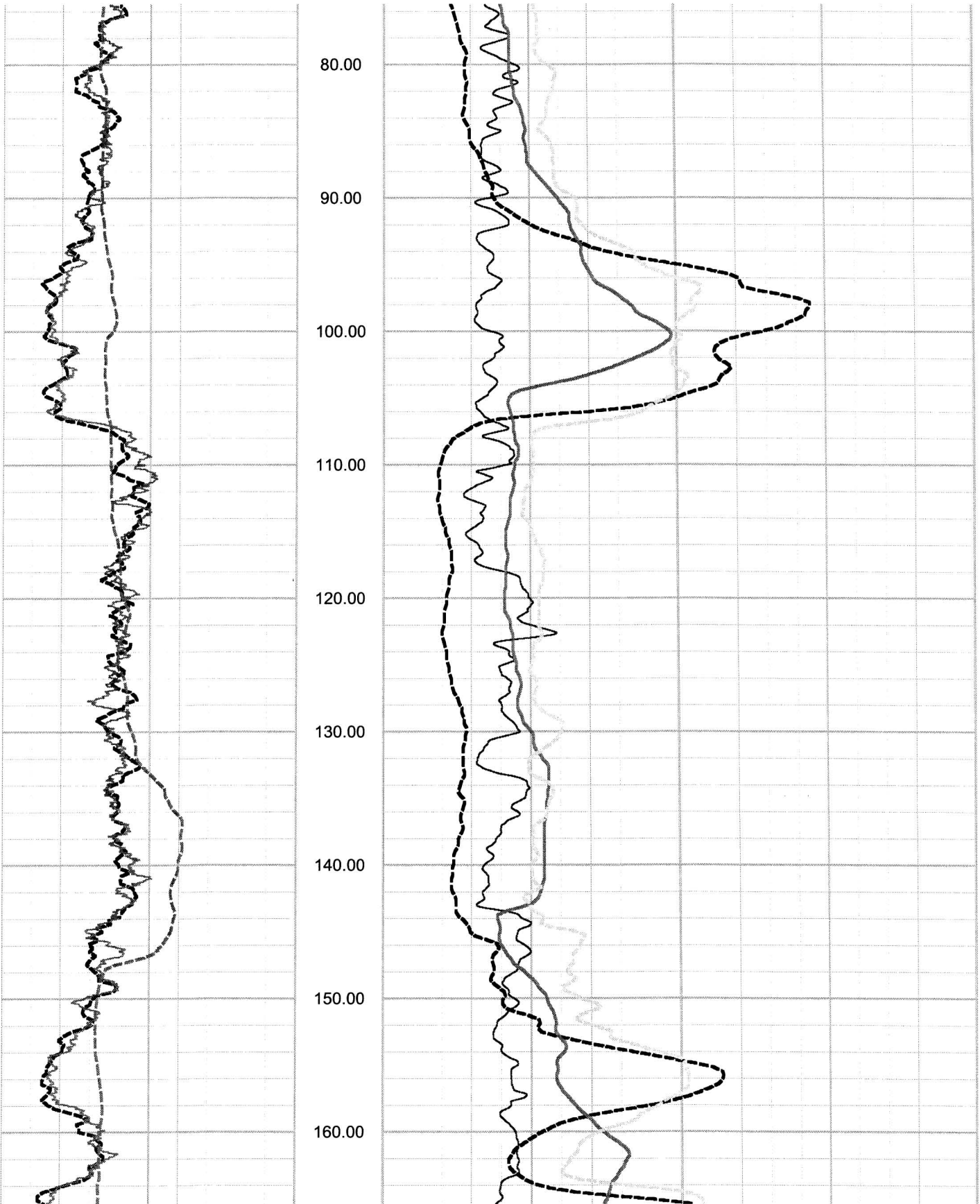
0.00	NGAM API Cs.	100.00
<hr/>		
0.00	SP Millivolt	200.00
<hr/>		
0.00	CGAM API Cs.	100.00

2.00	CALP Inch	22.00
<hr/>		
0.00	SHN Ohm M.	50.00
<hr/>		
0.00	LON Ohm M.	50.00
<hr/>		
0.00	SPR Ohm	50.00

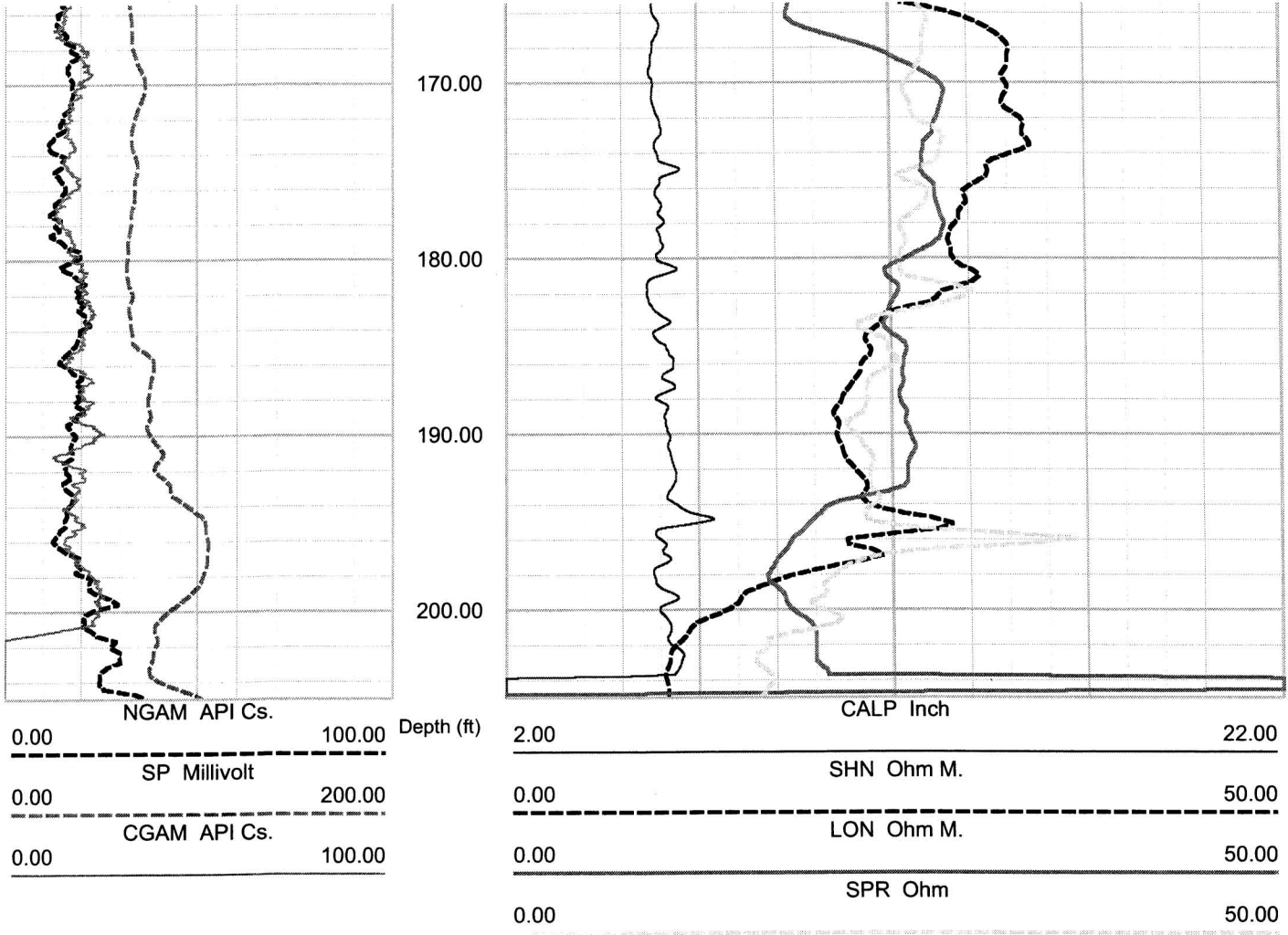
Depth (ft)



Victoria County COL Boring B-2176A OFFSET ELOG, Caliper and Natural Gamma rev 1 Sheet 2 of 4



Victoria County COL Boring B-2176A OFFSET ELOG, Caliper and Natural Gamma rev 1 Sheet 3 of 4

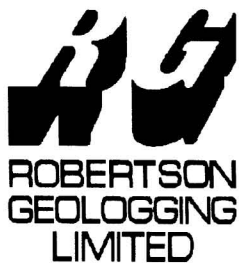




ROBERTSON GEOLOGGING TECHNOLOGY

REMARKS ( C:\Data\Victoria County\B-2182A OFFSET 12 ..

VICTORIA



B2182A OFFSET

COMPANY GEOVISION  
 WELL B-2182A OFFSET  
 FIELD  
 COUNTRY  
 STATE  
 COUNTY  
 LAT.:  
 LONG.:

OTHER SERVICES

Perm. Da..	Elev	KB	0.00
Log. Da..		DF	0.00
Drill Datum		GL	0.00

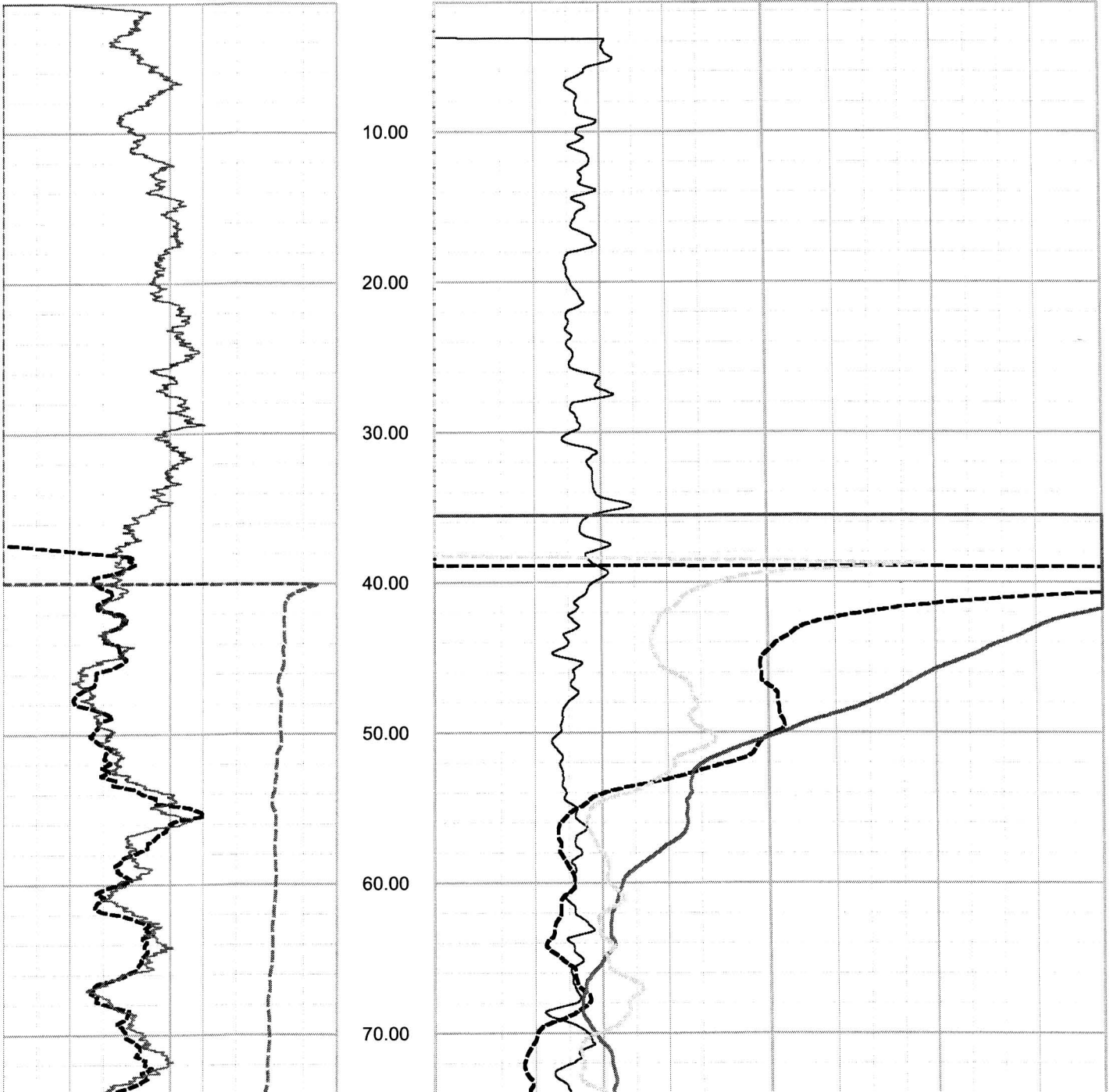
DATE	12 Nov 07	15 Dec 06	15 Dec 06
RUN#	1	0	0
TYPE OF LOG	ELOG		
DEPTH DRILLER	410.00	0.00	0.00
DEPTH LOGGER	410.00	0.00	0.00
LOG DEEPEST	410.00	0.00	0.00
LOG SHALLOW	40.00	0.00	0.00
FLUID IN HOLE	DRILLING MUD		
SALINITY			
DENSITY			
LEVEL			
MAX TEMP °C	0.00	0.00	0.00
RIG TIME			
RECORDED BY	C. CARTER		
WITNESSED BY			

RUN#	BIT RECORD			CASING RECORD			
	SIZE	FROM	TO	SIZE	WEIGHT	FROM	TO
1	5.88	0.00	619.50	4.00	0.00	0.00	88.00
0	0.00	0.00	0.00	0.00	0.00	0.00	0.00
0	0.00	0.00	0.00	0.00	0.00	0.00	0.00

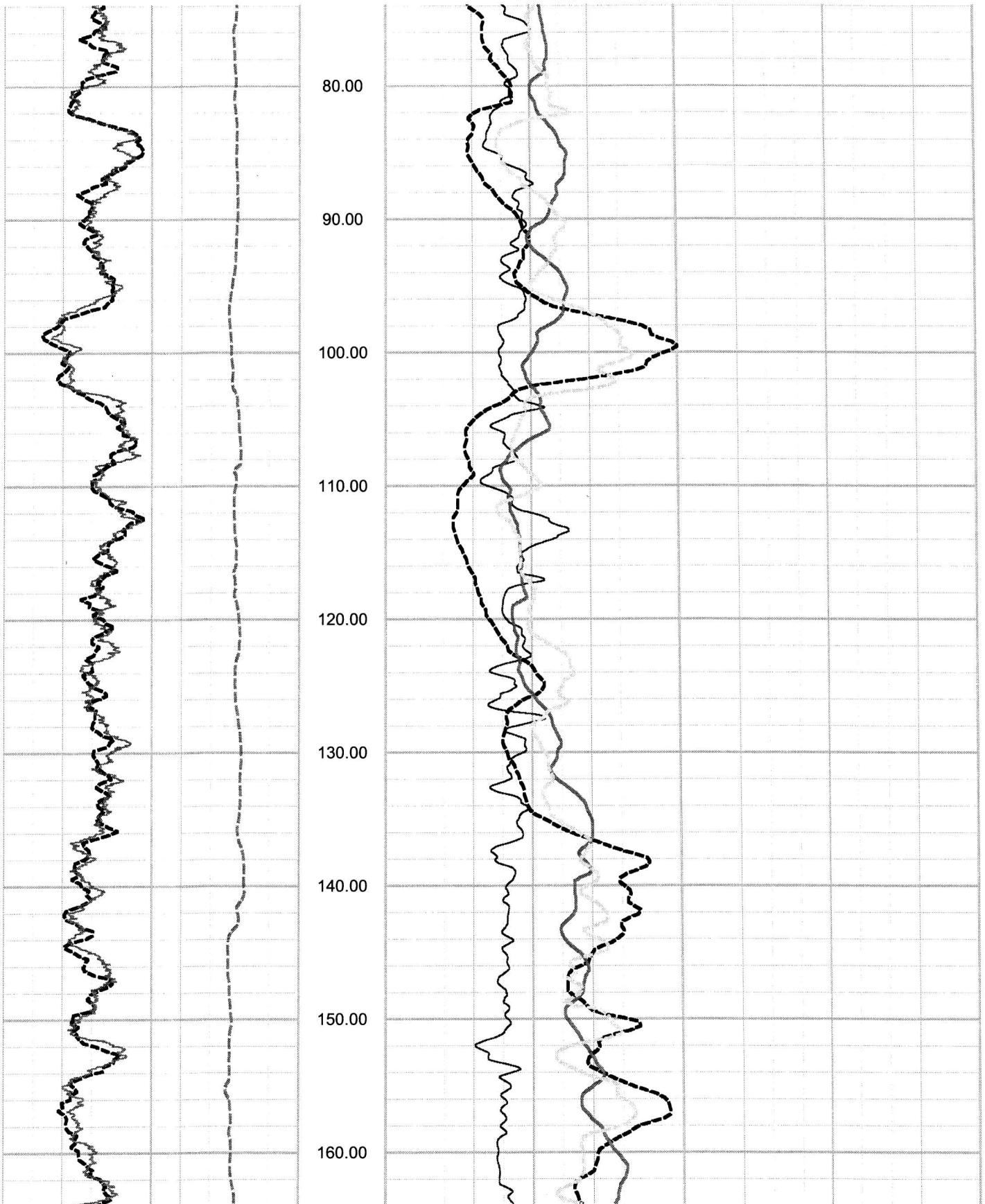
0.00	NGAM API Cs.	100.00
<hr/>		
-100.00	SP Millivolt	250.00
<hr/>		
0.00	CGAM API Cs.	100.00

2.00	CALP Inch	22.00
<hr/>		
0.00	SHN Ohm M.	50.00
<hr/>		
0.00	LON Ohm M.	60.00
<hr/>		
0.00	SPR Ohm	60.00

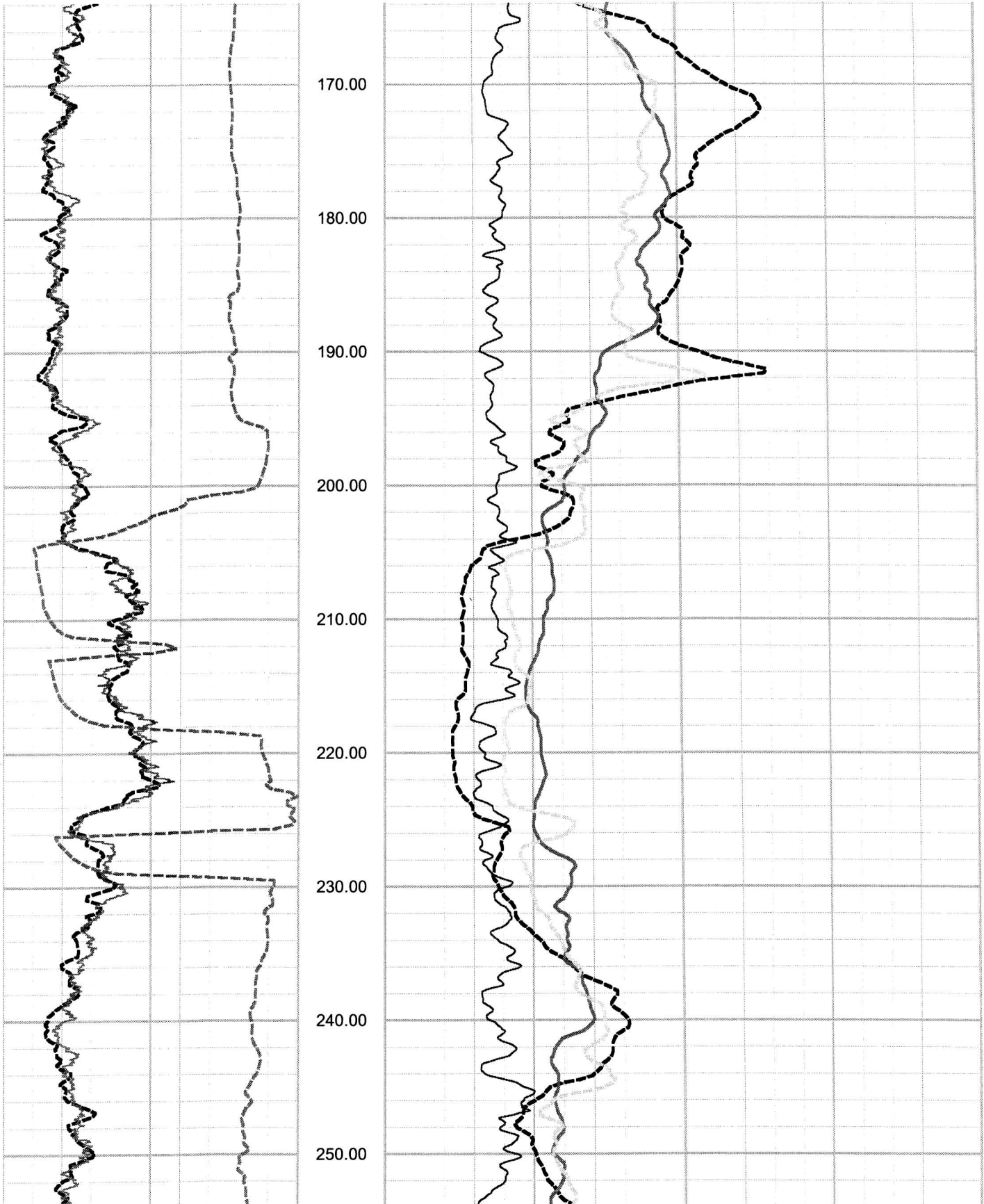
Depth (ft)

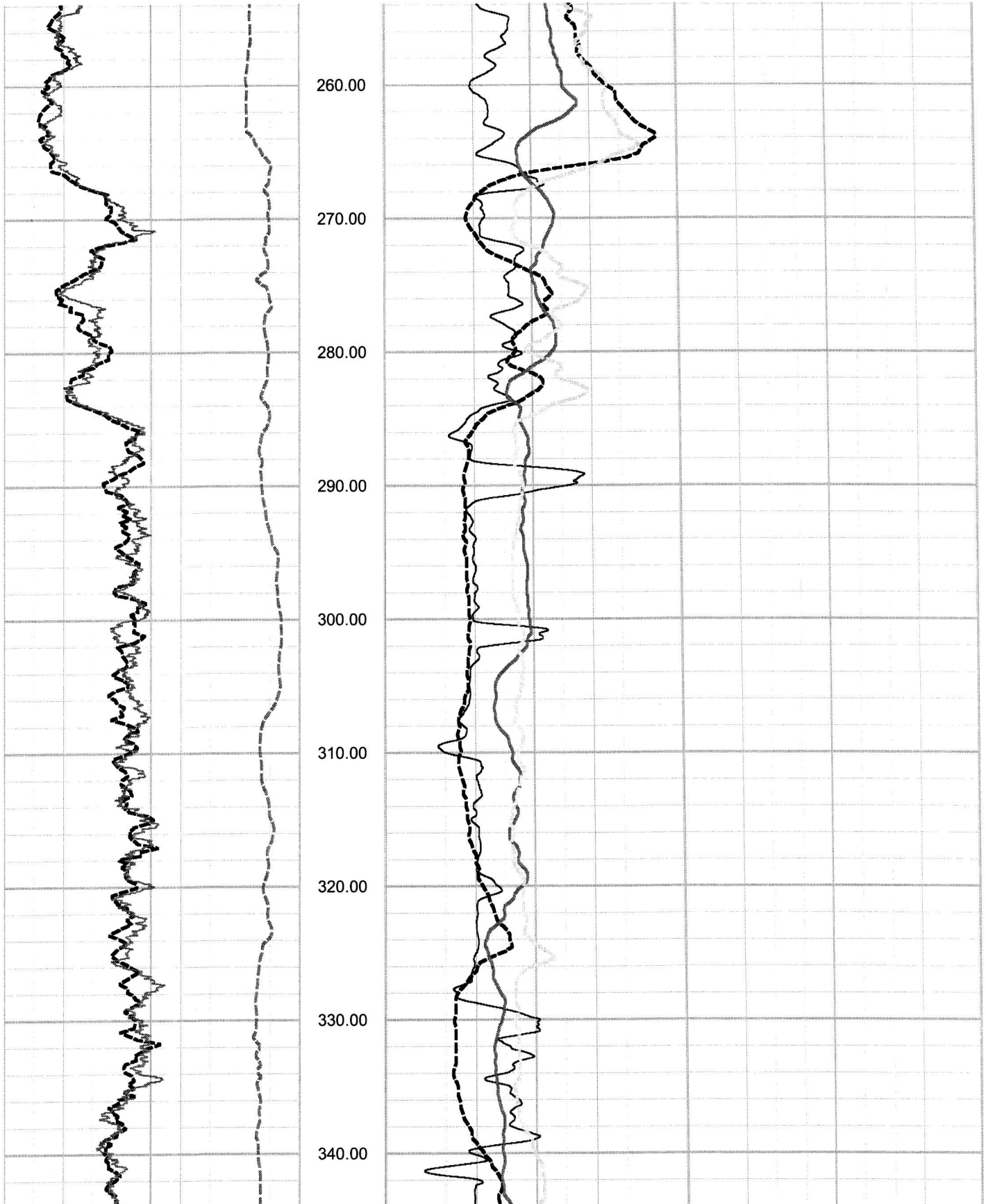


Victoria County COL Boring B-2182A OFFSET ELOG, Caliper and Natural Gamma rev 1 Sheet 2 of 6

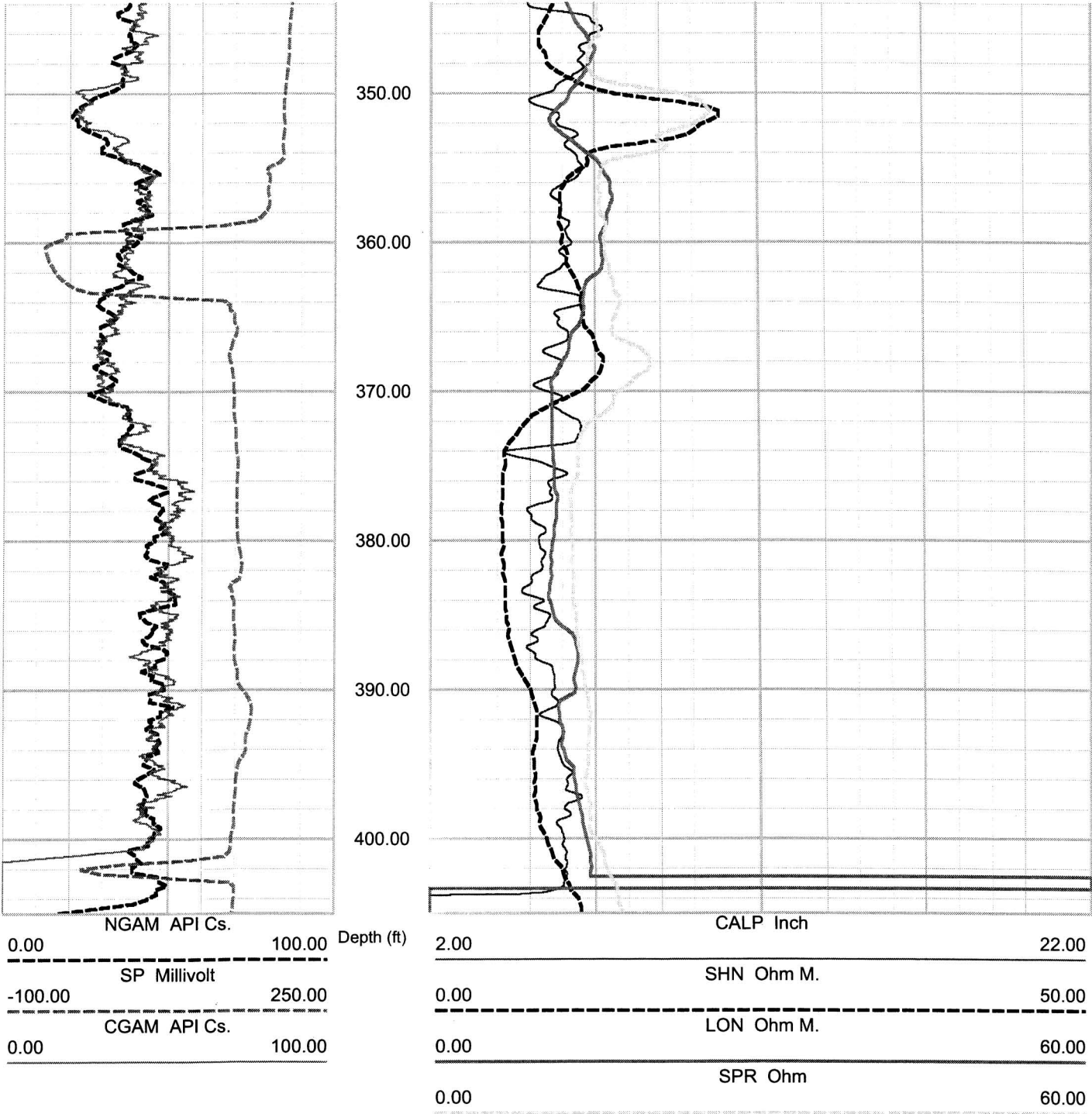


Victoria County COL Boring B-2182A OFFSET ELOG, Caliper and Natural Gamma rev 1 Sheet 3 of 6





Victoria County COL Boring B-2182A OFFSET ELOG, Caliper and Natural Gamma rev 1 Sheet 5 of 6



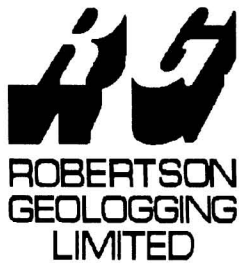
0.00	NGAM API Cs.	100.00
-100.00	SP Millivolt	250.00
0.00	CGAM API Cs.	100.00

Depth (ft)

2.00	CALP Inch	22.00
0.00	SHN Ohm M.	50.00
0.00	LON Ohm M.	60.00
0.00	SPR Ohm	60.00

ROBERTSON GEOLOGGING TECHNOLOGY

REMARKS ( C:\Data\Victoria County\B-2262A OFFSET 13-..



VICTORIA

B2262A OFFSET

COMPANY GEOVISION  
 WELL B-2182A OFFSET  
 FIELD  
 COUNTRY  
 STATE  
 COUNTY  
 LAT.:  
 LONG.:

OTHER SERVICES

Perm. Da..	Elev	KB	0.00
Log. Da..		DF	0.00
Drill Datum		GL	0.00

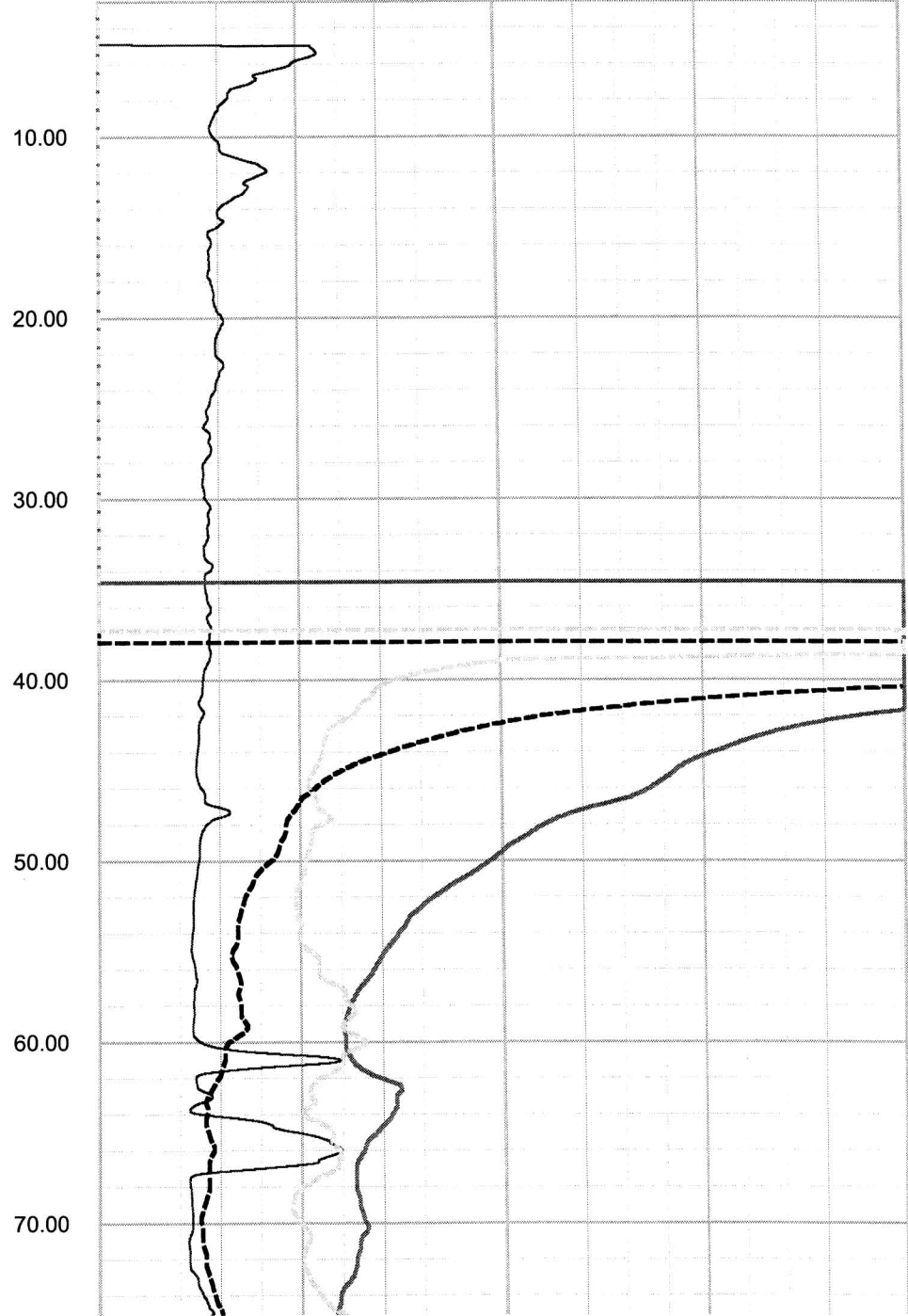
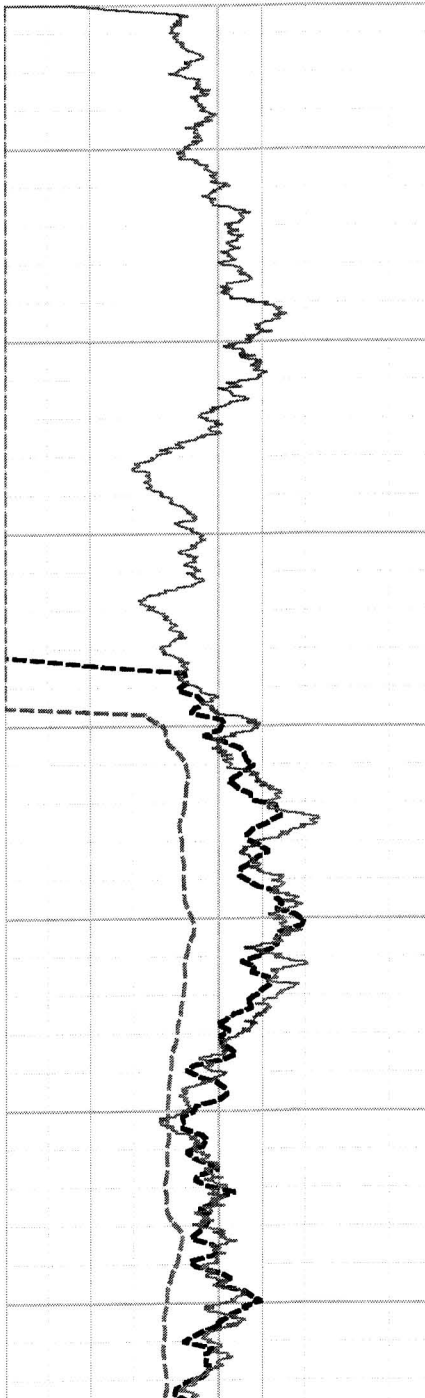
DATE	13 Nov 07	15 Dec 06	15 Dec 06
RUN#	1	0	0
TYPE OF LOG	ELOG		
DEPTH DRILLER	210.00	0.00	0.00
DEPTH LOGGER	210.00	0.00	0.00
LOG DEEPEST	210.00	0.00	0.00
LOG SHALLOW	40.00	0.00	0.00
FLUID IN HOLE	DRILLING MUD		
SALINITY			
DENSITY			
LEVEL			
MAX TEMP °C	0.00	0.00	0.00
RIG TIME			
RECORDED BY	C. CARTER		
WITNESSED BY			

RUN#	BIT RECORD			CASING RECORD			
	SIZE	FROM	TO	SIZE	WEIGHT	FROM	TO
1	5.88	0.00	619.50	4.00	0.00	0.00	88.00
0	0.00	0.00	0.00	0.00	0.00	0.00	0.00
0	0.00	0.00	0.00	0.00	0.00	0.00	0.00

0.00	NGAM API Cs.	100.00
<hr/>		
0.00	SP Millivolt	200.00
<hr/>		
0.00	CGAM API Cs.	100.00

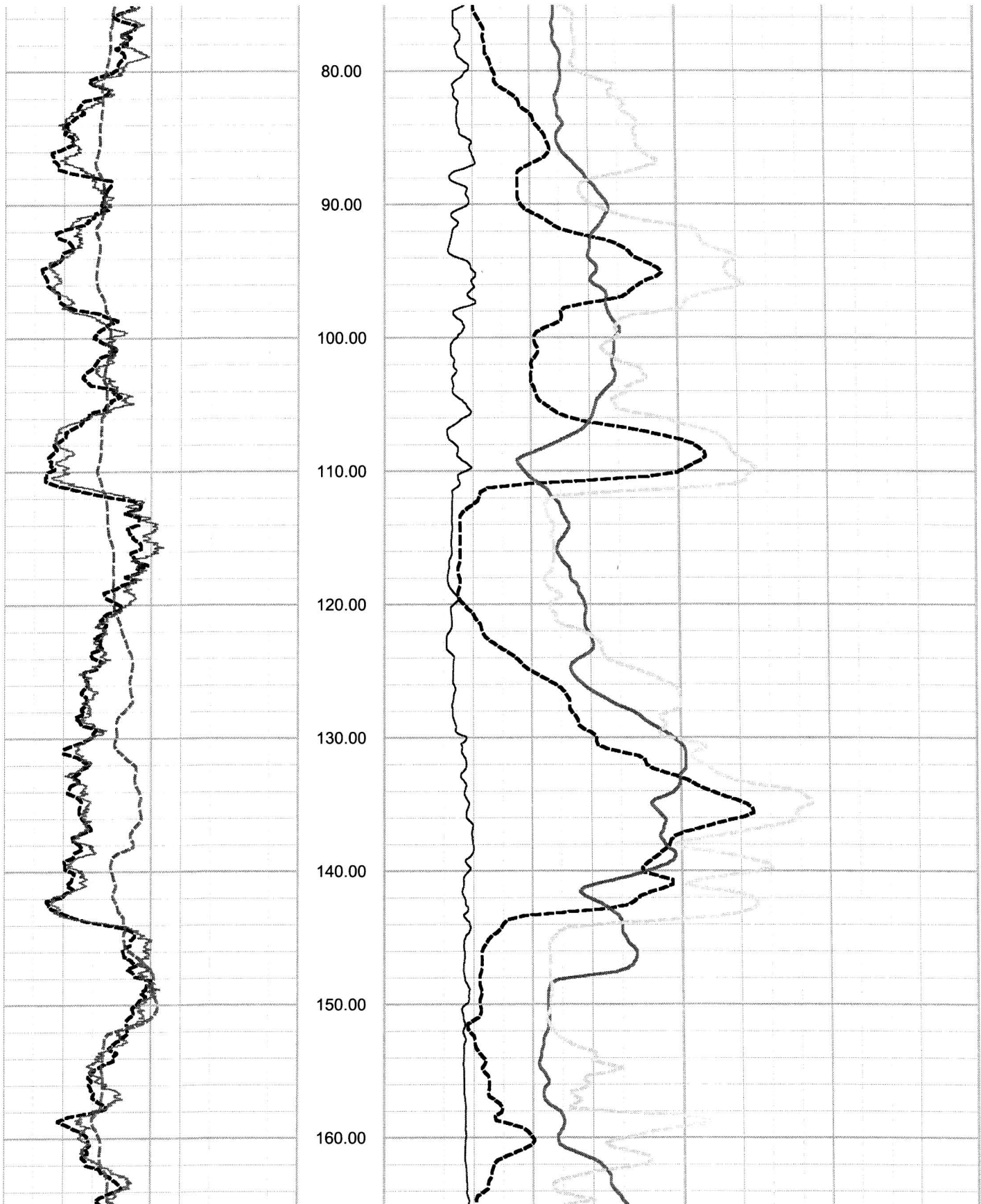
2.00	CALP Inch	22.00
<hr/>		
0.00	SHN Ohm M.	50.00
<hr/>		
0.00	LON Ohm M.	50.00
<hr/>		
0.00	SPR Ohm	50.00

Depth (ft)

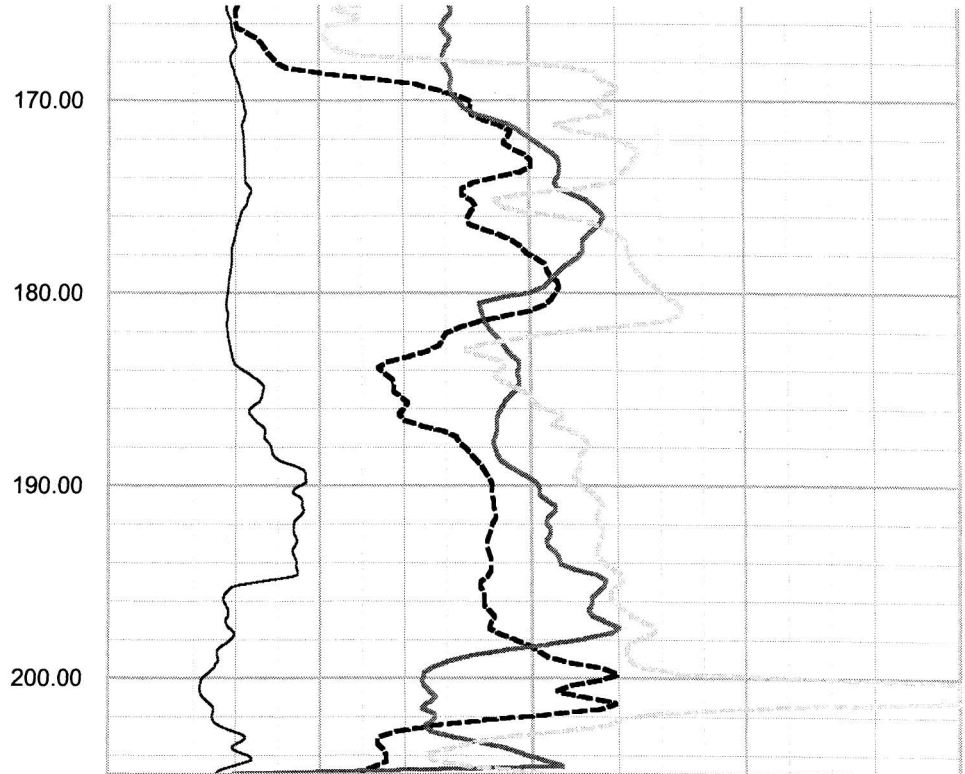
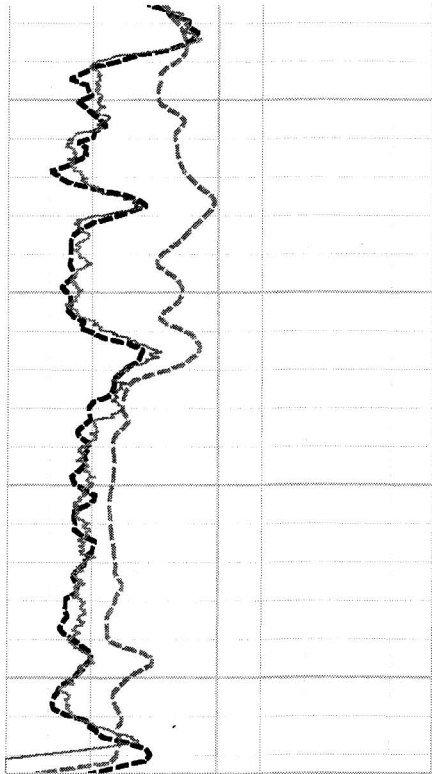


Victoria County COL Boring B-2262A OFFSET ELOG, Caliper and Natural Gamma rev 1 Sheet 2 of 4





Victoria County COL Boring B-2262A OFFSET ELOG, Caliper and Natural Gamma rev 1 Sheet 3 of 4



0.00	NGAM API Cs.	100.00
0.00	SP Millivolt	200.00
0.00	CGAM API Cs.	100.00

2.00	CALP Inch	22.00
0.00	SHN Ohm M.	50.00
0.00	LON Ohm M.	50.00
0.00	SPR Ohm	50.00

ROBERTSON GEOLOGGING TECHNOLOGY

REMARKS ( C:\Data\7501 MACTEC Victoria County\B-227..



VICTORIA

B2274A OFFSET

COMPANY GEOVISION  
 WELL B-2274A OFFSET  
 FIELD  
 COUNTRY  
 STATE  
 COUNTY  
 LAT.:  
 LONG.:

OTHER SERVICES

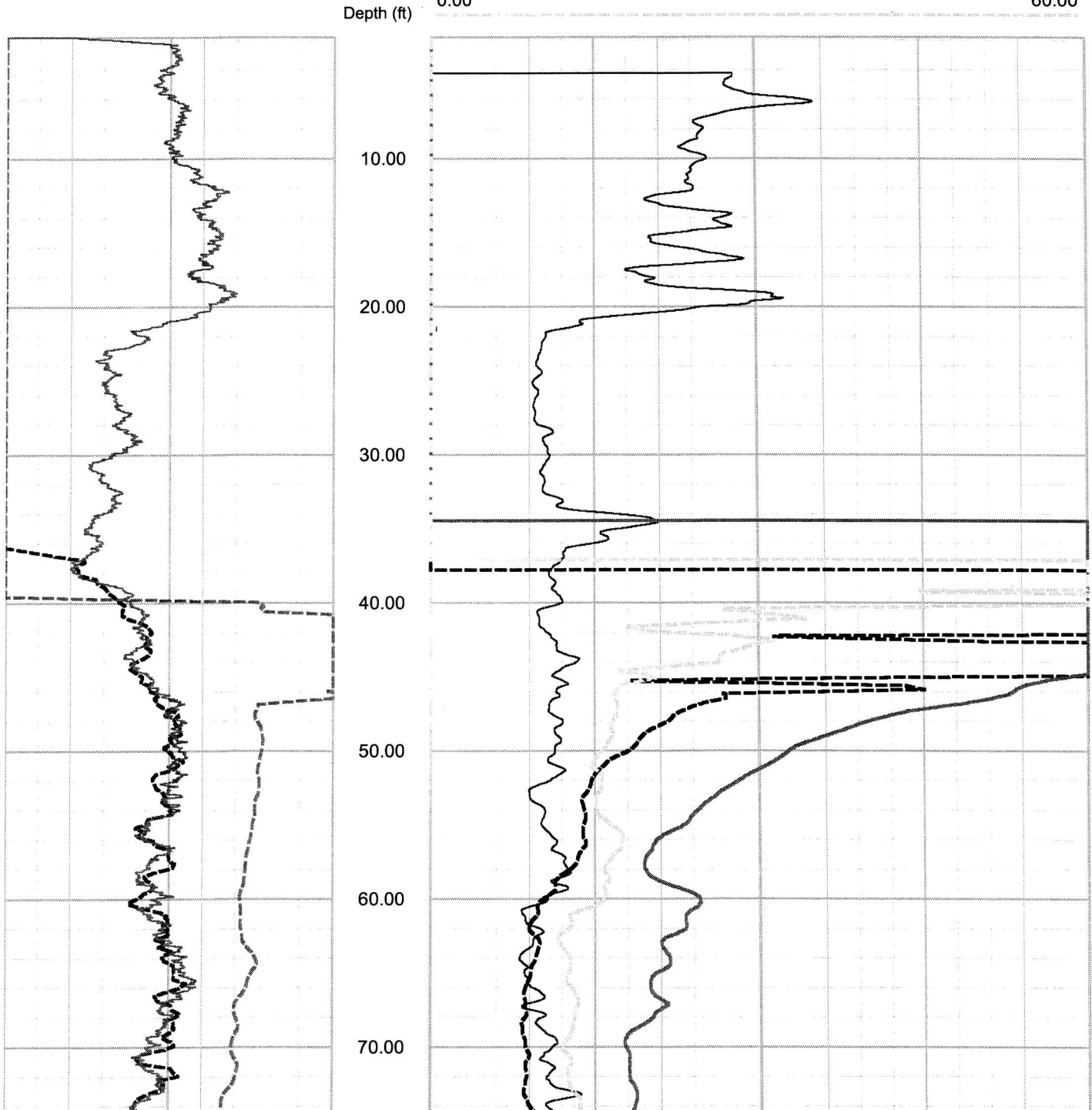
Perm. Da..	Elev	KB	0.00
Log. Da..		DF	0.00
Drill Datum		GL	0.00

DATE	07 Nov 07	15 Dec 06	15 Dec 06
RUN#	3	0	0
TYPE OF LOG	CALIPER		
DEPTH DRILLER	620.00	0.00	0.00
DEPTH LOGGER	615.00	0.00	0.00
LOG DEEPEST	615.00	0.00	0.00
LOG SHALLOW	40.00	0.00	0.00
FLUID IN HOLE	DRILLING MUD		
SALINITY			
DENSITY			
LEVEL			
MAX TEMP °C	0.00	0.00	0.00
RIG TIME			
RECORDED BY	C. CARTER		
WITNESSED BY			

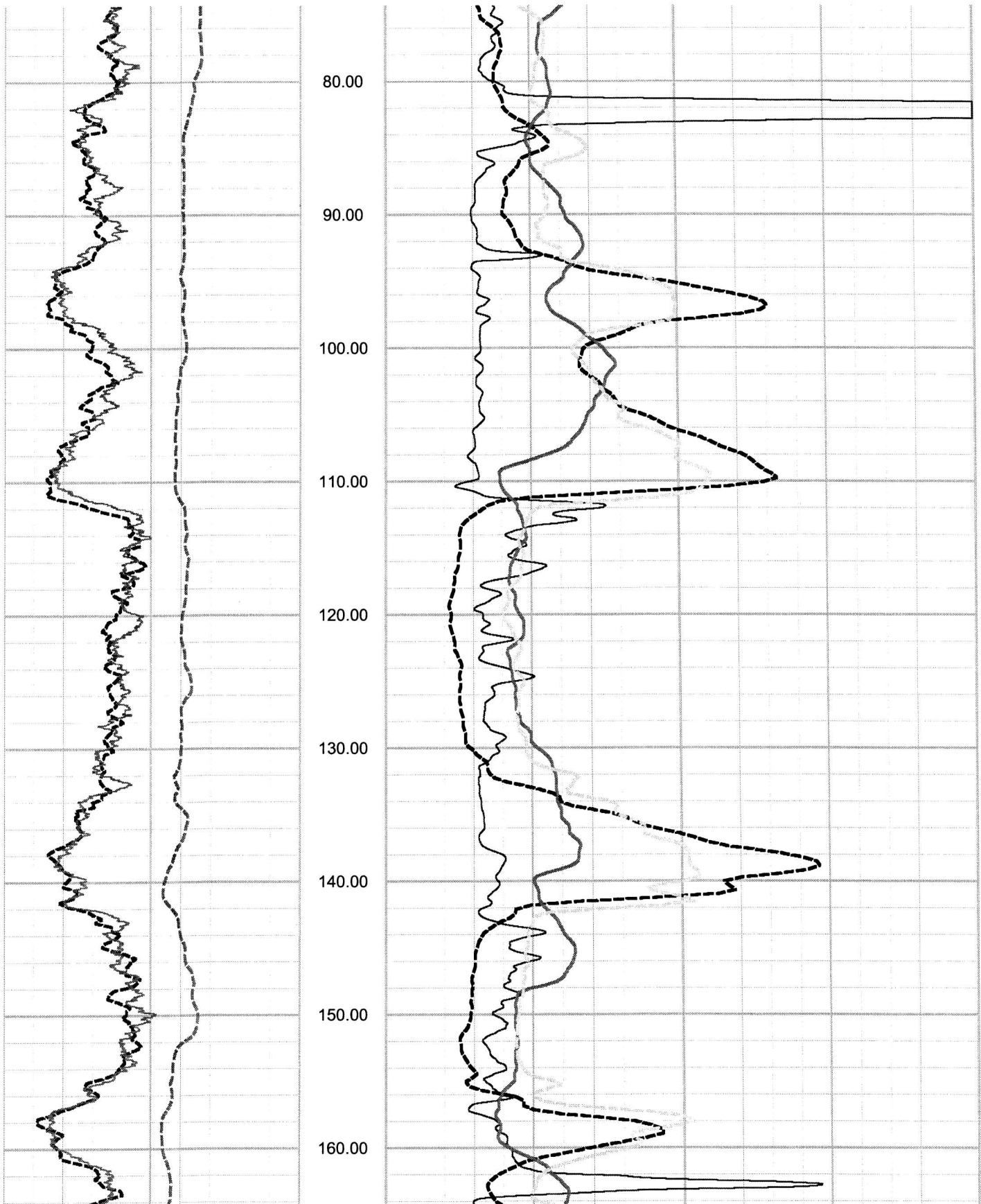
RUN#	BIT RECORD			CASING RECORD			
	SIZE	FROM	TO	SIZE	WEIGHT	FROM	TO
3	5.88	0.00	619.50	4.00	0.00	0.00	88.00
0	0.00	0.00	0.00	0.00	0.00	0.00	0.00
0	0.00	0.00	0.00	0.00	0.00	0.00	0.00

0.00	NGAM API Cs.	100.00
<hr/>		
0.00	SP Millivolt	150.00
<hr/>		
0.00	CGAM API Cs.	100.00

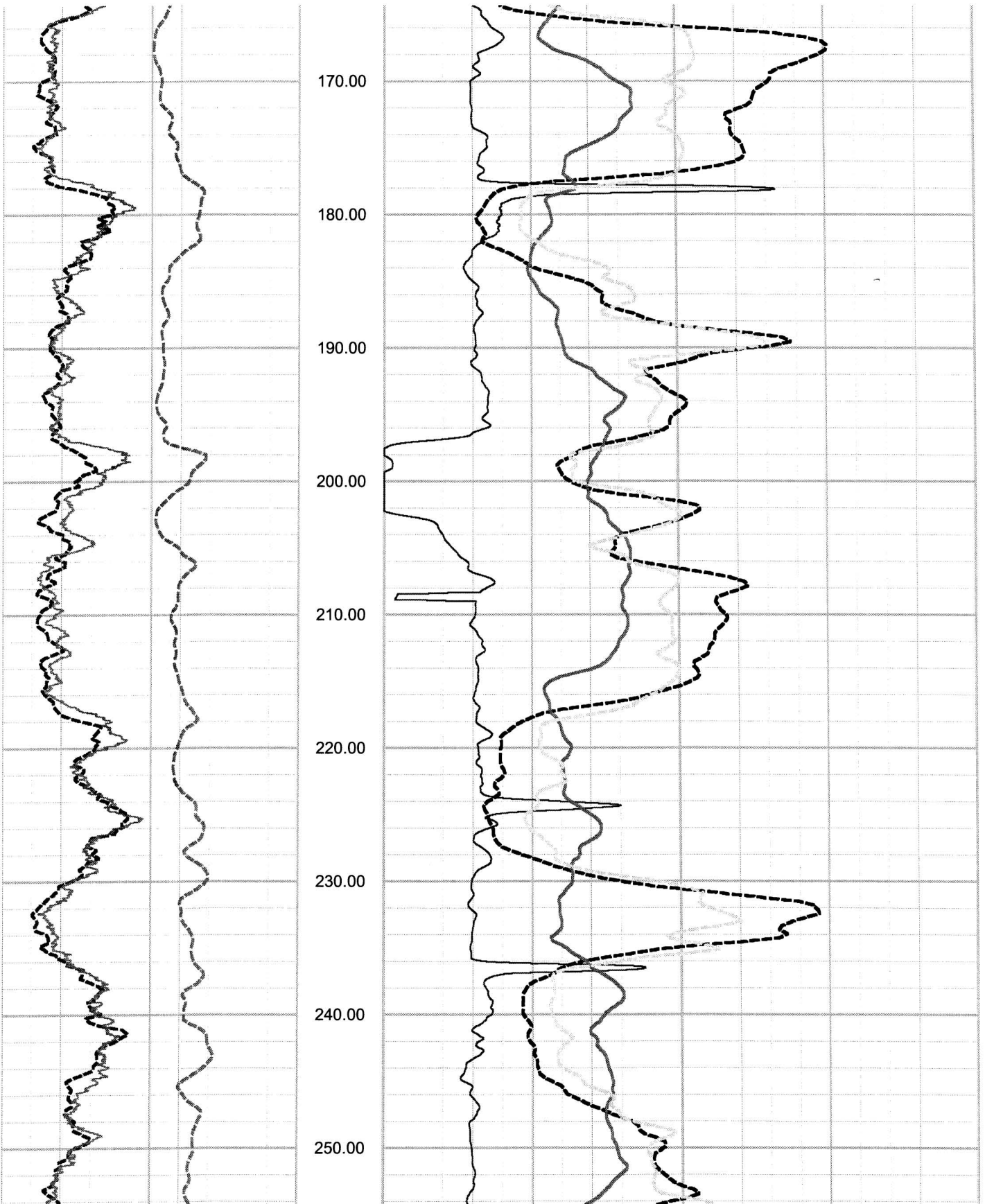
2.00	CALP Inch	22.00
<hr/>		
0.00	SHN Ohm M.	50.00
<hr/>		
0.00	LON Ohm M.	60.00
<hr/>		
0.00	SPR Ohm	60.00



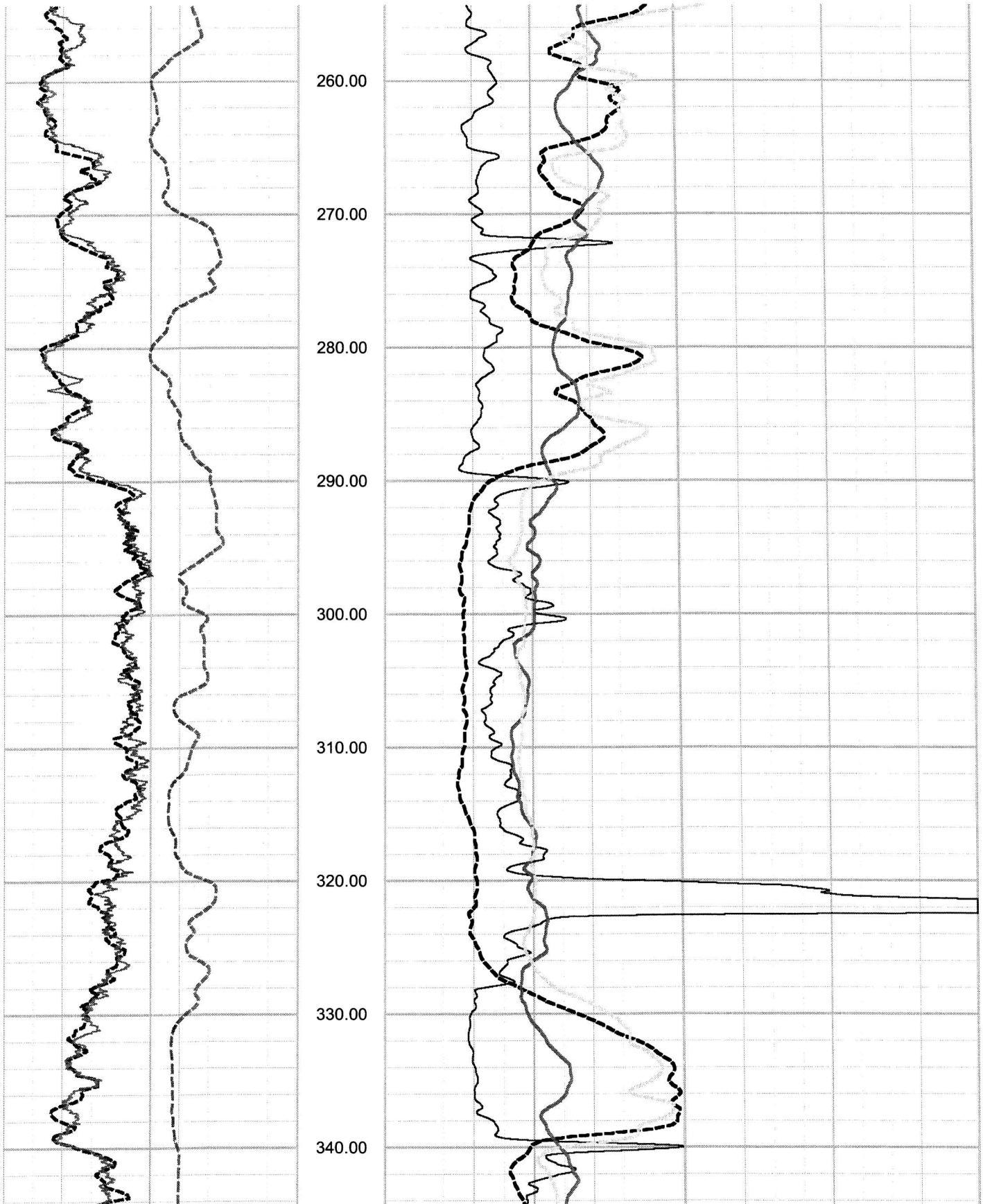
Victoria County COL Boring B-2274A OFFSET ELOG, Caliper and Natural Gamma rev 1 Sheet 2 of 9



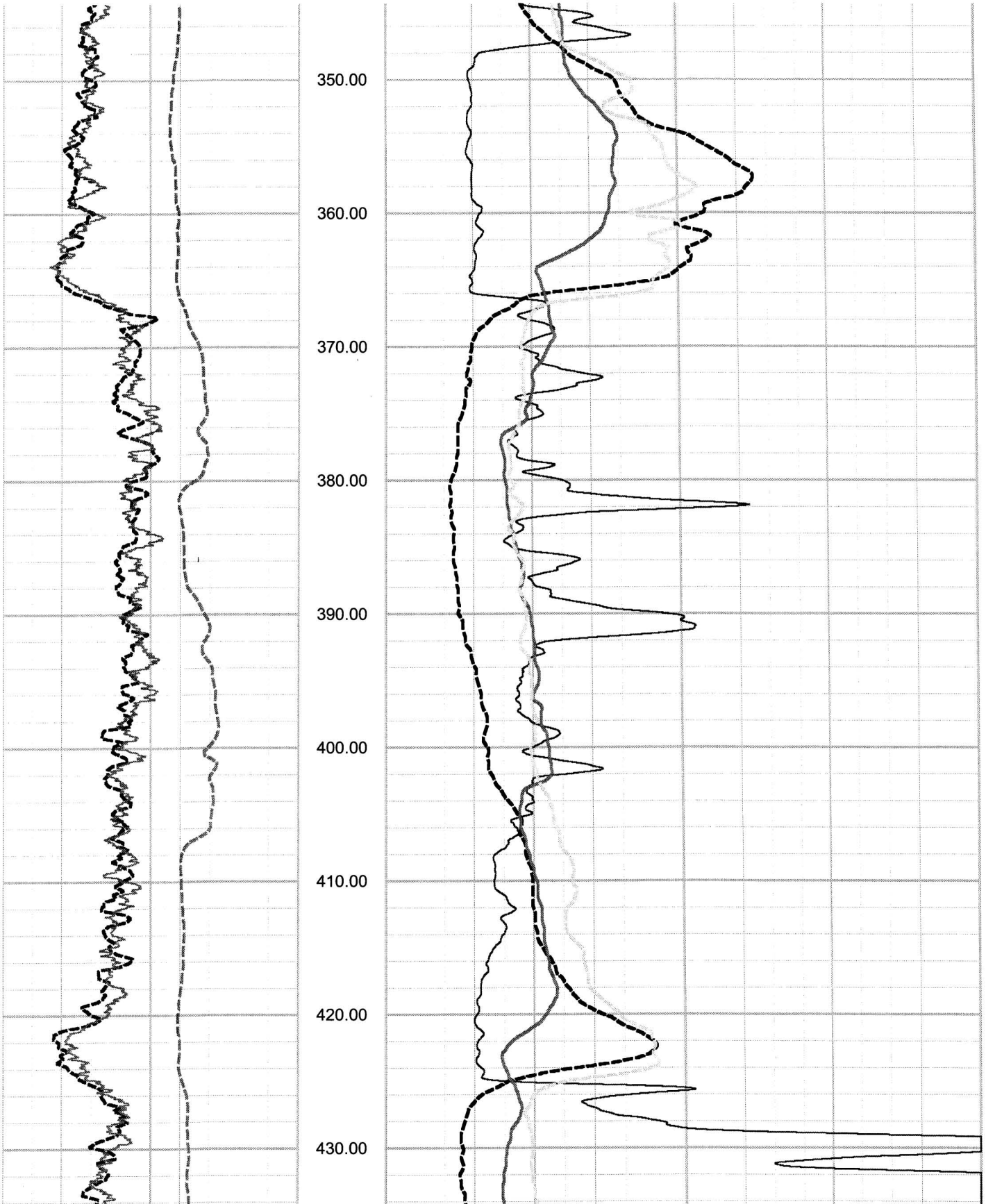
Victoria County COL Boring B-2274A OFFSET ELOG, Caliper and Natural Gamma rev 1 Sheet 3 of 9



Victoria County COL Boring B-2274A OFFSET ELOG, Caliper and Natural Gamma rev 1 Sheet 4 of 9



Victoria County COL Boring B-2274A OFFSET ELOG, Caliper and Natural Gamma rev 1 Sheet 5 of 9



Victoria County COL Boring B-2274A OFFSET ELOG, Caliper and Natural Gamma rev 1 Sheet 6 of 9