

Depth (feet)	V _s (feet/sec)	V _p (feet/sec)	Depth (feet)	V _s (feet/sec)	V _p (feet/sec)	Depth (feet)	V _s (feet/sec)	V _p (feet/sec)
13.0	620	2730	95.1	1570	6180	177.1	1210	5810
14.7	580	2970	96.7	1610	6210	178.7	1220	5730
16.6	570	3640	98.3	1870	6330	180.4	1250	6030
18.0	570	3660	100.0	1930	6330	182.0	1740	6240
19.6	610	3710	101.6	1790	6210	183.6	1510	6490
21.2	690	3520	103.3	1720	6300	185.3	1810	6630
22.9	810	2990	104.9	1590	6270	186.9	2000	7030
24.5	1090	2700	106.5	1430	5890	188.6	2100	7030
26.2	1260	2640	108.2	1330	5970	190.2	2120	7070
27.8	1260	2780	109.8	1100	5680	191.8	2150	7320
29.4	1320	3040	111.5	1060	5940	193.5	1810	6430
31.1	1430	3120	113.1	1010	5970	195.1	1520	6090
32.7	1430	3050	114.7	890	5890	196.8	1380	5920
34.4	1330	3130	116.4	870	5730	198.4	1260	6000
36.0	1310	3330	118.0	850	5810	200.0	1330	5970
37.6	1230	3780	119.7	850	5700	201.7	1300	6030
39.3	1230	4060	121.3	850	5730	203.3	1330	6060
40.9	1230	5130	122.9	870	5730	205.0	1450	6060
42.6	1230	5730	124.6	950	6060	206.6	1390	5890
44.2	1060	5630	126.2	1020	6120	208.2	1410	6000
45.8	970	5390	127.9	1050	6030	209.9	1420	6180
47.5	830	5650	129.5	1120	6210	211.5	1390	6120
49.1	790	5530	131.1	1200	6210	213.2	1310	6060
50.8	770	5650	132.8	1260	6270	214.8	1180	6060
52.4	880	5680	134.4	1330	6300	216.4	1350	6240
54.0	990	5460	136.1	1490	5920	218.1	1430	6390
55.7	1090	5730	137.7	1720	6300	219.7	1610	6770
57.3	1190	5810	139.3	2060	6560	221.4	1590	6990
59.0	1010	5730	141.0	1700	6590	223.0	1610	6730
60.6	840	5730	142.6	1490	6630	224.7	1720	6840
62.2	700	5780	144.3	1390	6270	226.3	1760	6730
63.9	640	5650	145.9	1090	6000	227.9	1950	6960
65.5	570	5390	147.6	1050	5890	229.6	2180	7580
67.2	560	5080	149.2	1050	5940	231.2	2180	8850
68.8	570	5500	150.8	1060	5920	232.9	2240	9170
70.5	590	5500	152.5	1050	5970	234.5	2400	8330
72.1	630	5650	154.1	1020	5920	236.1	2290	7810
73.7	720	5920	155.8	1030	5780	237.8	2180	7230
75.4	880	5920	157.4	1080	5680	239.4	2060	7110
77.0	1120	6180	159.0	1050	5700	241.1	2000	6990
78.7	1200	6430	160.7	1010	5650	242.7	2000	6960
80.3	1110	6000	162.3	920	5530	244.3	1880	6920
81.9	910	5680	164.0	880	5500	246.0	1850	6530
83.6	840	5630	165.6	990	5700	247.6	1920	6630
85.2	860	5750	167.2	1180	5890	249.3	1740	6560
86.9	930	5920	168.9	1290	5920	250.9	1740	6530
88.5	1090	6000	170.5	1280	6030	252.5	1840	6960
90.1	1290	6270	172.2	1300	5890	254.2	1740	6700
91.8	1290	6240	174.1	1350	5890	255.8	1760	6770
93.4	1390	6210	175.4	1350	5750	257.5	1680	6810

Table A-8. Boring B-2274A OFFSET, S - R1 quality assurance analysis P- and S_H-wave data

Depth (feet)	V _s (feet/sec)	V _p (feet/sec)	Depth (feet)	V _s (feet/sec)	V _p (feet/sec)	Depth (feet)	V _s (feet/sec)	V _p (feet/sec)
259.1	1460	6390	342.8	1550	6360	424.8	1590	6210
260.7	1450	6330	344.4	1640	6390	426.4	1390	6030
262.4	1420	6120	346.0	1680	6770	428.1	1170	5830
264.0	1430	6120	347.7	1760	6770	429.7	1110	5480
265.7	1490	6530	349.3	1760	6730	431.3	1110	5410
267.3	1570	6390	351.0	1760	6840	433.0	1160	5410
268.9	1760	6530	352.6	1620	6430	434.6	1220	5550
270.6	1870	6390	354.2	1620	6590	436.3	1290	5650
272.2	1790	6430	355.9	1680	6390	437.9	1310	5650
273.9	1700	6590	357.5	1790	6270	439.5	1320	5630
275.5	1620	6660	359.2	1740	6240	441.2	1380	5550
277.1	1520	6180	360.8	1740	6360	442.8	1380	5650
278.8	1420	6240	362.4	1700	6390	444.5	1310	5730
280.4	1370	6300	364.1	1570	6240	446.1	1310	5780
282.1	1310	6270	365.7	1460	5830	447.7	1310	5730
283.7	1310	6210	367.4	1330	5830	449.4	1290	5700
285.3	1310	6210	369.0	1270	5920	451.0	1290	5680
287.0	1320	6210	370.6	1210	5730	452.7	1290	5730
288.6	1330	5920	372.3	1190	5810	454.3	1330	5750
290.3	1210	5810	373.9	1100	5860	456.0	1340	5730
291.9	1130	5700	375.6	1070	5920	457.6	1350	5600
293.5	1090	5630	377.2	1070	5700	459.2	1350	5630
295.2	1070	5650	378.9	1010	5680	460.9	1350	5630
296.8	1070	5700	380.5	990	5550	462.5	1350	5750
300.1	1070	5730	382.1	950	5550	464.2	1350	5780
301.8	1120	5780	383.8	950	5430	465.8	1350	5890
303.4	1170	5920	385.4	960	5410	467.4	1350	5940
305.0	1220	5890	387.1	990	5460	469.1	1320	5920
306.7	1220	5940	388.7	1010	5410	470.7	1380	5920
308.3	1190	5940	390.3	1070	5300	472.4	1310	5940
310.0	1170	5940	392.0	1090	5500	474.0	1290	5920
311.6	1130	5860	393.6	1140	5630	475.6	1280	5940
313.2	1130	5750	395.3	1240	5650	477.3	1270	5860
314.9	1180	6000	396.9	1240	5780	478.9	1340	5940
316.5	1240	5830	398.5	1240	5750	480.6	1350	5970
318.2	1250	5810	400.2	1300	5830	482.2	1360	6000
319.8	1250	5750	401.8	1380	5970	483.8	1390	5920
321.4	1200	5730	403.5	1410	6060	485.5	1410	5830
323.1	1130	5730	405.1	1550	6180	487.1	1420	5920
324.7	1210	5830	406.7	1660	6210	488.8	1420	5830
326.4	1380	6060	408.4	1700	6330	490.4	1430	5940
328.0	1490	6180	410.0	1810	6530	492.0	1430	5940
329.6	1660	6430	411.7	1830	6490	493.7	1430	5920
331.3	1700	6430	413.3	1850	6530	495.3	1380	5970
332.9	1760	6490	414.9	1930	6460	497.0	1410	6090
334.6	1740	6490	416.6	1900	6920	498.6	1480	6030
336.2	1680	6390	418.2	1900	6770	500.2	1620	6590
337.8	1620	6240	419.9	1900	6840	501.9	1900	6730
339.5	1610	6240	421.5	1870	6630	503.5	2120	6770
341.1	1550	6240	423.1	1810	6660	505.2	2150	6810

Table A-8, continued. Boring B-2274A OFFSET, S - R1 quality assurance analysis P- and S_H-wave data

Depth (feet)	V _s (feet/sec)	V _p (feet/sec)	Depth (feet)	V _s (feet/sec)	V _p (feet/sec)
506.8	1950	6730	588.8	2060	7280
508.4	1760	6530	590.5	2060	7230
510.1	1780	6460	592.1	2060	7230
511.7	1790	6430	593.7	2000	7150
513.4	1810	6390	595.4	2000	6990
515.0	1780	6360	597.0	1950	6700
516.6	1790	6530	598.7	1930	6590
518.3	1810	6560	600.3	1900	6460
519.9	1810	6360	601.9	1810	6490
521.6	1830	6430	603.6	1720	6300
523.2	1850	6300	605.2	1620	6300
524.8	1830	6300			
526.5	1810	6330			
528.1	1760	6270			
529.8	1620	6210			
531.4	1590	6240			
533.1	1570	6300			
534.7	1740	6590			
536.3	1900	6660			
538.0	1930	6840			
539.6	1950	6700			
541.3	1950	6810			
542.9	1900	6810			
544.5	1850	6590			
546.2	1810	6530			
547.8	1810	6330			
549.5	1680	6270			
551.1	1640	6270			
552.7	1550	6030			
554.4	1480	6000			
556.0	1410	5940			
557.7	1430	6000			
559.3	1510	6270			
560.9	1570	6300			
562.6	1740	6430			
564.2	1790	6560			
565.9	1720	6490			
567.5	1660	6560			
569.1	1660	6630			
570.8	1660	6560			
572.4	1660	6630			
574.1	1700	6560			
575.7	1760	6660			
577.3	1870	6660			
579.0	1870	6660			
580.6	1900	6560			
582.3	2030	6960			
583.9	2060	7150			
585.5	2060	7190			
587.2	2060	7280			

Table A-8, continued. Boring B-2274A OFFSET, S - R1 quality assurance analysis P- and S_H-wave data

VICTORIA COUNTY COL BORING B-2276A OFFSET Source to Receiver and Receiver to Receiver Analysis

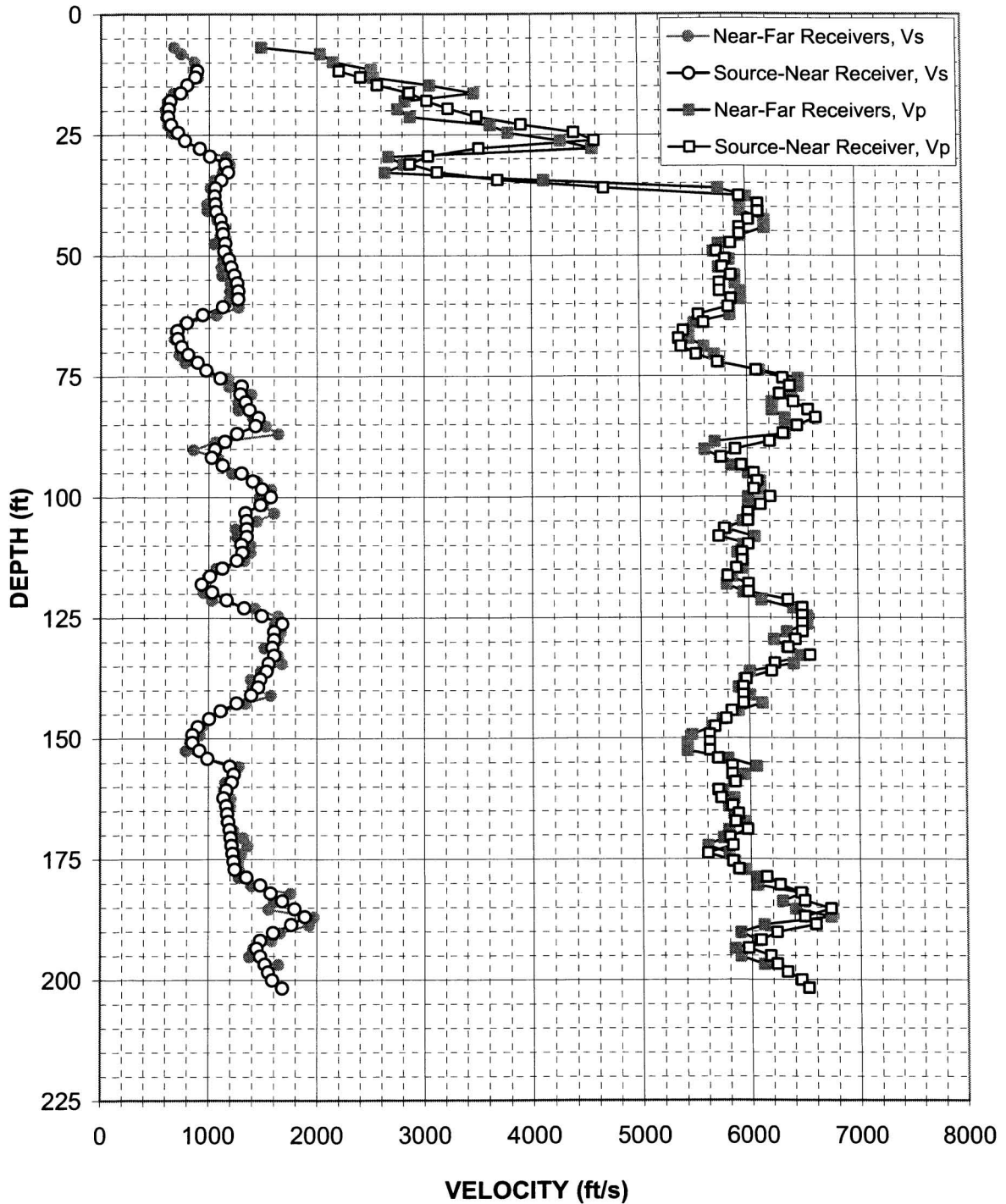


Figure A-9. Boring B-2276A OFFSET, R1 - R2 high resolution analysis
and S - R1 quality assurance analysis P- and S_H-wave data

Depth (feet)	V _s (feet/sec)	V _p (feet/sec)	Depth (feet)	V _s (feet/sec)	V _p (feet/sec)	Depth (feet)	V _s (feet/sec)	V _p (feet/sec)
11.7	890	2210	93.4	1130	5940	175.4	1230	5830
13.0	870	2410	95.1	1300	6060	177.1	1240	5890
14.7	790	2560	96.7	1400	6090	178.7	1350	6150
16.3	730	2860	98.3	1490	6060	180.4	1480	6270
18.0	640	3030	100.0	1570	6210	182.0	1570	6460
19.6	620	3230	101.6	1480	6120	183.6	1680	6490
21.2	620	3500	103.3	1340	6000	185.3	1790	6730
22.9	640	3910	104.9	1350	6000	186.9	1890	6490
24.5	710	4400	106.5	1350	5780	188.6	1760	6590
26.2	770	4590	108.2	1350	5730	190.2	1590	6240
27.8	910	3520	109.8	1300	6000	191.8	1480	6090
29.4	1010	3040	111.5	1310	5940	193.5	1440	5970
31.1	1150	2870	113.1	1260	5940	195.1	1480	6180
32.7	1170	3130	114.7	1130	5890	196.8	1520	6240
34.4	1110	3690	116.4	1010	5810	198.4	1550	6330
36.0	1060	4670	118.0	940	6000	200.0	1590	6460
37.6	1050	5940	119.7	1030	6000	201.7	1680	6530
39.3	1060	6120	121.3	1170	6360			
40.9	1060	6120	122.9	1330	6490			
42.6	1100	6030	124.6	1490	6490			
44.2	1120	5940	126.2	1680	6490			
45.5	1130	5940	127.9	1600	6490			
47.5	1150	5860	129.5	1600	6430			
49.1	1140	5730	131.1	1590	6360			
50.8	1180	5810	132.8	1600	6560			
52.4	1200	5780	134.4	1550	6240			
54.0	1230	5860	136.1	1530	6210			
55.7	1260	5750	137.7	1480	5970			
57.3	1270	5750	139.3	1460	5940			
59.0	1270	5860	141.0	1390	5940			
60.6	1130	5830	142.6	1260	5940			
62.2	940	5550	144.3	1110	5830			
63.9	790	5600	145.9	1010	5780			
65.5	700	5410	147.6	900	5680			
67.2	710	5360	149.2	850	5630			
68.8	740	5390	150.8	850	5630			
70.5	800	5530	152.5	920	5630			
72.1	890	5730	154.1	990	5700			
73.7	970	6090	155.8	1200	5830			
75.4	1100	6330	157.4	1230	5830			
77.0	1300	6390	159.0	1210	5860			
78.7	1290	6300	160.7	1170	5700			
80.3	1340	6430	162.3	1140	5730			
81.9	1370	6560	164.0	1170	5830			
83.6	1460	6630	165.6	1170	5890			
85.2	1430	6460	167.2	1180	5860			
86.9	1260	6330	168.9	1200	5970			
88.5	1150	6210	170.5	1210	5810			
90.1	1060	5890	172.2	1210	5830			
91.8	1030	5750	173.8	1220	5600			

Table A-9. Boring B-2276A OFFSET, S - R1 quality assurance analysis P- and S_H-wave data

VICTORIA COUNTY COL BORING B-2282A OFFSET Source to Receiver and Receiver to Receiver Analysis

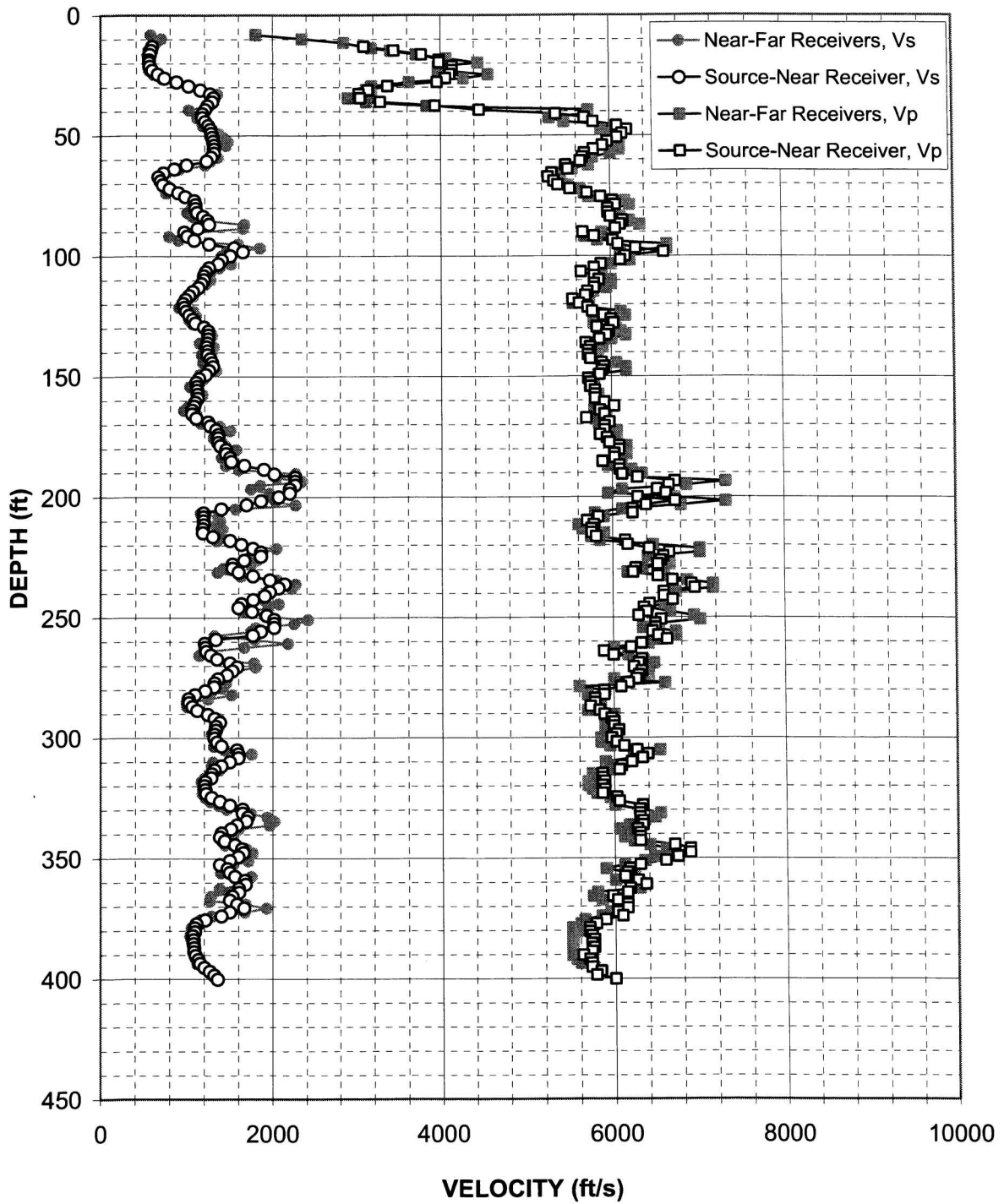


Figure A-10. Boring B-2282A OFFSET, R1 - R2 high resolution analysis
and S - R1 quality assurance analysis P- and S_H-wave data

Depth (feet)	V _s (feet/sec)	V _p (feet/sec)	Depth (feet)	V _s (feet/sec)	V _p (feet/sec)	Depth (feet)	V _s (feet/sec)	V _p (feet/sec)
13.0	590	3090	95.1	1250	6090	177.4	1360	5970
14.7	570	3440	96.7	1550	6300	178.7	1380	6090
16.3	560	3770	98.3	1650	6630	180.4	1450	6090
18.6	550	3980	100.0	1500	6180	182.0	1450	6030
19.6	550	3980	101.6	1400	6120	183.6	1500	6030
21.2	560	4140	103.3	1360	5890	185.3	1510	5890
22.9	590	4140	104.9	1250	5810	186.9	1670	6090
24.5	650	4110	106.5	1210	5650	188.6	1900	6090
26.2	730	4060	108.2	1190	5810	190.5	2020	6120
27.8	870	3960	109.8	1190	5860	191.8	2260	6300
29.4	1010	3370	111.5	1160	5810	193.5	2260	6730
31.1	1150	3130	113.1	1130	5810	195.1	2260	6660
32.7	1260	3030	114.7	1060	5730	196.8	2200	6530
34.4	1300	3040	116.4	1020	5700	198.4	2200	6630
36.0	1290	3280	118.0	980	5550	200.0	2070	6300
37.6	1230	3930	119.7	950	5630	201.7	1860	6730
39.3	1200	4460	121.3	960	5730	203.3	1690	6390
40.9	1170	5360	122.9	980	5780	205.0	1400	6240
42.6	1170	5700	124.6	1020	5920	206.6	1190	6240
44.2	1200	5810	126.2	1060	6000	208.2	1190	5830
45.8	1240	6090	127.9	1090	6030	209.9	1190	5700
47.5	1270	6210	129.5	1190	5830	211.5	1190	5780
49.1	1280	6150	131.1	1240	5970	213.2	1180	5750
50.8	1290	6090	132.8	1240	5940	214.8	1180	5750
52.4	1300	5970	134.4	1240	5860	216.4	1300	5810
54.0	1310	5920	136.1	1230	5700	218.1	1500	6150
55.7	1310	5810	137.7	1220	5750	219.7	1630	6180
57.3	1310	5700	139.3	1230	5730	221.4	1770	6430
59.0	1270	5680	141.0	1230	5730	223.0	1860	6660
60.6	1220	5650	142.6	1270	5750	224.7	1860	6590
62.2	990	5480	144.3	1290	5890	226.3	1670	6560
63.9	850	5500	145.9	1300	5920	227.9	1530	6530
65.5	720	5320	147.6	1250	5890	229.6	1530	6270
67.2	660	5280	149.2	1210	5860	231.2	1600	6240
68.8	690	5340	150.8	1130	5730	232.9	1770	6530
70.5	710	5390	152.5	1100	5750	234.5	1970	6700
72.1	790	5530	154.1	1110	5750	236.1	2140	6920
73.7	890	5730	155.8	1110	5810	237.8	2070	6960
75.4	970	5890	157.4	1120	5810	239.4	1970	6590
77.0	1080	6030	159.0	1120	5810	241.1	1910	6590
78.7	1090	6060	160.7	1090	5920	242.7	1770	6700
80.3	1090	5970	162.3	1080	6030	244.3	1630	6430
81.9	1110	5970	164.0	1060	5860	246.0	1600	6360
83.6	1180	6000	165.6	1060	5920	247.6	1760	6390
85.2	1230	6150	167.2	1100	5700	249.3	1930	6300
86.9	1250	6120	168.9	1240	5970	250.9	2020	6560
88.5	1120	6060	170.5	1270	5920	252.5	2020	6490
90.1	960	5680	172.2	1330	5920	254.2	2020	6490
91.8	1000	5810	174.1	1360	5860	255.8	1860	6460
93.4	1080	6030	175.4	1360	5940	257.5	1770	6530

Table A-10. Boring B-2282A OFFSET, S - R1 quality assurance analysis P- and S_H-wave data

Depth (feet)	V _s (feet/sec)	V _p (feet/sec)	Depth (feet)	V _s (feet/sec)	V _p (feet/sec)
259.1	1340	6630	341.1	1380	6300
260.7	1200	6330	342.8	1440	6300
262.4	1210	6210	344.4	1560	6700
264.0	1220	5890	346.0	1640	6880
265.7	1280	6000	347.7	1660	6880
267.3	1350	6330	349.3	1600	6730
268.9	1500	6300	351.0	1500	6590
270.6	1580	6240	352.6	1380	6300
272.2	1530	6330	354.2	1470	6180
273.9	1470	6300	355.9	1500	6150
275.5	1360	6270	357.5	1560	6120
277.1	1320	6180	359.2	1670	6270
278.8	1310	6090	360.8	1680	6360
280.4	1210	5890	362.4	1600	6180
282.1	1090	5890	364.1	1610	6150
283.7	1020	5780	365.7	1530	5970
285.3	1020	5780	367.4	1500	6030
287.0	1060	5730	369.0	1580	6150
288.6	1120	5830	370.6	1670	6150
290.3	1240	5890	372.3	1500	6030
291.9	1320	5970	373.9	1400	6090
293.5	1380	6000	375.6	1210	5890
295.2	1340	6000	377.2	1110	5780
296.8	1340	6060	378.9	1090	5700
298.5	1320	6030	380.5	1090	5700
300.1	1320	5970	382.1	1070	5730
301.8	1350	6030	383.8	1080	5750
303.4	1400	6120	385.4	1080	5730
305.0	1580	6270	387.1	1080	5750
306.7	1600	6390	388.7	1080	5730
308.3	1600	6330	390.3	1100	5630
310.0	1500	6210	392.0	1130	5700
311.6	1400	6090	393.6	1160	5730
313.2	1320	6060	395.3	1200	5730
314.9	1290	5860	396.9	1270	5830
316.5	1280	5860	398.5	1320	5780
318.2	1210	5890	400.2	1360	6000
319.8	1200	5860			
321.4	1210	5890			
323.1	1220	5860			
324.7	1290	6030			
326.4	1380	6060			
328.0	1500	6330			
329.6	1650	6300			
331.3	1650	6300			
332.9	1710	6300			
334.6	1690	6330			
336.2	1580	6330			
337.8	1510	6270			
339.5	1400	6300			

Table A-10, continued. Boring B-2282A OFFSET, S - R1 quality assurance analysis P- and S_H-wave data

VICTORIA COUNTY COL BORING B-2301 Source to Receiver and Receiver to Receiver Analysis

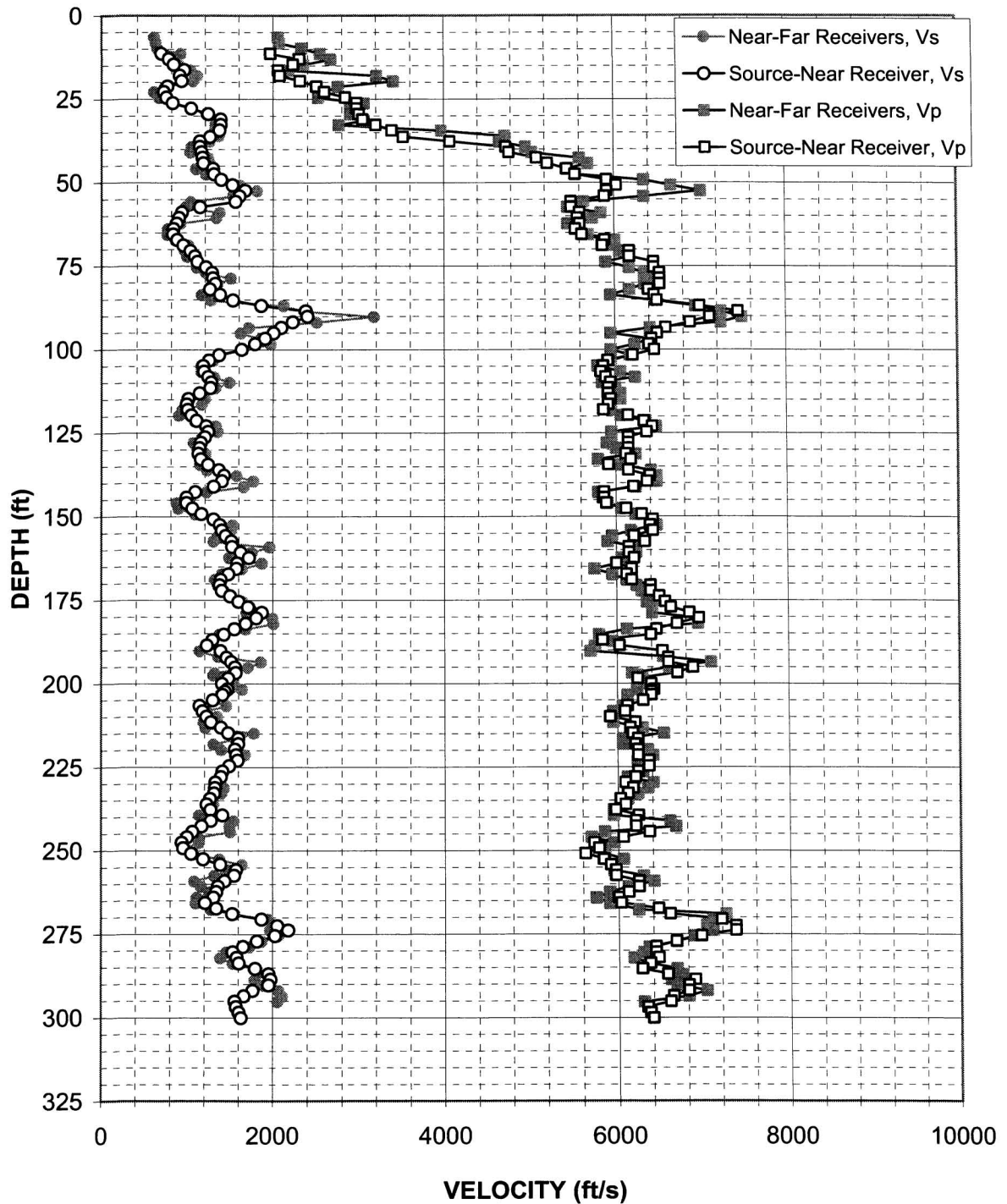


Figure A-11. Boring B-2301, R1 - R2 high resolution analysis and S - R1 quality assurance analysis P- and S_H-wave data

Depth (feet)	V _s (feet/sec)	V _p (feet/sec)	Depth (feet)	V _s (feet/sec)	V _p (feet/sec)	Depth (feet)	V _s (feet/sec)	V _p (feet/sec)
11.4	680	1970	93.4	2100	6590	175.4	1600	6560
13.0	760	2300	95.1	2010	6490	177.1	1710	6630
14.7	820	2230	96.7	1910	6430	178.7	1870	6840
16.3	950	2060	98.3	1790	6390	180.4	1810	6960
18.0	890	2080	100.0	1630	6460	182.0	1680	6700
19.6	920	2310	101.6	1360	6210	183.6	1550	6460
21.2	750	2500	103.3	1250	5920	185.3	1430	6390
22.9	710	2590	104.9	1180	5860	186.9	1290	5830
24.5	740	2840	106.5	1190	5830	188.6	1230	6030
26.2	810	2970	108.2	1240	5890	190.2	1390	6530
27.8	1030	2970	109.8	1270	5940	192.2	1460	6590
29.4	1230	3000	111.5	1260	5920	193.5	1510	6590
31.1	1380	3040	113.1	1130	5920	195.1	1560	6880
32.7	1380	3200	114.7	1000	5940	196.8	1570	6700
34.4	1370	3390	116.4	980	5920	198.4	1480	6240
36.3	1260	3520	118.0	1000	5860	200.0	1410	6390
37.6	1130	4070	119.7	1040	6150	201.7	1470	6430
39.3	1130	4740	121.3	1100	6330	202.3	1440	6390
40.9	1160	4780	122.9	1210	6430	203.3	1410	6390
42.6	1170	5100	124.6	1240	6360	205.0	1300	6300
44.2	1180	5230	126.2	1200	6150	206.6	1140	6120
45.8	1290	5460	127.9	1150	6150	208.2	1180	6090
47.5	1300	5550	129.5	1140	6150	209.9	1220	5920
49.1	1390	5920	131.1	1120	6120	211.5	1280	6210
50.8	1520	6030	132.8	1150	6180	213.2	1390	6150
52.4	1670	5920	134.4	1240	5920	214.8	1480	6180
54.0	1610	5890	136.1	1360	6150	216.4	1600	6240
55.7	1560	5500	137.7	1430	6390	218.1	1600	6210
57.3	1140	5500	139.3	1400	6360	219.7	1560	6240
59.0	920	5600	141.0	1300	6210	221.4	1570	6240
60.6	890	5580	142.6	1080	5860	223.0	1590	6360
62.2	860	5600	144.3	980	5860	224.7	1490	6360
63.9	820	5550	145.9	980	5890	226.3	1410	6240
65.5	820	5630	147.6	1050	6120	227.9	1390	6210
67.2	870	5890	149.2	1160	6300	229.6	1330	6090
68.8	940	5860	150.8	1300	6430	231.2	1320	6180
70.5	1020	6180	152.5	1380	6390	232.9	1310	6120
72.1	1080	6180	154.1	1400	6430	234.5	1270	6030
73.7	1110	6460	155.8	1450	6210	236.1	1230	6090
75.4	1210	6460	157.4	1510	6330	237.8	1270	5970
77.0	1280	6530	159.0	1520	6150	239.4	1410	6240
78.7	1290	6530	160.7	1620	6150	241.1	1280	6210
80.3	1320	6530	162.3	1720	6210	242.7	1170	6210
81.9	1260	6390	164.0	1580	6000	244.3	1060	6360
83.6	1380	6460	165.6	1570	6180	246.0	1000	6060
85.2	1530	6490	167.2	1480	6120	247.6	930	5730
86.9	1860	6990	168.9	1390	6180	249.3	950	5780
88.5	2380	7450	170.5	1380	6390	250.9	1040	5630
90.1	2400	7110	172.2	1400	6390	252.5	1190	5830
91.8	2230	6880	173.8	1500	6490	254.2	1390	5920

Table A-11. Boring B-2301, S - R1 quality assurance analysis P- and S_H-wave data

Depth (feet)	V_s (feet/sec)	V_p (feet/sec)
255.8	1570	5970
257.5	1550	5970
259.1	1440	6240
260.7	1360	6240
262.4	1340	6120
264.0	1310	6000
265.7	1210	6030
267.3	1340	6460
268.9	1530	6590
270.6	1870	7190
272.6	2060	7360
273.9	2180	7360
275.5	2030	6960
277.1	1820	6660
278.8	1660	6430
280.4	1540	6430
282.1	1580	6460
283.7	1610	6360
285.3	1800	6270
287.0	1950	6560
288.6	1980	6880
290.3	1950	6810
291.9	1770	6810
293.5	1670	6630
295.2	1560	6590
296.8	1570	6330
298.5	1610	6360
300.1	1630	6390

Table A-11, continued. Boring B-2301, S - R1 quality assurance analysis P- and S_H-wave data

VICTORIA COUNTY COL BORING B-2302 Source to Receiver and Receiver to Receiver Analysis

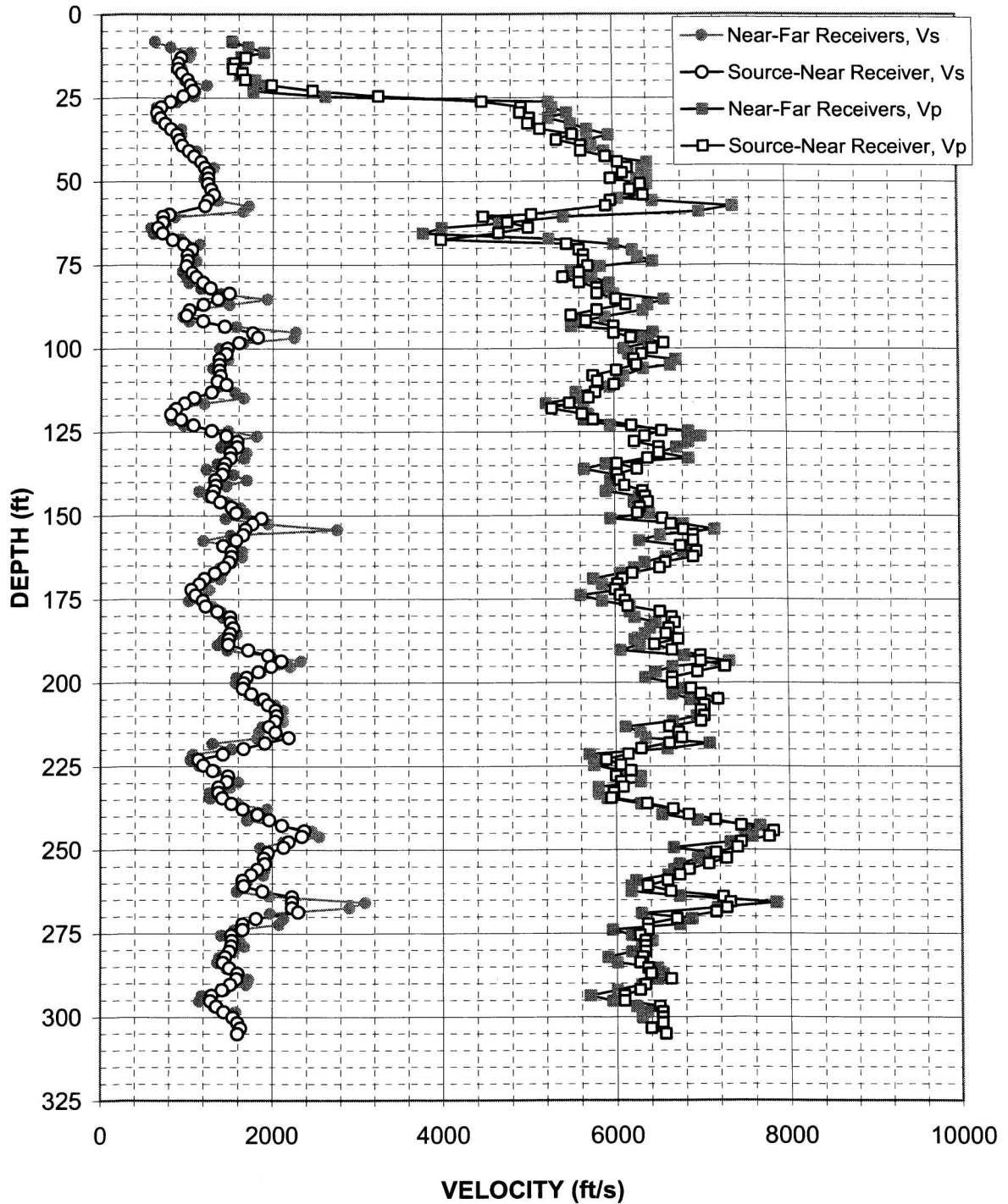


Figure A-12. Boring B-2302, R1 - R2 high resolution analysis and S - R1 quality assurance analysis P- and S_H-wave data

Depth (feet)	V _s (feet/sec)	V _p (feet/sec)	Depth (feet)	V _s (feet/sec)	V _p (feet/sec)	Depth (feet)	V _s (feet/sec)	V _p (feet/sec)
13.0	920	1670	95.4	1760	6000	177.1	1220	6150
14.7	880	1550	96.7	1820	6210	178.7	1360	6530
16.3	880	1530	98.3	1600	6590	180.4	1500	6660
17.6	930	1640	100.0	1470	6460	182.0	1510	6700
19.6	1000	1670	101.6	1460	6330	183.6	1540	6630
21.2	1030	1980	103.3	1370	6240	185.3	1500	6590
22.9	1060	2460	104.9	1370	6270	186.9	1490	6730
24.5	940	3250	106.5	1370	6030	188.6	1480	6460
26.2	790	4460	108.2	1390	5750	190.2	1720	6660
27.8	680	4930	109.8	1350	5810	191.8	1950	6990
29.4	630	4910	110.8	1460	6000	193.5	2100	6990
31.1	670	5020	113.1	1280	5780	195.1	1980	7280
32.7	730	5000	114.7	1080	5700	196.8	1830	6960
34.4	800	5150	116.4	970	5480	198.4	1700	6660
36.0	870	5530	118.0	870	5280	200.0	1660	6660
37.6	900	5340	119.7	810	5630	201.7	1650	6880
39.3	930	5630	121.3	920	5750	203.3	1750	6990
40.9	1010	5630	122.9	1070	6210	205.0	1900	7190
42.6	1070	5920	124.6	1280	6560	206.6	1950	7030
44.2	1160	6060	126.2	1460	6360	208.2	2040	6990
45.8	1200	6180	127.9	1580	6240	209.9	2050	7030
47.5	1240	6120	129.5	1580	6530	211.5	2030	6990
49.1	1240	5970	131.1	1500	6530	213.2	1960	6630
50.8	1240	6330	132.8	1500	6390	214.8	2040	6730
52.4	1270	6210	134.4	1440	6030	216.4	2190	6770
54.0	1310	6360	136.1	1420	6270	218.1	1910	6630
55.7	1240	5970	137.7	1410	6030	219.7	1660	6300
57.3	1210	5920	139.3	1330	6060	221.4	1420	6150
60.0	780	5040	141.0	1330	6120	223.0	1140	5890
60.6	710	4470	142.6	1310	6330	224.7	1200	6060
62.2	710	4760	144.3	1290	6360	226.3	1310	6180
63.9	650	5000	145.9	1390	6390	227.9	1480	6000
65.5	700	4650	147.6	1520	6300	229.6	1470	6060
67.5	820	3980	149.2	1570	6270	231.2	1370	6090
68.8	950	5460	150.8	1870	6560	232.9	1370	5970
70.5	1050	5600	152.5	1760	6660	234.5	1420	5940
72.1	1000	5650	154.1	1680	6810	236.1	1520	6360
73.7	1000	5650	155.8	1650	6920	237.8	1650	6660
75.4	980	5700	157.4	1570	6920	239.4	1820	6840
77.3	1050	5600	159.0	1420	6770	241.1	1960	7150
78.7	1100	5410	160.7	1520	6960	242.7	2110	7450
80.3	1180	5600	162.3	1520	6920	244.3	2370	7810
81.9	1270	5810	164.0	1490	6590	246.0	2340	7770
83.6	1490	5810	165.6	1430	6530	247.6	2190	7450
85.2	1360	6030	167.2	1330	6210	249.3	2130	7400
86.9	1190	6150	168.9	1210	6090	250.9	1950	7150
88.5	1020	5810	170.5	1140	6030	252.5	1900	7280
90.1	990	5500	172.2	1050	6000	254.2	1910	7070
91.8	1180	5680	173.8	1100	6060	255.8	1820	6840
93.4	1440	6000	175.4	1190	6120	257.5	1750	6730

Table A-12. Boring B-2302, S - R1 quality assurance analysis P- and S_H-wave data

Depth (feet)	V _s (feet/sec)	V _p (feet/sec)
259.1	1650	6590
260.7	1670	6360
262.4	1880	6630
264.0	2230	7230
265.7	2230	7320
267.3	2230	7280
268.6	2300	7150
270.6	1810	6700
272.2	1650	6360
273.9	1650	6360
275.5	1520	6270
277.1	1530	6330
278.8	1520	6330
280.4	1500	6330
282.1	1450	6300
283.7	1430	6270
285.3	1500	6360
287.0	1590	6390
288.6	1580	6630
290.3	1510	6330
291.9	1420	6270
293.5	1300	6090
295.2	1280	6090
296.8	1350	6490
298.5	1440	6530
300.1	1540	6530
301.8	1590	6530
303.4	1630	6390
305.0	1590	6560

Table A-12, continued. Boring B-2302, S - R1 quality assurance analysis P- and S_H-wave data

VICTORIA COUNTY COL BORING B-2303 Source to Receiver and Receiver to Receiver Analysis

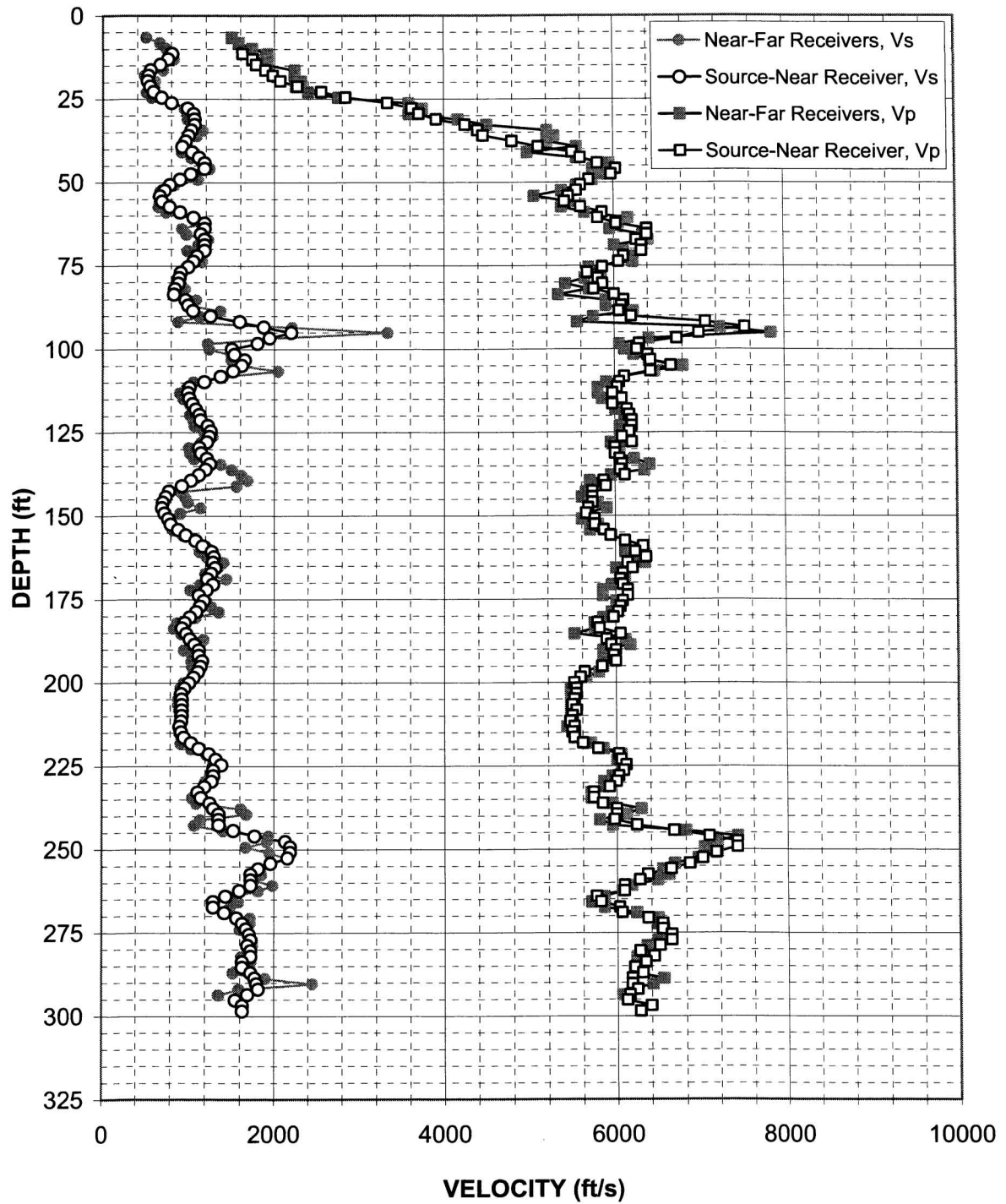


Figure A-13. Boring B-2303, R1 - R2 high resolution analysis and S - R1 quality assurance analysis P- and S_H-wave data

Depth (feet)	V _s (feet/sec)	V _p (feet/sec)	Depth (feet)	V _s (feet/sec)	V _p (feet/sec)	Depth (feet)	V _s (feet/sec)	V _p (feet/sec)
11.4	810	1620	93.4	1870	7540	175.4	1180	6090
13.0	760	1730	95.1	2200	6990	177.1	1140	6060
14.7	670	1780	96.7	1940	6730	178.7	1100	6030
16.3	550	1890	98.3	1800	6300	180.4	1020	5970
18.0	530	1980	100.0	1500	6270	182.0	960	5780
19.6	520	2070	101.6	1530	6390	183.6	930	5810
21.2	550	2270	103.3	1650	6430	185.3	980	6060
22.9	590	2550	104.9	1610	6660	186.9	1020	5890
24.5	680	2840	106.5	1510	6430	188.6	1080	5940
26.2	800	3330	108.2	1370	6120	190.2	1130	6000
27.8	990	3620	109.8	1180	6060	191.8	1130	5970
29.4	1060	3700	111.5	1010	6030	193.5	1160	6000
31.1	1060	3910	113.1	1000	5970	195.1	1140	5830
32.7	1060	4250	114.7	1010	6090	196.8	1120	5630
34.4	1030	4400	116.4	1050	5970	198.4	1070	5580
36.0	1000	4460	118.0	1080	6150	200.0	1020	5500
37.6	960	4800	119.7	1130	6180	201.7	960	5530
39.3	930	5100	121.3	1140	6210	203.3	930	5530
40.9	1040	5500	122.9	1220	6210	205.0	930	5500
42.6	1120	5600	124.6	1260	6180	206.6	930	5480
44.2	1180	5810	126.2	1240	6090	208.2	930	5530
45.8	1180	6030	127.9	1210	6210	209.9	930	5480
47.5	1020	5970	129.5	1130	6000	211.5	930	5460
49.1	900	5700	131.1	1150	6000	213.2	910	5500
50.8	780	5600	132.8	1210	6060	214.8	930	5480
52.4	720	5550	134.4	1250	6090	216.4	960	5500
54.0	660	5460	136.1	1200	6060	218.1	1040	5600
55.7	690	5410	137.7	1120	6120	219.7	1130	5780
57.3	780	5600	139.3	1030	5860	221.4	1240	6030
59.0	900	5860	141.0	930	5890	223.0	1320	6060
60.6	1060	5810	142.6	780	5730	224.7	1390	6120
62.2	1180	6030	144.3	740	5730	226.3	1290	6090
63.9	1180	6390	145.9	710	5730	227.9	1290	6030
65.5	1140	6390	147.6	700	5680	229.6	1270	6000
67.2	1180	6270	149.2	730	5650	231.2	1190	5920
68.8	1180	6330	150.8	770	5750	232.9	1120	5730
70.5	1180	6330	152.5	800	5750	234.5	1150	5730
72.1	1100	6120	154.1	890	5860	236.1	1250	5830
73.7	1060	6060	155.8	970	5940	237.8	1290	6000
75.4	1000	5860	157.4	1090	6120	239.4	1360	6000
77.0	910	5680	159.0	1170	6330	241.1	1360	5970
78.7	890	5810	160.7	1270	6240	242.7	1360	6240
80.3	880	5860	162.3	1300	6360	244.3	1530	6660
81.9	840	5750	164.0	1290	6150	246.0	1770	7070
83.6	830	6000	165.6	1310	6210	247.6	2130	7400
85.2	960	6120	167.2	1270	6090	249.3	2190	7400
86.9	1000	6090	168.9	1220	6060	250.9	2190	7150
88.5	1050	6060	170.5	1290	6090	252.5	2160	6990
90.1	1250	6210	172.2	1210	6150	254.2	1960	6840
91.8	1590	7070	173.8	1130	6150	255.8	1810	6630

Table A-13. Boring B-2303, S - R1 quality assurance analysis P- and S_H-wave data

Depth (feet)	V _s (feet/sec)	V _p (feet/sec)
257.5	1720	6360
259.1	1720	6270
260.7	1720	6090
262.4	1590	6090
264.0	1440	5750
265.7	1290	5810
267.3	1290	6030
268.9	1420	6060
270.6	1560	6360
272.2	1630	6530
273.9	1670	6530
275.5	1710	6630
277.1	1720	6630
278.8	1690	6490
280.4	1720	6270
282.1	1720	6430
283.7	1630	6330
285.3	1630	6210
287.0	1720	6300
288.6	1770	6180
290.3	1790	6180
291.9	1810	6240
293.5	1690	6150
295.2	1550	6120
296.8	1630	6390
298.5	1630	6270

Table A-13, continued. Boring B-2303, S - R1 quality assurance analysis P- and S_H-wave data

VICTORIA COUNTY COL BORING B-2304 Source to Receiver and Receiver to Receiver Analysis

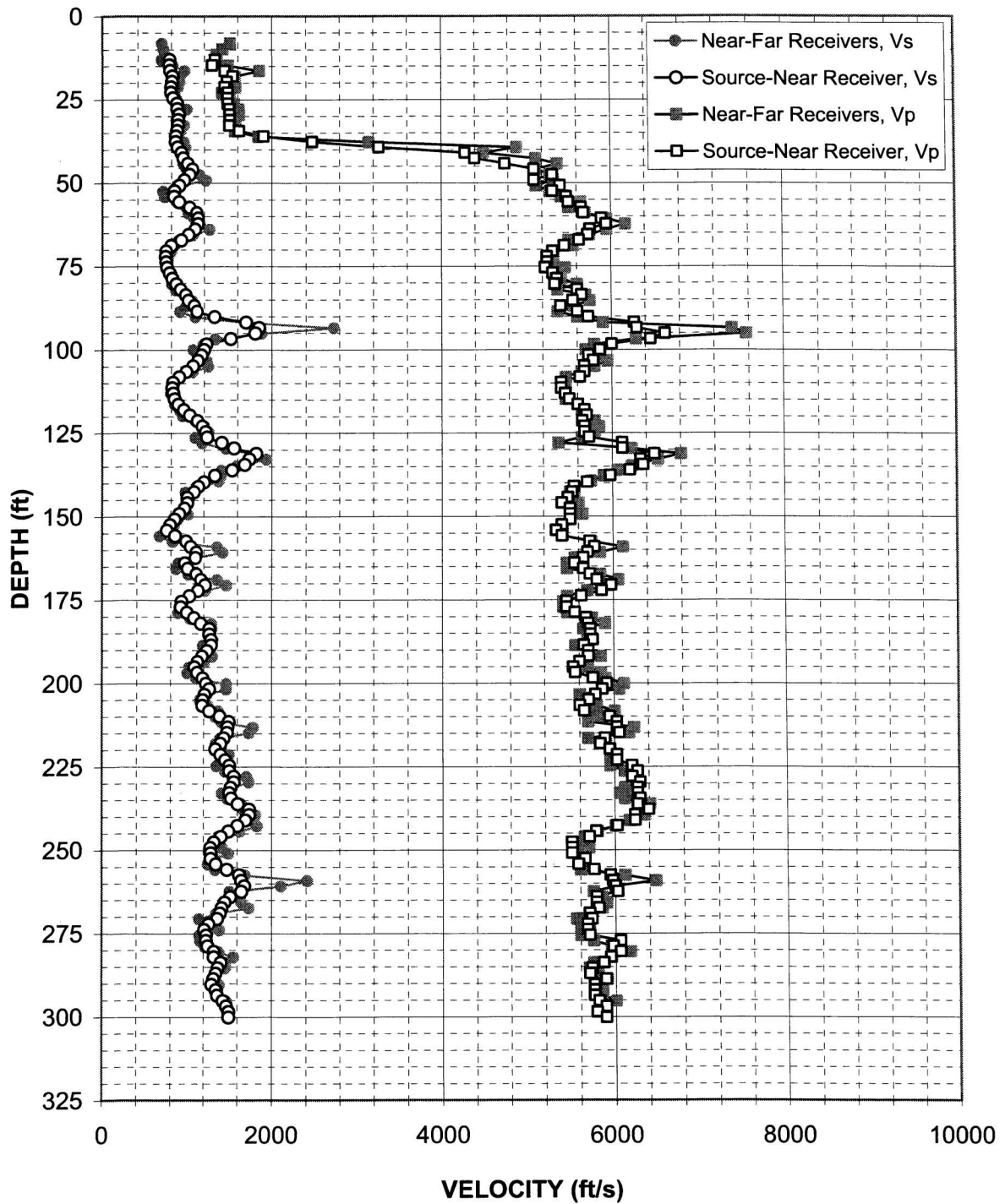


Figure A-14. Boring B-2304, R1 - R2 high resolution analysis and S - R1 quality assurance analysis P- and S_H-wave data

Depth (feet)	V _s (feet/sec)	V _p (feet/sec)	Depth (feet)	V _s (feet/sec)	V _p (feet/sec)	Depth (feet)	V _s (feet/sec)	V _p (feet/sec)
13.0	770	1320	95.1	1810	6630	177.1	920	5460
14.7	770	1290	96.7	1520	6460	178.7	990	5550
16.3	780	1440	98.3	1230	6000	180.4	1080	5680
18.0	810	1540	100.0	1200	5860	182.0	1160	5700
19.6	800	1470	101.6	1170	5730	183.6	1270	5730
21.2	790	1440	103.3	1120	5780	185.3	1270	5730
22.9	790	1480	104.9	1060	5680	186.9	1290	5750
24.5	820	1480	106.5	980	5680	188.6	1290	5650
26.2	860	1480	108.2	890	5630	190.2	1240	5700
27.8	870	1500	109.8	820	5410	191.8	1180	5700
29.4	890	1500	111.5	810	5410	193.5	1120	5600
31.1	880	1500	113.1	820	5460	195.1	1090	5530
32.7	870	1500	114.7	840	5500	196.8	1120	5550
34.4	860	1610	116.4	880	5600	198.4	1190	5750
36.0	850	1900	118.0	950	5680	200.0	1230	5920
37.6	850	2470	119.7	1020	5700	201.7	1270	5860
39.3	870	3260	121.3	1120	5650	203.3	1210	5780
40.9	920	4280	122.9	1180	5680	205.0	1190	5700
42.6	940	4400	124.6	1220	5680	206.6	1180	5600
44.2	1000	4760	126.2	1240	5730	208.2	1270	5650
45.8	1050	5100	127.9	1410	6120	209.9	1390	5940
47.5	1020	5320	129.5	1560	6120	211.5	1500	6030
49.1	950	5100	131.1	1820	6490	213.2	1490	6030
50.8	890	5410	132.8	1740	6330	214.8	1480	6060
52.4	840	5320	134.4	1690	6360	216.4	1440	5890
54.0	830	5480	136.1	1540	6210	218.1	1400	5830
55.7	890	5500	137.7	1330	5970	219.7	1340	5940
57.3	1020	5650	139.7	1200	5700	221.4	1400	6030
59.0	1110	5680	141.0	1130	5550	223.0	1460	6030
60.6	1120	5890	142.6	1080	5530	224.7	1510	6210
62.2	1120	5940	144.3	1000	5480	226.3	1510	6270
63.9	1090	5750	145.9	1000	5410	227.9	1560	6210
65.5	1000	5730	147.6	960	5500	229.6	1560	6300
67.2	920	5630	149.2	900	5500	231.2	1520	6270
68.8	800	5460	150.8	840	5500	232.9	1510	6270
70.5	740	5320	152.5	790	5410	234.5	1530	6300
72.1	730	5250	154.1	750	5340	236.1	1610	6270
73.7	740	5250	155.8	850	5410	237.8	1740	6390
75.4	750	5230	157.4	980	5730	239.4	1740	6240
77.0	780	5320	159.0	1040	5780	241.1	1700	6240
78.7	810	5360	160.7	1110	5700	242.7	1600	6030
80.3	860	5340	162.3	1100	5650	244.3	1500	5780
81.9	910	5600	164.0	970	5550	246.0	1410	5700
83.6	970	5650	165.6	1000	5650	247.6	1320	5500
85.2	1000	5550	167.2	1110	5730	249.3	1280	5500
86.9	1080	5410	168.9	1160	5810	250.9	1290	5500
88.5	1110	5600	170.5	1210	5970	252.5	1290	5650
90.1	1320	5730	172.2	1130	5860	254.2	1350	5580
91.8	1700	6270	173.8	1020	5630	255.8	1480	5750
93.4	1850	6300	175.4	930	5460	257.5	1620	5940

Table A-14. Boring B-2304, S - R1 quality assurance analysis P- and S_H-wave data

Depth (feet)	V _s (feet/sec)	V _p (feet/sec)
259.1	1650	5970
260.7	1680	6000
262.4	1650	6030
264.0	1520	5780
265.7	1450	5780
267.3	1420	5810
268.9	1400	5700
270.6	1360	5730
272.2	1260	5680
273.9	1210	5680
275.5	1230	5700
277.1	1230	6060
278.8	1250	5970
280.4	1320	6060
282.1	1320	5940
283.7	1410	5860
285.3	1370	5730
287.0	1350	5700
288.6	1320	5890
290.3	1300	5750
291.9	1350	5750
293.5	1360	5750
295.2	1430	5810
296.8	1470	5890
298.5	1500	5780
300.1	1500	5890

Table A-14, continued. Boring B-2304, S - R1 quality assurance analysis P- and S_H-wave data

VICTORIA COUNTY COL BORING B-2305 Source to Receiver and Receiver to Receiver Analysis

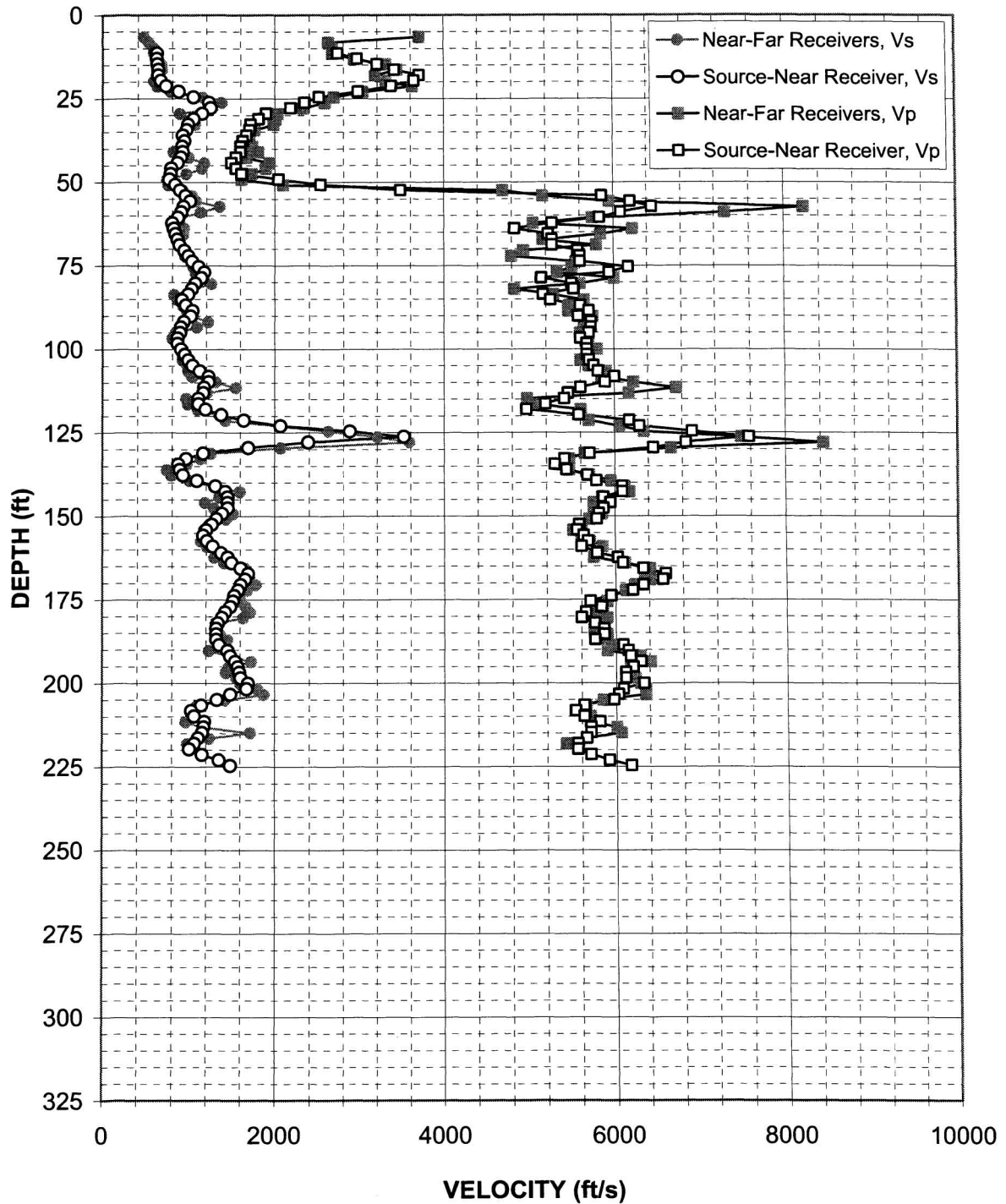


Figure A-15. Boring B-2305, R1 - R2 high resolution analysis and S - R1 quality assurance analysis P- and S_H-wave data

Depth (feet)	V _s (feet/sec)	V _p (feet/sec)	Depth (feet)	V _s (feet/sec)	V _p (feet/sec)	Depth (feet)	V _s (feet/sec)	V _p (feet/sec)
11.4	620	2730	93.4	900	5730	175.4	1510	5700
13.0	610	2960	95.1	890	5700	177.1	1490	5830
14.7	620	3200	96.7	860	5600	178.7	1430	5650
16.3	630	3400	98.3	860	5680	180.4	1390	5600
18.0	630	3700	100.0	900	5680	182.0	1340	5750
19.6	660	3640	101.6	940	5680	183.6	1320	5860
21.2	720	3370	103.3	990	5700	185.3	1320	5860
22.9	870	2970	104.9	1030	5750	186.9	1320	5750
24.5	1040	2510	106.5	1120	5810	188.6	1350	6090
26.2	1230	2340	108.2	1230	6000	190.2	1450	6150
27.8	1250	2180	109.8	1230	5890	191.8	1490	6180
29.4	1150	1900	111.5	1170	5600	193.5	1540	6300
31.1	1040	1810	113.1	1160	5460	195.1	1570	6210
32.7	980	1720	114.7	1110	5410	196.8	1590	6120
34.4	960	1700	116.4	1110	5190	198.4	1610	6120
36.0	920	1670	118.0	1190	4960	200.0	1690	6330
37.6	940	1620	119.7	1380	5580	201.7	1670	6090
39.3	910	1600	121.3	1640	6180	203.3	1490	6030
40.9	920	1600	122.9	2070	6300	205.0	1330	5970
42.6	900	1540	124.6	2880	6920	206.6	1150	5630
44.2	860	1490	126.2	3520	7580	208.2	1030	5530
45.8	780	1540	127.9	2390	6840	209.9	1060	5630
47.5	780	1610	129.5	1690	6460	211.5	1180	5810
49.1	760	2040	131.1	1160	5700	213.2	1170	5700
50.8	830	2530	132.8	960	5410	214.8	1160	5700
52.4	890	3480	134.4	870	5300	216.4	1110	5650
54.0	950	5860	136.1	890	5430	218.1	1060	5550
55.7	1000	6210	137.7	930	5680	219.7	1000	5550
57.3	930	6460	139.3	1090	5780	221.4	1160	5700
59.0	900	6090	141.0	1310	6090	223.0	1350	5920
60.6	860	5830	142.6	1430	6090	224.7	1490	6180
62.2	800	5280	144.3	1450	5860			
63.9	810	4830	145.9	1450	5940			
65.5	840	5230	147.6	1450	5860			
67.2	860	5280	149.2	1390	5810			
68.8	880	5280	150.8	1320	5780			
70.5	940	5580	152.5	1270	5580			
72.1	990	5600	154.1	1200	5550			
73.7	1030	5600	155.8	1160	5630			
75.4	1110	6180	157.4	1210	5680			
77.0	1170	5940	159.0	1280	5600			
78.7	1140	5150	161.0	1380	5780			
80.3	1070	5500	162.3	1450	6030			
81.9	1030	5530	164.0	1500	6090			
83.6	990	5170	165.6	1600	6330			
85.2	910	5250	167.2	1690	6590			
86.9	960	5600	168.9	1660	6560			
88.5	1030	5700	170.5	1600	6330			
90.1	1010	5580	172.2	1570	6210			
91.8	930	5730	173.8	1530	5940			

Table A-15. Boring B-2305, S - R1 quality assurance analysis P- and S_H-wave data

VICTORIA COUNTY COL BORING B-2306 Source to Receiver and Receiver to Receiver Analysis

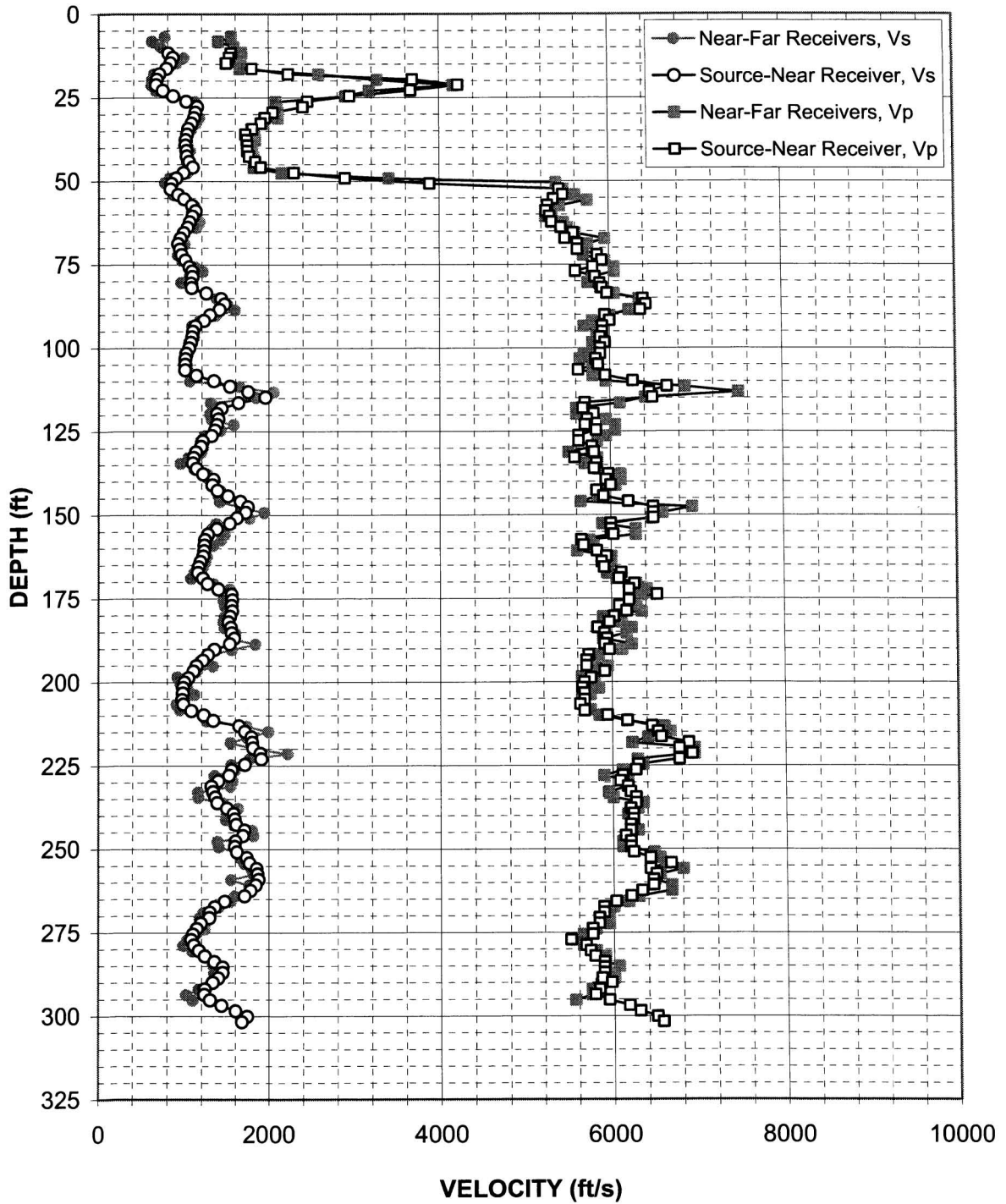


Figure A-16. Boring B-2306, R1 - R2 high resolution analysis and S - R1 quality assurance analysis P- and S_H-wave data

Depth (feet)	V _s (feet/sec)	V _p (feet/sec)	Depth (feet)	V _s (feet/sec)	V _p (feet/sec)	Depth (feet)	V _s (feet/sec)	V _p (feet/sec)
11.7	810	1550	93.4	1120	5920	175.4	1560	6210
13.0	860	1520	95.1	1100	5920	177.1	1560	6090
14.7	830	1490	96.7	1090	5890	178.7	1560	6180
16.3	780	1800	98.3	1070	5940	180.4	1540	6030
18.0	700	2230	100.0	1050	5890	182.0	1520	5970
19.6	670	3680	101.6	1020	5890	183.6	1550	5830
21.2	660	4220	103.3	1010	5830	185.3	1560	5920
22.9	740	3660	104.9	1000	5860	186.9	1590	5940
24.5	860	2940	106.5	1000	5630	188.6	1530	5920
26.2	1020	2450	108.2	1140	5940	190.2	1350	5970
27.8	1140	2400	109.8	1340	6270	191.8	1270	5730
29.4	1120	2050	111.5	1530	6660	193.5	1210	5700
31.1	1110	1950	113.1	1750	6460	195.1	1140	5700
32.7	1080	1910	114.7	1960	6490	196.8	1100	5920
34.4	1040	1800	116.4	1640	5700	198.7	1050	5750
36.0	1030	1720	118.0	1440	5680	200.0	1000	5680
37.6	1010	1730	119.7	1380	5810	201.7	980	5650
39.3	1010	1740	121.3	1400	5730	203.3	980	5680
40.9	1020	1740	122.9	1380	5700	205.3	970	5680
42.6	1020	1760	124.6	1360	5830	206.6	990	5630
44.2	1050	1840	126.2	1320	5630	208.6	1080	5680
45.8	1090	1910	127.9	1210	5630	209.9	1220	5940
47.5	980	2290	129.5	1190	5780	211.5	1340	6180
49.1	900	2890	131.1	1130	5810	213.2	1640	6460
50.8	850	3880	132.8	1100	5580	214.8	1720	6530
52.4	830	5410	134.4	1100	5830	216.4	1790	6560
54.0	920	5460	136.1	1140	5810	218.1	1800	6880
55.4	990	5340	137.7	1210	5970	219.7	1810	6770
57.3	1080	5280	139.3	1340	5940	221.4	1900	6920
59.0	1130	5250	141.0	1330	6000	223.0	1910	6770
60.6	1090	5300	142.6	1390	5830	224.7	1720	6300
62.2	1060	5320	144.3	1510	5920	226.3	1560	6270
63.9	1030	5430	145.9	1660	6210	227.9	1530	6120
65.5	990	5580	147.6	1750	6490	229.6	1400	6090
67.2	950	5480	149.2	1720	6490	231.2	1320	6180
68.8	920	5630	150.8	1620	6490	232.9	1340	6210
70.5	940	5630	152.5	1530	6000	234.5	1360	6270
72.1	960	5860	154.1	1380	6000	236.1	1390	6270
73.7	1010	5920	155.8	1270	6030	237.8	1500	6210
75.7	1050	5810	157.4	1240	5650	239.4	1580	6240
77.0	1090	5600	159.0	1230	5680	241.1	1590	6240
78.7	1090	5830	160.7	1230	5830	242.7	1610	6210
80.6	1070	5890	162.3	1220	5940	244.3	1710	6210
81.9	1080	5920	164.0	1190	5890	246.0	1690	6150
83.6	1250	5970	165.6	1170	5920	247.6	1600	6210
85.2	1430	6390	167.2	1160	6120	249.3	1590	6210
86.9	1470	6430	168.9	1210	6090	250.9	1620	6240
88.5	1410	6360	170.5	1270	6270	252.5	1740	6430
90.1	1300	5940	172.2	1400	6210	254.2	1770	6660
91.8	1220	6000	173.8	1560	6530	255.8	1860	6430

Table A-16. Boring B-2306, S - R1 quality assurance analysis P- and S_H-wave data

Depth (feet)	V _s (feet/sec)	V _p (feet/sec)
257.5	1870	6490
259.1	1880	6460
260.7	1850	6460
262.4	1780	6330
264.0	1710	6210
265.7	1470	6030
267.3	1360	5890
268.9	1300	5890
270.6	1290	5830
272.2	1190	5830
273.9	1140	5750
275.5	1100	5750
277.1	1080	5500
278.8	1110	5680
280.4	1170	5730
282.1	1240	5780
283.7	1350	5890
285.3	1450	5890
287.0	1450	5890
288.6	1400	5860
289.9	1330	5970
291.9	1240	5830
293.5	1230	5780
295.2	1300	5940
296.8	1440	6180
298.5	1600	6300
300.1	1740	6490
301.8	1680	6560

Table A-16, continued. Boring B-2306, S - R1 quality assurance analysis P- and S_H-wave data

VICTORIA COUNTY COL BORING B-2307 Source to Receiver and Receiver to Receiver Analysis

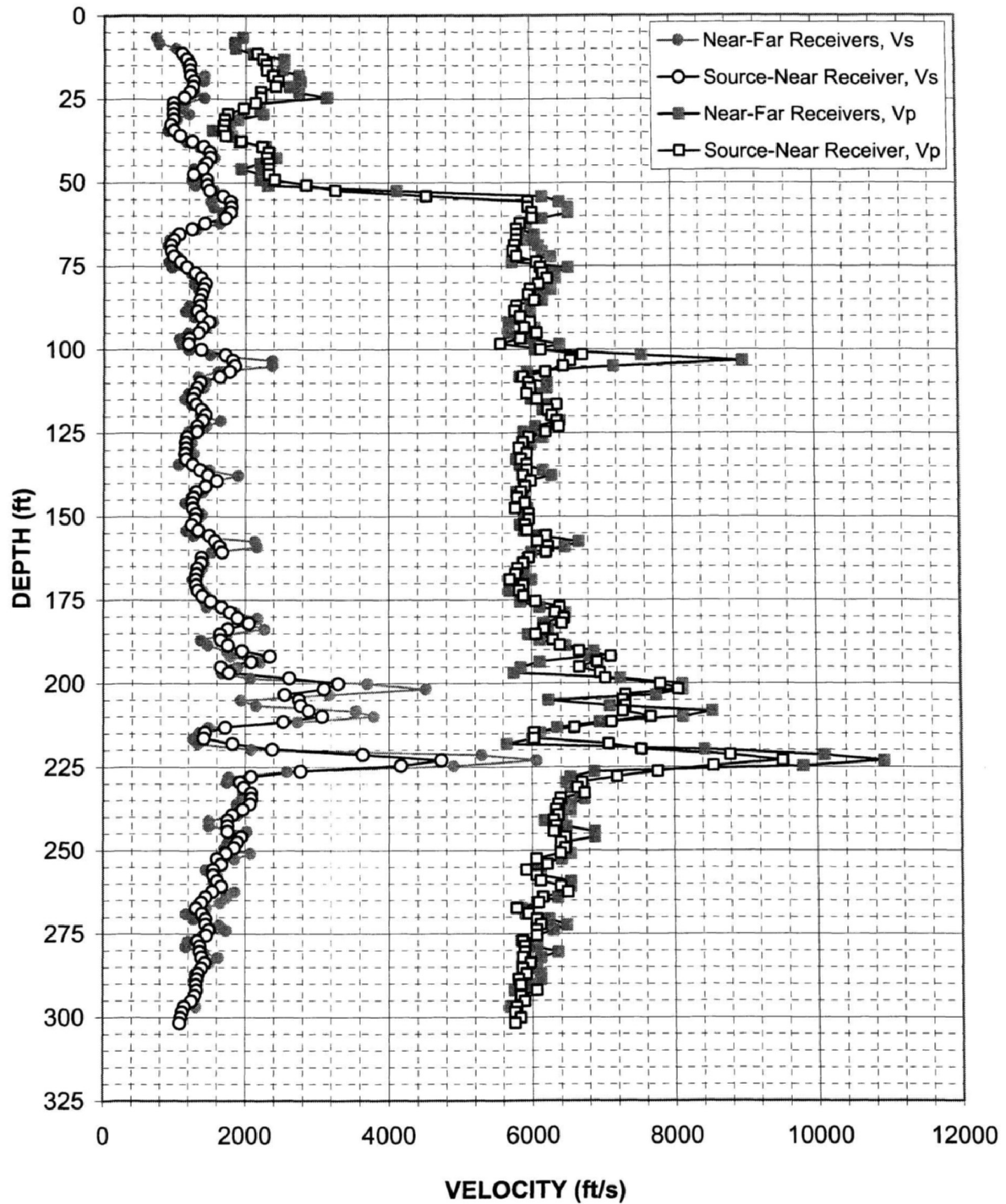


Figure A-17. Boring B-2307, R1 - R2 high resolution analysis and S - R1 quality assurance analysis P- and S_H-wave data

Depth (feet)	V _s (feet/sec)	V _p (feet/sec)	Depth (feet)	V _s (feet/sec)	V _p (feet/sec)	Depth (feet)	V _s (feet/sec)	V _p (feet/sec)
11.4	1100	2170	93.4	1390	5920	175.4	1510	6060
13.0	1160	2240	95.1	1340	6090	177.1	1670	6390
14.7	1210	2290	96.7	1200	5860	178.7	1790	6330
16.3	1210	2300	98.3	1190	5580	180.4	1900	6460
18.0	1220	2390	100.0	1380	6150	182.0	2060	6430
19.6	1270	2460	101.6	1720	6730	183.6	1760	6180
21.2	1250	2430	103.3	1820	6560	185.3	1650	6060
22.9	1210	2220	104.9	1850	6460	186.9	1660	6300
24.5	1130	2220	106.5	1780	6210	188.6	1760	6390
26.2	970	2140	108.2	1640	5890	190.2	1950	6660
27.8	970	1970	109.8	1360	5970	191.8	2340	7110
29.4	970	1750	111.5	1320	6000	193.5	2080	6920
31.1	970	1710	113.1	1280	5940	195.1	1660	6660
32.7	930	1700	114.7	1260	6090	196.8	1770	6960
34.4	980	1680	116.4	1300	6360	198.4	2620	7030
36.0	1070	1720	118.0	1380	6240	200.0	3300	7810
37.6	1240	1940	119.7	1440	6300	201.7	3100	8060
39.3	1410	2240	121.3	1400	6360	203.3	2550	7320
40.9	1490	2330	122.9	1320	6390	205.0	2750	7280
42.6	1500	2300	124.6	1320	6210	206.6	2780	7320
44.2	1450	2330	126.2	1170	5970	208.2	2880	7280
45.8	1390	2330	127.9	1160	5890	209.9	3070	7670
47.5	1260	2330	129.5	1160	5830	211.5	2530	7110
49.1	1450	2410	131.1	1150	5940	213.2	1720	6590
50.8	1460	2850	132.8	1160	5860	214.8	1440	6030
52.4	1490	3260	134.4	1260	5940	216.4	1420	6030
54.0	1680	4520	136.1	1360	5940	218.1	1820	7070
55.7	1790	5970	137.7	1470	5890	219.7	2380	7540
57.3	1800	5970	139.3	1600	6000	221.4	3640	8790
59.0	1790	6030	141.0	1440	5920	223.0	4720	9520
60.6	1720	6030	142.6	1300	5860	224.7	4160	8550
62.2	1430	5860	144.3	1270	5810	226.3	2780	7770
63.9	1240	5810	145.9	1250	5920	227.9	2080	7190
65.5	1060	5810	147.6	1260	5780	229.6	1930	6700
67.2	980	5810	149.2	1300	5970	231.2	1980	6630
68.8	940	5780	150.8	1290	5970	232.9	2080	6730
70.5	940	5750	152.5	1240	5920	234.5	2080	6390
72.1	980	5810	154.1	1340	5940	236.1	2070	6360
73.7	1080	6090	155.8	1490	6210	237.8	1970	6330
75.4	1170	6150	157.4	1570	6090	239.4	1820	6360
77.0	1290	6180	159.0	1640	6240	241.1	1750	6300
78.7	1380	6240	160.7	1670	6210	242.7	1750	6330
80.3	1440	6120	162.3	1380	5970	244.3	1750	6300
81.9	1410	6000	164.0	1380	5890	246.0	1940	6460
83.6	1380	5970	165.6	1320	5810	247.6	1890	6390
85.2	1350	6060	167.2	1310	5780	249.3	1850	6460
86.9	1360	5810	168.9	1300	5700	250.9	1730	6390
88.5	1320	5780	170.5	1310	5890	252.5	1610	6060
90.1	1380	5860	172.2	1330	5830	254.2	1670	6210
91.8	1490	6000	173.8	1390	5890	255.8	1560	5920

Table A-17. Boring B-2307, S - R1 quality assurance analysis P- and S_H-wave data

Depth (feet)	V _s (feet/sec)	V _p (feet/sec)
257.5	1560	6060
259.1	1610	6120
260.7	1670	6390
262.4	1540	6490
264.0	1450	6150
265.7	1390	6090
267.3	1310	5780
268.9	1390	5940
270.6	1450	6060
272.2	1450	6120
273.9	1490	6060
275.5	1460	6060
277.1	1330	5860
278.8	1360	5890
280.4	1360	5890
282.1	1390	5860
283.7	1440	5970
285.3	1390	5860
287.0	1340	5920
288.6	1320	5810
290.3	1310	5830
291.9	1320	6060
293.5	1290	5830
295.2	1250	5890
296.8	1150	5780
298.5	1110	5750
300.1	1100	5830
301.8	1080	5750

Table A-17, continued. Boring B-2307, S - R1 quality assurance analysis P- and S_H-wave data

APPENDIX B

CALIPER, NATURAL GAMMA, RESISTIVITY, AND SPONTANEOUS POTENTIAL LOGS



VICTORIA

B11ELOGUP01

COMPANY GEOVISION
WELL B-11
FIELD
COUNTRY
STATE
COUNTY
LAT.:
LONG.:

OTHER SERVICES

Perm. Da..
Log. Da..
Drill Datum

Elev

KB 0.00
DF 0.00
GL 0.00

DATE	23 Oct 07	15 Dec 06	15 Dec 06
RUN#	1	0	0
TYPE OF LOG	ELOG		
DEPTH DRILLER	310.00	0.00	0.00
DEPTH LOGGER	310.00	0.00	0.00
LOG DEEPEST	300.00	0.00	0.00
LOG SHALLOW	40.00	0.00	0.00
FLUID IN HOLE	DRILLING MUD		
SALINITY			
DENSITY			
LEVEL			
MAX TEMP °C	0.00	0.00	0.00
RIG TIME			
RECORDED BY	C. CARTER		
WITNESSED BY			

RUN#	BIT RECORD			CASING RECORD			
	SIZE	FROM	TO	SIZE	WEIGHT	FROM	TO
1	5.00	0.00	0.00	0.00	0.00	0.00	0.00
0	0.00	0.00	0.00	0.00	0.00	0.00	0.00
0	0.00	0.00	0.00	0.00	0.00	0.00	0.00

ROBERTSON GEOLOGGING TECHNOLOGY

REMARKS (C:\Data\7501 MACTEC Victoria County\B-11 2..

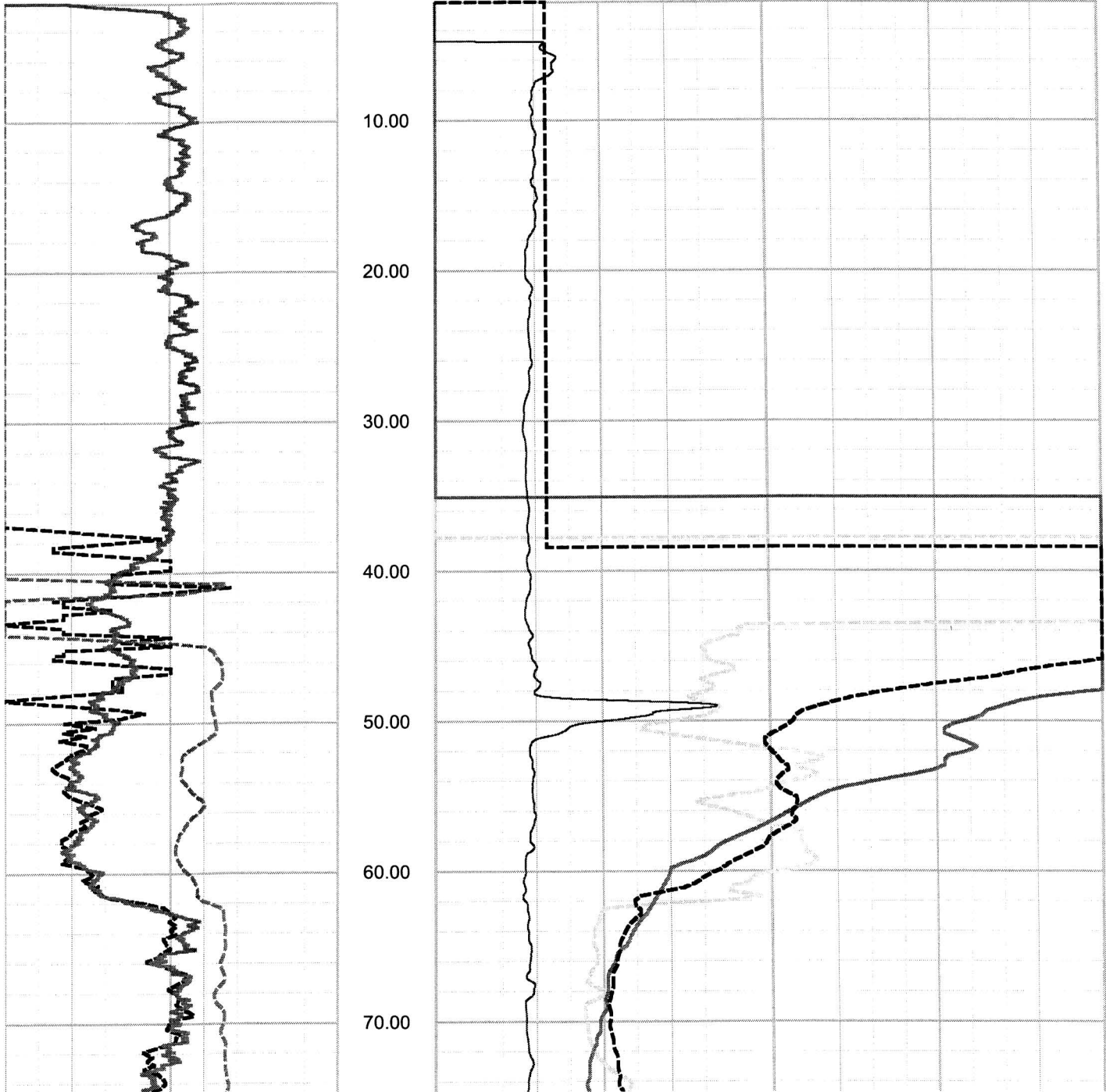
MACTEC Engineering and Consulting, Inc.
Exelon COL - Victoria County Site

Project 6468-07-1777

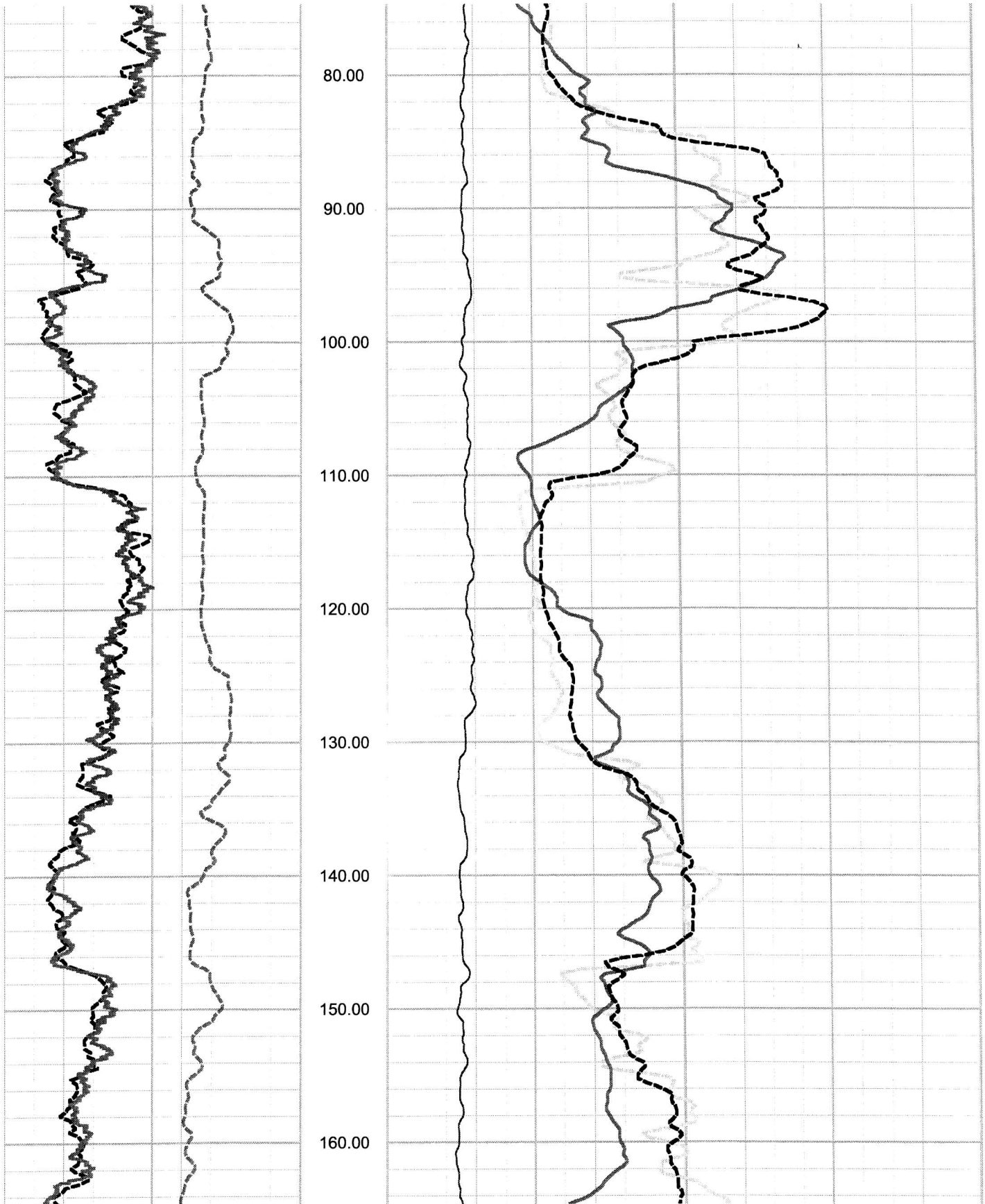
0.00	NGAM API Cs.	100.00
<hr/>		
0.00	SP Millivolt	250.00
<hr/>		
0.00	CGAM API Cs.	100.00

0.00	SPR Ohm	100.00
<hr/>		
0.00	LON Ohm M.	50.00
<hr/>		
-10.00	SHN Ohm M.	50.00
<hr/>		
2.00	CALP Inch	22.00

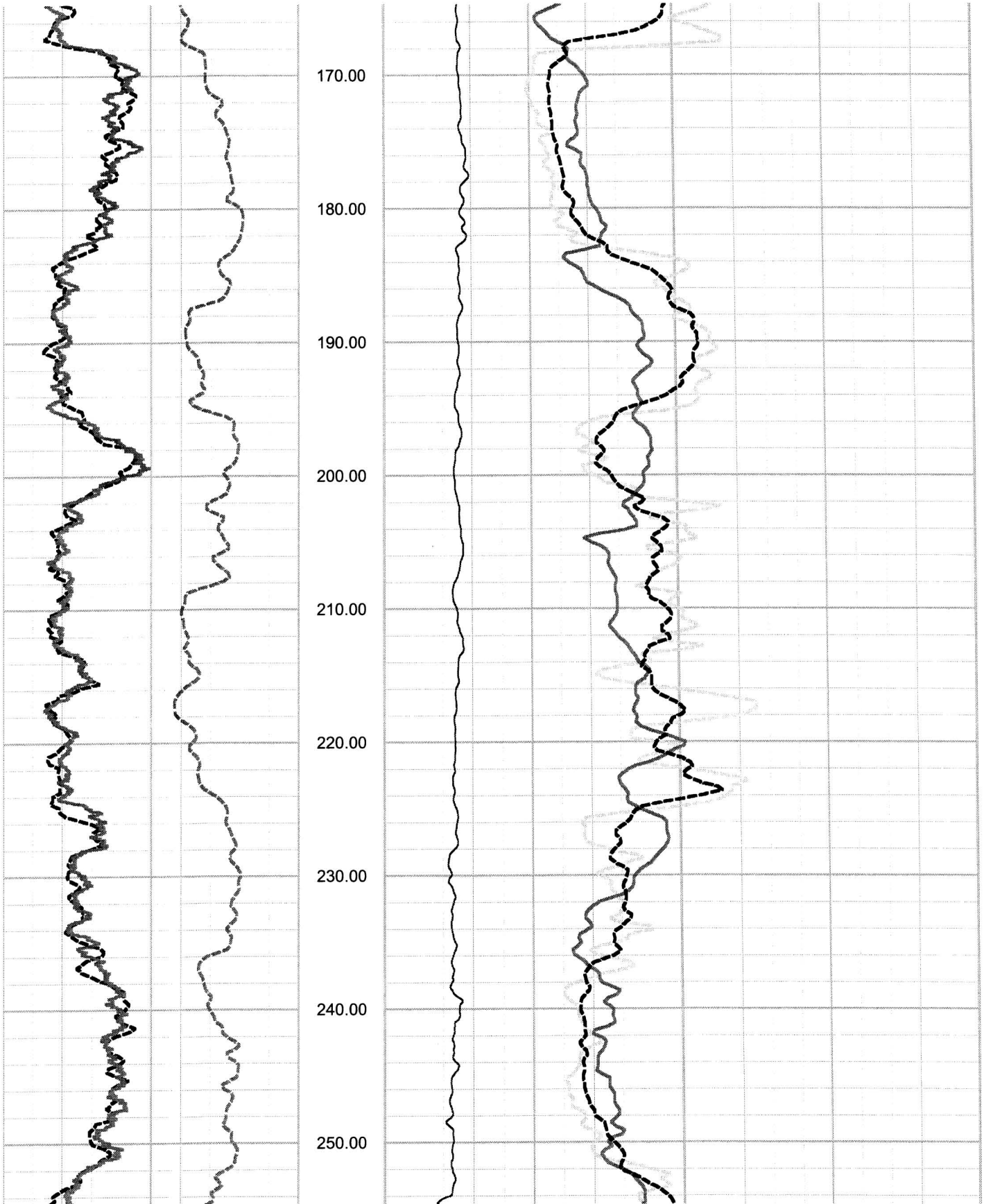
Depth (ft)



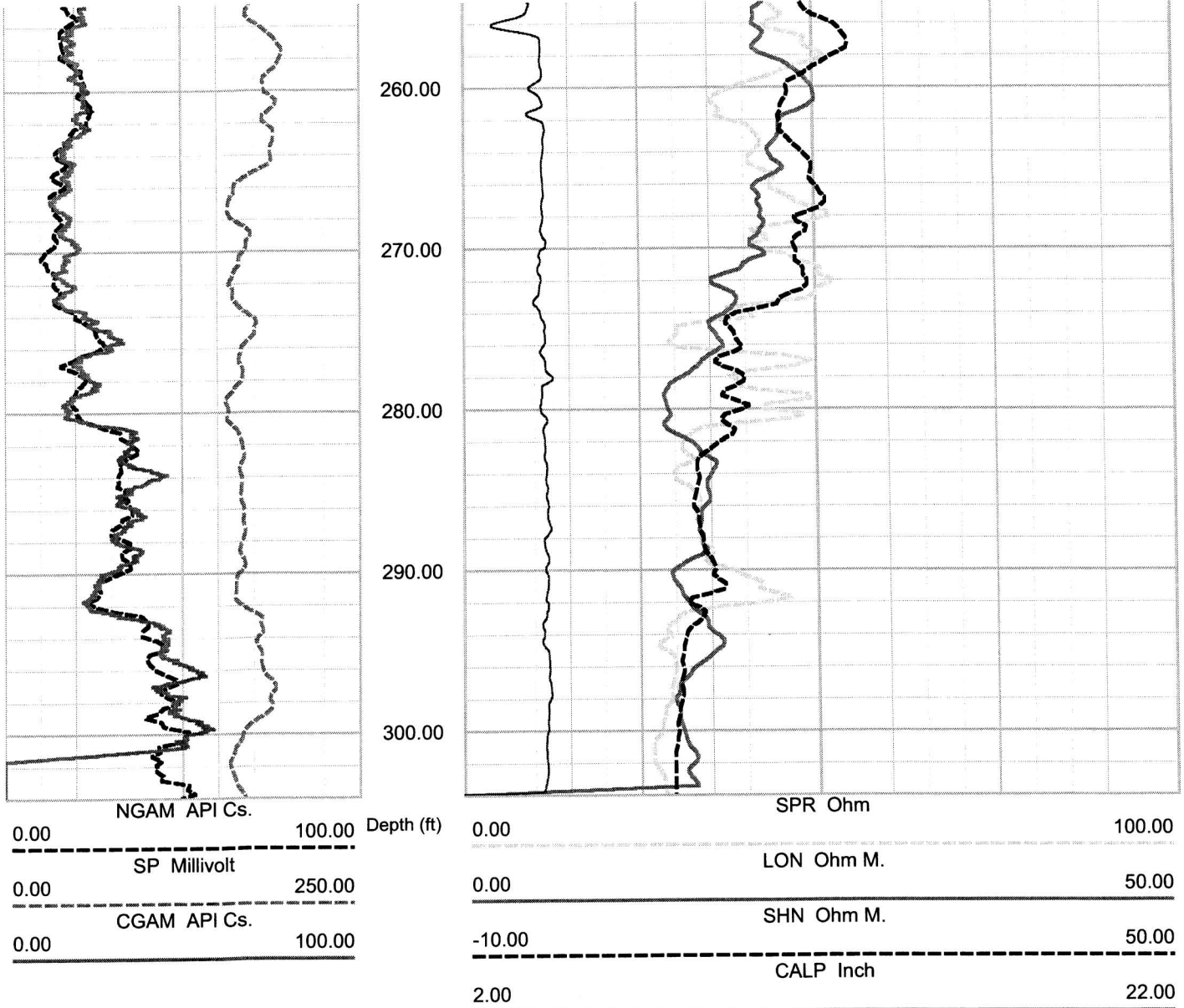
Victoria County Boring B-11 ELOG, Caliper and Natural Gamma rev 1 Sheet 2 of 5



Victoria County Boring B-11 ELOG, Caliper and Natural Gamma rev 1 Sheet 3 of 5



Victoria County Boring B-11 ELOG, Caliper and Natural Gamma rev 1 Sheet 4 of 5





VICTORIA

B12ELOGUP01

COMPANY GEOVISION
WELL B-12
FIELD
COUNTRY
STATE
COUNTY
LAT.:
LONG.:

OTHER SERVICES

Perm. Da..
Log. Da..
Drill Datum

Elev

KB 0.00
DF 0.00
GL 0.00

DATE	24 Oct 07	15 Dec 06	15 Dec 06
RUN#	1	0	0
TYPE OF LOG	ELOG		
DEPTH DRILLER	310.00	0.00	0.00
DEPTH LOGGER	310.00	0.00	0.00
LOG DEEPEST	300.00	0.00	0.00
LOG SHALLOW	40.00	0.00	0.00
FLUID IN HOLE	DRILLING MUD		
SALINITY			
DENSITY			
LEVEL			
MAX TEMP °C	0.00	0.00	0.00
RIG TIME			
RECORDED BY	C. CARTER		
WITNESSED BY			

RUN#	BIT RECORD			CASING RECORD			
	SIZE	FROM	TO	SIZE	WEIGHT	FROM	TO
1	5.00	0.00	0.00	0.00	0.00	0.00	0.00
0	0.00	0.00	0.00	0.00	0.00	0.00	0.00
0	0.00	0.00	0.00	0.00	0.00	0.00	0.00

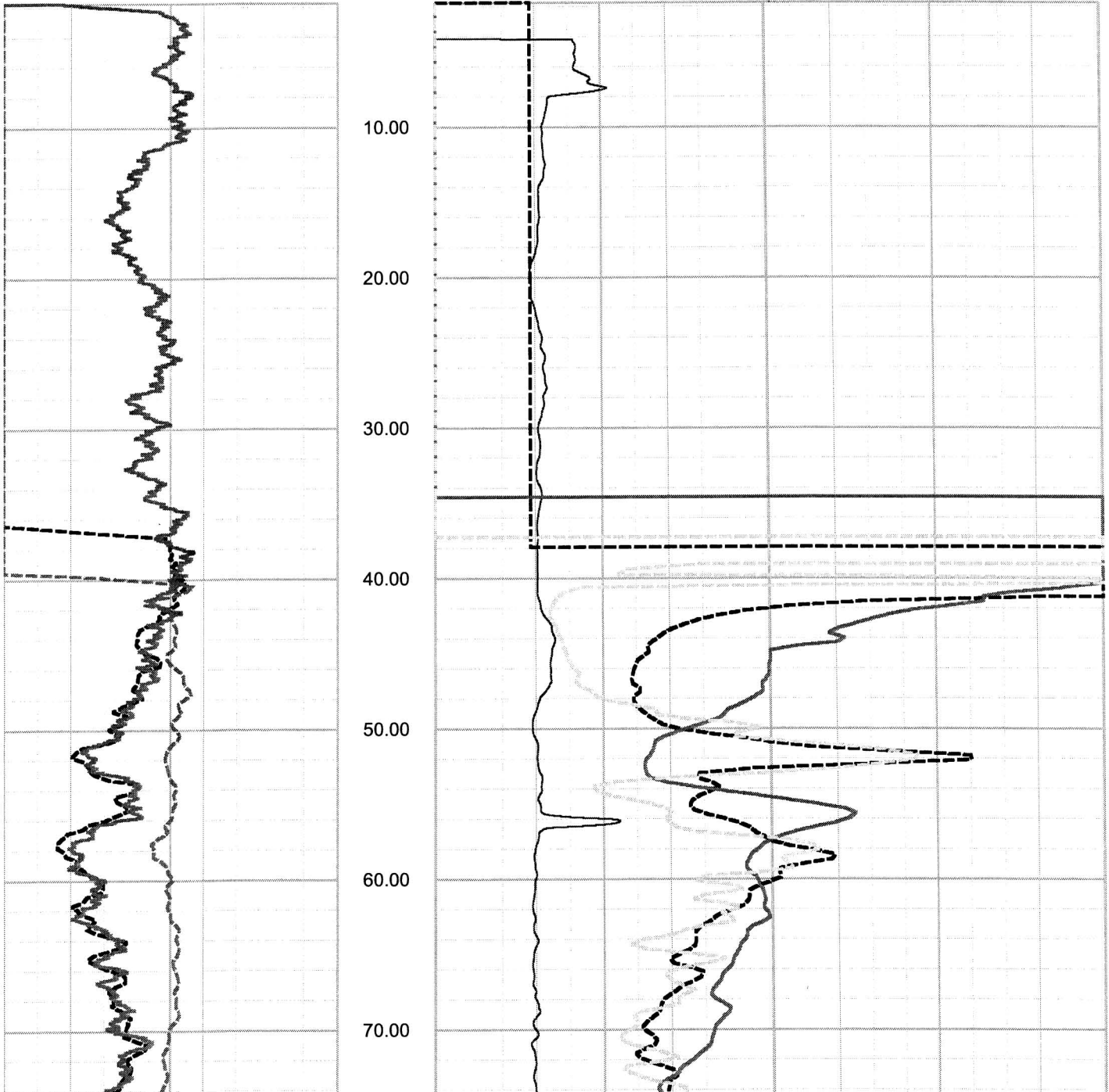
ROBERTSON GEOLOGGING TECHNOLOGY

REMARKS (C:\Data\7501 MACTEC Victoria County\B-12\E..

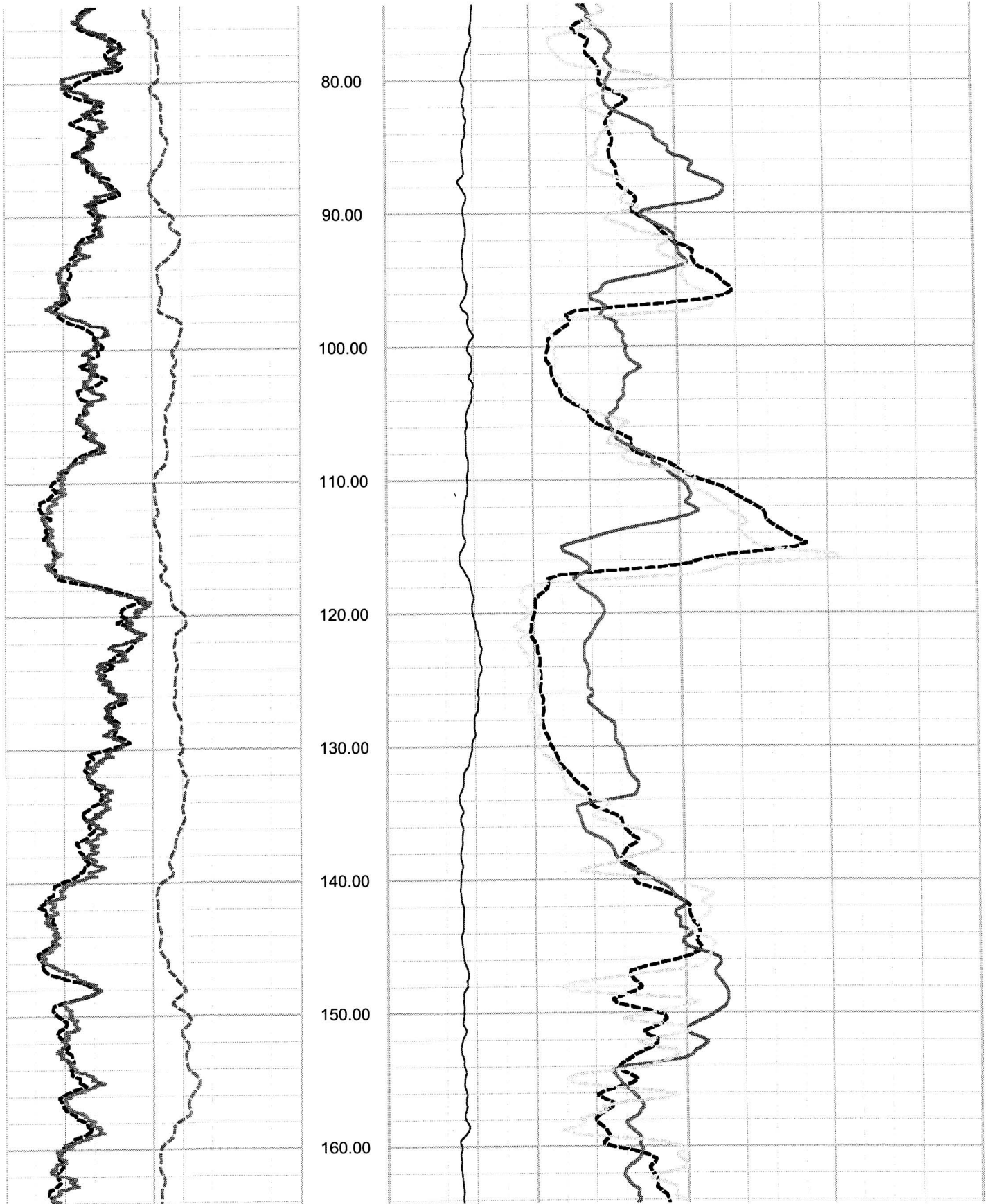
0.00	NGAM API Cs.	100.00
<hr/>		
0.00	SP Millivolt	250.00
<hr/>		
0.00	CGAM API Cs.	100.00

2.00	CALP Inch	22.00
<hr/>		
-10.00	SHN Ohm M.	60.00
<hr/>		
0.00	LON Ohm M.	50.00
<hr/>		
0.00	SPR Ohm	100.00

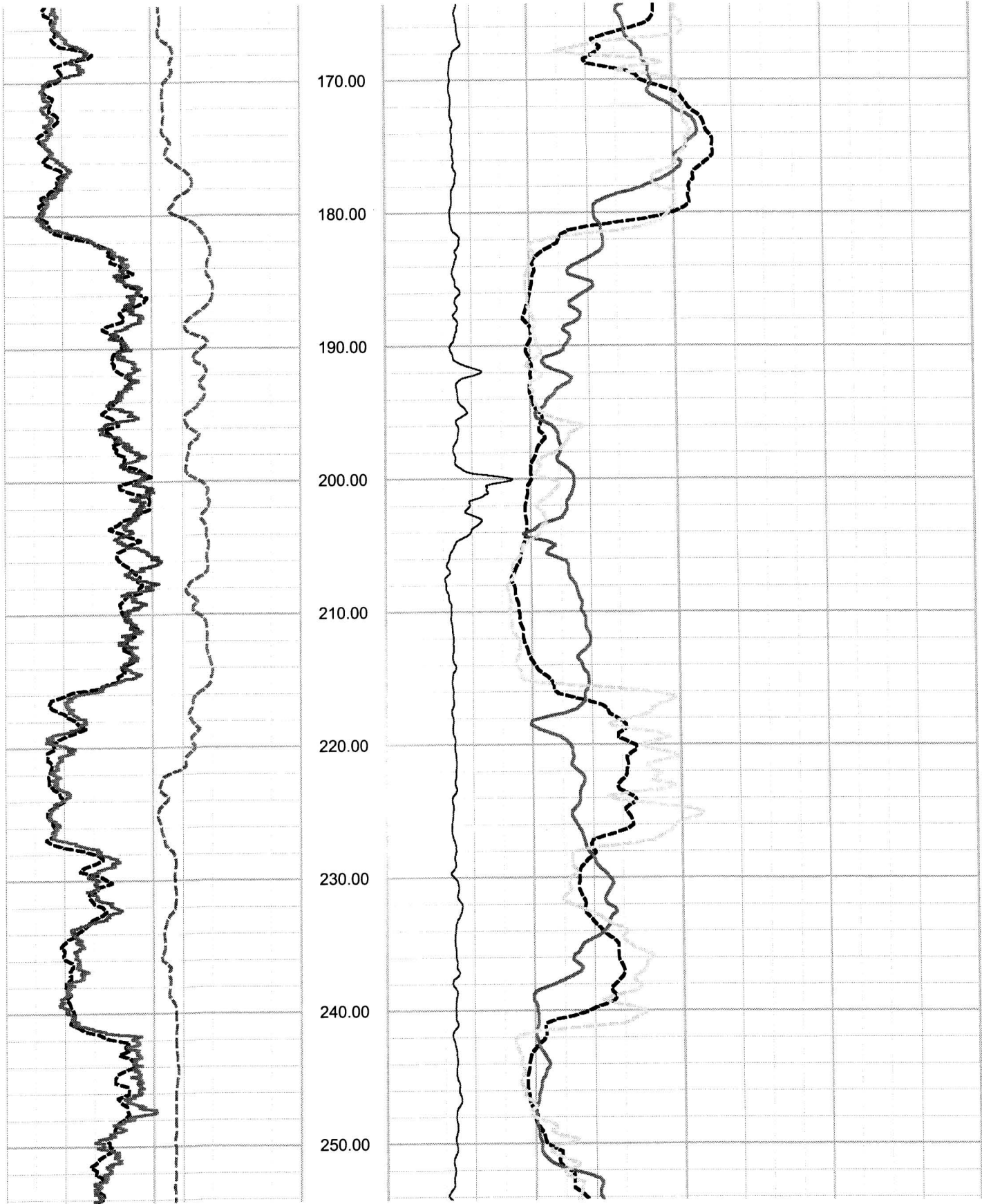
Depth (ft)



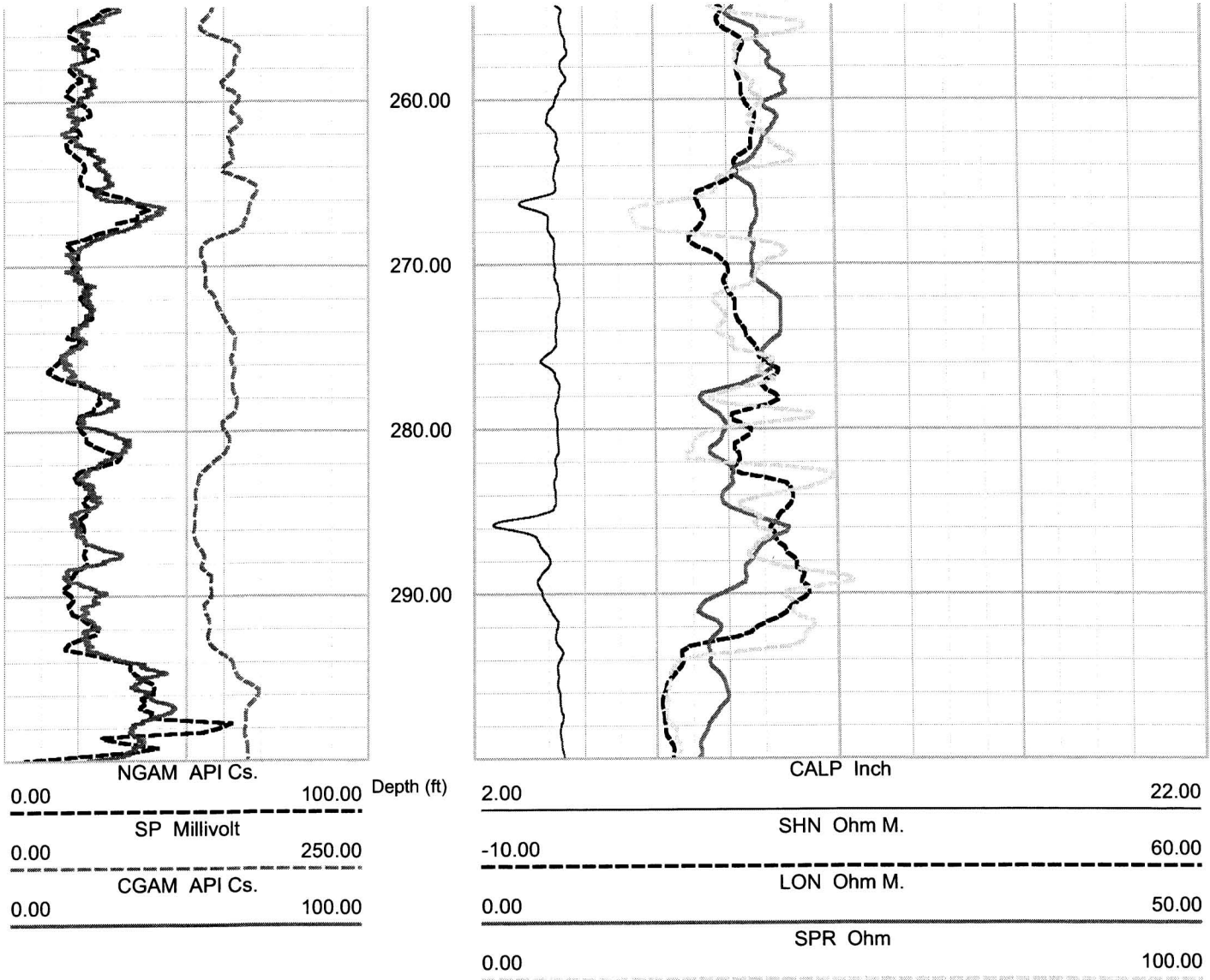
Victoria County Boring B-12 ELOG, Caliper and Natural Gamma rev 1 Sheet 2 of 5



Victoria County Boring B-12 ELOG, Caliper and Natural Gamma rev 1 Sheet 3 of 5



Victoria County Boring B-12 ELOG, Caliper and Natural Gamma rev 1 Sheet 4 of 5





VICTORIA

B2162A OFFSET

COMPANY GEOVISION
WELL B-2162A OFFSET
FIELD
COUNTRY
STATE
COUNTY
LAT.:
LONG.:

OTHER SERVICES

Perm. Da..	Elev	KB	0.00
Log. Da..		DF	0.00
Drill Datum		GL	0.00

DATE	14 Nov 07	15 Dec 06	15 Dec 06
RUN#	1	0	0
TYPE OF LOG	ELOG		
DEPTH DRILLER	210.00	0.00	0.00
DEPTH LOGGER	210.00	0.00	0.00
LOG DEEPEST	210.00	0.00	0.00
LOG SHALLOW	40.00	0.00	0.00
FLUID IN HOLE	DRILLING MUD		
SALINITY			
DENSITY			
LEVEL			
MAX TEMP °C	0.00	0.00	0.00
RIG TIME			
RECORDED BY	C. CARTER		
WITNESSED BY			

RUN#	BIT RECORD			CASING RECORD			
	SIZE	FROM	TO	SIZE	WEIGHT	FROM	TO
1	5.88	0.00	619.50	4.00	0.00	0.00	88.00
0	0.00	0.00	0.00	0.00	0.00	0.00	0.00
0	0.00	0.00	0.00	0.00	0.00	0.00	0.00

ROBERTSON GEOLOGGING TECHNOLOGY

REMARKS (C:\Data\Victoria County\B-2162A OFFSET 14 ..