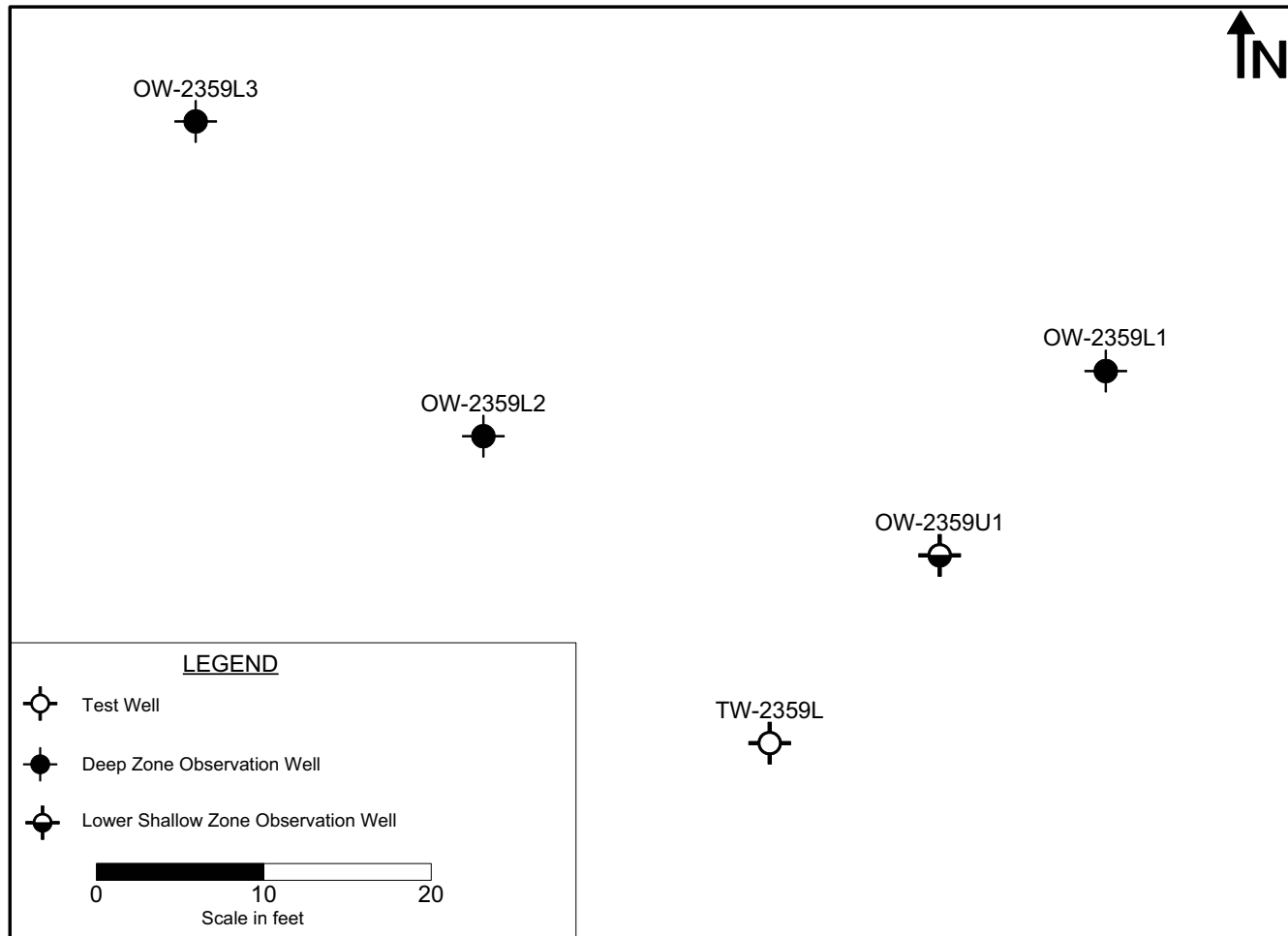


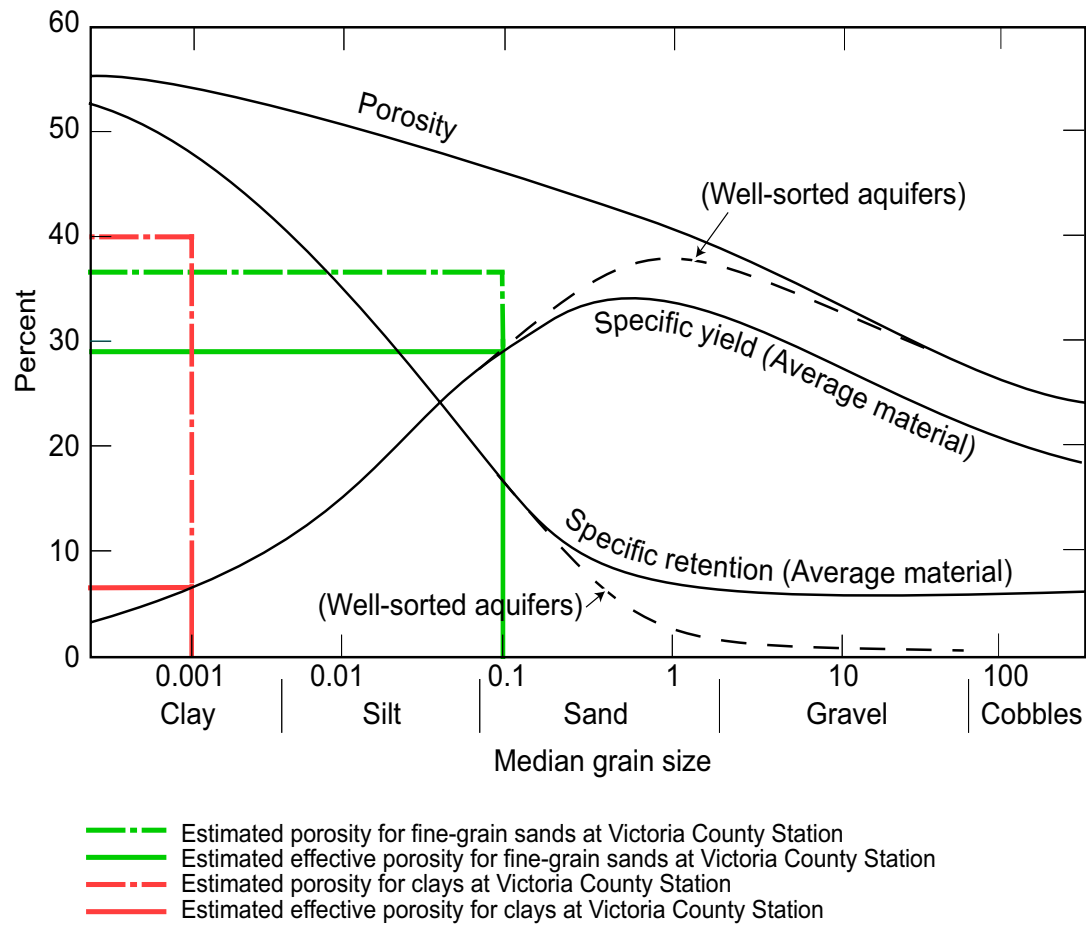
See [Figure 2.4.12-10](#) for site location of wells.

Figure 2.4.12-19 Well Location Plan for the TW-2320U Aquifer Pumping Test



See [Figure 2.4.12-10](#) for site location of wells.

Figure 2.4.12-20 Well Location Plan for the TW-2359L Aquifer Pumping Test



Source: [Table 2.4.12-10](#)

Modified from [Reference 2.4.12-18](#)

Figure 2.4.12-21 Relationship of Porosity, Specific Yield, and Specific Retention

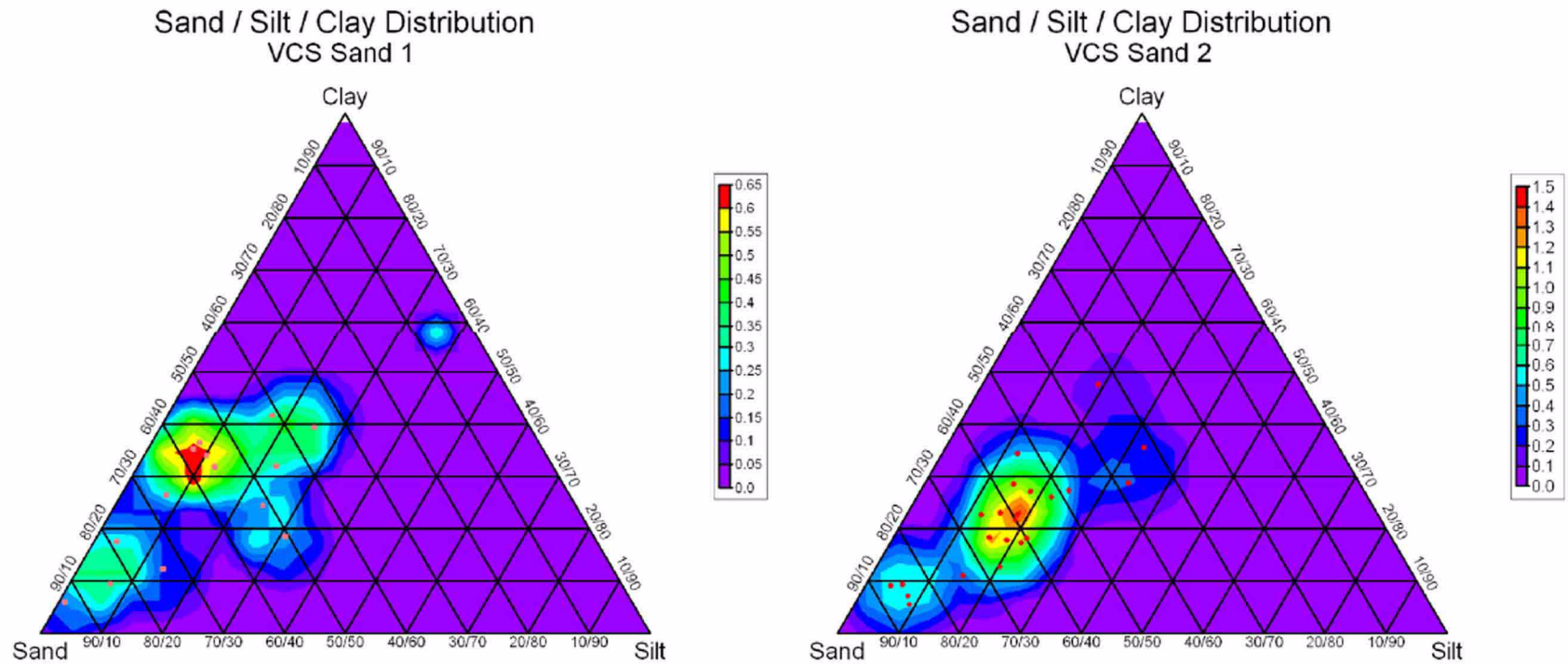


Figure 2.4.12-22 Grain Size Ternary Diagrams for VCS (Sheet 1 of 3)

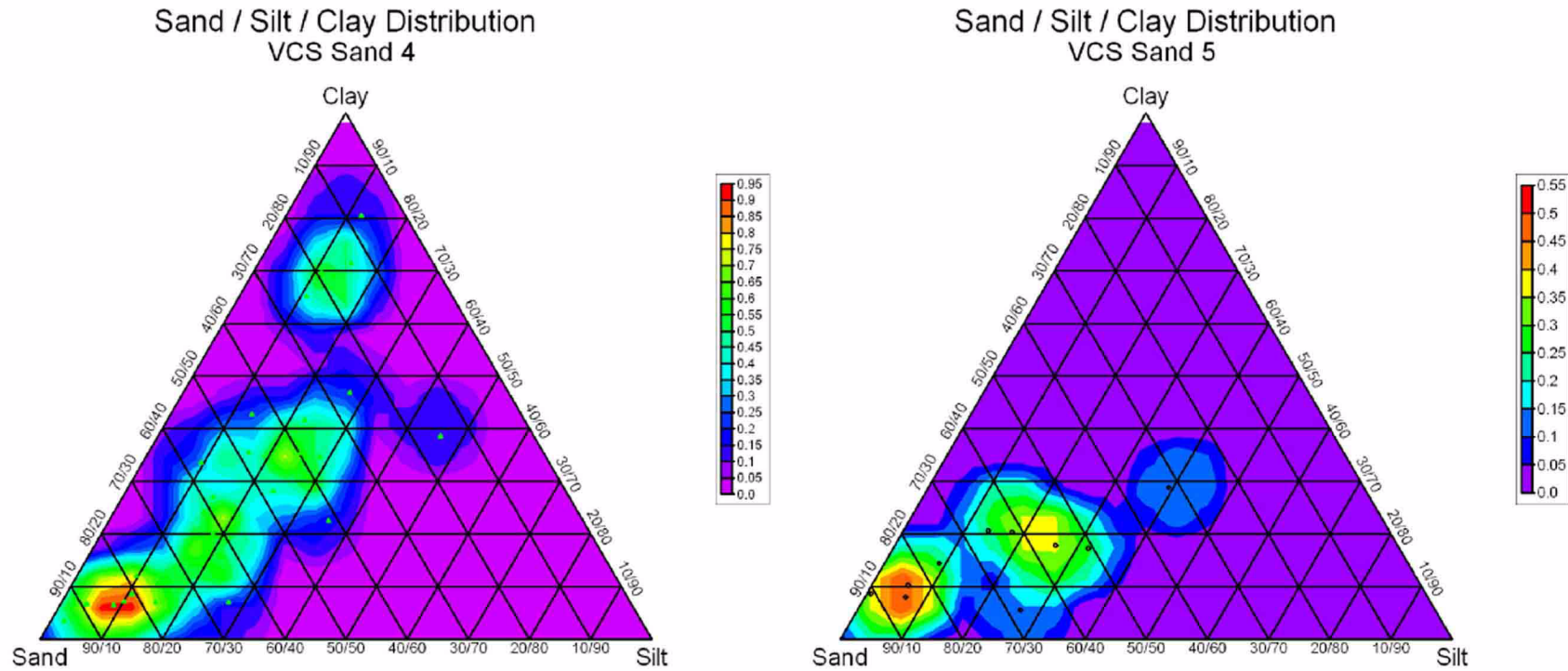


Figure 2.4.12-22 Grain Size Ternary Diagrams for VCS (Sheet 2 of 3)

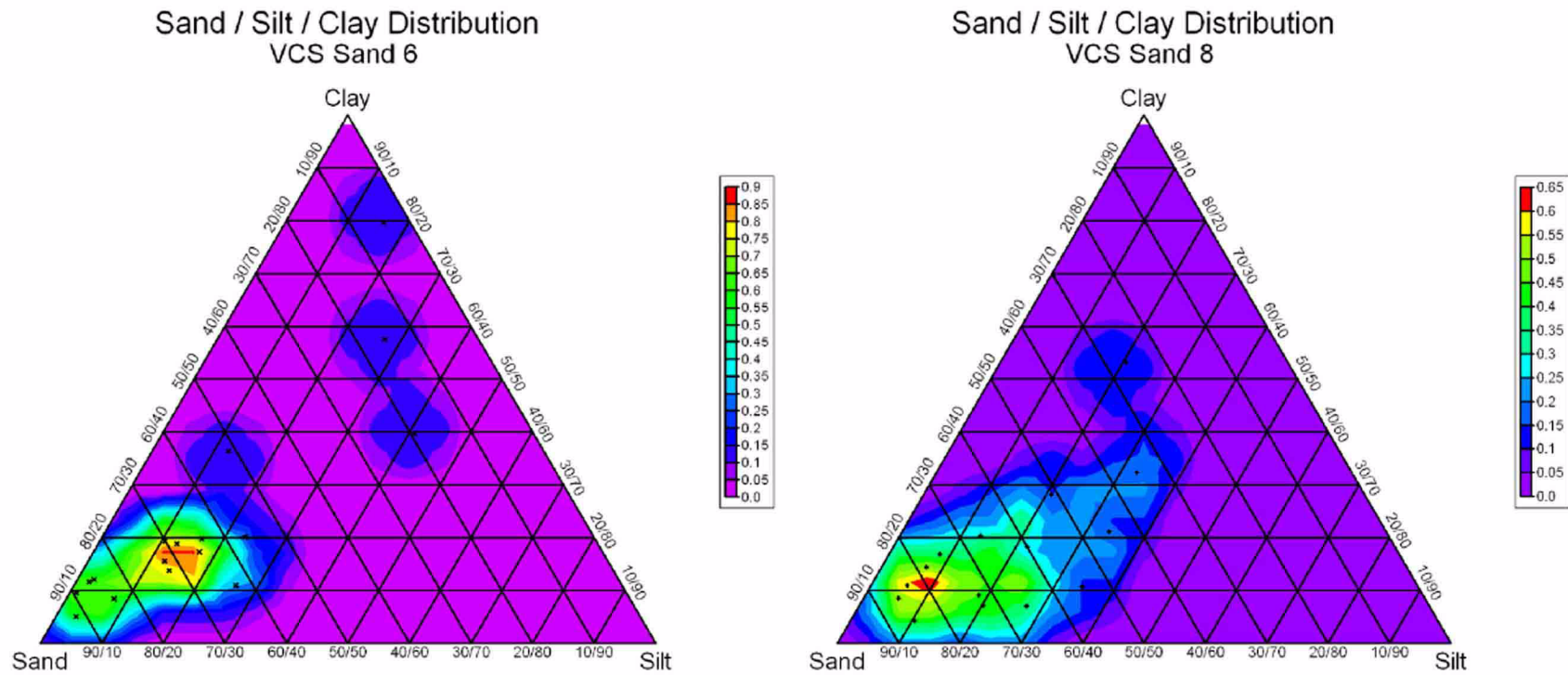


Figure 2.4.12-22 Grain Size Ternary Diagrams for VCS (Sheet 3 of 3)

Borehole Permeameter Test Results - Shallow (5 ft)

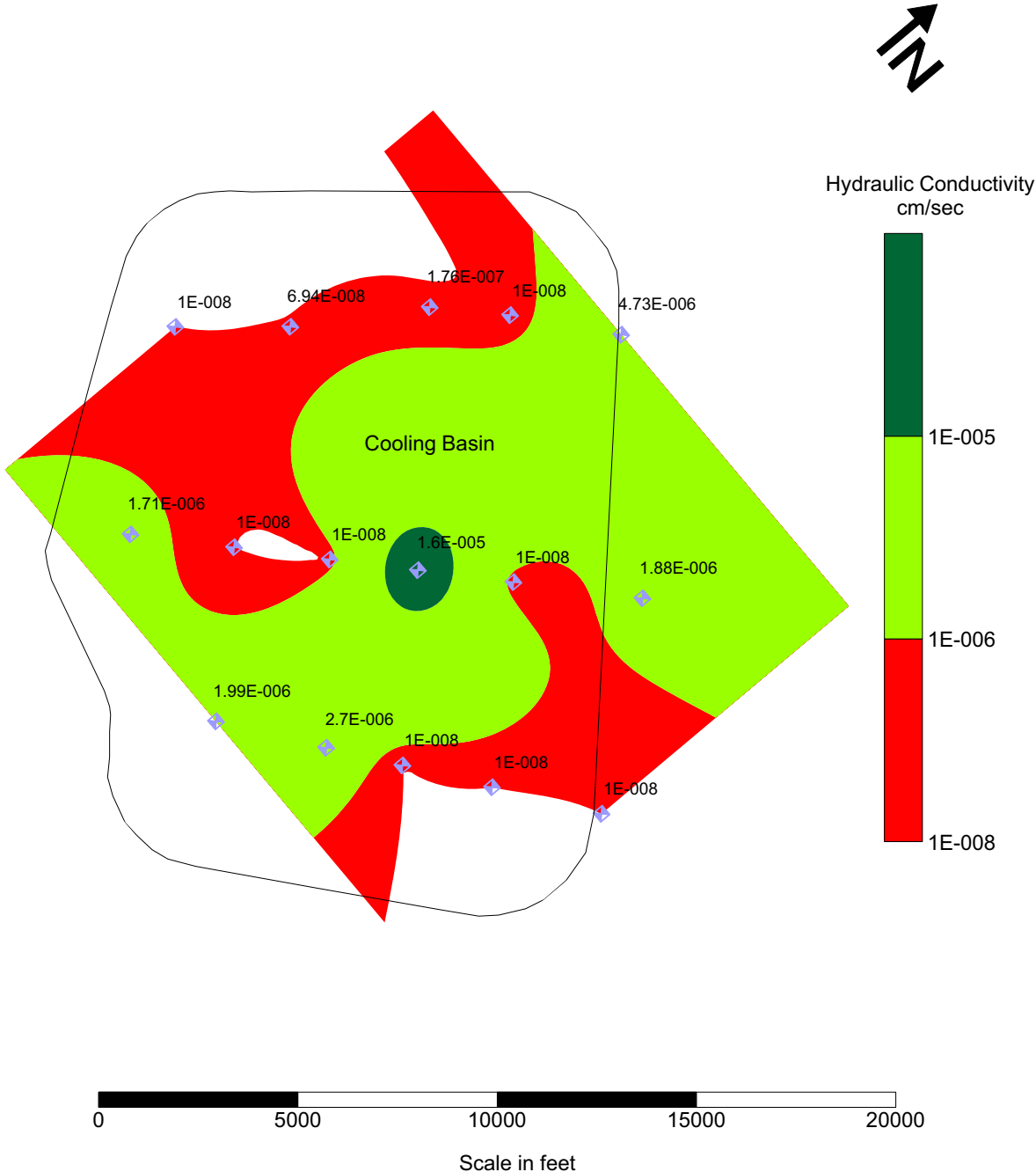


Figure 2.4.12-23 Borehole Permeameter Hydraulic Conductivity Contour Map (Sheet 1 of 2)

Borehole Permeameter Test Results - Deep (10 ft)

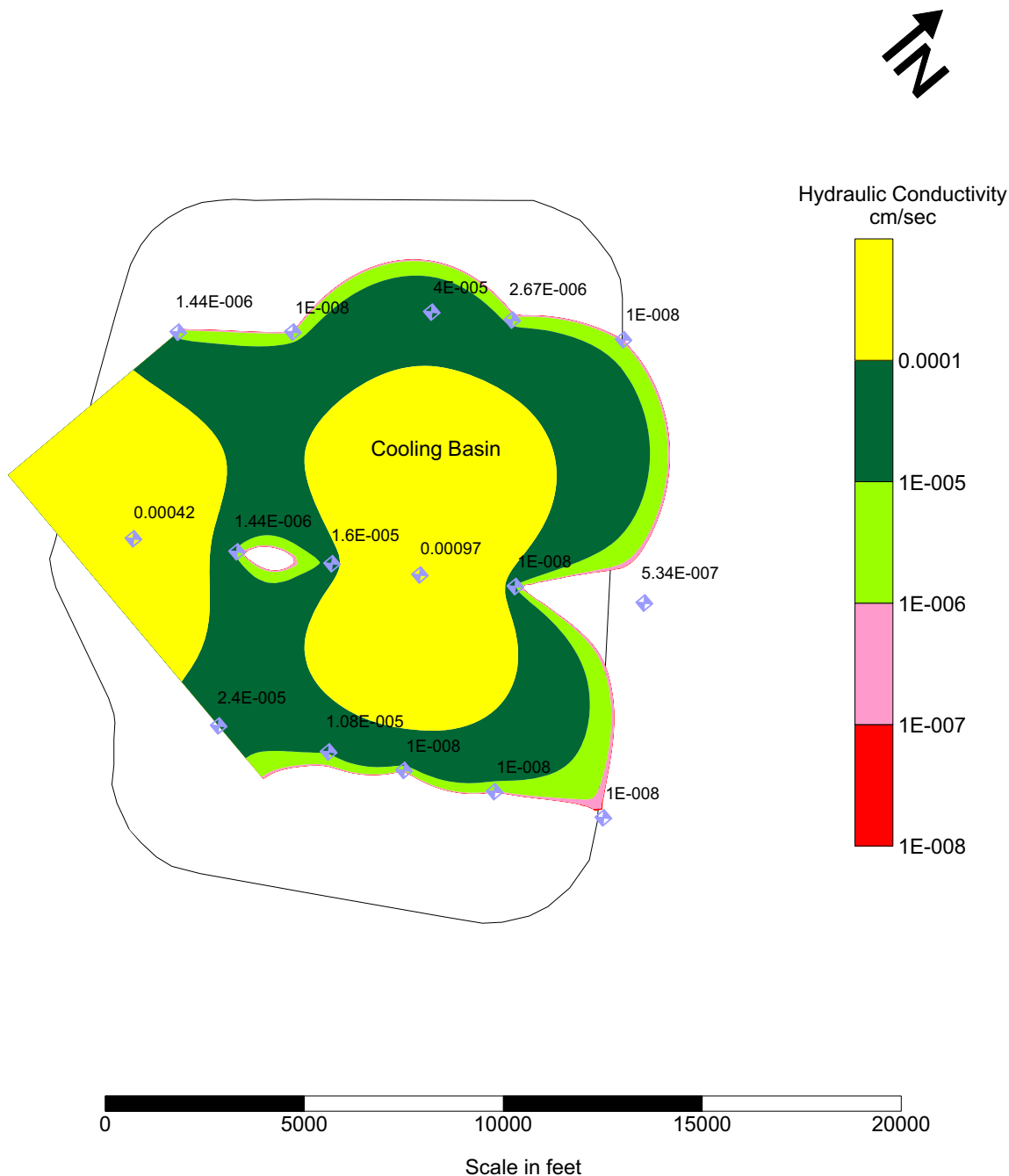


Figure 2.4.12-23 Borehole Permeameter Hydraulic Conductivity Contour Map (Sheet 2 of 2)

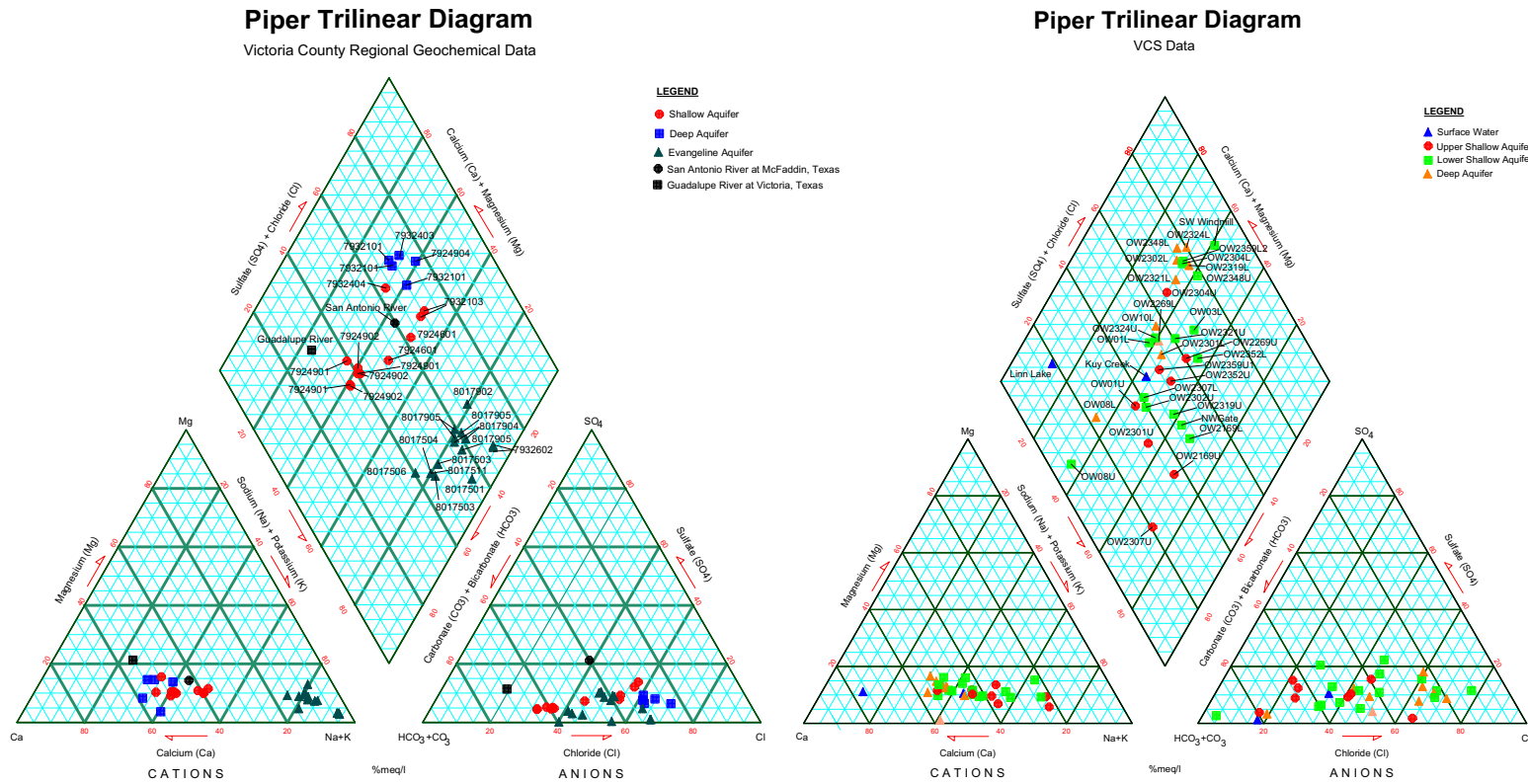
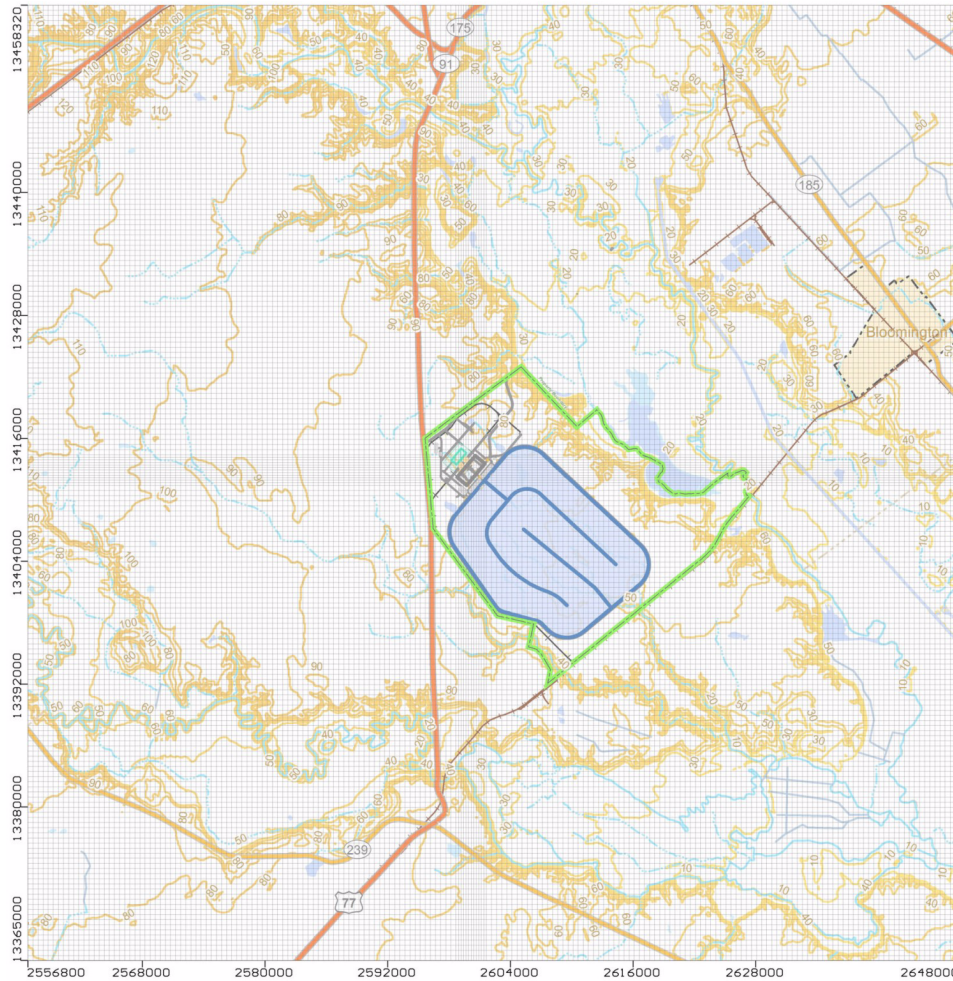


Figure 2.4.12-24 Trilinear Diagram of Hydrogeochemical Data



Note: Structures are representative of those that could be located at the site.

Figure 2.4.12-25 Plan View of Model Grid

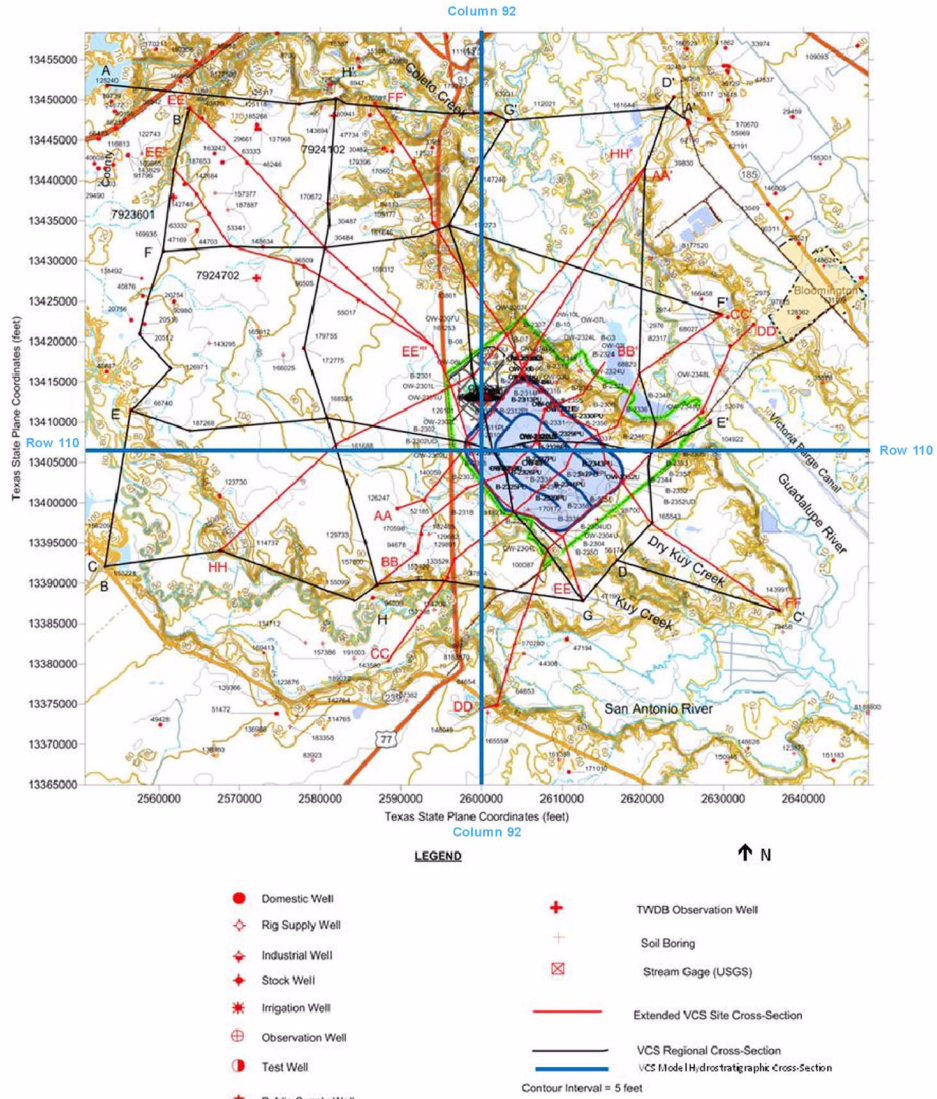


Figure 2.4.12-26a Plan View Showing Locations of Orthogonal Cross-Sections

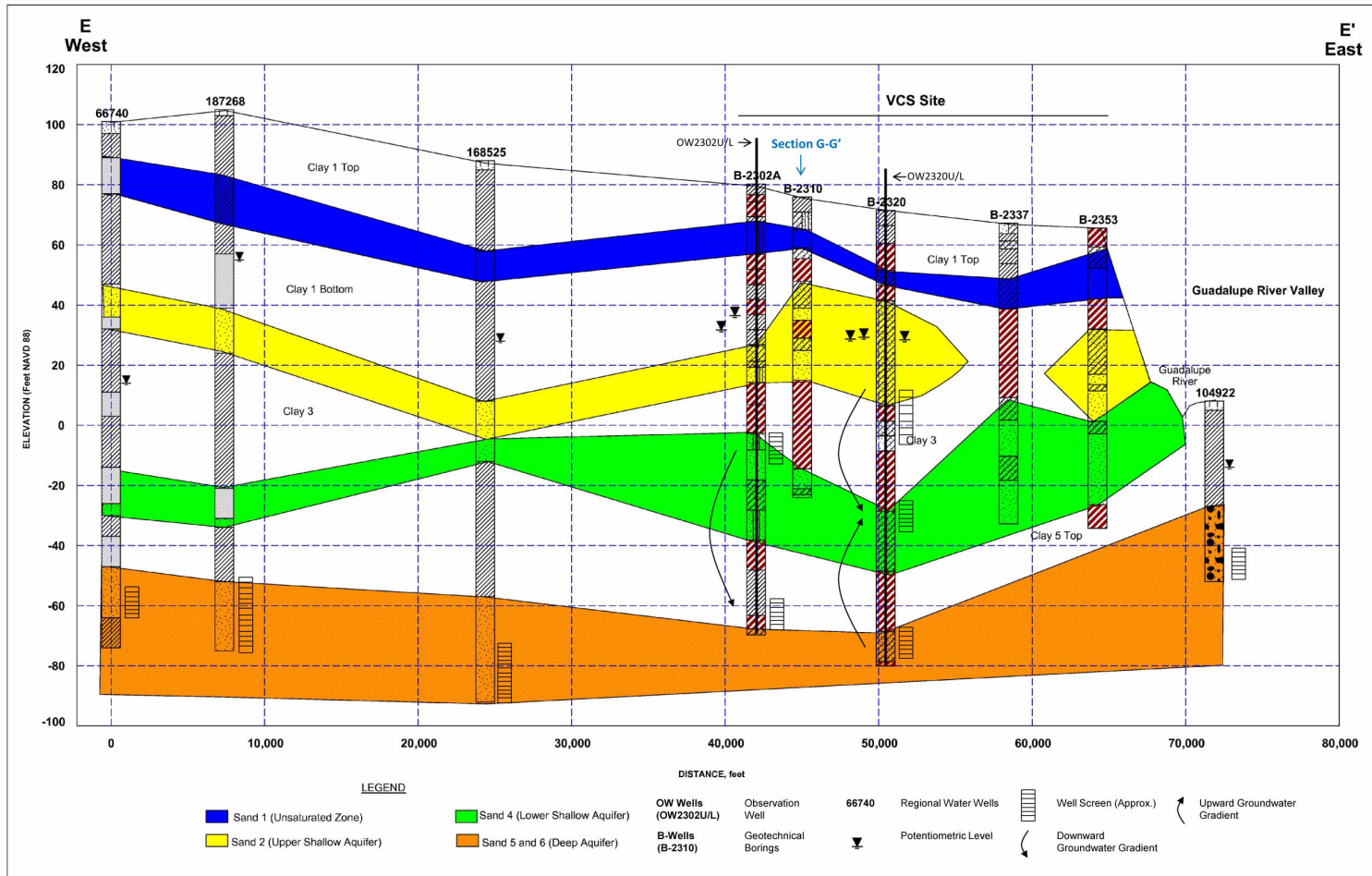


Figure 2.4.12-26b Hydrogeologic Cross-Section (E-E')

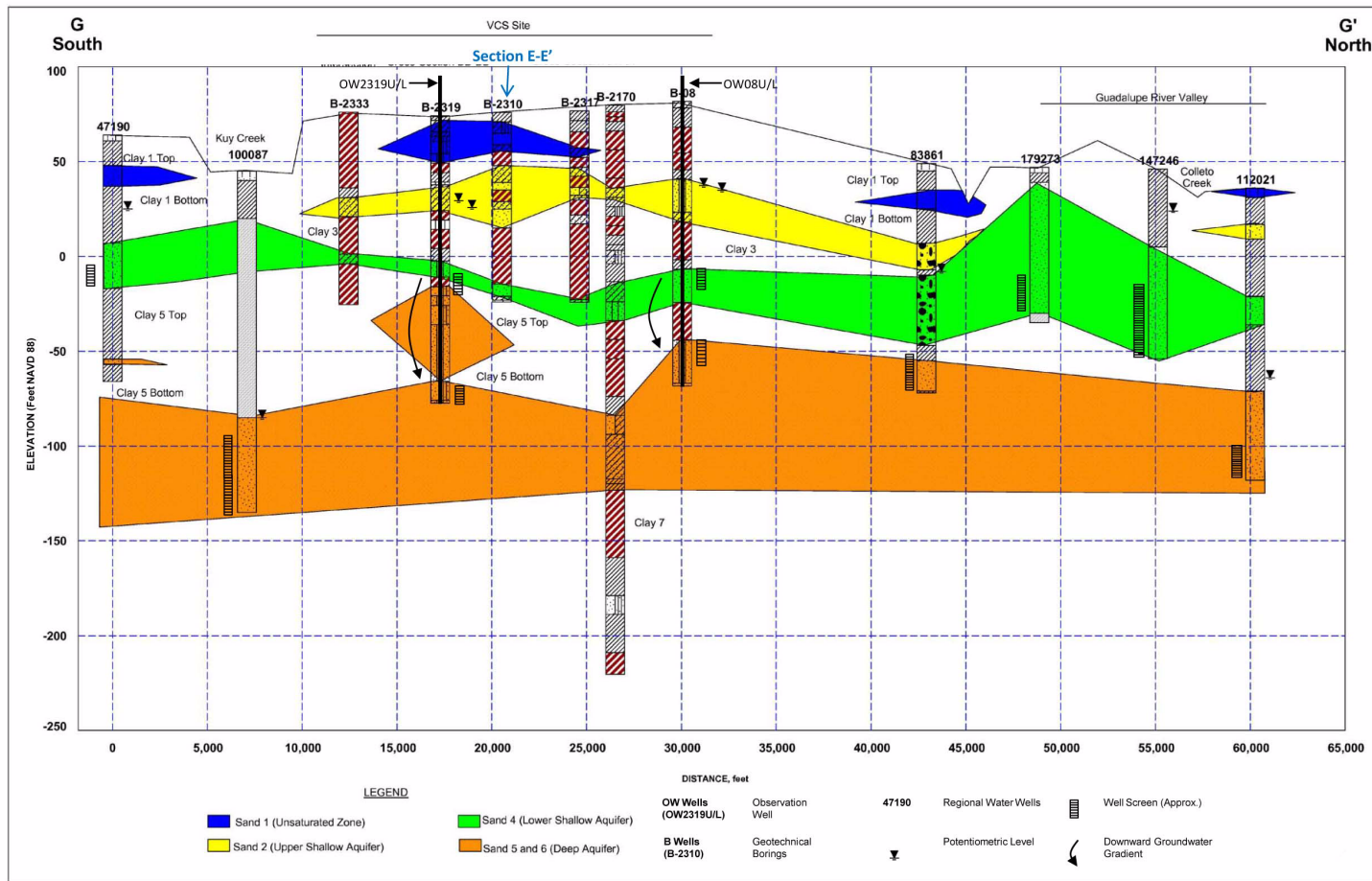


Figure 2.4.12-26c Hydrogeologic Cross-Section (G-G')

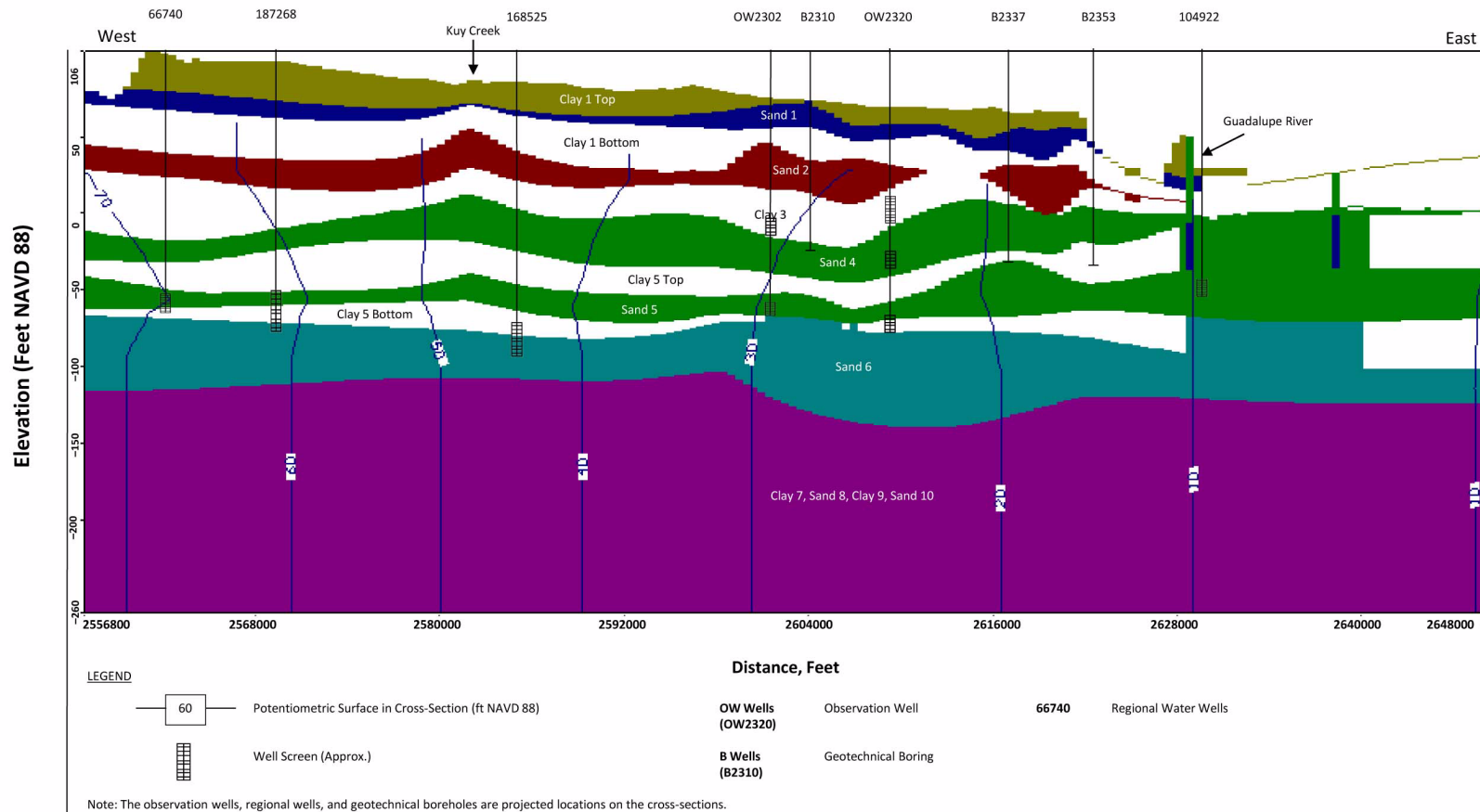


Figure 2.4.12-26d Cross-Section Along Row 110 of Groundwater Model Grid

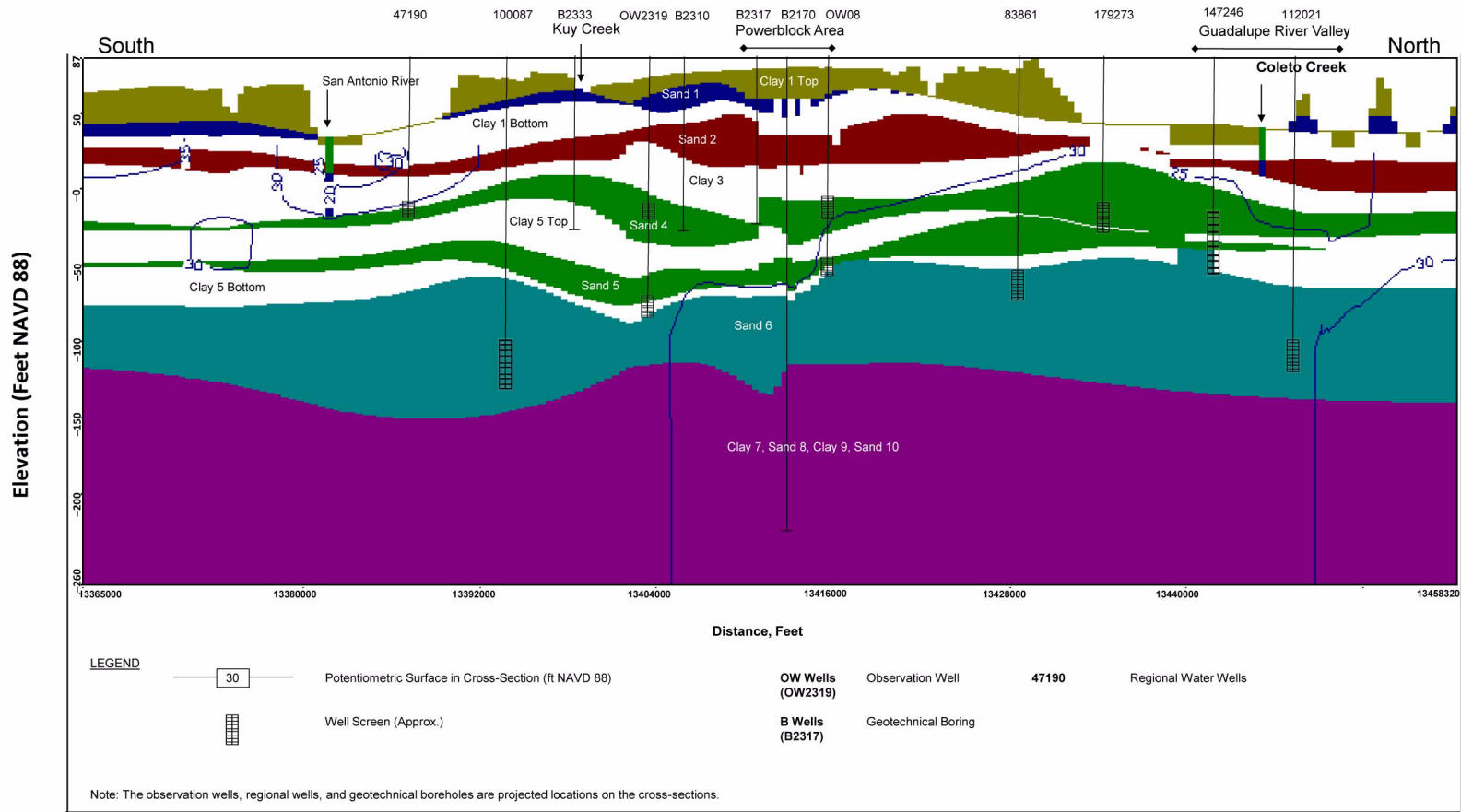


Figure 2.4.12-26e Cross-Section Along Column 92 of Groundwater Model Grid



Figure 2.4.12-27 Simulated Post-Construction Potentiometric Surface at the Power Block in Layer 2

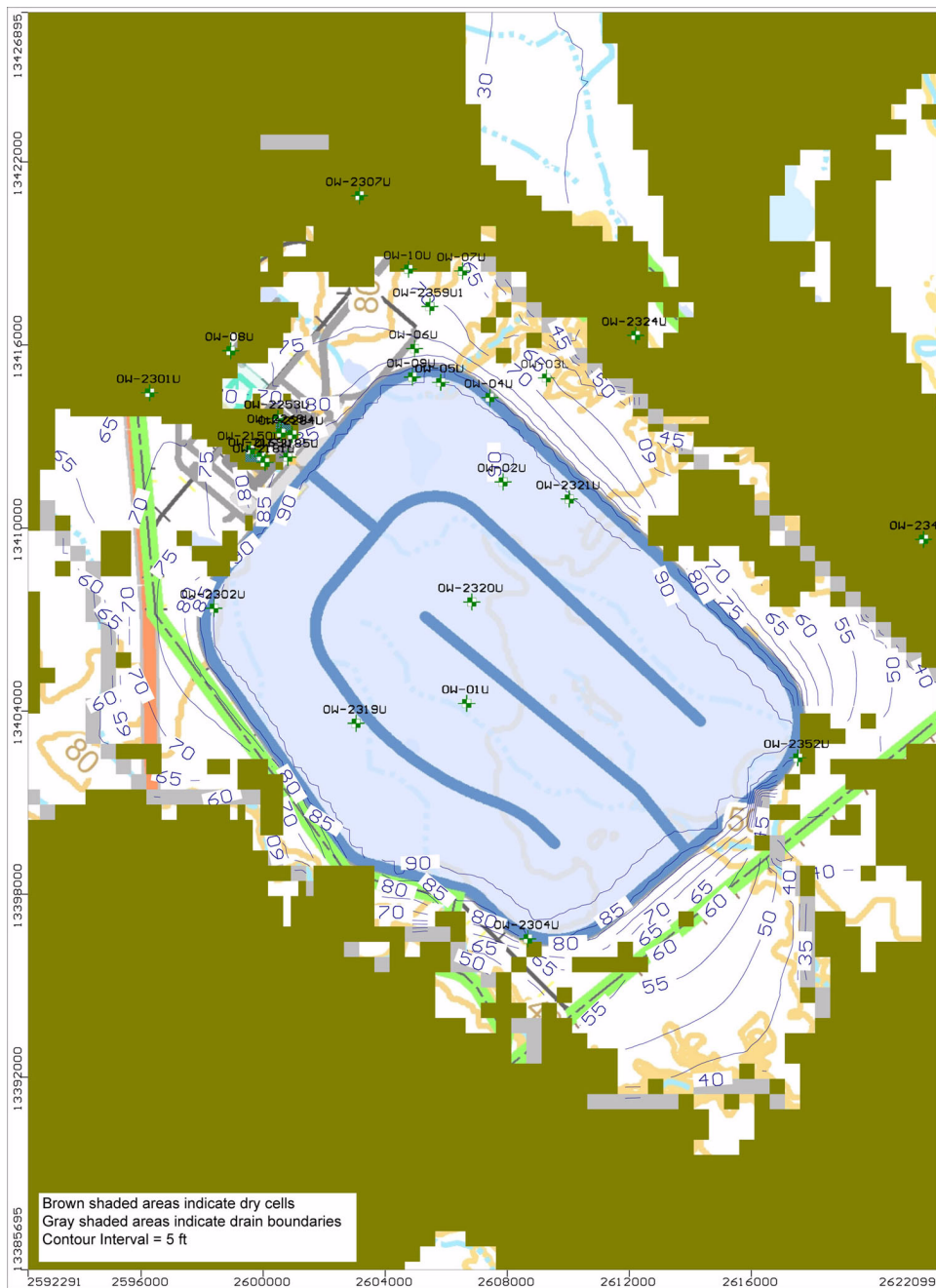


Figure 2.4.12-28 Simulated Post-Construction Potentiometric Surface at the Cooling Basin in Layer 2

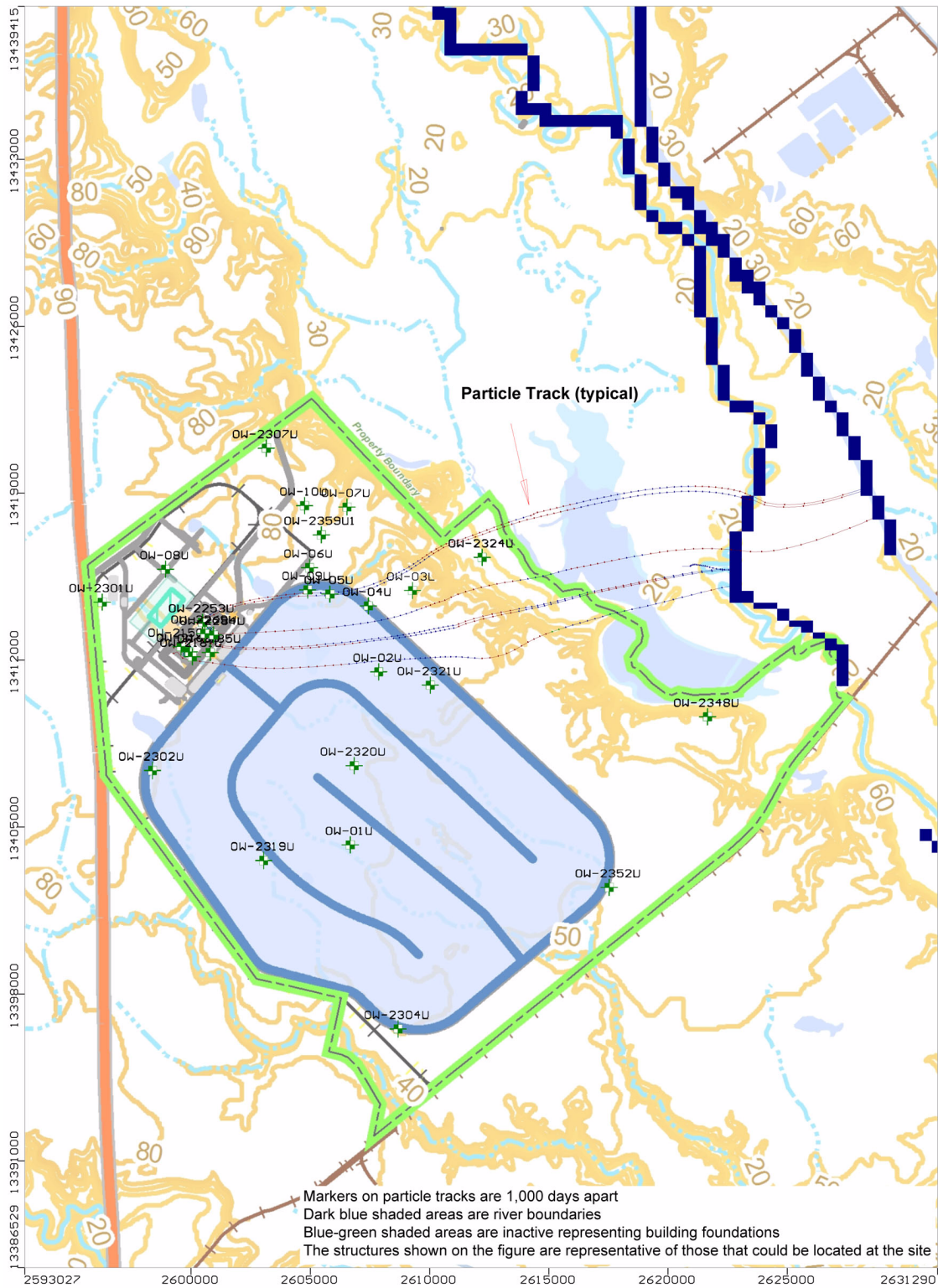


Figure 2.4.12-29 Particle Tracking Results for Accident Scenario 1 in Layer 6

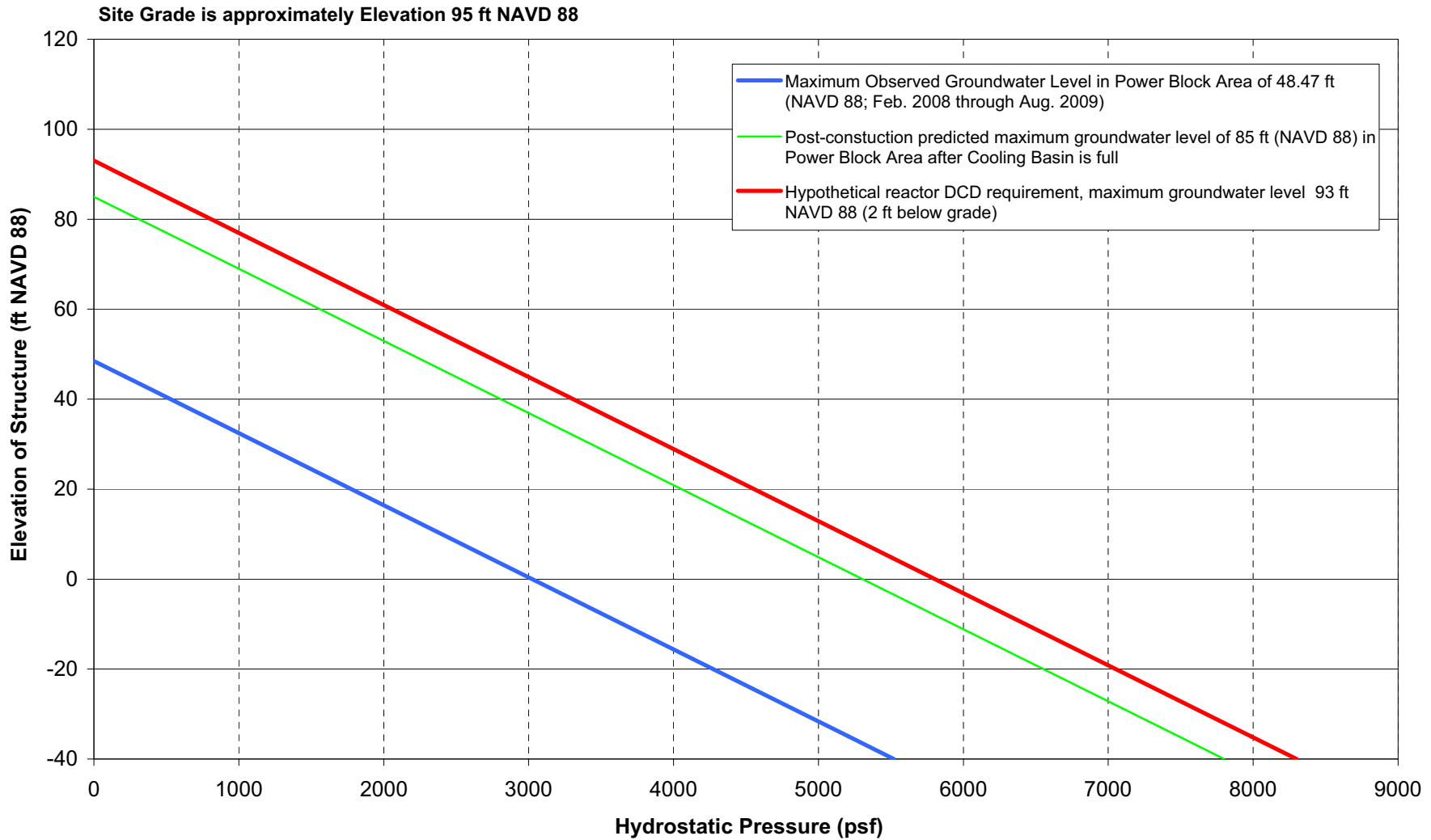


Figure 2.4.12-30 Subsurface Hydrostatic Loading

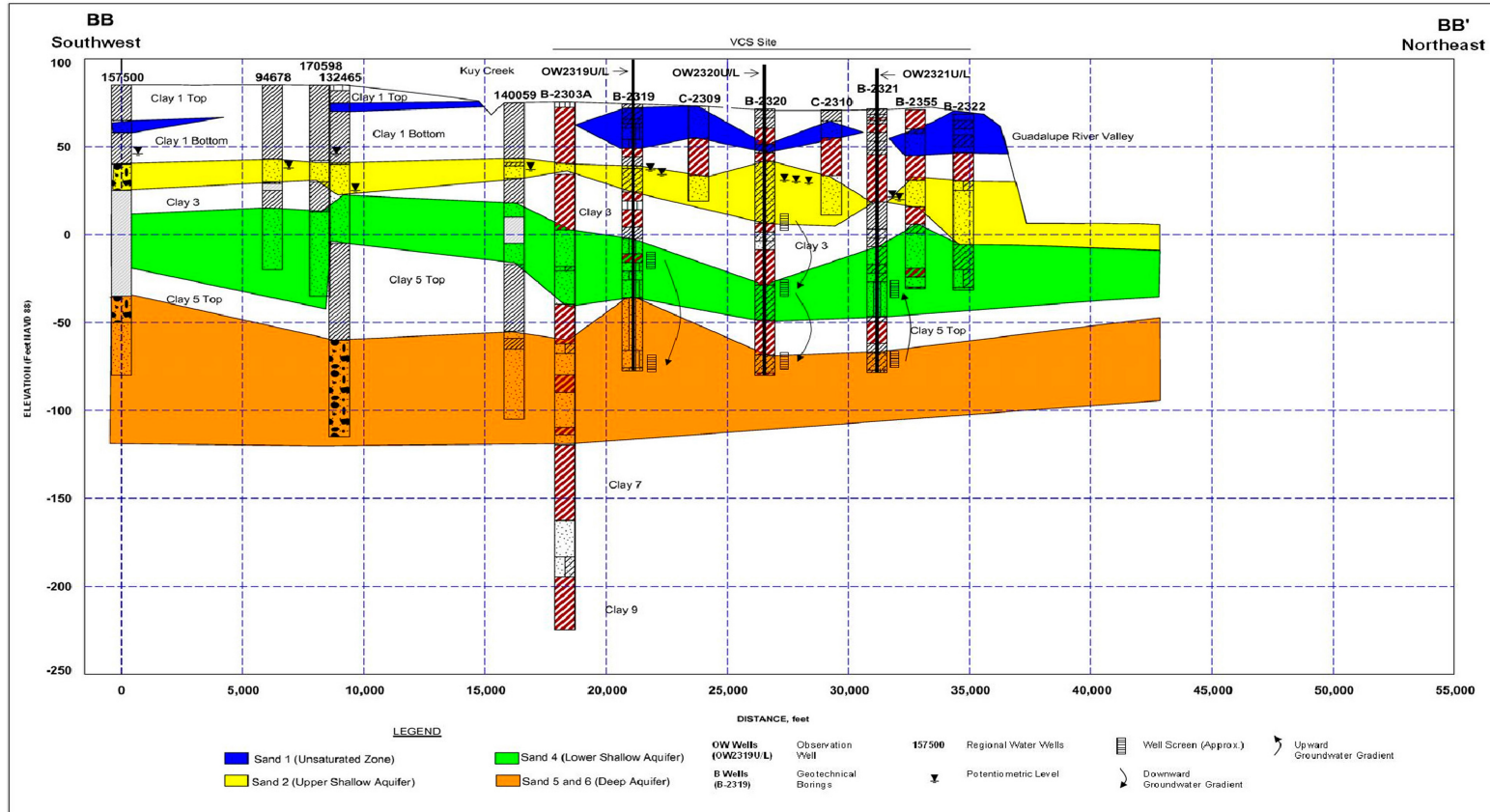


Figure 2.4.12-31 Hydrogeologic Cross-Section BB-BB'

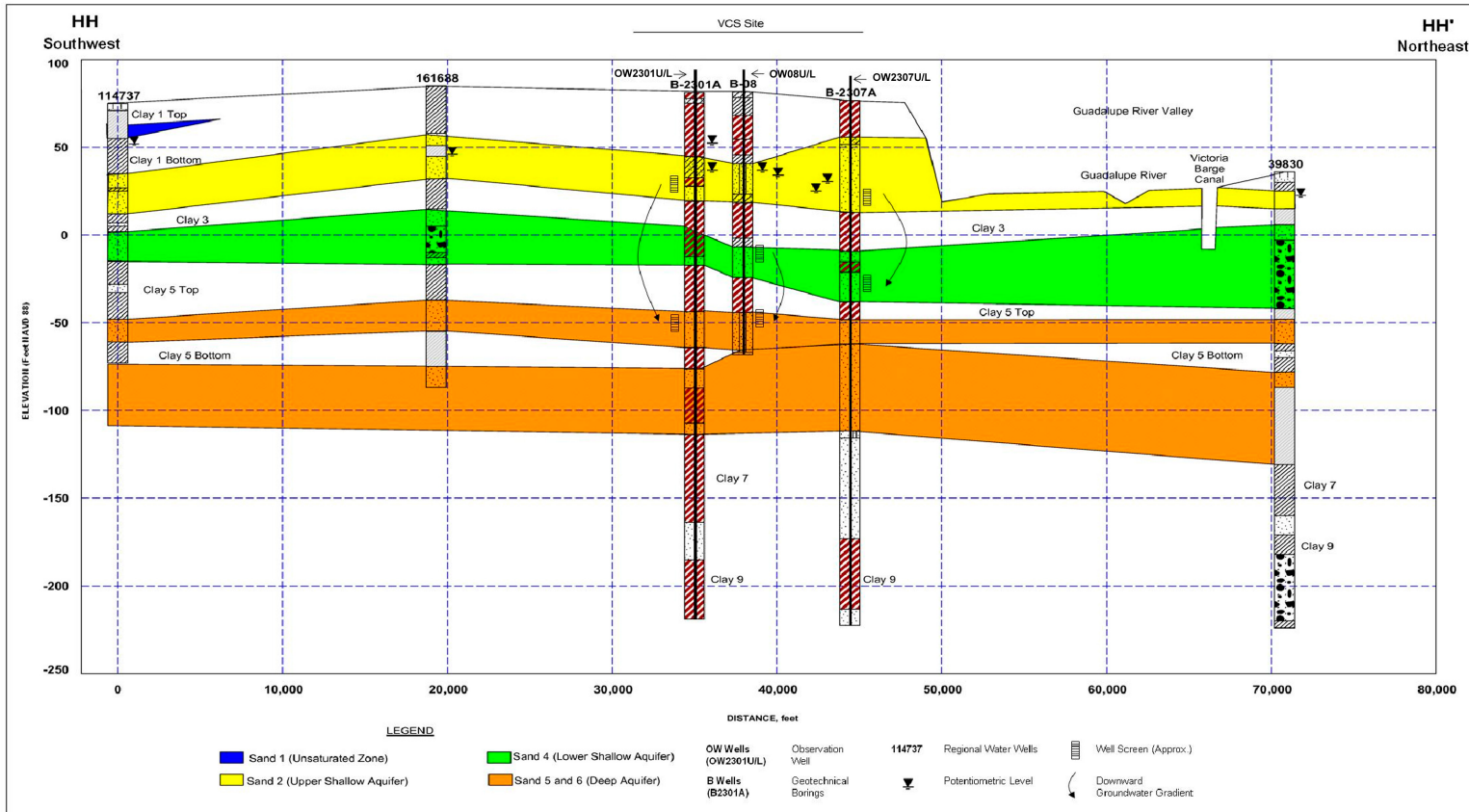


Figure 2.4.12-32 Hydrogeologic Cross-Section HH-HH'

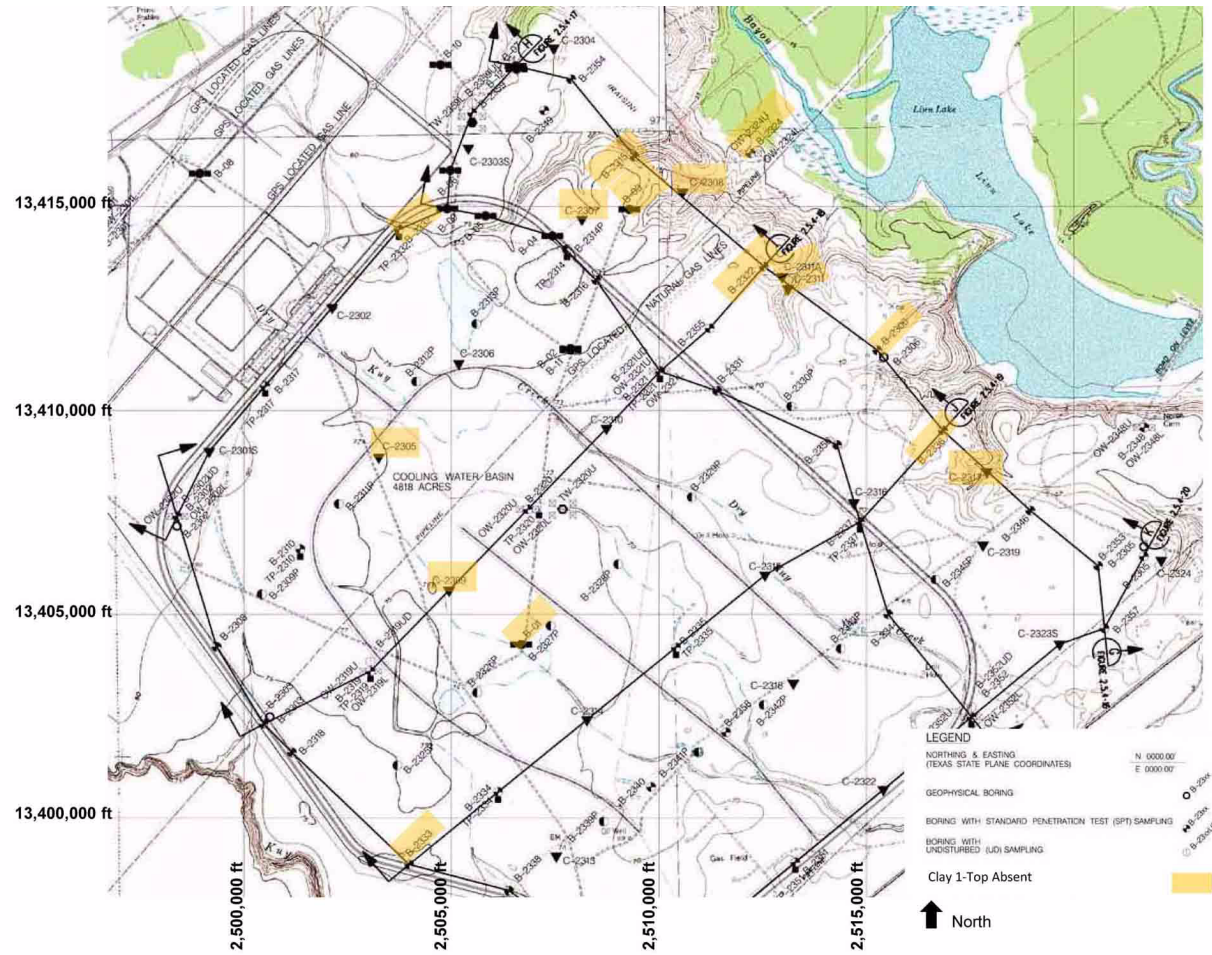


Figure 2.4.12-33 Locations Where Clay 1-Top Is Absent

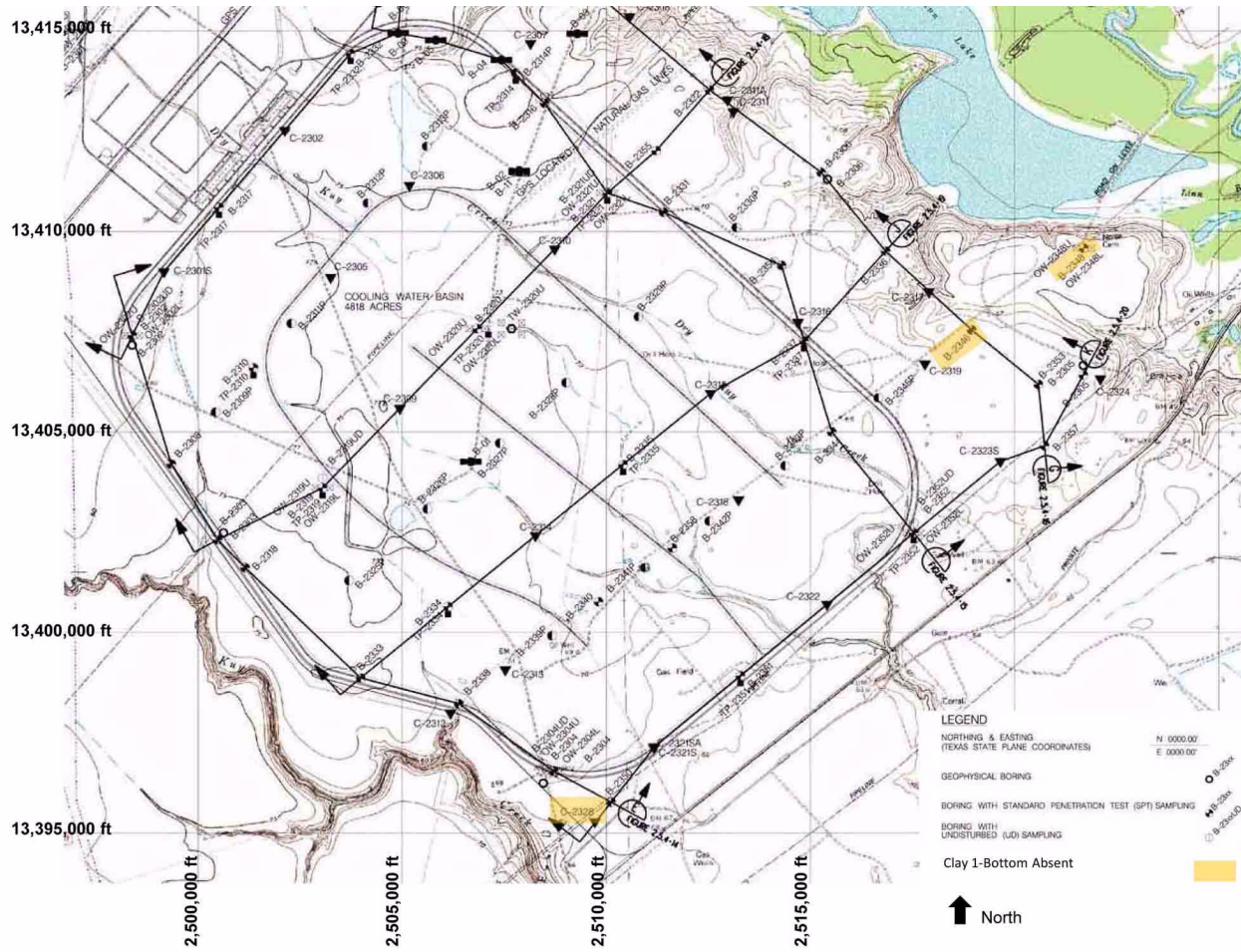


Figure 2.4.12-34 Locations Where Clay 1-Bottom Is Absent

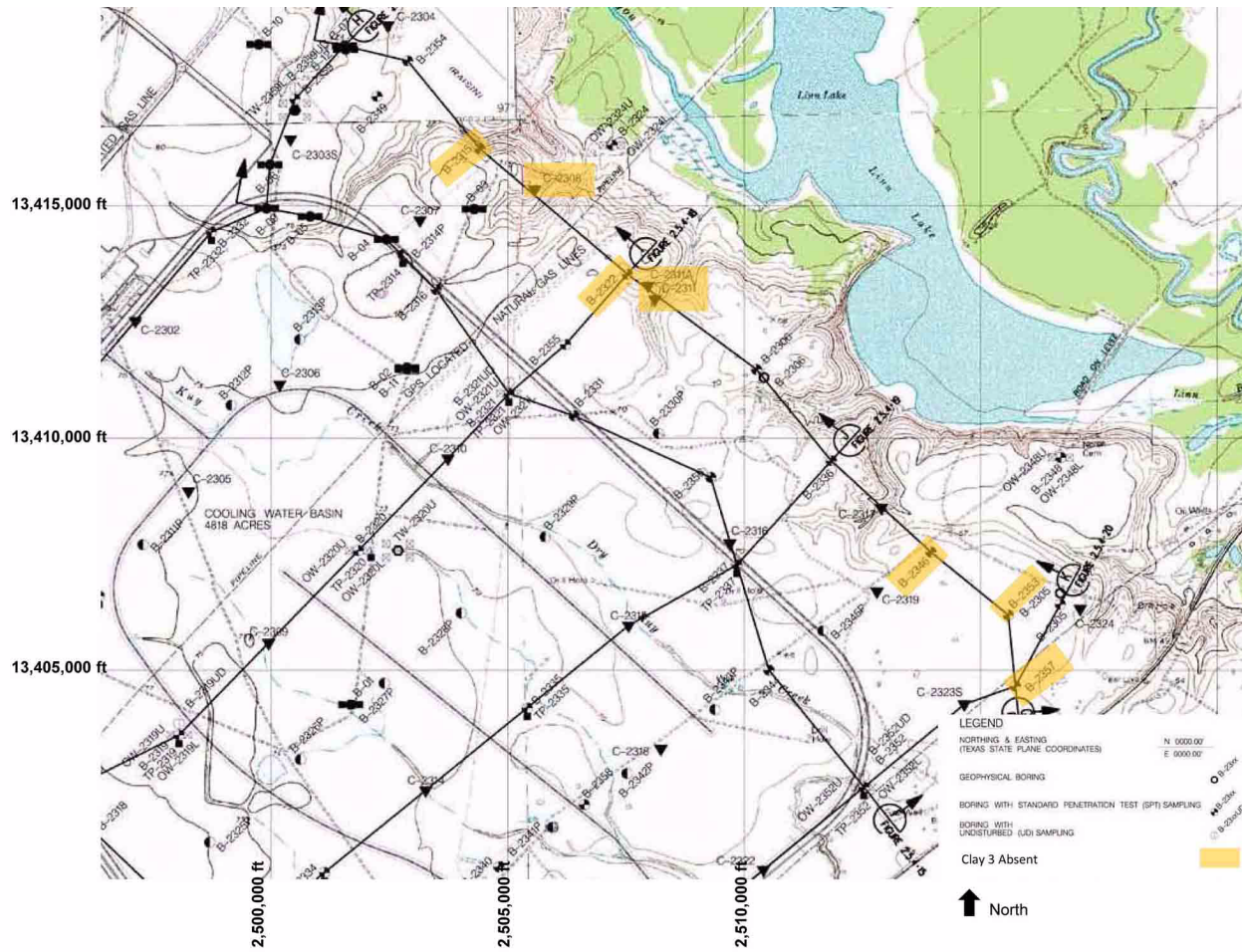


Figure 2.4.12-35 Locations Where Clay 3 Is Absent

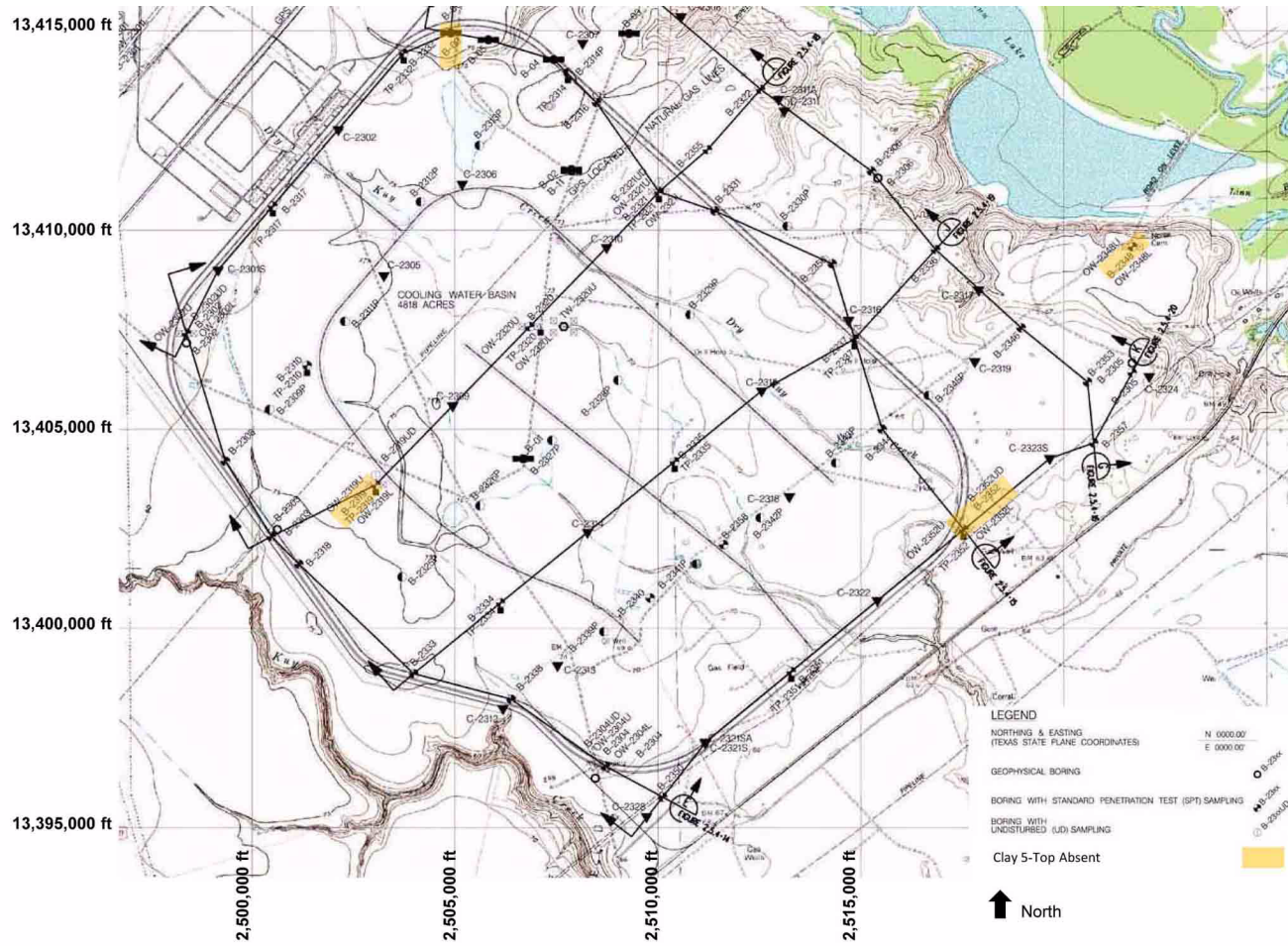


Figure 2.4.12-36 Locations Where Clay 5-Top Is Absent