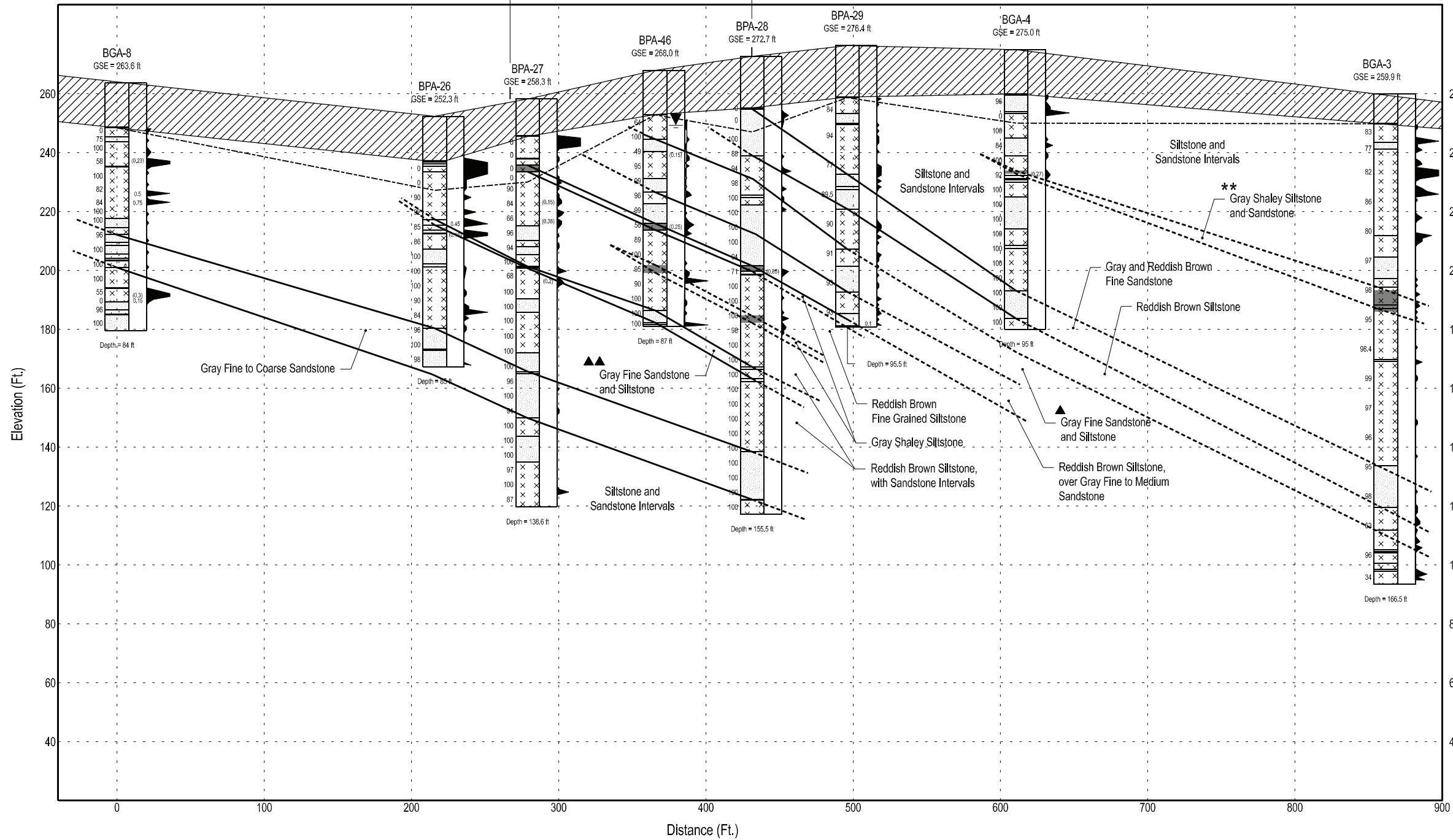


Plant West (N25W)

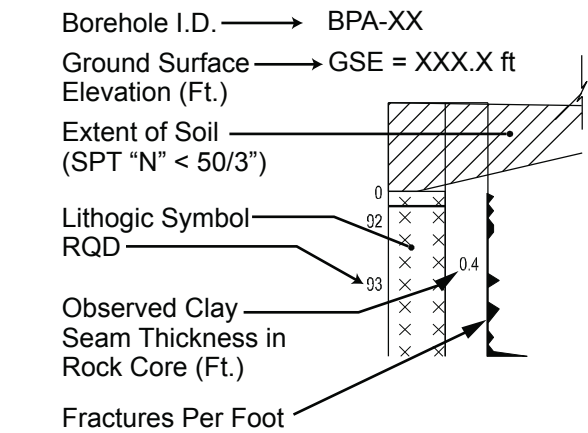
Plant East (S25E)



**LEGEND**

- ▲ HAR 3 Marker Bed A
  - ▲▲ HAR 3 Marker Bed B
  - \*\* HAR 2 Marker Bed B
  - ▽ Ground Water Level
  - Interpreted Lithology Correlation
  - - - - Possible Lithology Correlation
  - · - · - Top of Sound Rock (See Table 2.5.4-201 for definition)
  - Conglomerate
  - Sandstone
  - ▨ Shale
  - Shaly Siltstone and Sandstone
  - ××× Siltstone
  - ▨ Soil (N<50/3")
- Vertical Scale: 1" = 40.0'  
Horizontal Scale: 1" = 80.0'

**DETAIL:**



**NOTES:**

1. Clay seams or fracture zones with total clay thickness >0.1 ft. thick are shown at their approximate observed elevation. Values in parenthesis ( ) indicate total clay thickness within fraction intervals.
2. See Table 2.5.4-201 for depths and descriptions of soil and top of sound rock.
3. See Figure 2.5.4-202 for Cross Section locations.

Progress Energy Carolinas  
**Shearon Harris Nuclear Power Plant  
 Units 2 and 3**  
 Part 2, Final Safety Analysis Report  
 New Hill, North Carolina

---

Stratigraphic Cross Section at HAR 3 -  
 Plant West to East

FIGURE 2.5.4-205B Rev. 1