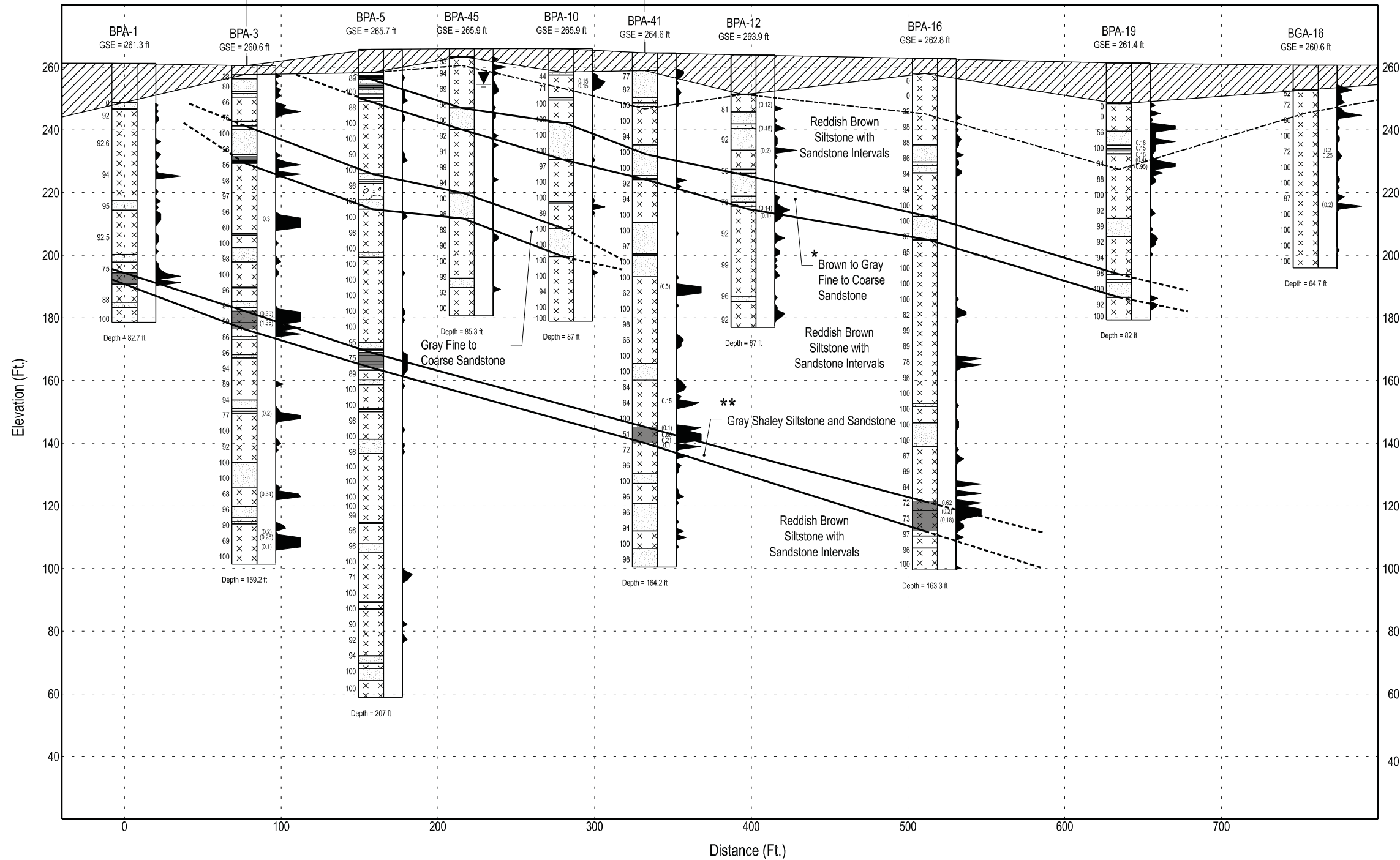


Plant South (S65W)

Plant North (N65E)

Extent of Nuclear Island -  
Excavation to 220 Ft.

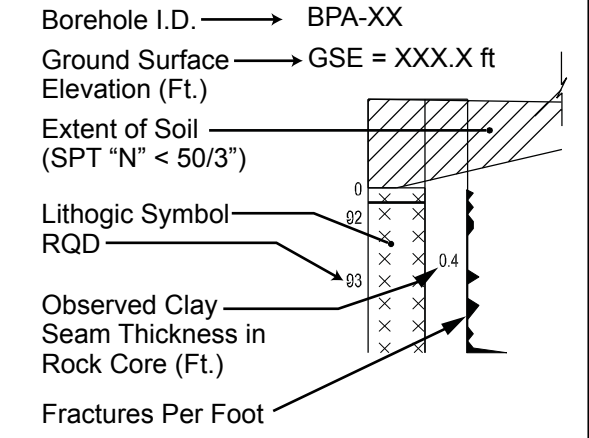


**LEGEND**

- \* HAR 2 Marker Bed A
- \*\* HAR 2 Marker Bed B
- ▼ Ground Water Level
- Interpreted Lithology Correlation
- - - - Possible Lithology Correlation
- - - - Top of Sound Rock (See Table 2.5.4-201 for definition)
- ☉ Conglomerate
- Sandstone
- ▨ Shale
- Shaly Siltstone and Sandstone
- ⊗ Siltstone
- ▨ Soil (N<50/3")

Vertical Scale: 1" = 40.0'  
Horizontal Scale: 1" = 80.0'

**DETAIL:**



**NOTES:**

1. Clay seams or fracture zones with total clay thickness >0.1 ft. thick are shown at their approximate observed elevation. Values in parenthesis ( ) indicate total clay thickness within fraction intervals.
2. See Table 2.5.4-201 for depths and descriptions of soil and top of sound rock.
3. See Figure 2.5.4-202 for Cross Section locations.