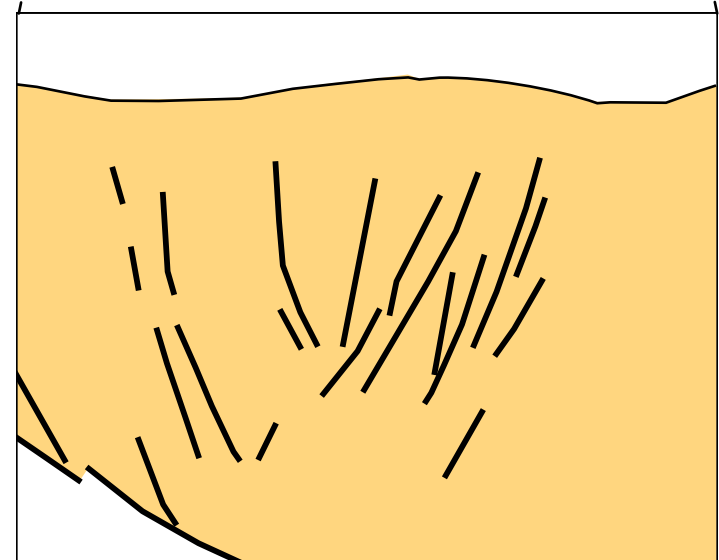
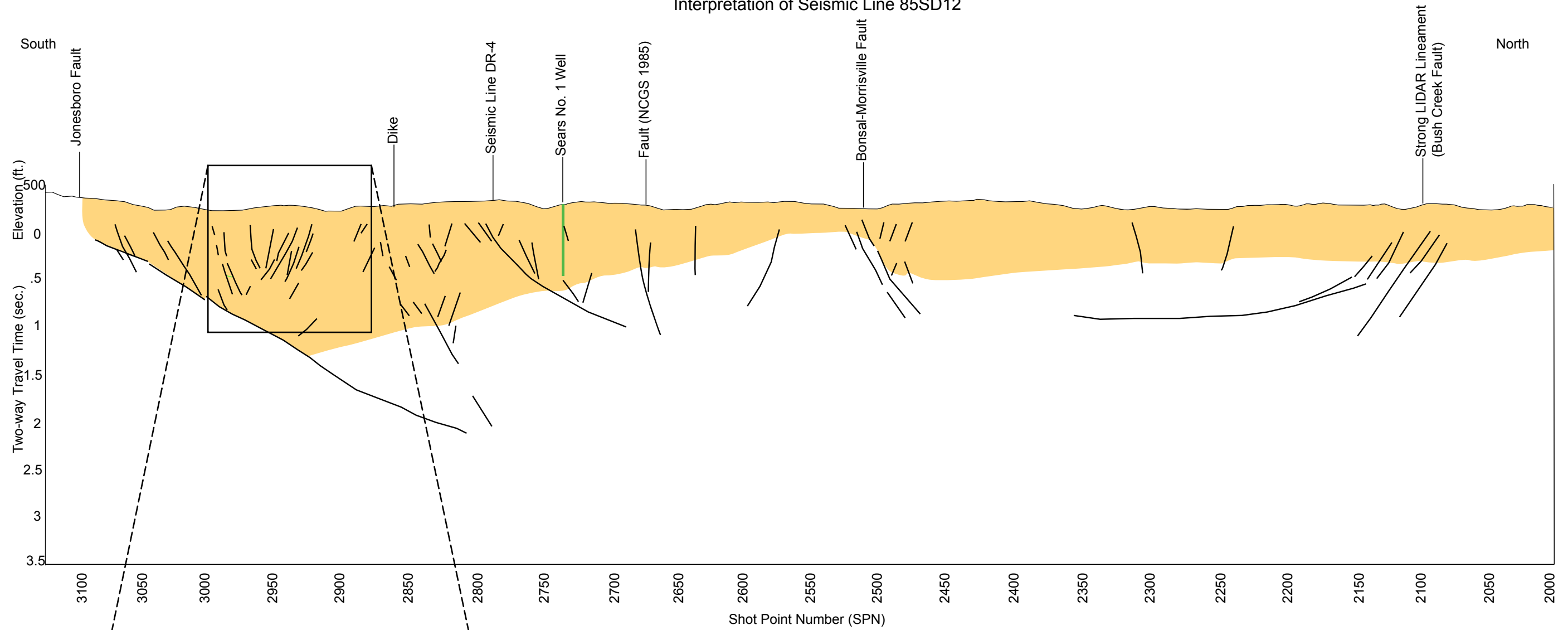
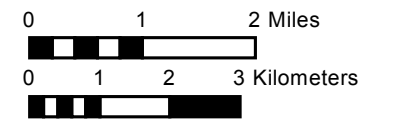


Interpretation of Seismic Line 85SD12



LEGEND

- Mesozoic Basin Sediments
- Interpreted Faults
- Sears No. 1 Well



Progress Energy Carolinas
**Shearon Harris Nuclear Power Plant
Units 2 and 3
Part 2, Final Safety Analysis Report**
New Hill, North Carolina

Interpretation of Seismic Profile 85SD12
across the Durham Basin

FIGURE 2.5.1-241