



GEOPHYSICAL LOGGING SERVICES

24" CASING CEMENT TOP TEMPERATURE LOG

Proposed Turkey Point Units 6 and 7
Docket Nos. 52-040 and 52-041
L-2012-111 Enclosure 2 Page 37 of 65

Company FP&L Well TURKEY POINT EW-1 Field FLORIDA CITY County MIAMI-DADE State FLORIDA	Country USA	Company FP&L Well TURKEY POINT EW-1 Field FLORIDA CITY County MIAMI-DADE State FLORIDA	Country USA
		Location: FPL TURKEY POINT POWER PLANT MCNABB HYDROGEOLOGIC CONSULTING, INC. LAT: 25 25' 19" N LONG: 80 20' 08" W SEC TWP RGE	API # : Other Services NONE
		Permanent Datum PAD LEVEL Elevation Log Measured From PAD LEVEL Drilling Measured From PAD LEVEL	Elevation K.B. D.F. G.L.

Date	3-MAR-2012	SEE COMMENTS
Run Number	FIFTEEN	
Depth Driller	3230'	
Depth Logger	2970'	
Bottom Logged Interval	2970'	
Top Log Interval	SURFACE	
Open Hole Size	22'	
Type Fluid	WATER	
Density / Viscosity	NA	
Max. Recorded Temp.	140 F	
Estimated Cement Top	310'	
Time Well Ready	SEE COMMENTS	
Time Logger on Bottom	SEE COMMENTS	
Equipment Number	GEO1	
Location	FT. MYERS	
Recorded By	J. CATHEY	
Witnessed By	S. DURAL	

Borehole Record				Tubing Record			
Run Number	Bit	From	To	Size	Weight	From	To
	32.5"	CASING	2978'				
	24"	2978'	2980'				
	22"	2980'	3230'				

Casing Record	Size	Wgt/Ft	Top	Bottom
Surface String				
Prot. String	34"	.375" W.T.	SURFACE	1535'
Production String	24"	.500" W.T.	SURFACE	2985'
Liner				

L-2012-111

All interpretations are opinions based on inferences from electrical or other measurements and we cannot and do not guarantee the accuracy or correctness of an interpretation, and we shall not, except in the case of gross or willful negligence on our part, be liable or responsible for any loss, costs, damages, or expenses incurred or sustained by anyone resulting from any interpretation made by any of our officers, agents or employees. These interpretations are also subject to our general terms and conditions set out in our current Price Schedule.

Comments

Proposed Turkey Point Units 6 and 7
 Docket Nos. 52-040 and 52-041
 L-2012-111 Enclosure 2 Page 38 of 65

STAGE 1 LOGGED 3-MAR-2012 @ 03:30
 STAGE 2 LOGGED 3-MAR-2012 @ 17:00
 STAGE 3 LOGGED 4-MAR-2012 @ 03:30
 STAGE 4 LOGGED 4-MAR-2012 @ 12:00
 STAGE 5 LOGGED 4-MAR-2012 @ 21:30
 STAGE 6 LOGGED 5-MAR-2012 @ 05:45
 STAGE 7 LOGGED 5-MAR-2012 @ 19:15
 STAGE 8 LOGGED 6-MAR-2012 @ 07:00
 STAGE 9 LOGGED 6-MAR-2012 @ 14:15



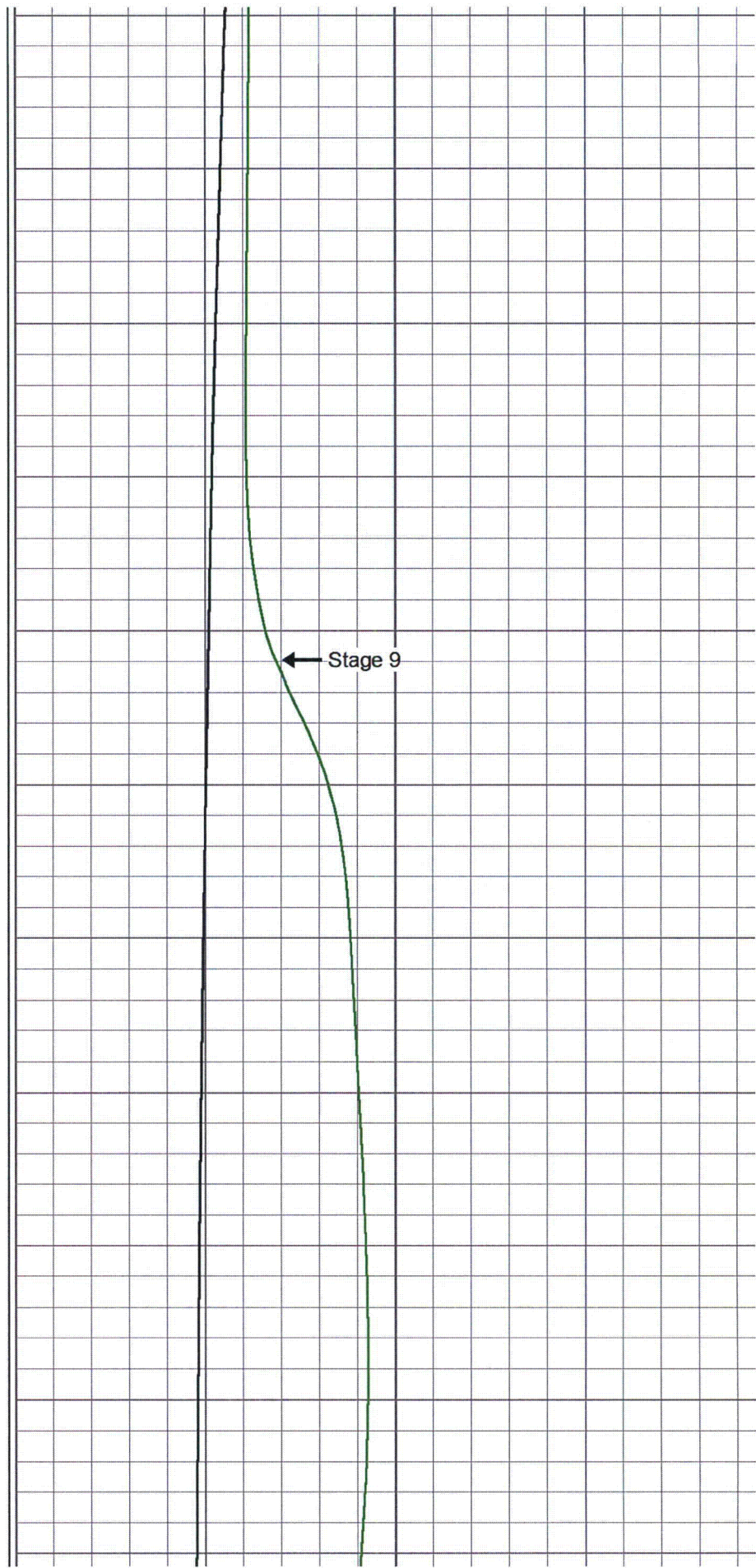
MERGED CTL

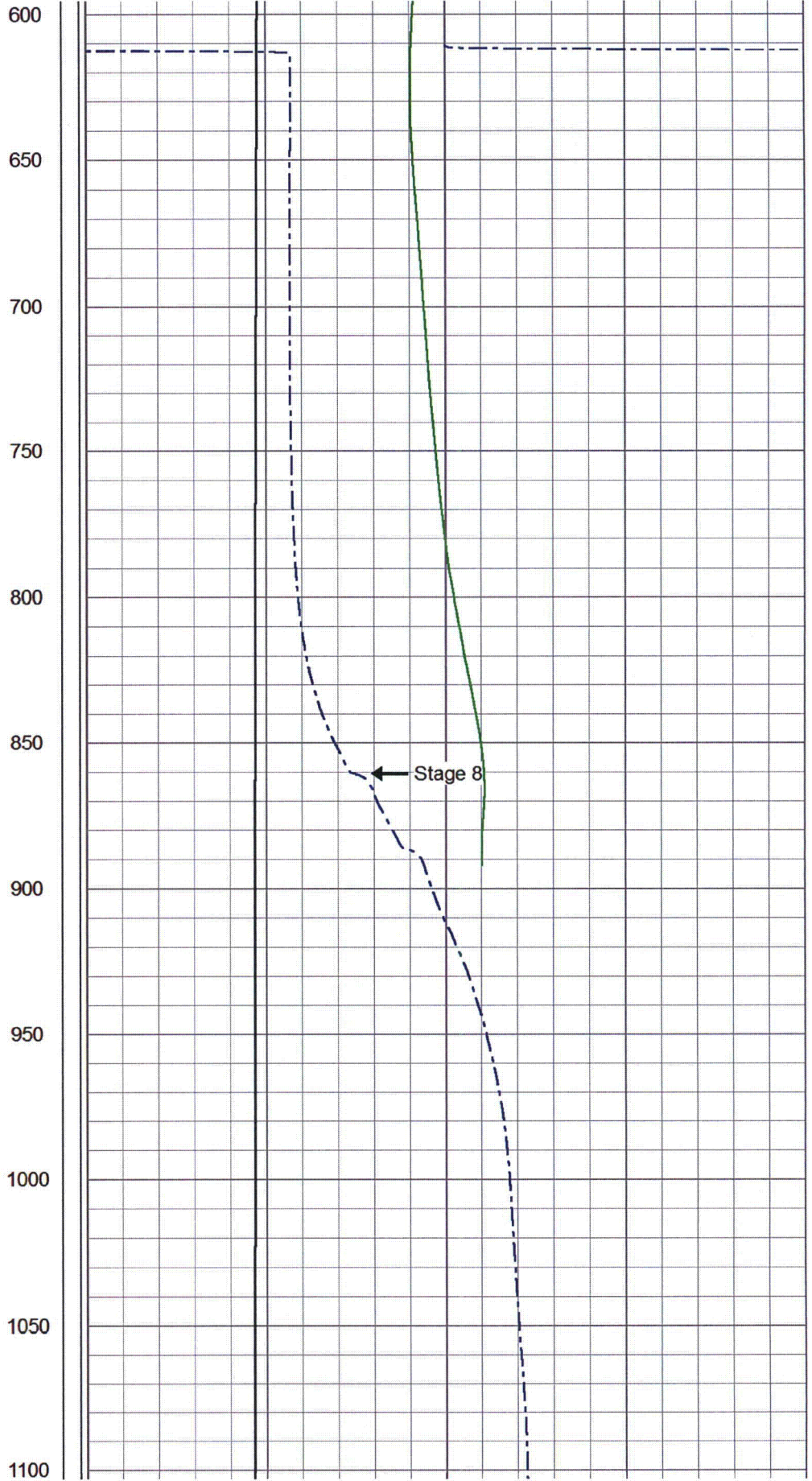
Database File: fp&lew1.db
 Dataset Pathname: run15/TEMP
 Presentation Format: ctmlrg
 Dataset Creation: Sat Mar 03 03:04:36 2012 by Log SOC 111108
 Charted by: Depth in Feet scaled 1:600

30	X-Caliper (in)	50	50	Stage 1 (degF)	15
-----			50	Stage 2 (degF)	15
-----			50	Stage 3 (degF)	15
-----			50	Stage 4 (degF)	15
-----			50	Stage 5 (degF)	15
-----			50	Stage 6 (degF)	15
-----			50	Stage 7 (degF)	15
-----			50	Stage 8 (degF)	15
-----			50	Stage 9 (degF)	15

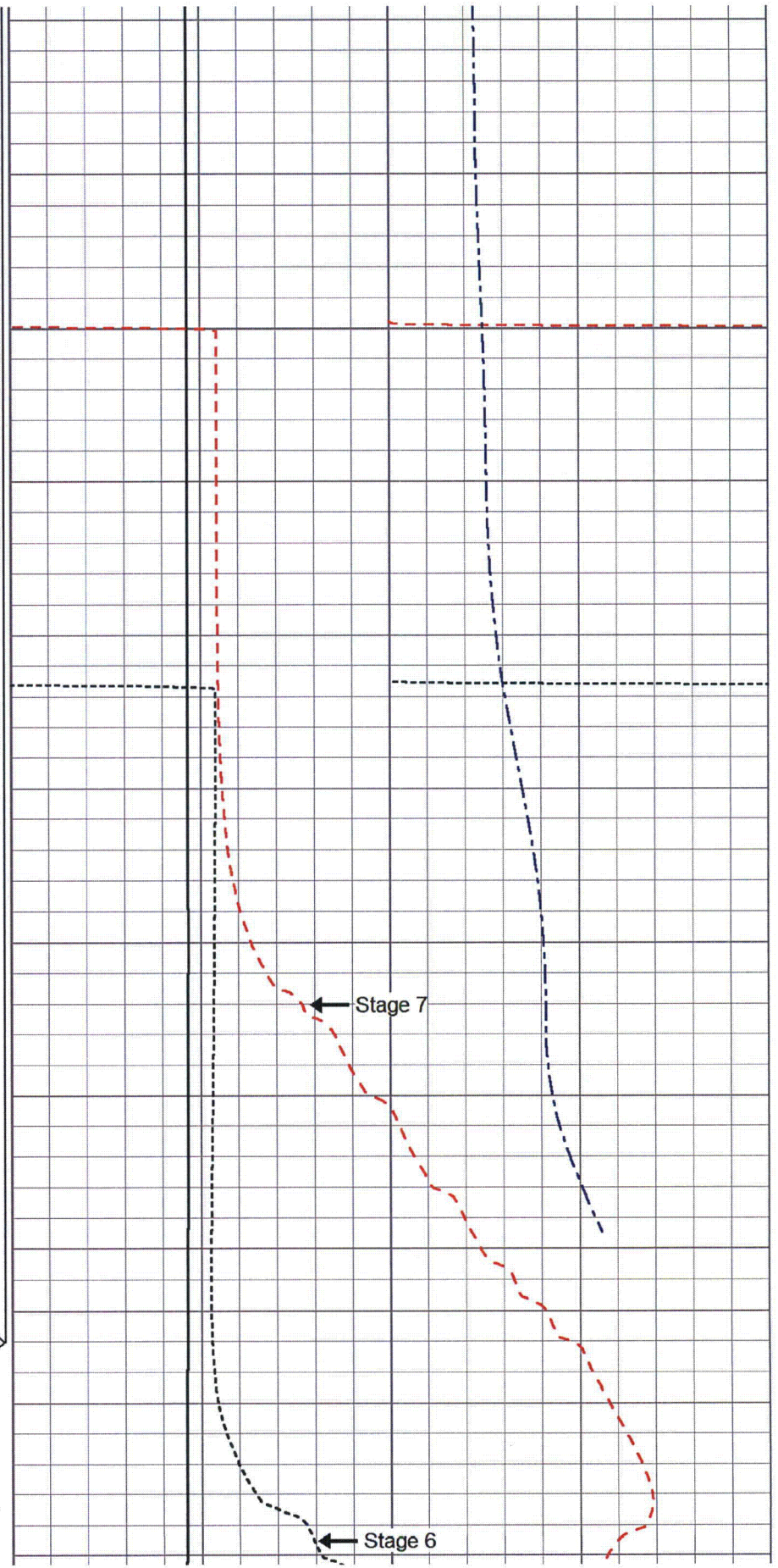


100
150
200
250
300
350
400
450
500
550
600



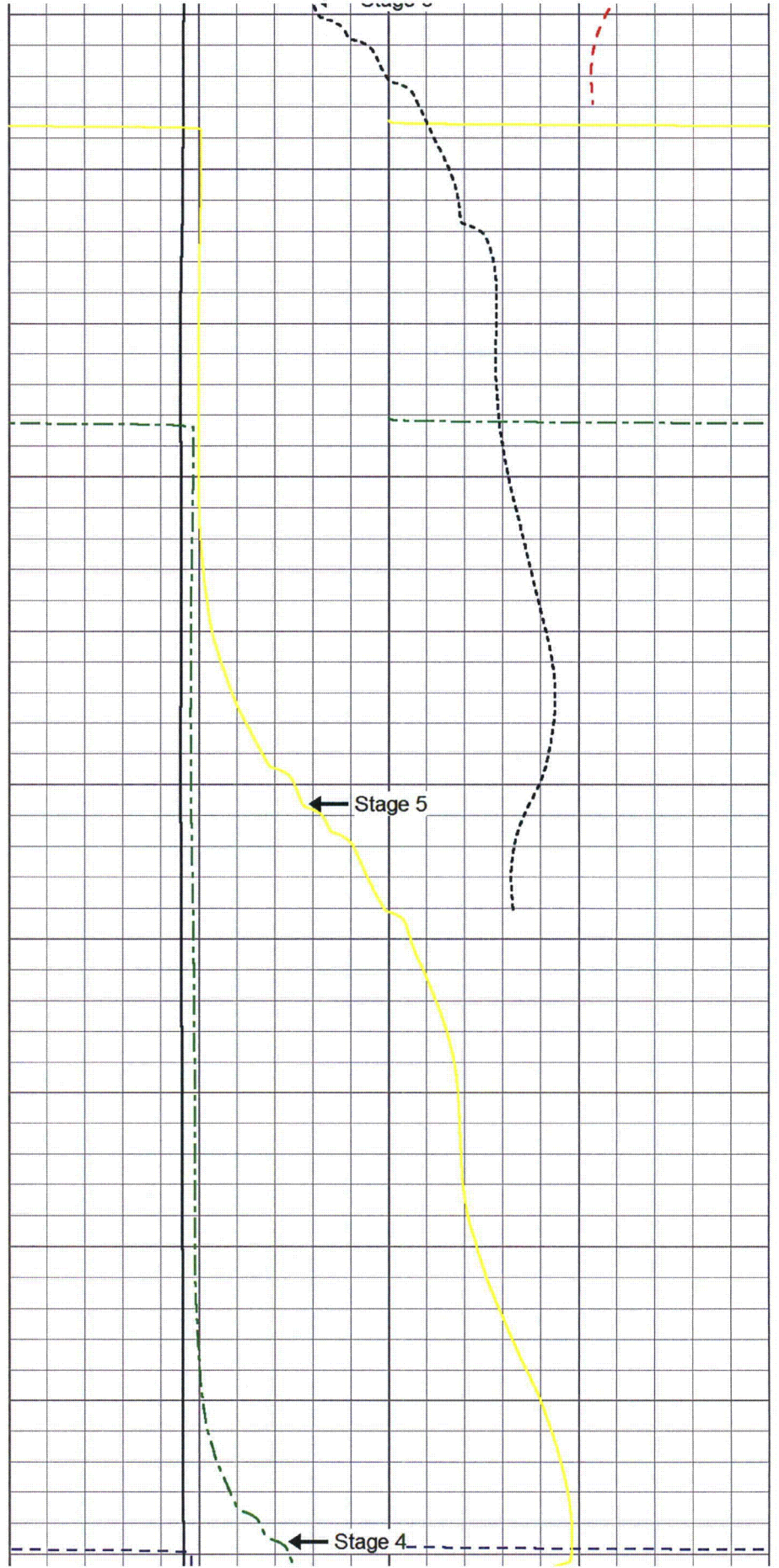
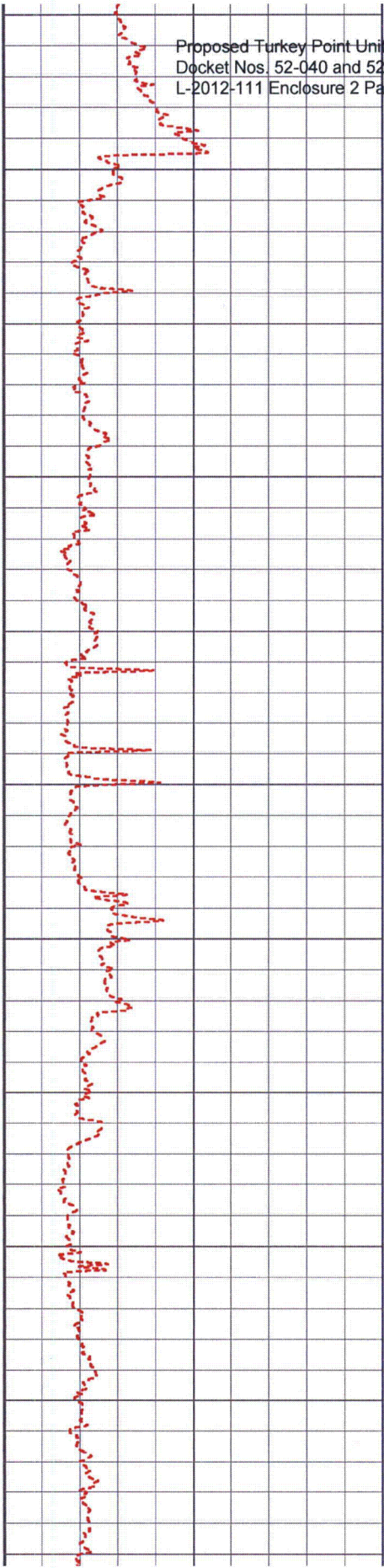


1100
1150
1200
1250
1300
1350
1400
1450
1500
1550
1600



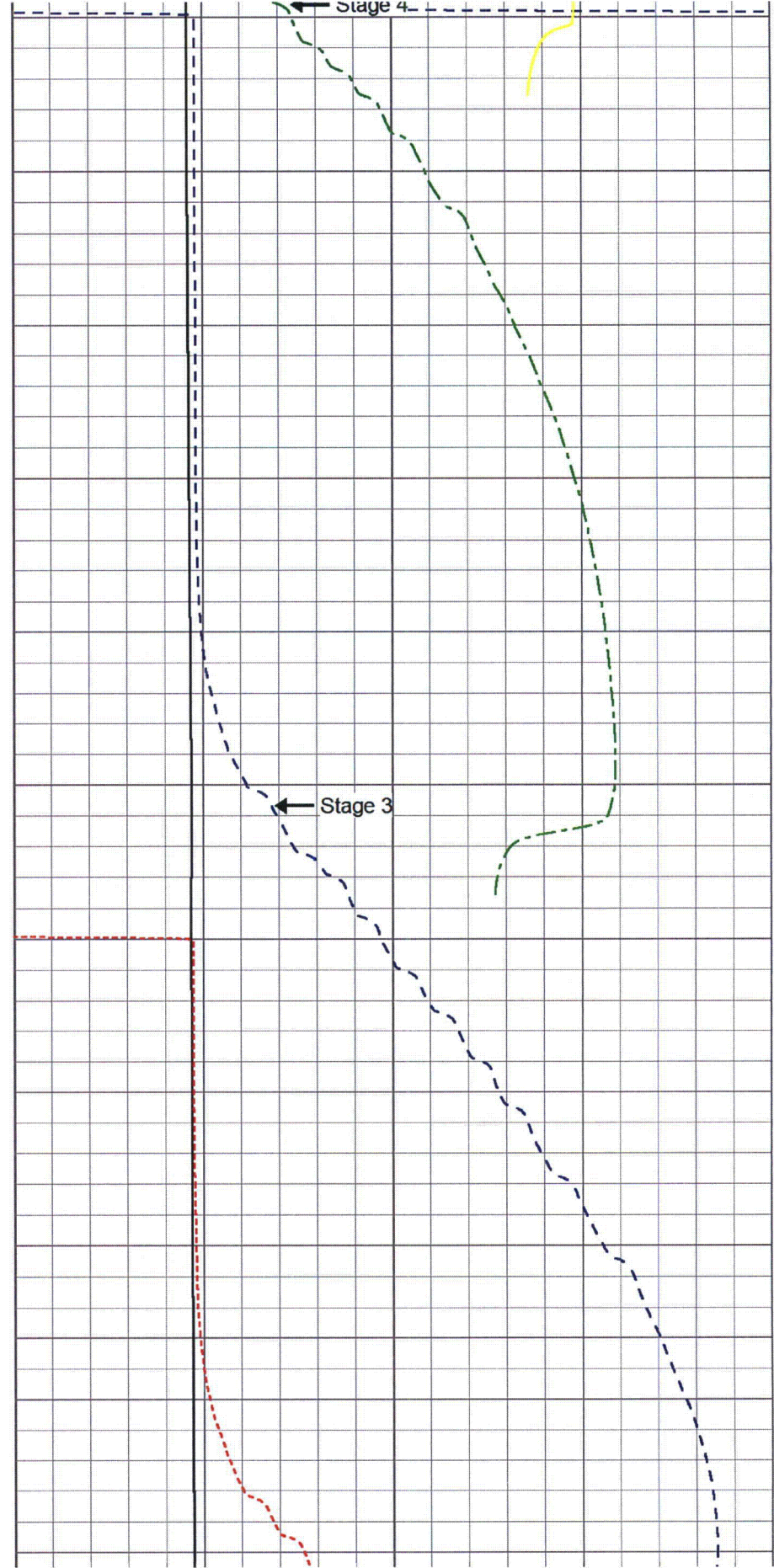
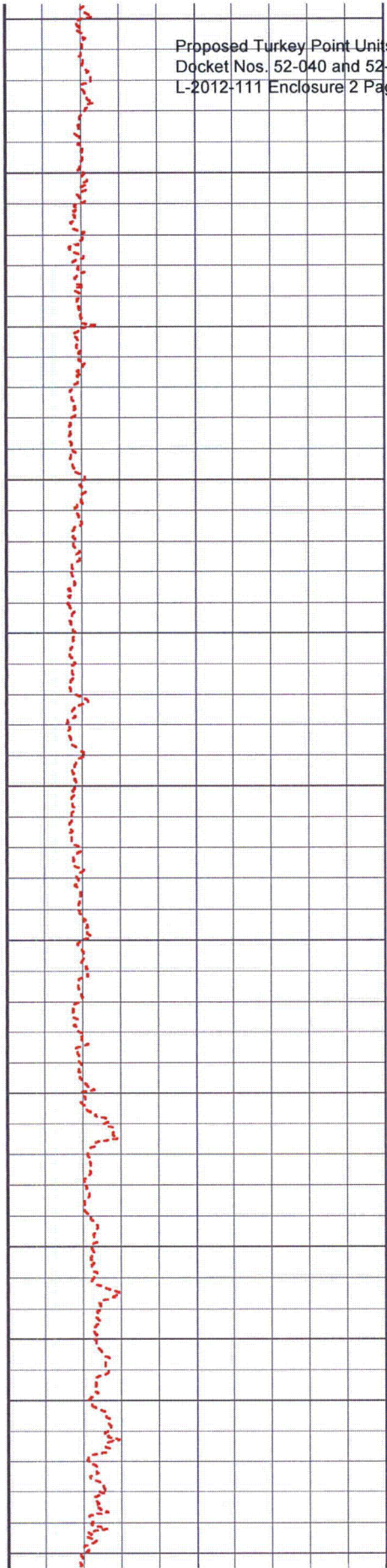
Proposed Turkey Point Units 6 and 7
Docket Nos. 52-040 and 52-041
L-2012-111 Enclosure 2 Page 42 of 65

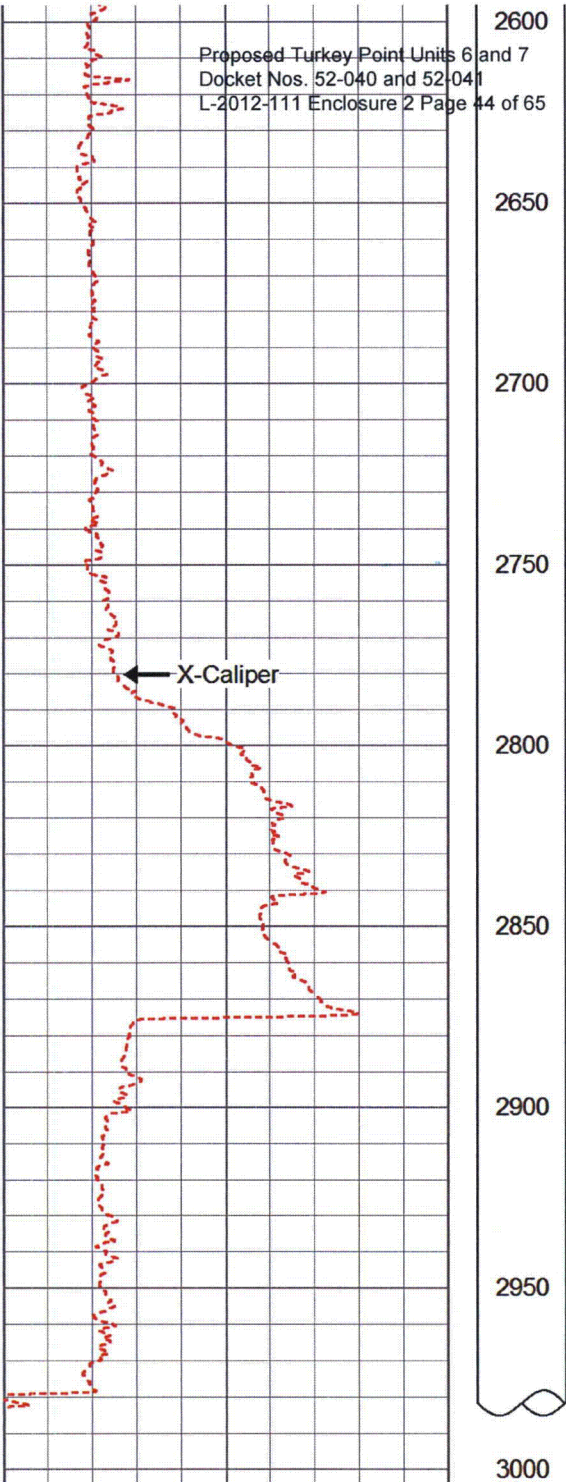
1600
1650
1700
1750
1800
1850
1900
1950
2000
2050
2100



Proposed Turkey Point Units 6 and 7
Docket Nos. 52-040 and 52-041
L-2012-111 Enclosure 2 Page 43 of 65

2100
2150
2200
2250
2300
2350
2400
2450
2500
2550
2600





30 X-Caliper (in) 50

50	Stage 1 (degF)	150
50	Stage 2 (degF)	150
50	Stage 3 (degF)	150
50	Stage 4 (degF)	150
50	Stage 5 (degF)	150
50	Stage 6 (degF)	150
50	Stage 7 (degF)	150
50	Stage 8 (degF)	150
50	Stage 9 (degF)	150

Calibration Report

Proposed Turkey Point Units 6 and 7
Docket Nos. 52-040 and 52-041
L-2012-111 Enclosure 2 Page 45 of 65


Database File: fp&lew1.db
Dataset Pathname: run15/TEMP
Dataset Creation: Sat Mar 03 03:04:36 2012 by Log SOC 111108

Temperature Calibration Report

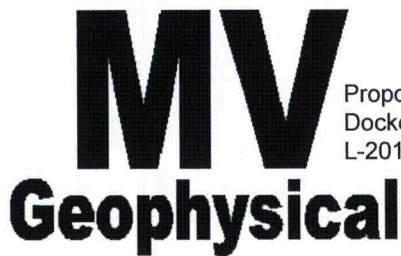
Serial Number: 111143
Tool Model: 1.375TEMP
Performed: Wed Jan 25 10:30:05 2012

	Reference		Reading
Low Reference:	0.00 degF		0.00 cps
High Reference:	100.00 degF		1000.00cps

Gain: 0.10
Offset: 0.00
Delta Spacing 1

Sensor	Offset (ft)	Schematic	Description	Len (ft)	OD (in)	Wt (lb)
TEMP	0.13		TEMP-1.375TEMP (111143) Temperature Tool	1.33	1.38	5.00

Dataset:	fp&lew1.db: field/well/run15/TEMP
Total Length:	1.33 ft
Total Weight:	5.00 lb
O.D.	1.38 in



Proposed Turkey Point Units 6 and 7
 Docket Nos. 52-040 and 52-041
 L-2012-111 Enclosure 2 Page 46 of 65

CEMENT BOND LOG w/ VARIABLE DENSITY LOG

Company Layne Christensen Company
 Well Turkey Point EW-1
 Field Florida City
 County Miami-Dade
 State/Prv Florida

Company **Layne Christensen Company**
 Well **Turkey Point EW-1**
 Field **Florida City**
 County **Miami-Dade** State/Prv **Florida**

Location			Other Services
FPL Turkey Point Power Plant LAT: 25 25' 19" N LONG: 80 20' 08" W McNabb Hydrogeologic Consulting, Inc.			NONE
			Elevation
Permanent Datum	Pad Level	Elevation	K.B.
Log Measured From	Pad Level		D.F.
Drilling Measured From	Pad Level		G.L.

Date	7-MAR-2012		
Run Number	SIXTEEN		
Depth Driller	2985'		
Depth Logger	2985'		
Bottom Logged Interval	2985'		
Top Log Interval	15'		
Open Hole Size	28"/32"		
Type Fluid	H2O		
Density / Viscosity	NA/NA		
Max. Recorded Temp.	NA		
Estimated Cement Top	SURFACE		
Time Well Ready	12:00 3/7/2012		
Time Logger on Bottom	13:00 3/7/2012		
Equipment Number	MVGS-1		
Location	Ft. Myers		
Recorded By	S.Miller/C.Miller		
Witnessed By	S.Durall (MHC)	K.Greuel (LCC)	

Borehole Record				Tubing Record			
Run Number	Bit	From	To	Size	Weight	From	To
ONE	12.25"	SURFACE	255'	FIVE	12.25"	1090'	1655'
TWO	62.5"	SURFACE	259'	SIX	42.5"	1090'	1542'
THREE	12.25"	255'	1090'	SEVEN	12.25"	1535'	3230'
FOUR	52.5"	255'	1095'	EIGHT	32"	1535'	2100'

Casing Record	Size	Wgt/Ft	Top	Bottom
Surface String	64"	0.375" WT	SURFACE	33'
Prot. String	54"	0.375" WT	SURFACE	255'
Production String	44"	0.375" WT	SURFACE	1090'
Liner	34"	0.375" WT	SURFACE	1535'

Invoice No.	2012045	LTP1B.db	8fld/las/pdf	* FINAL PRINT *
-------------	---------	----------	--------------	-----------------

^^^ Fold Here vvv

All interpretations are opinions based on inferences from electrical or other measurements and we cannot and do not guarantee the accuracy or correctness of any interpretation, and we shall not, except in the case of gross or willful negligence on our part, be liable or responsible for any loss, costs, damages, or expenses incurred or sustained by anyone resulting from any interpretation made by any of our officers, agents or employees. These interpretations are also subject to our general terms and conditions set out in our current Price Schedule.

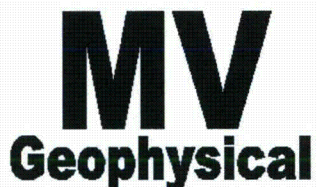
Comments

Proposed Turkey Point Units 6 and 7
 Docket Nos. 52-040 and 52-041
 L-2012-111 Enclosure 2 Page 47 of 65

CEMENT BOND LOG was run centralized.

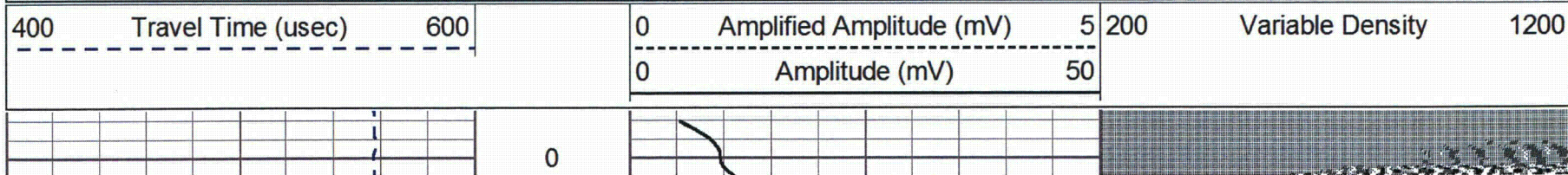
BOREHOLE RECORD
 RUN SIZE FROM TO
 NINE 28" 2100' 2900'

CASING RECORD
 RUN SIZE (WT) FROM TO
 SIX 24" (0.500") SURFACE 2985'

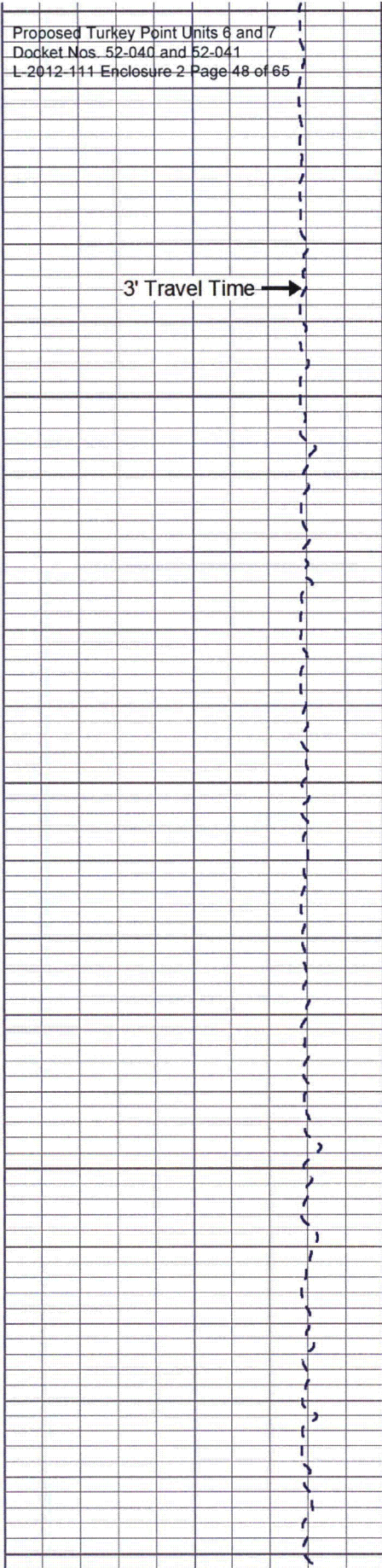


MAIN PASS

Database File: ltp1c.db
 Dataset Pathname: run13/MAIN
 Presentation Format: cbl24
 Dataset Creation: Wed Mar 07 15:51:56 2012
 Charted by: Depth in Feet scaled 1:240



3' Travel Time →



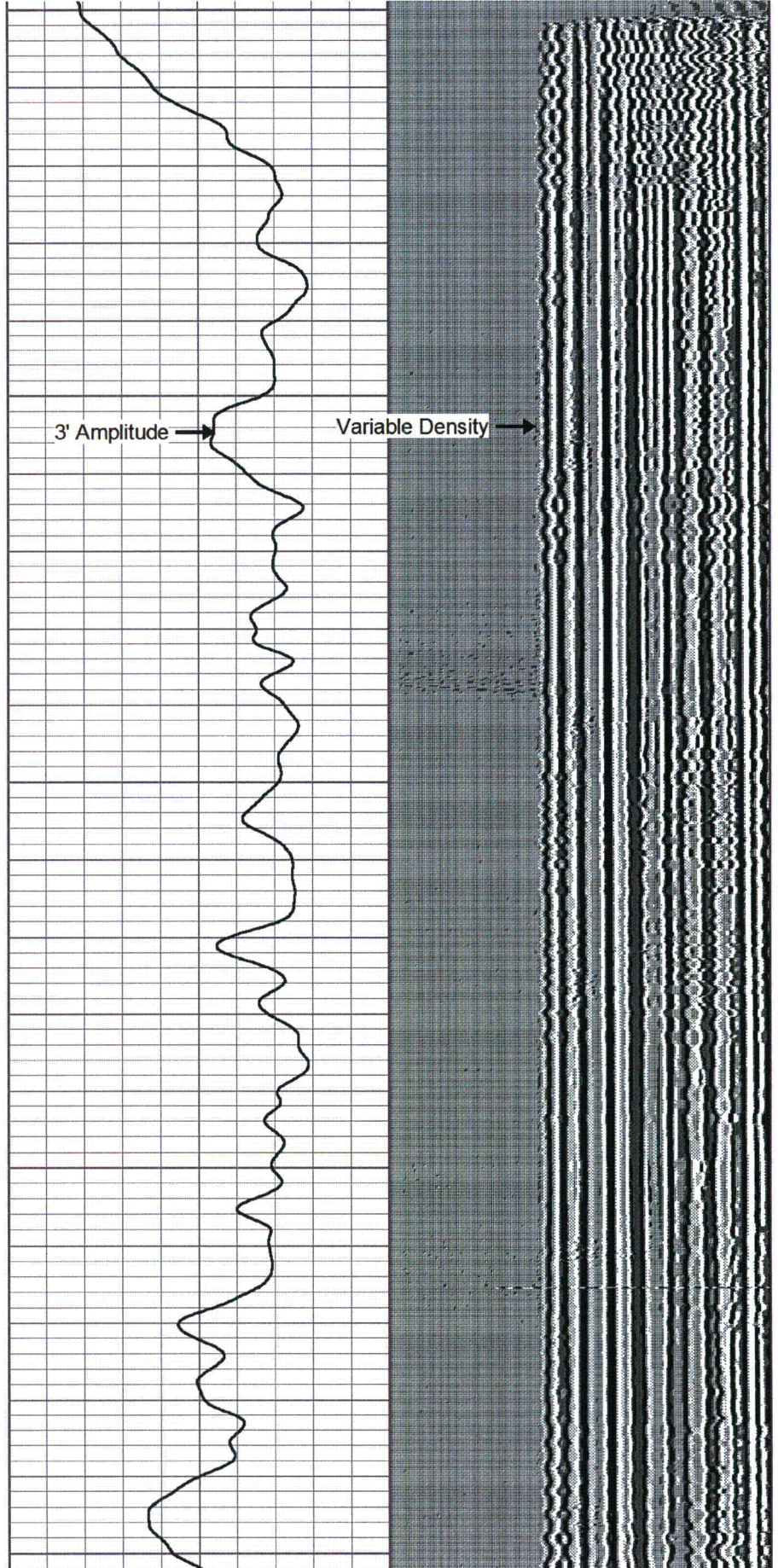
0

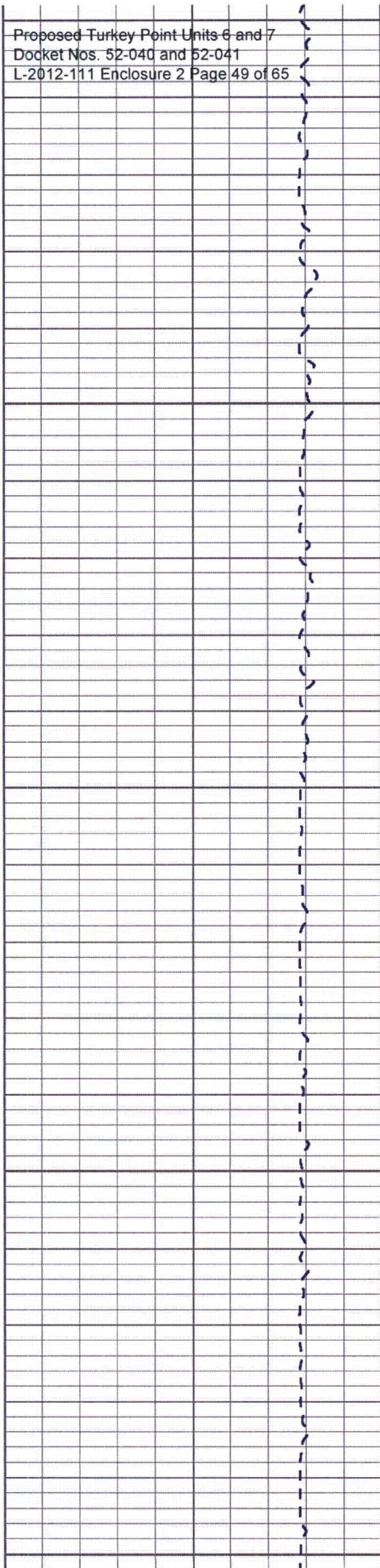
3' Amplitude →

Variable Density →

100

200

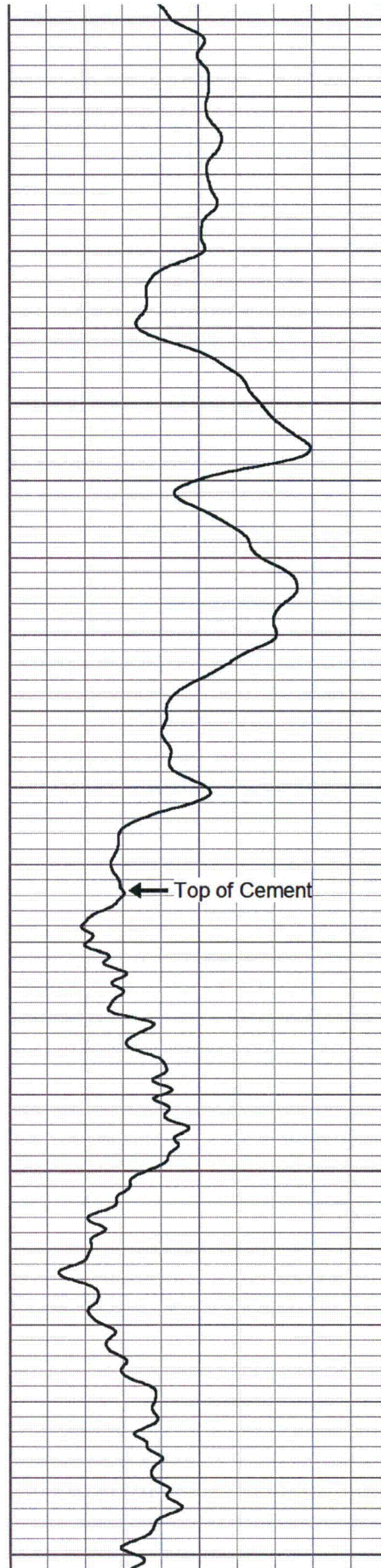




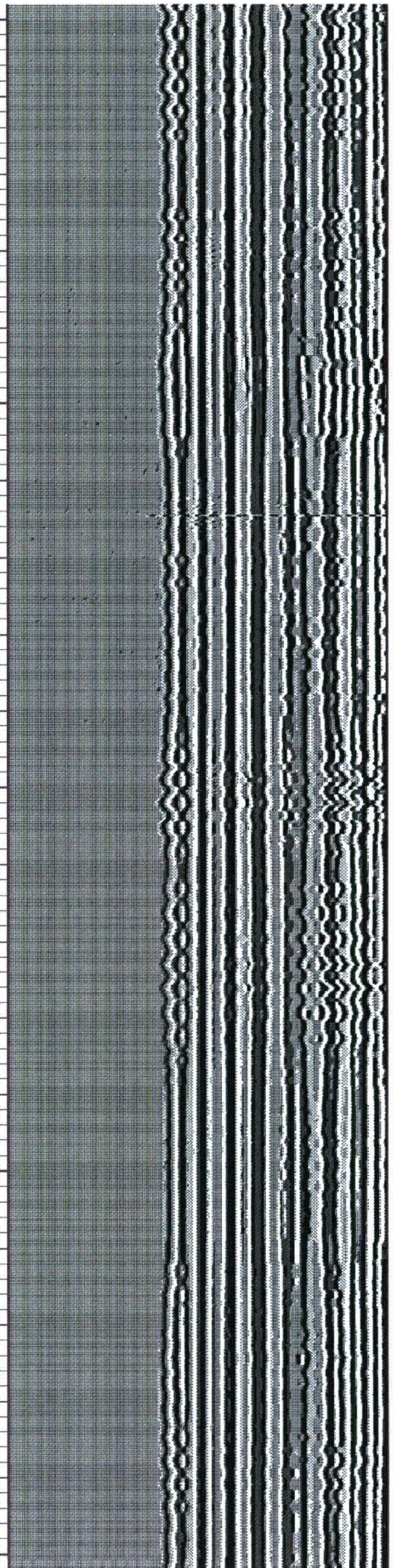
200

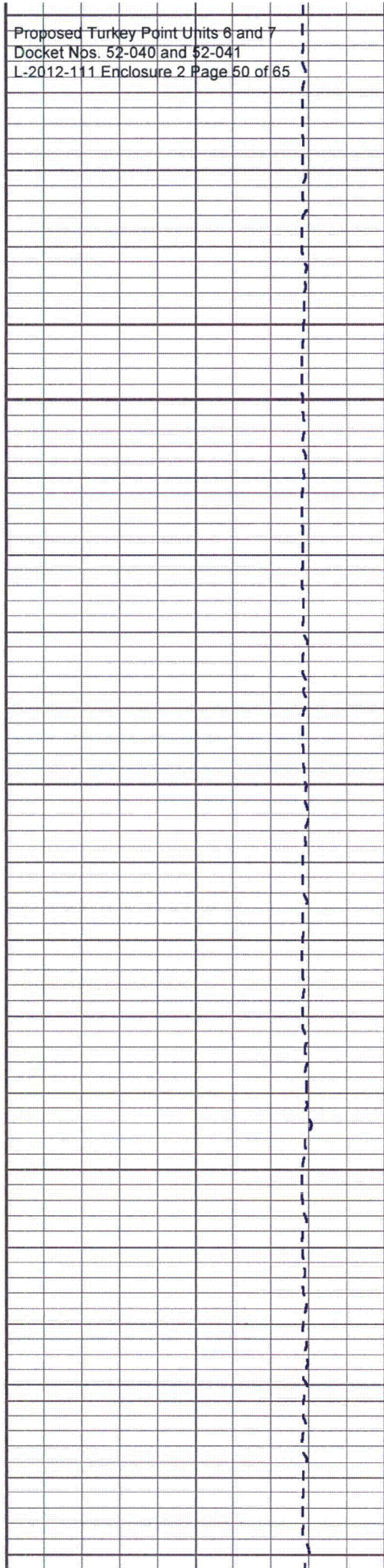
300

400



← Top of Cement

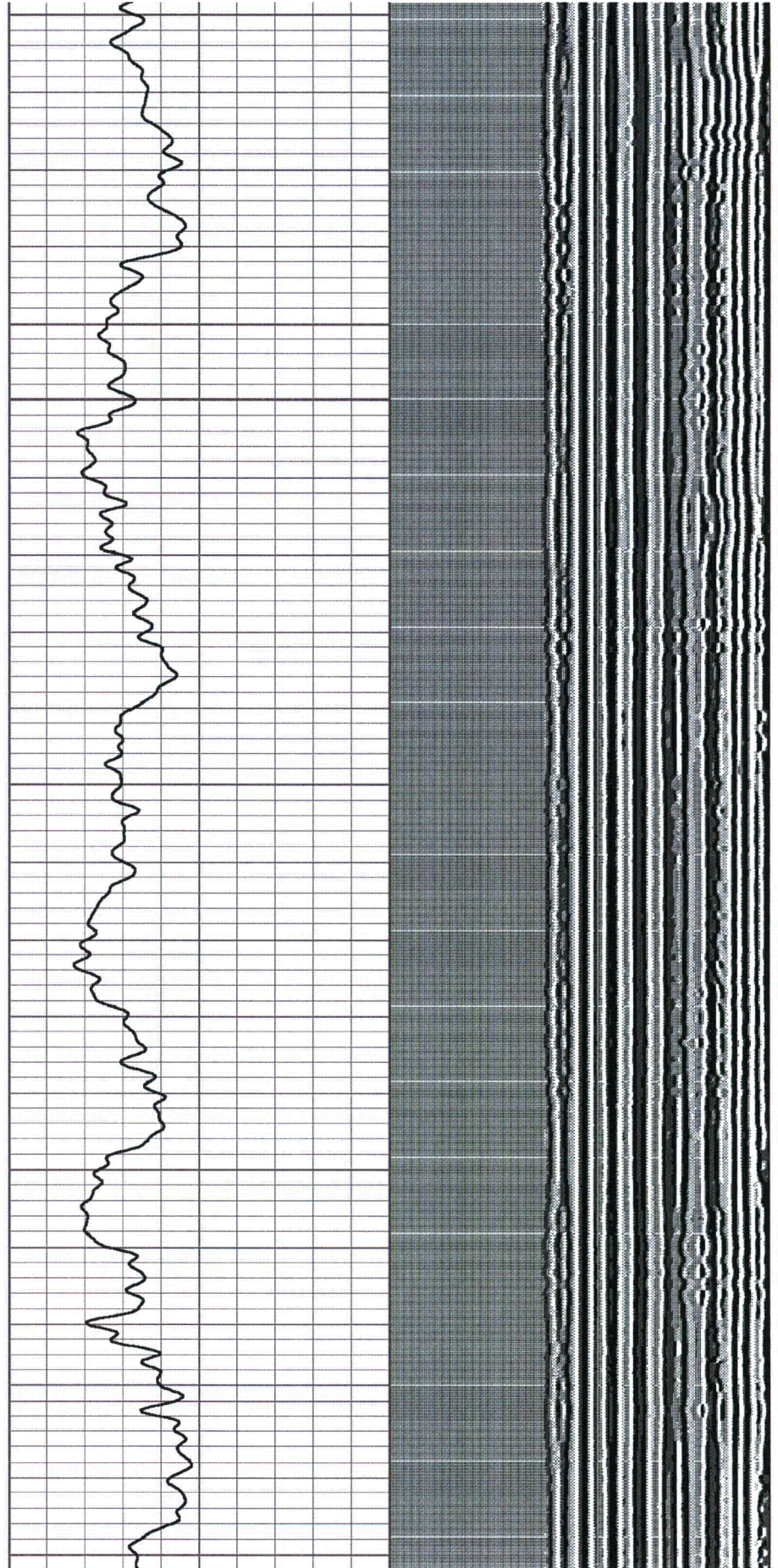




400

500

600

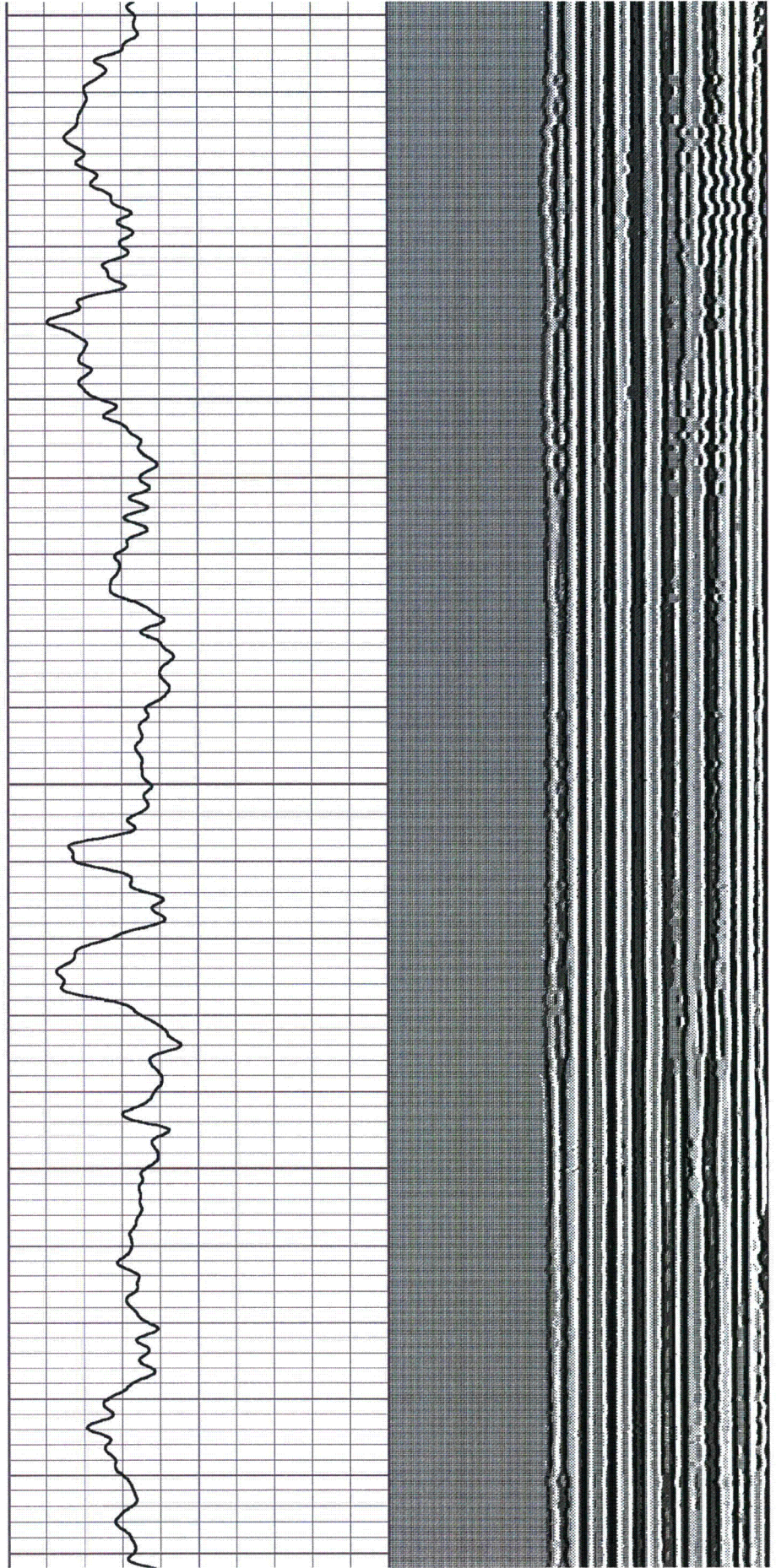


Proposed Turkey Point Units 6 and 7
Docket Nos. 52-040 and 52-041
L-2012-111 Enclosure 2 Page 51 of 65

600

700

800

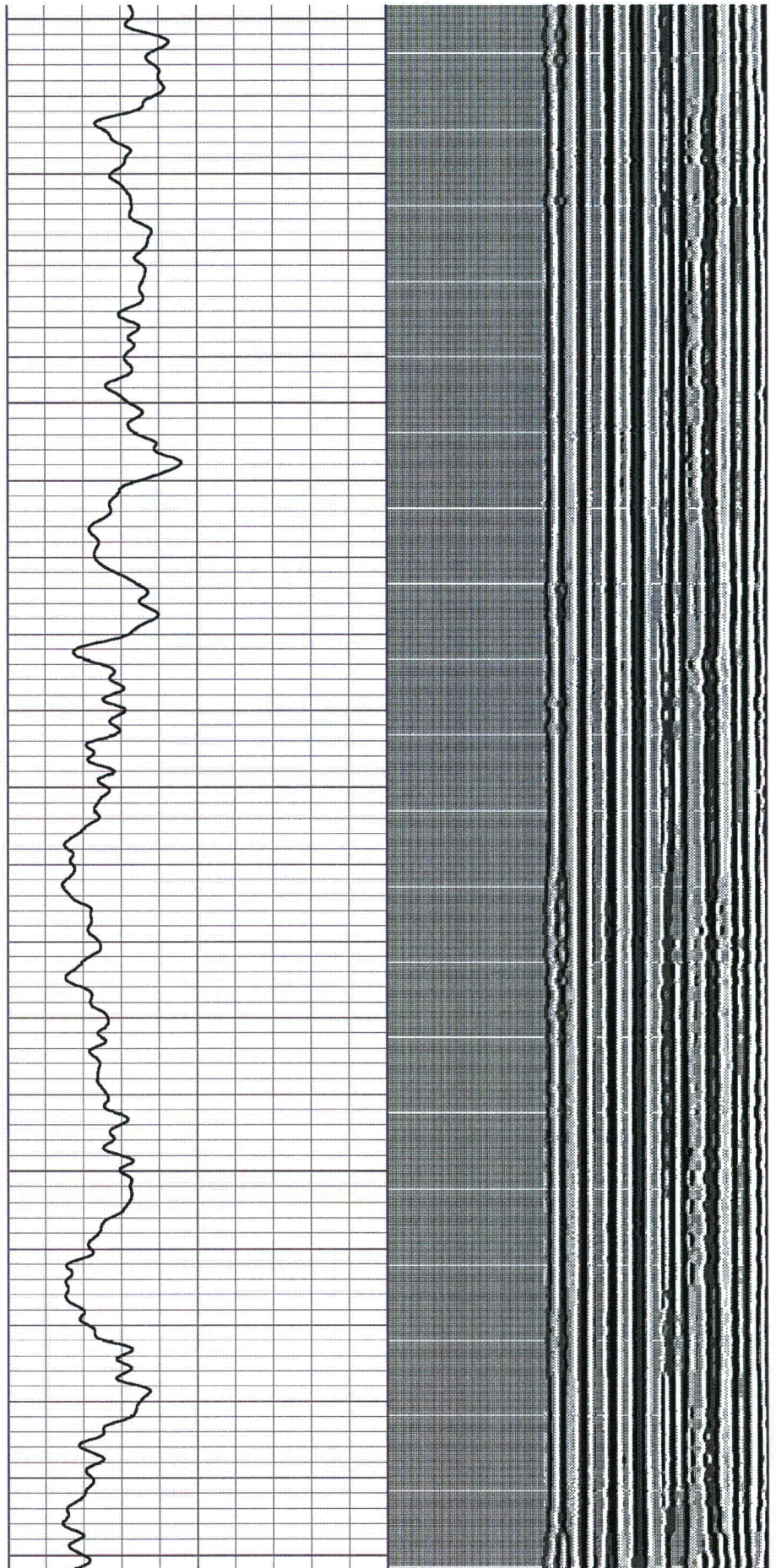


Proposed Turkey Point Units 6 and 7
Docket Nos. 52-040 and 52-041
L-2012-111 Enclosure 2 Page 52 of 65

800

900

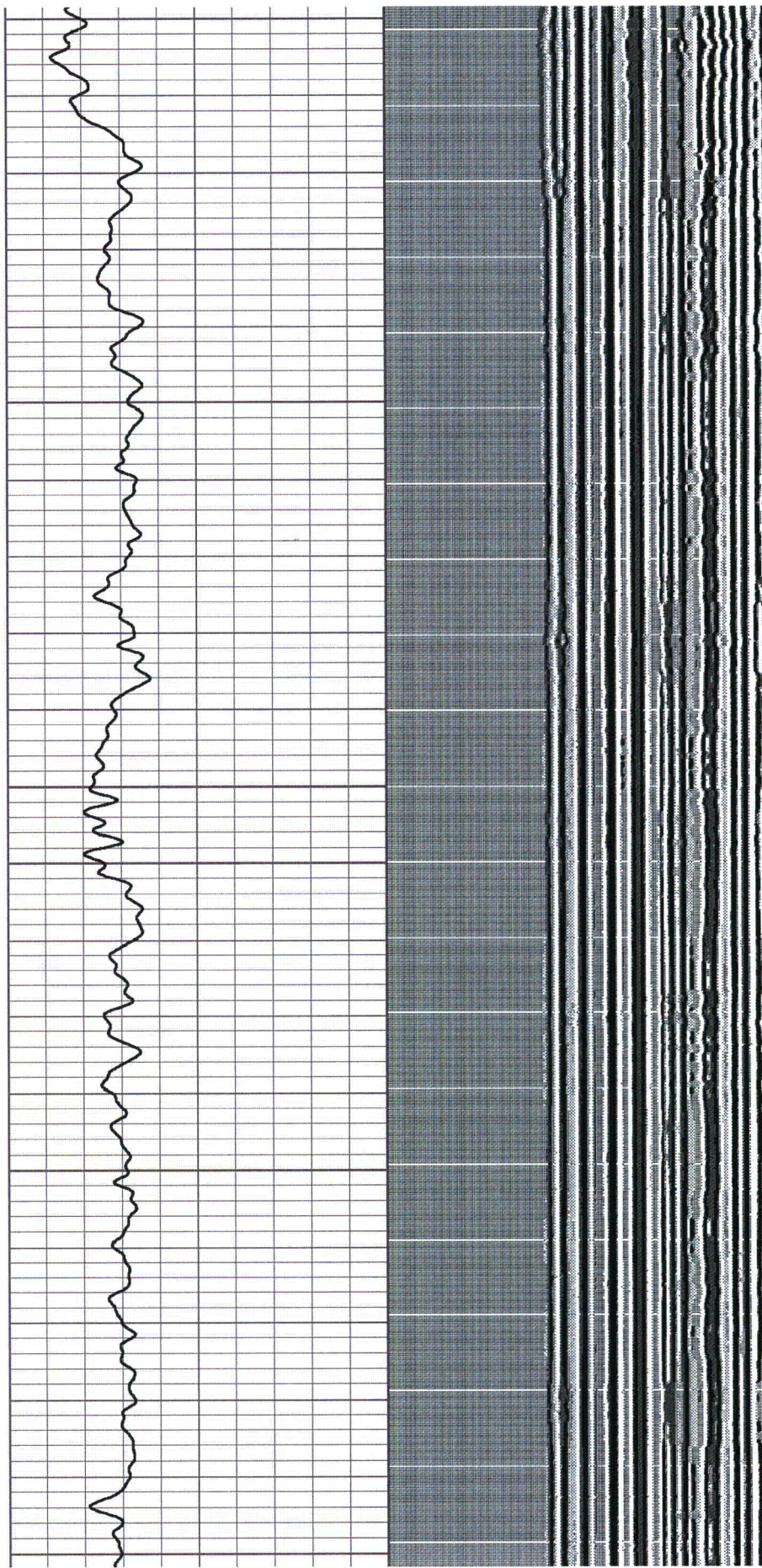
1000



1000

1100

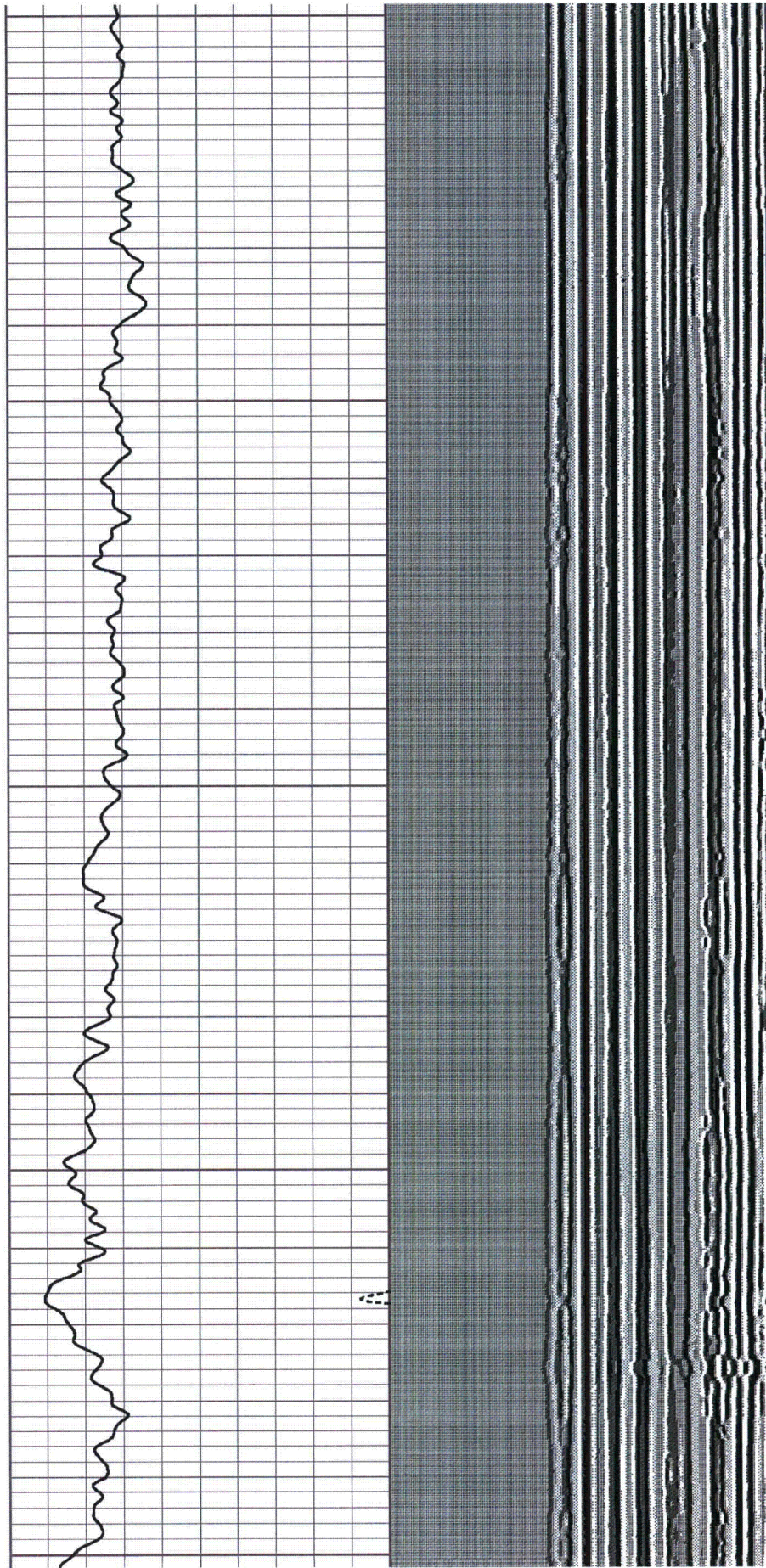
1200



1200

1300

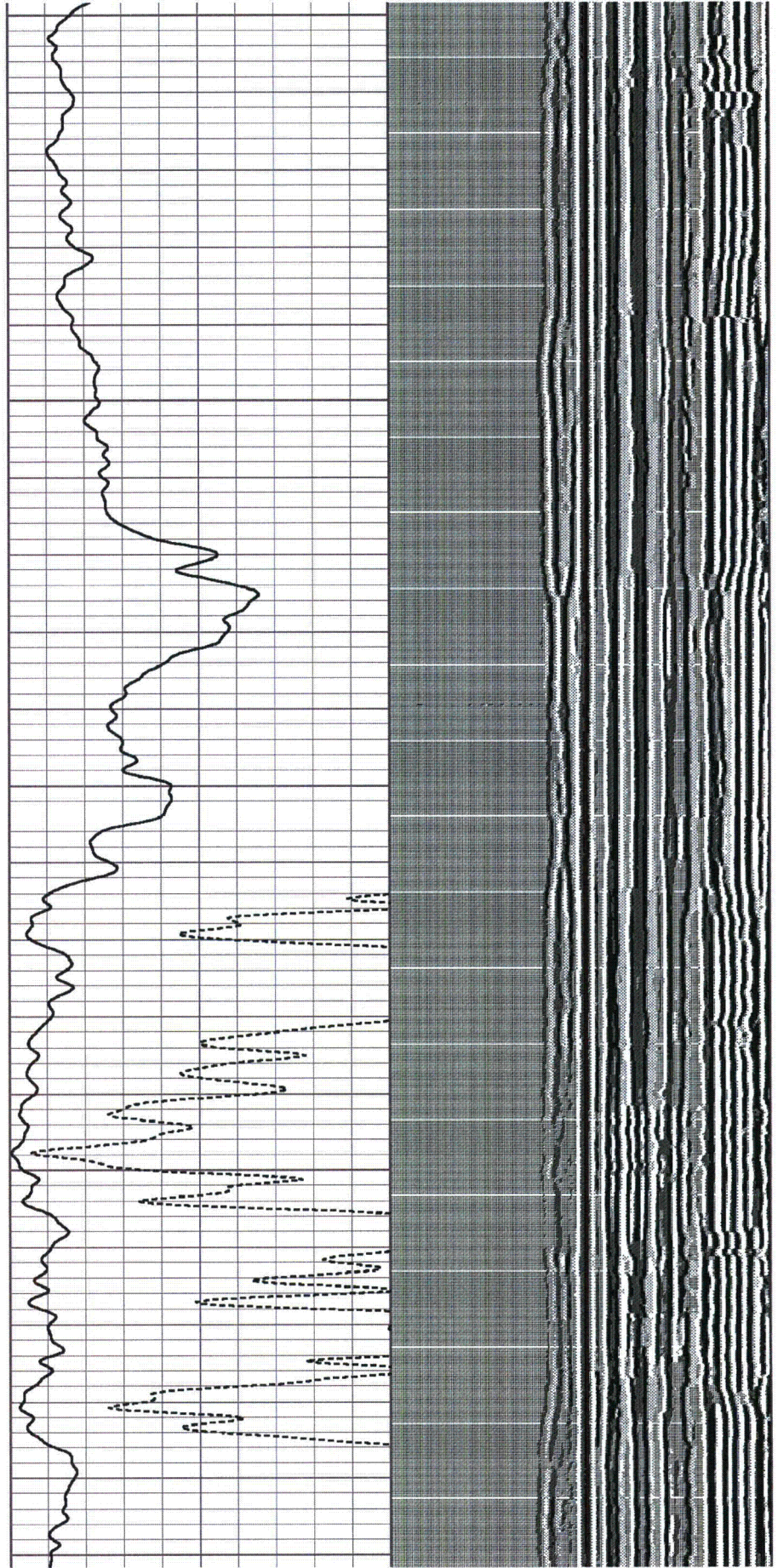
1400



1400

1500

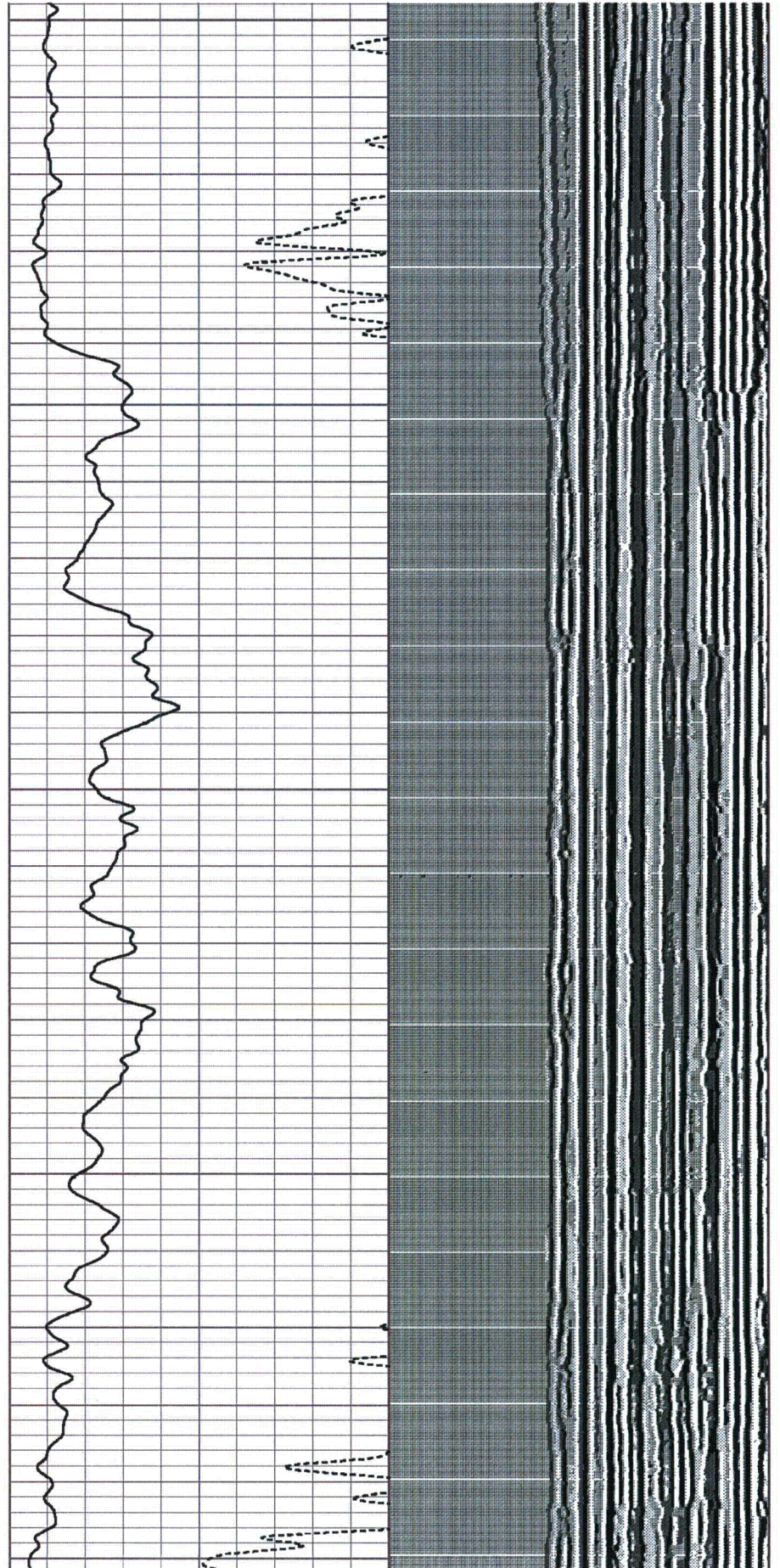
1600



1600

1700

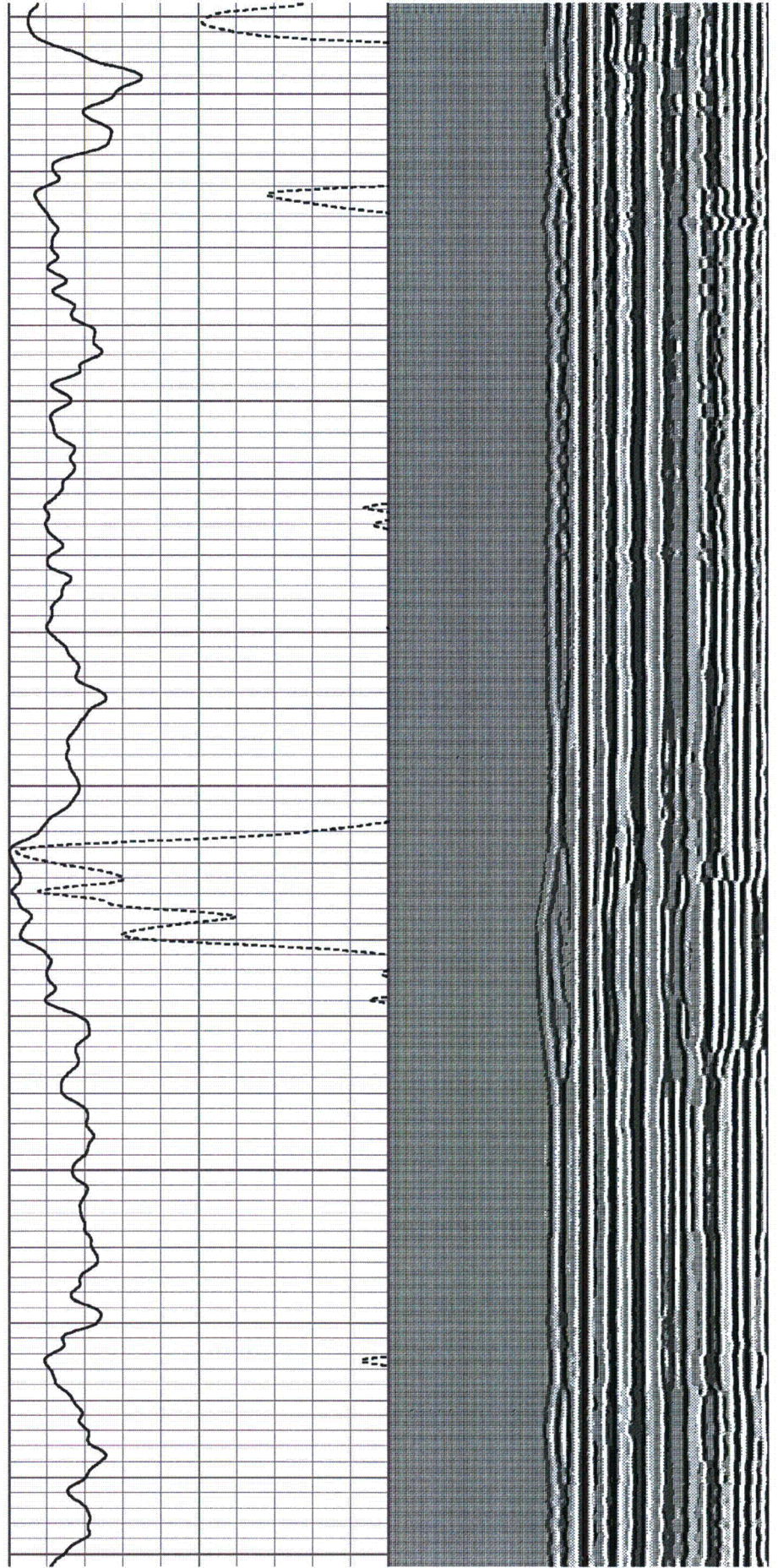
1800



1800

1900

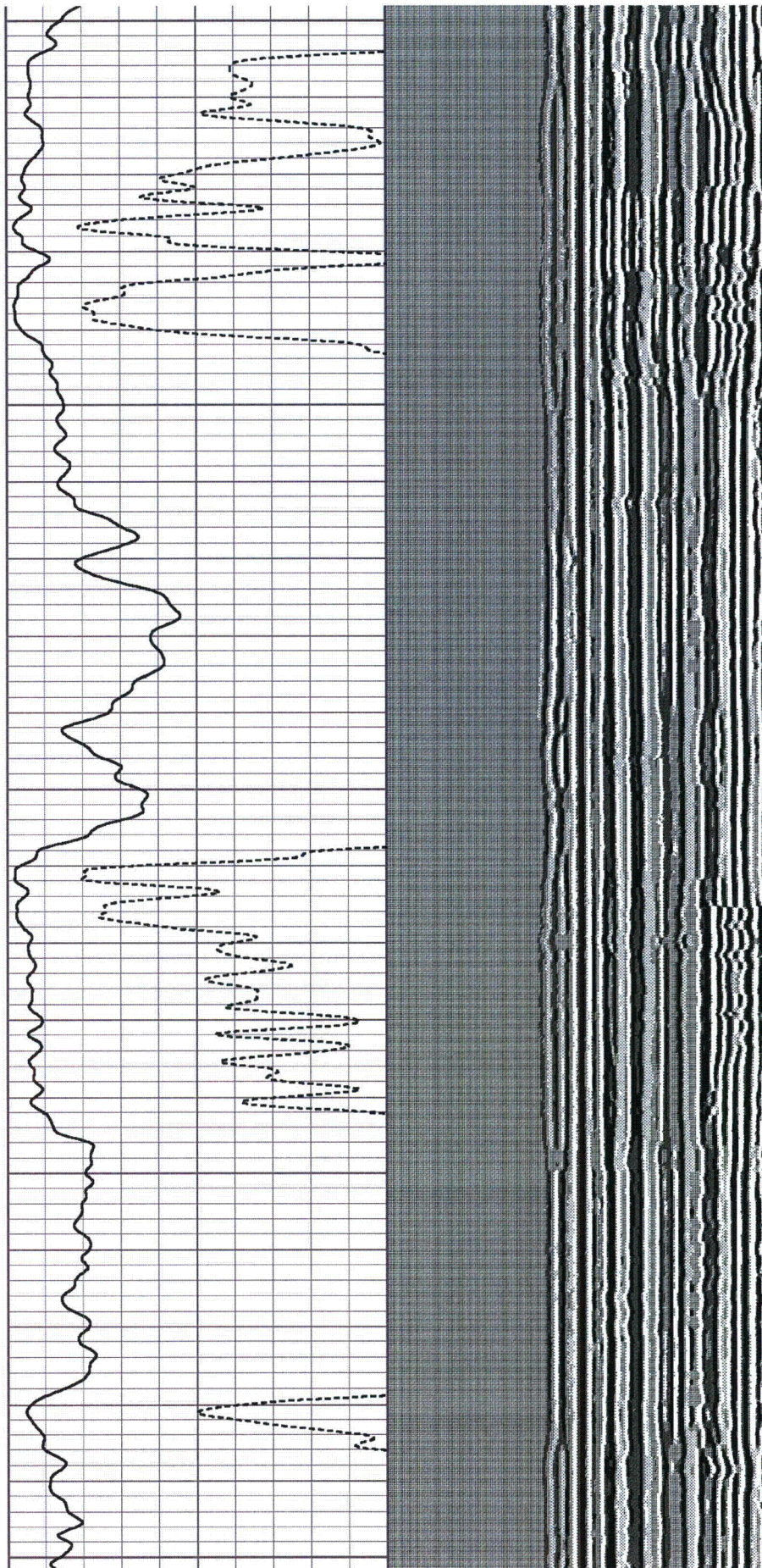
2000



2000

2100

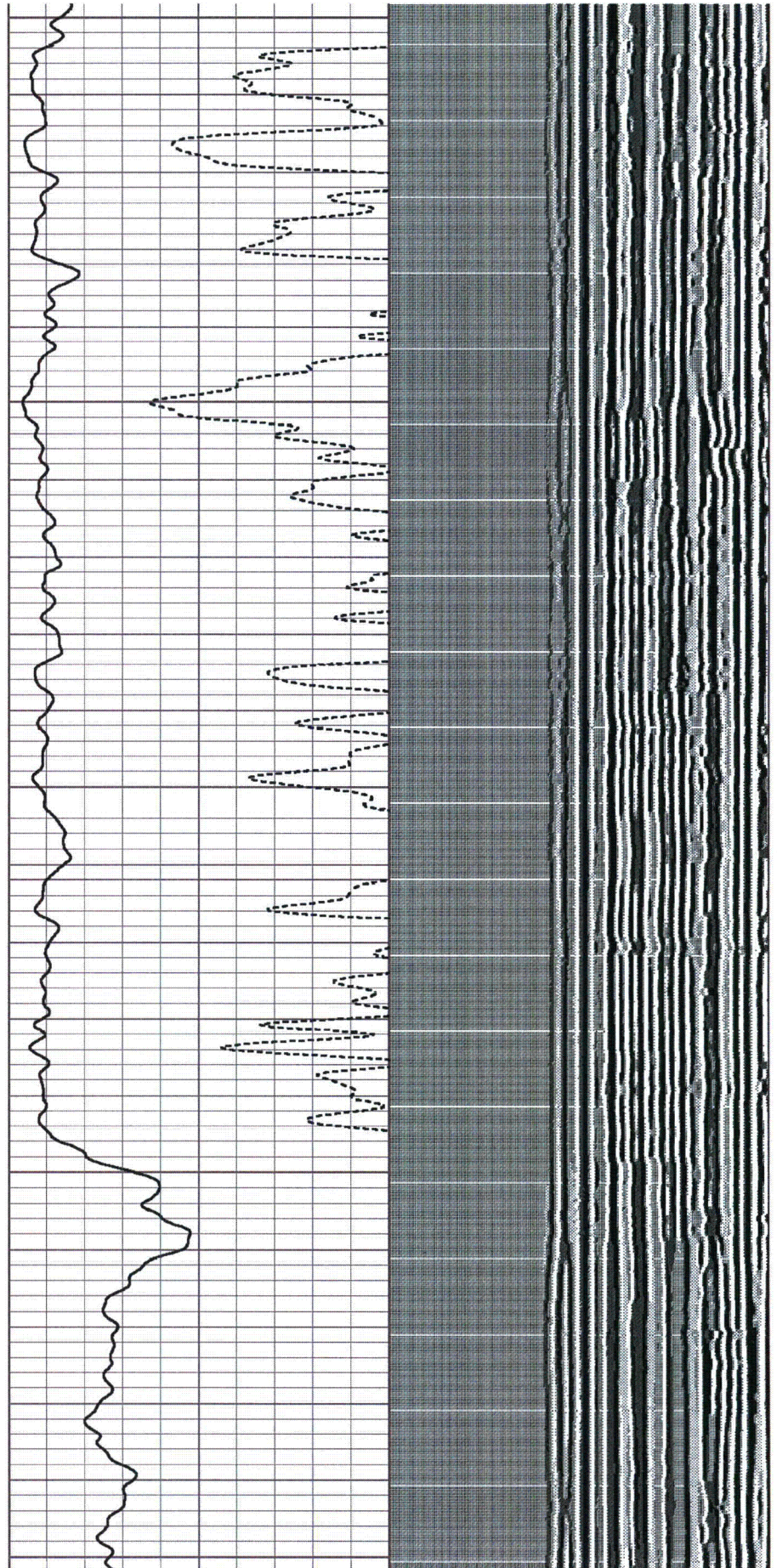
2200



2200

2300

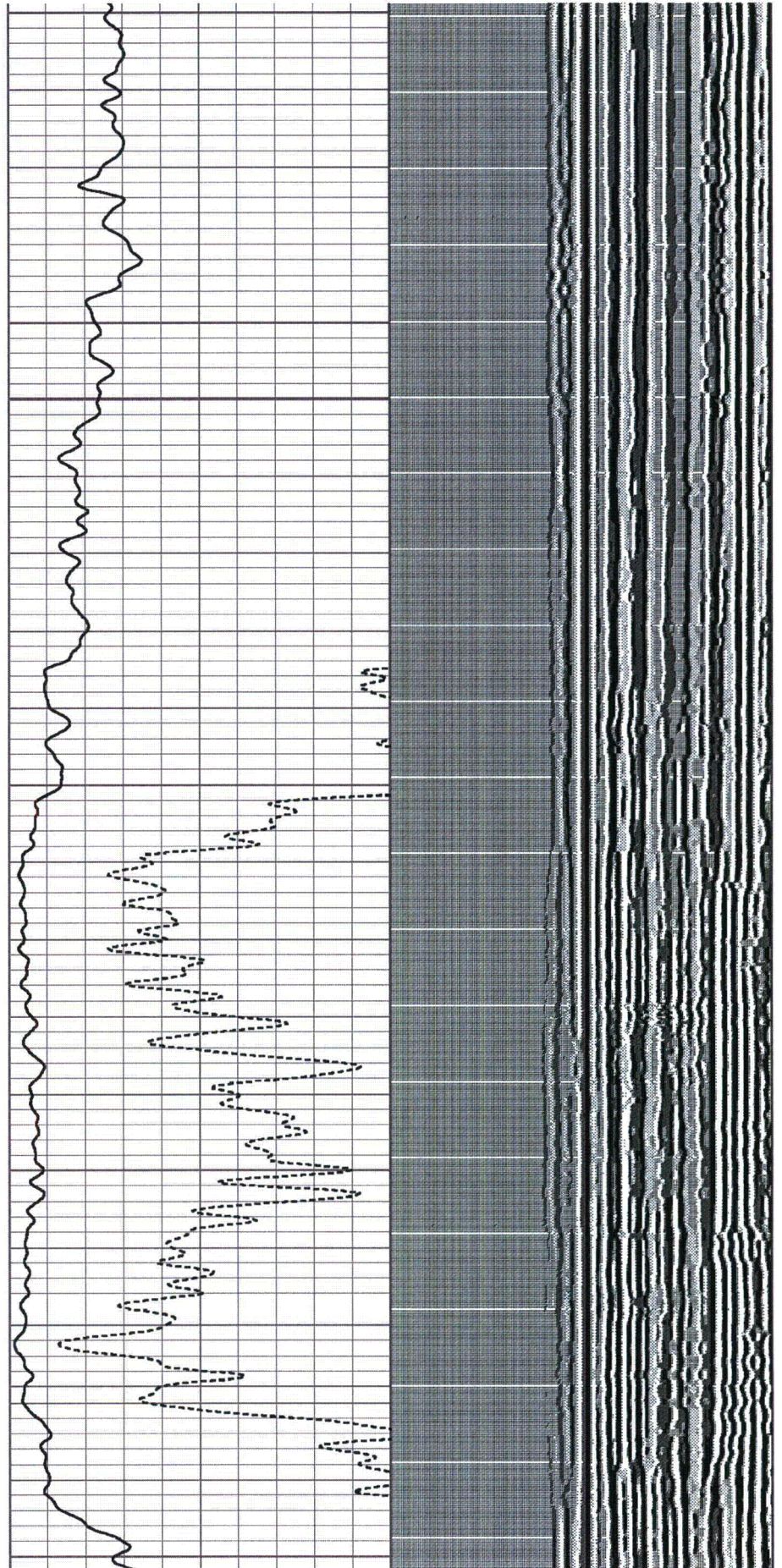
2400



2400

2500

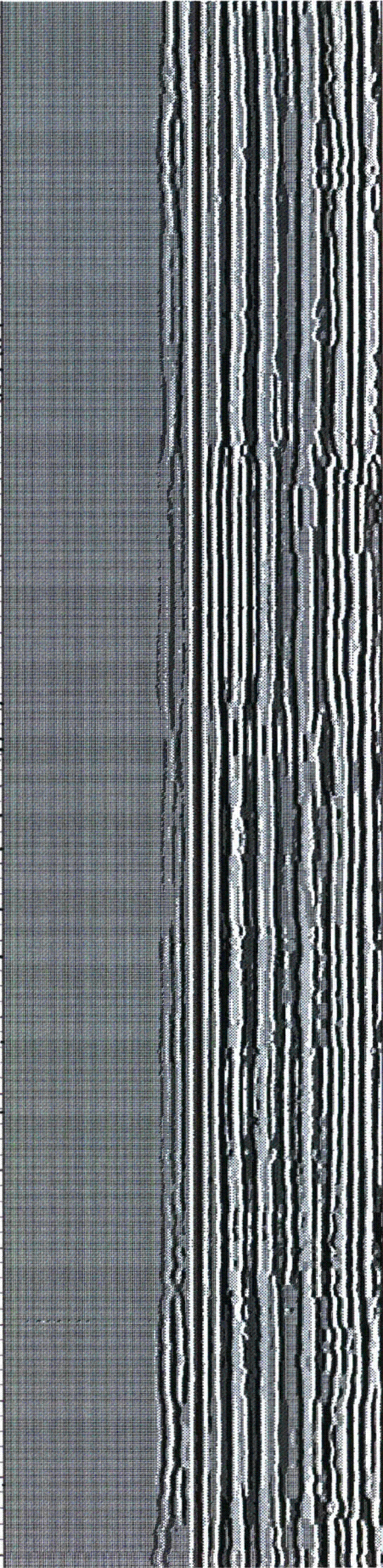
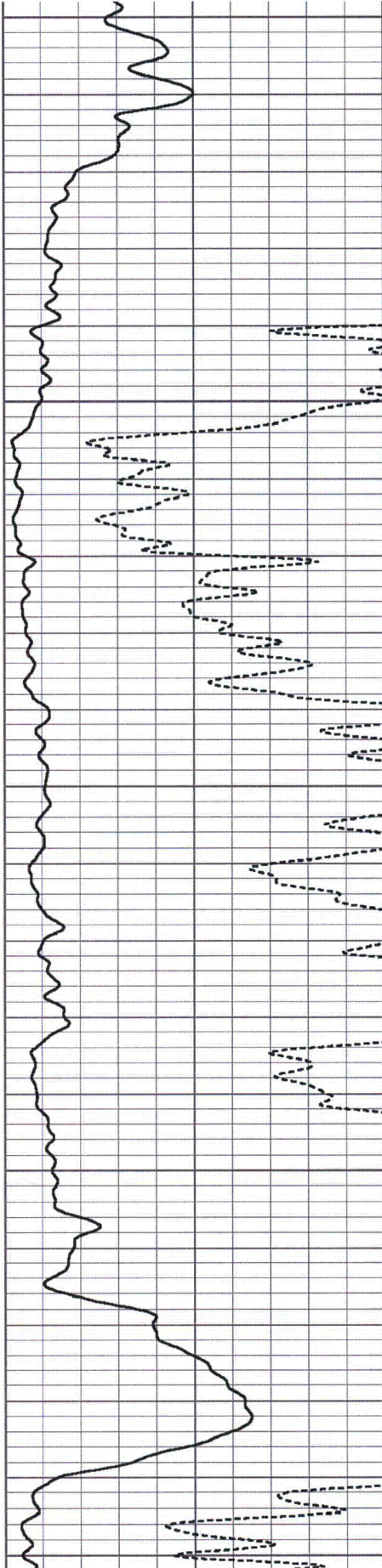
2600

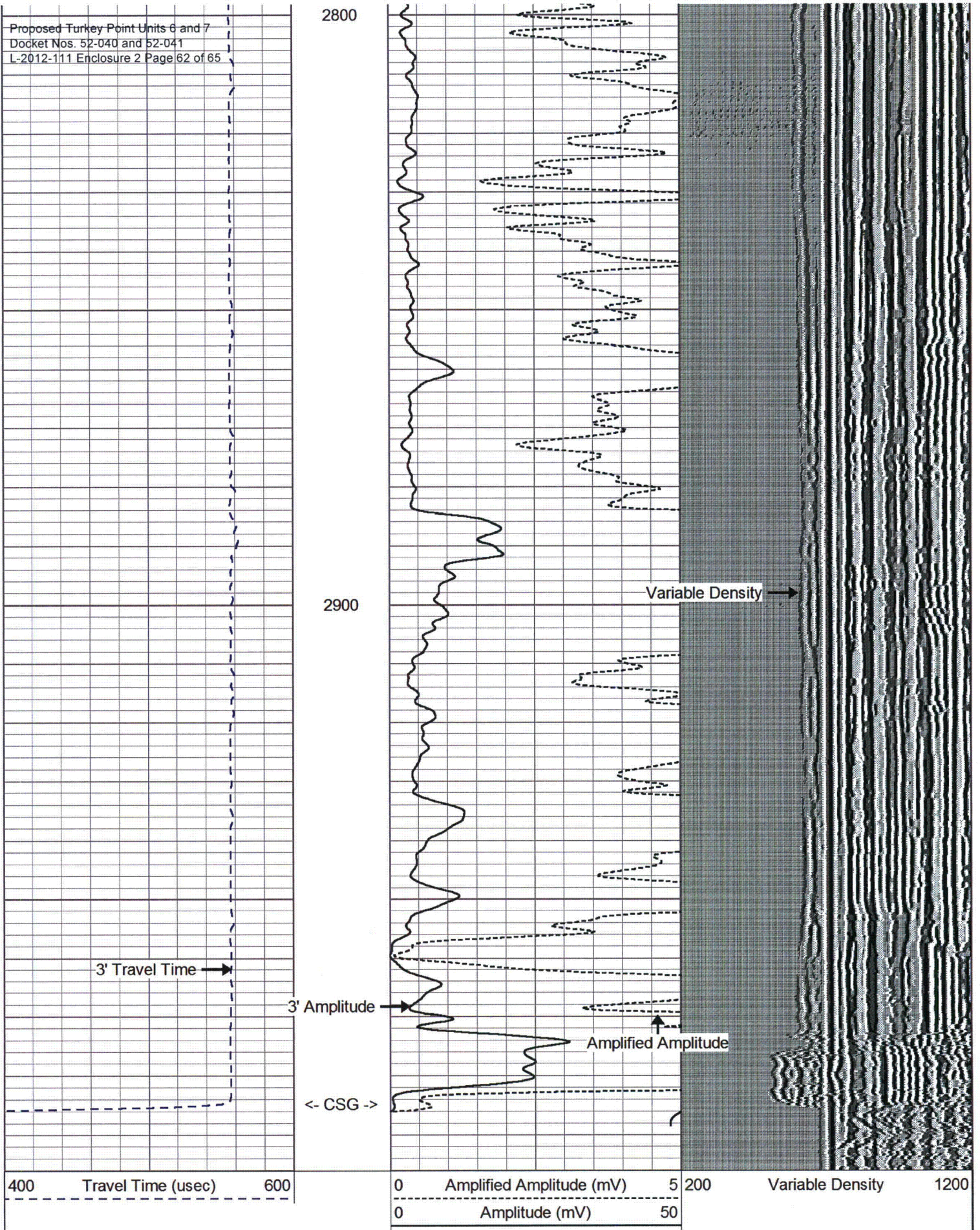


2600

2700

2800





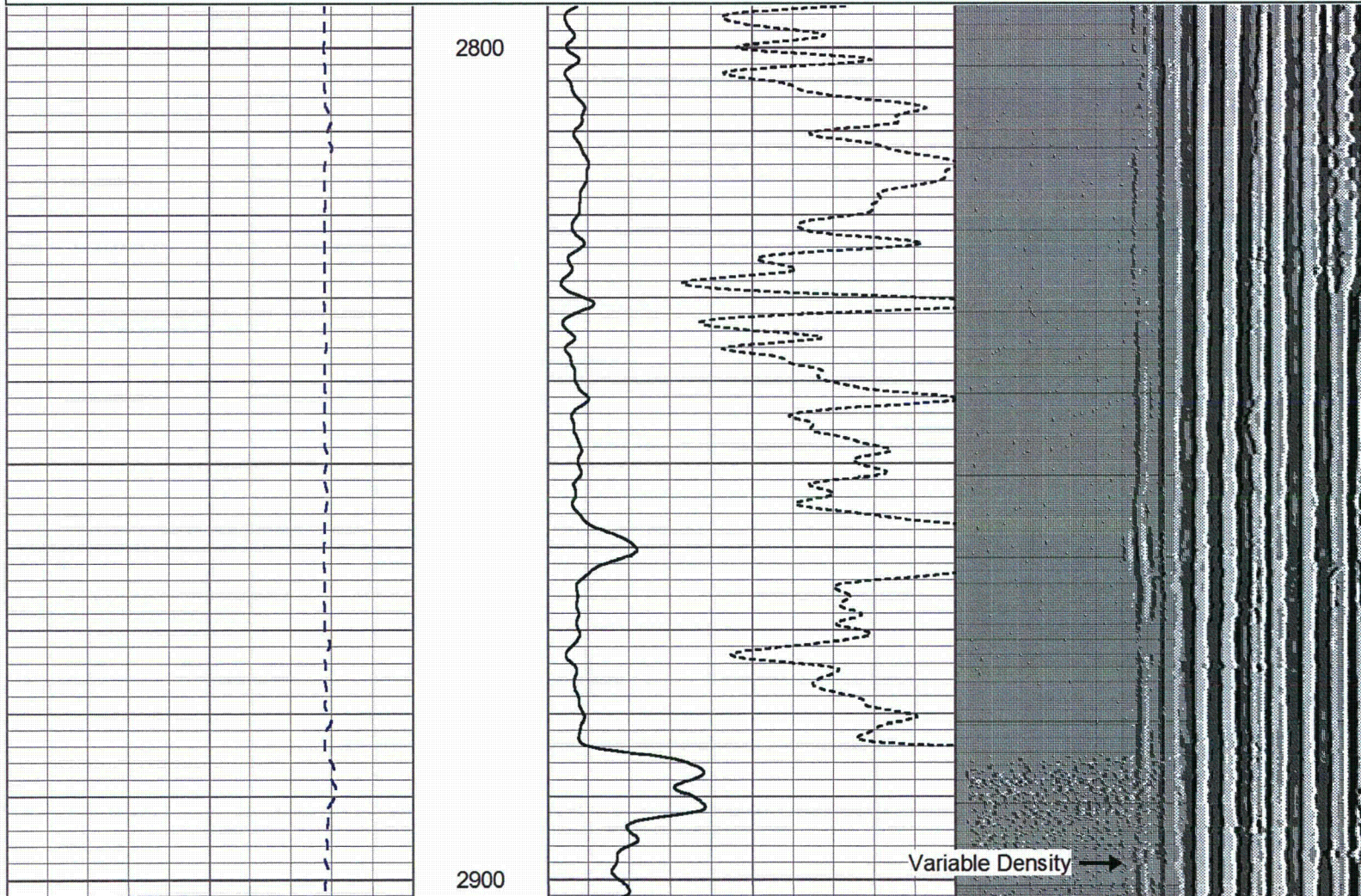
MV Geophysical

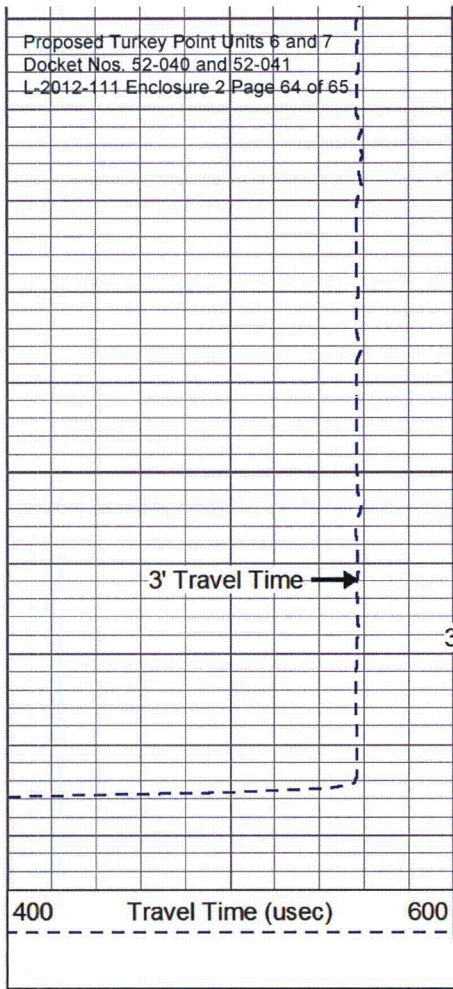
REPEAT SECTION

Database File: ltp1c.db
 Dataset Pathname: run13/REPEAT
 Presentation Format: cb124
 Dataset Creation: Wed Mar 07 15:58:21 2012
 Charted by: Depth in Feet scaled 1:240

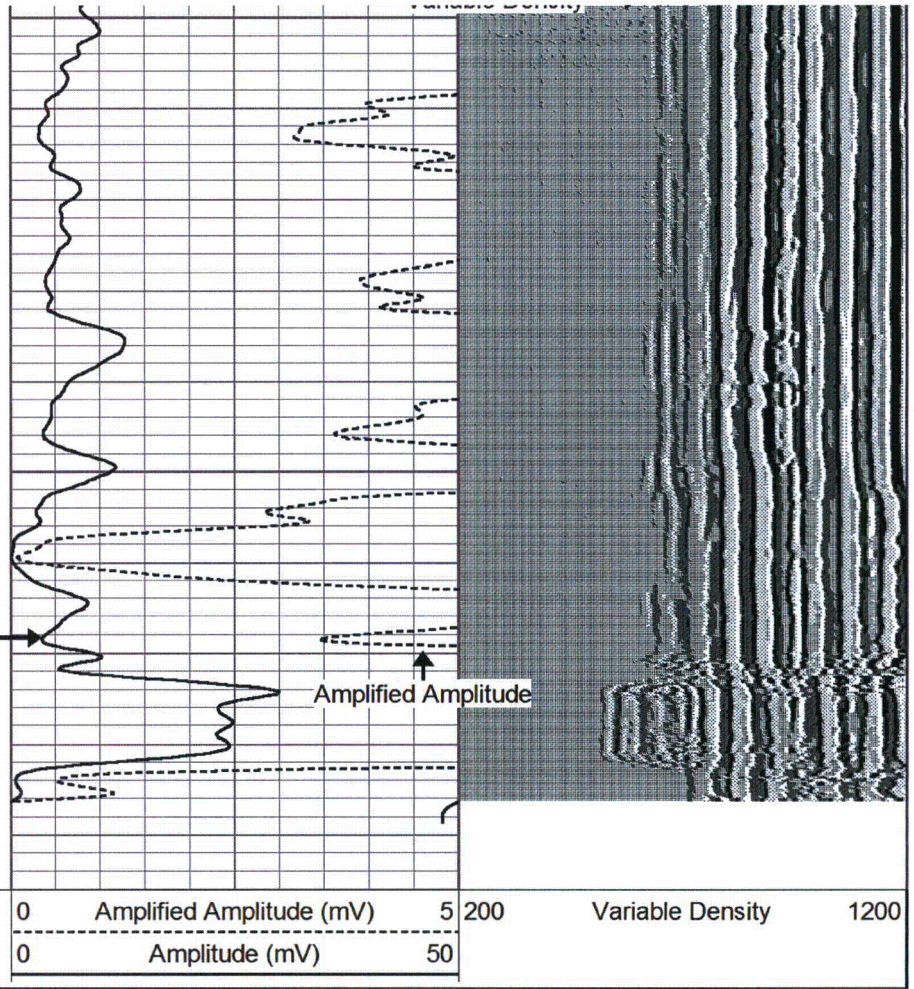
Proposed Turkey Point Units 6 and 7
 Docket Nos. 52-040 and 52-041
 L-2012-111 Enclosure 2 Page 63 of 65

400	Travel Time (usec)	600	0	Amplified Amplitude (mV)	5	200	Variable Density	1200
-----			0	Amplitude (mV)	50			





2900



Calibration Report			
Database File:	ltp1c.db		
Dataset Pathname:	run13/pass2		
Dataset Creation:	Wed Mar 07 14:38:31 2012 by Log VER_5.3		
Cement Bond Log Calibration Report			
Serial Number:	Bond366		
Tool Model:	SLT_Bond		
Performed:	Wed Mar 07 14:38:25 2012		
Depth:	272.023	ft	
Casing Diameter:	24	in	
	3' Spacing	5' Spacing	
Signal Zero:	0.35	1	mV
Calibrated Amplitude:	29.5181	29.5181	mV
Reading at Signal Zero:	0.162402	-0.205469	V
Reading in Free Pipe:	1.64111	-0.208643	V
Gain:	19.7254	-8985.4	
Offset:	-2.85344	-1845.22	

Sensor	Offset (ft)	Schematic	Description	Len (ft)	OD (in)	Wt (lb)
Proposed Turkey Point Units 6 and 7 Docket Nos. 52-040 and 52-041 L-2012-111 Enclosure 2 Page 65 of 65						
TT3 WVF3	9.83 9.83		— SLT-SLT_Bond (Bond366)	16.00	3.50	127.00
TT5 WVF5	7.83 7.83					
CCL	0.67		— CCL-MVGS 1.9 (RTS-CCL-1)	1.33	1.90	8.00

Dataset: ltp1c.db: field/well/run13/pass1
 Total Length: 17.33 ft
 Total Weight: 135.00 lb
 O.D. 3.50 in