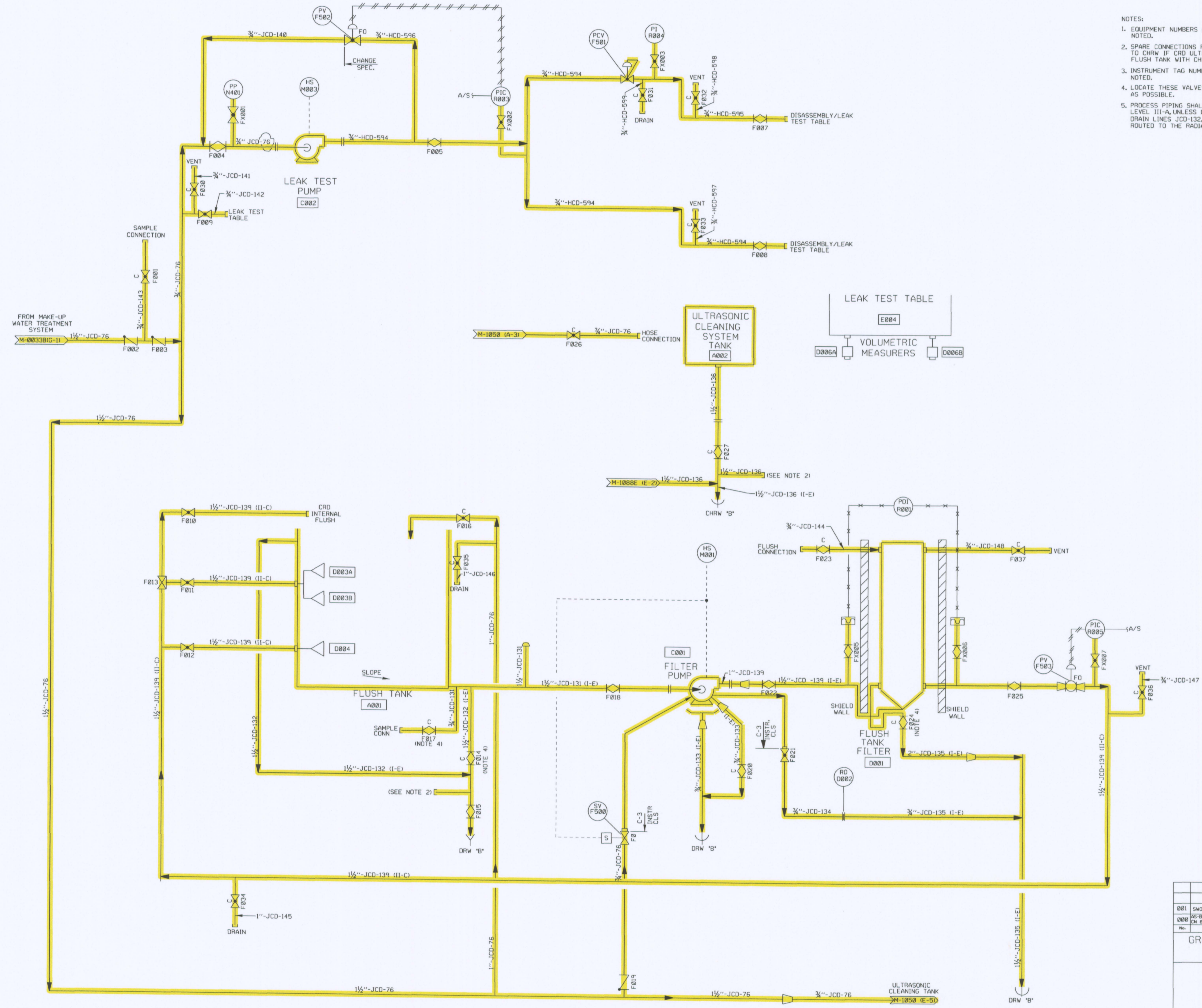


- NOTES:
- EQUIPMENT NUMBERS ARE PREFIXED BY NIG50 UNLESS OTHERWISE NOTED.
 - SPARE CONNECTIONS PROVIDED TO ROUTE FLUSH TANK DRAIN TO CHRW IF CRD ULTRASONIC CLEANING IS PERFORMED IN THE FLUSH TANK WITH CHEMICAL COMPOUNDS.
 - INSTRUMENT TAG NUMBERS ARE PREFIXED BY 1050 UNLESS OTHERWISE NOTED.
 - LOCATE THESE VALVES AS CLOSE TO THE PROCESS LINE / EQUIPMENT AS POSSIBLE.
 - PROCESS PIPING SHALL BE CLASSIFIED AS RADIATION LEVEL III-A, UNLESS OTHERWISE NOTED. EQUIPMENT DRAIN LINES JCD-132, 133, 135, 136 AND 138 SHALL BE ROUTED TO THE RADIATION CLASS B DRAINAGE SYSTEM.



| | | | | | | | |
|--|---|--------------|--------|------|------|------|---------|
| 001 | SWO CORRECTED TYPO | SLS | CHK | N/A | N/A | R/W | 1/7/94 |
| 000 | REVISION PER DCP 82/2874, CH 87/2862 AND CH 90/0109 | LS | SP | TW | JBB | R/K | 9/14/92 |
| GRAND GULF NUCLEAR STATION UNIT 1 NUCLEAR PLANT ENGINEERING | | NO. | REV | CHKD | APPV | DATE | |
| P & I DIAGRAM CRD FLUSH TANK FILTER & LEAK TEST SYSTEM UNIT 1 | | | | | | | |
| MPL No. 1050 1015M | SCALE: NONE | DRAWING No.: | M-1050 | | REV: | 001 | |
| DFN: m1050.dgn | | | | | | | |

COMPONENTS SUBJECT TO AMR
 NON-SAFETY RELATED SYSTEMS & COMPONENTS AFFECTING SAFETY RELATED SYSTEMS AMM20

| 0 | 9-29-2011 | | | | | | |
|---------------------|-----------|-------------|----|-----|-----|-----|--|
| NO. | DATE | DESCRIPTION | BY | ENG | CHK | APP | |
| REVISIONS | | | | | | | |
| LRA-M-1050 | | | | | | | |
| CAD/FILE: m1050.DGN | | | | | | | |
| MASTER FILE | | | | | | | |