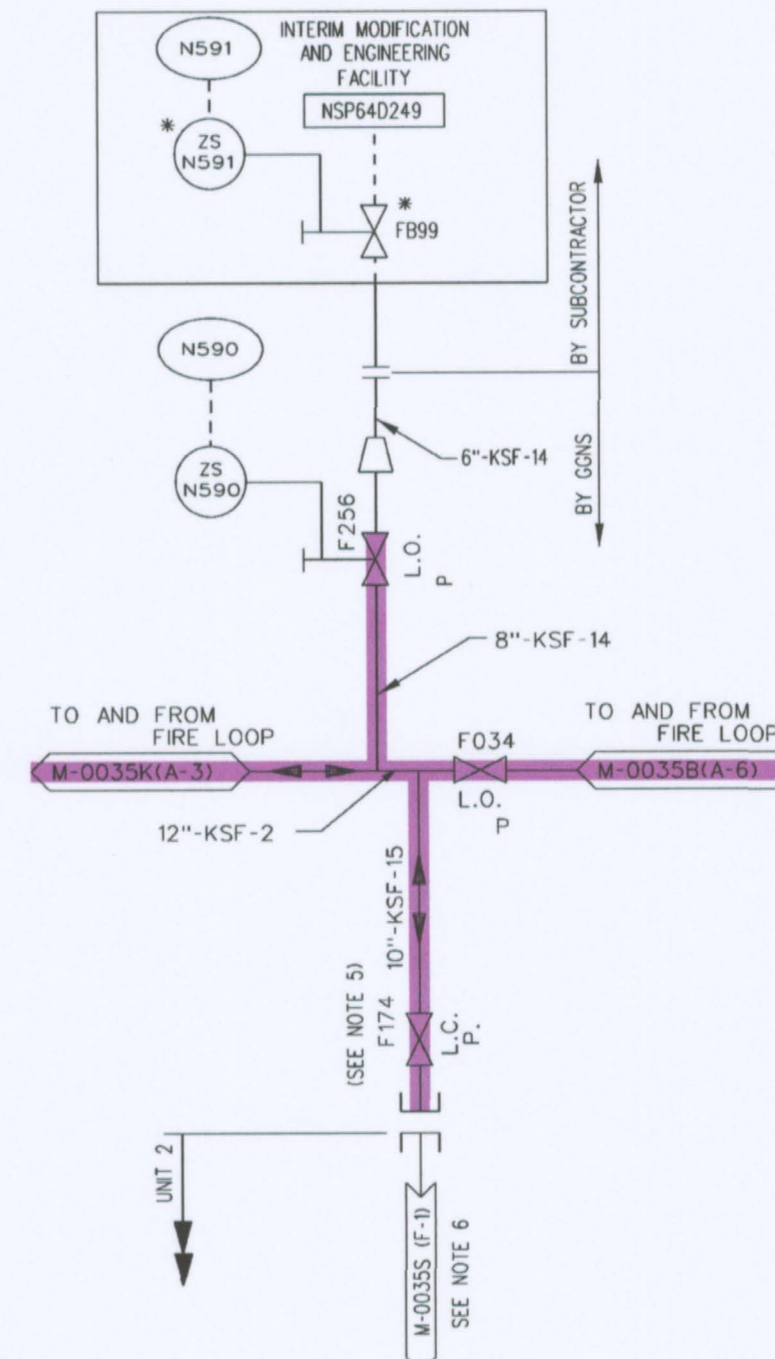
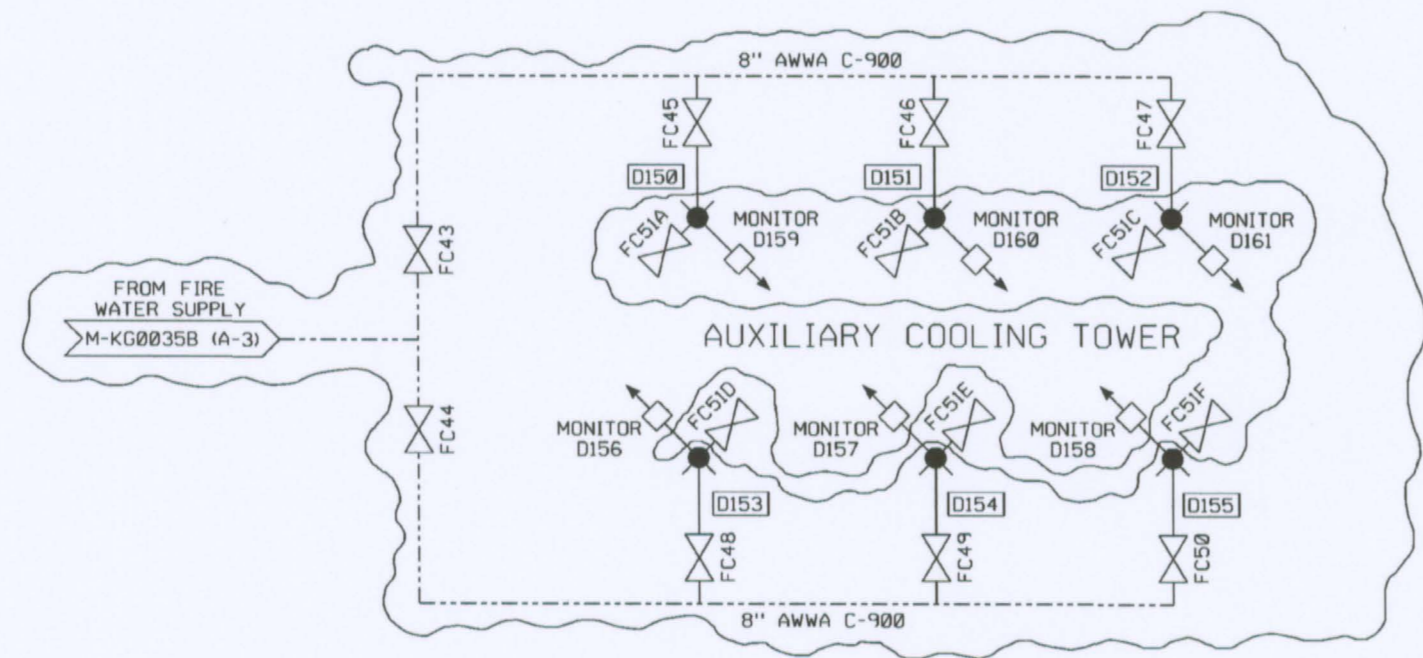


- NOTES:
- FOR GENERAL NOTES SEE DWG. M-0035A
  - FOR TYPICAL MET PIPE SPRINKLER SYSTEM, DELUGE SYSTEM, PRE-ACTION SYSTEM, VALVE CALLOUTS AND TRIM SEE DWG. M-0035J.
  - ALL DRAIN LINES ARE 1"-JBD-227 AND ALL VENT LINES ARE 3/4"-JBD-222 UNLESS OTHERWISE NOTED.
  - DELETED.
  - VALVE IS LOCKED CLOSED BECAUSE UNIT 2 PIPING IS NOT INSTALLED OR INCOMPLETE.
  - DRAWING M-0035S IS VOIDED BY MCP 92/1092. DESIGN FOR NEW UNIT 2 FIRE PROTECTION SYSTEMS IS PROVIDED ON VENDOR DRAWINGS DEVELOPED BY UNITED PIPING SYSTEMS, INC., UNDER CONTRACT G-3479. REFERENCE FACILITIES PROJECTS PACKAGE NO. 92-001, "UNIT 2 FP UPGRADE", FOR DETAILS.



No.	REVISIONS	DATE	REV	ENG	CHK	APP	DATE
017	AS-BUILT PER ER 2000-0792-015, ERCN-001		WC	N/A	N/A	BJ	HDB 7/28/03
016	AS-BUILT PER DRN 7249		WC	N/A	N/A	JRB	SF 10/12/00

GRAND GULF NUCLEAR STATION  
UNIT 1  
NUCLEAR PLANT ENGINEERING

**UPDATED FINAL SAFETY ANALYSIS REPORT**  
FIGURE NUMBER - 9.5-008C

P. & I. DIAGRAM  
FIRE PROTECTION SYSTEM  
UNIT 1

SCALE:	DRAWING No.	REV.
NONE	M-0035L	017

COMPONENTS SUBJECT TO AMR

FIRE PROTECTION WATER SYSTEM AMM15

NON-SAFETY RELATED SYSTEMS & COMPONENTS AFFECTING SAFETY RELATED SYSTEMS AMM20

NO. DATE		DESCRIPTION		BY	ENG	CHK	APP
REVISIONS							
<b>LRA-M-0035L</b>							
CAD FILE: m0035L.DGN							
MASTER FILE:							

D118