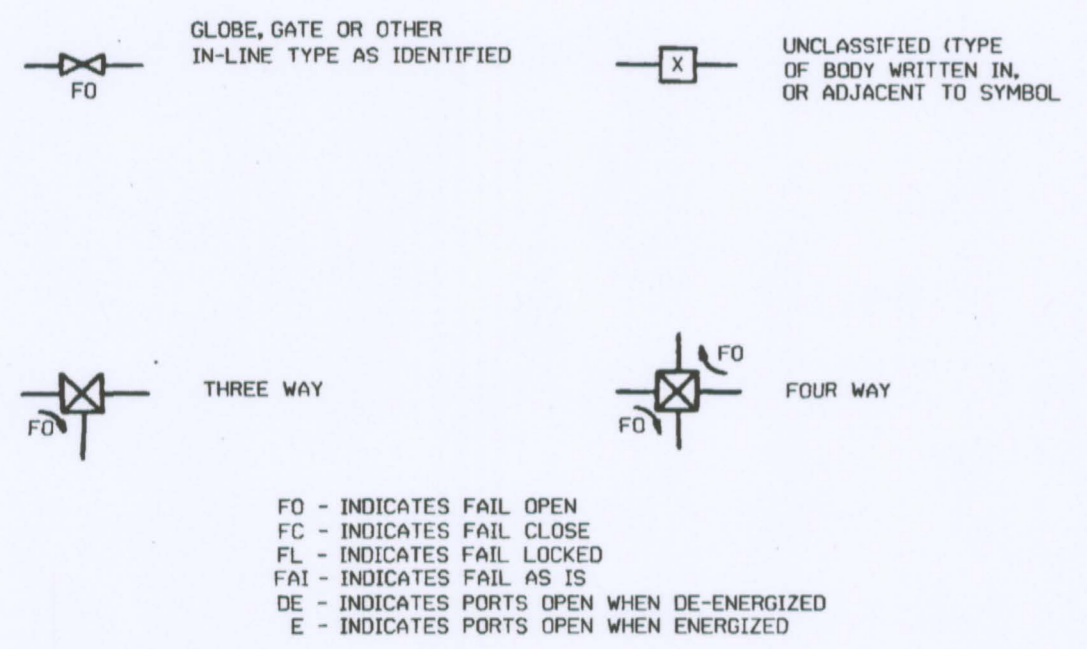


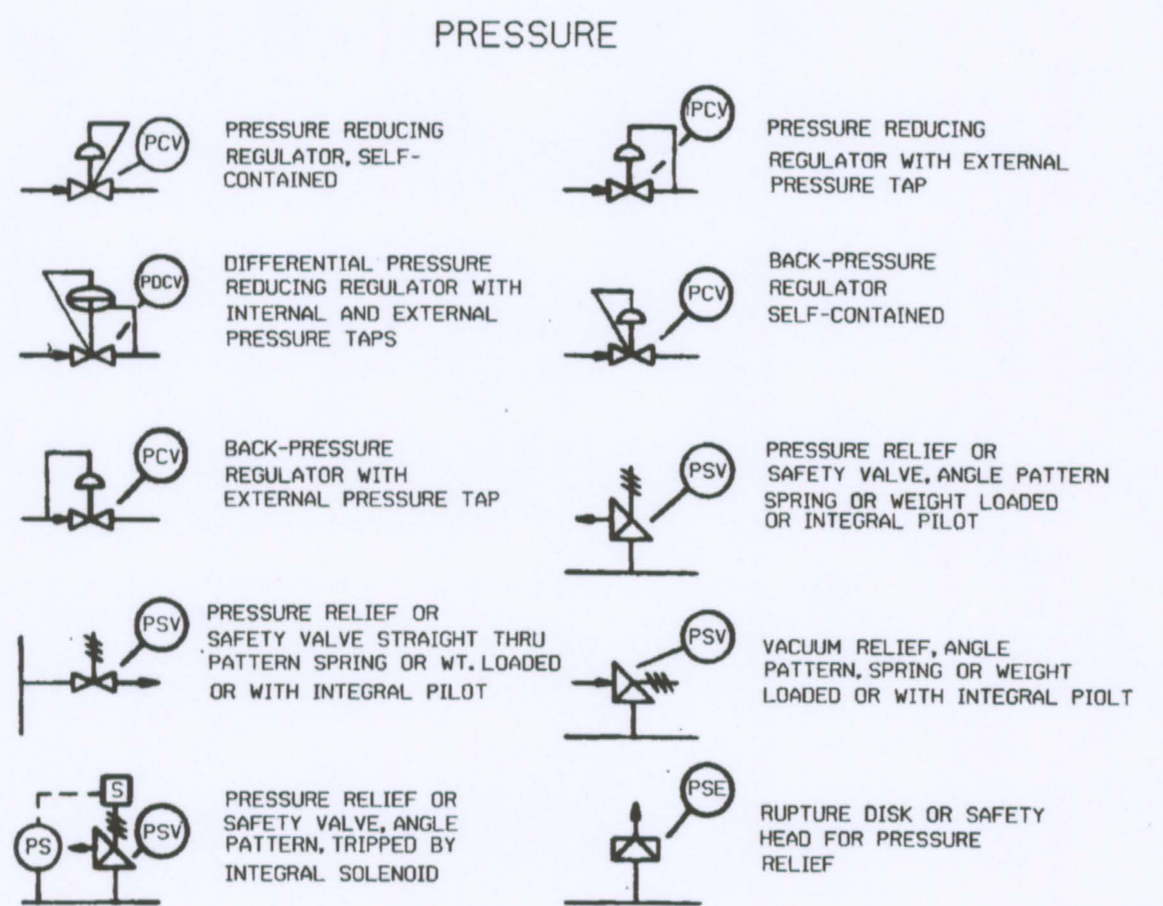
Table with columns: FIRST LETTER, MEASURED VARIABLE, SYMBOLS FOR MEASURED VARIABLES, DISPLAY DEVICES, CONTROLLING DEVICES, SENSING DEVICES, LOCAL OBSERVATION CLASS, TEST CONNECTION, RELAY OR CONVERTER. Includes rows for variables like ANALYSIS, BURNER FLAME, CONDUCTIVITY, etc.

- NOTES: (1) 'A' IS USED FOR ALL ANALYTICAL VARIABLES... (2) A USER'S CHOICE LETTER IS INTENDED TO COVER A MEANING THAT WOULD BE USED REPEATIVELY... (3) THE EQUATION OF DESCRIPTION DENOTING THE FUNCTION OF THE RELAY 'Y' SHOULD BE SHOWN ON THE P&ID... (4) 'X' IS USED TO REPRESENT ANY 'SPECIAL' VARIABLES... (5) WHEN 'Q' IS USED AS A SECOND OR SUCCEEDING LETTER IT DENOTES AN INTEGRATING MODIFIER... (6) STARTUP AND SHUTDOWN DEVICES ARE USUALLY BLIND, BUT MAY BE INDICATING OR RECORDING... (7) THE DESIGNATION 'AJ' (J) MAY DENOTE A SCANNING ANALYZER INDICATOR, RECORDER, TRANSMITTER, ETC... (8) 'TW' DENOTES AN EMPTY THERMOWELL... (9) PRESSURE RELIEF VALVES AND RUPTURE DISKS SHALL BE IDENTIFIED AS 'PSV' AND 'PSE' RESPECTIVELY... (10) 'RO' IS USED TO DESIGNATE A RESTRICTION ORIFICE... (11) FOR DEVICES OTHER THAN CONTROL VALVES, SUCH AS HYDRAULIC COUPLINGS, VARIABLE SPEED DRIVES, ETC... (12) HIGH-HIGH ALARMS WILL BE DESIGNATED '() AH' AND LOW-LOW ALARMS '() AL'. FOR EXAMPLE LAHH DENOTES 'HIGH-HIGH LEVEL ALARMS'. (13) FUNCTION REPRESENTED BY THE FOLLOWING SYMBOLS: (14) THE DESIGNATION 'HSS' DENOTES HAND SELECTOR SWITCH (15) FOR INDICATING CONTROLLERS 'I' IS SUBSTITUTED FOR 'R' IN RECORDING CONTROLLERS.

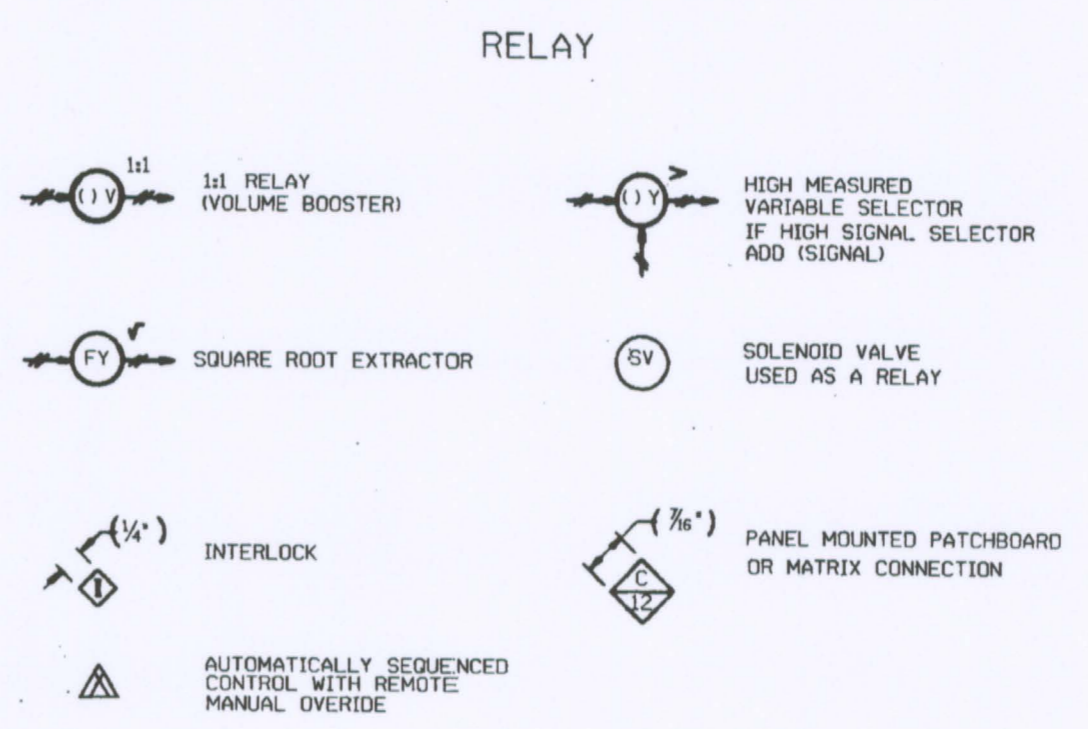
CONTROL VALVE BODIES



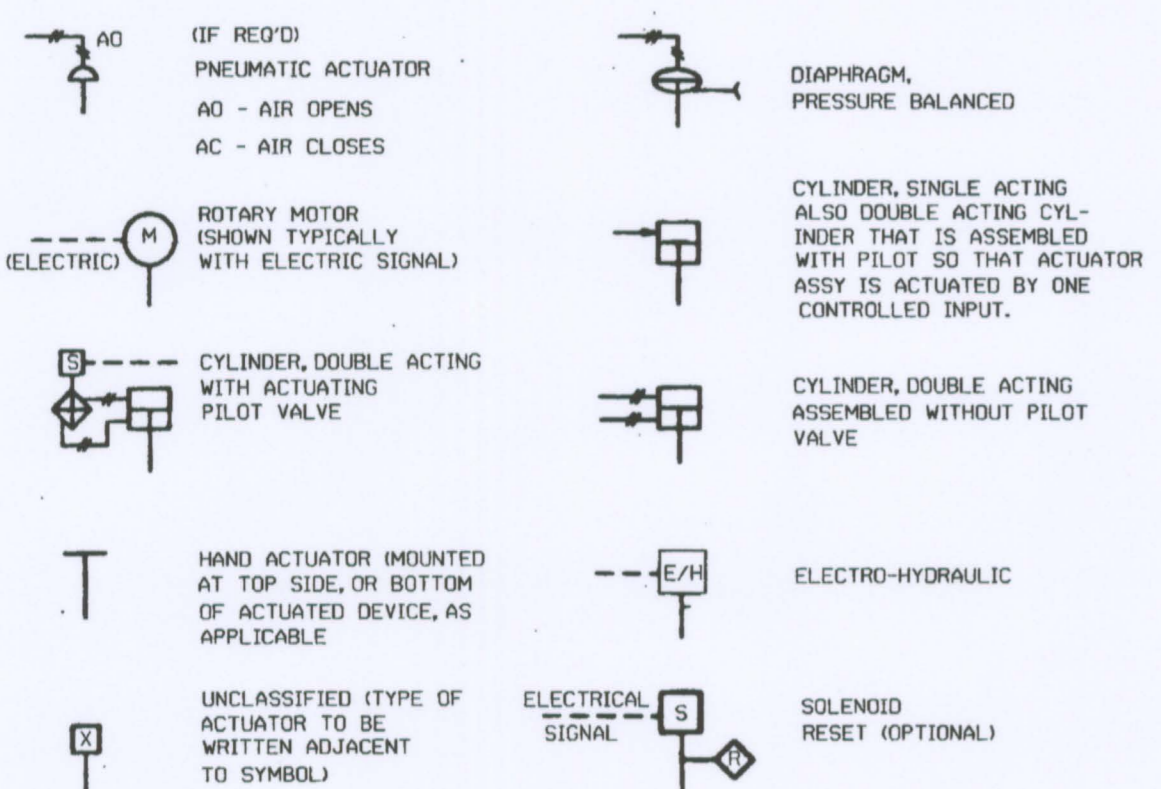
SELF-ACTUATING DEVICES



MISCELLANEOUS

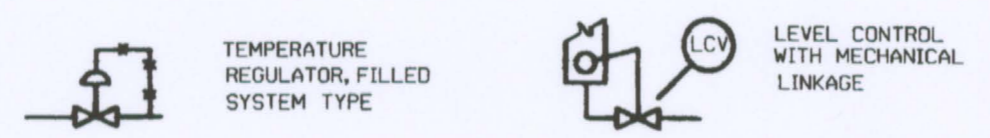


ACTUATORS

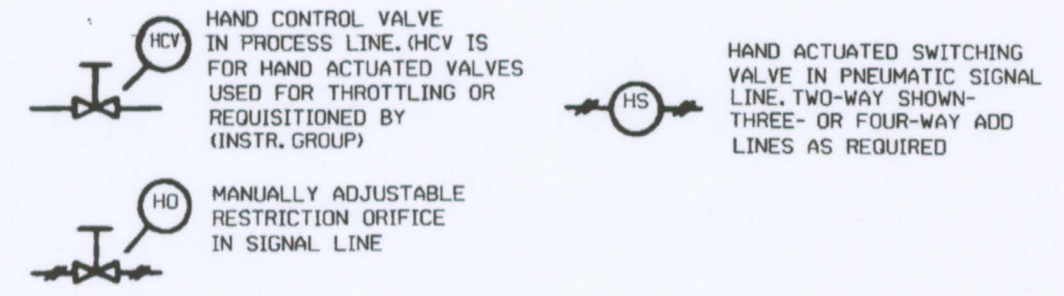


TEMPERATURE

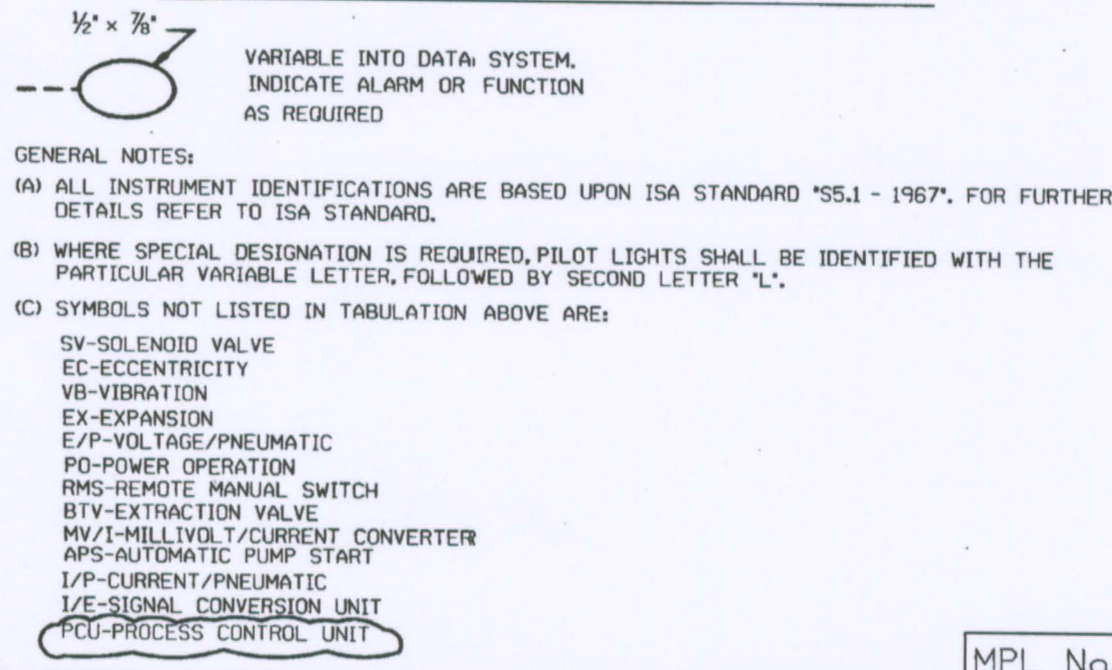
LEVEL



HAND



DIGITAL DATA SYSTEM - COMPUTER



- GENERAL NOTES: (A) ALL INSTRUMENT IDENTIFICATIONS ARE BASED UPON ISA STANDARD 'S5.1 - 1967'. FOR FURTHER DETAILS REFER TO ISA STANDARD. (B) WHERE SPECIAL DESIGNATION IS REQUIRED, PILOT LIGHTS SHALL BE IDENTIFIED WITH THE PARTICULAR VARIABLE LETTER, FOLLOWED BY SECOND LETTER 'L'. (C) SYMBOLS NOT LISTED IN TABULATION ABOVE ARE:

Table with columns: REV, DATE, APPR, DATE. Includes revision history for the drawing.

GRAND GULF NUCLEAR STATION UNIT 1 NUCLEAR PLANT ENGINEERING. UPDATED FINAL SAFETY ANALYSIS REPORT FIGURE NUMBER - 1.8-002. P & I DIAGRAM LEGEND UNITS 1 & 2. SCALE: NONE. DRAWING NO. M-0030B. REV. 4. DFN: m0030b.dgn

T106