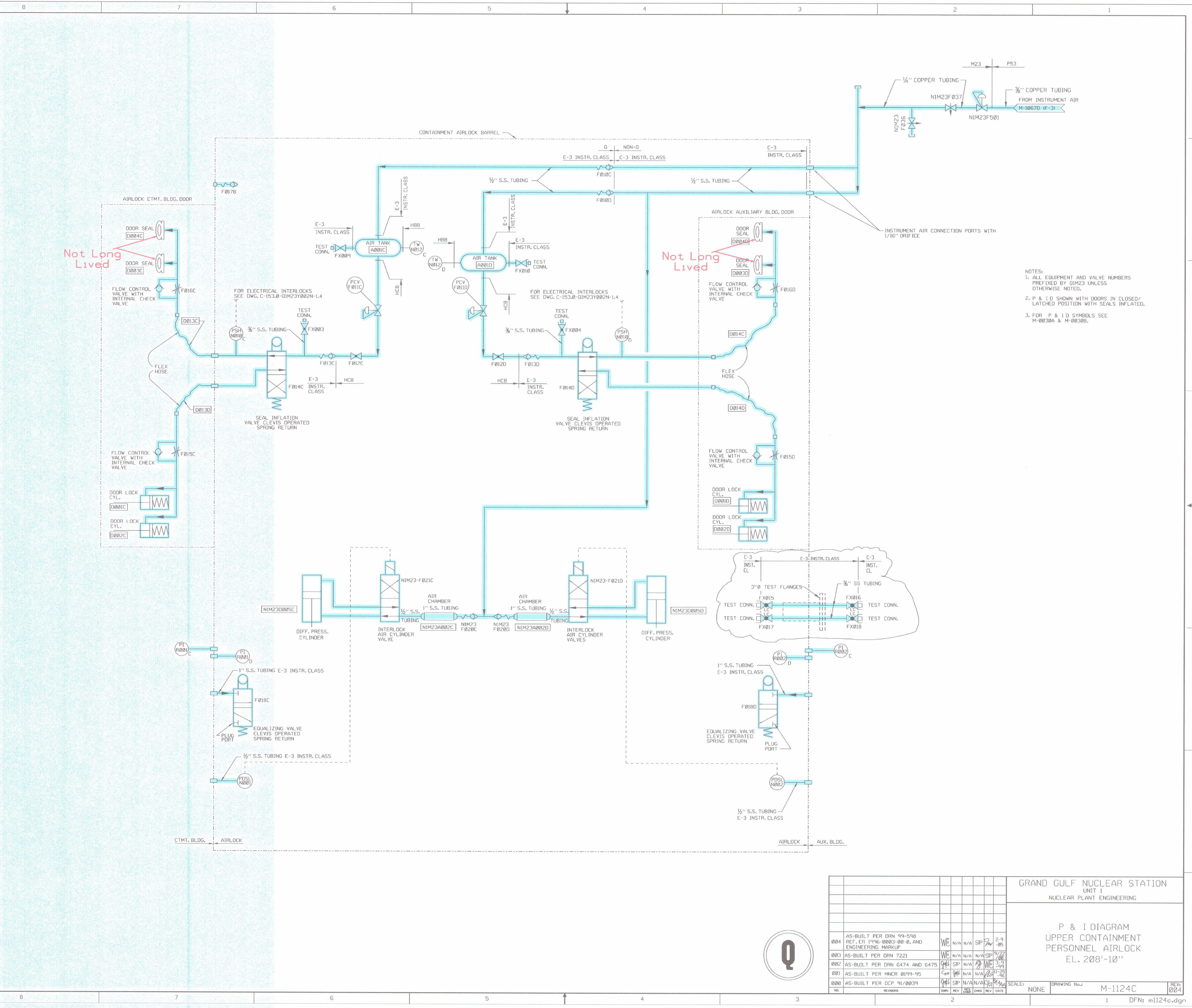


H
G
F
E
D
C
B
A



- NOTES:
1. ALL EQUIPMENT AND VALVE NUMBERS PREFIXED BY QIM23 UNLESS OTHERWISE NOTED.
 2. P & I D SHOWN WITH DOORS IN CLOSED/LATCHED POSITION WITH SEALS INFLATED.
 3. FOR P & I D SYMBOLS SEE M-0030A & M-0030B.

NO.	DATE	DESCRIPTION	BY	ENG	CHK	APP
004	10-13-2011	AS-BUILT PER DRN 99-598 REF: E-3 INSTR. CLASS AND ENGINEERING MARKUP	WC	N/A	N/A	SP 2-9-95
003		AS-BUILT PER DRN 7221	WC	N/A	N/A	SP 9/22/98
002		AS-BUILT PER DRN 6474 AND 6475	WC	N/A	N/A	SP 3-3-94
001		AS-BUILT PER MNCR 0199-95	WC	N/A	N/A	SP 11-22-95
000		AS-BUILT PER DCP '91/0039	WC	N/A	N/A	SP 9/16/91

GRAND GULF NUCLEAR STATION
 NUCLEAR PLANT ENGINEERING
 UNIT 1
 P & I DIAGRAM
 UPPER CONTAINMENT
 PERSONNEL AIRLOCK
 EL. 208'-10"

SCALE: NONE
 DRAWING No.: M-1124C
 REVISIONS: 004

COMPONENTS SUBJECT TO AMR
 UNIT 1
 COMPRESSED AIR SYSTEMS
 AMM27

NO.	DATE	DESCRIPTION	BY	ENG	CHK	APP
REVISIONS						
LRA-M-1124C						
DRAWING: m1124c.dgn						
INTERFILE						

