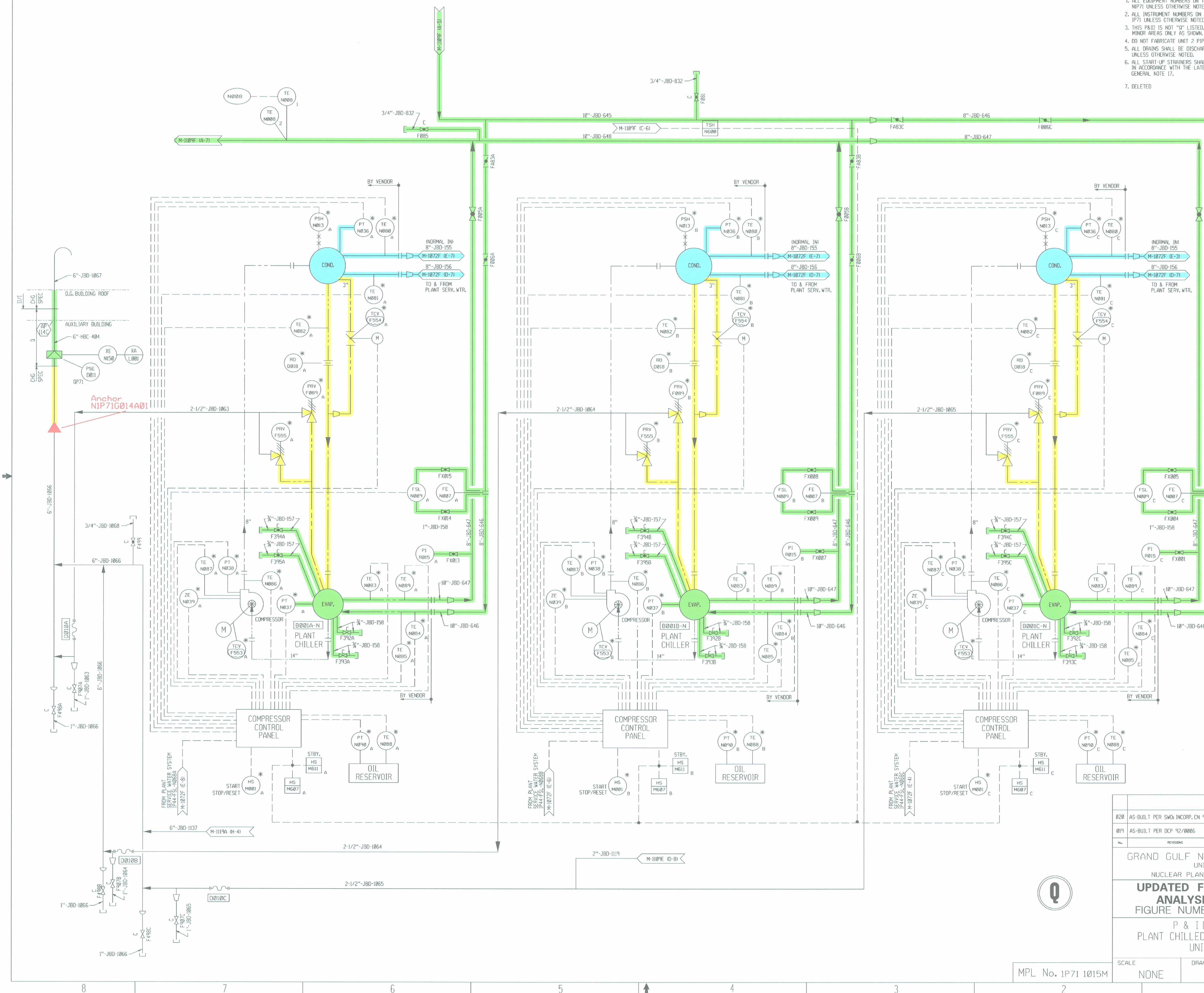


- NOTES:
1. ALL EQUIPMENT NUMBERS ON THIS DRAWING ARE PREFIXED BY NP71 UNLESS OTHERWISE NOTED.
 2. ALL INSTRUMENT NUMBERS ON THIS DRAWING ARE PREFIXED BY IP71 UNLESS OTHERWISE NOTED.
 3. THIS FIELD IS NOT "0" LISTED. "0" IDENTIFICATION IS FOR MINOR AREAS ONLY AS SHOWN.
 4. DO NOT FABRICATE UNIT 2 PIPING BEYOND COLUMN LINE 20.
 5. ALL DRAINS SHALL BE DISCHARGED TO NEARBY CHRW ONLY UNLESS OTHERWISE NOTED.
 6. ALL START-UP STRAINERS SHALL BE REPLACED BY RING SPACERS IN ACCORDANCE WITH THE LATEST REVISION OF '645-HS-03 GENERAL NOTE 17.
 7. DELETED



- COMPONENTS SUBJECT TO AMR
- PLANT CHILLED WATER SYSTEM AMM14
 - NON-SAFETY RELATED SYSTEMS & COMPONENTS AFFECTING SAFETY RELATED SYSTEMS AMM20
 - PLANT SERVICE WATER SYSTEM AMM29

020	AS-BUILT PER SWO: INCORP. DN 9/7/2019	WE	N/A	N/A	GH	PH	9-21-02
019	AS-BUILT PER DCP 92/2006	WE	N/A	N/A	PH	PH	12-8-97
REV	REVISION	ENR	REV	ISS	CHKD	APPR	DATE

GRAND GULF NUCLEAR STATION
 UNIT 1
 NUCLEAR PLANT ENGINEERING
UPDATED FINAL SAFETY ANALYSIS REPORT
 FIGURE NUMBER - 09.2-017
 P & I DIAGRAM
 PLANT CHILLED WATER SYSTEM
 UNIT 1

SCALE: NONE DRAWING No. M-1109A REV. 020

0	10-13-2011						
NO.	DATE	DESCRIPTION	BY	ENG	CHK	APP	
REVISIONS							
LRA-M-1109A							
CADFILE: m1109a.dgn							
PAPERFILE:							

Done