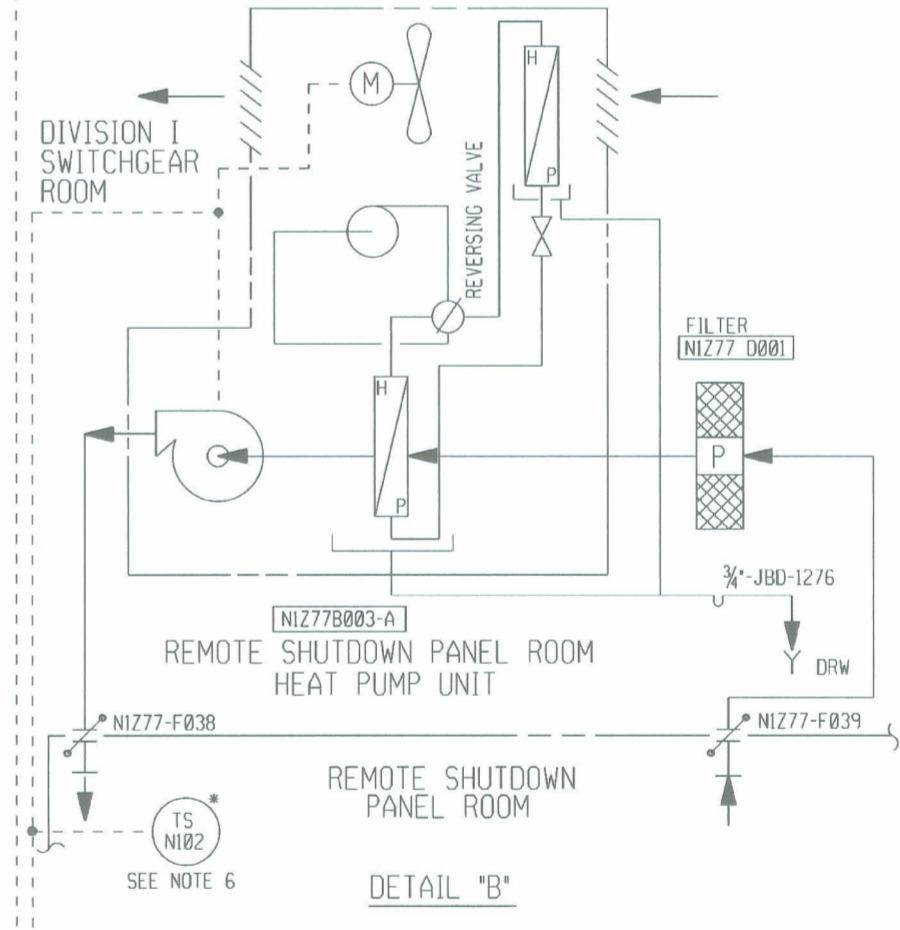


- NOTES:
1. ALL EQUIPMENT NUMBERS ON THIS DRAWING ARE PREFIXED BY 0177 UNLESS OTHERWISE NOTED.
 2. ALL INSTRUMENT NUMBERS ON THIS DRAWING ARE PREFIXED BY 1277 UNLESS OTHERWISE NOTED.
 3. FOR HVAC LEGEND SEE M-0047.
 4. FIS WITH "S" SYMBOL DENOTES SQUARE ROOT SCALE ONLY.
 5. ALL PIPING 2" AND SMALLER IS CLASSIFIED AS 111 "A" RADIATION LEVEL.
 6. TS-N012 INCLUDES ON/OFF CONTROLS AND HEAT PUMP SELECTION SWITCH.

FIRE DAMPER	DRAWING LOCATION
F007	(F-2)
F008	(F-2 & B-4)
F009	(F-2)
F010	(F-2 & C-6)
F011	(F-2 & C-6)
F012	(F-2 & C-6)
F013	(F-2 & C-6)
F014	(F-2 & B-4)
F015	(F-2 & D-4)
F016	(F-2 & D-4)
F017	(F-2 & D-4)
F018	(F-2 & D-4)
F019	(F-2)
F020	(F-2)
F021	(F-2)
F022	(B-4)
F023	(C-6 & B-4)
F024	(C-6 & B-4)
F025A	(F-2)
F025B	(F-2)
F026A	(C-6)
F026B	(C-6)
F027	(C-6)
F028	(C-6)
F029	(C-6)
F030	(C-6)
F031	(C-6)
F032	(C-6)
F033	(C-6)
F037	(F-2, C-6)
Q2777F037	(F-2, C-6)
Q2777F038	(C-6)
N177-F038	(F-2 & C-2)
N177-F039	(F-2 & C-1)



NO.	DESCRIPTION	DATE	BY	CHK	APP
012	AS-BUILT PER DRN 7723		WE	N/A	N/A
011	AS-BUILT PER DRN 7367		WE	N/A	N/A
010	AS-BUILT PER DRN 7215 AND 7216		WE	N/A	N/A
009	AS-BUILT PER DRN 6480 AND 6481		WE	N/A	N/A
008	AS-BUILT PER DRN 6189		WE	N/A	N/A
007	REBRAIN FOR LEGIBILITY AS-BUILT PER 97/0084 AND DRN 5868		WE	N/A	N/A

GRAND GULF NUCLEAR STATION
 UNIT 1
 NUCLEAR PLANT ENGINEERING
UPDATED FINAL SAFETY ANALYSIS REPORT
 FIGURE NUMBER - 9.4-008A
 P & I DIAGRAM
 SAFEGUARD SWGR. & BATTERY ROOMS
 VENTILATION SYSTEM-UNIT1

SCALE: NONE
 DRAWING No. M-1108A
 REV. 012

- COMPONENTS SUBJECT TO AMR
- HEATING, VENTILATION AND AIR CONDITIONING SYSTEMS AMM17
 - NON-SAFETY RELATED SYSTEMS & COMPONENTS AFFECTING SAFETY RELATED SYSTEMS AMM20
 - CONTROL ROOM VENTILATION SYSTEM AMM24

NO.	DATE	DESCRIPTION	BY	ENG	CHK	APP
REVISIONS						
LRA-M-1108A						
DRAWN: m1108a.DGN						
MASTERFILE						

10/13/2011