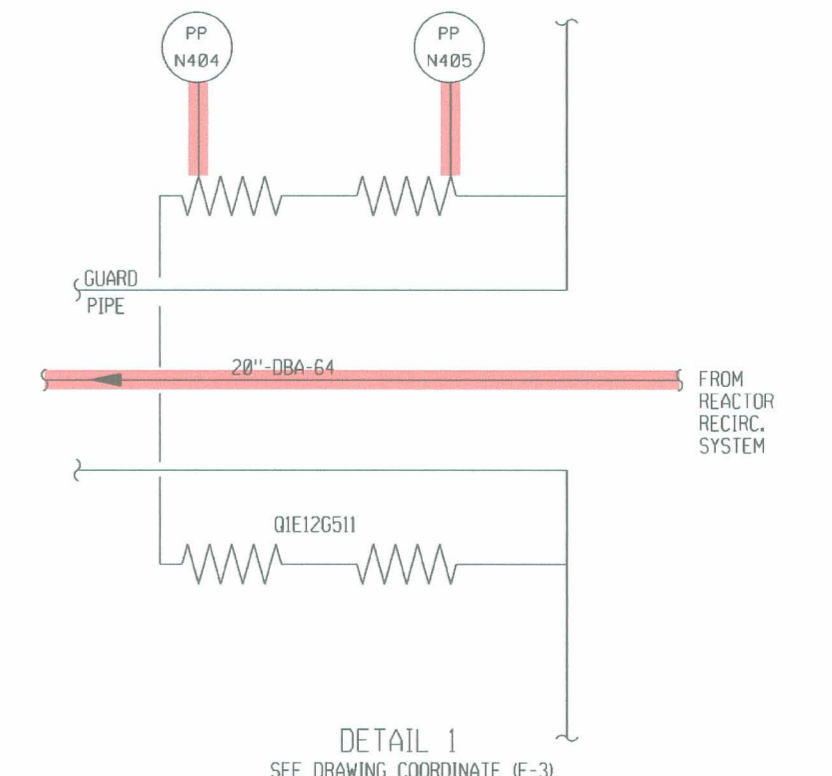


NOTES:  
 1. FOR NOTES, SEE DRAWING M-1085C.  
 2. IE12F026A IS ELECTRICALLY DISABLED IN THE CLOSED POSITION PER ER-DG-2002-0426-002.



- COMPONENTS SUBJECT TO AMR
- █ REACTOR COOLANT SYSTEM PRESSURE BOUNDARY AMM03
  - █ RESIDUAL HEAT REMOVAL SYSTEM AMM06
  - █ NON-SAFETY RELATED SYSTEMS & COMPONENTS AFFECTING SAFETY RELATED SYSTEMS AMM20
  - █ FUEL POOL COOLING AND CLEANUP SYSTEM AMM21
  - █ CONDENSATE & REFUELING WATER STORAGE & TRANSFER SYSTEM AMM23

060	AS-BUILT PER DRN 04-1052	WE	N/A	N/A	SP	7-7-05
059	AS-BUILT PER DRN 04-1050	WE	N/A	N/A	SP	7-8-04
GRAND GULF NUCLEAR STATION UNIT 1 NUCLEAR PLANT ENGINEERING <b>UPDATED FINAL SAFETY ANALYSIS REPORT</b> FIGURE NUMBER - 5.4-017						
P & I DIAGRAM RESIDUAL HEAT REMOVAL SYSTEM						
SCALE		DRAWING No.		REV.		
NONE		M-1085B		060		
MPL No. IE12 1015M						
DFN: m1085b.dgn						

REVISIONS						
NO.	DATE	DESCRIPTION	BY	ENG	CHK	APP
<b>LRM-1085B</b>						
CAD FILE: m1085b.dgn						
MASTER FILE						

1009