

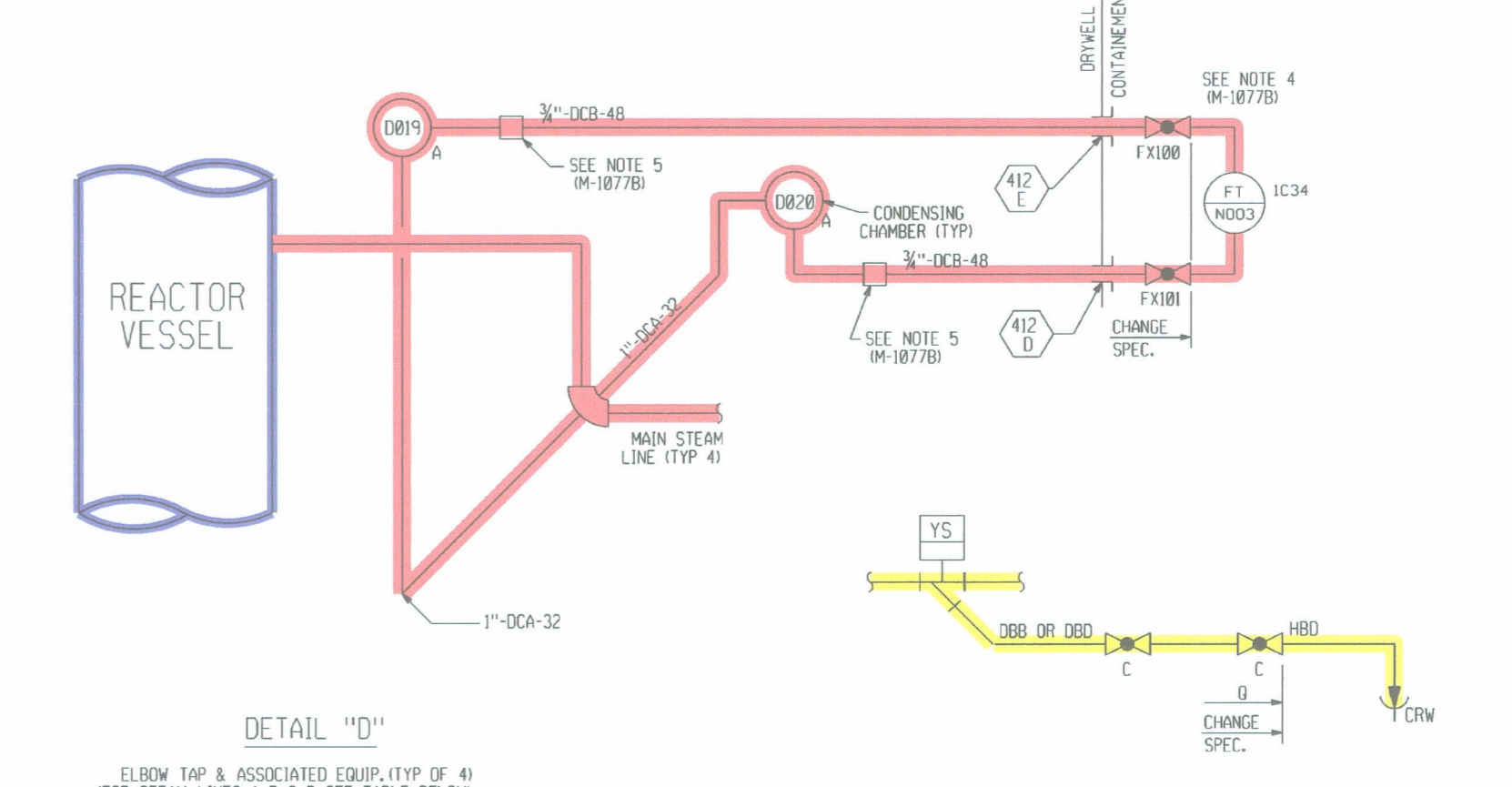
TABLE I SAFETY/RELIEF VALVES & ASSOCIATED EQUIPMENT SUFFIX LETTER ASSIGNMENTS

SAFETY/RELIEF VALVES	PS N150	F841A-F841X																														
		A	B	C	D	E	F	G	H	I	J	K	L	M	N	O	P	Q	R	S	T	U	V	W								
PRESSURE SWITCH FX VALVE AND PENETRATION	PS N150	133	121	142	136	131	123	135	124	132	141	126	139	137	134	130	120	140	138	122	125											
	PENETRATION	445E	357D	438E	351B	445A	375F	448F	351A	445F	438D	351E	438C	351C	448D	445E	357C	348E	351D	357E	351F											
PRESSURE INDICATING SWITCH	N668																															
	N669																															
	N670																															
	N616																															
	N617																															
PRESSURE SWITCH	N618																															
	N619																															
	N620																															
	N621																															
TEMPERATURE ELEMENT COMPUTER INPUT VALVE ACTUATED	N804																															
SOLENOID VALVES	SV F505																															
HANDSWITCH	HSS M150 (DIV. 1 ONLY) * APPLICABLE																															
	HS M605																															
VACUUM BREAKER	F100																															
VACUUM BREAKER	F078 & F037																															
REMOTE SHUTDOWN SWITCH	HS M400 & M401																															

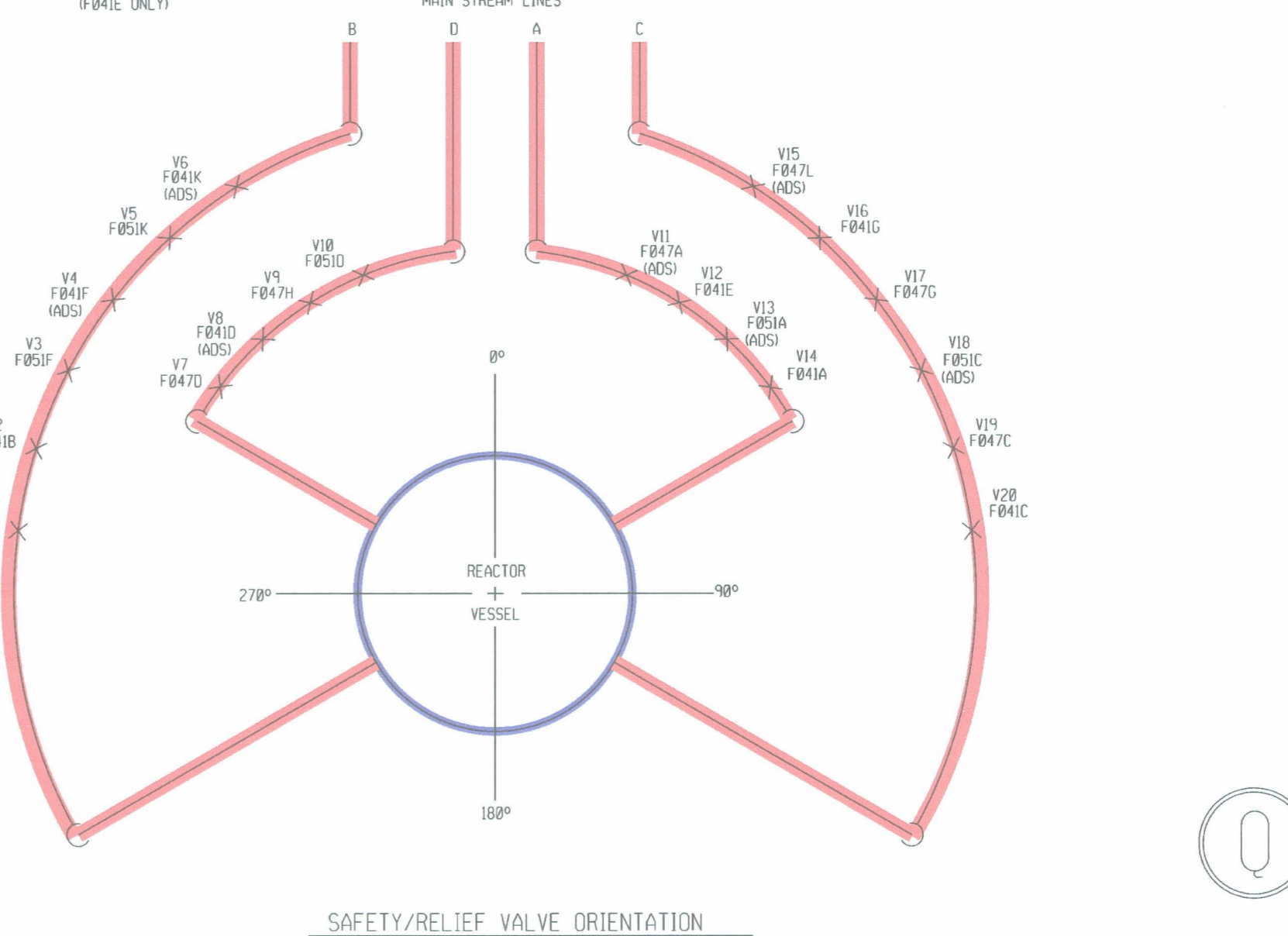
TABLE II RELIEF DISCHARGE LINES SIZE TABULATION

VALVE NUMBER	10"-G80-117/10"-G8C-10	12"-G80-117/12"-G8C-10	14"-G80-117/14"-G8C-10	16"-G80-117/16"-G8C-10
V1 *	✓	✓	N/A	N/A
V2	✓	✓	N/A	N/A
V3	✓	N/A	✓	N/A
V4 *	✓	✓	✓	✓
V5	✓	✓	✓	✓
V6 *	✓	✓	✓	✓
V7	✓	N/A	✓	✓
V8 *	✓	✓	N/A	✓
V9	✓	✓	N/A	✓
V10	✓	N/A	N/A	✓
V11 *	✓	N/A	N/A	✓
V12	✓	N/A	✓	✓
V13 *	✓	N/A	✓	✓
V14	✓	✓	✓	✓
V15 *	✓	✓	N/A	✓
V16	✓	✓	N/A	✓
V17	✓	✓	✓	✓
V18 *	✓	✓	✓	✓
V19	✓	✓	N/A	✓
V20	✓	✓	N/A	✓

* INDICATES ADS VALVES, THE PIPE CLASSIFICATION AND LINE NUMBER FOR ADS VALVES WOULD BE GBC-10.
 ✓ INDICATES THAT IT FORMS PART OF THE SAFETY RELIEF VALVE DISCHARGE LINE.



STEAM LINE	CONDENSING CHAMBERS	TRANSMITTER	PENETRATION	ROOT VALVES
A	D019A, D020A	IC34 FT N803A	412E, 412D	FX100, FX101
B	D019B, D020B	IC34 FT N803B	450C, 450B	FX102, FX103
C	D019C, D020C	IC34 FT N803C	425A, 425F	FX104, FX105
D	D019D, D020D	IC34 FT N803D	413B, 413A	FX098, FX099



- NOTES:
- FOR ADDITIONAL NOTES SEE DRAWING M-1077A.
 - ALL PIPING 2" AND SMALLER IS CLASSIFIED AS 1"-"RADIATION LEVEL, UNLESS NOTED OTHERWISE.
 - LOCATE EACH BONNET VENT LINE VACUUM BREAKER AS CLOSE AS POSSIBLE TO THE VENT LINE AND THE SAFETY RELIEF VALVE.
 - VALVES F084A AND C ARE 3 INCHES IN SIZE AND THE REMAINING VACUUM BREAKERS ARE 2 1/2 INCHES IN SIZE.
 - CONNECTIONS SHALL BE INSTALLED IN THE HORIZONTAL PLANE.
 - PIPING FROM INSIDE DRYWELL PENETRATION TO SPARGER SHALL BE 10"-EGC.

- COMPONENTS SUBJECT TO AMR
- REACTOR PRESSURE VESSEL AMM01
 - REACTOR COOLANT SYSTEM PRESSURE BOUNDARY AMM03
 - PRESSURE RELIEF SYSTEM AMM08
 - NON-SAFETY RELATED SYSTEMS & COMPONENTS AFFECTING SAFETY RELATED SYSTEMS AMM20
 - COMPRESSED AIR SYSTEMS AMM27

NO.	DESCRIPTION	BY	CHK	APP	DATE
003	AS-BUILT PER EC 26677	WE	N/A	N/A	11-21-11
002	AS-BUILT PER SWO TO CORRECT USAR FIGURE NUMBER	WE	N/A	N/A	11-24-11
001	AS-BUILT PER ORN 6181	WE	N/A	N/A	11-18-11

GRAND GULF NUCLEAR STATION
 UNIT 1
 NUCLEAR PLANT ENGINEERING
UPDATED FINAL SAFETY ANALYSIS REPORT
 FIGURE NUMBER - 05.2-008-02
 P&I DIAGRAM
 NUCLEAR BOILER SYSTEM

NO.	DATE	DESCRIPTION	BY	ENG	CHK	APP
REVISIONS						
LRA-M-1077E						