

M

M'

N

S

3473-13 | 3473-24

3473-24 | 3473-25

3473-25 | 3473-36

3473-36 | 3373-1

3373-1 | 3373-12

Crosses C-C' Highway 93

Crosses D-D'

Crosses E-E'

Crosses F-F'

North Platte River

5000'

5000'

4900'

4900'

4800'

4800'

4700'

4700'

4600'

4600'

4500'

4500'

4400'

4400'

3473-24-56  
5039'

3473-24-4  
5003'

3473-NAC-25-9  
4977'

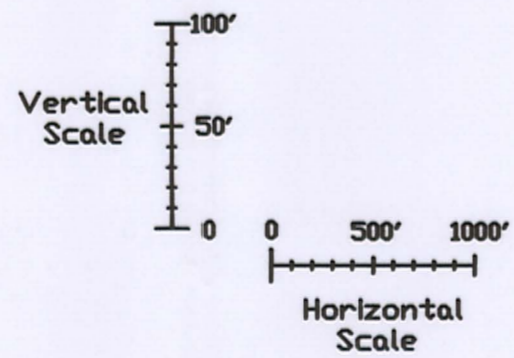
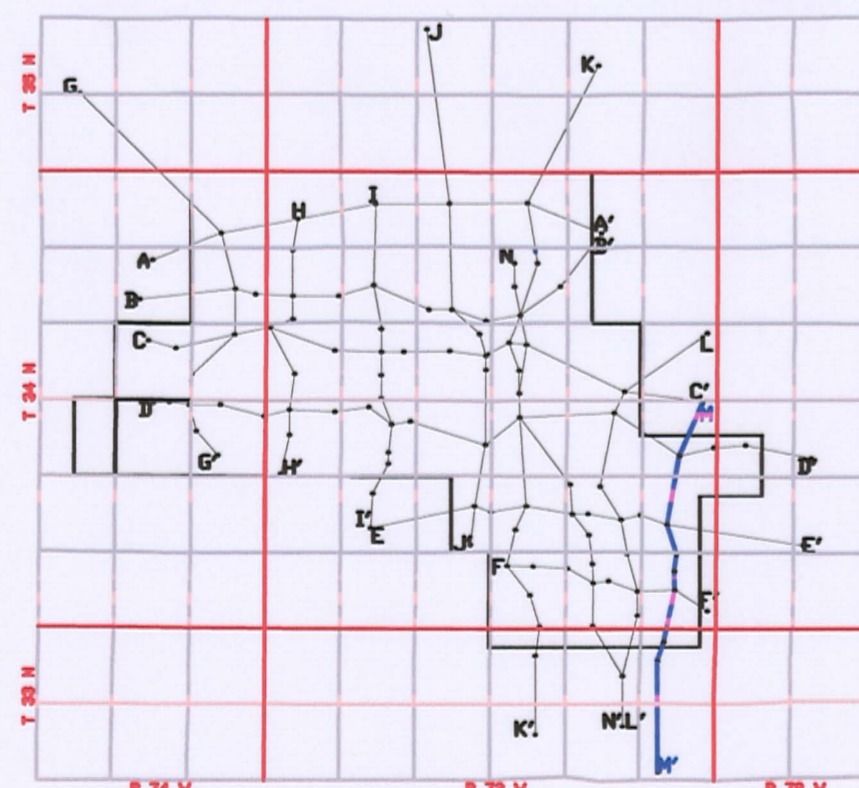
3473-25-4  
4960'

3473-36-7X  
4977'

3473-36-M-24  
4988'

3373-NAC-1-12  
5012'

3373-1-8  
4944'



### LEGEND

- 100 SAND
- 90 SAND
- 80 SAND
- 70 SAND
- 60 SAND
- 50 SAND

ROLL FRONT )  
NTS NOT TO SCALE

LOOKING EAST



907 North Poplar St., Suite 260, Casper, WY 82601 307-234-8235

### LUDEMAN PROJECT CROSS SECTION M-M'

T.34N., R.73W., Sec. 24,25,36  
T.33N., R.73W., Sec. 1,12

CONVERSE COUNTY, WYOMING

Date: 02/09/2009 By: TC Checked:

Rev. No.	Description	Date	By
1		07/28/2009	TC

FIGURE:  
3.3-15

D13