

I

I'

N

S

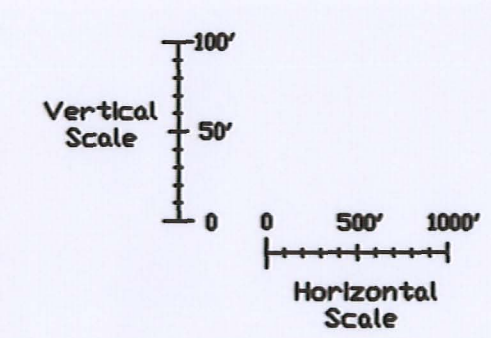
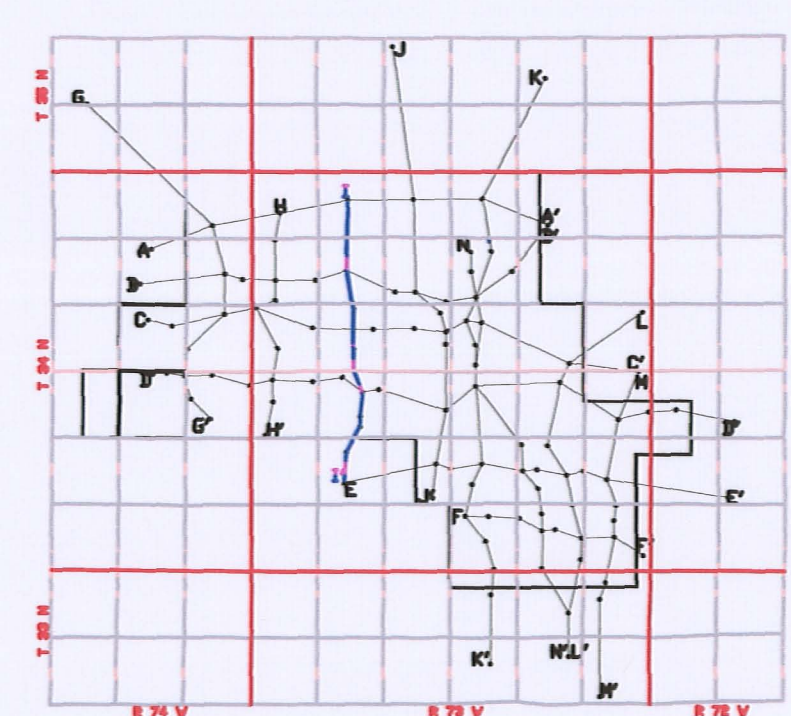
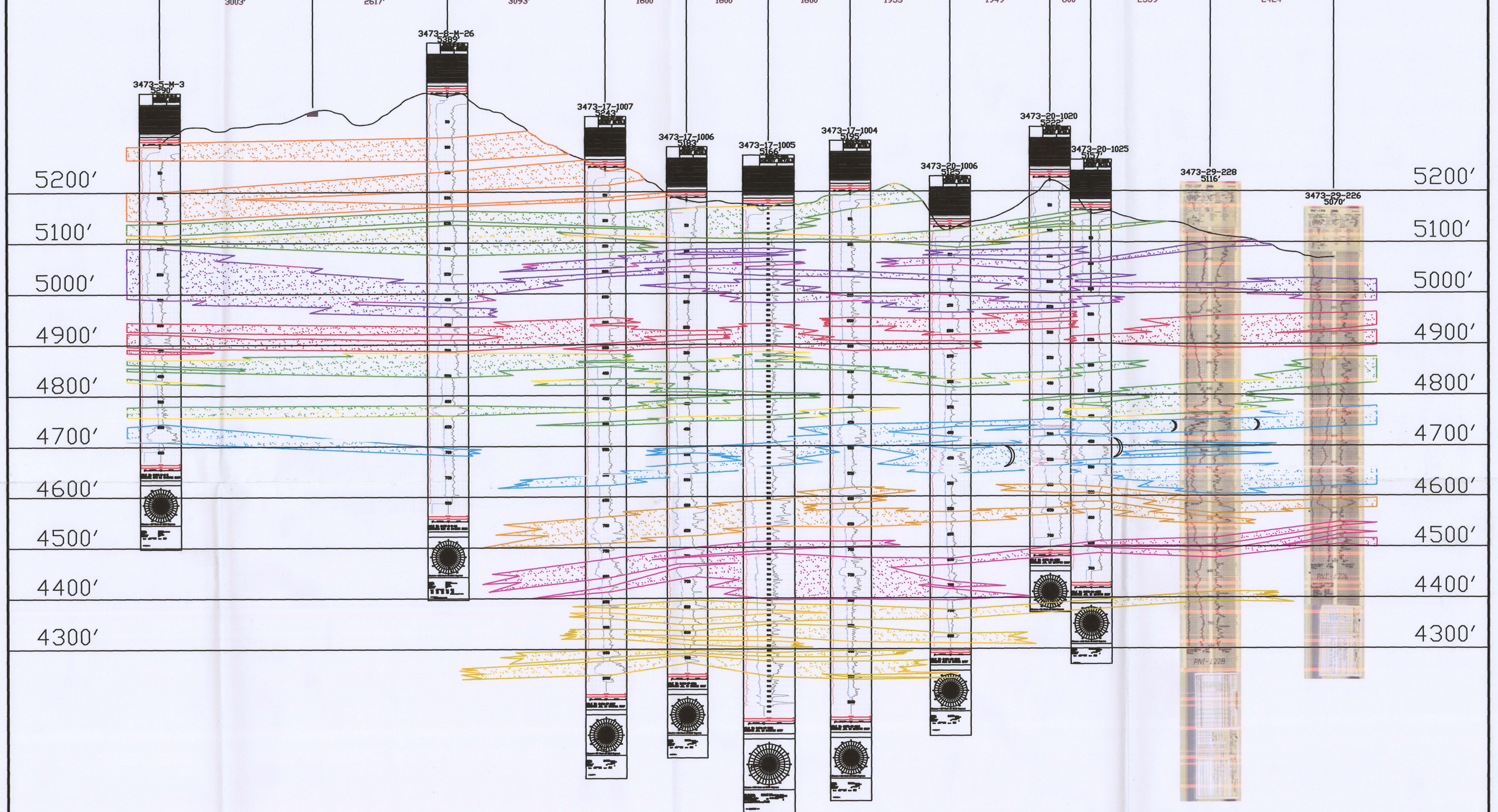
3473-5 3473-8

3473-8 3473-17

3473-17 3473-20

3473-20 3473-29

Crosses A-A' Highway 95 Crosses B-B' Crosses C-C' Crosses D-D' Crosses E-E'



LEGEND

- 120 SAND
- 110 SAND
- 100 SAND
- 90 SAND
- 80 SAND
- 70 SAND
- 60 SAND
- 50 SAND

ROLL FRONT)
 NTS NOT TO SCALE
 LOOKING EAST



907 North Poplar St., Suite 260, Casper, WY 82601 307-234-8235

LUDEMAN PROJECT
 CROSS SECTION I-I'
 T.34N., R.73W., Sec. 5,8,17,20,29
 CONVERSE COUNTY, WYOMING

Date:	02/09/2009	By:	TC	Checked:	
Rev. No.	1	Description	Date	By	FIGURE:
			07/28/2009	TC	3.3-11

D09