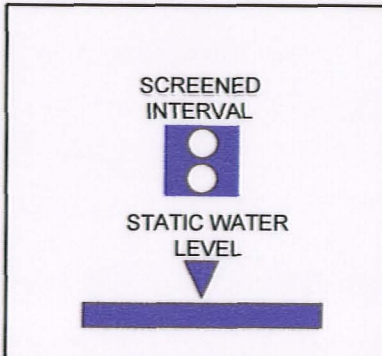
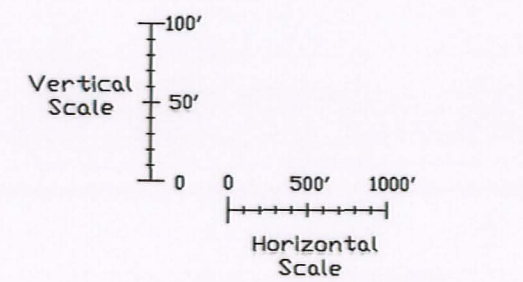
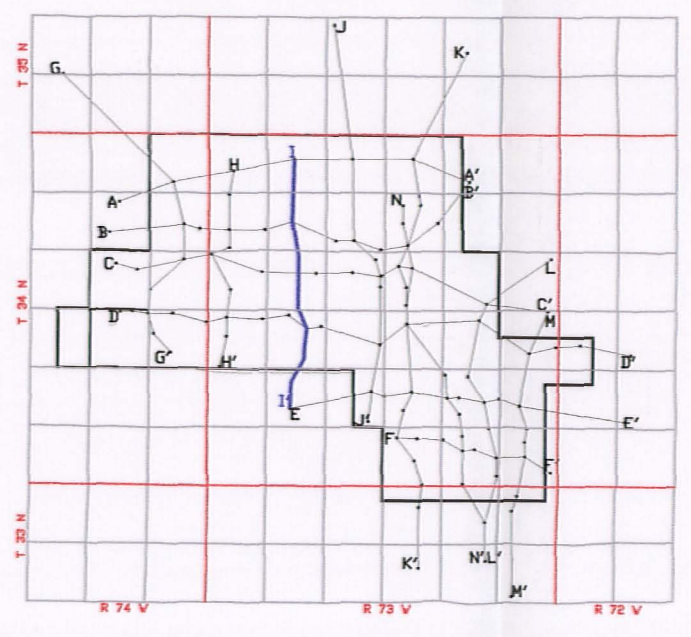
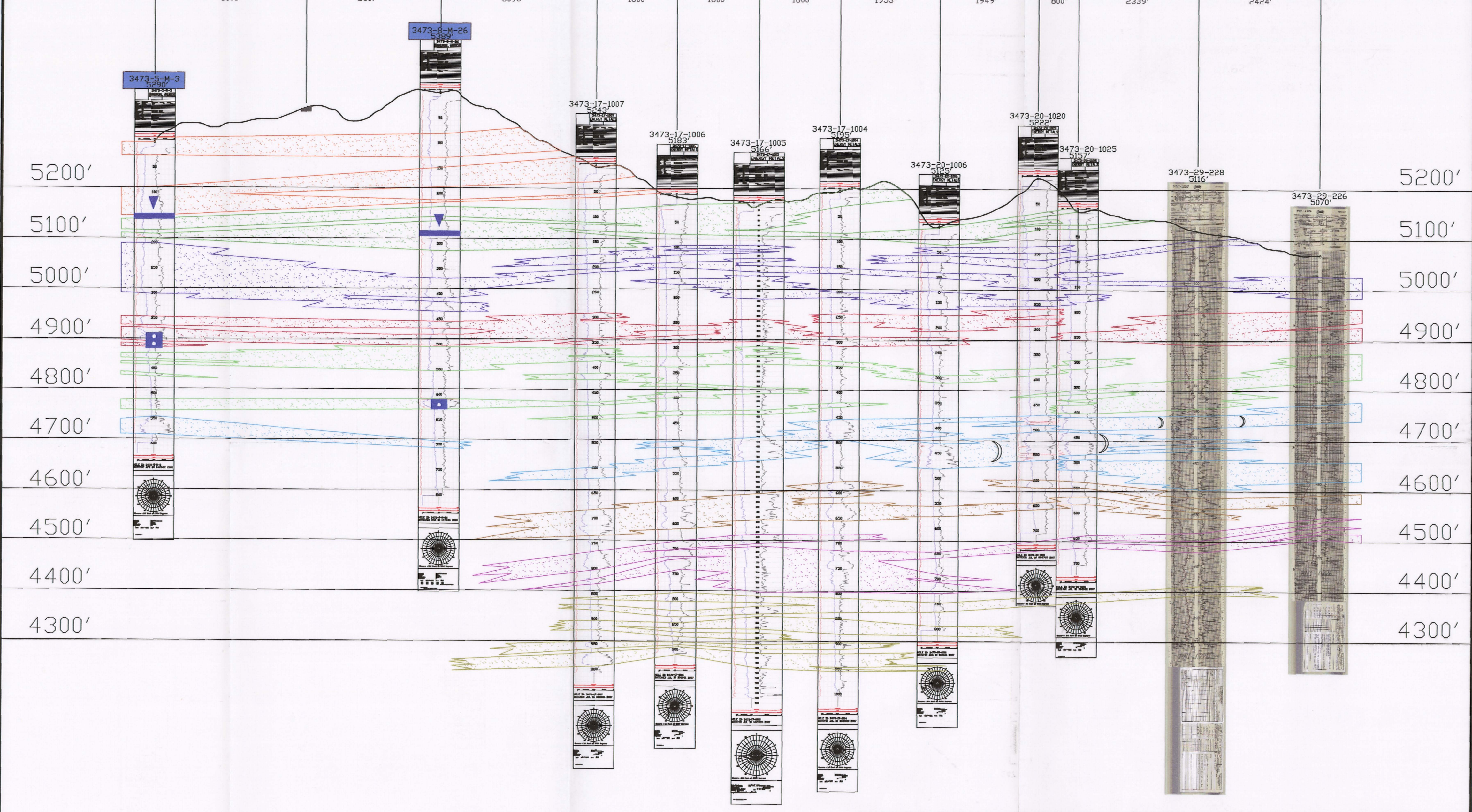


I N I' S

3473-5 3473-8 3473-8 3473-17 3473-17 3473-20 3473-20 3473-29 3473-29

Crosses A-A' Highway 95 Crosses B-B' Crosses C-C' Crosses D-D' Crosses E-E'



LEGEND

120 SAND	[Red pattern]
110 SAND	[Green pattern]
100 SAND	[Blue pattern]
90 SAND	[Purple pattern]
80 SAND	[Light green pattern]
70 SAND	[Light blue pattern]
60 SAND	[Light purple pattern]
50 SAND	[Light green pattern]

ROLL FRONT)
NTS)
NOT TO SCALE)
LOOKING EAST)

uraniumone™
investing in our energy
907 North Poplar St., Suite 260, Casper, WY 82601 307-234-8235

LUDEMAN PROJECT
CROSS SECTION I-I'
T.34N., R.73W., Sec. 5,8,17,20,29
CONVERSE COUNTY, WYOMING

Date:	02/09/2009	By:	TC	Checked:	
Rev. No.	1	Description		Date	07/28/2009
				By	TC

FIGURE:
2-15

D04