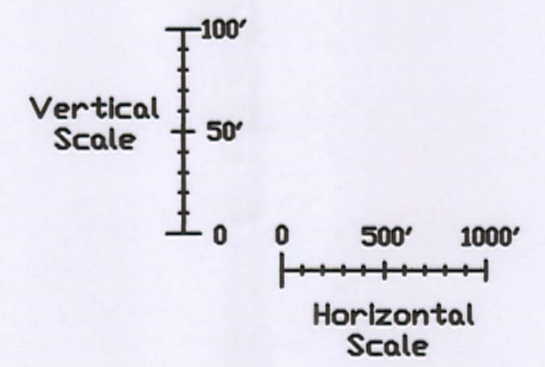
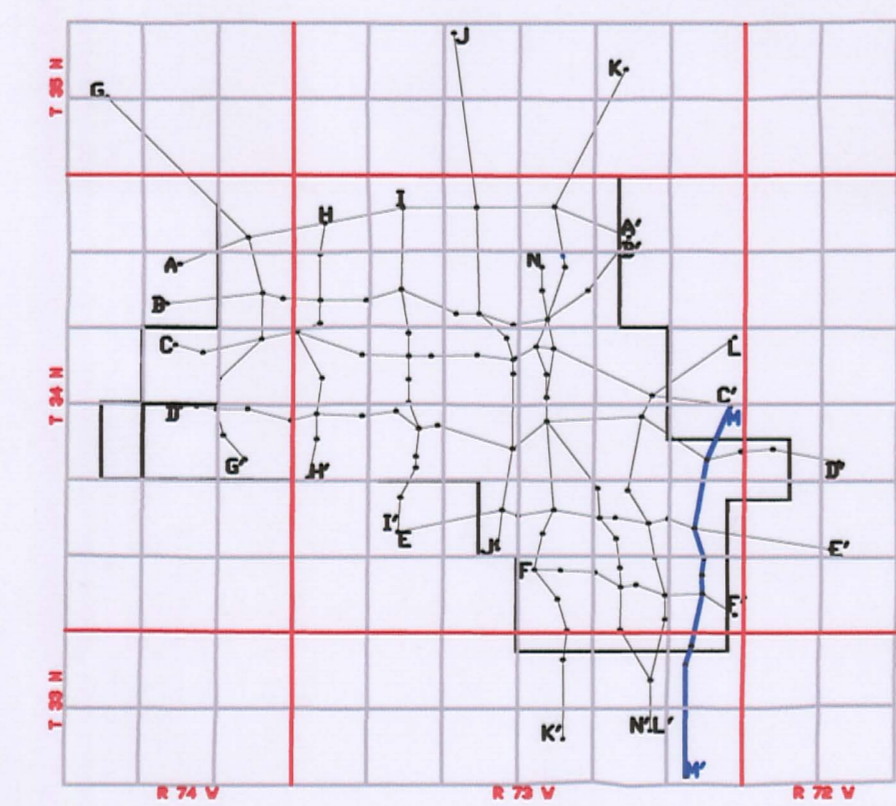
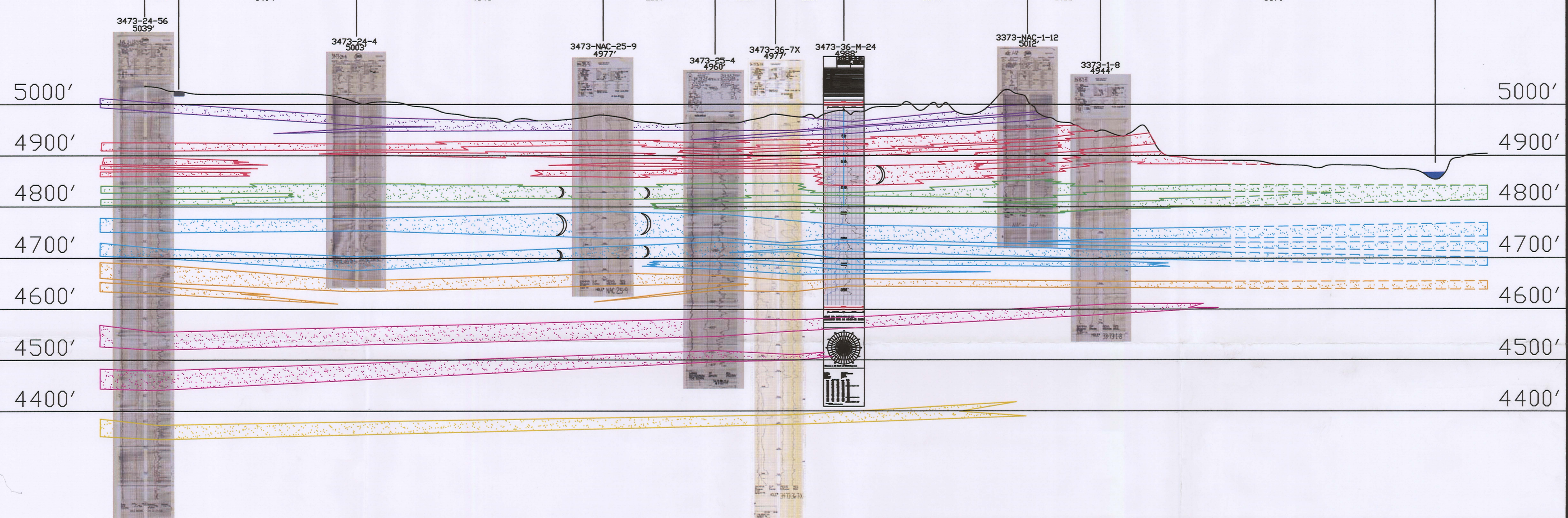


M

M'

N

S



**LEGEND**

100 SAND	
90 SAND	
80 SAND	
70 SAND	
60 SAND	
50 SAND	
ROLL FRONT	
NTS	NOT TO SCALE

**LOOKING EAST**

**uraniumone™**  
investing in our energy

907 North Poplar St., Suite 260, Casper, WY 82601 307-234-8235

**LUDEMAN PROJECT**  
**CROSS SECTION M-M'**  
T.34N., R.73W., Sec. 24,25,36  
T.33N., R.73W., Sec. 1,12  
CONVERSE COUNTY, WYOMING

Date: 02/09/2009		By: TC		Checked:	
Rev. No.	Description	Date	By	<b>FIGURE:</b> 2.6-15	
1		07/28/2009	TC		

0213 013