

ADDENDUM 3.5-I
WETLAND PHOTOGRAPHS

Little Sand Creek Drainage Area



Photo 1 – WL-1a, Little Sand Creek. Looking northeast. Emergent wetland with creeping spike rush.

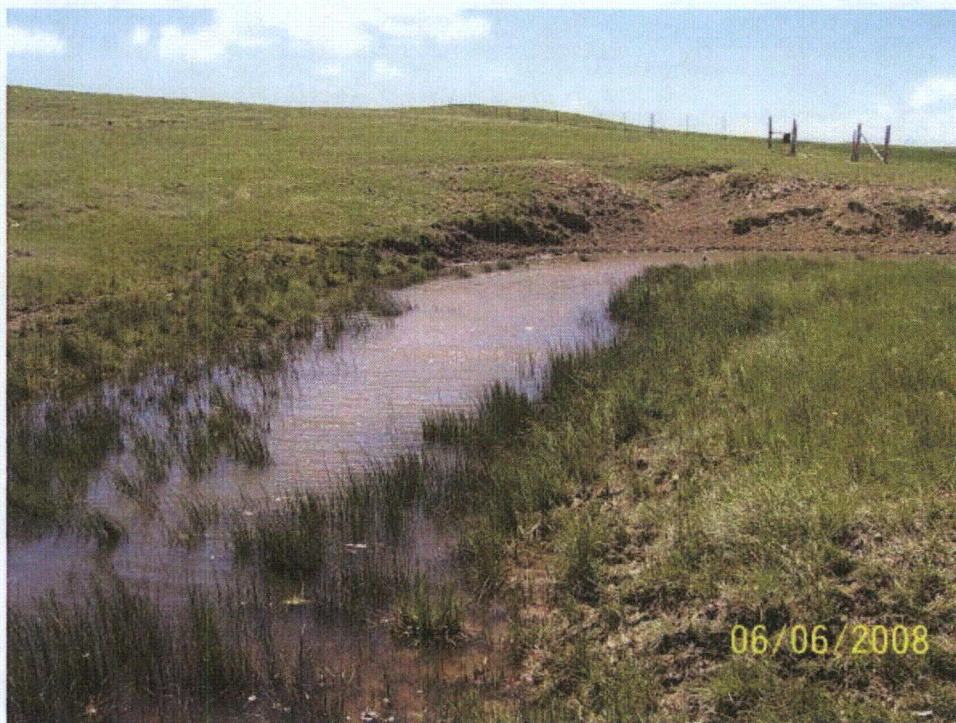


Photo 2 – WL-1m, Little Sand Creek. Looking southwest. Emergent wetland.



Photo 3 – WL-10, Little Sand Creek. Emergent wetland, Looking southwest towards Section 15.



Photo 4 – WL-3a, Little Sand Creek. Emergent wetland . Looking northeast.



Photo 5 – WL-3b. Little Sand Creek. Emergent wetland . Looking west.



Photo 6 – WL-3c. Little Sand Creek. Emergent wetland . Looking southeast.



Photo 7 – WB-1. Diked tributary to Little Sand Creek. Looking southeast.



Photo 8 – WB-2. Isolated waterbody. Looking northeast, WB-1 in background.



Photo 9 - WB-3. Diked tributary to Little Sand Creek. Looking northwest.



**Photo 10 – WB-5. Discontinuous depression in tributary to Little Sand Creek.
Looking south.**



Photo 11 – WB-7. Diked waterbody within Little Sand Creek. Looking south.



**Photo 12 - WB-10. Discontinuous depression in tributary to Little Sand Creek.
Looking east.**



**Photo 13 – WB-14. Discontinuous depression in tributary to Little Sand Creek.
Looking north.**



Photo 14 – WB-16. Diked drainage in tributary to Little Sand Creek. Looking southeast.

Running Dutchman Ditch Drainage Area



Photo 15 – WL-4. Emergent wetland in depression in drainage on back side of dike. Tributary to Running Dutchman Ditch. Looking northwest.



Photo 16 – WL-5. Isolated emergent wetland in depression within Running Dutchman Ditch drainage area. Looking southeast.



Photo 17 – WL-6. Emergent wetland in diked drainage within Running Dutchman Ditch tributary. Looking east.



Photo 18 – WB-17. Isolated depression at windmill in Running Dutchman Ditch drainage area. Looking northwest.



Photo 19 – WB-18. Diked tributary to Running Dutchman Ditch. Looking southeast.



Photo 20 – WB-19. Diked tributary to Running Dutchman Ditch. Looking east.



**Photo 21 – WB-20. Tributary to Running Dutchman Ditch at County Road.
Looking southeast.**



Photo 22 – WB-21. Diked tributary to Running Dutchman Ditch. Looking southwest.



Photo 23 – WB-43. Diked tributary to Running Dutchman Ditch. Looking west.



Photo 24 – WB-44. Depression in drainage in tributary to Running Dutchman Ditch. Looking north.



Photo 25 – WB-45. Depression in drainage in tributary to Running Dutchman Ditch. Looking north.



Photo 26 – WB-48. Depression in drainage in tributary to Running Dutchman Ditch. Looking northeast.



Photo 27 – WB-50. Depression in drainage in tributary to Running Dutchman Ditch. Looking east.



Photo 28 – WB-52. Depression in drainage in tributary to Running Dutchman Ditch. Looking northwest.



Photo 29 – WB-54. Depression in drainage in tributary to Running Dutchman Ditch. Looking northwest.



Photo 30 – WB-56. Depression in drainage in tributary to Running Dutchman Ditch. Looking north.



Photo 31 – WB-58. Depression in drainage in tributary to Running Dutchman Ditch. Looking north.



Photo 32 – WB-61. Diked tributary to Running Dutchman Ditch. Looking northwest.



Photo 33 – WB-62. Diked tributary to Running Dutchman Ditch. Looking south.



Photo 34 – WB-63. Diked tributary to Running Dutchman Ditch. Looking southwest.

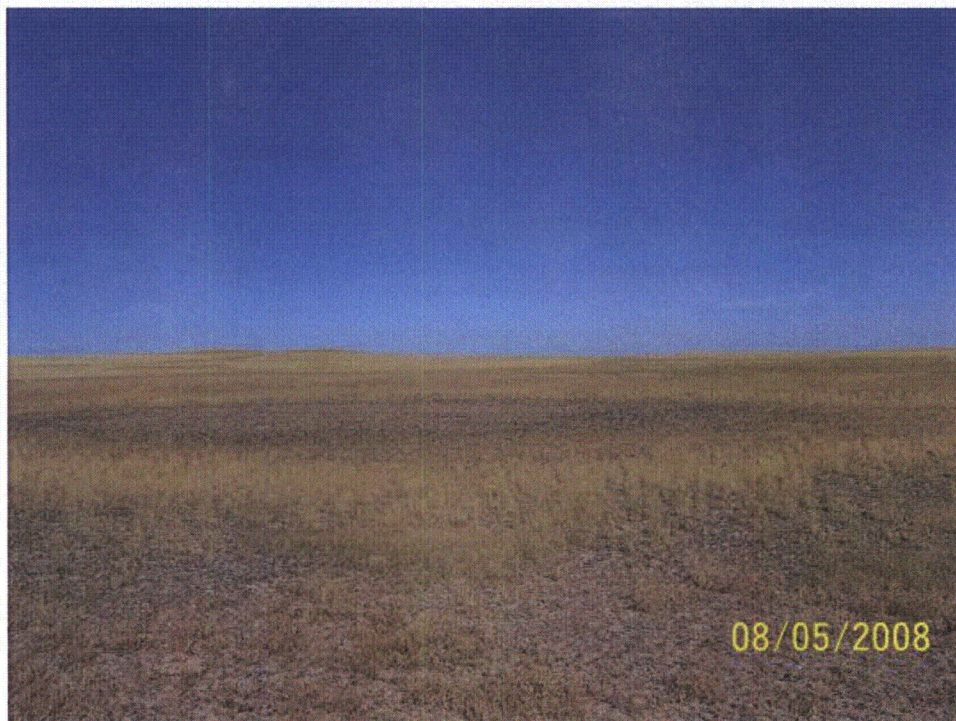


Photo 35 – WB-64. Isolated depression (water body) within Running Dutchman Ditch drainage area.



Photo 36 – WB-65. Diked tributary to Running Dutchman Ditch. Looking southeast.



Photo 37 – WB-66. Diked tributary to Running Dutchman Ditch. Looking west.

Sage Creek Drainage Area



Photo 38 – WL-7. Isolated wetland in depression within Sage Creek Tributary 1 drainage area. PEMC with PUBF area. Looking south.



**Photo 39 - WL-8. Isolated emergent wetland within depression in Sage Creek
Tributary 1 drainage area. Looking northwest.**



Photo 40 – WL-9a. Emergent wetland in depression within Sage Creek Tributary 1 drainage. Looking east.



Photo 41 – WL-9b. Emergent wetland in depression within Sage Creek Tributary 1 drainage. Looking west.



Photo 42 – WL-9d. Emergent wetland in depression within Sage Creek Tributary 1 drainage. Looking west.



Photo 43 – WL-9e. Emergent wetland in depression within Sage Creek Tributary 1 drainage. Looking west.



**Photo 44 – WL-10. Isolated emergent wetland within depression in Sage Creek
Tributary 3 drainage area. Looking southeast.**



**Photo 45 – WL-11a. Emergent wetland within depression in Sage Creek Tributary
3 drainage. Looking west.**



Photo 46 - WL-12. Emergent wetland within depression in Sage Creek Tributary 2 drainage. Looking west.



Photo 47 – WL-13. Isolated emergent wetland within depression in Sage Creek Tributary 2 drainage area. Looking north.



Photo 48 – WL-14. Emergent wetland (PEMC with PUBF area) within depression in Sage Creek. Looking southeast.



Photo 49 – WL-16. Isolated emergent wetland within depression in Sage Creek Tributary 4 drainage. Looking northeast.



Photo 50 – WL-17. Emergent wetland within depression in Sage Creek Tributary 4 drainage. Looking south.



Photo 51 – WL-18c. Emergent wetland within depression in Sage Creek Tributary 4 drainage. Looking north.



Photo 52 – WL-18l. Emergent wetland within depression in Sage Creek Tributary 4 drainage. Looking west.



Photo 53 – WL-18n. Emergent wetland within depression in Sage Creek Tributary 4 drainage. Looking north.