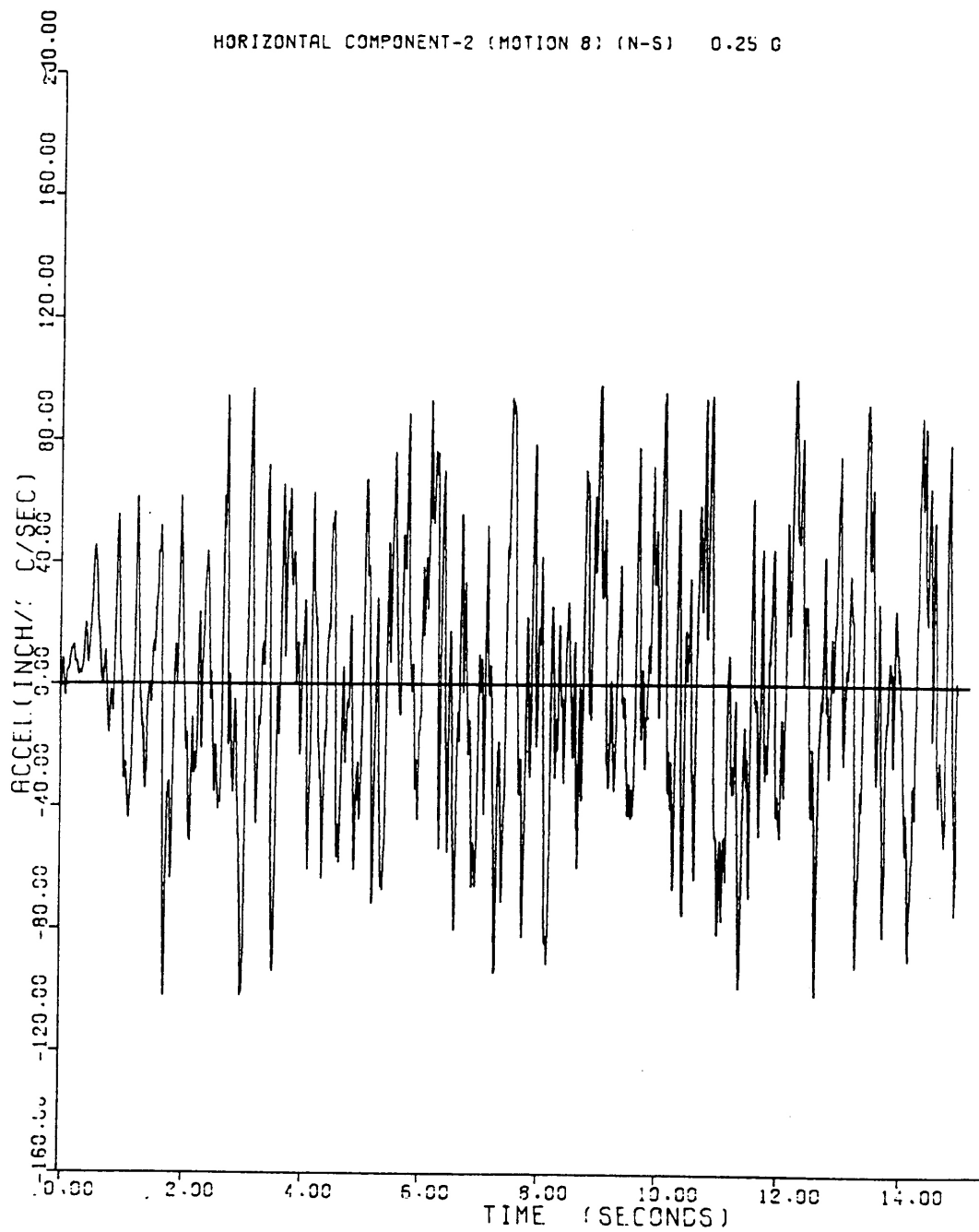
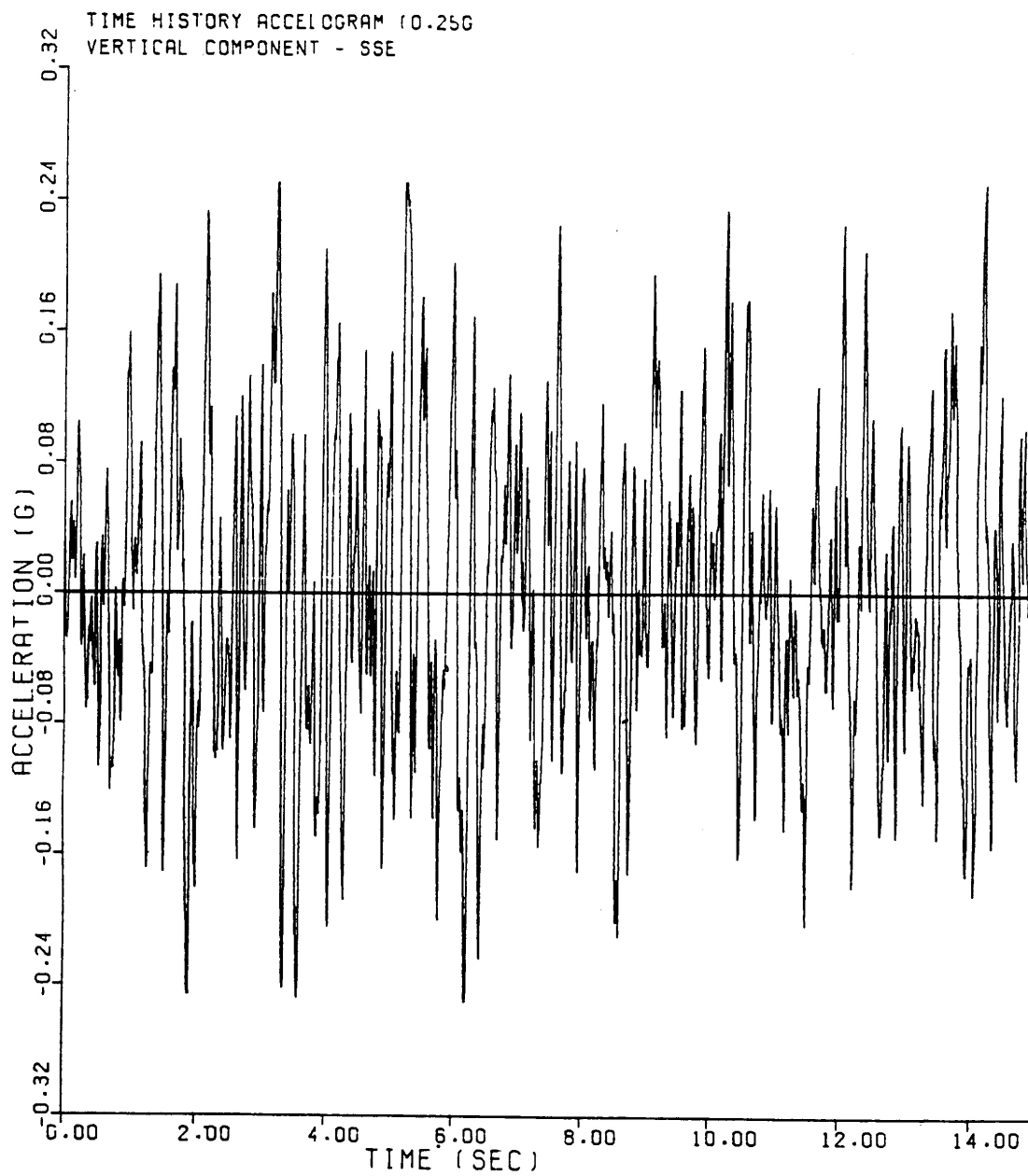


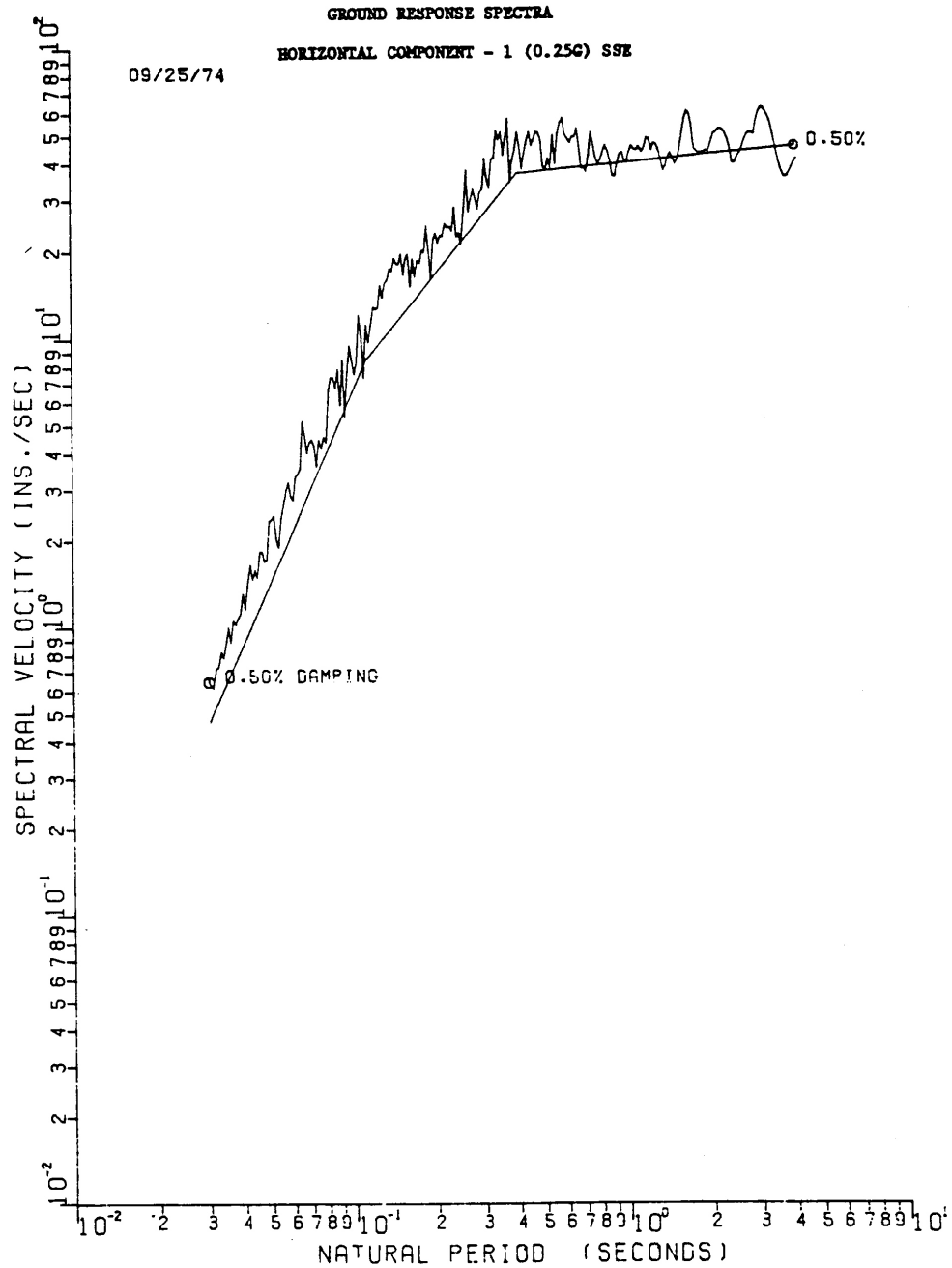
SEABROOK STATION UPDATED FINAL SAFETY ANALYSIS REPORT	Time History Accelogram (0.25g), Horizontal Component 1 - SSE	
		Figure 3.7(B)-1



SEABROOK STATION UPDATED FINAL SAFETY ANALYSIS REPORT	Time History Accelogram (0.25g), Horizontal Component 2 - SSE	
		Figure 3.7(B)-2



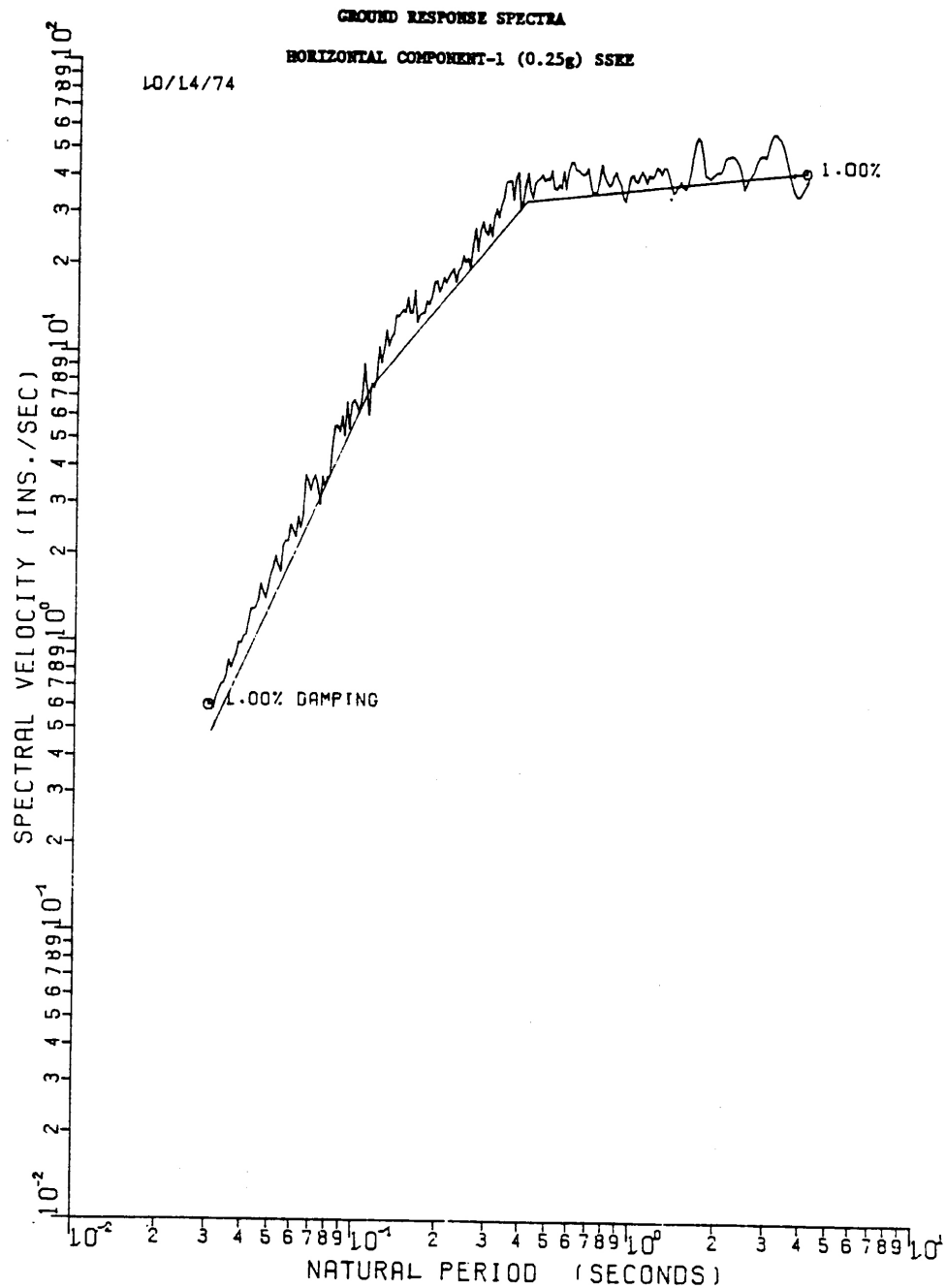
SEABROOK STATION UPDATED FINAL SAFETY ANALYSIS REPORT	Time History Accelogram (0.25g), Vertical Component - SSE	
		Figure 3.7(B)-3



SEABROOK STATION  
UPDATED FINAL SAFETY  
ANALYSIS REPORT

0.50% Critical Damping Ground Response Spectrum,  
Horizontal Component 1 - SSE

Figure 3.7(B)-4

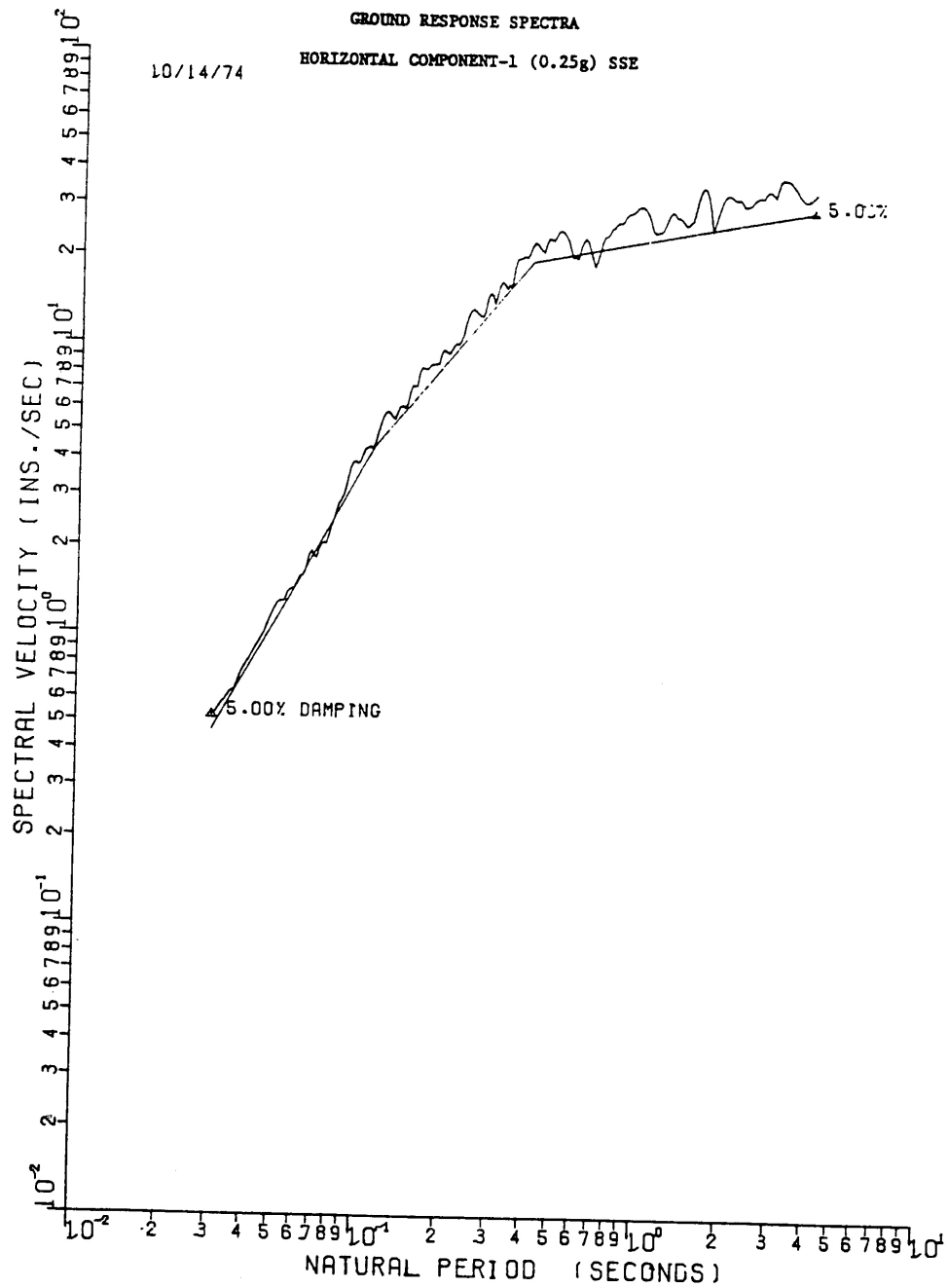


SEABROOK STATION  
 UPDATED FINAL SAFETY  
 ANALYSIS REPORT

1% Critical Damping Ground Response Spectrum,  
 Horizontal Component 1 - SSE

Figure 3.7(B)-5

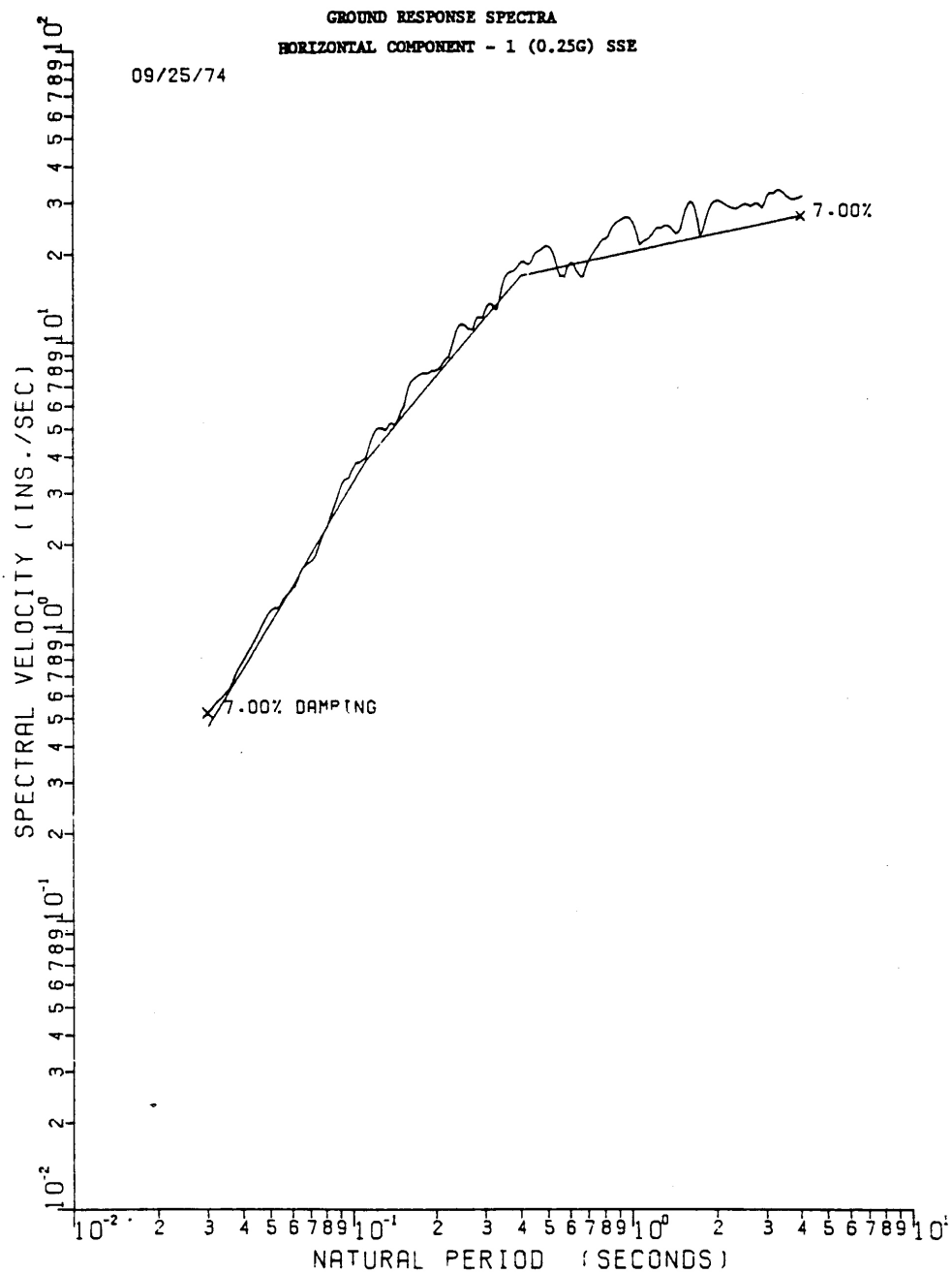




SEABROOK STATION  
UPDATED FINAL SAFETY  
ANALYSIS REPORT

5% Critical Damping Ground Response Spectrum,  
Horizontal Component 1 - SSE

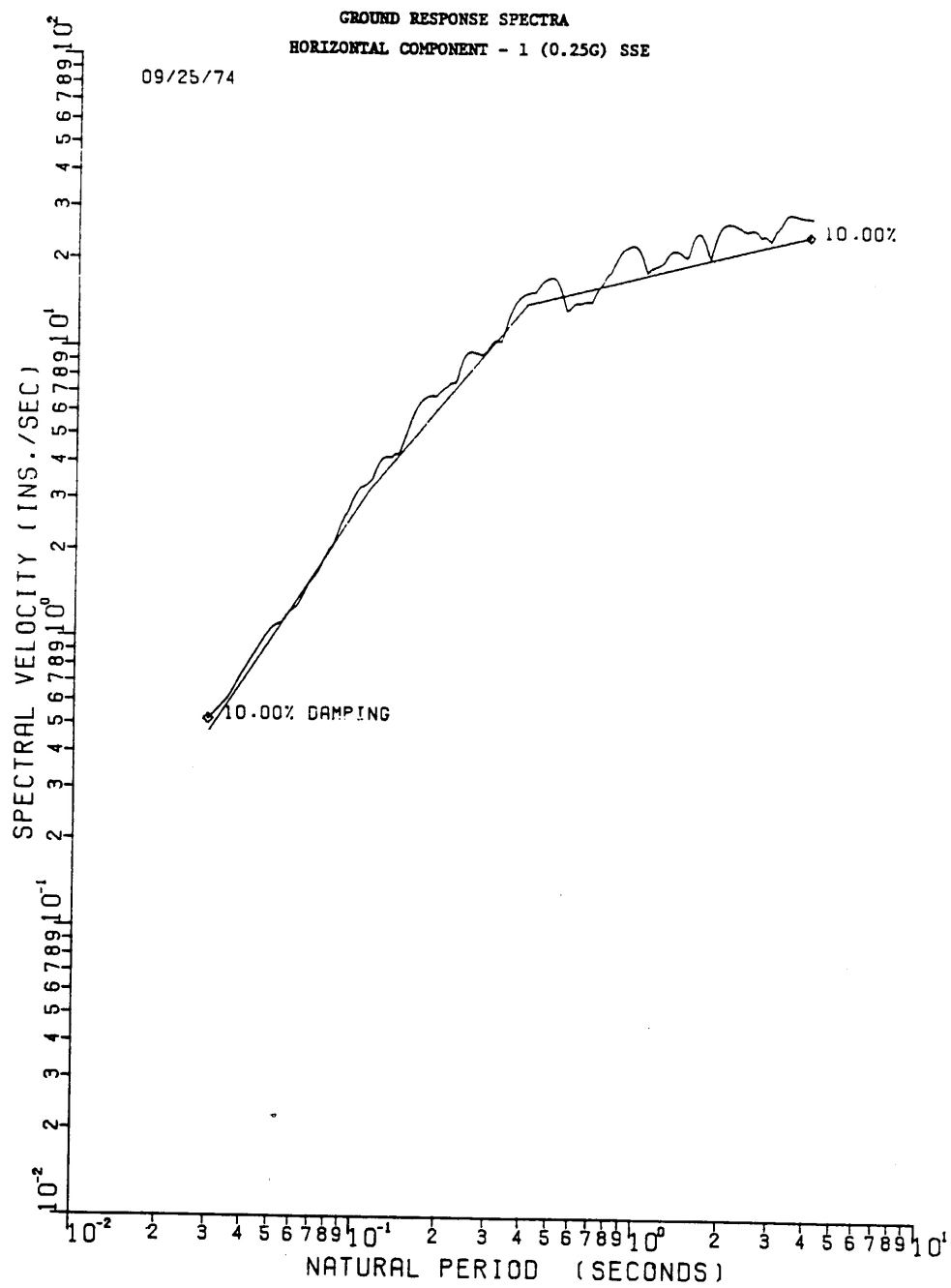
Figure 3.7(B)-7



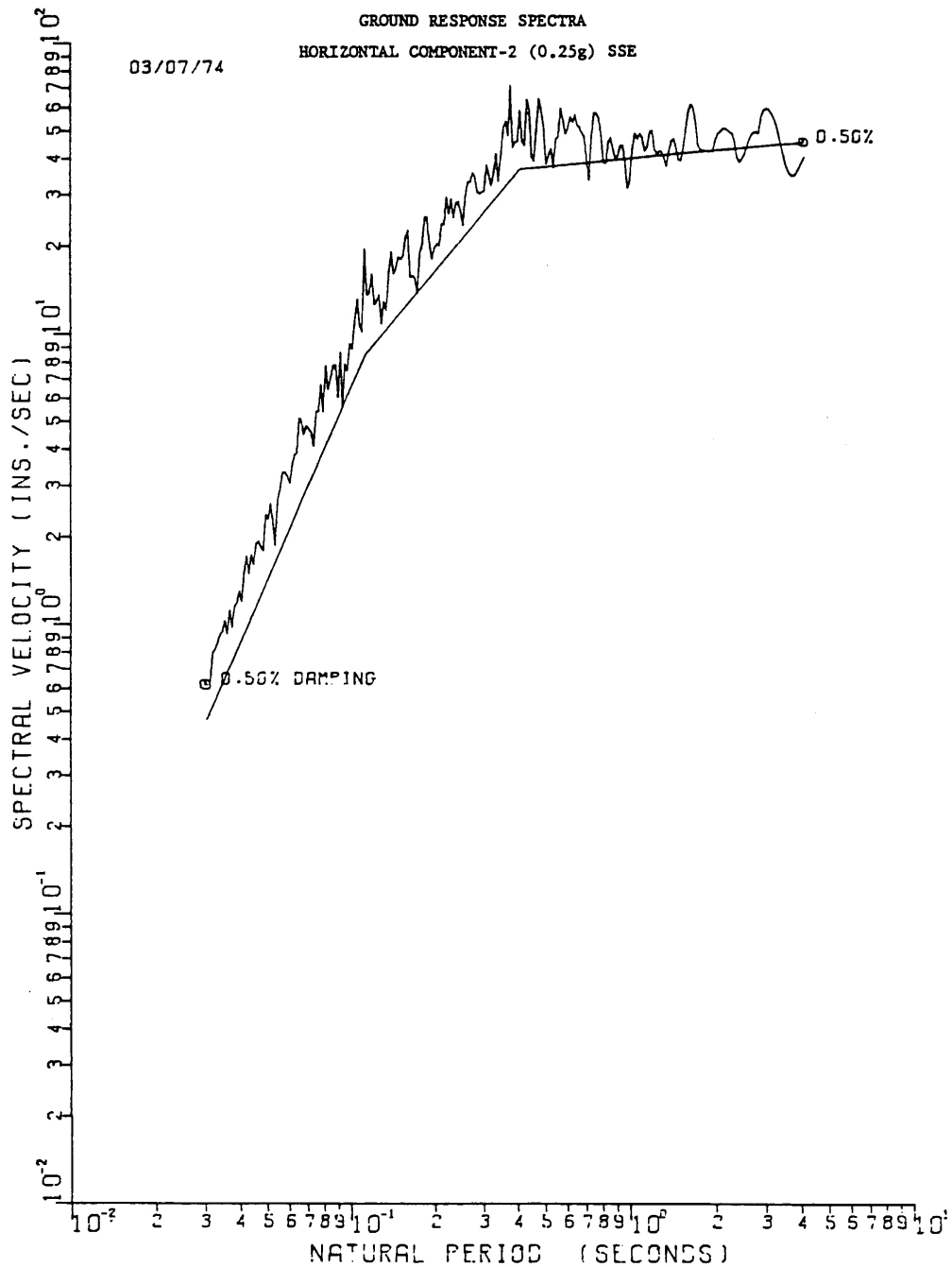
SEABROOK STATION  
 UPDATED FINAL SAFETY  
 ANALYSIS REPORT

7% Critical Damping Ground Response Spectrum,  
 Horizontal Component 1 - SSE

Figure 3.7(B)-8



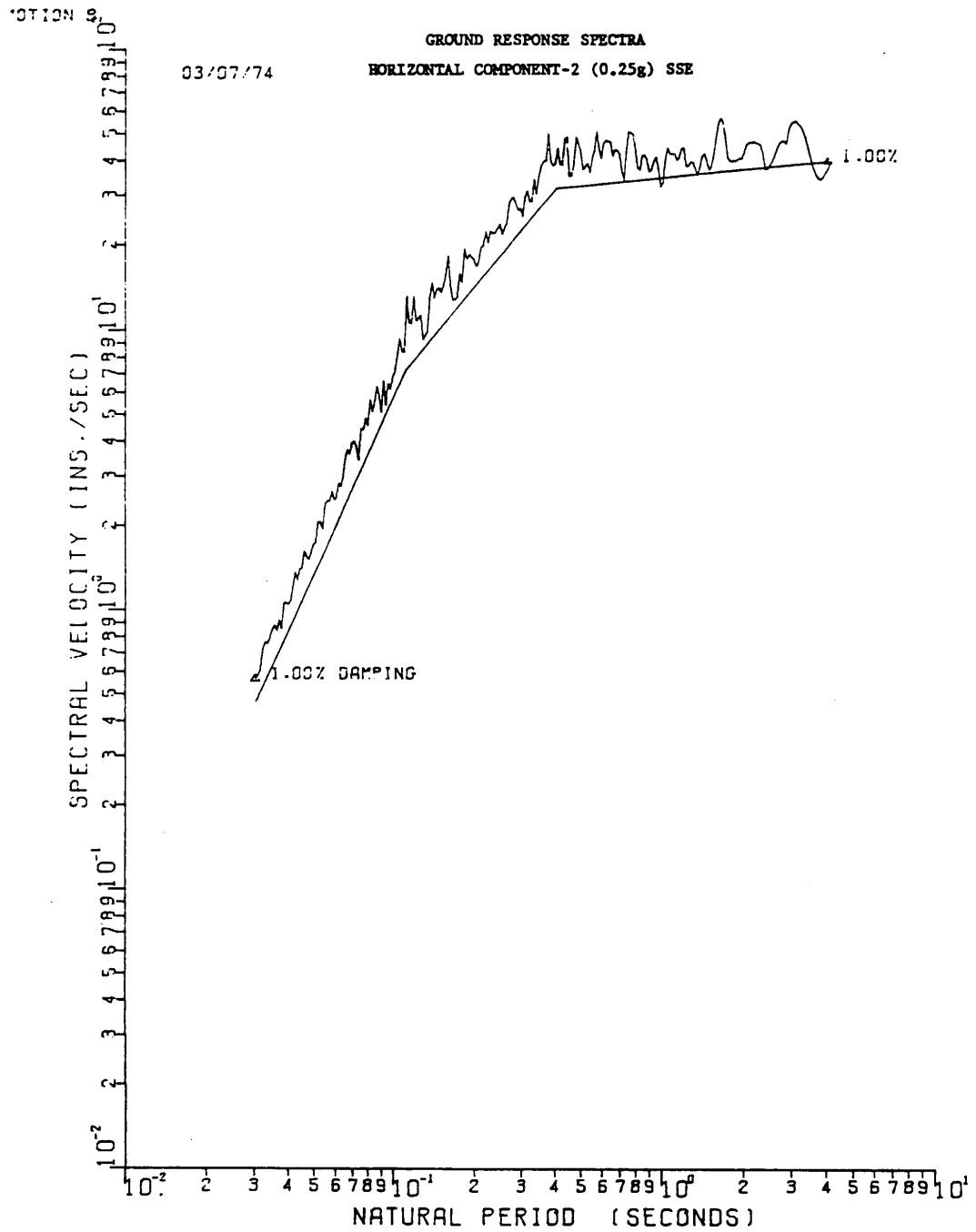
SEABROOK STATION UPDATED FINAL SAFETY ANALYSIS REPORT	10% Critical Damping Ground Response Spectrum, Horizontal Component 1 - SSE	
		Figure 3.7(B)-9



SEABROOK STATION  
UPDATED FINAL SAFETY  
ANALYSIS REPORT

0.5% Critical Damping Ground Response Spectrum,  
Horizontal Component 2 - SSE

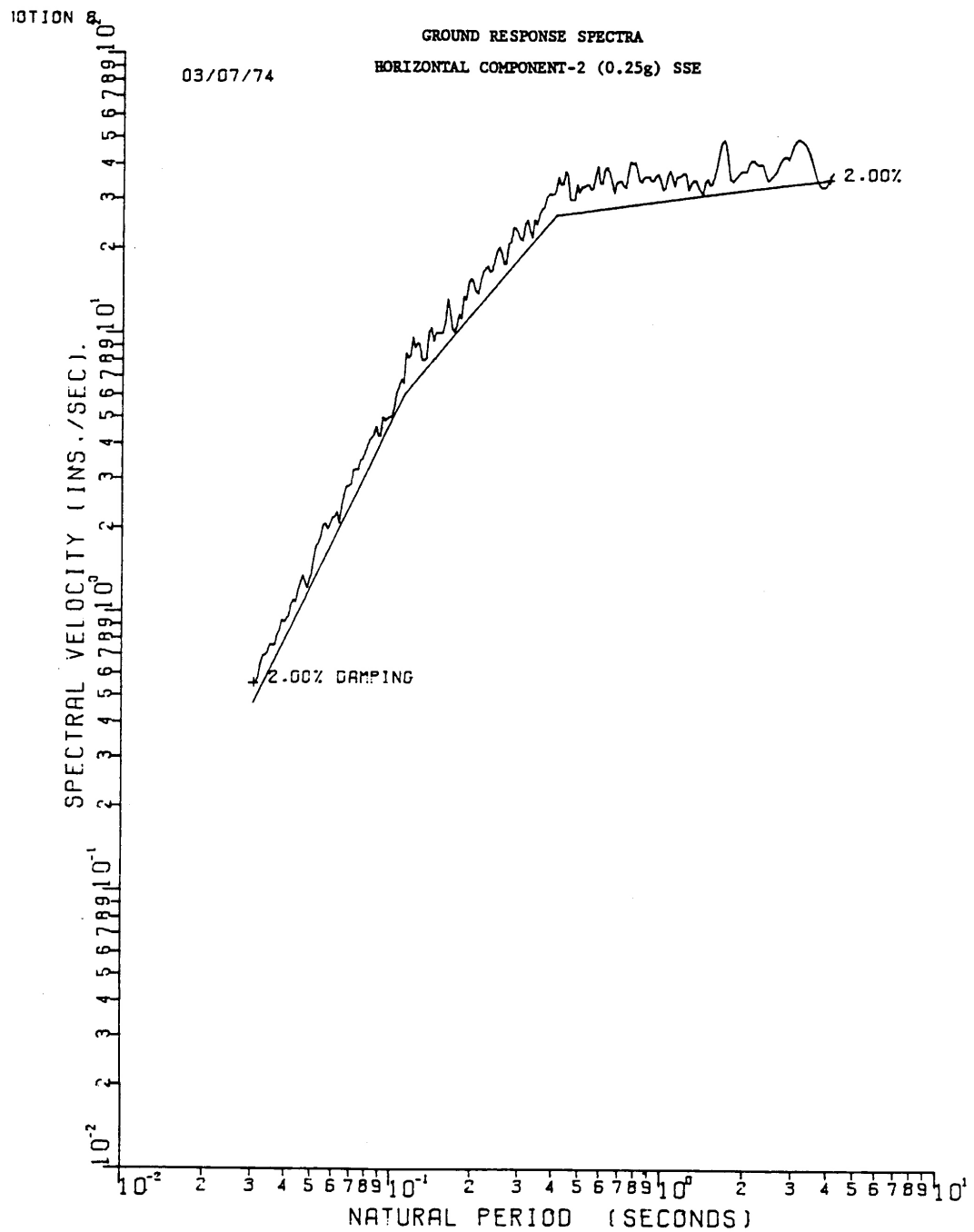
Figure 3.7(B)-10



SEABROOK STATION  
UPDATED FINAL SAFETY  
ANALYSIS REPORT

1% Critical Damping Ground Response Spectrum,  
Horizontal Component 2 - SSE

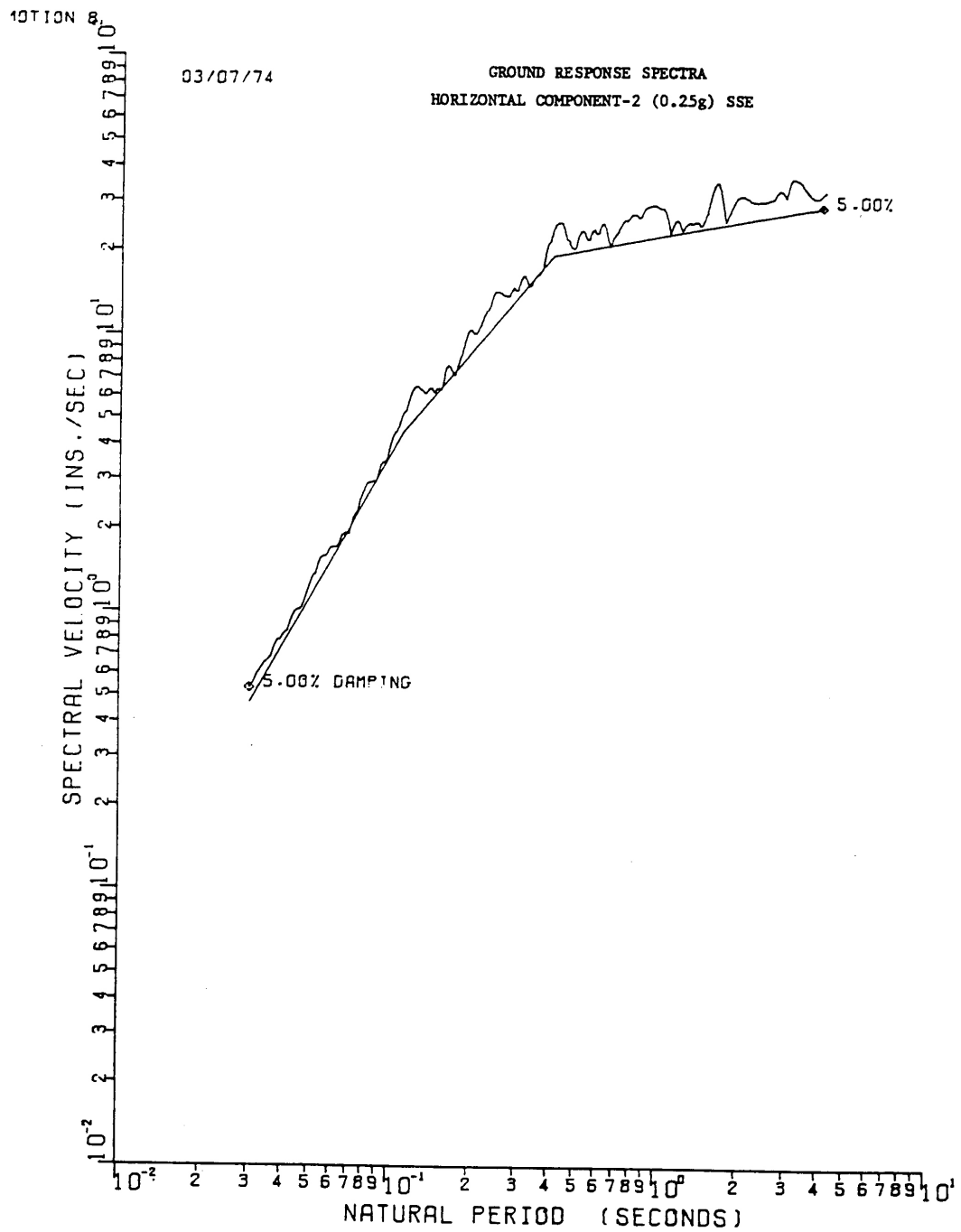
Figure 3.7(B)-11



SEABROOK STATION  
UPDATED FINAL SAFETY  
ANALYSIS REPORT

2% Critical Damping Ground Response Spectrum,  
Horizontal Component 2 - SSE

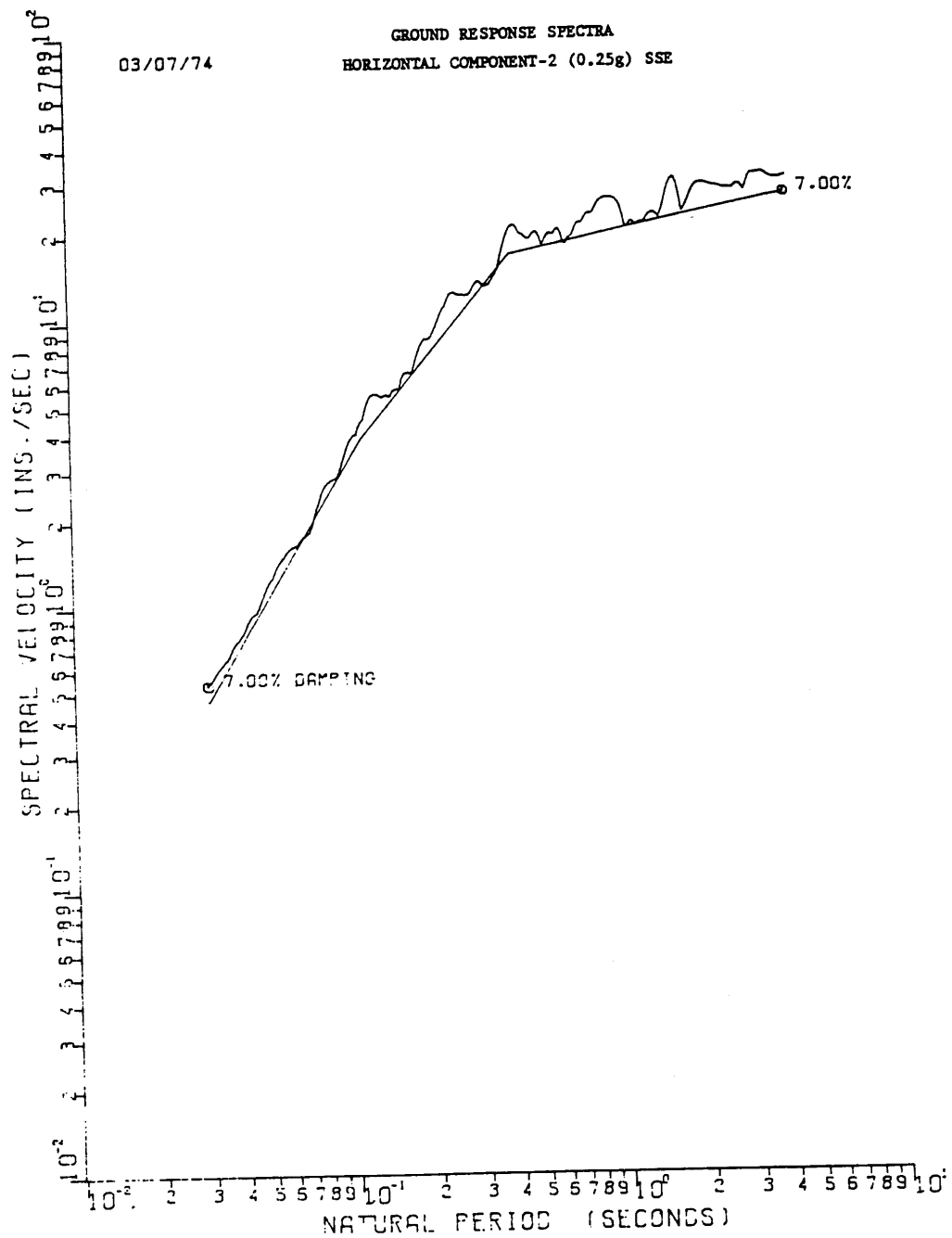
Figure 3.7(B)-12



SEABROOK STATION  
UPDATED FINAL SAFETY  
ANALYSIS REPORT

5% Critical Damping Ground Response Spectrum,  
Horizontal Component 2 - SSE

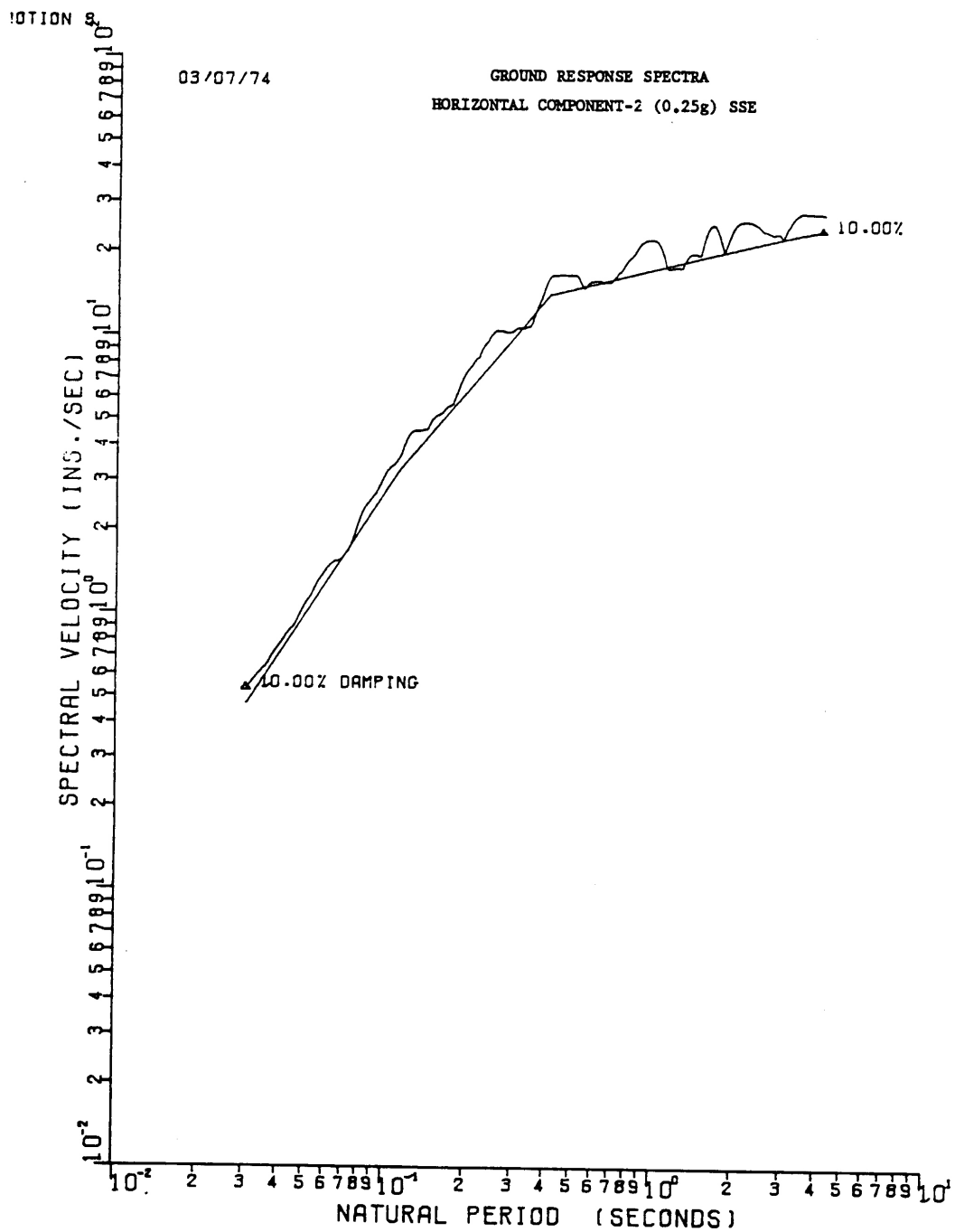
Figure 3.7(B)-13



SEABROOK STATION  
UPDATED FINAL SAFETY  
ANALYSIS REPORT

7% Critical Damping Ground Response Spectrum,  
Horizontal Component 2 - SSE

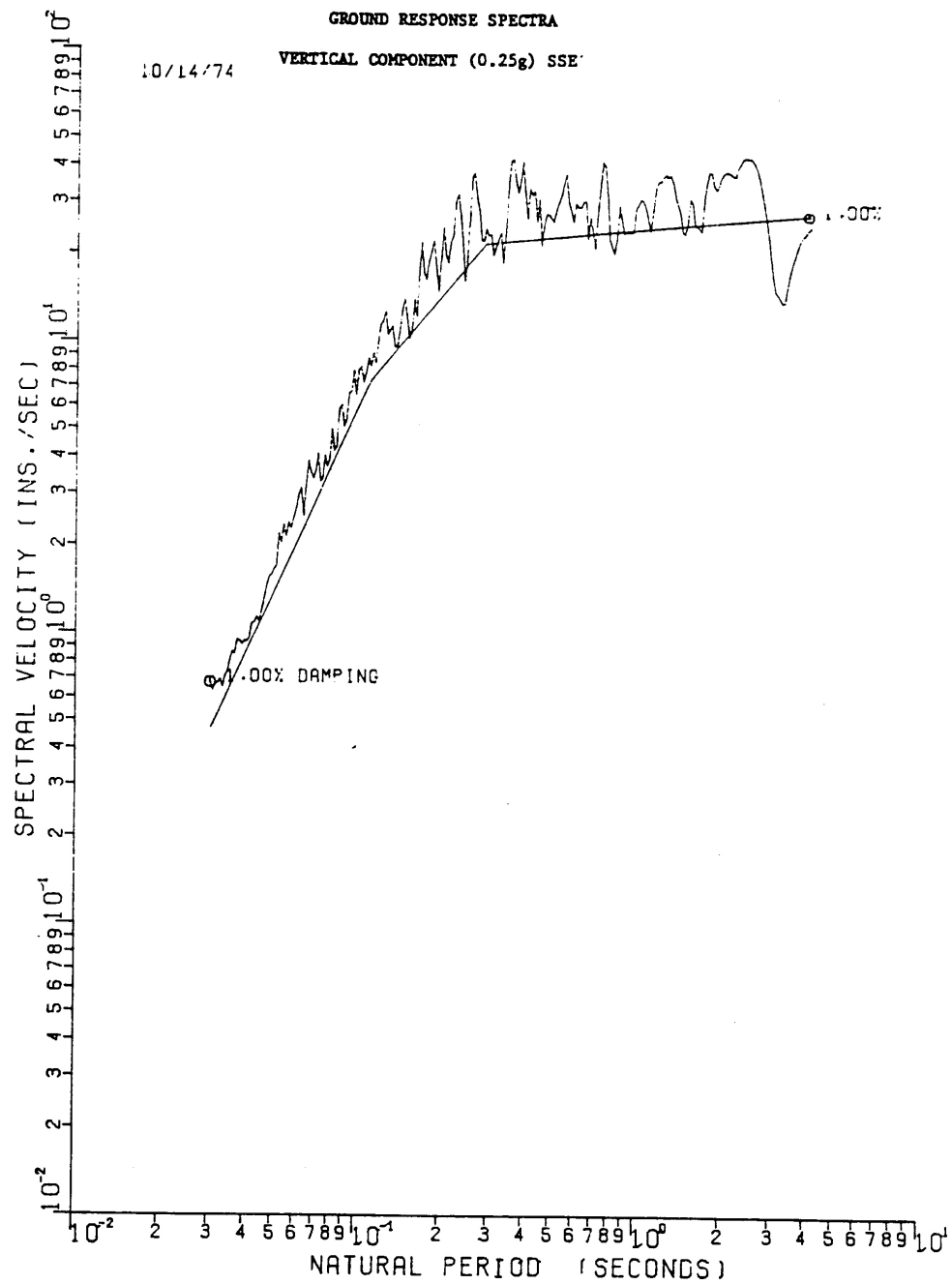
Figure 3.7(B)-14



SEABROOK STATION  
UPDATED FINAL SAFETY  
ANALYSIS REPORT

10% Critical Damping Ground Response Spectrum,  
Horizontal Component 2 - SSE

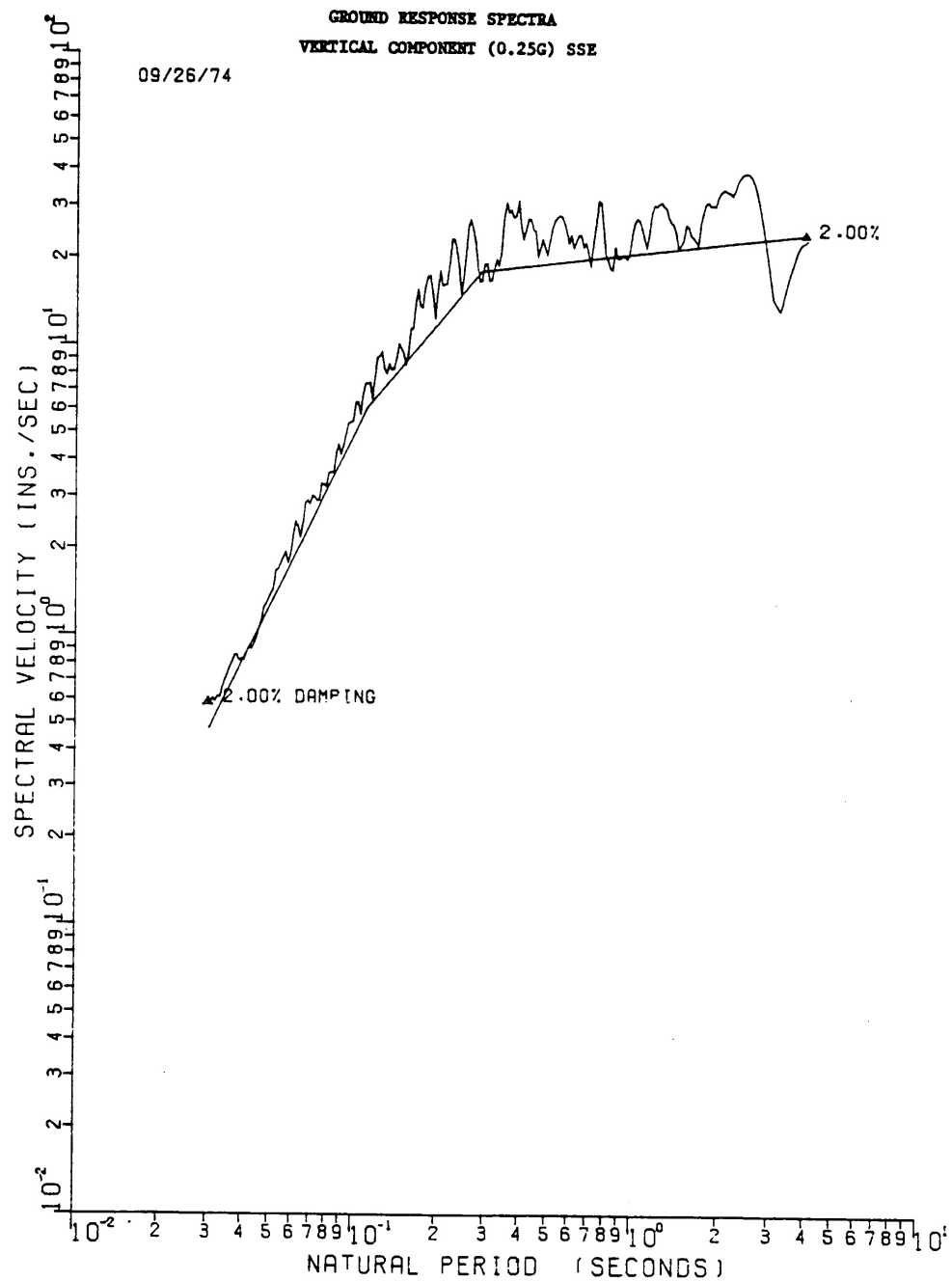
Figure 3.7(B)-15



SEABROOK STATION  
UPDATED FINAL SAFETY  
ANALYSIS REPORT

1% Critical Damping Ground Response Spectrum, Vertical  
Component - SSE

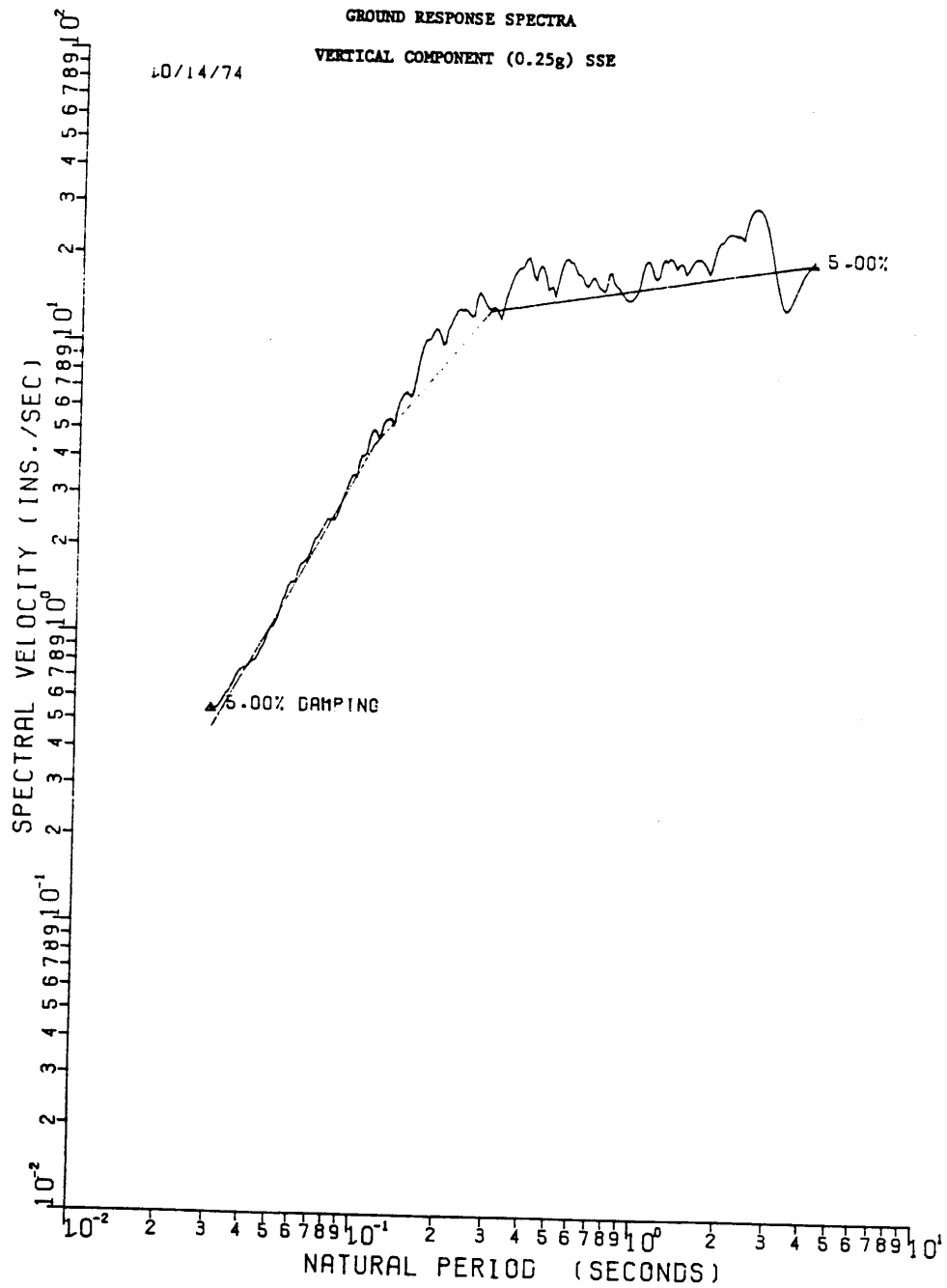
Figure 3.7(B)-16



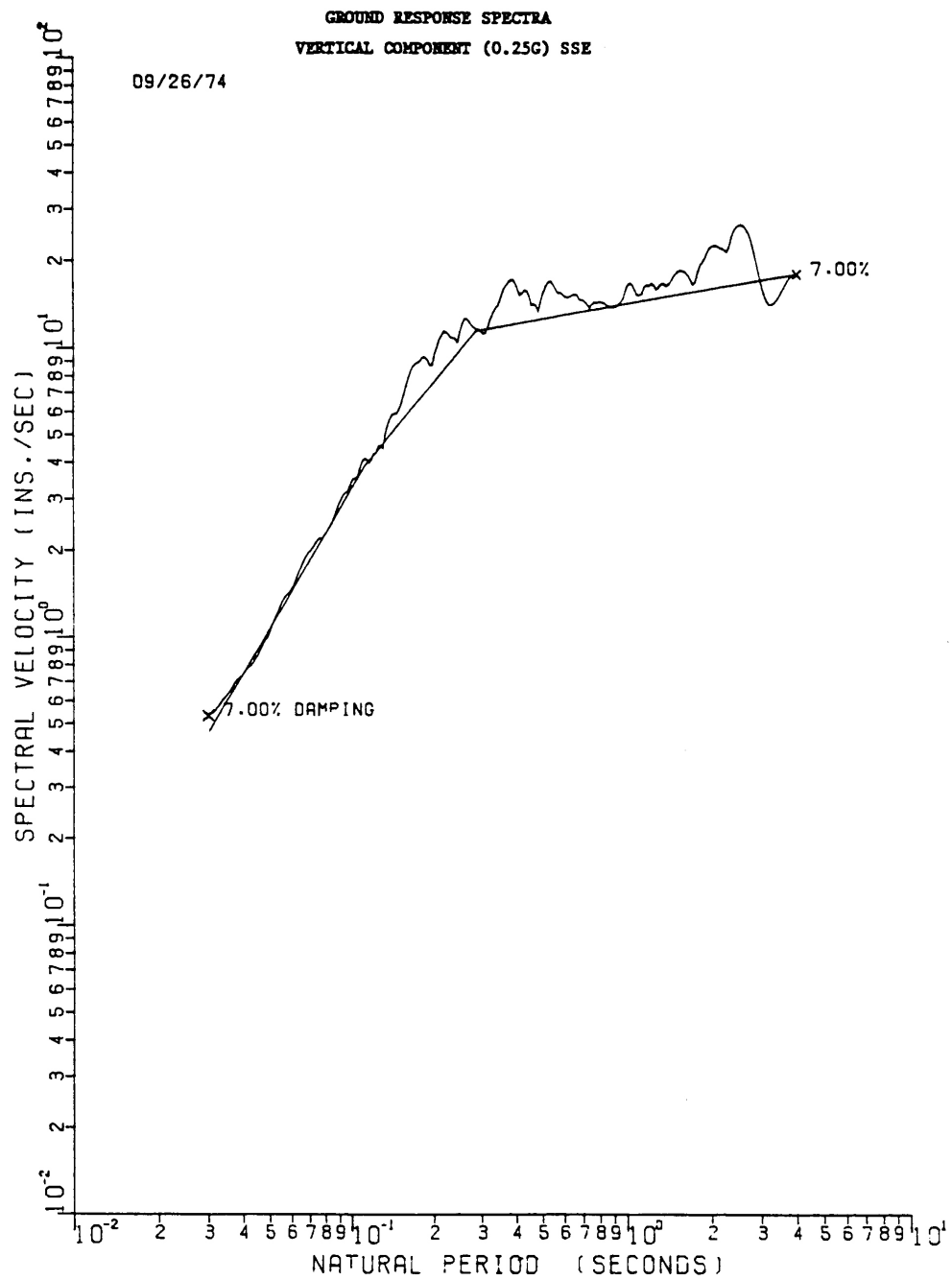
SEABROOK STATION  
UPDATED FINAL SAFETY  
ANALYSIS REPORT

2% Critical Damping Ground Response Spectrum, Vertical  
Component - SSE

Figure 3.7(B)-17



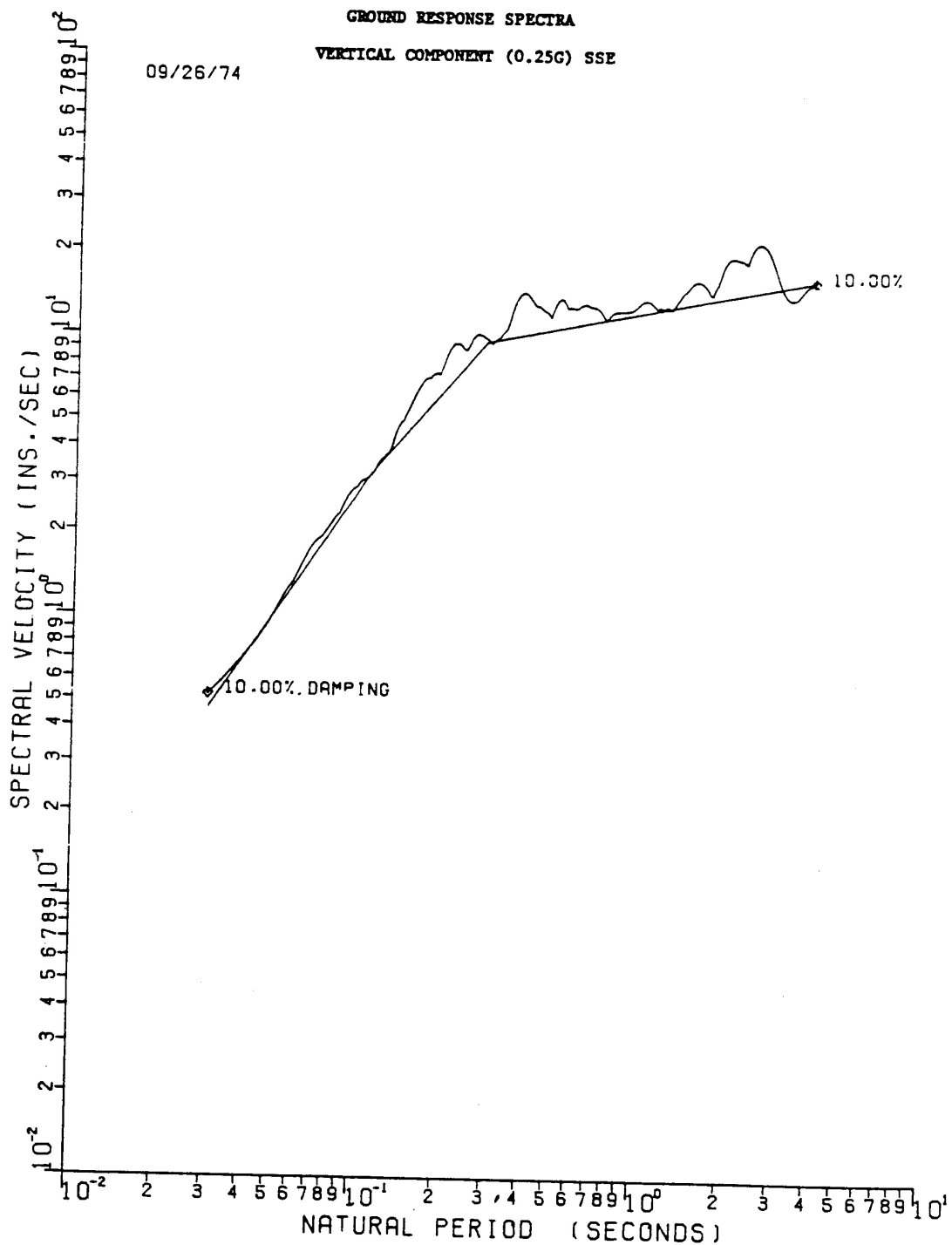
SEABROOK STATION UPDATED FINAL SAFETY ANALYSIS REPORT	5% Critical Damping Ground Response Spectrum, Vertical Component - SSE	
		Figure 3.7(B)-18



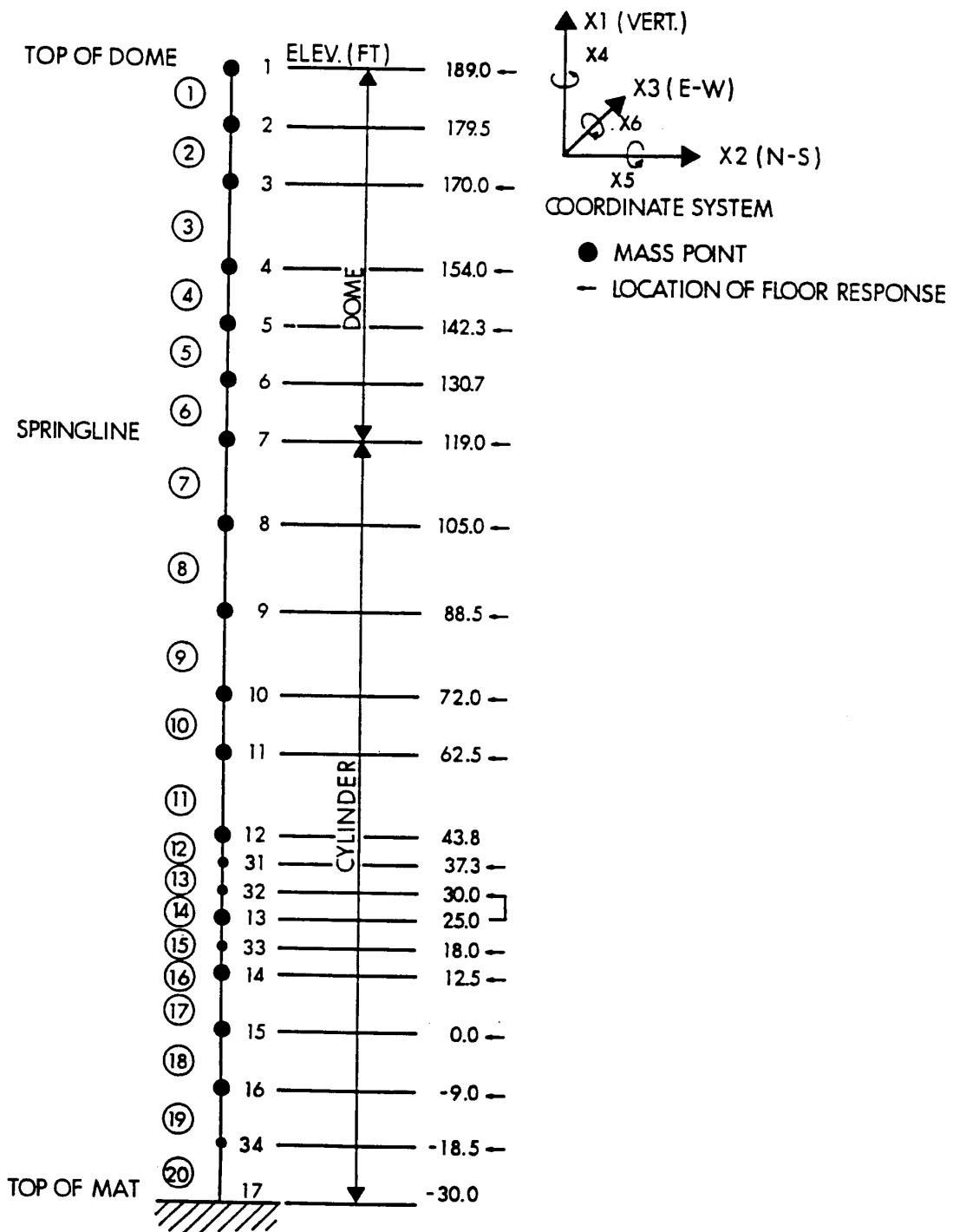
SEABROOK STATION  
UPDATED FINAL SAFETY  
ANALYSIS REPORT

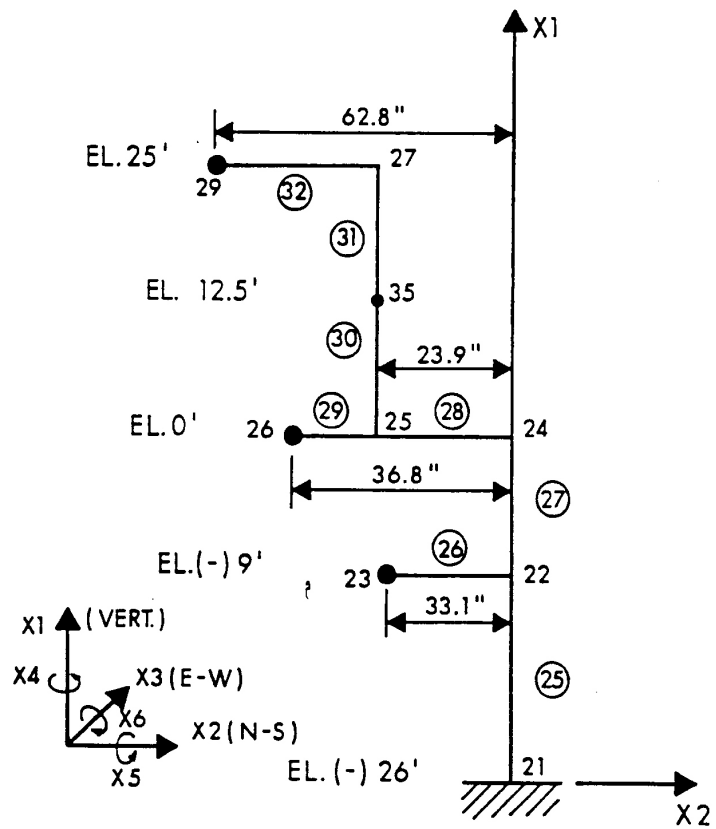
7% Critical Damping Ground Response Spectrum, Vertical  
Component - SSE

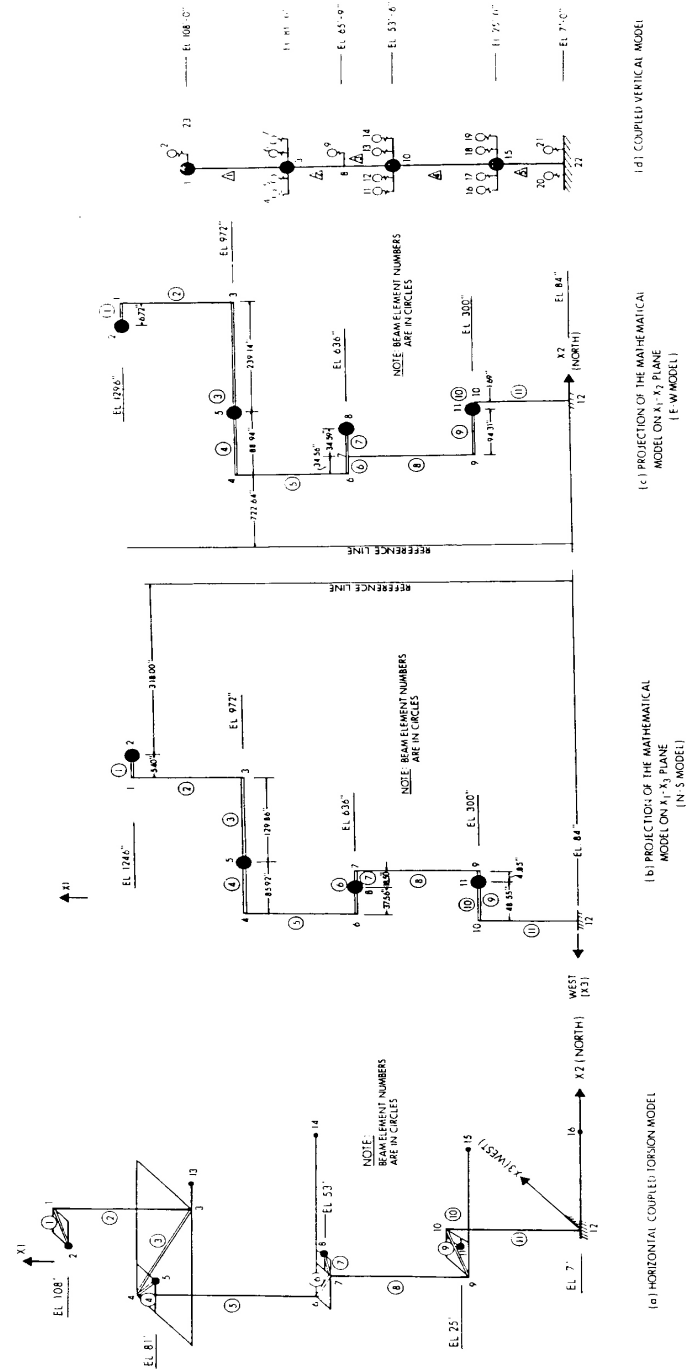
Figure 3.7(B)-19



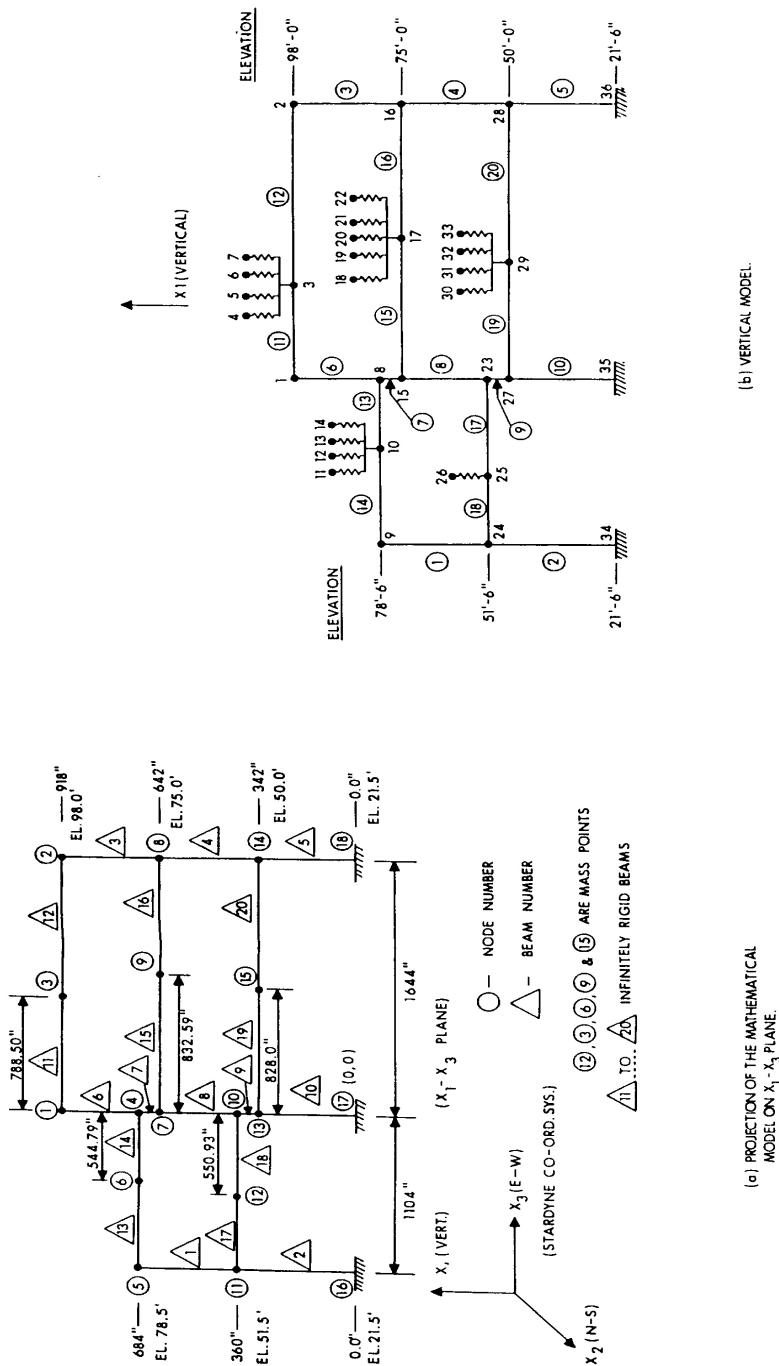
SEABROOK STATION UPDATED FINAL SAFETY ANALYSIS REPORT	10% Critical Damping Ground Response Spectrum, Vertical Component - SSE	
		Figure 3.7(B)-20



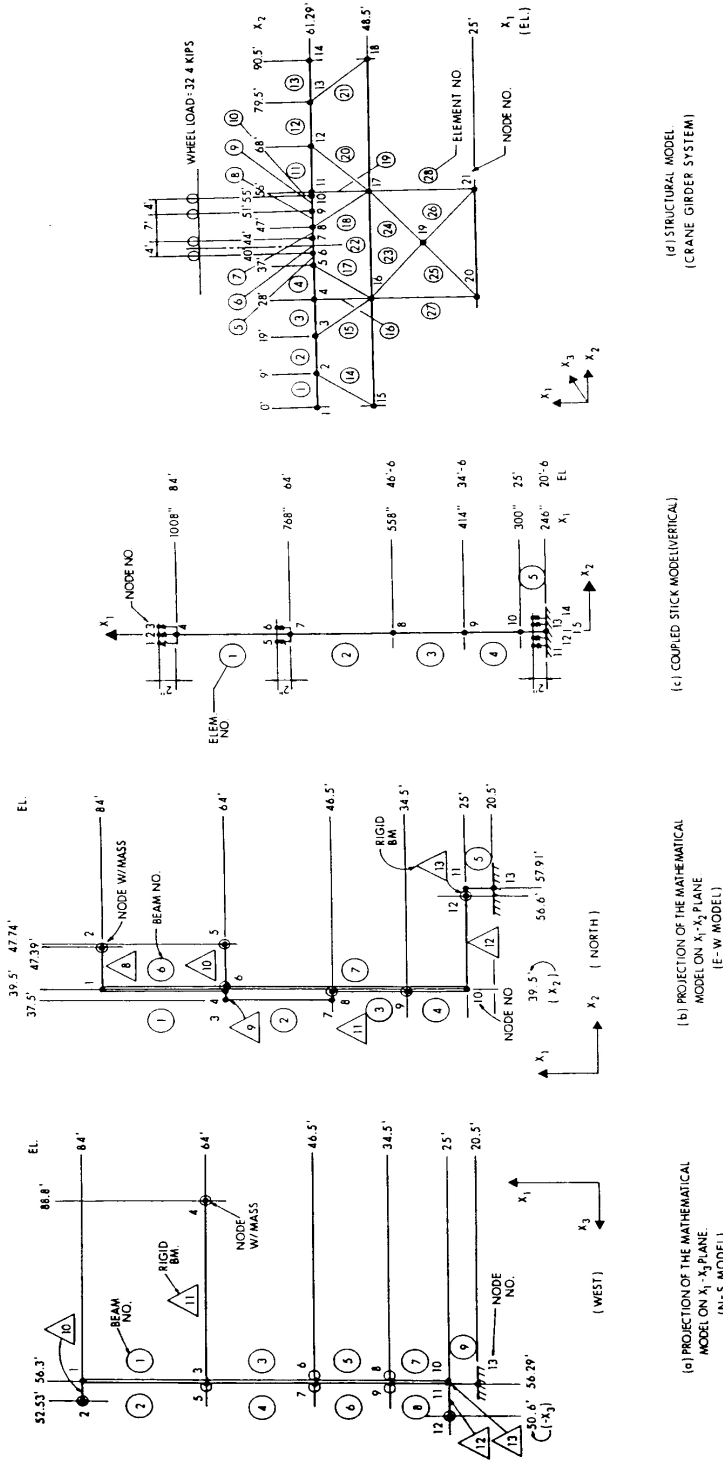


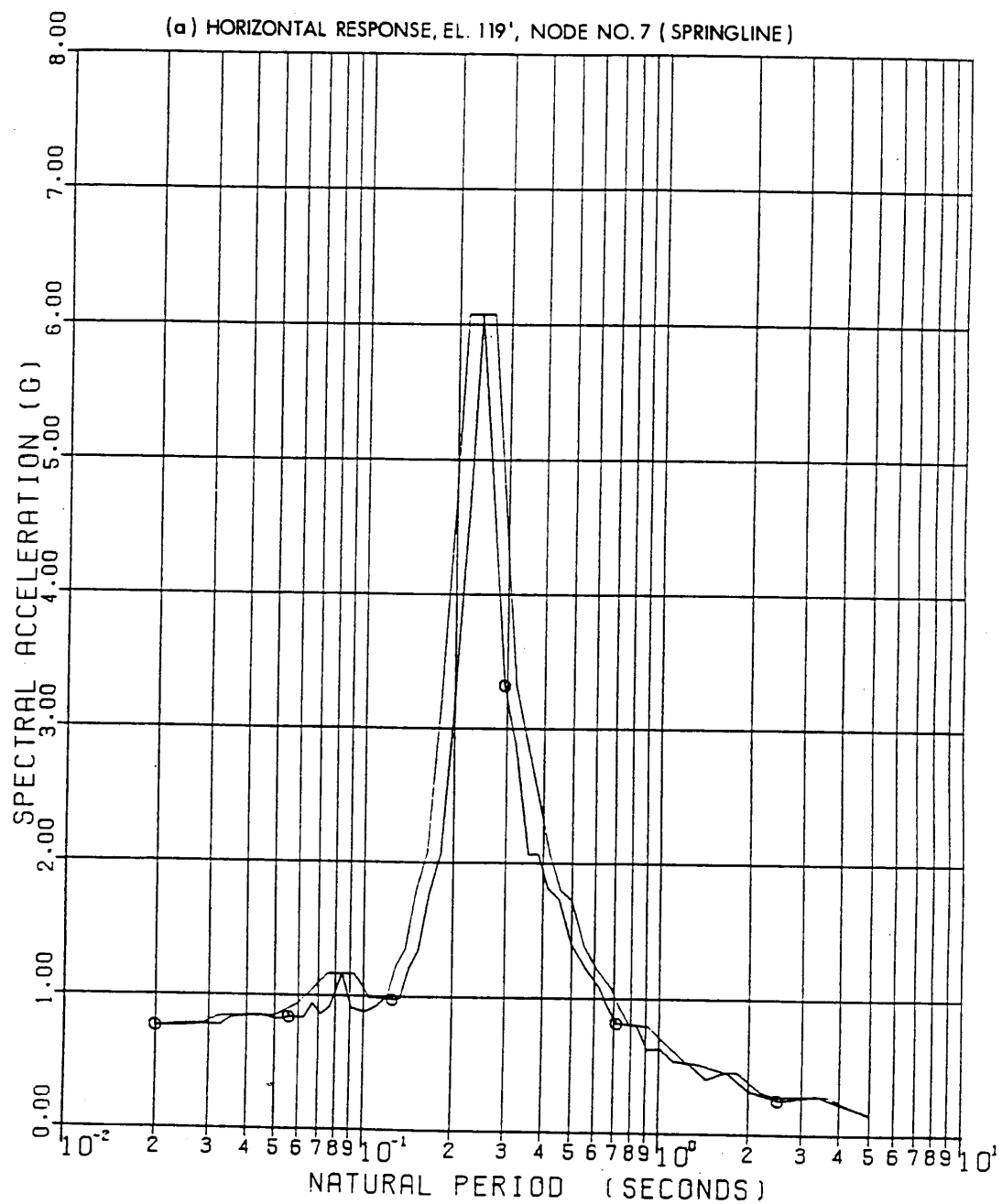


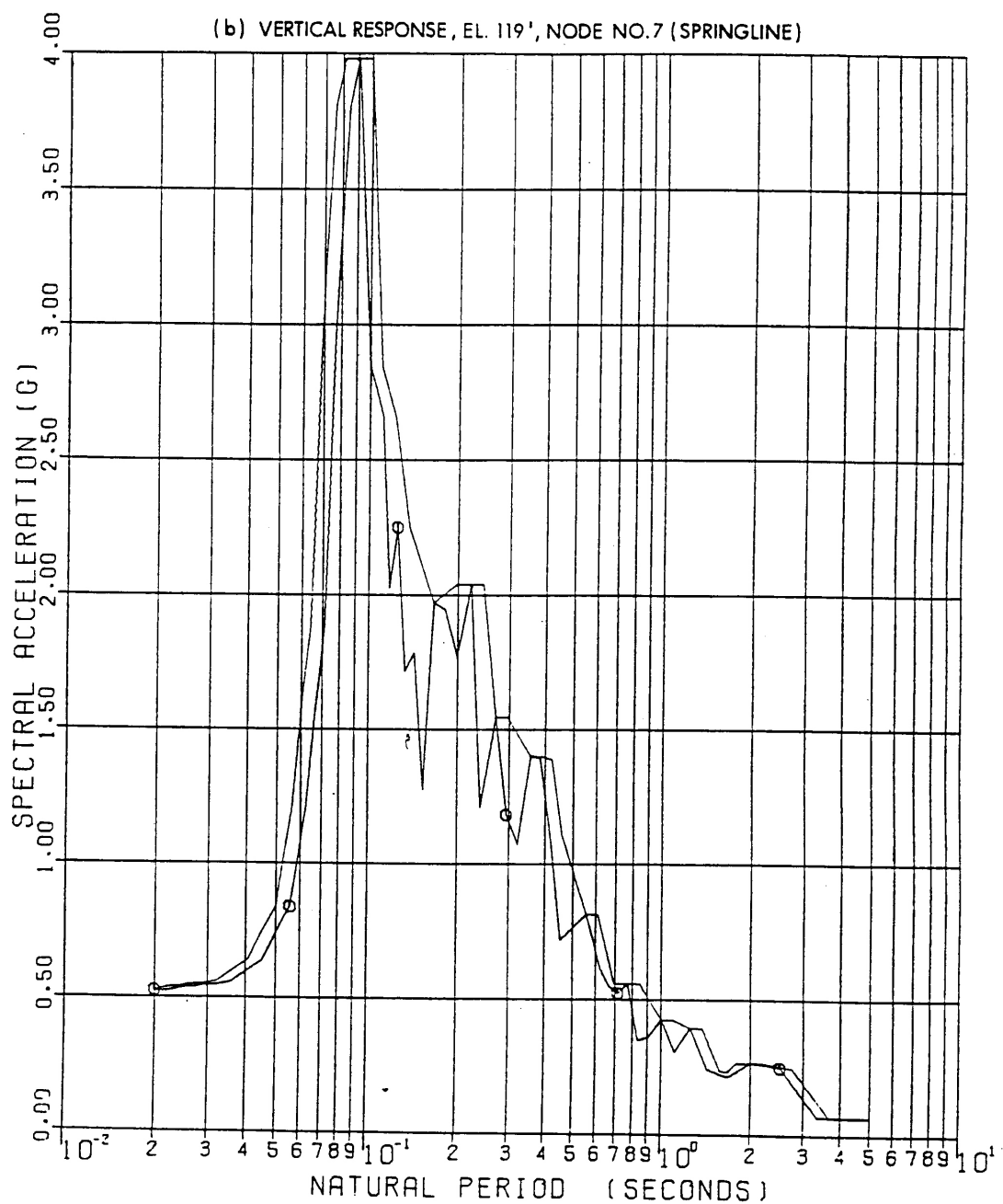
SEABROOK STATION UPDATED FINAL SAFETY ANALYSIS REPORT	Primary Auxiliary Building Seismic Analysis - Mathematical Model	
	Figure	3.7(B)-23

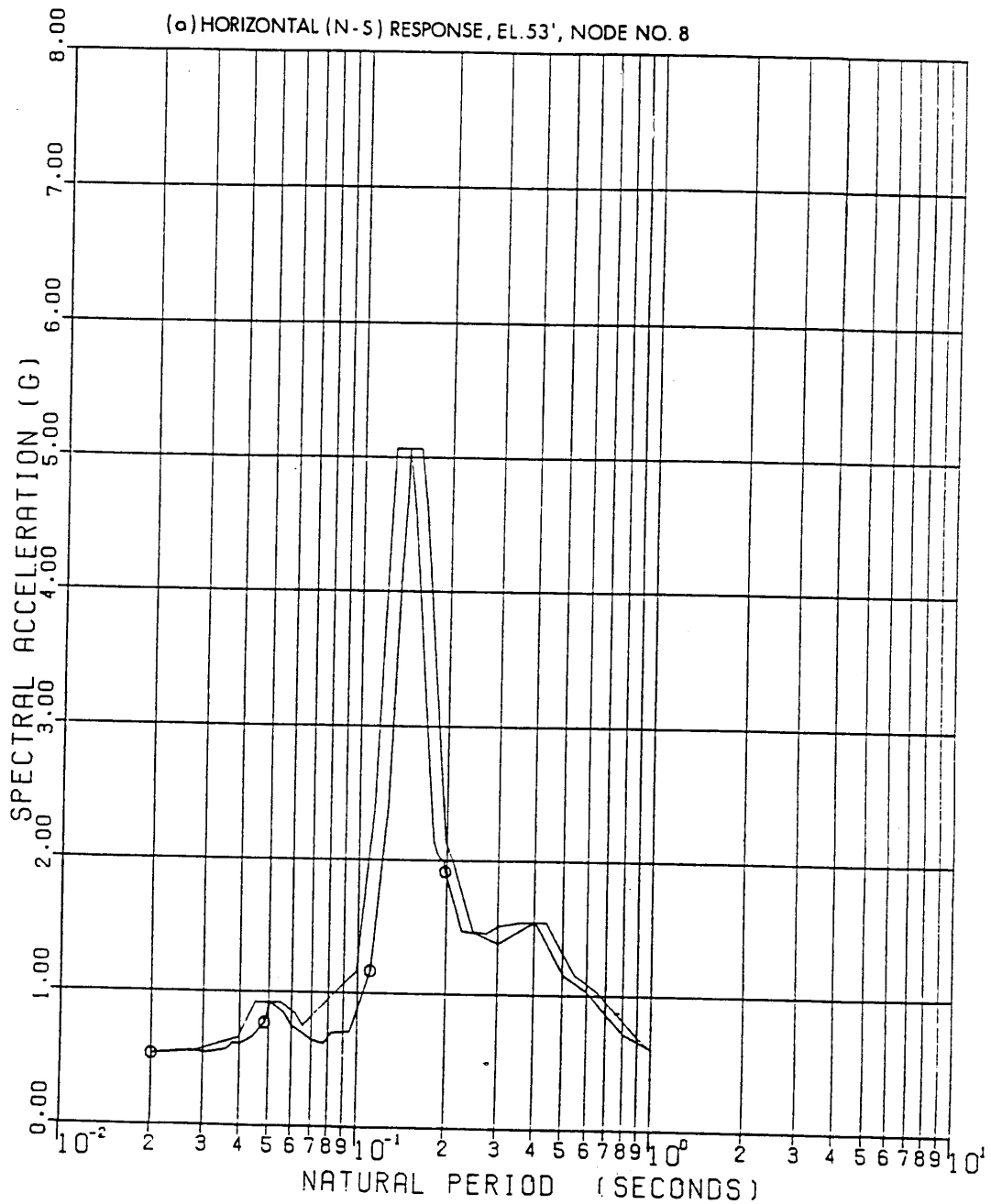


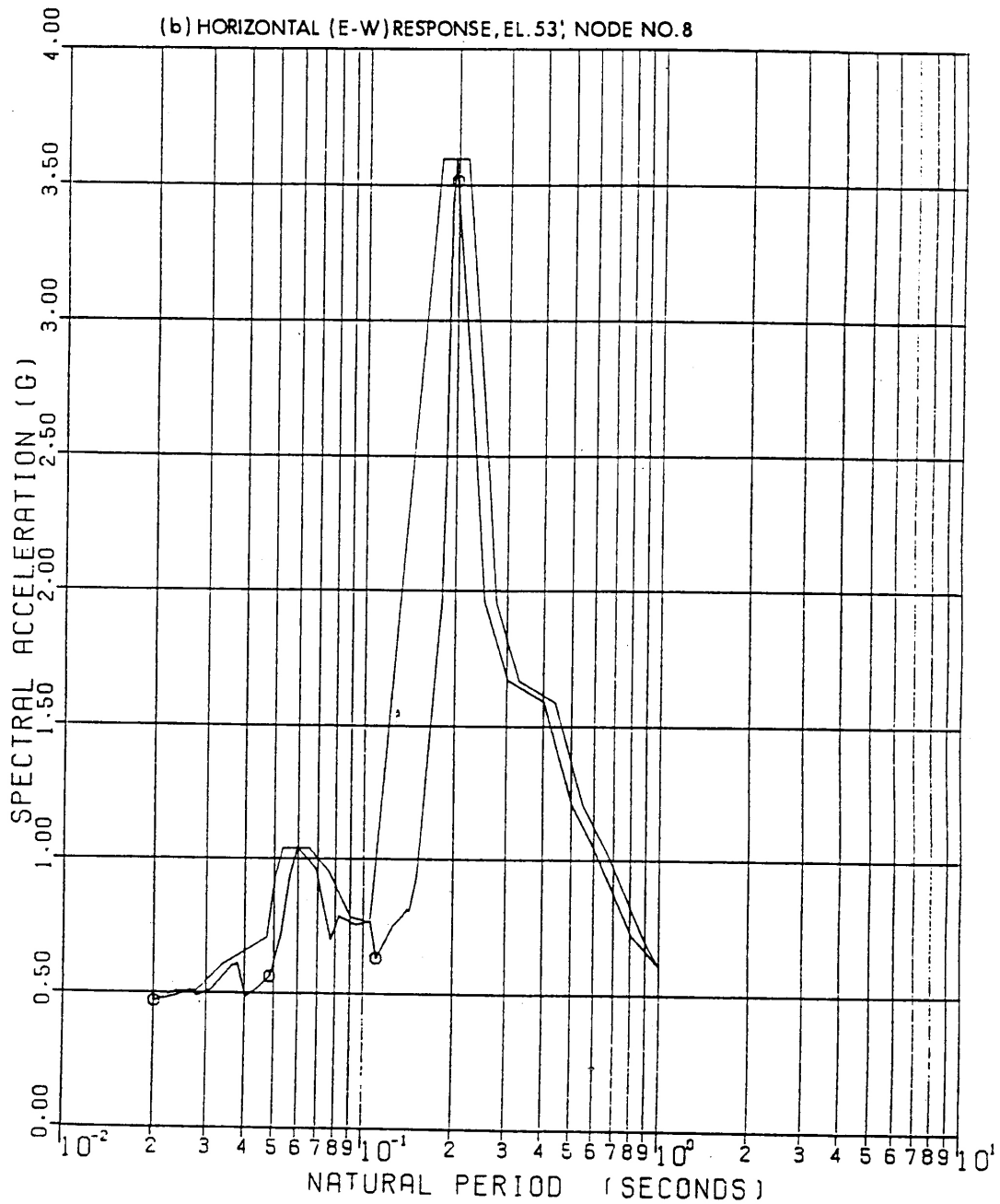
SEABROOK STATION UPDATED FINAL SAFETY ANALYSIS REPORT	Fuel Storage Building Seismic Analysis - Mathematical Model	
		Figure 3.7(B)-25

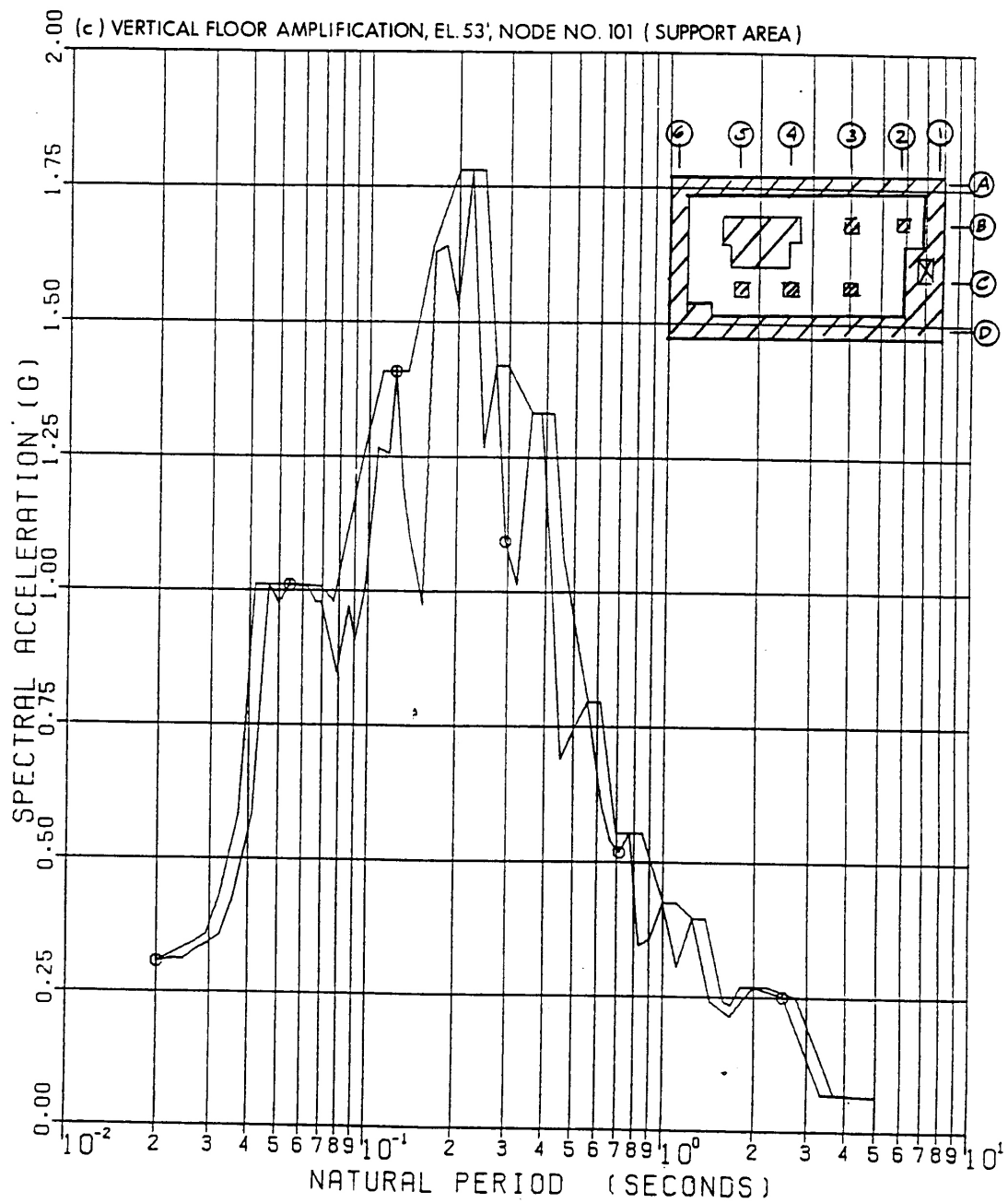


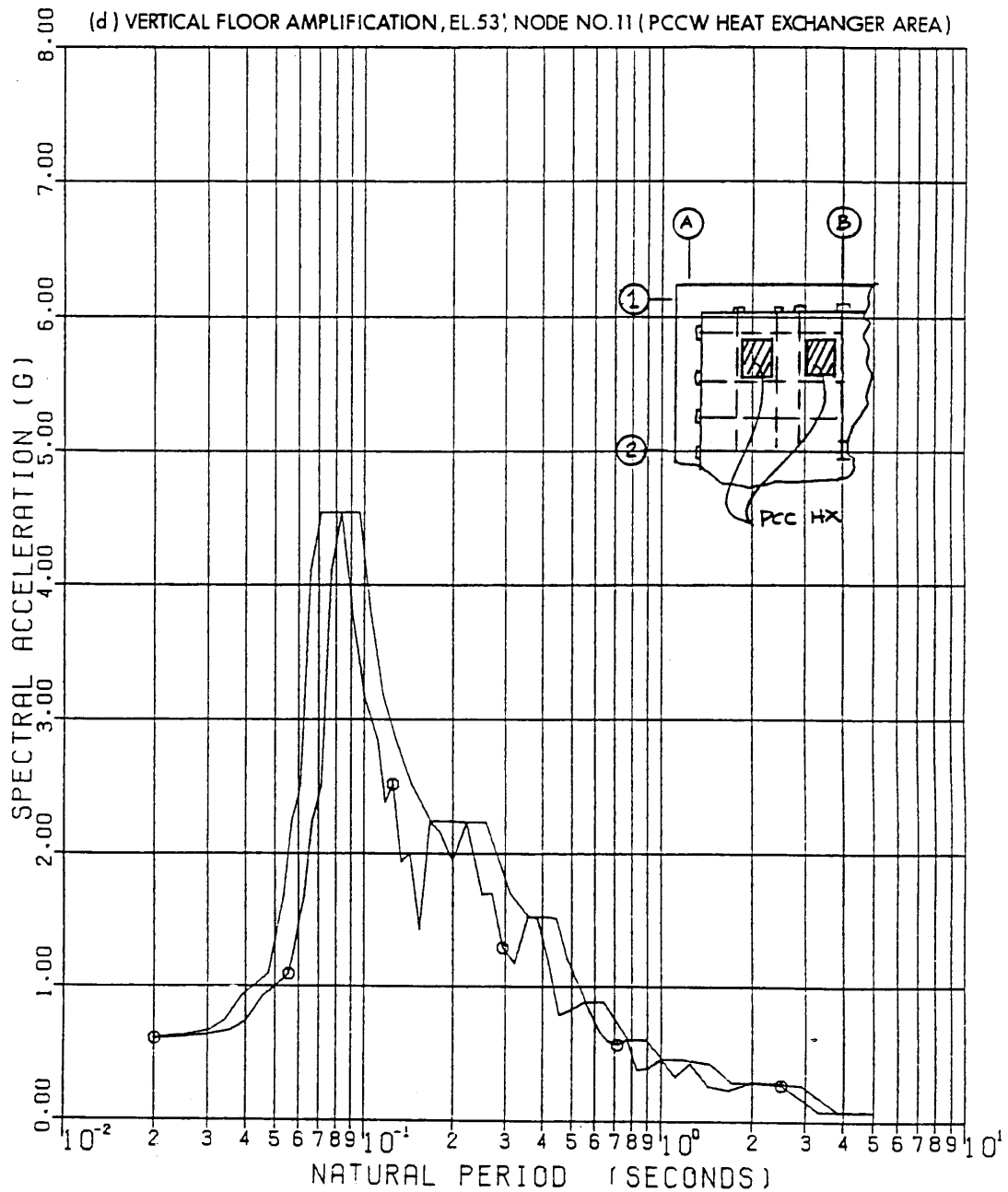


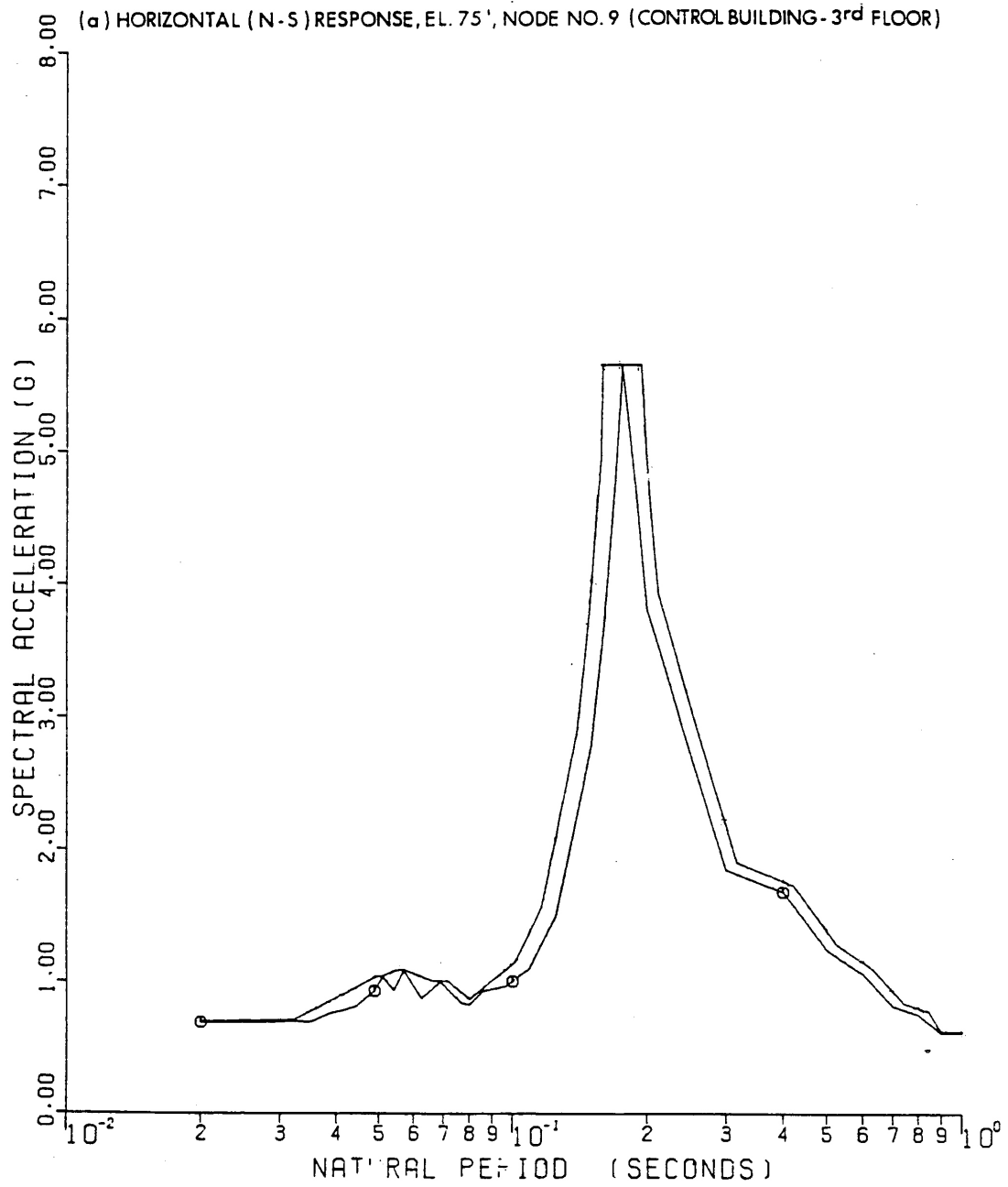




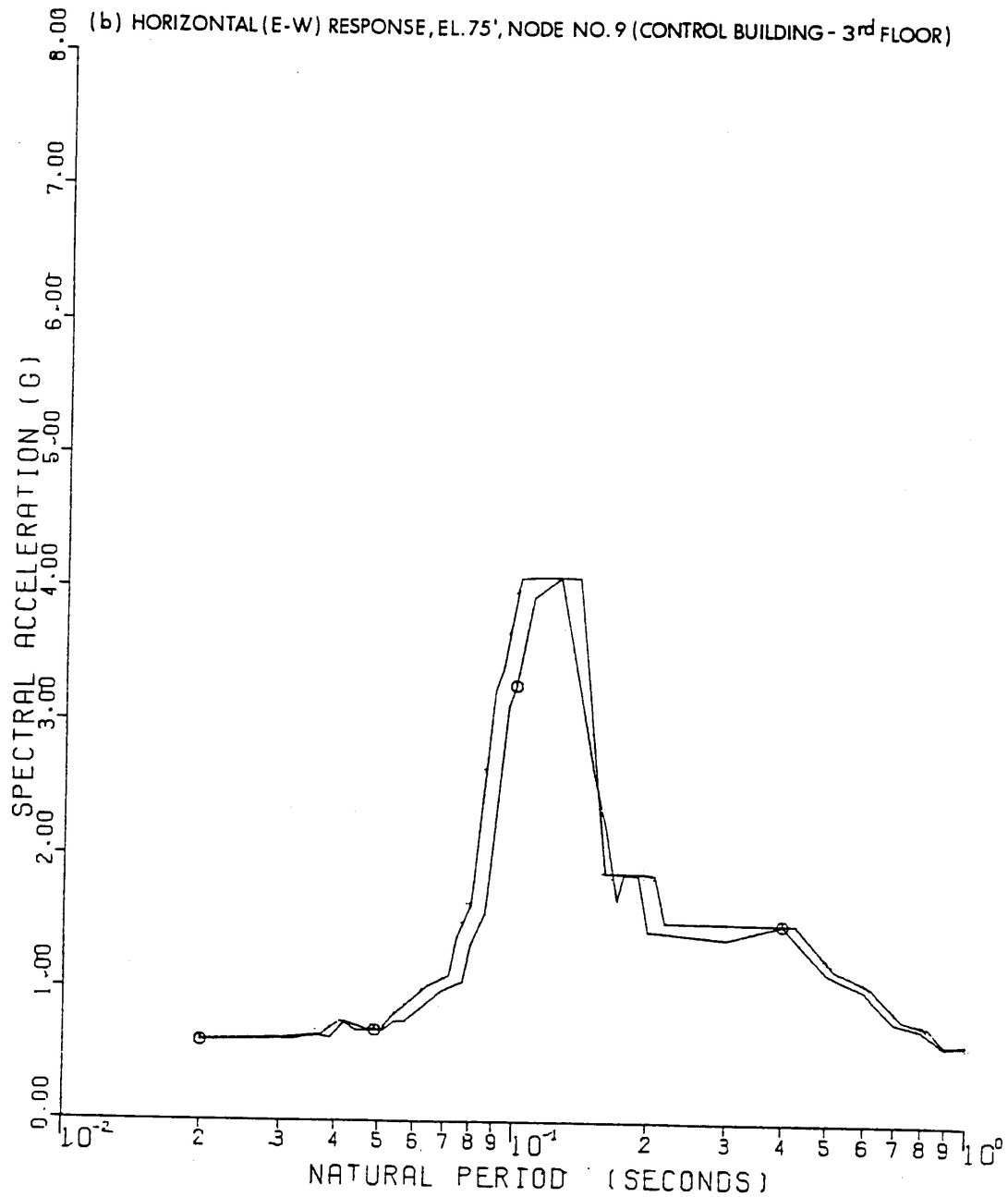


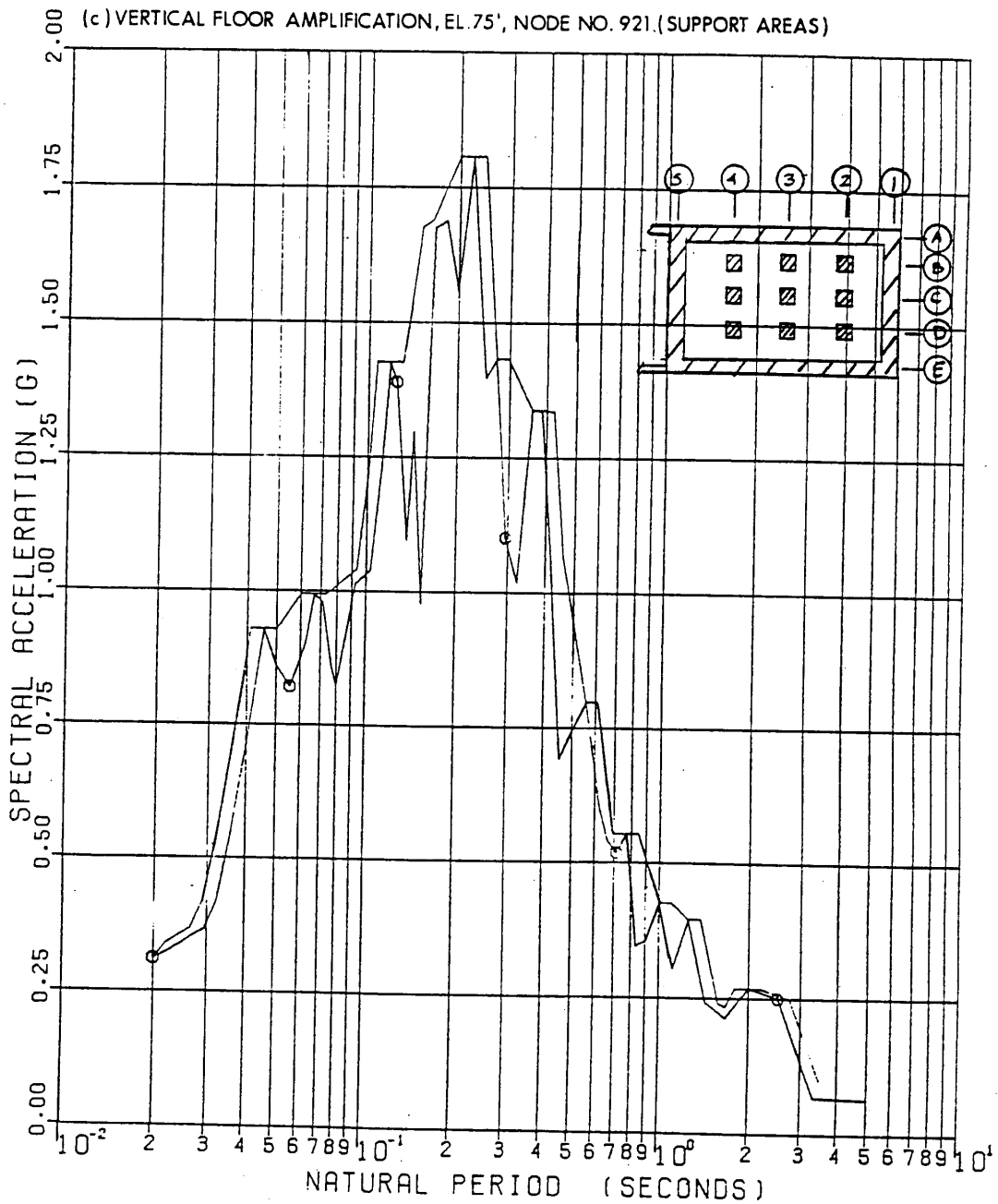


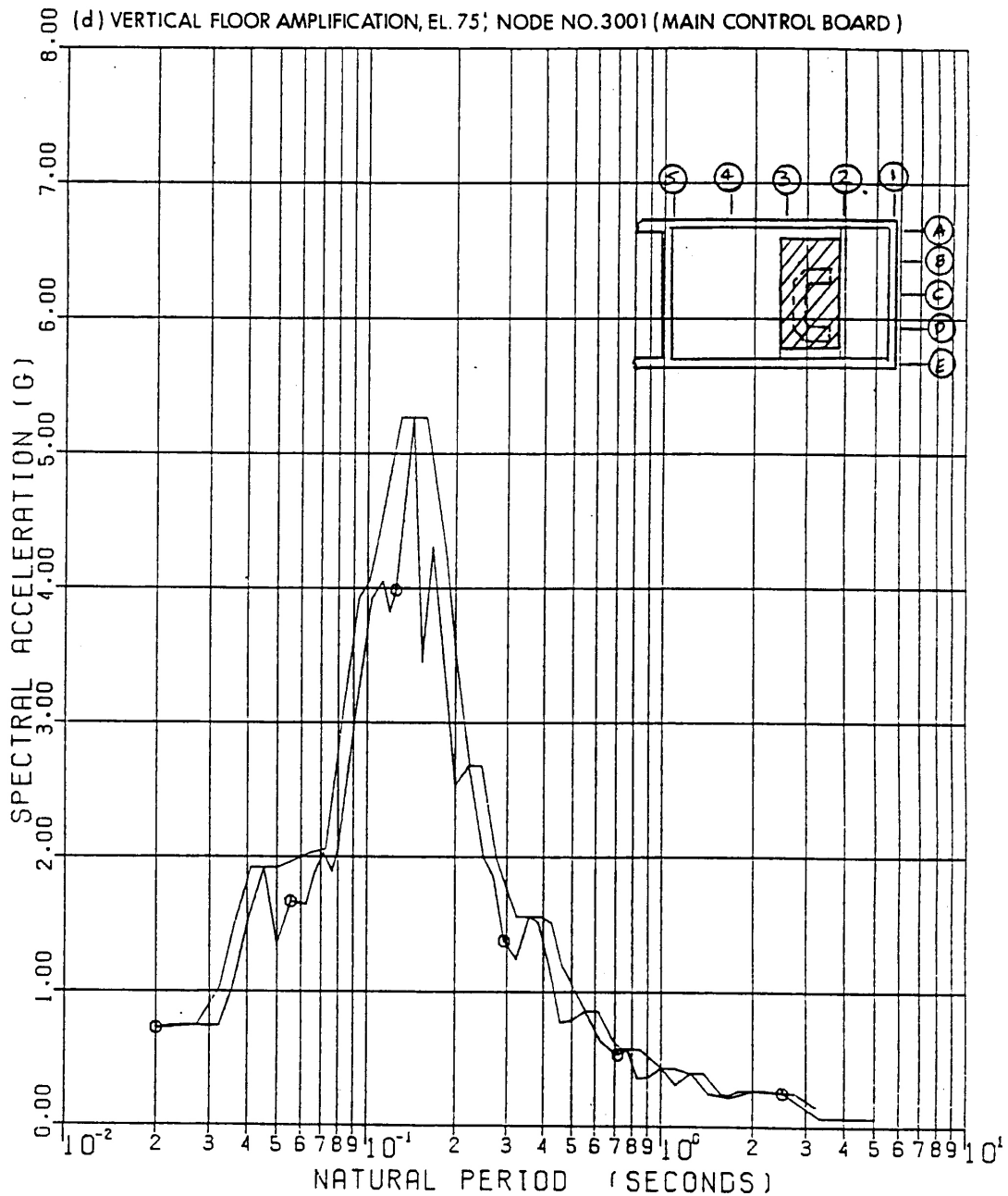


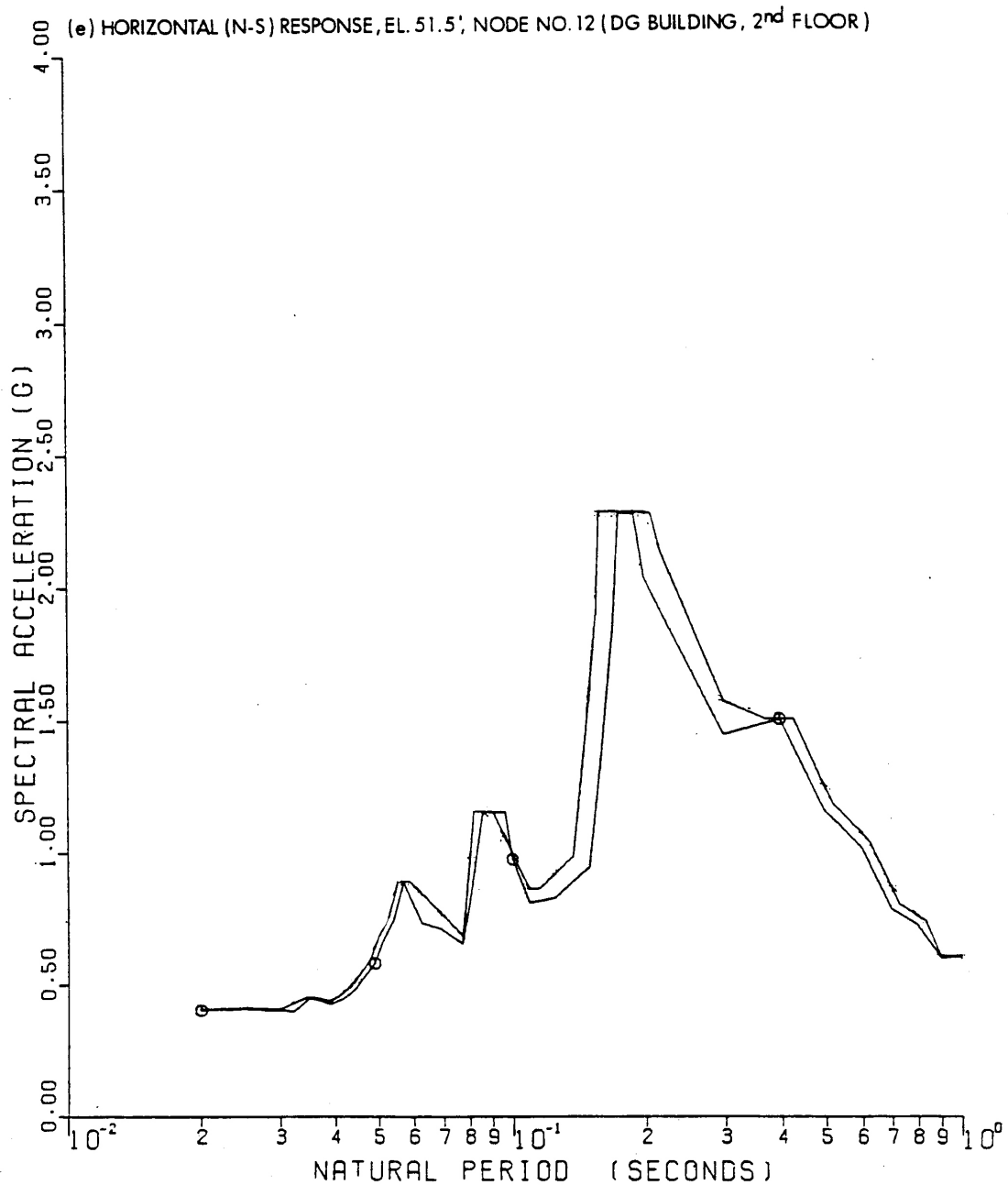


SEABROOK STATION UPDATED FINAL SAFETY ANALYSIS REPORT	Amplified Response Spectra - SSE - Control/Diesel Generator Building - 7% Structural Damping; 2% Equipment Damping [8 Sheets]	
	Figure 3.7(B)-28	Sh 1 of 8

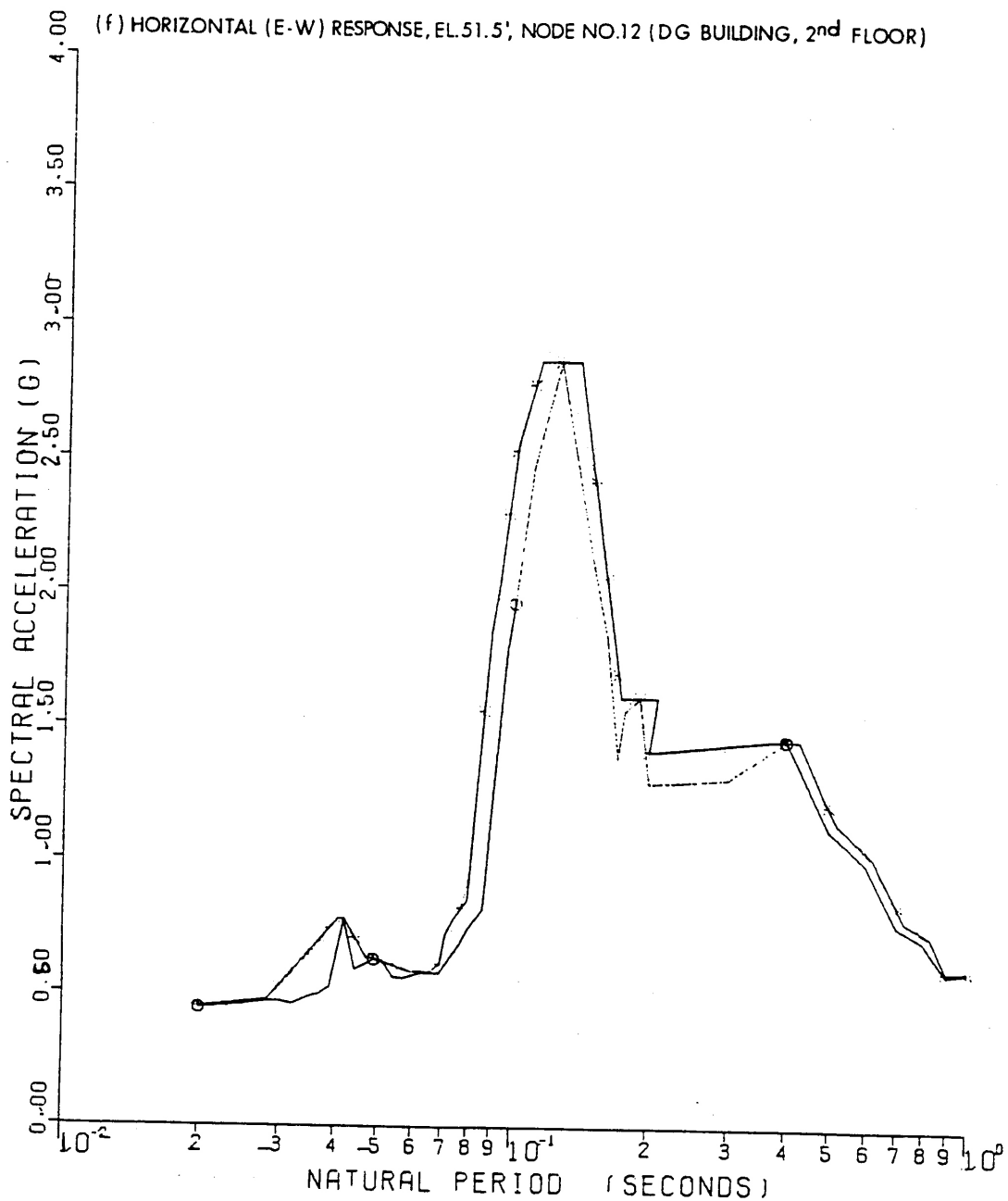


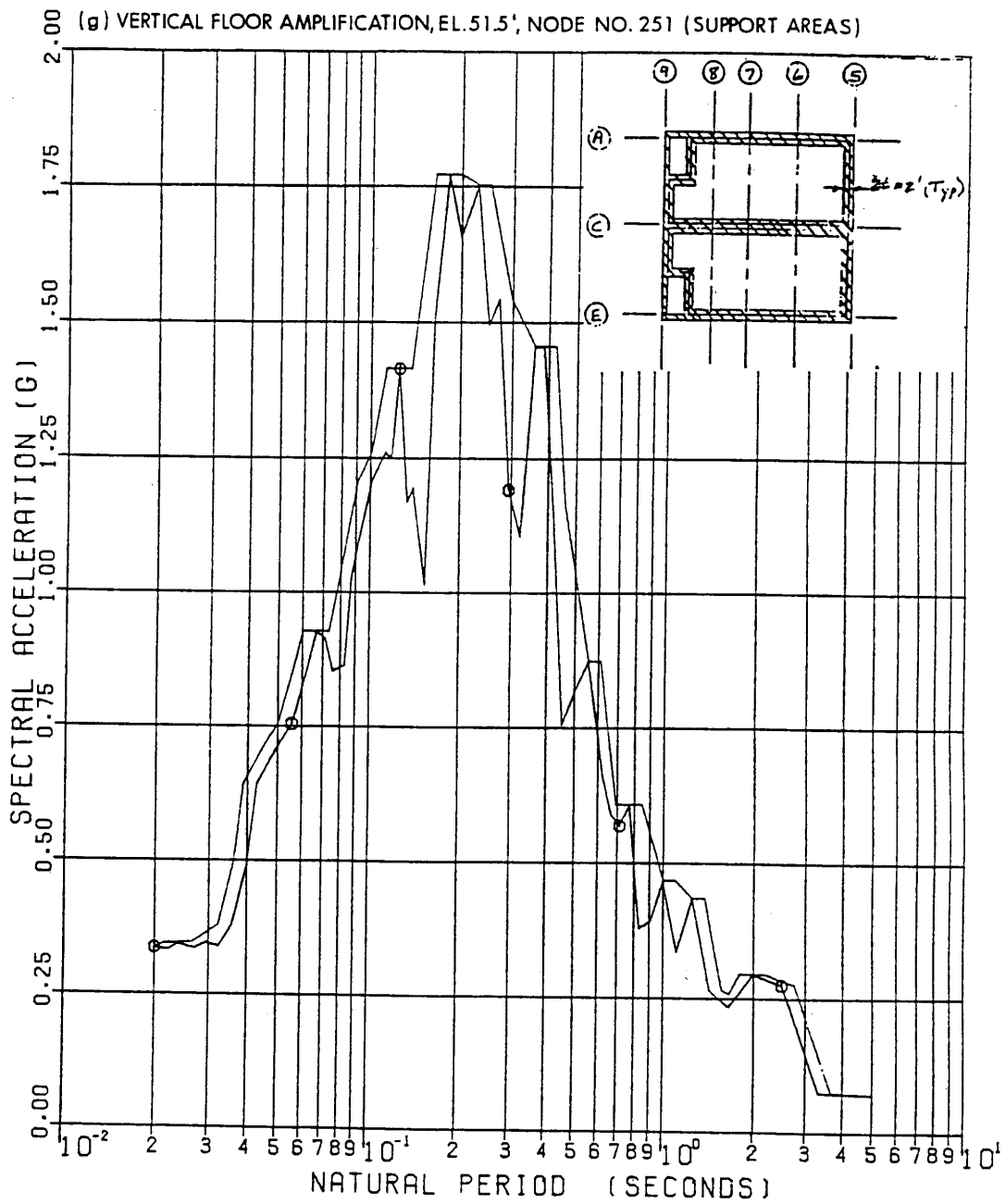


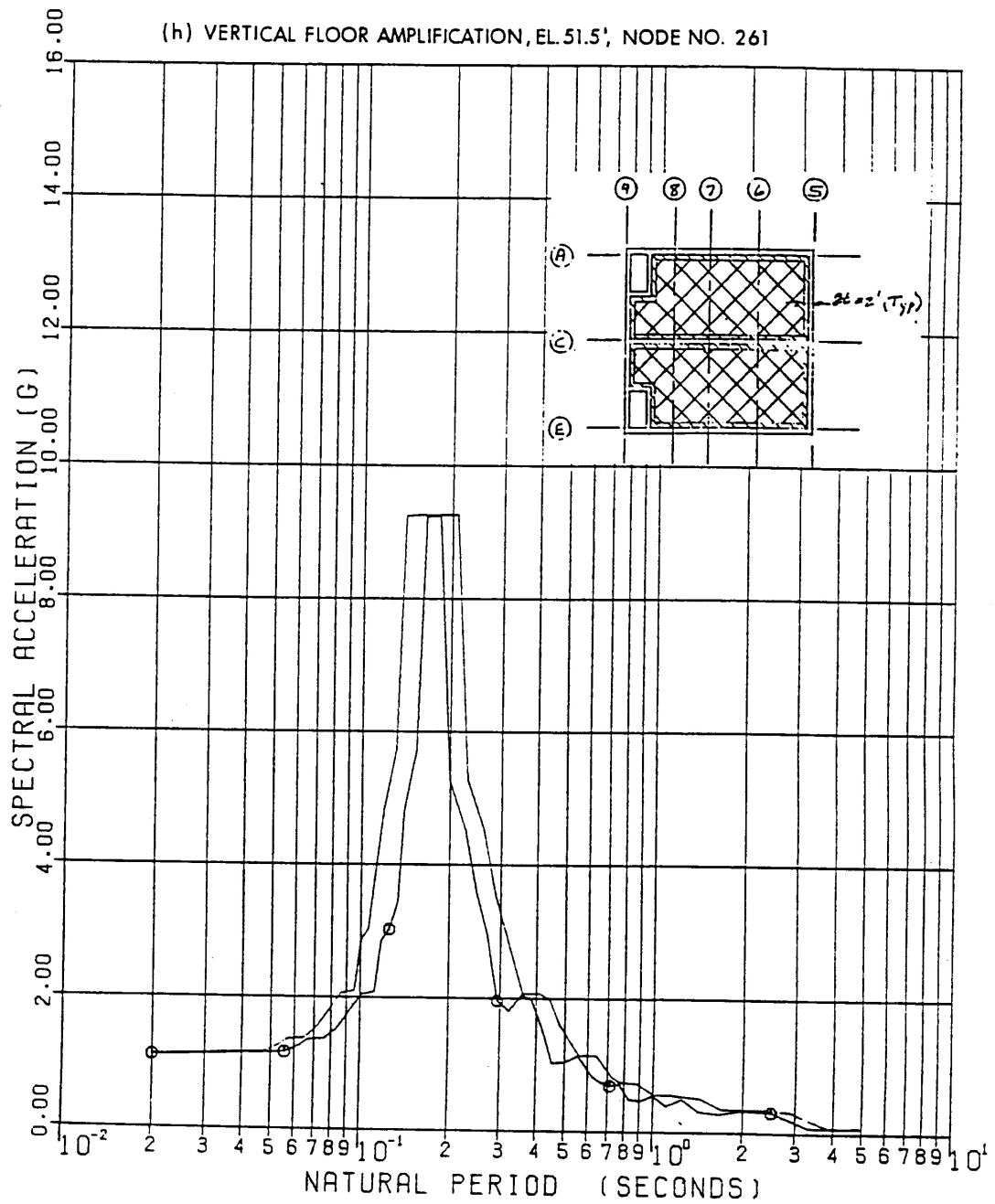


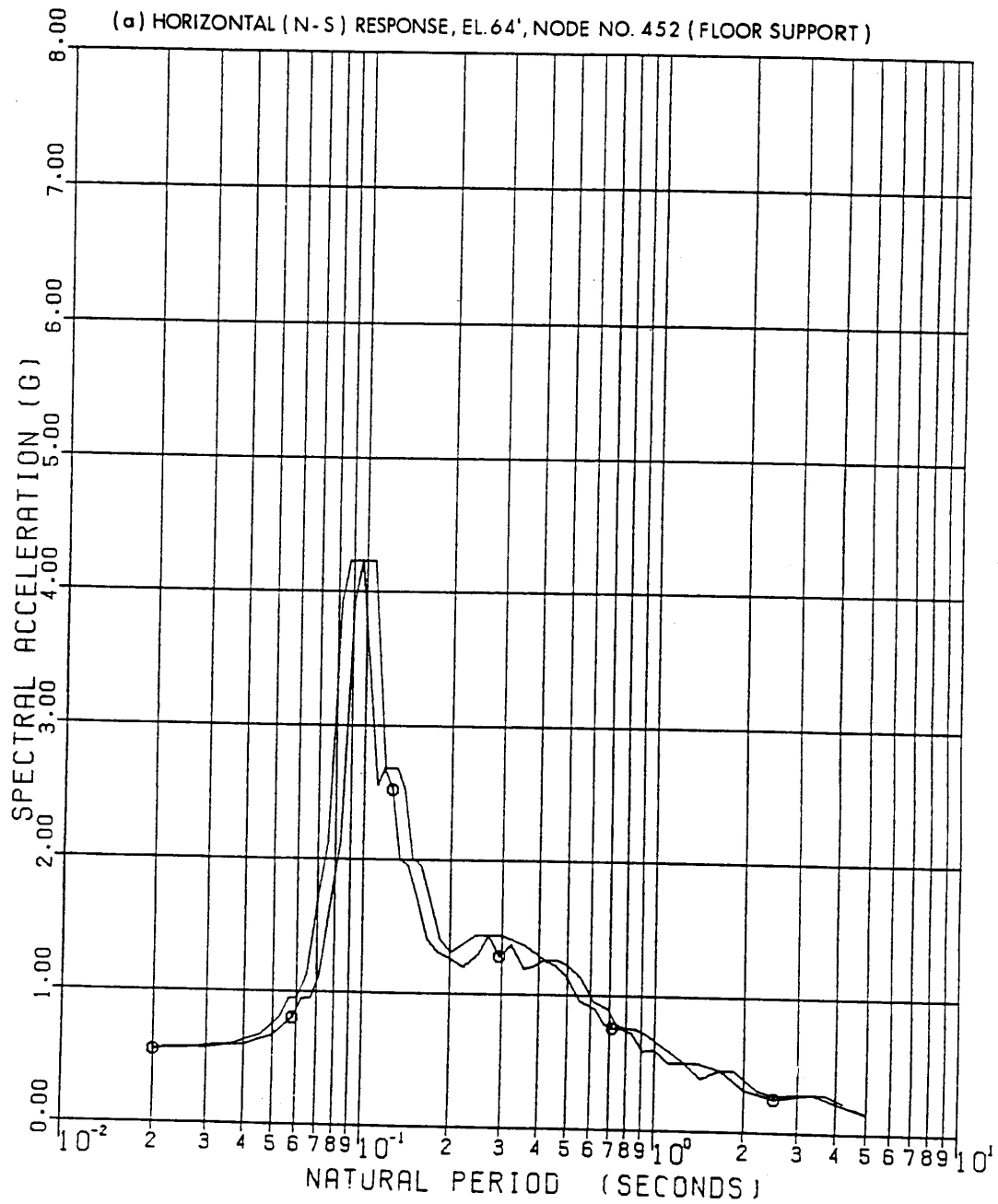


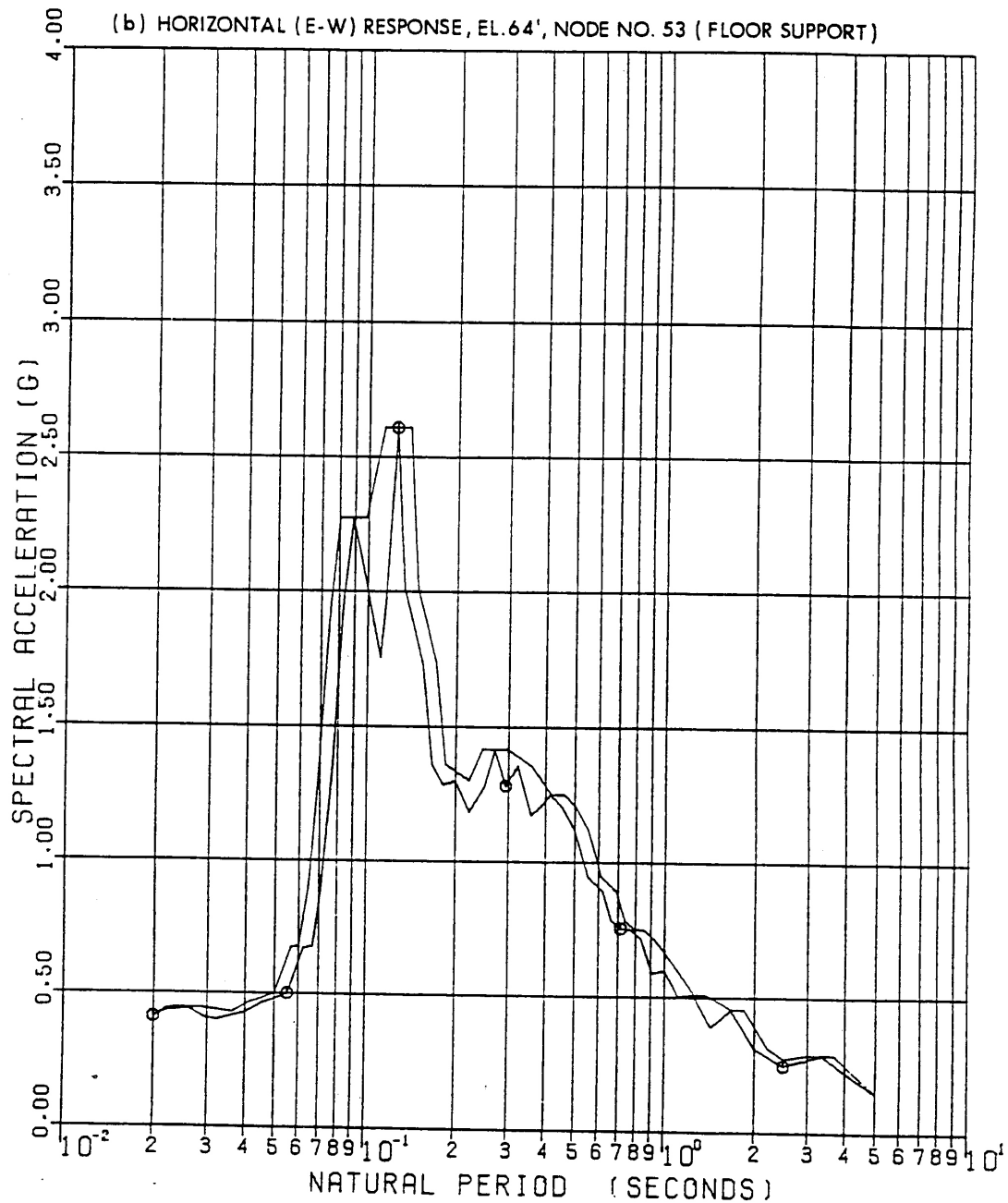
SEABROOK STATION UPDATED FINAL SAFETY ANALYSIS REPORT	Amplified Response Spectra - SSE - Control/Diesel Generator Building - 7% Structural Damping; 2% Equipment Damping [8 Sheets]	
	Figure 3.7(B)-28	Sh 5 of 8

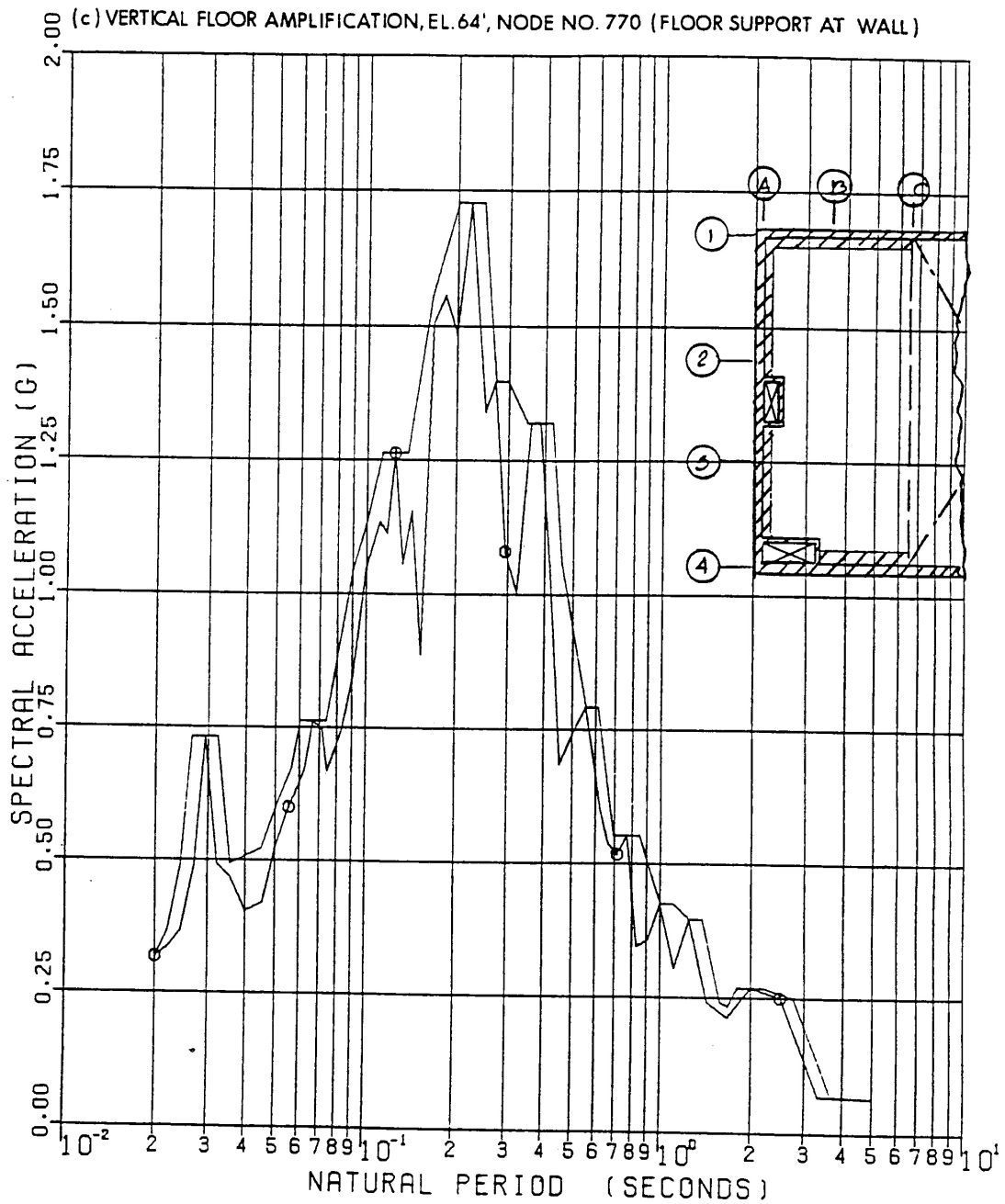


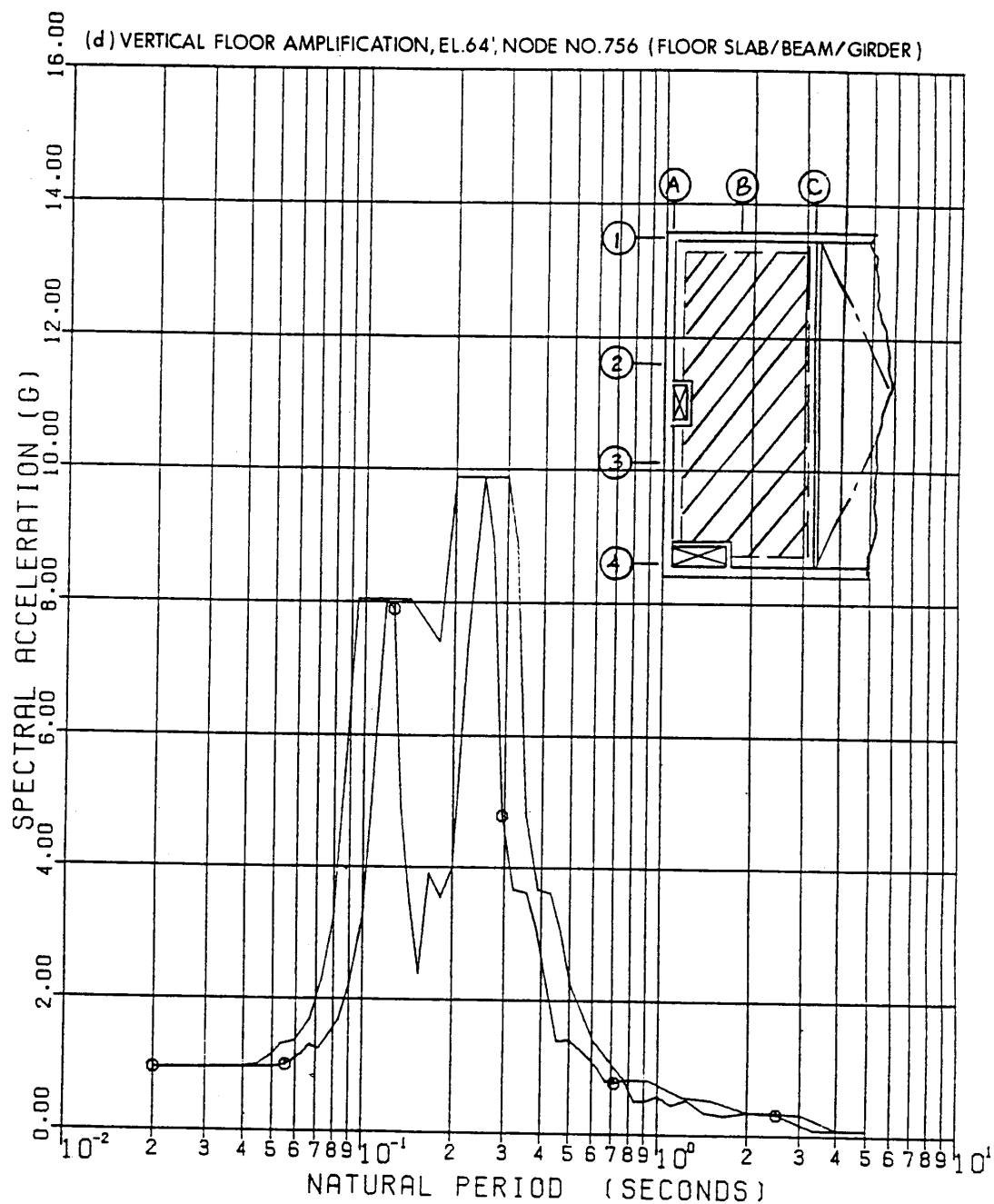


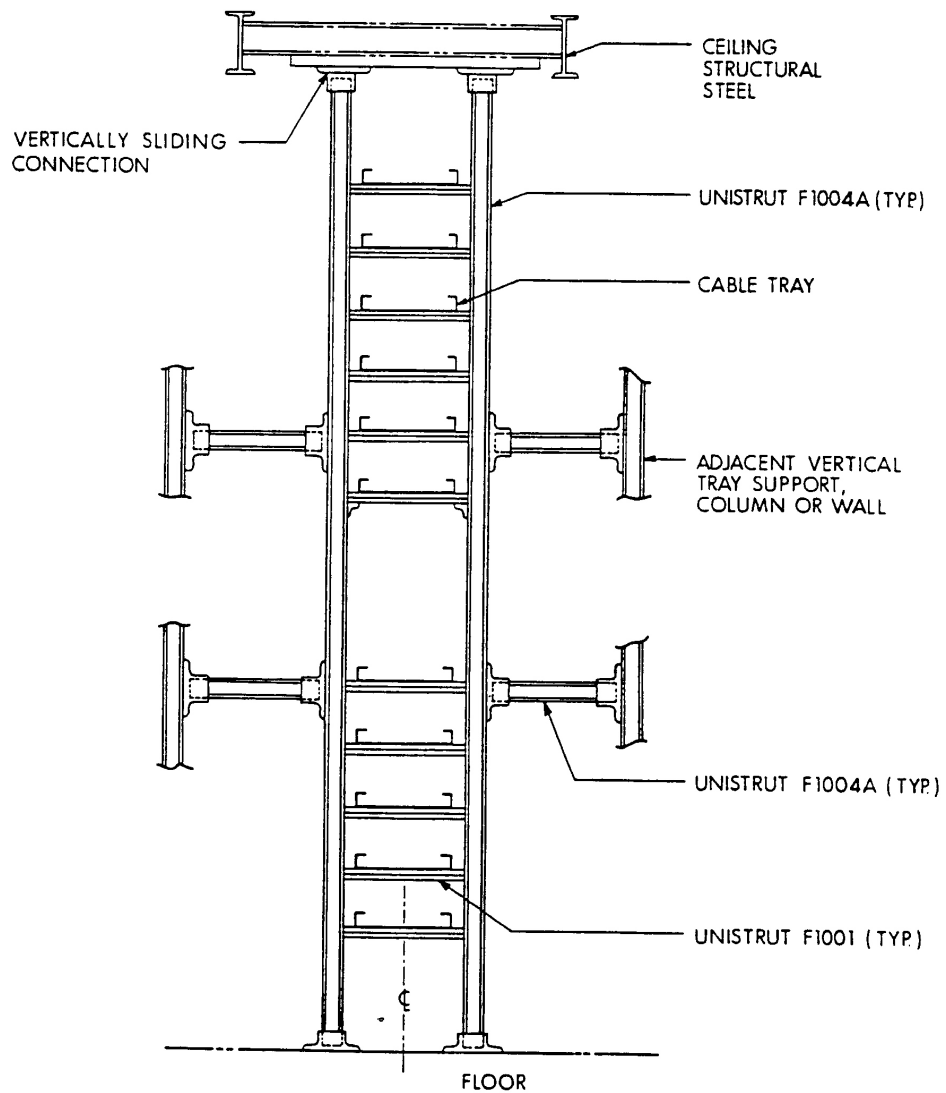




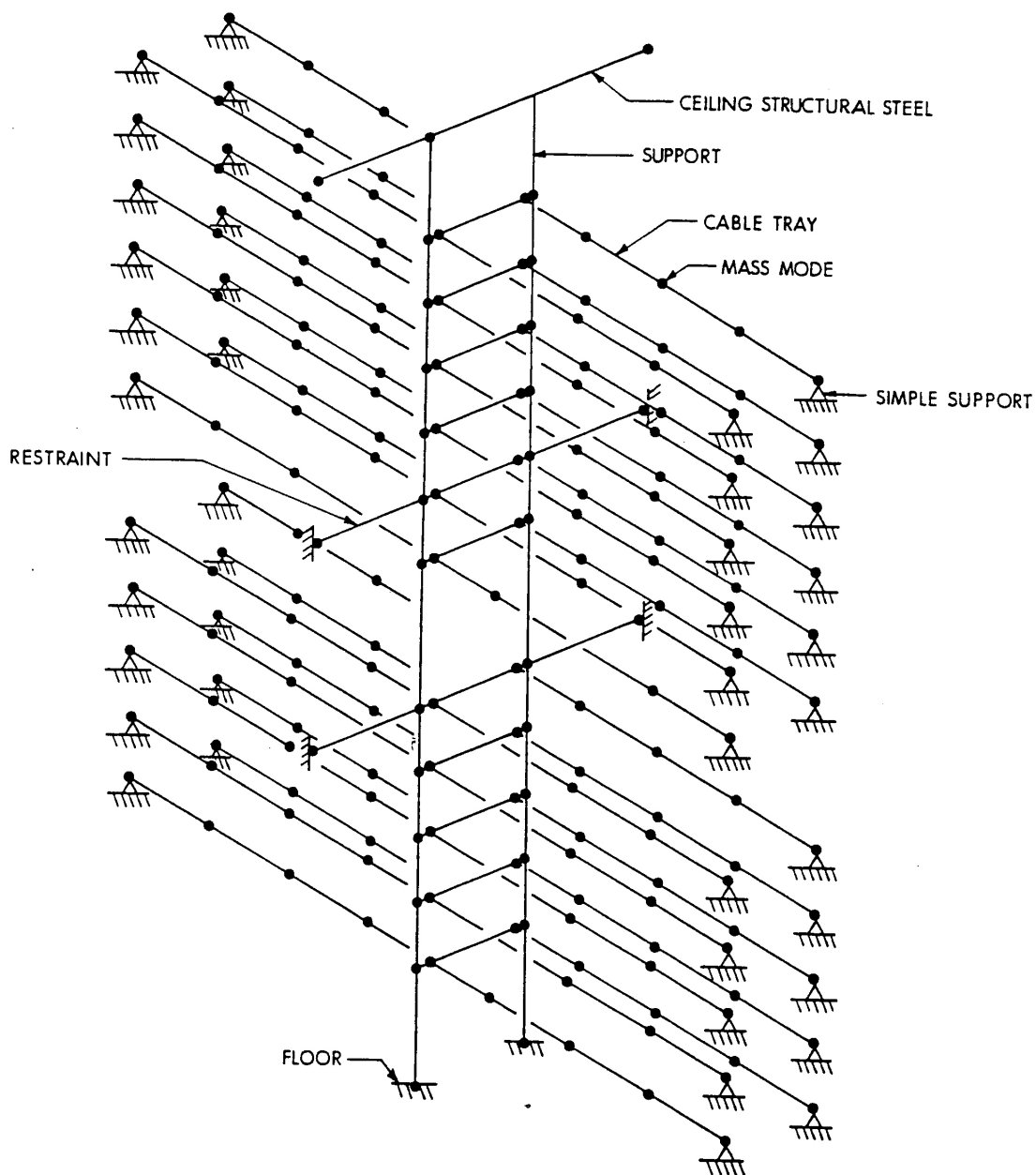


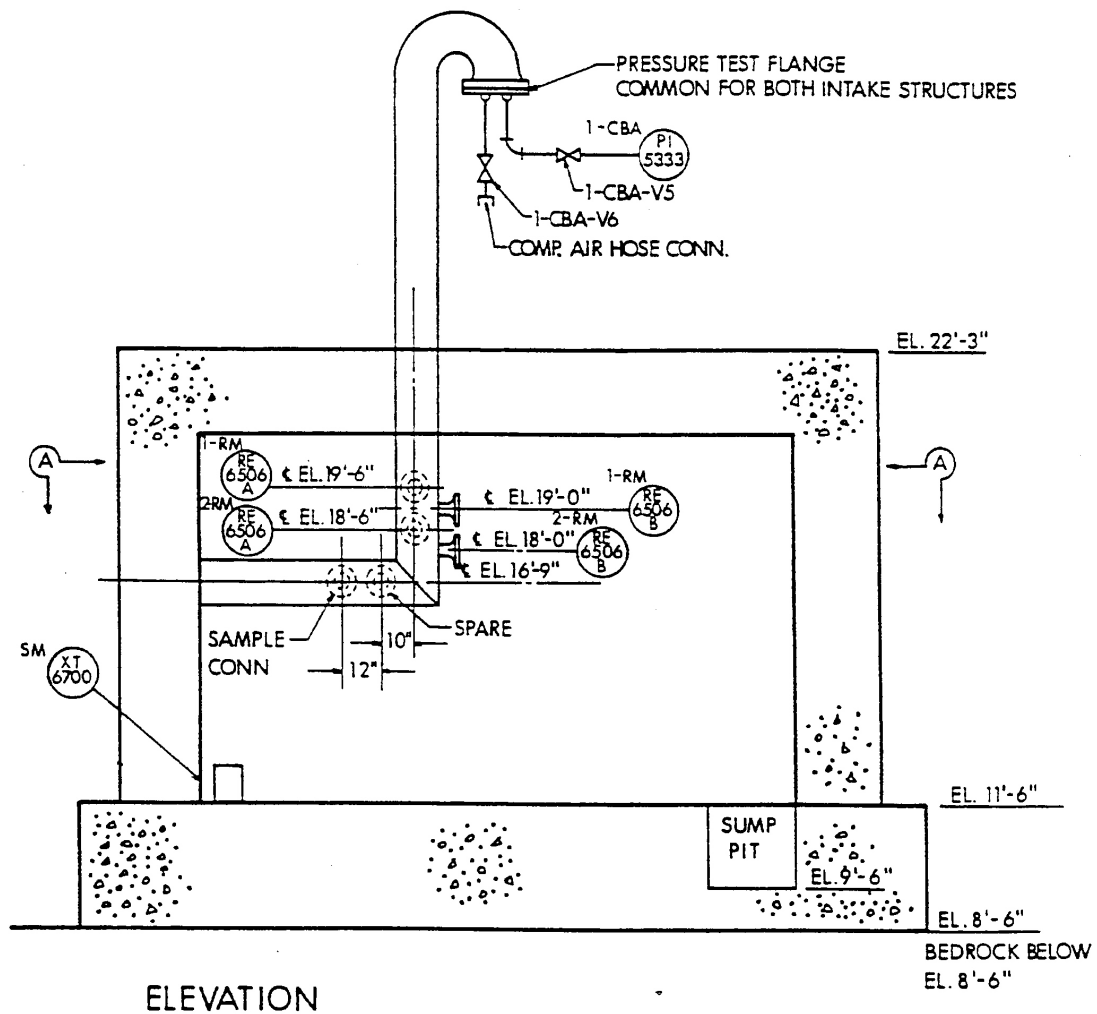






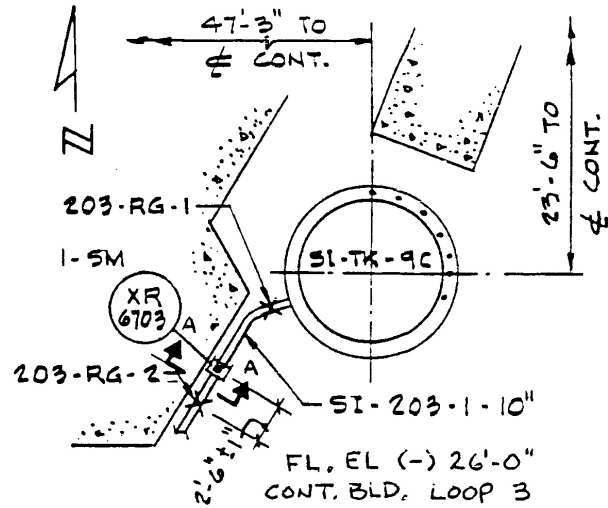
SEABROOK STATION UPDATED FINAL SAFETY ANALYSIS REPORT	Typical Ceiling-to-Floor Supported Cable Tray System	
		Figure 3.7(B)-30





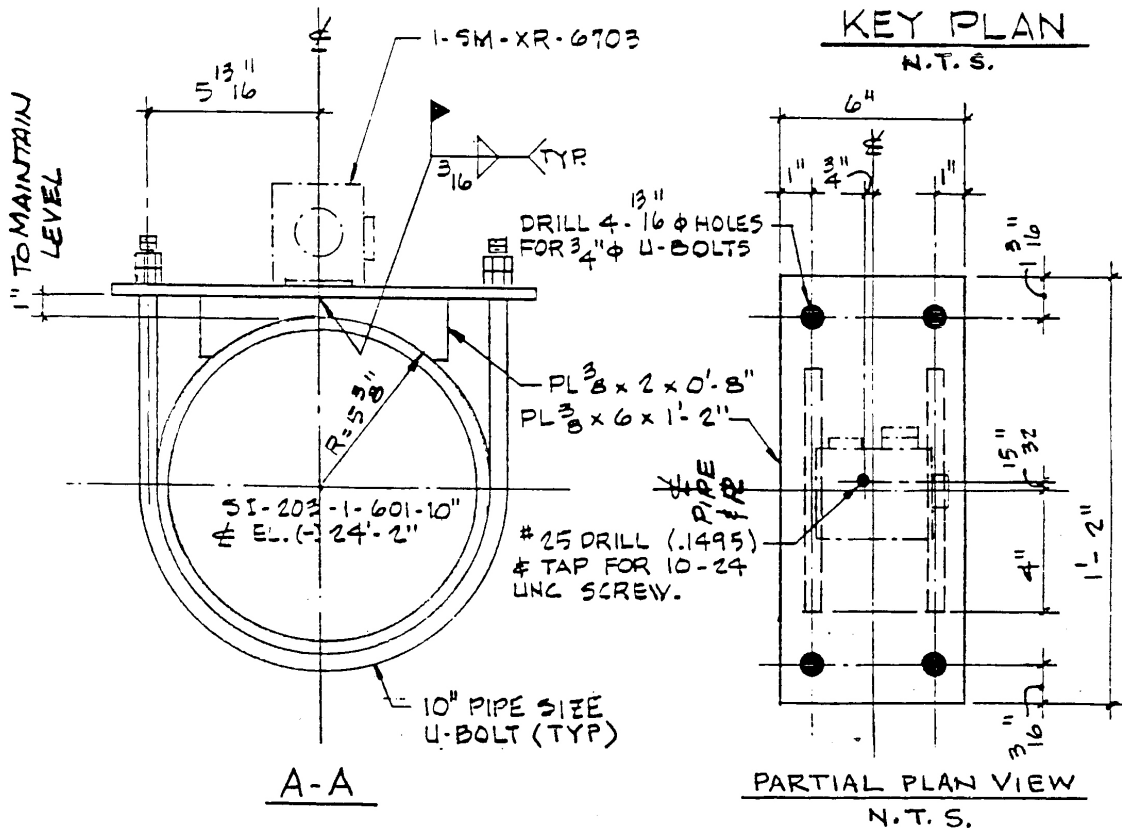
# NOTES

1. TORQUE THE INST. MOUNTING SCREW TO  $40 \pm 10$  IN-LBS
2. TORQUE U-BOLTS TO 80 FT-LBS  $\pm 20$
3. LEVEL MOUNTING PLATE WITHIN  $1/4"$  ( $1/64"$  IN  $3/2"$ ).
4. EDGE OF MOUNTING PLATE TO BE PARALLEL WITH  $\phi$  OF PIPE.
5. ALIGN LONG SIDE OF INSTRUMENT PARALLEL WITH THE EDGE OF MOUNTING PLATE WITHIN  $3"$  ( $1/4"$  IN  $5"$ ).



## KEY PLAN

N.T.S.

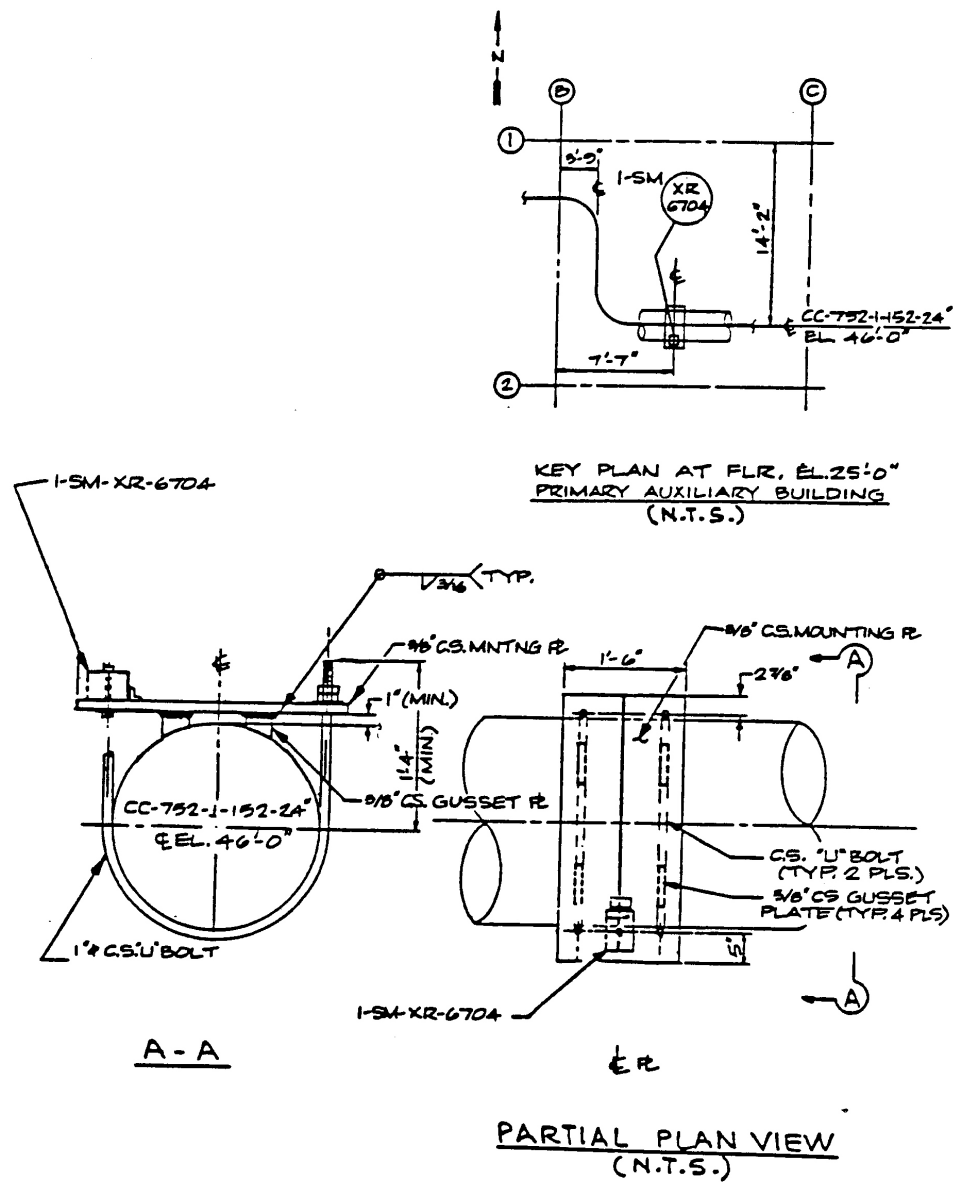


## MOUNTING DETAIL

SEABROOK STATION  
UPDATED FINAL SAFETY  
ANALYSIS REPORT

Mounting Detail of Triaxial Peak Accelerograph, XR-6703,  
on Safety Injection Piping (Line 203)

Figure 3.7(B)-33

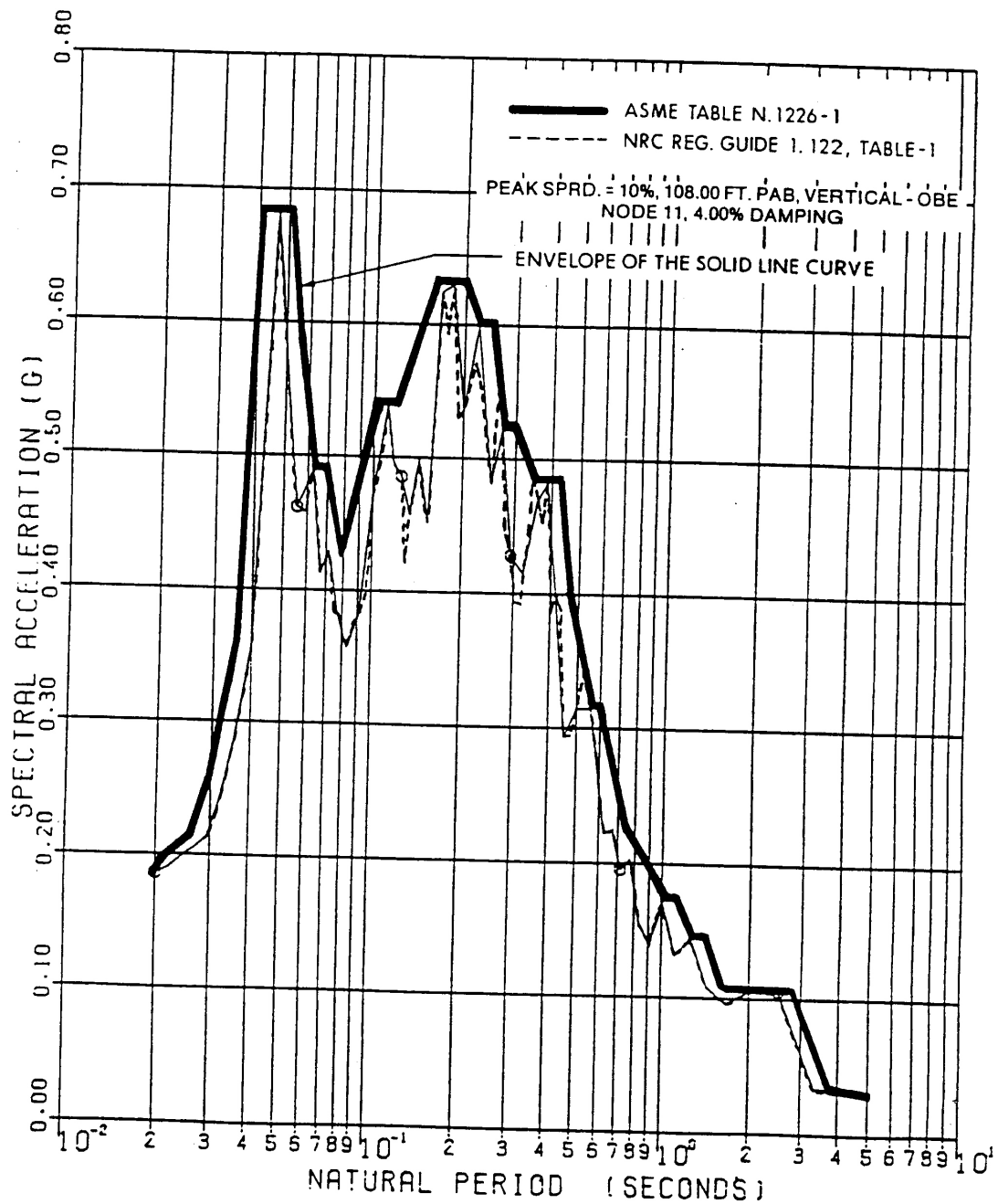


### MOUNTING DETAIL

SEABROOK STATION  
UPDATED FINAL SAFETY  
ANALYSIS REPORT

Mounting Detail of Triaxial Peak Accelerograph, XR-6704,  
on PCCW Piping

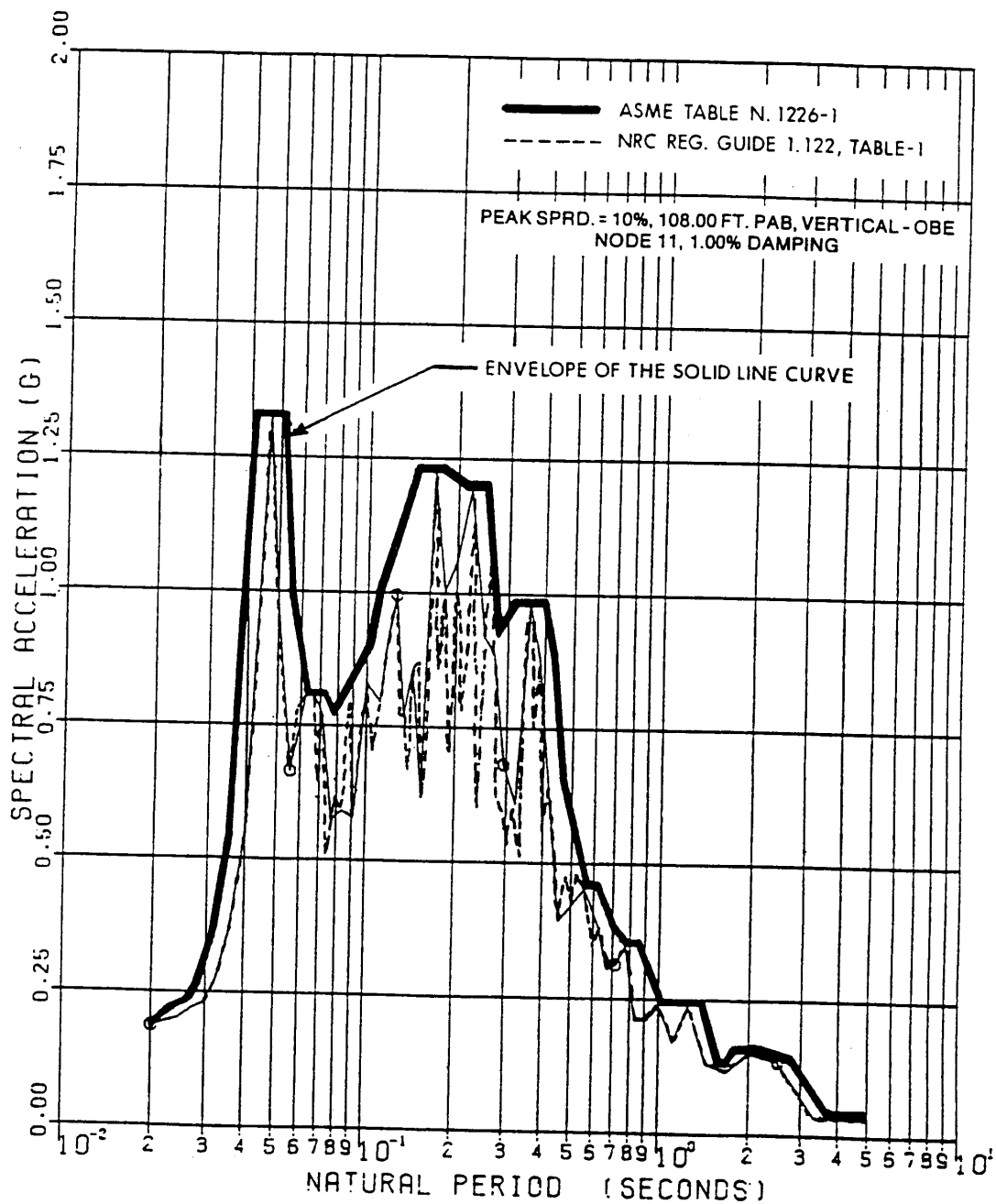
Figure 3.7(B)-34



SEABROOK STATION  
 UPDATED FINAL SAFETY  
 ANALYSIS REPORT

Primary Auxiliary Building Amplified Response Spectra  
 (Vertical) OBE, 4% Damping

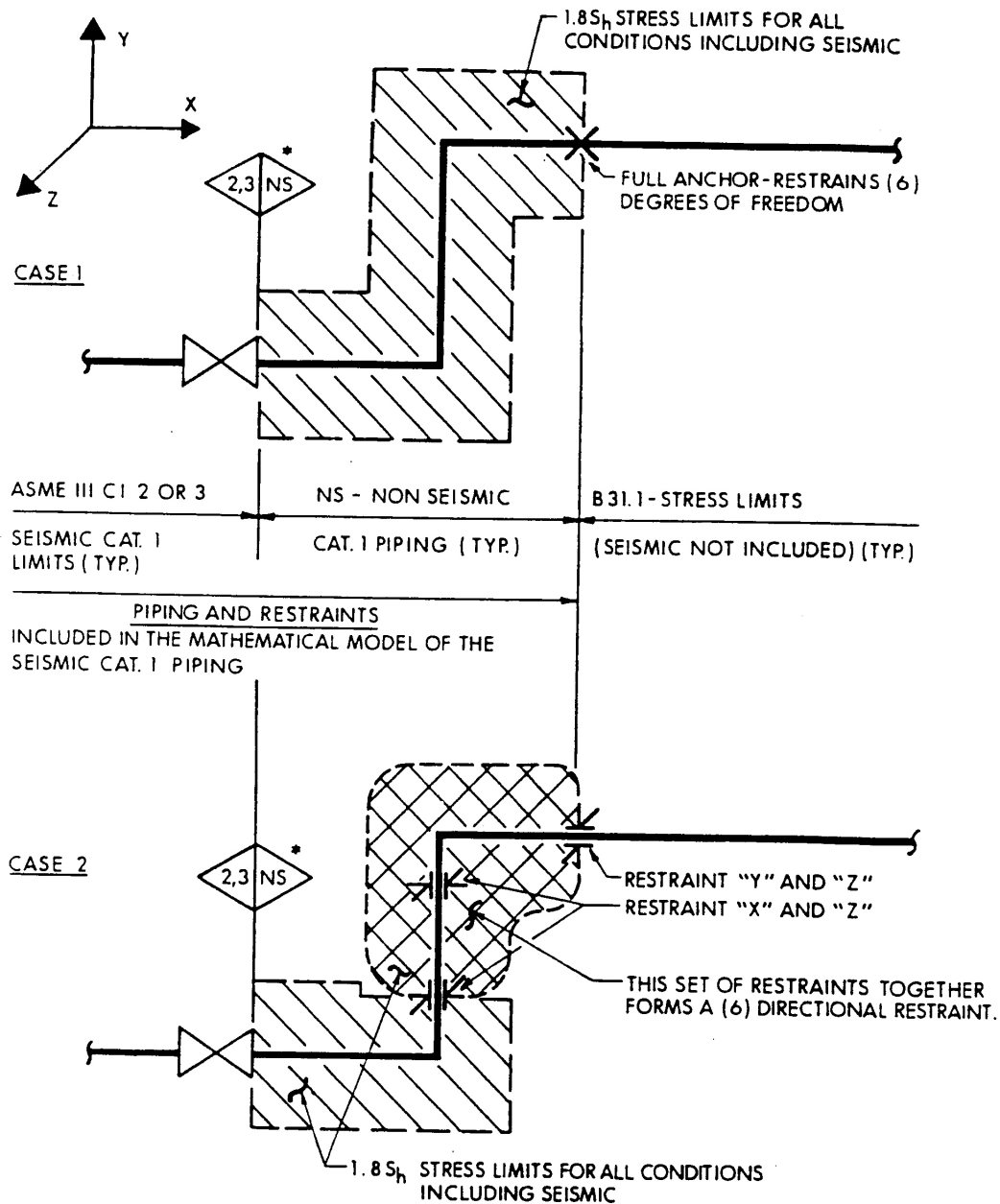
Figure 3.7(B)-35



SEABROOK STATION  
UPDATED FINAL SAFETY  
ANALYSIS REPORT

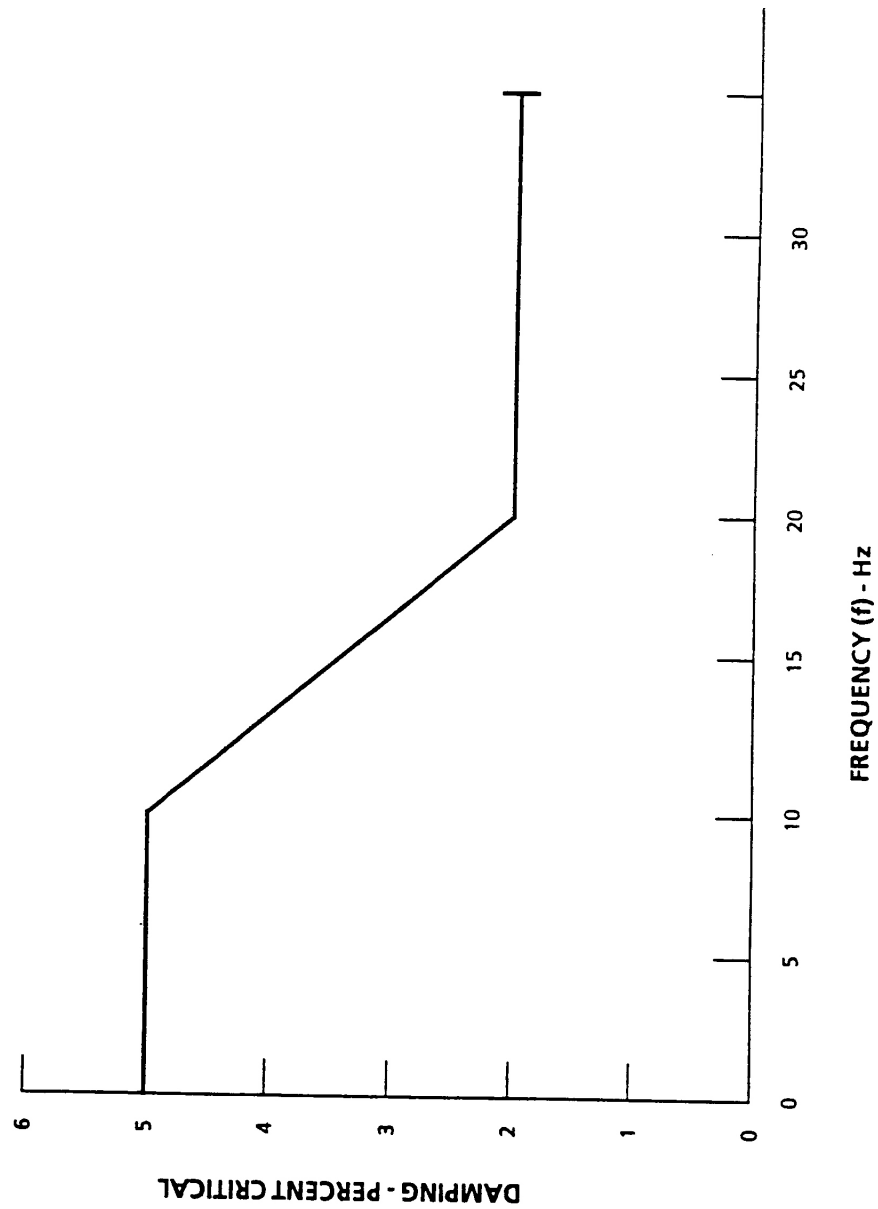
Primary Auxiliary Building Amplified Response Spectra  
(Vertical) OBE, 1% Damping

Figure 3.7(B)-36

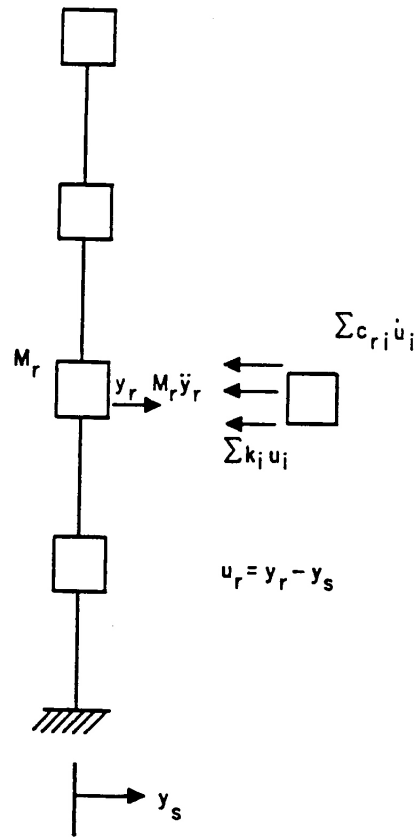


\* SYMBOL INDICATES BOUNDARY BETWEEN ASME III CLASS 2 OR 3 AND NON-SEISMIC PIPING.

SEABROOK STATION UPDATED FINAL SAFETY ANALYSIS REPORT	Typical Pipe Support Systems	
		Figure 3.7(B)-37



SEABROOK STATION UPDATED FINAL SAFETY ANALYSIS REPORT	Alternative to Regulatory Guide 1.61 Damping Values	
		Figure 3.7(B)-38



SEABROOK STATION UPDATED FINAL SAFETY ANALYSIS REPORT	Multi-Degree of Freedom System	
		Figure 3.7(N)-1