

This document was prepared in conjunction with work accomplished under Contract No. DE-AC09-96SR18500 with the U. S. Department of Energy.

DISCLAIMER

This report was prepared as an account of work sponsored by an agency of the United States Government. Neither the United States Government nor any agency thereof, nor any of their employees, makes any warranty, express or implied, or assumes any legal liability or responsibility for the accuracy, completeness, or usefulness of any information, apparatus, product or process disclosed, or represents that its use would not infringe privately owned rights. Reference herein to any specific commercial product, process or service by trade name, trademark, manufacturer, or otherwise does not necessarily constitute or imply its endorsement, recommendation, or favoring by the United States Government or any agency thereof. The views and opinions of authors expressed herein do not necessarily state or reflect those of the United States Government or any agency thereof.

This report has been reproduced directly from the best available copy.

Available for sale to the public, in paper, from: U.S. Department of Commerce, National Technical Information Service, 5285 Port Royal Road, Springfield, VA 22161,
phone: (800) 553-6847,
fax: (703) 605-6900
email: orders@ntis.fedworld.gov
online ordering: <http://www.ntis.gov/help/index.asp>

Available electronically at <http://www.osti.gov/bridge>
Available for a processing fee to U.S. Department of Energy and its contractors, in paper, from: U.S. Department of Energy, Office of Scientific and Technical Information, P.O. Box 62, Oak Ridge, TN 37831-0062,
phone: (865)576-8401,
fax: (865)576-5728
email: reports@adonis.osti.gov

Key Words: Plutonium, oxidation state, pH, soil, sediment

Retention: Permanent

Plutonium Oxidation State Geochemistry in the SRS Subsurface Environment (U)

**Brian A. Powell^(a), Robert A. Fjeld^(a), and John T. Coates^(a),
Daniel I. Kaplan^(b), and Steve M. Serkiz^(b)**

^(a) Clemson University

^(b) Westinghouse Savannah River Company

December 27, 2002



**Westinghouse Savannah River Company, LLC
Savannah River Site
Aiken, SC 29808**



Prepared for the U.S. Department of Energy under Contract No. DE-AC09-96SR18500

DISCLAIMER

This report was prepared for the United States Department of Energy under Contract No. DE-AC09-96SR18500 and is an account of work performed under that contract. Reference herein to any specific commercial product, process, or does not necessarily constitute or imply endorsement, recommendation, or favoring of same by Westinghouse Savannah River Company or by the United States Government or any agency thereof. The views and opinions of the authors expressed herein do not necessarily state or reflect those of the United States Government or any agency thereof.

Printed in the United States of America

**Prepared For
U.S. Department of Energy**

Cover photo: Trench disposal of B-12 boxes in the E-Area Low-Level Waste Facility on the Savannah River Site, Aiken, SC.

Key Words: Plutonium, oxidation state, pH, soil, sediment

Retention: Permanent

Plutonium Oxidation State Geochemistry in the SRS Subsurface Environment (U)

**Brian A. Powell^(a), Robert A. Fjeld^(a), and John T. Coates^(a),
Daniel I. Kaplan^(b), and Steve M. Serkiz^(b)**

^(a) Clemson University

^(b) Westinghouse Savannah River Company

December 27, 2002

**Westinghouse Savannah River Company, LLC
Savannah River Site
Aiken, SC 29808**



Prepared for the U.S. Department of Energy under Contract No. DE-AC09-96SR18500

REVIEWS AND APPROVALS

Gary M. Iverson 2-3-03
G. M. Iverson, SCUREF, Savannah River Technology Center Date

Christin A Langton 2-3-03
C. A. Langton, Savannah River Technology Center Date

L. N. Oji 2/6/03
L. N. Oji, Savannah River Technology Center Date

Fernando Fondeur 2.6.2003
F. Fondeur, Savannah River Technology Center Date

B. T. Butcher 2-5-03
B. T. Butcher, Level 4 Manager, SRTC Date

M. G. Looper 2-5-03
M. G. Looper, Solid Waste Division Date

A. D. Cozzi 2/6/03
A. D. Cozzi, Design Review Date

TABLE OF CONTENTS

| | |
|--|-----------|
| 1.0 Executive Summary | 8 |
| 2.0 Introduction | 9 |
| 2.1 Plutonium Geochemistry | 10 |
| 2.1.1 Redox Chemistry | 10 |
| 2.1.2 Complexation and Hydrolysis..... | 11 |
| 2.1.3 Solubility | 14 |
| 2.2 Plutonium Sorption to Natural and Synthetic Material | 14 |
| 2.2.1 Pu Interactions with Goethite (α -FeOOH) | 14 |
| 2.2.2 Pu Interactions with Manganese Oxides..... | 15 |
| 2.2.3 Previous Work with Pu(V) and SRS Burial Ground Sediment..... | 15 |
| 2.3 Objectives | 16 |
| 3.0 Methods and Materials | 17 |
| 3.1 Column Experiments | 17 |
| 3.1.1 Analyses..... | 17 |
| 3.1.2 Spike Preparation..... | 17 |
| 3.1.3 Column Experiment Protocol | 18 |
| 3.2 Sorption Edge Experiments | 19 |
| 4.0 Results and Discussion | 21 |
| 4.1 Column Experiments | 21 |
| 4.1.1 Pu(V) Column Analysis | 21 |
| 4.1.2 Pu(IV) Column Analysis..... | 30 |
| 4.2 Sorption Edge Experiments | 31 |
| 4.2.1 Subsurface Sandy Sediment | 31 |
| 4.2.2 Subsurface Clayey Sediment..... | 32 |
| 4.2.3 Surface Sandy Sediment | 32 |
| 4.2.4 Surface Clayey Sediment..... | 34 |
| 4.2.5 Calculation of Kd from Sorption Edge Experiments..... | 34 |
| 5.0 Summary | 35 |
| 6.0 References | 37 |
| 7.0 Appendix A: Iron and Organic Carbon Measurements of Sorption Edge Blank Samples | 40 |
| 8.0 Appendix B: Apparent Kd Calculations from sorption Edge Samples | 45 |

LIST OF TABLES

| | |
|--|----|
| Table 1. Standard reduction potentials (volts) of plutonium at pH 0 and 14 (Choppin, 1983; Allard et al., 1980)..... | 10 |
| Table 2. SRS sediments used in study. | 16 |
| Table 3. Physical properties of packed columns..... | 17 |
| Table 4. ^3H and ^{239}Pu retardation and recovery in pH 3 and pH 5 columns..... | 22 |
| Table 5. Plutonium oxidation state analysis results for plutonium column experiments. | 25 |
| Table 6. Filtration analysis of Pu(V) column experiments. | 28 |
| Table 7. Aqueous, acid soluble, and immobile plutonium fractions in pH 3 and pH 5 columns. 28 | |
| Table 8. Apparent Kd range for sorption edge sediments. | 35 |

LIST OF FIGURES

Figure 1. Eh-pH diagram of the plutonium-carbonate system at 25°C and 1 bar pressure. Dashed lines indicate the stability field of PuO₂(s) Langmuir 1997..... 12

Figure 2. Free ion activity diagram for plutonium oxidation states (Geochemist Workbench LLNL Thermodynamic Constant Database; Delany et al., 1990)..... 13

Figure 3. Pu(IV) hydrolysis versus pH (Geochemist Workbench LLNL Thermodynamic Constant Database; Delany et al., 1990). 13

Figure 4. ³H aqueous phase activity profile for pH 3 column experiments (C = concentration, C_o = initial concentration; DPV = displaced pore volumes; Rf = retardation factor). 21

Figure 5. ³H aqueous phase activity profile for pH 5 column experiments (C = concentration, C_o = initial concentration; DPV = displaced pore volumes; Rf = retardation factor). 22

Figure 6. Aqueous phase pH profile for plutonium column experiments (DPV = displaced pore volumes; 3A = pH 3 replicate A, 3B = pH 3 replicate B, 5A = pH 5 replicate A, and 5B = pH 5 replicated B). 23

Figure 7. Effluent plutonium activity profile, Pu(V) pH 3 spike column experiments (C = concentration, C_o = initial concentration; DPV = displaced pore volumes; Rf = retardation factor; BFG = background). 26

Figure 8. Effluent plutonium activity profile, Pu(V) pH 5 spike column experiments (C = concentration, C_o = initial concentration; DPV = displaced pore volumes; Rf = retardation factor; BFG = background). 27

Figure 9. Acid-soluble Pu in sediment as a function of distance in the pH 3 column experiments. 29

Figure 10. Acid-soluble Pu in sediment as a function of distance in the pH 5 column experiments. 29

Figure 11. Schematic representation of hypothesis for Pu(IV) source in solid phase activity profiles..... 30

Figure 12. Acid-soluble Pu in sediment as a function of distance in the pH3 Pu(IV) column experiments. Note: Percentages are percent acid-soluble activity. 31

Figure 13. Pu(IV) and Pu(V) sorption edge at 24 hr or 33 days on: (A) subsurface sandy sediment, (B) subsurface clayey sediment, (C) surface sandy sediment, and (D) surface clayey sediment. 33

Figure 14. Pu(V) sorption edge on surface sandy sediment at 6 days. 34

LIST OF APPENDIX TABLES

Table B. 1. Apparent Kd values from plutonium sorption edge experiments. 46
 Table B. 2. Apparent Kd values from plutonium sorption edge experiments 47
 Table B. 3. Apparent Kd values from plutonium sorption edge experiments 48
 Table B. 4. Apparent Kd values from plutonium sorption edge experiments 49

LIST OF APPENDIX FIGURES

Figure A. 1. TOC versus pH for sorption edge blank samples, subsurface sandy..... 41
 Figure A. 2. TOC versus pH for sorption edge blank samples, subsurface clayey. 41
 Figure A. 3. TOC versus pH for sorption edge blank samples, surface sandy. 42
 Figure A. 4. TOC versus pH for sorption edge blank samples, surface clayey. 42
 Figure A. 5. Iron determination in sorption edge blanks, subsurface sandy..... 43
 Figure A. 6. Iron determination in sorption edge blanks, subsurface clayey..... 43
 Figure A. 7. Iron determination in sorption edge blanks, Surface Sandy Sediment..... 44
 Figure A. 8. Iron determination in sorption edge blanks, Surface Clayey Sediment. 44

1.0 EXECUTIVE SUMMARY

The environmental mobility of plutonium (Pu) is profoundly influenced by its oxidation state. Pu(IV) is 2 to 3 orders of magnitude slower moving than Pu(V) or Pu(VI). For performance and risk assessment calculations, Pu waste has been assumed to exist in the less mobile reduced form, Pu(IV). Recent work on the chemistry of PuO₂ by Haschke and others (2000) has shown that PuO₂ may not be as thermodynamically stable as had previously been understood. Rather, some of the PuO₂ surface is oxidized in the presence of water, forming as much as 27% Pu(VI). This has significant implications to existing SRS programs (including the Pu Immobilization, LLW Disposal, and Remediation of the Old Burial Ground) and future SRS programs (including MOX and pit disassembly). Aspects of these implications are captured in the SRS Technology Needs/Opportunity Statement SR00-1026, "Reduce the Conservatism and Technical Uncertainty Associated with the Use of Literature Coefficients (K_d) to Describe Radionuclide Sorption to Sediments in PA Modeling."

The hypothesis of this Strategic Research and Development study was that even if Pu(VI) is produced in the waste form as suggested by Haschke and others (2000), it will be quickly reduced to Pu(IV) in the SRS subsurface environment. The overall objective of the research was to test this hypothesis through laboratory and computational studies conducted by Savannah River Technology Center and Clemson University scientist.

Dynamic flow experiments indicated that Pu(V) was very mobile in SRS sediments. As the pH increased, the degree of mobility and the fraction of Pu that became "irreversibly sorbed" to the sediment increased, albeit, only slightly. Conversely, these column experiments showed that Pu(IV) was essentially immobile and was largely "irreversibly sorbed" to the sediment. More than 100 batch sorption experiments were conducted with four end-member sediments, i.e., sediments that include the likely extreme chemical, textural, and mineralogical properties likely to exist in the SRS that will likely have an influence on Pu sorption. These tests were conducted as a function of Pu oxidation state, pH, and contact time. These results repeatedly showed that although Pu(V) sorbed initially quite weakly to sediments, it slowly, over the course of only 33 days, sorbed very strongly to sediments, to nearly the same degree as Pu(IV). This indirectly confirms our hypothesis that Pu(V) may in fact convert to the more strongly sorbing form of Pu, Pu(IV). This finding has very large implications for how SRS deals with the potential risk imposed by Pu entering our subsurface environment. It strongly suggests that once Pu enters our subsurface environment, even if it enters in the more mobile oxidized form proposed by Haschke and others (2000), it will likely have very low mobility, minimizing risk associated with long distance subsurface aqueous phase transport.

2.0 INTRODUCTION

The mobility of plutonium has significant implications for several existing (Pu Immobilization, LLW Disposal, and Remediation of the Old Burial Ground) and future (MOX and pit disassembly) programs at the Savannah River Site (SRS). The mobility of plutonium is highly dependant on oxidation state. Aqueous tetravalent plutonium, Pu(IV), exhibits a mobility 2 or 3 orders of magnitude lower than Pu(V) or Pu(VI). Reported K_d values (distribution coefficient, plutonium soil to water concentration ratio) for various plutonium oxidation states range from 10 to 10,000 mL/g (Prout, 1959). Transport models for the SRS subsurface assume that plutonium is stable as Pu(IV)O₂, which is a very insoluble crystalline material ($pK_{sp} \cong -56$) (Neck and Kim, 2001), exhibiting extremely low mobility.

However, research by Haschke et al. (2001, 2002) at Los Alamos National Laboratory indicated that up to 27% of the Pu on the surface of a PuO₂ solid was present in an oxidized form in the presence of water. X-Ray Photoelectron Spectroscopy (XPS) analyses indicated the plutonium was present as Pu(VI) (Haschke et al., 2001) and Extended X-Ray Absorption Fine Structure (EXAFS) spectroscopy analyses indicated that plutonium was present as Pu(V) (Haschke et al., 2002). It is possible that these observed variations are due to instrumental techniques (i.e., XPS is preformed under vacuum resulting in a lack of oxygen). In either case, the presence of oxidized forms of plutonium in plutonium solids raises questions concerning the assumption that plutonium in SRS sediments is present only as the low mobility, tetravalent form. Further analysis of the transport of plutonium in various oxidation states is therefore necessary.

Plutonium transport was found not to exhibit classical behavior in SRS sediment, even under relatively simple conditions (low carbonate aqueous phase with no potential ligands) (Serkiz et al., 2003). Experiments were preformed with a 250-420 μm fraction of SRS plutonium burial ground sediment. Plutonium fractions of different mobilities were observed at all pH values studied (3, 5, and 8). There typically were high, medium, and low mobility fractions in the column effluent. These data indicated that the plutonium in the column effluent after a Pu(V) spike remained as Pu(V). However, Pu(V) recovery decreased with increasing pH. This indicated that some Pu(V) was being retained, possibly irreversibly, on the column at higher pH values.

The conceptual model developed by Serkiz et al. (2003) and Fjeld et al. (2003) indicates that any plutonium that is oxidized within the SRS subsurface will be rapidly reduced to Pu(IV), therefore confirming the risk assessment assumptions already made. The conceptual model consists of three reactions:

- a.) equilibrium partitioning of Pu(V) between the solid and aqueous phase,
- b.) surface mediated reduction of Pu(V) to Pu(IV), and
- c.) equilibrium partitioning of Pu(IV) between the solid and aqueous phase.

For this conceptual model, parameters reflecting the mobilities of both Pu(V) and Pu(IV) in SRS sediment are necessary for accurate modeling.

2.1 PLUTONIUM GEOCHEMISTRY

Interpretation of data pertaining to plutonium geochemistry is subject to a number of constraints due to the complex chemistry involved. The dominant reactions governing the fate and mobility of plutonium in the environment are oxidation/reduction, precipitation/solubility, complexation/hydrolysis and sorption/desorption. All of these possible reactions must be considered when attempting to define interactions between plutonium and natural materials.

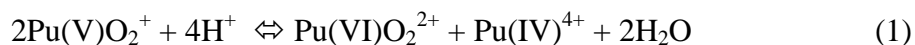
2.1.1 Redox Chemistry

The chemical behavior of plutonium and other transuranic species in the environment is primarily defined by oxidation state. Due to variations of the chemical properties for each oxidation state, the reactions within the conceptual model must be considered with respect to each oxidation state. Plutonium is able to exist in five different oxidation states as the oxy/hydroxy ions Pu(III)³⁺, Pu(IV)⁴⁺, Pu(V)O₂⁺, Pu(VI)O₂²⁺, and Pu(VII)O₄⁻¹ (Cleveland, 1979). PuO₄⁻ is not considered a stable species in the natural environment. In moderate pH or oxic groundwater, Pu(III) is readily oxidized to Pu(IV) (Choppin, 1997). For example, Pu³⁺ is rapidly oxidized by water at near neutral pH levels (Farr, 2000). This is due to the negative potential of Pu(III) at higher pH's. The standard reduction potentials for pH 0 and pH 14 are shown in Table 1. Therefore, the primary oxidation states of relevance in natural environments are Pu(IV), Pu(V), and Pu(VI).

Table 1. Standard reduction potentials (volts) of plutonium at pH 0 and 14 (Choppin, 1983; Allard et al., 1980)

| Couple | pH = 0 | pH = 14 |
|----------------|--------|--------------|
| Pu(III)/Pu(IV) | +0.982 | -1.04 ± 0.24 |
| Pu(IV)/Pu(V) | +0.170 | +0.52 ± 0.24 |
| Pu(V)/Pu(VI) | +0.916 | +0.16 ± 0.24 |
| Pu(IV)/Pu(VI) | +1.043 | +0.34 ± 0.12 |

Oxidation state can also be influenced by disproportionation reactions where a single species serves as both the oxidizing and reducing agent. For example, a solution containing Pu(V) at a high enough concentration can disproportionate into Pu(IV) and Pu(VI). These concentrations are typically not encountered in natural systems (Choppin 1997). The extent of disproportionation reactions (equation 1) is also less likely in acidic solutions.



This is due to the fourth power dependence on the hydrogen ion concentration (Equation 2).

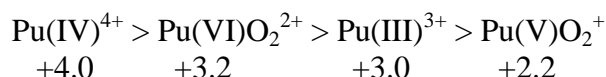
$$K = \frac{[\text{Pu(VI)}][\text{Pu(IV)}]}{[\text{Pu(V)}]^2[\text{H}^+]^4} \quad (2)$$

There is also a dependence on the square of the Pu(V)O_2^+ concentration, which is the reason higher concentrations ($10^{-6} M$) of Pu(V) are required for disproportionation reactions to occur in significant amounts.

Radiolysis of water can generate redox reagent, such as H_2 , O_2 and H_2O_2 , as well as short lived H, OH, and O radicals. These agents can react directly with plutonium or react with the sorbing phase in a system (Hobart, 1990). Reactions with the sorbing phase could be such that the oxidation state of plutonium is affected (Hobart, 1990).

2.1.2 Complexation and Hydrolysis

Complexation with available ligands can have a significant impact on the sorption of plutonium to surfaces by affecting the species charge and free energy of the molecule. The general affinity for complexation decreases with decreasing effective charge for each oxidation state in the following order (Choppin, 1983; Kim, 1986):



where the effective charge is noted below each species (Choppin, 1983). The greater effective charge of PuO_2^{2+} compared to Pu^{3+} is due to the exposure of the equatorial side of the linear O-Pu-O²⁺ molecule (Kim, 1986). The general trend in the strength of the complexed species for actinides and various groundwater ligands is (Silva and Nitsche, 1995):



Hydrolysis dominates most complexation reactions for plutonium (further discussed below). Figure 1 shows an Eh-pH diagram for plutonium in $3.6 \times 10^{-3} M \text{HCO}_3^-$. The modeling was performed using Geochemist Workbench® with the Lawrence Livermore National Laboratory's thermodynamic database (Delany and Lundeen, 1990). Carbonate dominates the speciation for Pu(VI) at pH values greater than about two and Eh greater than 0.5eV. Trivalent and pentavalent plutonium are primarily present as free ions. Pu(OH)_4 is dominant Pu(IV) species.

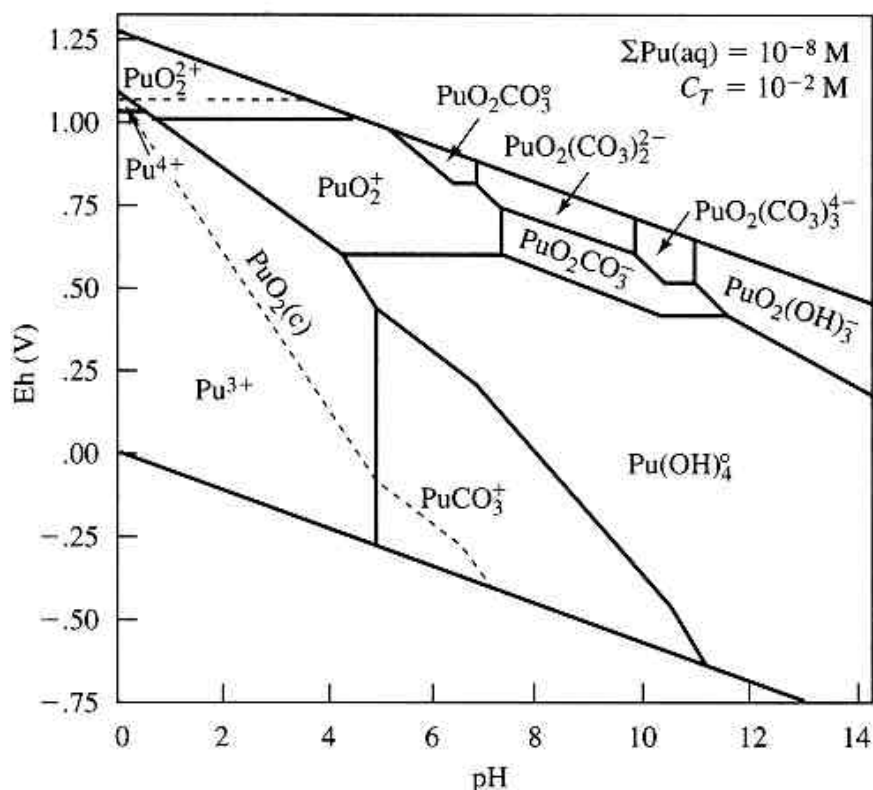


Figure 1. Eh-pH diagram of the plutonium-carbonate system at 25°C and 1 bar pressure. Dashed lines indicate the stability field of $\text{PuO}_2(\text{s})$ Langmuir 1997.

The dominance of these hydrolysis reactions yields a very complex chemistry for plutonium even in simple solutions of varying pH and carbonate concentrations. The concentration of the free ion for each oxidation state is plotted as a function of pH for a 10^{-9} molar solution of plutonium Figure 2. Hydrolysis of the Pu^{4+} ion occurs even at very low pH values and there is very little Pu^{4+} present at a pH slightly greater than one. As the pH increases the hydrolysis of other oxidation states occurs as seen in Figure 2. The effective charge of $\text{Pu}(\text{VI})\text{O}_2^{2+}$ results in hydrolysis at a pH around 4. This is at a lower pH than $\text{Pu}(\text{III})$, which has a smaller effective charge as discussed above. Geochemist Workbench® was used to make the plots in Figure 2 employing the LLNL thermodynamic database (Delany and Lundeen, 1990) and the oxidation state was not allowed to change during the computation.

The extensive hydrolysis of $\text{Pu}(\text{IV})$ at low pH values continues until the neutral species $\text{Pu}(\text{OH})_4$ is formed (Figure 3) At a pH around 4.5, greater than 50% of the plutonium present is $\text{Pu}(\text{OH})_4$, which rises to greater than 99.99% around pH 7. Therefore, when performing experiments within natural pH ranges, hydrolysis reactions lead researchers to deal with $\text{Pu}(\text{OH})_2^{+2}$, $\text{Pu}(\text{OH})_3^{+}$, and $\text{Pu}(\text{OH})_4$ instead of the free Pu^{4+} ion. The formation of $\text{Pu}(\text{OH})_4$ also limits the solubility of $\text{Pu}(\text{IV})$ species. At $\text{Pu}(\text{IV})$ concentrations greater than 10^{-7} M, $\text{Pu}(\text{OH})_4(\text{s})$ precipitates as an amorphous hydroxide polymer that can be separated by ultra-filtration techniques. The amorphous polymer has been shown to form real or intrinsic colloids that

significantly affect its mobility (Nelson, 1987). These aggregates eventually lose a water molecule and form the PuO_2 crystalline solid that is considered to be the thermodynamically stable form of plutonium (Cleveland, 1979).

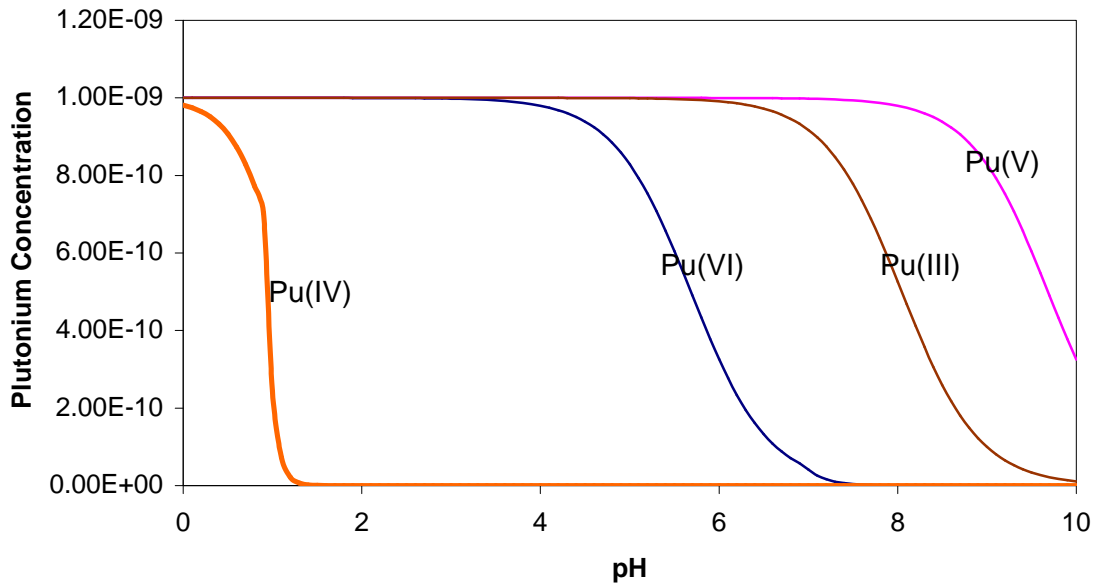


Figure 2. Free ion activity diagram for plutonium oxidation states (Geochemist Workbench LLNL Thermodynamic Constant Database; Delany et al., 1990).

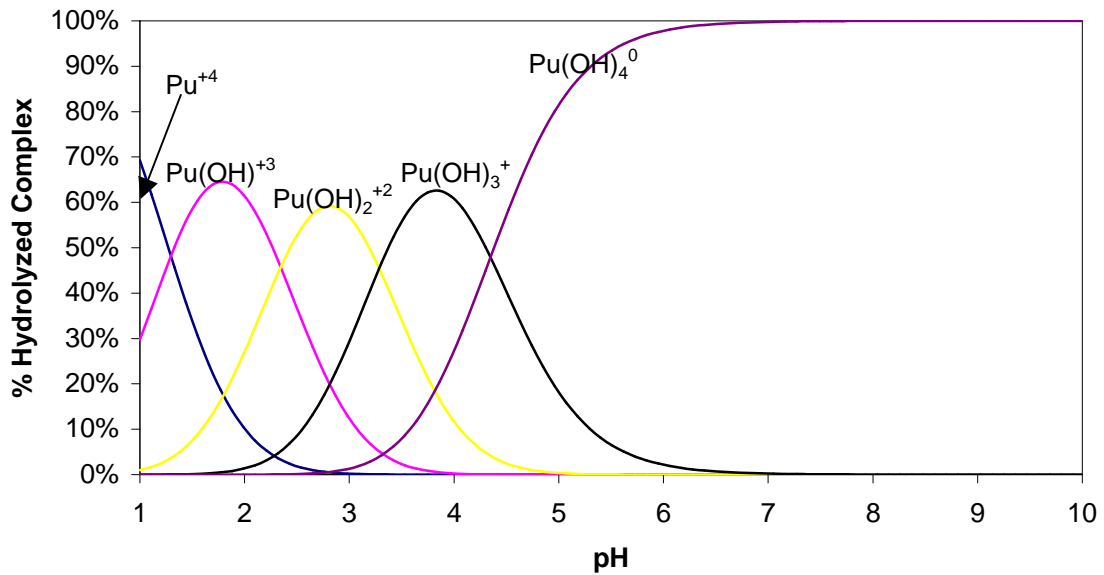


Figure 3. Pu(IV) hydrolysis versus pH (Geochemist Workbench LLNL Thermodynamic Constant Database; Delany et al., 1990).

2.1.3 Solubility

The aqueous phase concentration of plutonium is usually controlled by the presence of $\text{Pu}(\text{OH})_4(\text{s})$ or PuO_2 because of the extremely low solubility of these compounds. $\text{Pu}(\text{OH})_4(\text{s})$ has pK_{sp} of -56 in a solution at pH 8 with no complexants (Choppin, 1997). The reported pK_{sp} values for PuO_2 range from -54.8 to -57.4 (Neck and Kim, 2001). The similar solubilities stem from the fact that PuO_2 is produced from $\text{Pu}(\text{OH})_4(\text{s})$. At concentrations of plutonium high enough to cause homogenous precipitation of polymeric plutonium hydroxide or oxy-hydroxide species colloidal forms of plutonium are produced via aggregation of $\text{Pu}(\text{OH})_4(\text{s})$ or $\text{PuO}_2(\text{s})$ (Kim 1986). These colloidal forms of plutonium must be separated from the aqueous phase in order to differentiate between aqueous and solid plutonium phases. Approximately 66% of the plutonium polymer can be smaller than 100nm and 0.5% is less than 4.1nm (Nitsche and Edelstein, 1985; Nitsche et al., 1988). Without nano-scale separation methods, plutonium may appear to be more soluble while actually being present in a colloidal form. Some of the colloidal material can be present in aggregates greater than 4.1nm. Therefore, a working knowledge of the nature of colloidal material is needed to define the proper aqueous and solid phases. Kim (1986) reviewed a good example of this phenomenon. Calculations showed that theoretical estimations of PuO_2 solubility based upon the solubility product constant yielded concentrations of plutonium that were 5 orders of magnitude lower than experimental observations. This indicates that thermodynamic data cannot be used to describe plutonium solubility because the constants cannot account for colloid formation.

2.2 PLUTONIUM SORPTION TO NATURAL AND SYNTHETIC MATERIAL

Sanchez et al. (1985) and Keeney-Kennicutt and Morse (1985) studied the sorption of plutonium to natural and synthetic material. Although thermodynamic calculations indicate the $\text{Pu}(\text{V})$ is stable under most environmental conditions, interactions with various sorptive surfaces with different redox potentials complicate plutonium sorption characteristics by either oxidizing or reducing the sorbed species.

2.2.1 Pu Interactions with Goethite ($\alpha\text{-FeOOH}$)

Sanchez et al. (1985) performed sorption experiments with $\text{Pu}(\text{IV})$ and $\text{Pu}(\text{V})$ on goethite ($\alpha\text{-FeOOH}$). The pH edge (the point at which 50% sorption occurs) for $\text{Pu}(\text{IV})$ occurred between pH 3 and 5 and that for $\text{Pu}(\text{V})$ was between 5 and 7. However, the $\text{Pu}(\text{V})$ edge shifted to a lower pH with time and began to resemble $\text{Pu}(\text{IV})$. One explanation for this shift in the sorption edge is that $\text{Pu}(\text{V})$ was being reduced to $\text{Pu}(\text{IV})$. This reduction was indicated by an experimentally defined solvent extraction technique (Sanchez et al. 1985). Keeney-Kennicutt and Morse (1985) also studied $\text{Pu}(\text{V})$ sorption to goethite along with several other natural minerals. Their data suggested that goethite could reduce $\text{Pu}(\text{V})$ to $\text{Pu}(\text{IV})$. It was also postulated that the reduction could be photochemically catalyzed (Keeney-Kennicutt and Morse, 1985).

The species distribution shown in Figure 2 and Figure 3 indicates that primarily cationic or neutral species of $\text{Pu}(\text{IV})$ and $\text{Pu}(\text{V})$ are present at the pH values used in these two studies.

Also, at the indicated pH levels the surface of goethite has a net positive charge. As sorption occurred in all studies, it must be inferred that a cationic plutonium species was interacting strongly with a surface containing a positive charge. This type of interaction is in contrast to electrostatic interaction models. Sorption of some cationic species could be the result of interactions with a permanent negative charge present from imperfections and substitutions to the goethite surface but it is not likely that this is the case for all sorption.

2.2.2 Pu Interactions with Manganese Oxides

Interactions of plutonium with manganese oxy/hydroxides are not well understood. The redox chemistry of plutonium varies with respect to the manganese mineral analyzed (Shaugnessy, 2000; Keeney-Kennicutt and Morse, 1985; Duff et al., 1999; Morgenstern and Choppin, 2002). There is an apparent relationship between the manganese oxidation state and its ability to reduce or oxidize plutonium. Minerals containing Mn(II) and Mn(III) oxidation states such as manganite ($\text{Mn(III)O}_2\text{H}$) and hausmannite ($\text{Mn(II/III)}_3\text{O}_4$) appear to reduce plutonium (Shaugnessy, 2000). Manganese(IV) minerals such as pyrolusite ($\beta\text{-Mn(IV)O}_2$) and birnessite ($\delta\text{-Mn(IV)O}_2$) appear to oxidize plutonium (Morgenstern and Choppin, 2002; Keeney-Kennicutt and Morse, 1985). Further work examining the influence of manganese on the speciation of plutonium is needed.

2.2.3 Previous Work with Pu(V) and SRS Burial Ground Sediment

Batch and column studies were performed by Serkiz et al. (2003) using Pu(V) in SRS Burial Ground sediment. The conceptual model described in the Introduction section includes the reduction of plutonium by iron oxides to explain experimentally observed data. The batch experiments from this study at pH 3, 5, and 8 showed an initial rapid decline in aqueous plutonium concentrations followed by a slower decline that did not reach equilibrium within 3 days. The degree of sorption increased with pH in accordance with pH dependence for the sorption of metal cations to metal oxide surfaces.

In column experiments conducted by Serkiz et al. (2003), both the fractional recovery and the elution time of the major peak, were dependant on pH. The recoveries at pH 3, 5, and 8 were 90%, 75% and 38%, respectively. Retardation factors were 1.4, 8.4, and 35 at pH 3, 5, and 8, respectively. The change in retardation factor was attributed to increased sorption of plutonium; as the pH increased the surfaces developed a large pH-dependant negative charge. The decrease in recovery with increasing pH was attributed to the reduction of Pu(V) to Pu(IV) within the column. In the conceptual model, this would occur because the longer retention times increased the contact time between Pu(V) and the reactive surfaces.

Oxidation state analysis showed that the column influent and effluent was predominantly Pu(V). However, there was a small shoulder that appeared after the main peak for the pH 3 column experiment, suggesting the existence of multiple plutonium species. It was proposed that this small peak could be Pu(IV) (produced either from reduction in the column or present in the spike). However, the sample volumes and concentrations were too small to allow determination of the oxidation state.

Fjeld et al. (2003) incorporated a reduction rate constant into a subsurface transport model for the data of Serkiz et al. (2003). The model fit provided rate constants of 2.0×10^{-4} , 3.0×10^{-5} , and $1.3 \times 10^{-5} \text{ s}^{-1}$ for pH 3, 5, and 8 respectively. These compared well with those of other researchers. The rate constants calculated from the data of Serkiz et al. (2003) ranged from 1.2×10^{-5} to $1.4 \times 10^{-5} \text{ s}^{-1}$ for the 3 pH values investigated and appeared to be independent of pH. Sanchez et al. (1985) calculated reduction rate constants that ranged from 2×10^{-4} to $2 \times 10^{-5} \text{ s}^{-1}$.

2.3 OBJECTIVES

To gain an understanding of the mobility of different forms of plutonium at the SRS Burial Ground, column and batch sorption edge experiments were conducted with Pu(V) and Pu(IV). All experiments were performed using 0.02M NaClO₄ solutions prepared with low-CO₂ distilled-deionized (DDI) water. Pu(V) was chosen in the experiments because it is the least likely Pu oxidation state to form complexes and because it is the predominant oxidation state in natural systems. Along with the non-complexing behavior of the ClO₄⁻ ion and lack of dissolved inorganic carbon, the chemical conditions should simplify the system so that the environment created will indicate only hydrolysis interactions and interactions between the plutonium and the solid phase. The sediments used in these experiments are described in Table 2. These sediments were selected to represent end-members with respect to sediment properties existing on the SRS that are likely to influence plutonium sorption.

Table 2. SRS sediments used in study.

| Name | ID | Description | Sand/Silt/Clay (wt-%) | Surface Area (m ² /g) | pH | Organic Matter (wt-%) |
|-------------------|------|---|-----------------------|----------------------------------|------|-----------------------|
| Subsurface Sandy | SubS | Subsurface Yellow Sandy Sediment Low Organic Matter | 97/2/1 | 1.27 | 5.10 | <0.01 |
| Subsurface Clayey | SubC | Subsurface Red Clayey Burial Ground Sediment Low Organic Matter | 58/30/12 | 15.31 | 4.55 | NA |
| Surface Sandy | SS | Surface Sandy Burial Ground Sediment Clay/Silt, Low Organic Matter | 93/6/1 | 1.37 | 4.70 | <0.01 |
| Surface Clayey | SC | Surface Clayey Forest Sediment High Organic Matter | 67/25/8 | 9.24 | 5.83 | 3.2 |

^(a) Sand/Silt/Clay was measured by the sieve and pipet method; surface area by the BET N₂ sorption method; pH by the 1:1 sediment:water method; and organic matter by the dry combustion method (Sparks 1996).

3.0 METHODS AND MATERIALS

3.1 COLUMN EXPERIMENTS

3.1.1 Analyses

The experiments were conducted with ^{239}Pu purchased from Isotope Products (Valencia, CA) as a $5\mu\text{Ci/mL}$ stock solution in $4M \text{HNO}_3$. Analyses of all ^{239}Pu solutions were performed on 1.0mL samples with an alpha-beta discriminating liquid scintillation counter (Wallac Inc., Model 1415). The column experimental apparatus consisted of reservoirs for the plutonium spike and influent solution, a polyvinylchloride column ($8.5\text{cm} \times 1.5\text{cm ID}$), a peristaltic pump (Masterflex, model 7720-60), and a fraction collector (Eldex Universal Fraction Collector) (Fjeld et al., 2000). Columns were incrementally packed with 2 to 3g aliquots of subsurface sandy sediment at a time and compacted by lightly tapping the base of the column on the desktop. The physical properties of each column are shown in Table 3. The influent solutions were low-carbonate $0.02M \text{NaClO}_4$ at pH 3 and pH 5 prepared as described in Serkiz et al. (2003). Perchlorate was chosen as the backing electrolyte because of its low complexation affinity for plutonium. The pH adjusted NaClO_4 solution was pumped through the column for 4 - 7 days to reach hydrodynamic equilibrium and to chemically condition the sediment before the plutonium spike was introduced. The weight of the column was monitored until a constant weight was achieved, indicating hydrodynamic equilibrium with all of the available pore spaces filled.

Table 3. Physical properties of packed columns

| Column | Pore Volume (mL) | Bulk Soil Density (g/cm^3) | Porosity |
|-------------|------------------|--|----------|
| pH 3 A | 4.36 | 1.62 | 0.17 |
| pH 3 B | 4.66 | 1.62 | 0.19 |
| pH 5 A | 4.97 | 1.62 | 0.19 |
| pH 5 B | 4.81 | 1.62 | 0.21 |
| Pu(IV) pH 3 | 5.02 | 1.62 | 0.20 |

Oxidation state analyses were performed using an extraction technique adapted from the thenoyltrifluoroacetone (TTA)/di(2-ethylhexyl)orthophosphoric acid (HDEHP) extraction technique discussed by Neu et al. (1994) as well as an ion chromatography (IC) technique (Coates et al., 2001). Two techniques were utilized because of the uncertainty inherent in each method. Oxidation state analyses were performed on a limited number of samples of the column effluents. As the effluent concentration of plutonium decreased, oxidation state analysis was not possible due to detection limits of the techniques.

3.1.2 Spike Preparation

Plutonium in the pentavalent oxidation state was prepared by the method of Satio et al. (1985) at concentrations from 229 to 309Bq/mL (4.17 to $5.62 \times 10^{-7} M$). A new spiking solution

was prepared for each column experiment. One column experiment was performed with Pu(IV) at pH 3 to determine the nature of Pu(IV) transport. The Pu(IV) samples were prepared by adding an aliquot of plutonium stock to a Teflon beaker, evaporating the sample to dryness and dissolving the dried residue in 1.0M HNO₃. This process was repeated twice and the final sample residue was dissolved in 0.02M NaClO₄ at pH 3. Oxidation state analysis was performed on all spike solutions.

The pH of the spike solution was adjusted with 0.1M HNO₃ and measured with an ORION pH Triode Electrode (Beverly, MA). The pH of the spike solution varied from the eluant solution in some columns. Replicate experiments were conducted for each pH (denoted as A and B). The pH was monitored with Broadley-James Microflow pH sensors (Irvine, CA). Tritium, a non-reactive tracer, was added to the spike solution to a final concentration of 7.6 - 17.6 Bq/mL. There was a slight contamination of ²⁴¹Pu in the plutonium spike that caused some interference with ³H counting due to the similar beta energy of the two nuclides. The contribution of ²⁴¹Pu was subtracted from the total beta counts observed to determine the ³H activity. This correction was only utilized for pH 3 columns where the effluent front of plutonium overlapped with the ³H tail.

3.1.3 Column Experiment Protocol

The influent was pumped upward through the column at a flow rate of 0.3mL/min. A ²³⁹Pu(V) spike was introduced as a finite step of approximately one pore volume. The total volume injected was measured by weighing the spike solution before and after the spike. The pH 3 columns were eluted with 70 to 100 pore volumes and the pH 5 columns were eluted with 232 to 250 pore volumes. After spiking, the first 20 to 30 pore volumes were collected in 3.5mL fractions. A 1.0-mL sample from each fraction was removed for liquid scintillation counting and the remainder was used for oxidation state analysis. In some cases the fractions from two adjacent samples were combined to have a sufficient volume for both oxidation state analysis techniques. Also, on selected fractions, samples were filtered through Microsep 30K Centrifugal Filters (estimated effective pore size = 12nm). In these cases 1.0mL was filtered and a 0.5mL aliquot of the filtrate was removed for analysis.

After effluent flow was stopped, the columns were immediately removed and divided into approximately 1cm segments. Each 1cm segment was weighed to determine the packing density of the wet sediment. The plutonium was extracted for 14 days in a solution containing 3.0mL 5M HNO₃ and 3.0mL 5M HCl. After extraction, a 1.0mL aliquot of each solution was centrifuged, filtered, and a 1.0mL sample was counted by liquid scintillation to determine the extractable activity associated with each segment.

For data analysis, the aqueous concentration in the column effluent were normalized to the spike concentration and plotted as a function of displaced pore volume (DPV). Retardation factors were calculated for both ³H and ²³⁹Pu using Equations 3 and 4 below (Clark, 1996).

$$\bar{t} = \frac{\int tC(t)dt}{\int C(t)dt} \quad (3)$$

where \bar{t} is mean residence time in the column. Equation 3 can be expressed in terms of aqueous volume (equation 4).

$$\bar{V} = \frac{\int VC(t)dV}{\int C(t)dV} - \frac{V_{spike}}{2} \quad (4)$$

In equation 4, V is the total volume passed through the column, C(t) is the concentration at time t, and T is the volume of the finite step spike. The retardation factor is calculated by dividing \bar{V} by the pore volume of the column.

3.2 SORPTION EDGE EXPERIMENTS

Separate sorption edges (sorption as a function of pH) were generated for Pu(IV) and Pu(V) for the four sediments listed in Table 2. Each sample was prepared by adding 0.5g of sediment to a pre-weighed, acid washed polypropylene 15mL centrifuge tube (Falcon Blue Max Jr., Becton Dickinson Labware, Franklin Lakes, NJ). The samples were weighed again and the total mass of sediment was determined by difference. Solutions of low CO₂, NaClO₄ at various pH values were prepared by adding different aliquots of 0.1M HCl, 0.1M NaOH, 0.04M NaClO₄, and DDI H₂O to achieve a final ionic strength of 0.02 within the pH range from 2-10. A 10mL aliquot of these solutions was added to the respective tubes. The tubes were weighed again and the total volume of solution was calculated by difference. The samples were then placed on an end-over-end shaker and pH adjusted every other day with HNO₃ or NaOH until the pH remained stable over the range desired. Samples containing no soil were also prepared to evaluate sorption of the plutonium to the vial walls. Tubes containing sediment but no plutonium spike were run in parallel to perform chemical analysis of the aqueous phase. Results of these analyses are presented in Appendix A.

After the pH remained stable for 48 hours (± 0.1 pH units), Pu(V) and Pu(IV) spikes were prepared as described above. For Pu(V) samples, 0.125mL of a 1547Bq/mL spike was added for a final concentration of approximately 15 Bq/mL. A 0.1mL aliquot of a 2100 Bq/mL Pu(IV) solution was added to each tube to give a final concentration of approximately 21 Bq/mL. Oxidation state analysis was performed on each spike using the methods discussed above, verifying that greater than 95% of the plutonium was in desired oxidation state. The samples were placed on the shaker for 24 hours, removed, and centrifuged 5 minutes at 5000 RPM. The aqueous phase was then filtered with Microsep 30K centrifugal filters. These filtered are calculated to retain 99% of the particles greater than 12nm. A 1.0mL aliquot of the filtrate was removed for liquid scintillation counting.

The samples containing Pu(IV) and no sediments showed extensive sorption to the vial walls. Therefore, the vials holding the Pu(IV)-sediment samples were immediately analyzed for the sorption to the vial walls. Three 5mL aliquots of DDI water were used to wash out the sediment and aqueous phase from each tube. Then 10mL of 1.0M HNO₃ was added to each tube, the tubes were weighed, and then were shaken overnight. A 1.0mL aliquot of each acid solution was removed to determine the total plutonium sorbed to the vial walls. Between 0 and 17% Pu(IV) sorbed to the vial walls for samples containing sediment. The initial concentration was adjusted by this fraction. There was no significant sorption of Pu(V) to the vial walls for the blank samples.

Analysis for iron and total organic carbon was performed on blank sediment samples containing no plutonium. A Perkin Elmer 5100 Atomic Absorption Spectrophotometer was used for iron determination and a Shimadzu 550 TOC Analyzer was used for organic carbon. Analyses were conducted on filtered and unfiltered samples.

4.0 RESULTS AND DISCUSSION

4.1 COLUMN EXPERIMENTS

4.1.1 Pu(V) Column Analysis

The ^3H elution profile for each column experiment are shown in Figure 4 and Figure 5. The curves indicate a single tritium peak that elutes around one DPV. The calculated retardation factors are listed in Table 4. All columns had calculated retardation factor for tritium of either 1.0 or 1.1. This suggests that no “channeling” or preferential flow was occurring within the column.

Measurements of the effluent pH versus DPV are plotted in Figure 6 for all column experiments. Each column was equilibrated with the aqueous phase at the respective pH as described previously. Therefore the small increases in the pH of the effluent observed for the pH3 and pH5 columns are due to the spike. Column pH3-B showed the greater increase in pH due the spike.

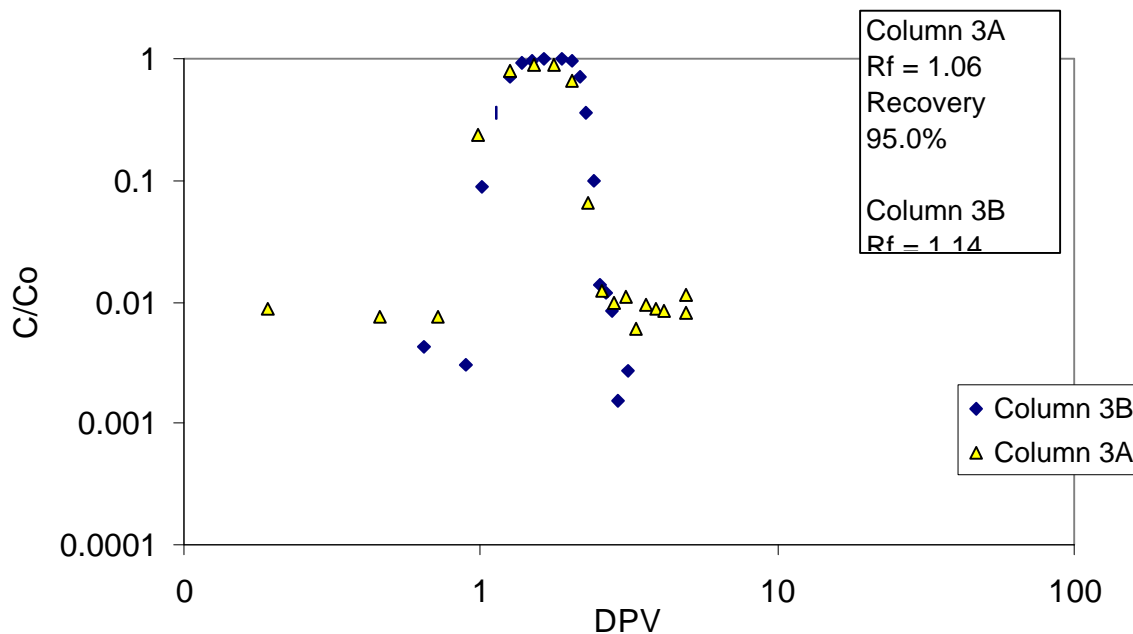


Figure 4. ^3H aqueous phase activity profile for pH 3 column experiments (C = concentration, C_0 = initial concentration; DPV = displaced pore volumes; Rf = retardation factor).

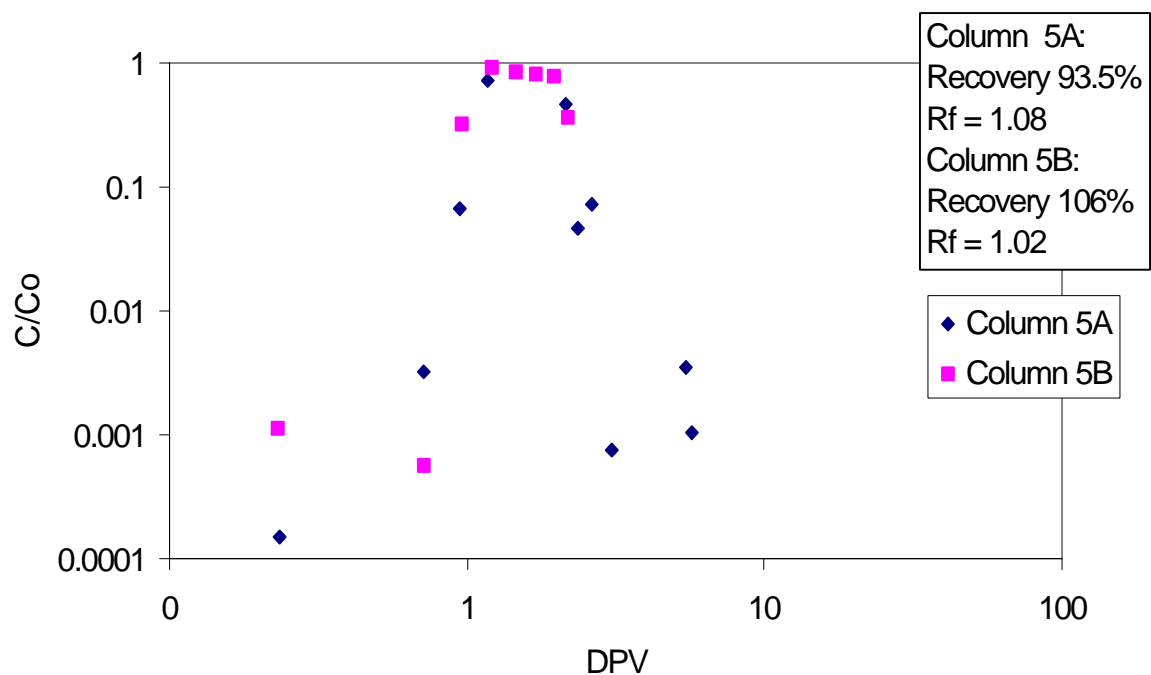
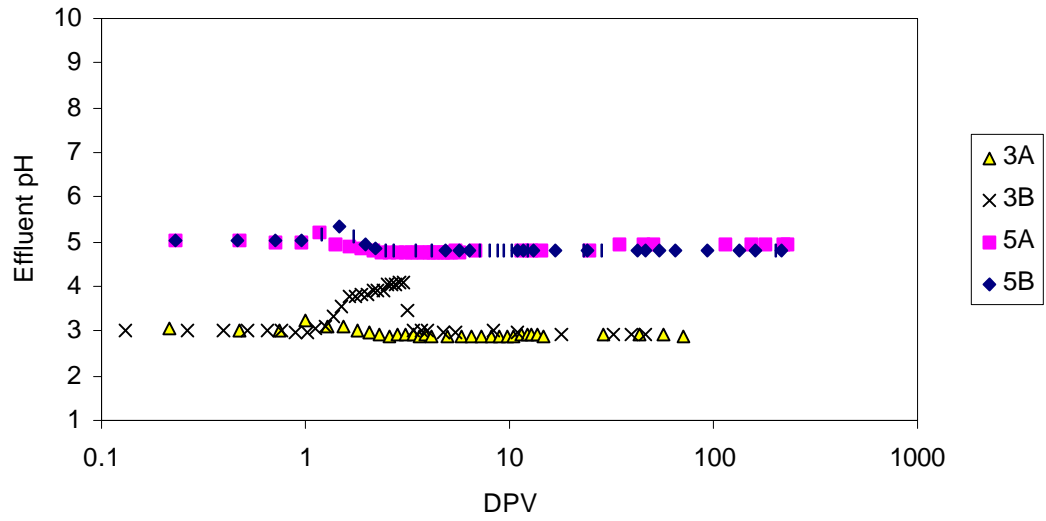


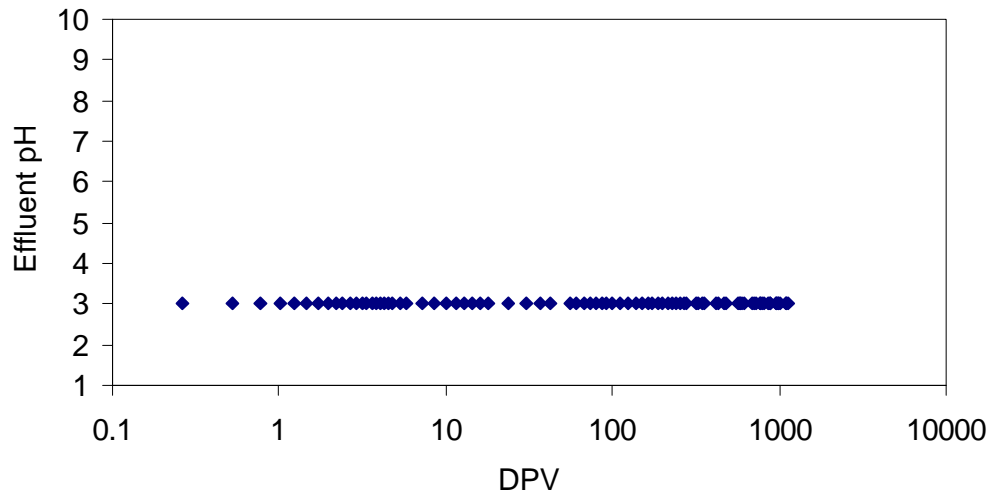
Figure 5. ³H aqueous phase activity profile for pH 5 column experiments (C = concentration, C₀ = initial concentration; DPV = displaced pore volumes; Rf = retardation factor).

Table 4. ³H and ²³⁹Pu retardation and recovery in pH 3 and pH 5 columns.

| Column | ²³⁹ Pu Spike Conc. (Bq/mL) | Displaced Pore Volumes (DPV) | ³ H Retardation Factor | ²³⁹ Pu Retardation Factor | Aqueous Recovery | Solid-Phase Recovery | Total Recovery |
|--------------|---------------------------------------|------------------------------|-----------------------------------|--------------------------------------|------------------|----------------------|----------------|
| Pu(V) pH 3-A | 309.6 | 71 | 1.1 | 1.3 | 94.1% | 1.0% | 95.1% |
| Pu(V) pH 3-B | 234 | 111 | 1.1 | 1.9 | 93.1% | 1.4% | 94.5% |
| Pu(V) pH 5-A | 229.7 | 232 | 1.1 | 4.4 | 75.5% | 6.5% | 82.0% |
| Pu(V) pH 5-B | 280.9 | 312 | 1.0 | 4.8 | 80.5% | 13.3% | 93.8% |
| Pu(IV) pH 3 | 268.5 | 1131 | 1.1 | NA | 1.7% | 64.5% | 66.2% |



Pu(V) pH 3 and pH 5 column experiments



Pu(IV) Column Experiment

Figure 6. Aqueous phase pH profile for plutonium column experiments (DPV = displaced pore volumes; 3A = pH 3 replicate A, 3B = pH 3 replicate B, 5A = pH 5 replicate A, and 5B = pH 5 replicated B).

The aqueous phase activity profiles for Pu(V) column experiments at pH 3 are presented in Figure 7. Total DPVs, spike concentrations, retardation factors, and recoveries for each column are shown in Table 4. The effluent profiles for experiments at pH 3 are characterized by one major peak in the effluent. This is consistent with Pu(V) being present only as the PuO_2^+ cation as suggested in Figure 2. There was little retardation of the main peak at pH3 as the retardation factors were 1.3 and 1.9 for experiment A and B, respectively. The difference in retardation factor between column 3A and 3B was likely attributed to the differences in pH noted above. The aqueous phase recoveries from the experiments were 94.1% and 93.1%, with only an additional ~1% of the Pu recovered from the sediment. **Error! Reference source not found.** contains the oxidation state analyses of the spike solution used for each experiment. According to the ion chromatography (IC) Pu oxidation states analyses, the pH 3 spikes were 3 to 6% Pu(IV). Thus, it is possible that the recoveries of Pu(V) were close to 100%.

Table 5. Plutonium oxidation state analysis results for plutonium column experiments.

| Column | Technique | Description/ DPV | Oxidation State Distribution | | | | Avg Recovery |
|---|-----------|---------------------|------------------------------|-----|-----|------|--------------|
| | | | III | IV | V | VI | |
| pH 3-A | HEDHP | Spike | 0% | 1% | 82% | 17% | *100% |
| | IC | Spike | 6% | | 97% | | 107% |
| | IC | 1.5 | 3% | | 94% | | 107% |
| | IC | 2.8 | 5% | | 95% | | 101% |
| pH 3-B | HEDHP | Spike | 0% | 1% | 85% | 13% | *104% |
| | HEDHP | 2.0 | 1% | 0% | 76% | 22% | *100% |
| | HEDHP | 2.4 | 0% | 1% | 87% | 13% | *100% |
| | HEDHP | 3.0 | 0% | 1% | 85% | 15% | *104% |
| | HEDHP | 3.5 | 1% | 2% | 80% | 18% | *100% |
| | IC | Spike | 4% | | 96% | | 110% |
| | IC | 1.4 | 3% | | 97% | | 122% |
| | IC | 1.8 | 6% | | 94% | | 82% |
| | IC | 2.3 | 13% | | 87% | | 93% |
| | IC | 3.5 | 1% | | 99% | | 98% |
| pH 5-A | HEDHP | Spike | 2% | 1% | 91% | 6% | *103% |
| | HEDHP | 3.1 | 1% | 1% | 92% | 6% | *99% |
| | HEDHP | 3.8 | 1% | 1% | 93% | 5% | *100% |
| | HEDHP | 4.5 | -1% | 2% | 95% | 4% | *106% |
| | IC | Spike | 8% | | 92% | | 80% |
| | IC | 2.8 | 2% | | 98% | | 118% |
| | IC | 3.5 | 12% | | 88% | | 112% |
| | IC | 4.7 | 8% | | 92% | | 117% |
| pH 5-B | HEDHP | Spike | 0% | 1% | 96% | 4% | *107% |
| | HEDHP | 3.1 | 1% | 0% | 94% | 5% | *96% |
| | HEDHP | 4.5 | 0% | 1% | 95% | 4% | *91% |
| | HEDHP | 6.0 | 2% | 0% | 92% | 5% | *86% |
| | HEDHP | 7.5 | -2% | 4% | 90% | 7% | *107% |
| | IC | Spike | 5% | | 95% | | 99% |
| | IC | 3.1 | 19% | | 81% | | 114% |
| IC | 7.5 | 7% | | 93% | | 120% | |
| Pu(IV) - pH 3 | HEDHP | Spike | 2% | 92% | 7% | 0% | *92% |
| | IC | Spike | 4% | | 96% | | 102% |
| Notes: The IC (ion chromatography; Section 3.1.1) system can only determine Pu(reduced) and Pu(oxidized). HDEHP: is the organic extraction procedure using TTA & HDEHP discussed in Section 3.1.1 *Average recovery is for the analysis procedure that is a mass balance of 4 samples. | | | | | | | |

The aqueous phase activity profiles for column experiments 5A and 5B are shown in Figure 8. The retardation factor for Pu(V) increased to approximately 4 as the pH of the aqueous phase was increased to 5 for column experiments 5A and 5B. This increase in retardation factor is consistent with an ion exchange mechanism of plutonium transport in these sediments. As the pH increases, the surface charge of the sediments increases. Therefore, the cationic PuO_2^+ ion is more strongly attracted to the surface, yielding a longer residence time within the column and a higher retardation factor. There was a decrease in the fractional recoveries for both pH5 experiments (Table 4). The observed increase in R and the decrease in fractional recoveries are consistent with previous work with SRS burial ground sediments (Serkiz et al., 2003). Thus, the data is supportive of the ion-exchange and surface-mediated reduction mechanisms within the conceptual model.

The conceptual model reduction of Pu(V) to Pu(IV) within the system introduces the possibility of Pu(IV) partitioning into the aqueous phase. However, these aqueous phase concentrations will be below the current detection limits. A hypothesis including uptake of Pu(IV) that is produced from reduction of Pu(V) explains the lost in fractional recovery of the plutonium spike. Filtration analysis of selected effluent samples indicated that all plutonium contained within the effluent was $<12\text{nm}$, thereby eliminating the possibility of a colloidal plutonium species. Table 6 contains filtration data at selected aqueous effluent fractions. All filtration samples showed greater than 90% recovery of plutonium in the filtrate.

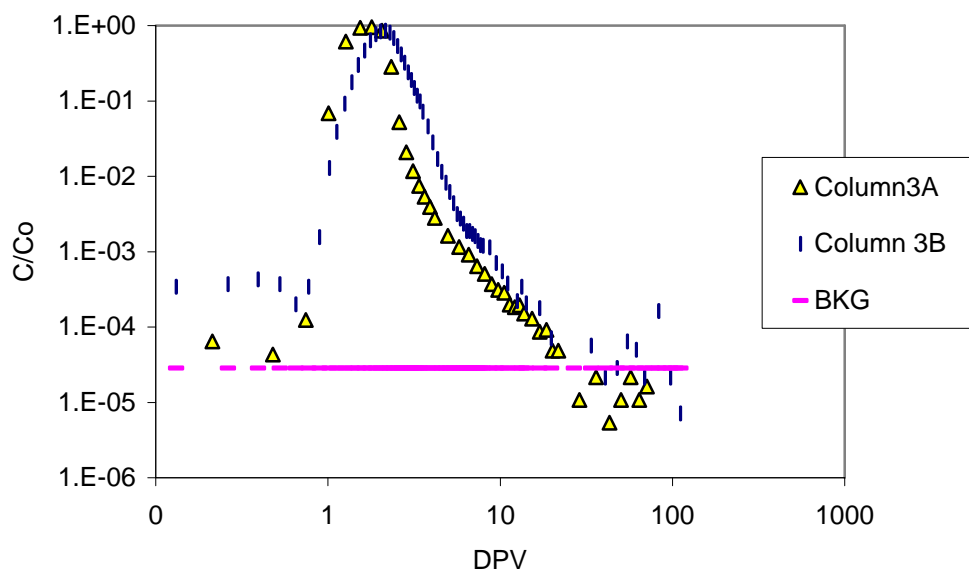


Figure 7. Effluent plutonium activity profile, Pu(V) pH 3 spike column experiments (C = concentration, C_o = initial concentration; DPV = displaced pore volumes; Rf = retardation factor; BFG = background).

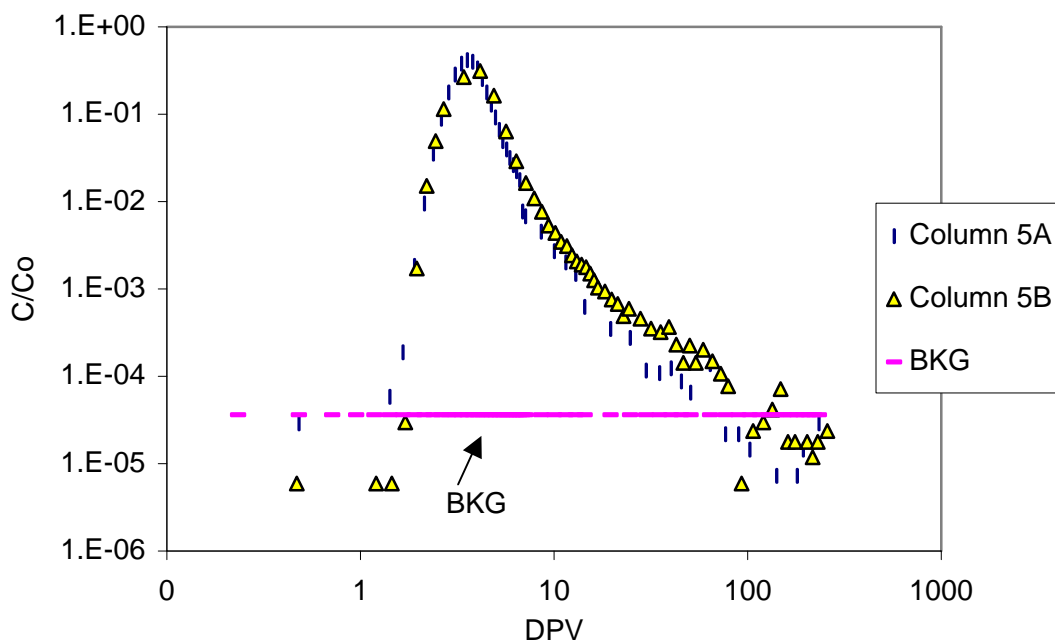


Figure 8. Effluent plutonium activity profile, Pu(V) pH 5 spike column experiments (C = concentration, C_o = initial concentration; DPV = displaced pore volumes; Rf = retardation factor; BFG = background).

The IC oxidation state analyses () indicate that all the spikes for Pu(V) column experiments were approximately 95% Pu(V) and 5% Pu(IV). The variability in the oxidation state analysis methods is partly due to the sensitivity of the methods used as well as the actually oxidation state distribution of plutonium. The recoveries from the techniques were between 80 and 122%, with an average total recovery of $105\% \pm 12\%$ from 32 experiments, indicating that both techniques performed satisfactorily. Also, there was good agreement between the two techniques. Both indicated that the predominant oxidation state in the effluent from all columns was Pu(V).

If Pu(V) was being reduced to Pu(IV) within the system, followed by Pu(IV) partitioning to the aqueous phase then an increase in Pu(IV) should be seen, though the increase in Pu(IV) concentrations could be below detection limits. An increase in Pu(IV) was not observed in the data (Table 5). Therefore, Pu(V) was the only measured oxidation state in the aqueous phase. Also, the activity of the effluent was all contained in one discrete peak, indicating one plutonium species that is most likely PuO_2^+ .

Table 6. Filtration analysis of Pu(V) column experiments.

| Column ID | Displaced Pore | | Effluent Bq/mL | Filtrate Bq/mL | % Soluble |
|-----------|------------------|--|-------------------|-------------------|-----------|
| | Volumes (DPV) | | | | |
| Column 3A | 1.8 | | 209.1 | 207.3 | 99% |
| Column 3A | 2.85 | | 23.1 | 23.1 | 100% |
| Column 3B | 1.9 | | 68.3 | 70.4 | 103% |
| Column 3B | 2.6 | | 98.7 | 95.1 | 96% |
| Column 5A | 3.31 | | 86.7 | 85.4 | 99% |
| Column 5A | 4.01 | | 76.4 | 74.3 | 97% |
| Column 5B | 4.5 | | 66.6 | 66.5 | 100% |
| Column 5B | 6.02 | | 13 | 13.3 | 102% |
| Column 5B | 7.5 | | 3.81 | 3.77 | 99% |

At the end of each column test, the sediment was immediately divided into 8 segments and digested with a strong acid solution (5M HCl and 5M HNO₃) to release plutonium from the sediment. The results (Table 4) indicate that this acid leaching process did not yield a 100% recovery of plutonium from any column experiment. Thus, there appears to be a particularly resistant form of plutonium in the columns that is operationally defined as an “immobile” fraction. In Table 7 are the aqueous, acid soluble, and immobile fractions from all column experiments.

Table 7. Aqueous, acid soluble, and immobile plutonium fractions in pH 3 and pH 5 columns.

| Column | Spike Conc. (Bq/mL) | Displaced Pore Volumes (DPV) | Aqueous Fraction ^a | Acid Soluble Fraction ^a | Immobile Fraction ^a |
|--|---------------------------|------------------------------------|----------------------------------|---------------------------------------|-----------------------------------|
| pH 3-A | 309.6 | 71 | 94.1% | 1.0% | 4.9% |
| pH 3-B | 234 | 111 | 93.1% | 1.4% | 5.5% |
| pH 5-A | 229.7 | 232 | 75.5% | 6.5% | 18.0% |
| pH 5-B | 280.9 | 312 | 80.5% | 13.3% | 6.2% |
| Pu(IV) pH 3 | 268.5 | 1131 | 1.7% | 64.5% | 33.8% |
| ^a Aqueous Fraction = ²³⁹ Pu in effluent Acid Soluble Fraction = ²³⁹ Pu extracted by 5M HNO ₃ /HCl Immobile Fraction = 100 – Acid Soluble Fraction – Aqueous Fraction | | | | | |

The acid soluble activity is plotted as a function of distance from the column Figure 9 and Figure 10 for pH 3 and pH 5, respectively. Each column shows a similar profile where the largest fraction was retained within the first two centimeters. The activity recovered from the first two centimeters is likely Pu(IV) in the spike solution. The low mobility of Pu(IV) would cause it to be retained near the column inlet. The approximately uniform distribution of activity

in the remainder of the column is consistent with the Pu(V) reduction hypothesis. As Pu(V) moves through the column, a small amount is continuously reduced to Pu(IV) and retained. This conceptualization is illustrated in Figure 11. The sorbed concentration would actually decline with distance from the inlet because the aqueous phase concentration of Pu(V) declines. The extent of the decline depends on the Pu(V) residence time, i.e., as R increases the decline becomes steeper.

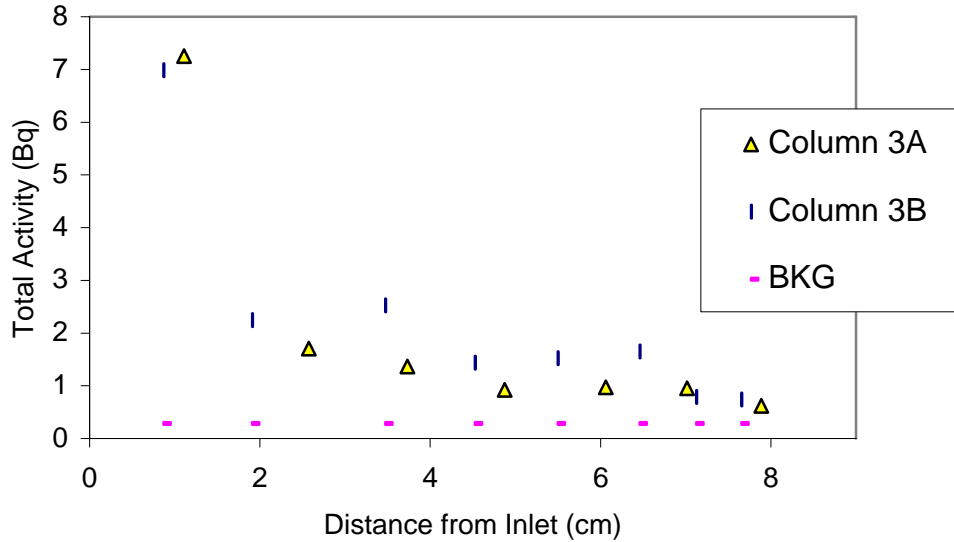


Figure 9. Acid-soluble Pu in sediment as a function of distance in the pH 3 column experiments.

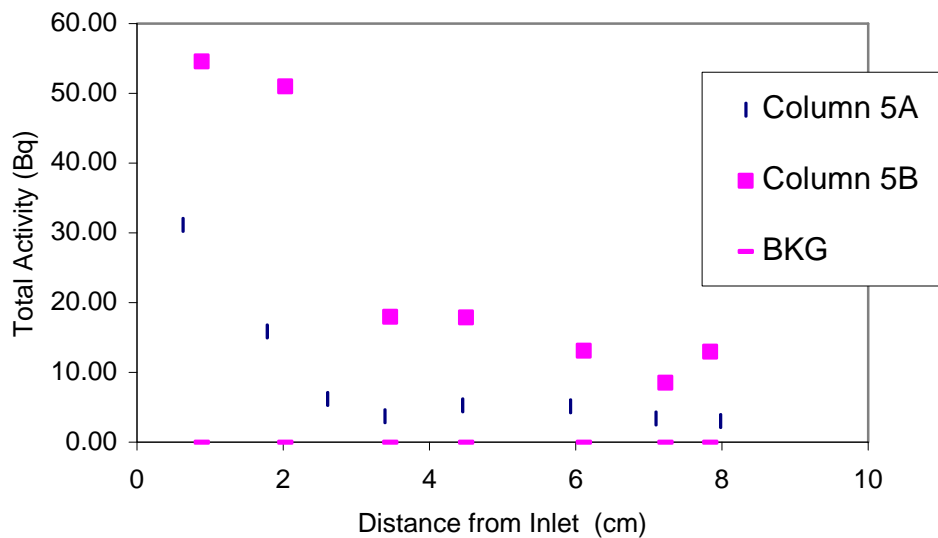


Figure 10. Acid-soluble Pu in sediment as a function of distance in the pH 5 column experiments.

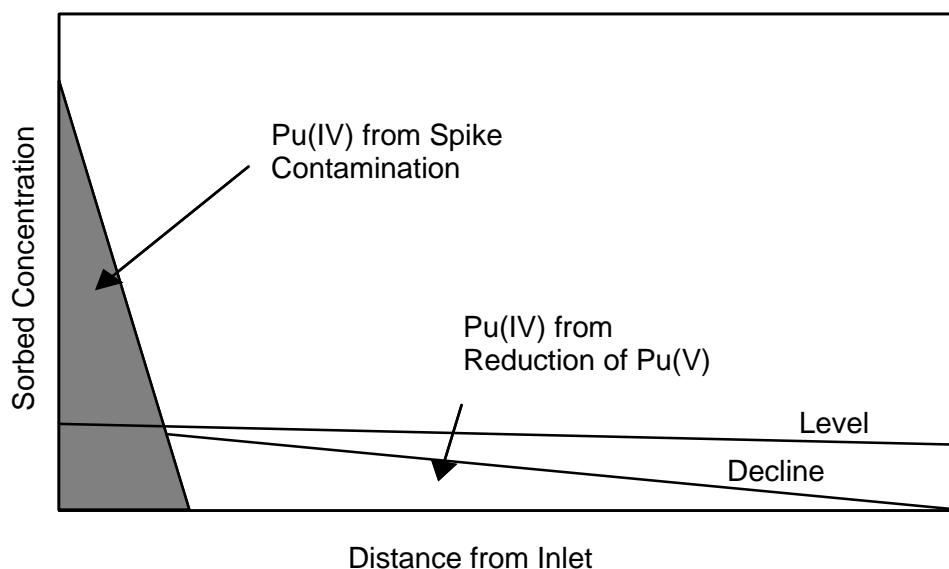


Figure 11. Schematic representation of hypothesis for Pu(IV) source in solid phase activity profiles.

4.1.2 Pu(IV) Column Analysis

One column was spiked with Pu(IV) to determine if aqueous partitioning of sorbed Pu(IV) was likely in this system. There was a small fraction (1.7%) which eluted with ^3H , exhibiting no retardation. This was the only aqueous plutonium eluted from the column after 1047 DPV were passed through. Filtration analysis at 12nm verified that this material was a soluble fraction. This may have been due to Pu(V) contamination of the Pu(IV) spike. Oxidation state analyses showed that Pu(V) and Pu(VI) accounted for ~7% of the Pu in the “Pu Table 5). Thus, most, if not all, of the Pu(IV) spiked into solution strongly partitioned to the solid phase and remained associated to the sediment for extended periods of time.

At the end of the experiment, the sediment was digested as done for the Pu(V) column experiments. The solid phase activity profile is shown in Figure 12 and the recovery and retardation factor data are shown in Table 4. The profile differed from those obtained at the end of Pu(V) experiments. First, a larger fraction of the activity was found past the first 1.5cm of the column. Second, there was a much sharper decline in the activity between 1.5cm and the outlet of the column. It cannot be confirmed from this data if the apparent transport was a kinetic limitation for Pu(IV) given the short residence time in the column or if it represents the slow transport of Pu(IV) through the system. Increases in aqueous phase concentrations of Pu(IV) were not detected within the time scales used in the Pu(V) column experiments. Therefore, confirmation of Pu(IV) mobility in these systems must take place using a solid phase oxidation state analysis technique.

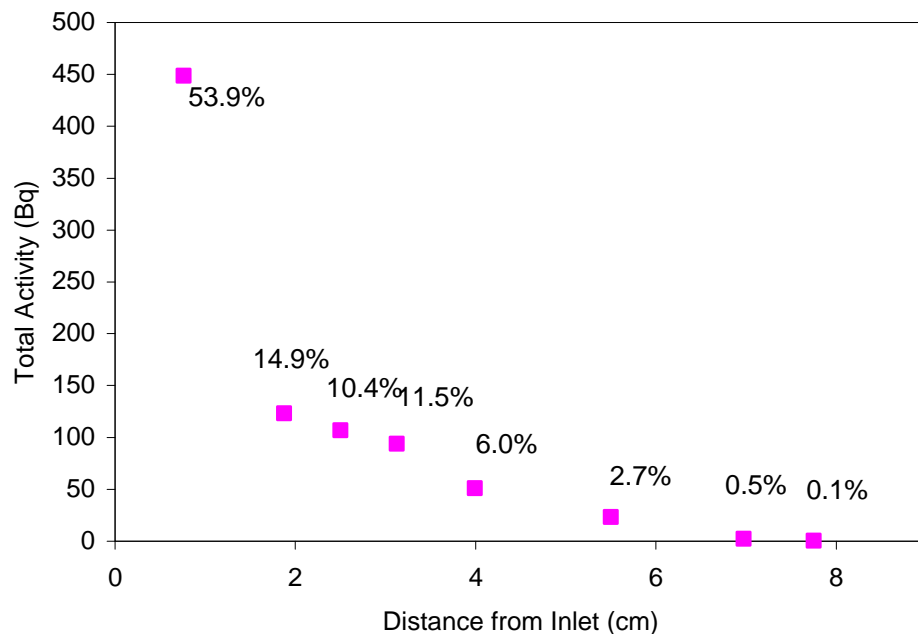


Figure 12. Acid-soluble Pu in sediment as a function of distance in the pH3 Pu(IV) column experiments. Note: Percentages are percent acid-soluble activity.

4.2 SORPTION EDGE EXPERIMENTS

Pu(IV) and Pu(V) sorption edges for all four sediments listed in Table 2 are presented in Figure 13. Overall, the expected trend of strong Pu(IV) sorption is seen for all sediments studied. The sorption edge for Pu(V) shifted with time for all sediments studied, suggesting reduction of Pu(V) to Pu(IV). There are large differences observed between surface and subsurface sediments.

4.2.1 Subsurface Sandy Sediment

For the subsurface sandy sediment approximately 30% sorption of Pu(IV) occurred at pH 1.7 and greater than 95% was sorbed for pH's greater than 2.4. A constant 20% of Pu(V) was sorbed between pH 2 and 5. This sorption of a cationic species at low pH values could be due to a permanent negative charge present on the surface of the sediment from cationic substitutions into the mineral lattice. The speciation distribution in Figure 3 indicates significant amounts of all cationic hydrolysis species of Pu(IV) that could interact with a permanent negative charge on the sediment surface. Around pH 5, Pu(V) sorption increased, until reaching greater than 99% sorption was reached around pH 6.3. After 33 days, the Pu(V) samples were analyzed again and corrected for the new suspended solids concentrations. The sorption edge shifted to a lower pH and the curve began to resemble that of Pu(IV). This behavior is consistent with reduction of Pu(V) to Pu(IV). Oxidation state analysis was performed on the aqueous phase of the lowest pH sample. Pu(V) was still the dominant species, and there was no evidence of Pu(IV) partitioning into the aqueous phase after 33 days.

4.2.2 Subsurface Clayey Sediment

Pu(IV) was more strongly sorbed at low pH values in the subsurface clayey sediment than in the subsurface sandy sediment. There was approximately 80% sorbed at pH 1.7 and greater than 95% sorbed for pH values above 2.3. As seen in the subsurface sandy sediment, the fraction of Pu(V) sorbed was approximately 20% between pH 2 and 4. Between pH 4 and 5.5 the fraction sorbed increased substantially and exceeded 95% at pH 5.5. After 33 days, the plot for Pu(V) was very similar to that for Pu(IV), suggesting reduction of Pu(V).

4.2.3 Surface Sandy Sediment

For the surface sandy sediment, greater than 95% of Pu(IV) was sorbed at pH values greater than 2.3. A small amount of Pu(IV) remained in the aqueous phase at pH 2.0. There is no apparent trend for Pu(V) sorption. The samples were analyzed again after 6 days. During this analysis, one sample was filtered at 12nm and another separate sample was filtered at 3nm. A plot of the Pu(V) sorption edge at 6 days is shown in Figure 14. The sorbed fraction exceeded 93% for all but two samples (pH 1.9 and 4.2). There was no difference between samples filtered at 3nm and 12nm. The smaller size filter was used to ensure that a colloidal form of plutonium was not causing the anomaly observed in the data taken at 24 hours. After 33 days the plot of Pu(V) closely resembled that of Pu(IV).

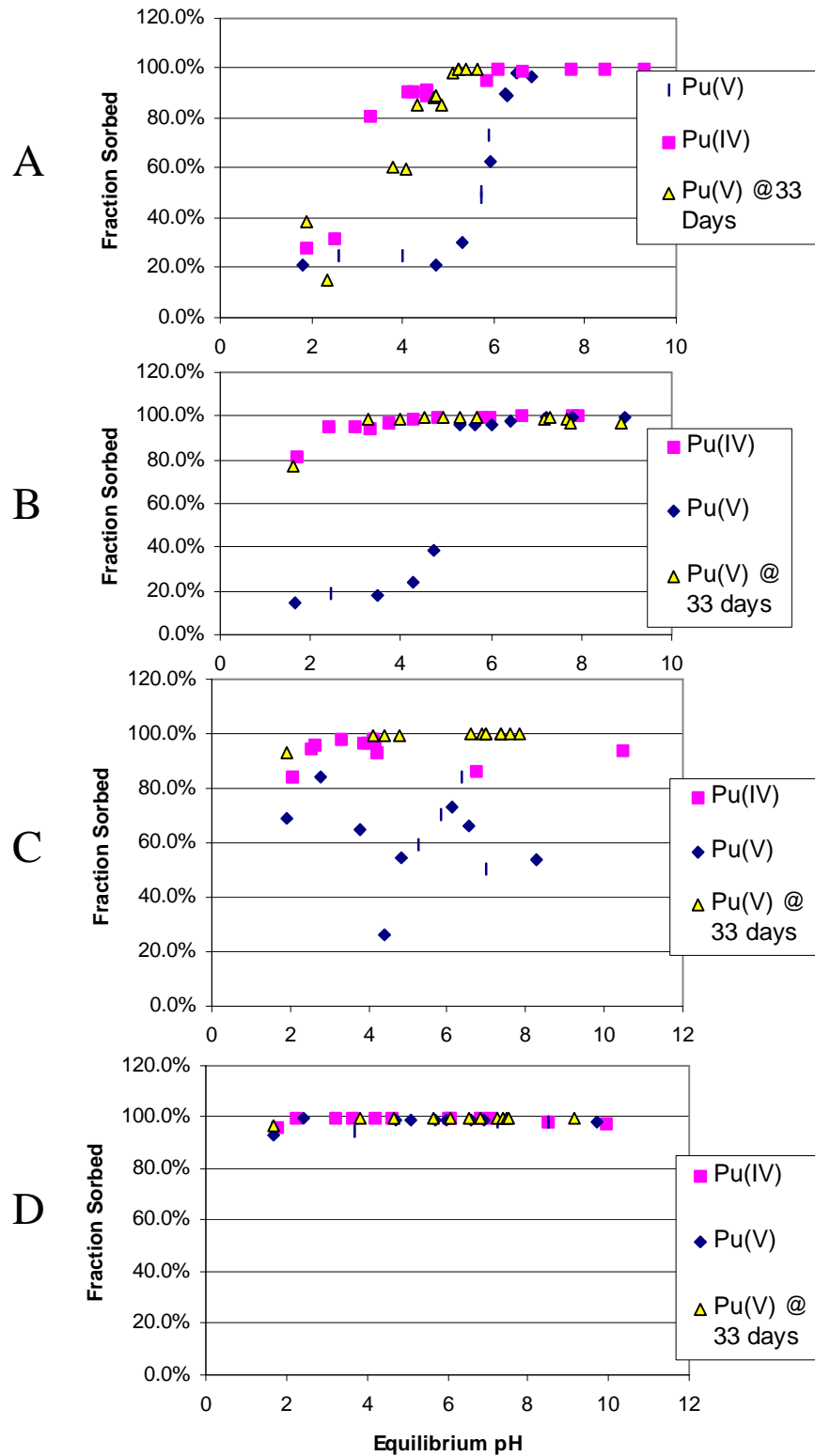


Figure 13. Pu(IV) and Pu(V) sorption edge at 24 hr or 33 days on: (A) subsurface sandy sediment, (B) subsurface clayey sediment, (C) surface sandy sediment, and (D) surface clayey sediment.

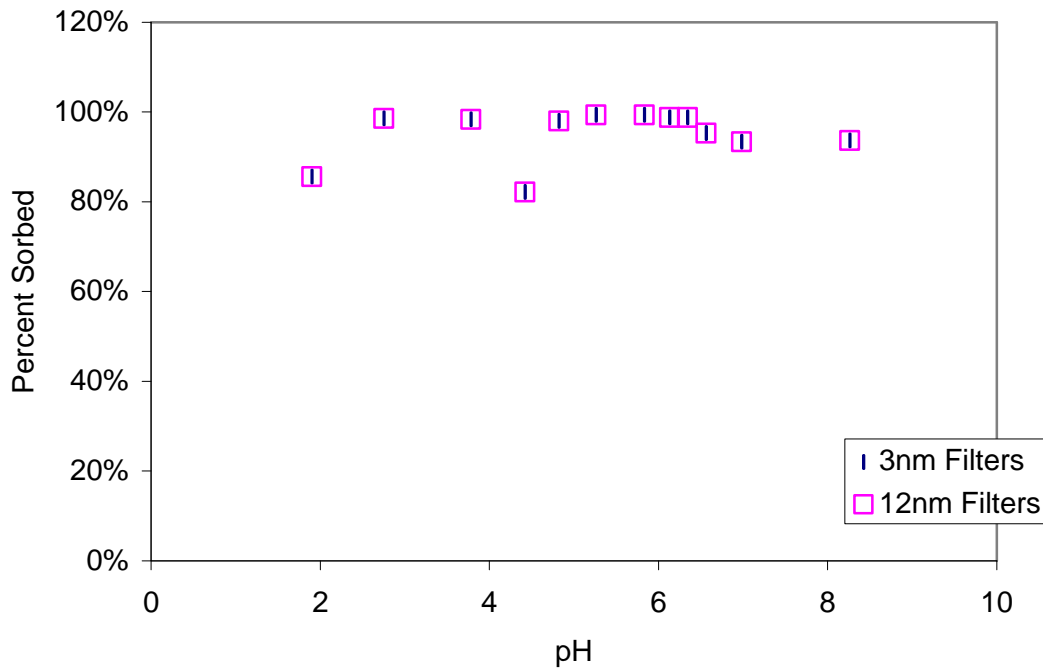


Figure 14. Pu(V) sorption edge on surface sandy sediment at 6 days.

4.2.4 Surface Clayey Sediment

In all cases greater than 95% sorption occurred for both oxidation states in the pH range 1.6 to 9.8 within 24 hours. Data taken at 33 days from the Pu(V) samples show no significant variation from the data taken at 24 hours. Strong sorption to this sediment is likely attributed to the greater surface area and organic matter concentration of this sediment (Table 2).

4.2.5 Calculation of K_d from Sorption Edge Experiments

The “apparent K_d” for each sample is given in Appendix B. The term “apparent K_d” is used for this quantity because the samples may not have reached equilibrium and Pu(IV) colloids less than 12nm may have affected the measurements. Presented in Table 8 are the ranges of “apparent K_d” for each sediment. These values were obtained from:

$$K_d = \frac{C_o - C_t}{C_t} \cdot \frac{1}{SS} \tag{4}$$

where C_o is the initial plutonium aqueous phase concentration, C_t is the plutonium aqueous phase concentration at time = t, and SS is the suspended solids concentration. Also, the values at the

upper ends of the range, i.e., the larger K_d values, were calculated using aqueous phase concentrations that were close to the detection limit. Consequently, the uncertainty associated with these values is high.

Table 8. Apparent K_d range for sorption edge sediments.

| Sediment | Sample Description | Apparent K_d Range |
|-------------------|--------------------|----------------------|
| Subsurface Sandy | Pu(IV) | 8 to 9300 |
| Subsurface Sandy | Pu(V) | 6 to 1100 |
| Subsurface Sandy | Pu(V) at 33 days | 3 to 4900 |
| Subsurface Clayey | Pu(IV) | 90 to 50000 |
| Subsurface Clayey | Pu(V) | 4 to 660 |
| Subsurface Clayey | Pu(V) at 33 days | 60 to 10100 |
| Surface Clayey | Pu(IV) | 500 to 4600 |
| Surface Clayey | Pu(V) | 300 to 2600 |
| Surface Clayey | Pu(V) at 33 days | 500 to 33000 |
| Surface Sandy | Pu(IV) | 100 to 1100 |
| Surface Sandy | Pu(V) | 7 to 100 |
| Surface Sandy | Pu(V) at 33 days | 150 to 20000 |

5.0 SUMMARY

The principal findings of this research are as follows.

Column Experiments

- The retardation factor of Pu(V)O_2^+ increased with pH. This is consistent with an ion exchange sorption mechanism. The fractional recovery of Pu(V)O_2^+ in the column effluent decreased as the pH of the influent solution increased. These findings are consistent with previous work in SRS sediments and support the hypothesis of an ion-exchange sorption mechanism coupled with surface mediated reduction of Pu(V).
- All four column effluent profiles show one main peak, indicating one plutonium species. This does not agree with a previous single column result conducted with pH3 SRS sediment (Serkiz et al., 2003) in which two peaks were observed in the effluent profile.
- Two separate methods of oxidation state analysis show no evidence of Pu(IV) in column effluents spiked with Pu(V).

- A column spiked with Pu(IV) had no significant aqueous activity eluted within 1000 DPV. The apparent limited mobility of Pu(IV) could be due to a kinetic limitation of sorption or slow transport of Pu(IV) within the column. Further experiments are required to determine the precise mechanism of Pu mobility under these experimental conditions.
- The less than 100% recoveries observed following strong acid leaching for several column experiments indicates that the plutonium may be irreversibly sorbed to the sediment surface or interstitial spaces.

Batch Experiments

- All sorption edge data for Pu(IV) indicates strong sorption for the pH range in this work. Therefore transport of Pu(IV) within a column is not likely.
- The sorption edge of Pu(V) shifted with time to resemble that of Pu(IV) for all sorption edge experiments. This suggests the reduction of Pu(V) to Pu(IV) within these systems.
- Non-zero sorption for Pu(IV) and Pu(V) was observed at low pH values for all sorption edge experiments. Therefore, even at low pHs the cationic plutonium species significantly adsorb to the sediment.

6.0 REFERENCES

- Allard, B., Kipatsi, H., Liljenzin, J.O., "Expected Species of Uranium, Neptunium, and Plutonium in Neutral Aqueous Solutions" *J. Inorg. Nucl. Chem.* 42, 1015-1027, 1980.
- Choppin, G.R., Bond, A.H., and Hromadka, P.M. "Redox Speciation of Plutonium" *J. of Radio. Nucl. Chem.* 219(2), 203-210, 1997.
- Clark, M.M., Transport Modeling for Environmental Engineers and Scientists, John Wiley and Sons, Inc., New York, 1996.
- Cleveland, J.M. *The Chemistry of Plutonium* p. 651. American Nuclear Society, La Grange Park, IL (1979).
- Coates, J.T., Fjeld, R.A., Paulenova, A., and DeVol, T., "Evaluation of a Rapid Technique for Measuring Actinide Oxidation States in a Groundwater Simulant," *J. Radioanal. Nucl. Chem.*, 248(2), 501-506, 2001.
- Delany, J.M. and Lundeen, S.R., "The LLNL Thermochemical Database", Lawrence Livermore National Laboratory Report UCRL-21658, 150 p., 1990.
- Duff, M.C., Hunter, D.B., Triay, I.R., Bertsch, P.M., Reed, D.T., Sutton, S.R., Shea-McCarthy, G., Kitten, J., Eng, P., Chipera, S.J., and Vaniman, D.T., "Mineral Associations and Average Oxidation States of Sorbed Pu on Tuff" *Environ. Sci. Tech.* 33, 2163-2169, 1999.
- Farr J.D., Schulze, R.K., and Honeyman, B.D. "Aqueous Pu(IV) Sorption on Brucite" *Radiochim. Acta.* 88, 675-679, 2000.
- Fjeld, R. A., Coates, J. T., and Elzerman, A. W., "Column Tests to Study the Transport of Plutonium and Other Radionuclides in Sedimentary Interbed at INEEL," Final Report submitted to the Idaho National Engineering and Environmental Laboratory, Idaho Falls, ID, December 2000.
- Fjeld, R. A., DeVol, T. A., Goff, R. W., Blevins, M. D., Brown, D. D., Ince, S. M., and Elzerman, A. W., "Characterization of Mobilities of Selected Actinides and Fission/Activation Products in Laboratory Columns Containing Basalt and Sedimentary Interbed from the Snake River Plain" *Nuclear Technology*. In press, 2003.
- Fjeld, R.A., Serkiz S.M., McGinnis P.L., Elci A., Kaplan D.I., "Evaluation of a Conceptual Model for the Subsurface Transport of Plutonium Involving Surface Mediated Reduction of Pu(V) to Pu(IV)." *J. of Cont. Hydro.* In review, 2003
- Haschke, J.M., Allen, T.H., "Equilibrium and thermodynamic Properties of the PuO_{2+x} Solid" *J of Alloy and Comp.* 2002, 336, 124-131.

Haschke, J.M., Allen T.H., and L.A. Morales, "Reaction of Plutonium Dioxide With Water: Formation and Properties of PuO_{2+x} ", *Science*, Volume 287, pp.285-287, 1/14 (2000).

Hobart, D.E., "Actinides in the Environment" Proceedings of The Robert A. Welch Conference on Chemical Research XXXIV Fifty Years with Transuranium Elements." October 22-23, 1990, Houston, TX, 1990.

Keeney-Kennicutt, W.L. and Morse, J.W. "The Redox Chemistry of PuO_2^+ Interaction with Common Mineral Surfaces in Dilute Solutions and Seawater" *Geochim. Cosmochim. Acta*, 49, 2577-2588, 1985.

Kim, J.O. "Chemical Behavior of Transuranic Elements in Natural Aquatic Systems" In A.J. Freeman and C. Keller (Eds.) Handbook of the Physics and Chemistry of the Actinides, Volume 4. North-Holland Press, Amsterdam p. 413-455, 1986.

Langmuir, D. *Aqueous Environmental Chemistry*, Prentice Hall, Upper Saddle River, New Jersey, 1997, p. 486-547

Morgenstern, A. and Choppin, G.R., "Kinetics of the Oxidation of Pu(IV) by Manganese Oxide" *Radiochim. Acta*, 90(2), 69-74, 2002.

Neck, V. and Kim, J.I., "Solubility and Hydrolysis of Tetravalent Actinides" *Radiochim. Acta* 88(1), 1-16, 2001.

Nelson, D.M., Larson, R.P., and Penrose, W.R., "Chemical Speciation of Plutonium In Natural *Environmental Research on Actinide Elements*, J.E. Pinder, J.J. Alberts, K.W.

McLeod, and R.G. Schreckhise (eds.), p. 27-48, CONF-841142, Office of Scientific and Technical Information, U.S. Department of Energy, Washington D.C., 1987.

Neu, M.P., Hoffman, D.C., Roberts, K.E., Nitsche, H., Silva, R.J., "Comparison of Chemical Extractions and Laser Photoacoustic Spectroscopy for the Determination of Plutonium Species in Near-Neutral Carbonate Solutions" *Radiochim. Acta*, 66, 265-272, 1994.

Nitsche, H., and Edelstein, N.M., "Solubilities and Speciation of Selected Transuranium Ions. A Comparison of a Non-Complexing Solution with a Groundwater from the Nevada Tuff Site" *Radiochim. Acta.*, 39, 23-33, 1985.

Nitsche, H., Lee, S.C., Gatti, R.C., "Determination of Plutonium Oxidation States at Trace Levels Pertinent to Nuclear Waste Disposal" *J. Radioanal. Nucl. Chem.* 124(1), 171-185, 1988.

Prout, W.E. "Adsorption of Fission Products by Savannah River Plant Soil" *Soil Sci.* 13-17, 1958
Sanchez A.L., Murray J.W., and Sibley T.H. "The Adsorption of Plutonium IV and V on *Geochim. et Cosmochim. Acta*, 49, 2297-2307, 1985.

Satio, A.M., Roberts R.A., and Choppin G.R., "Preparation of Tracer Level Plutonium(V)", *Anal. Chem.* 57, 390-391, 1985.

Serkiz, S. M., Gibbs, B. W., Fjeld, R. A., and Coates, J. T. "The Influence of pH on Plutonium (V) Transport Through a Sandy Atlantic Coastal Plain Soil in a Low-Carbonate System." In preparation. 2003.

Shaugnessy, D.A., Nitsche, H., Serne, R.J. Shuh, D.K., Waychunas, G.A., Booth, C.H., and Gill, H.S. "Interfacial Reaction Studies of Plutonium on Manganese Oxide Hydroxide Mineral" *Abstr. Pap. Am. Chem. Soc.* 220: 227-ENVR Part 1, August 20, 2000.

Silva, R.J. and Nitsche, H. "Actinide Environmental Chemistry" *Radiochim. Acta.* 70/71, 377-396, 1995.

Sparks, D. L. (Editor) 1996. *Methods of Soil Analysis, Part 3 – Chemical Methods.* Soil Science Society of America Publishers, Madison, WI.

**7.0 APPENDIX A: IRON AND ORGANIC CARBON MEASUREMENTS
OF SORPTION EDGE BLANK SAMPLES**

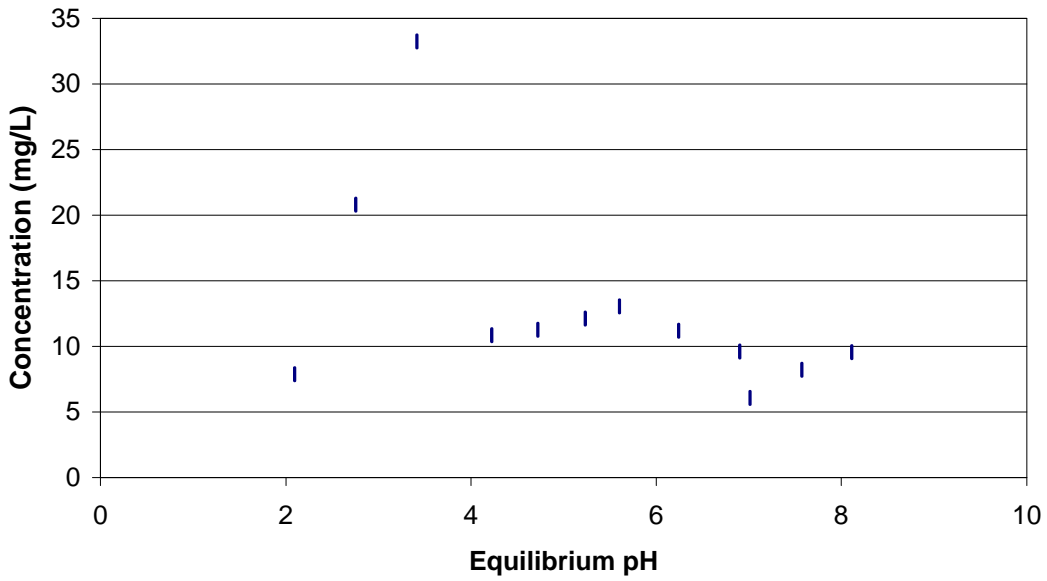


Figure A. 1. TOC versus pH for sorption edge blank samples, subsurface sandy.

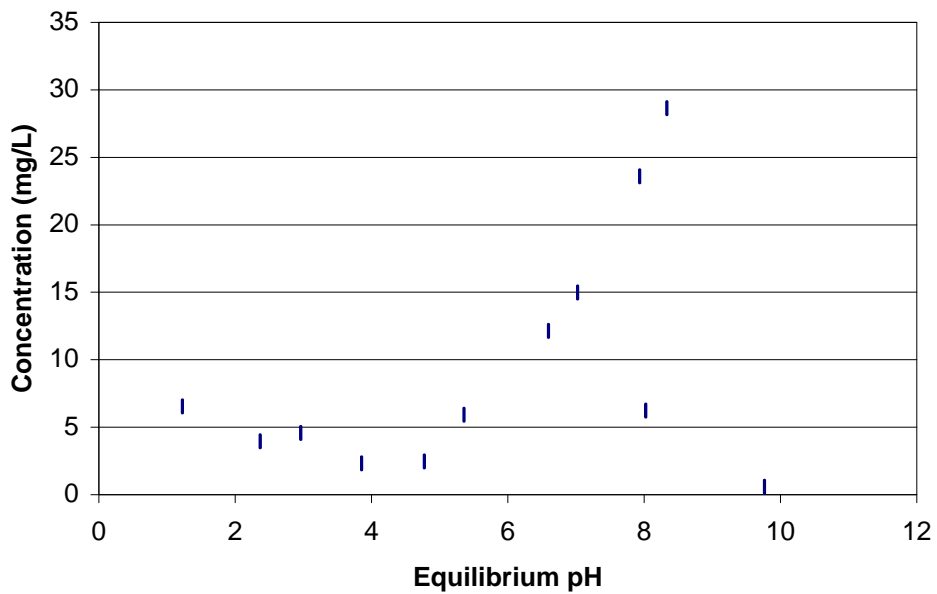


Figure A. 2. TOC versus pH for sorption edge blank samples, subsurface clayey.

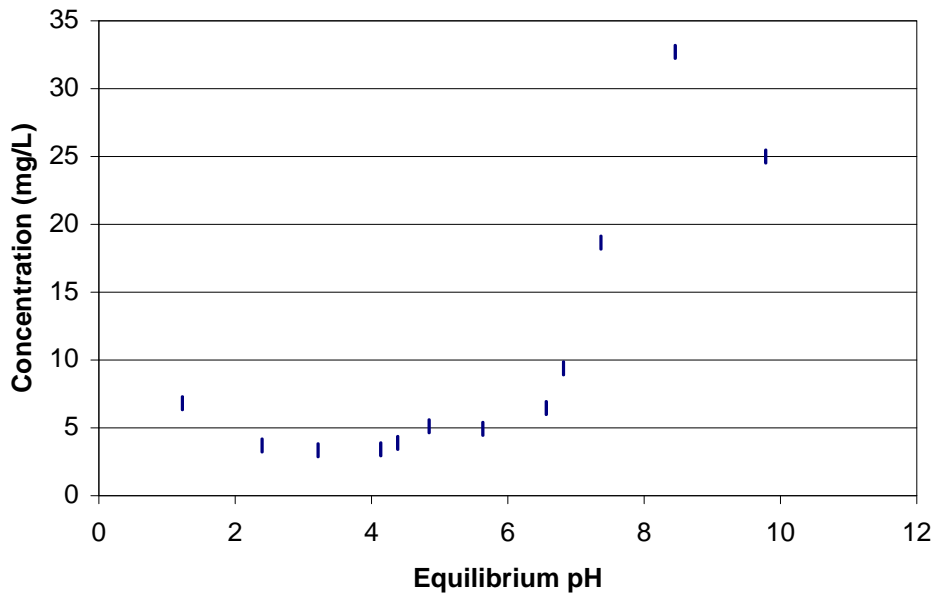


Figure A. 3. TOC versus pH for sorption edge blank samples, surface sandy.

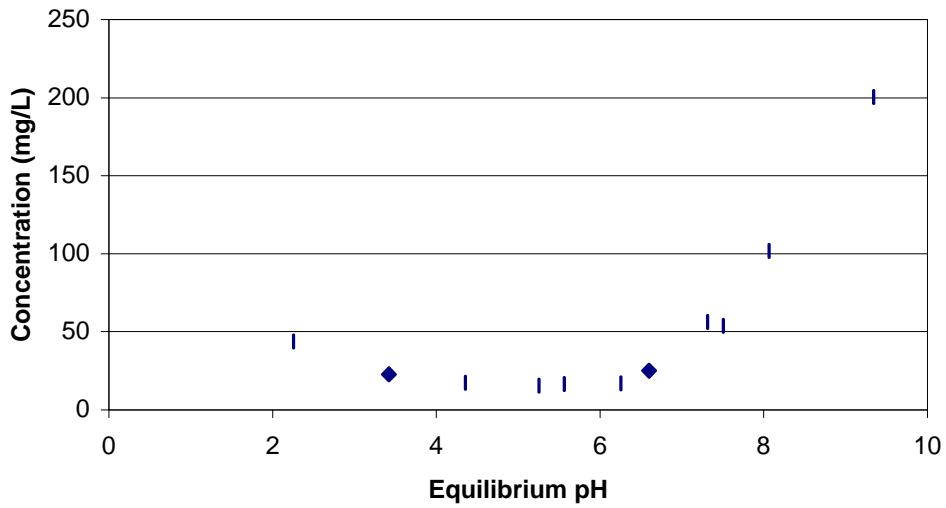


Figure A. 4. TOC versus pH for sorption edge blank samples, surface clayey.

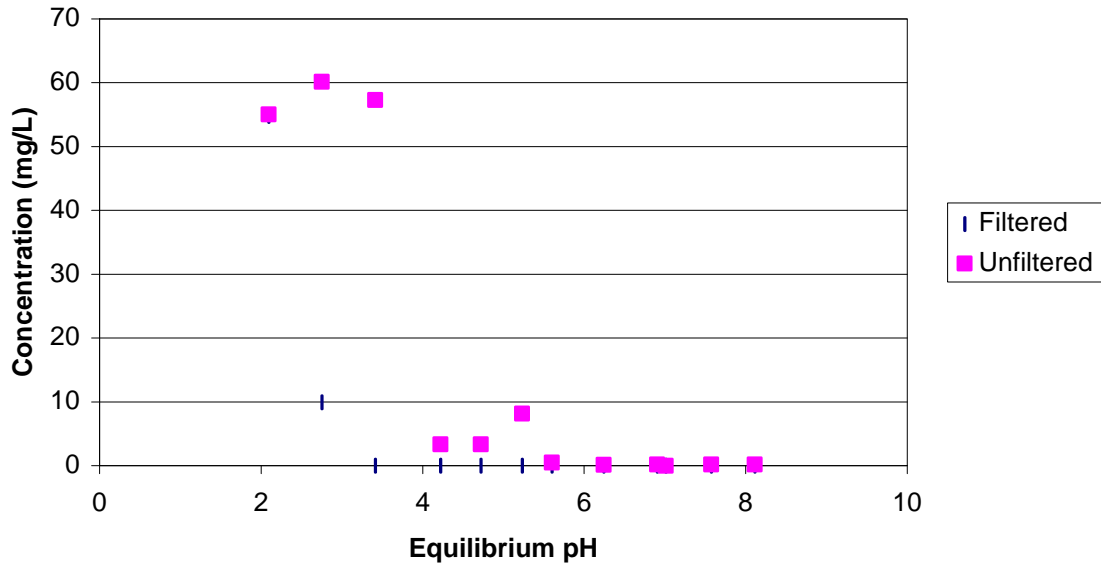


Figure A. 5. Iron determination in sorption edge blanks, subsurface sandy.

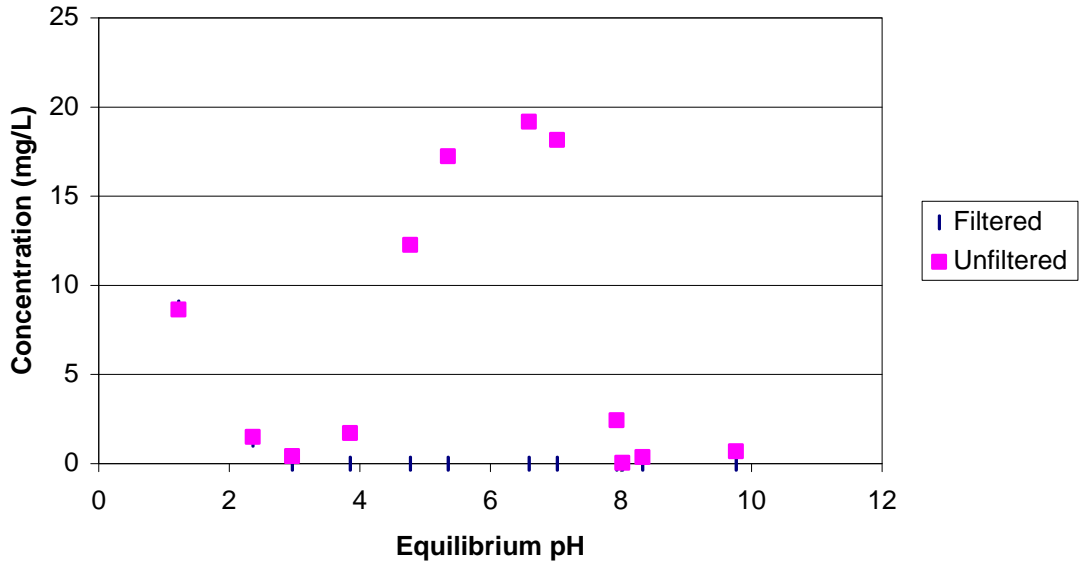


Figure A. 6. Iron determination in sorption edge blanks, subsurface clayey.

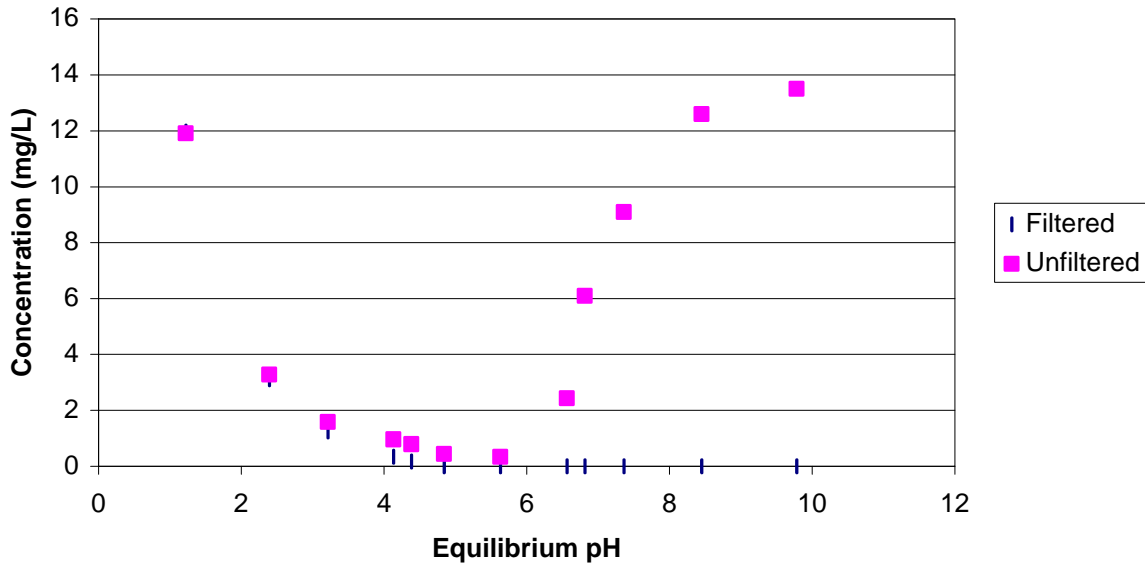


Figure A. 7. Iron determination in sorption edge blanks, Surface Sandy Sediment.

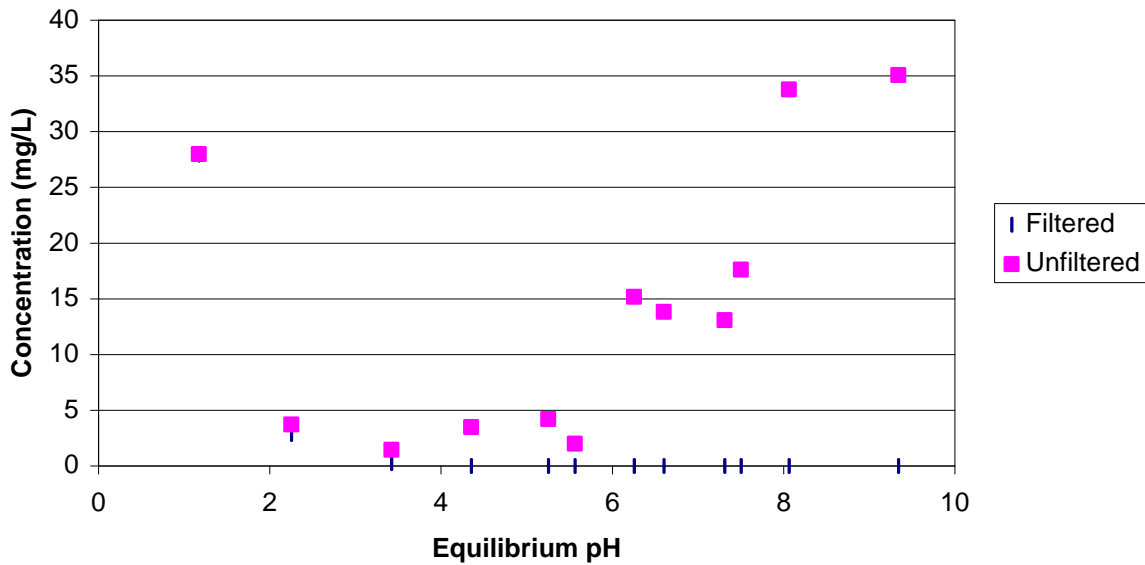


Figure A. 8. Iron determination in sorption edge blanks, Surface Clayey Sediment.

**8.0 APPENDIX B: APPARENT K_D CALCULATIONS FROM SORPTION
EDGE SAMPLES**

Table B. 1. Apparent Kd values from plutonium sorption edge experiments.

| Sample ID | Sample Description | pH | Apparent Kd |
|------------------|--------------------|------|-------------|
| Subsurface Sandy | Pu(IV) | 1.91 | 8 |
| Subsurface Sandy | Pu(IV) | 2.52 | 9 |
| Subsurface Sandy | Pu(IV) | 3.29 | 90 |
| Subsurface Sandy | Pu(IV) | 4.12 | 180 |
| Subsurface Sandy | Pu(IV) | 4.51 | 160 |
| Subsurface Sandy | Pu(IV) | 4.23 | 190 |
| Subsurface Sandy | Pu(IV) | 4.53 | 220 |
| Subsurface Sandy | Pu(IV) | 5.85 | 390 |
| Subsurface Sandy | Pu(IV) | 6.61 | 2500 |
| Subsurface Sandy | Pu(IV) | 6.10 | 2800 |
| Subsurface Sandy | Pu(IV) | 7.70 | 2800 |
| Subsurface Sandy | Pu(IV) | 8.42 | 20000 |
| Subsurface Sandy | Pu(IV) | 9.28 | 9300 |
| Subsurface Sandy | Pu(V) | 1.81 | 6 |
| Subsurface Sandy | Pu(V) | 2.58 | 7 |
| Subsurface Sandy | Pu(V) | 3.99 | 7 |
| Subsurface Sandy | Pu(V) | 4.75 | 6 |
| Subsurface Sandy | Pu(V) | 5.30 | 9 |
| Subsurface Sandy | Pu(V) | 5.72 | 20 |
| Subsurface Sandy | Pu(V) | 5.72 | 20 |
| Subsurface Sandy | Pu(V) | 5.94 | 30 |
| Subsurface Sandy | Pu(V) | 5.90 | 60 |
| Subsurface Sandy | Pu(V) | 6.27 | 180 |
| Subsurface Sandy | Pu(V) | 6.28 | 160 |
| Subsurface Sandy | Pu(V) | 6.51 | 1100 |
| Subsurface Sandy | Pu(V) | 6.83 | 700 |
| Subsurface Sandy | Pu(V) @ 33 days | 1.91 | 10 |
| Subsurface Sandy | Pu(V) @ 33 days | 2.36 | 3 |
| Subsurface Sandy | Pu(V) @ 33 days | 3.79 | 30 |
| Subsurface Sandy | Pu(V) @ 33 days | 4.06 | 30 |
| Subsurface Sandy | Pu(V) @ 33 days | 4.32 | 90 |
| Subsurface Sandy | Pu(V) @ 33 days | 4.69 | 110 |
| Subsurface Sandy | Pu(V) @ 33 days | 4.72 | 130 |
| Subsurface Sandy | Pu(V) @ 33 days | 4.87 | 100 |
| Subsurface Sandy | Pu(V) @ 33 days | 5.10 | 600 |
| Subsurface Sandy | Pu(V) @ 33 days | 5.21 | 4800 |
| Subsurface Sandy | Pu(V) @ 33 days | 5.23 | 3700 |
| Subsurface Sandy | Pu(V) @ 33 days | 5.41 | 4900 |
| Subsurface Sandy | Pu(V) @ 33 days | 5.62 | 3100 |

Table B. 2. Apparent K_d values from plutonium sorption edge experiments

| Sample ID | Sample Description | pH | Apparent K _d |
|-------------------|--------------------|------|-------------------------|
| Subsurface Clayey | Pu(IV) | 1.71 | 90 |
| Subsurface Clayey | Pu(IV) | 2.39 | 410 |
| Subsurface Clayey | Pu(IV) | 2.98 | 410 |
| Subsurface Clayey | Pu(IV) | 3.34 | 350 |
| Subsurface Clayey | Pu(IV) | 3.74 | 670 |
| Subsurface Clayey | Pu(IV) | 4.26 | 1300 |
| Subsurface Clayey | Pu(IV) | 4.81 | 2100 |
| Subsurface Clayey | Pu(IV) | 5.98 | 9000 |
| Subsurface Clayey | Pu(IV) | 5.82 | 6600 |
| Subsurface Clayey | Pu(IV) | 6.68 | 18000 |
| Subsurface Clayey | Pu(IV) | 7.91 | 50000 |
| Subsurface Clayey | Pu(IV) | 7.79 | 42000 |
| Subsurface Clayey | Pu(V) | 1.67 | 4 |
| Subsurface Clayey | Pu(V) | 2.46 | 5 |
| Subsurface Clayey | Pu(V) | 3.50 | 4 |
| Subsurface Clayey | Pu(V) | 4.27 | 6 |
| Subsurface Clayey | Pu(V) | 4.74 | 10 |
| Subsurface Clayey | Pu(V) | 5.30 | 50 |
| Subsurface Clayey | Pu(V) | 5.63 | 50 |
| Subsurface Clayey | Pu(V) | 6.45 | 100 |
| Subsurface Clayey | Pu(V) | 6.02 | 440 |
| Subsurface Clayey | Pu(V) | 7.24 | 2300 |
| Subsurface Clayey | Pu(V) | 7.82 | 2600 |
| Subsurface Clayey | Pu(V) | 8.95 | 6600 |
| Subsurface Clayey | Pu(V) @ 33 days | 1.63 | 60 |
| Subsurface Clayey | Pu(V) @ 33 days | 3.28 | 1400 |
| Subsurface Clayey | Pu(V) @ 33 days | 4.00 | 1600 |
| Subsurface Clayey | Pu(V) @ 33 days | 4.53 | 2300 |
| Subsurface Clayey | Pu(V) @ 33 days | 4.95 | 9300 |
| Subsurface Clayey | Pu(V) @ 33 days | 5.32 | 10000 |
| Subsurface Clayey | Pu(V) @ 33 days | 5.68 | 4700 |
| Subsurface Clayey | Pu(V) @ 33 days | 7.16 | 1600 |
| Subsurface Clayey | Pu(V) @ 33 days | 7.32 | 3700 |
| Subsurface Clayey | Pu(V) @ 33 days | 7.69 | 1300 |
| Subsurface Clayey | Pu(V) @ 33 days | 7.74 | 600 |
| Subsurface Clayey | Pu(V) @ 33 days | 8.89 | 540 |

Table B. 3. Apparent Kd values from plutonium sorption edge experiments

| Sample ID | Sample Description | pH | Apparent Kd |
|----------------|--------------------|------|-------------|
| Surface Clayey | Pu(IV) | 1.78 | 500 |
| Surface Clayey | Pu(IV) | 2.26 | 3200 |
| Surface Clayey | Pu(IV) | 3.21 | 3200 |
| Surface Clayey | Pu(IV) | 3.64 | 3200 |
| Surface Clayey | Pu(IV) | 4.18 | 4900 |
| Surface Clayey | Pu(IV) | 4.63 | 3000 |
| Surface Clayey | Pu(IV) | 6.09 | 1000 |
| Surface Clayey | Pu(IV) | 6.02 | 4600 |
| Surface Clayey | Pu(IV) | 6.83 | 3700 |
| Surface Clayey | Pu(IV) | 7.11 | 3500 |
| Surface Clayey | Pu(IV) | 8.49 | 1300 |
| Surface Clayey | Pu(IV) | 9.95 | 800 |
| Surface Clayey | Pu(V) | 1.68 | 300 |
| Surface Clayey | Pu(V) | 2.44 | 5600 |
| Surface Clayey | Pu(V) | 3.70 | 330 |
| Surface Clayey | Pu(V) | 4.71 | 2500 |
| Surface Clayey | Pu(V) | 5.10 | 2300 |
| Surface Clayey | Pu(V) | 5.68 | 2400 |
| Surface Clayey | Pu(V) | 5.98 | 2600 |
| Surface Clayey | Pu(V) | 6.60 | 1400 |
| Surface Clayey | Pu(V) | 6.89 | 1300 |
| Surface Clayey | Pu(V) | 7.23 | 1300 |
| Surface Clayey | Pu(V) | 8.52 | 1000 |
| Surface Clayey | Pu(V) | 9.69 | 900 |
| Surface Clayey | Pu(V) @ 33 days | 1.68 | 5100 |
| Surface Clayey | Pu(V) @ 33 days | 3.81 | 3300 |
| Surface Clayey | Pu(V) @ 33 days | 4.67 | 13000 |
| Surface Clayey | Pu(V) @ 33 days | 5.67 | 13000 |
| Surface Clayey | Pu(V) @ 33 days | 6.05 | 13000 |
| Surface Clayey | Pu(V) @ 33 days | 6.55 | 8200 |
| Surface Clayey | Pu(V) @ 33 days | 6.81 | 33000 |
| Surface Clayey | Pu(V) @ 33 days | 7.22 | 8200 |
| Surface Clayey | Pu(V) @ 33 days | 7.36 | 33000 |
| Surface Clayey | Pu(V) @ 33 days | 7.49 | 33000 |
| Surface Clayey | Pu(V) @ 33 days | 7.53 | 13000 |
| Surface Clayey | Pu(V) @ 33 days | 9.15 | 3300 |

Table B. 4. Apparent Kd values from plutonium sorption edge experiments

| Sample ID | Sample Description | pH | Apparent Kd |
|---------------|--------------------|-------|-------------|
| Surface Sandy | Pu(IV) | 2.05 | 100 |
| Surface Sandy | Pu(IV) | 2.51 | 330 |
| Surface Sandy | Pu(IV) | 2.65 | 130 |
| Surface Sandy | Pu(IV) | 3.30 | 970 |
| Surface Sandy | Pu(IV) | 3.88 | 590 |
| Surface Sandy | Pu(IV) | 3.98 | 530 |
| Surface Sandy | Pu(IV) | 4.09 | 1100 |
| Surface Sandy | Pu(IV) | 4.13 | 860 |
| Surface Sandy | Pu(IV) | 4.18 | 620 |
| Surface Sandy | Pu(IV) | 4.19 | 260 |
| Surface Sandy | Pu(IV) | 6.73 | 130 |
| Surface Sandy | Pu(IV) | 10.47 | 290 |
| Surface Sandy | Pu(V) | 1.90 | 50 |
| Surface Sandy | Pu(V) | 2.75 | 100 |
| Surface Sandy | Pu(V) | 3.78 | 360 |
| Surface Sandy | Pu(V) | 4.42 | 7 |
| Surface Sandy | Pu(V) | 4.82 | 30 |
| Surface Sandy | Pu(V) | 5.26 | 30 |
| Surface Sandy | Pu(V) | 5.83 | 50 |
| Surface Sandy | Pu(V) | 6.13 | 50 |
| Surface Sandy | Pu(V) | 6.34 | 110 |
| Surface Sandy | Pu(V) | 6.56 | 40 |
| Surface Sandy | Pu(V) | 6.98 | 20 |
| Surface Sandy | Pu(V) | 8.26 | 20 |
| Surface Sandy | Pu(V) @ 6 days | 1.90 | 100 |
| Surface Sandy | Pu(V) @ 6 days | 2.75 | 1100 |
| Surface Sandy | Pu(V) @ 6 days | 3.78 | 1700 |
| Surface Sandy | Pu(V) @ 6 days | 4.42 | 60 |
| Surface Sandy | Pu(V) @ 6 days | 4.82 | 510 |
| Surface Sandy | Pu(V) @ 6 days | 5.26 | 2900 |
| Surface Sandy | Pu(V) @ 6 days | 5.83 | 1400 |
| Surface Sandy | Pu(V) @ 6 days | 6.13 | 1800 |
| Surface Sandy | Pu(V) @ 6 days | 6.34 | 1700 |
| Surface Sandy | Pu(V) @ 6 days | 6.56 | 400 |
| Surface Sandy | Pu(V) @ 6 days | 6.98 | 270 |
| Surface Sandy | Pu(V) @ 6 days | 8.26 | 210 |
| Surface Sandy | Pu(V) @ 33 days | 1.91 | 150 |
| Surface Sandy | Pu(V) @ 33 days | 4.11 | 2900 |

Table B.4 (continuation): Apparent K_d values from plutonium sorption edge experiments

| Sample ID | Sample Description | pH | Apparent K _d |
|---------------|--------------------|------|-------------------------|
| Surface Sandy | Pu(V) @ 33 days | 4.41 | 2200 |
| Surface Sandy | Pu(V) @ 33 days | 4.78 | 1200 |
| Surface Sandy | Pu(V) @ 33 days | 6.61 | 8300 |
| Surface Sandy | Pu(V) @ 33 days | 6.89 | 8300 |
| Surface Sandy | Pu(V) @ 33 days | 7.00 | 5700 |
| Surface Sandy | Pu(V) @ 33 days | 7.36 | 20000 |
| Surface Sandy | Pu(V) @ 33 days | 7.58 | 20000 |
| Surface Sandy | Pu(V) @ 33 days | 7.86 | 20000 |
| Surface Sandy | Pu(V) @ 33 days | 7.00 | 20000 |
| Surface Sandy | Pu(V) @ 33 days | 7.36 | 20000 |

Westinghouse Savannah River Company Document Approval Sheet

 Document No.
 WSRC-TR-2003-00035, Rev 0

| | | | |
|---|---------------------|--------------------------------------|------------------------------|
| Title Plutonium Oxidation State Geochemistry in the SRS Subsurface Environment (U) | | Requested Approval Date 2/28/2003 | |
| Primary Author/Contact D. I. Kaplan | Location 773-43A | Phone No. 5-2363 | Position User ID B7026 |

| | |
|----------------------------|--|
| Organization Code L3230 | Organization (No Abbreviations) Waste Processing Technology |
|----------------------------|--|

| | |
|---|---|
| Other Authors B.A. Powell, R.A. Fjeld, J.T. Coates(Clemson), S.M. Serkiz(WSRC) | Key Words (list 3) Plutonium, oxidation state, pH, soil sediment |
|---|---|

Has an invention disclosure, patent application or copyright application been submitted related to this information? Yes No If yes, date submitted _____

Disclosure No. (If Known) _____ Title _____
 If no, do you intend to submit one? Yes No If yes, projected date _____

| | |
|--|---|
| Information Product Description <input checked="" type="checkbox"/> Technical Report <input type="checkbox"/> Semiannual <input type="checkbox"/> Annual <input type="checkbox"/> Final <input type="checkbox"/> Topical <input type="checkbox"/> Other _____ <input type="checkbox"/> Administrative Report <input type="checkbox"/> Semiannual <input type="checkbox"/> Annual <input type="checkbox"/> Final <input type="checkbox"/> Topical <input type="checkbox"/> Other _____ <input type="checkbox"/> Videotape/Multimedia <input type="checkbox"/> External Web Page URL _____ <input type="checkbox"/> Brochure/Booklet <input type="checkbox"/> Procedure/User Guide <input type="checkbox"/> Drawing <input type="checkbox"/> Software Package (for submission to ESTSC) | <input type="checkbox"/> Journal Article Journal Name _____ <input type="checkbox"/> Book/Book Chapter Book Name _____ Conference Submission* <input type="checkbox"/> Abstract <input type="checkbox"/> Conf. Paper <input type="checkbox"/> Conf. Proceeding <input type="checkbox"/> Slides/poster/display <input type="checkbox"/> Other _____ *Conference Title _____ *Conference Location (City, State, Country) _____ *Conference Dates _____ m/d/y thru _____ m/d/y *Conference Sponsor _____ |
|--|---|

References
 Approved for Release/Publicly Available Included as Attachment(s) Routing Concurrently Other _____ STI Concurrence *ja*

I understand that for the information in this material to be given external distribution, approvals by both WSRC and, as appropriate, DOE-SR are required. Distribution (verbally or published) must be in accordance with policies set forth in WSRC management requirements and procedures (MRP 3.25) and in DOE-SR orders, and the content of the external distribution must be limited to that actually approved.

D. I. Kaplan
 Author's Name (Print)

 Author's Signature

 Date

Approvals by Author's Organization

| | | |
|--|---|-------|
| Derivative Classifier <i>Enfuetzshut</i> | Classification <i>U</i> | Topic |
| Intended Distribution <input checked="" type="checkbox"/> Unlimited (release to public) <input type="checkbox"/> Limited (see explanation) | Explanation for Limited Dist. <input type="checkbox"/> Site Use Only <input type="checkbox"/> Corporate/University Partner <input type="checkbox"/> Other DOE facility(ies) only <input type="checkbox"/> Other _____ | |

I understand and have considered whether any potential intellectual property rights (patents, copyrights, etc., in accordance with MP 1.09 and MRP 1.07) or any contractual barriers (CRADAs, Work for Others, etc.) may be involved before authorizing that this document be proposed for public release. If any concerns were identified, these have been discussed and resolved with General Counsel.

B. T. Butcher
 Manager's Name (Print)

B.T. Butcher
 Manager's Signature

2/5/03
 Date

| WSRC Classification Office Reviews | WSRC Classification Officer/ Analyst |
|--|---|
| Classification/EC/OPSEC <input type="checkbox"/> Overall <input type="checkbox"/> S <input type="checkbox"/> C <input type="checkbox"/> UCNI <input checked="" type="checkbox"/> U <input checked="" type="checkbox"/> U <input type="checkbox"/> Title <input type="checkbox"/> S <input type="checkbox"/> C <input type="checkbox"/> UCNI <input checked="" type="checkbox"/> U <input checked="" type="checkbox"/> U <input type="checkbox"/> Export Control Concerns <input type="checkbox"/> Yes <input checked="" type="checkbox"/> No <input type="checkbox"/> OPSEC Concerns <input type="checkbox"/> Yes <input checked="" type="checkbox"/> No | Name T.R. COUGHENOUR CLASSIFICATION ANALYST Signature <i>T.R. Coughenour</i> Date <u>2/5/13/03</u> Comments _____ |

| Export Control Review (If different than above) | OPSEC Reviewer (If different than above) |
|---|---|
| Name _____ Signature _____ Date <u>2/14/03</u> <div style="border: 2px solid red; padding: 5px; display: inline-block; color: red; font-weight: bold;"> DOES NOT CONTAIN EXPORT CONTROLLED INFORMATION </div> | Name <i>B.L. Shankle</i> Signature <i>B.L. Shankle</i> Date <u>2/14/03</u> |

| Computer Security | STI Program Use Only |
|---|--|
| Signature R. L. Shankle - WSRC EC/ Technology Control Officer Date _____ | OSTI Subj. Category No. <u>SC-54</u> Routing <u>CLASS/EC/opSec/DOE</u> |

Gregg Layne

To: STI@SRS
cc:
Subject: WSRC-TR-2003-00035

02/24/2003 11:08 AM

CI Approved.


Gregg Layne
CI Officer
OCI-SRS

----- Forwarded by Gregg Layne/DOE/Srs on 02/24/03 11:08 AM -----

STI
Sent by: Sharon Lybrand

To: Office of Counterintelligence@Srs
cc:
Subject: WSRC-TR-2003-00035

02/18/03 01:51 PM

For STI review. Click here to review document  and then **FORWARD** back to **STI @ Srs**.

Thank you.

Scientific and Technical Information
703-43A



WSRC-TR-2003-00035
MSD-STI-2003-00282

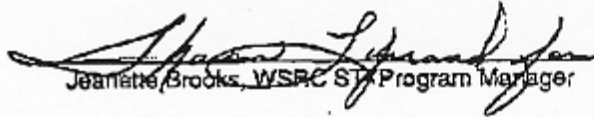
February 18, 2003

Ms. W. F. Perrin, Technical Information Officer
U. S. Department of Energy - Savannah River Operations Office

Dear Ms. Perrin:

REQUEST FOR APPROVAL TO RELEASE SCIENTIFIC/TECHNICAL INFORMATION

The attached document is submitted for classification and technical approvals for the purpose of external release. Please complete Part II of this letter and return the letter to the undersigned by 3/28/2003. The document has been reviewed for classification and export control by a WSRC Classification staff member and has been determined to be Unclassified.


Jeanette Brooks, WSRC STI Program Manager

I. DETAILS OF REQUEST FOR RELEASE

Document Number: WSRC-TR-2003-00035

Author's Name: D. I. Kaplan

Location: 773-43A

Phone 5-2363

Department: Waste Processing Technology

Document Title: Plutonium Oxidation State Geochemistry in the SRS Subsurface Environment

Presentation/Publication:

Meeting/Journal:

N/A

Location:

Meeting Date:

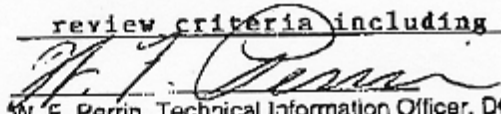
DSTI Report table

II. DOE-SR ACTION

Date Received by TIO 02/18/2003

- Approved for Release
 Approved Upon Completion of Changes
 Approved with Remarks
 Not Approved
 Revise and Resubmit to DOE-SR

Remarks: So long as release is not precluded by the latest review criteria including computer security.


W. F. Perrin, Technical Information Officer, DOE-SR

4/16/03
Date

US DEPARTMENT OF ENERGY
ANNOUNCEMENT OF U. S. DEPARTMENT OF ENERGY (DOE)
SCIENTIFIC AND TECHNICAL INFORMATION (STI)

RECORD STATUS (select one):

New Revised Data Revised STI Product

Part I: STI PRODUCT DESCRIPTION

A. STI PRODUCT TYPE (select one)

1. Technical Report

a. Type: Topical Semiannual Annual Final Other (specify) _____
b. Reporting Period (mm/dd/yyyy) _____ thru _____

2. Conference

a. Product Type: Conference Proceedings Conference Paper or Other (abstracts, excerpts, etc.) _____
b. Conference Information (title, location, date) _____

3. Software Manual (The actual software package should be made available simultaneously. Follow instructions provided with ESTSC F 1 and ESTSC F 2.)

4. Journal Article

a. Type: Announcement citation only Preprint Postprint
b. Journal Name _____
c. Volume _____ d. Issue _____ e. Serial identifier (e.g., ISSN or CODEN) _____

5. S&T Accomplishment Report

6. Book

7. Patent Application

a. Date Filed (mm/dd/yyyy) ____/____/____
b. Date Priority (mm/dd/yyyy) ____/____/____
c. Patent Assignee _____

8. Thesis/Dissertation

B. STI PRODUCT TITLE Plutonium Oxidation State Geochemistry in the SRS Subsurface Environment

C. AUTHOR(s) D. I. Kaplan
E-mail Address(es): _____

D. STI PRODUCT IDENTIFIER

1. Report Number(s) WSRC-TR-2003-00035
2. DOE Contract Number(s) DE-AC09-96SR18500
3. R&D Project ID(s) _____
4. Other Identifying Number(s) _____

E. ORIGINATING RESEARCH ORGANIZATION Savannah River Site

F. DATE OF PUBLICATION (mm/dd/yyyy) 4/16/2003

G. LANGUAGE (if non-English) English

(Grantees and Awardees: Skip to Description/Abstract section at the end of Part I)

H. SPONSORING ORGANIZATION _____

I. PUBLISHER NAME AND LOCATION (if other than research organization) _____

Availability (refer requests to [if applicable])

J. SUBJECT CATEGORIES (list primary one first) 54

Keywords Plutonium, oxidation, state, pH, soil sediment

K. DESCRIPTION/ABSTRACT

The environmental mobility of plutonium (Pu) is profoundly influenced by its oxidation state. Pu(IV) is 2 to 3 orders of magnitude slower moving than Pu(V) or Pu(VI). For performance and risk assessment calculations, Pu waste has been assumed to exist in the less mobile reduced form, Pu(IV). Recent work on the chemistry of PuO₂, by Haschke and others (2000) has shown that PuO₂ surface is oxidized in the presence of water, forming as much as 27 percent Pu(VI). This has significant implications to existing SRS programs (including the Pu Immobilization, ILLW disposal and Remediation to the Old Burial Ground) and future SRS programs (including MOX and pit disassembly). The hypothesis of this Strategic Research and Development study was that even if Pu(VI) is produced in the waste form as suggested by Haschke and others (2000), it will be quickly reduced to Pu(IV) in the SRS subsurface environment. The overall objective of the research was to test this hypothesis through laboratory and computational studies conducted by Savannah River Technology Center and Clemson University scientist.

US DEPARTMENT OF ENERGY
ANNOUNCEMENT OF U. S. DEPARTMENT OF ENERGY (DOE)
SCIENTIFIC AND TECHNICAL INFORMATION (STI)

DOE F 241.1 (p. 2 of 2)

Part II: STI PRODUCT MEDIA/FORMAT and LOCATION/TRANSMISSION

A. MEDIA/FORMAT INFORMATION

- Medium of STI product is: Paper Electronic document Computer medium Audiovisual material
- Size of STI product _____
- File format:
 - If electronic document is posted at site, indicate: html pdfn sgml xml
 - If electronic document is transmitted to OSTI, indicate: html pdfn pdfi msword
 TIFFG4 WP—indicate Version (5.0 or greater) _____ platform/operating system _____
 MS Word—indicate Version (5.0 or greater) _____ platform/operating system _____ Postscript
- If computer medium or audiovisual material:
 - Quantity/type (specify) _____
 - Machine compatibility (specify) _____
 - Sound: (yes)
 - Color (yes)
 - Tables/Graphics (yes)
 - Other information about product format a user needs to know: _____

B. LOCATION/TRANSMISSION INFORMATION

- STI Product is available at site: Unique URL (of specific STI Product <http://www.srs.gov/general/pubs/fulltext/tr2003035/tr2003035.pdf>
- STI Product is being transmitted to OSTI: **5.pdf**
 - Electronically via FTP
 - Via Mail or shipment (e.g., Federal Express) (Paper products, electronic documents on CD-ROM, diskettes, videocassettes, etc.)
- Information Product Filename (of transmitted electronic format) _____

C. ADDITIONAL INFORMATION (concerning media/format or location/transmission; for OSTI internal use only): _____

(Grantees and Awardees: Skip to Contact section at the end of Part III)

Part III: STI PRODUCT REVIEW? RELEASE INFORMATION

A. ACCESS LIMITATION

1. **Unlimited Announcement** (available to U.S. and non-U.S. public)
2. **OpenNet** (use OpenNet guidance for below)
- If additional source other than making it available through NTIS:
 - Accession Number _____
 - Document Location _____
 - Field Office Acronym _____
 - Declassification date (mm/dd/yyyy) ___/___/___
 - Declassification Status:
 Declassified Sanitized Never classified
 - OpenNet Document Type _____
 - OpenNet Document Keywords _____
 - OpenNet Addressee _____
3. **U.S. Dissemination Only**
4. **Copyrighted material** Are there any restrictions based on copyright? yes no. If yes, list the restrictions _____
5. **Small Business Innovation Research (SBIR)** Release date (mm/dd/yyyy) _____
6. **Small Business Technology Transfer (STTR)** Release date (mm/dd/yyyy) _____
7. **Proprietary/Trade Secret**
8. **Patent Pending**
9. **Protected data** CRADA Other (specify) _____ Release date (mm/dd/yyyy) _____
10. **Official Use Only (OUO)**
11. **Program-Directed Special Handling** (specify) _____
12. **Export Control/ITAR/EAR**
13. **Unclassified Controlled Nuclear Information (UCNI)** _____
14. **Classified** Classification Level/Category of:
 - This form **U** _____
 - The STI Product **Unclassified** _____
15. **Other information relevant to access** (specify; for OSTI internal use only) _____

B. OTHER (information useful to include in published announcement record which is not suited for any other field on this form)

C. CONTACT AND RELEASING OFFICIAL

- Contact (if appropriate, the organization or site contact to include in published citations who would receive any external questions about the content of the STI Product or the research information contained therein) **Jeanette Brooks, Manager STI Program & Site Support**
Name and/or Position _____
E-mail _____ Phone **(803) 725-2500**
Organization **Westinghouse Savannah River Company**
- Releasing Official I verify that all necessary reviews have been completed (e.g. Patent, Copyright, ECI, UCNI, etc.)
Released by (name) **Jeanette Brooks** Date (mm/dd/yyyy) **4/16/2003**
E-Mail _____ Phone _____ (803) 725-2500