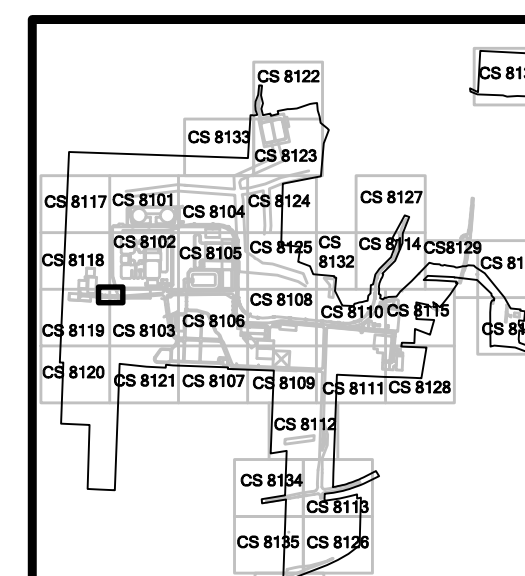


DATE	NO.	REVISIONS	BY
9/15/11	1	EXCESS EARTHWORK REDUCTION AND L&D COMMENTS	DFC
11/12/10	0	INITIAL SUBMISSION	DFC

ALL DIMENSIONS MUST BE VERIFIED BY CONTRACTOR AND REVISIONS MUST BE MADE IMMEDIATELY BEFORE PROCEEDING WITH THE WORK.



BELL BEND NUCLEAR POWER PLANT
EROSION AND SEDIMENTATION CONTROL PLANS
BRIDGE CONSTRUCTION E+S, BRIDGE NO. 4
PPL BELL BEND, LLC
 SALEM TOWNSHIP, PENNSYLVANIA
 38 BOMBAY LANE, SUITE 2
 BETHLEHEM, PA 18020

100 N. Wilkes-Barre Boulevard
 Wilkes-Barre, PA 18702 (570) 824-2200

ALL DOCUMENTS PREPARED BY PENNONI ASSOCIATES ARE INSTRUMENTED BY LICENSED PROFESSIONALS. THE PROJECT THEY ARE NOT INTENDED OR REPRESENTED TO BE SUITABLE FOR REUSE IN ANY OTHER PROJECT OR EXTENSION OF THE PROJECT OR ON ANY OTHER PROJECT. ANY REUSE WITHOUT WRITTEN APPROVAL OR PERMISSION BY PENNONI ASSOCIATES FOR THE SPECIFIC PURPOSE INTENDED WILL BE AT USER'S SOLE RISK AND WITHOUT LIABILITY OR LEGAL EXPOSURE TO PENNONI ASSOCIATES; AND OWNER SHALL INDEMNIFY AND HOLD HARMLESS PENNONI ASSOCIATES FROM ALL CLAIMS, DAMAGES, LOSSES AND EXPENSES ARISING OUT OF OR RESULTING THEREFROM.

JOB NO.	PPLS0902
SHEET	58 OF 75

SCALE	DRAWING NO.
1"=50'	
DRAWN BY	
LGB	
DATE	
9/15/2011	CS8203
APPROVED	
JFM	

CONSTRUCTION SEQUENCE

ALL EARTH DISTURBANCE ACTIVITIES SHALL PROCEED IN ACCORDANCE WITH THE FOLLOWING SEQUENCE. EACH STAGE WILL BE COMPLETED IN COMPLIANCE WITH CHAPTER 102 REGULATIONS BEFORE ANY FOLLOWING STAGE IS INITIATED. CLEARING AND GRUBBING SHALL BE LIMITED TO ONLY THOSE AREAS DESCRIBED IN EACH STAGE.

AT LEAST 7 DAYS BEFORE STARTING ANY EARTH DISTURBANCE ACTIVITIES, THE OPERATOR SHALL INVITE ALL CONTRACTORS INVOLVED IN THOSE ACTIVITIES, THE LAND OWNER, ALL APPROPRIATE MUNICIPAL OFFICIALS, THE EROSION AND SEDIMENT CONTROL PLAN PREPARER, AND A REPRESENTATIVE FROM THE LUZERNE CONSERVATION DISTRICT TO A PRE-CONSTRUCTION MEETING. ALSO, AT LEAST 3 WORKING DAYS BEFORE STARTING ANY EARTH DISTURBANCE ACTIVITIES, ALL CONTRACTORS INVOLVED SHALL NOTIFY THE PENNSYLVANIA ONE CALL SYSTEM, INC. AT 1-800-242-1776 FOR BURIED UTILITY LOCATIONS.

BEFORE IMPLEMENTING ANY REVISIONS TO THE APPROVED EROSION AND SEDIMENT CONTROL PLAN OR REVISIONS TO OTHER PLANS WHICH MAY AFFECT THE EFFECTIVENESS OF THE APPROVED E&S CONTROL PLAN, THE OPERATOR MUST RECEIVE APPROVAL OF THE REVISIONS FROM THE LUZERNE CONSERVATION DISTRICT.

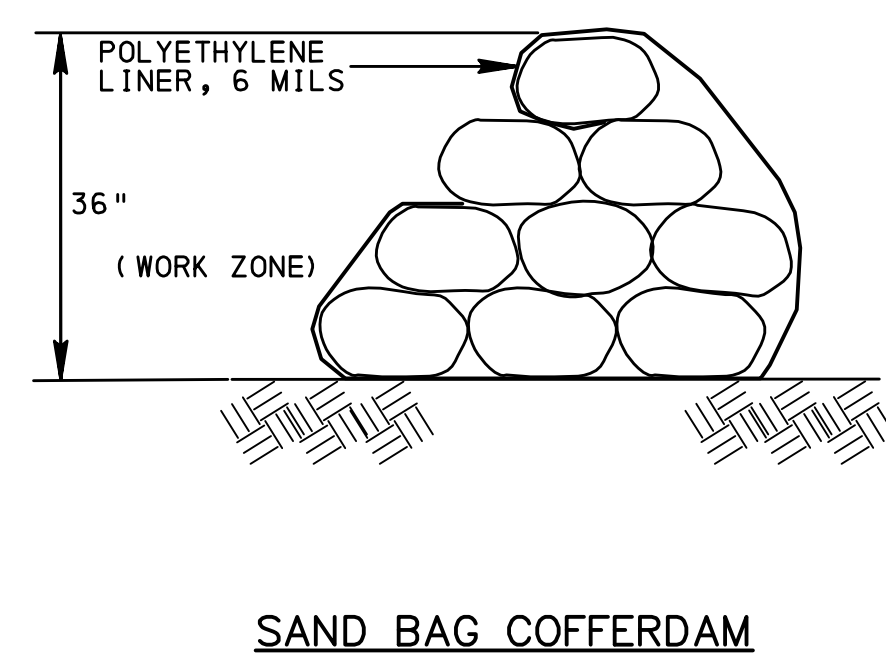
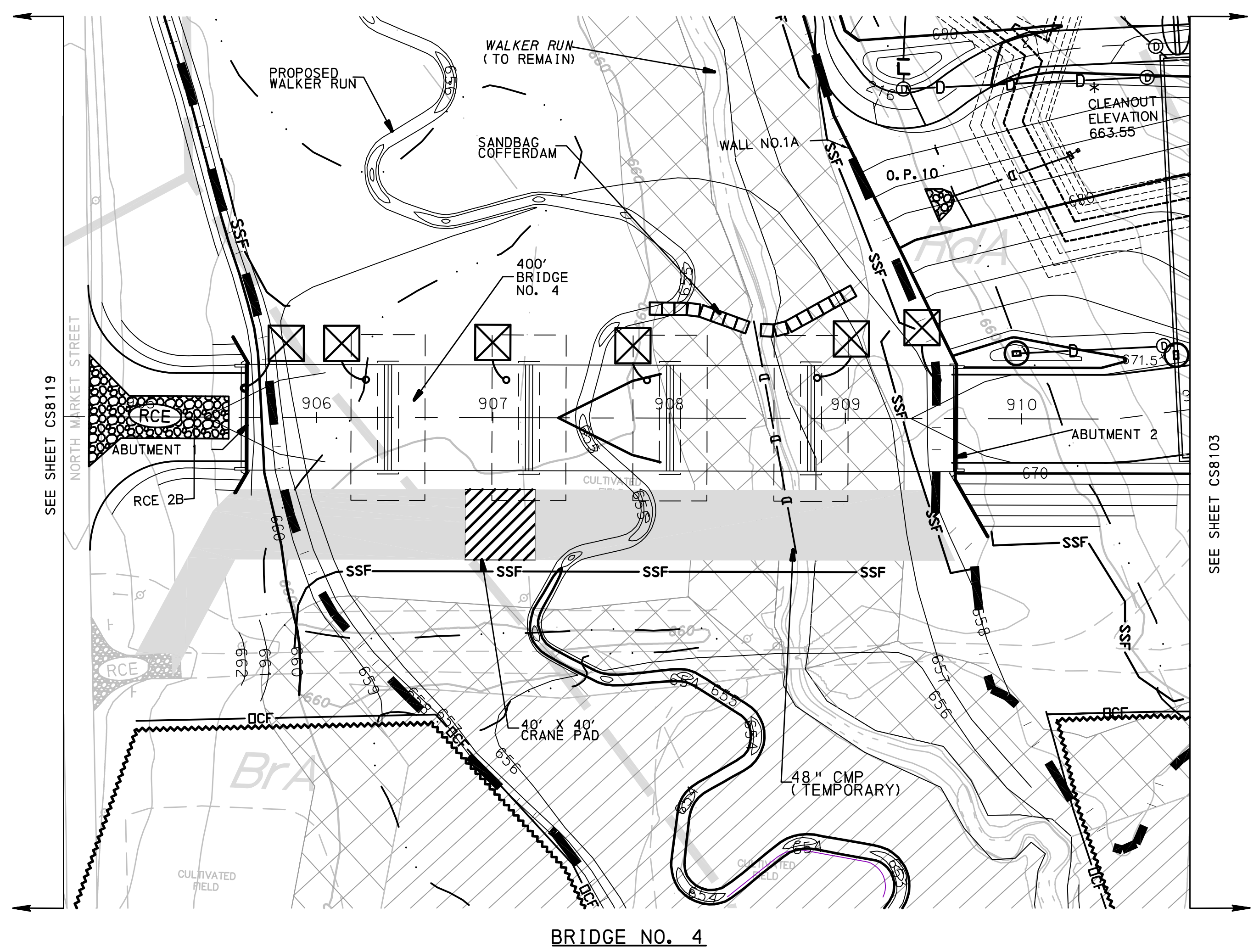
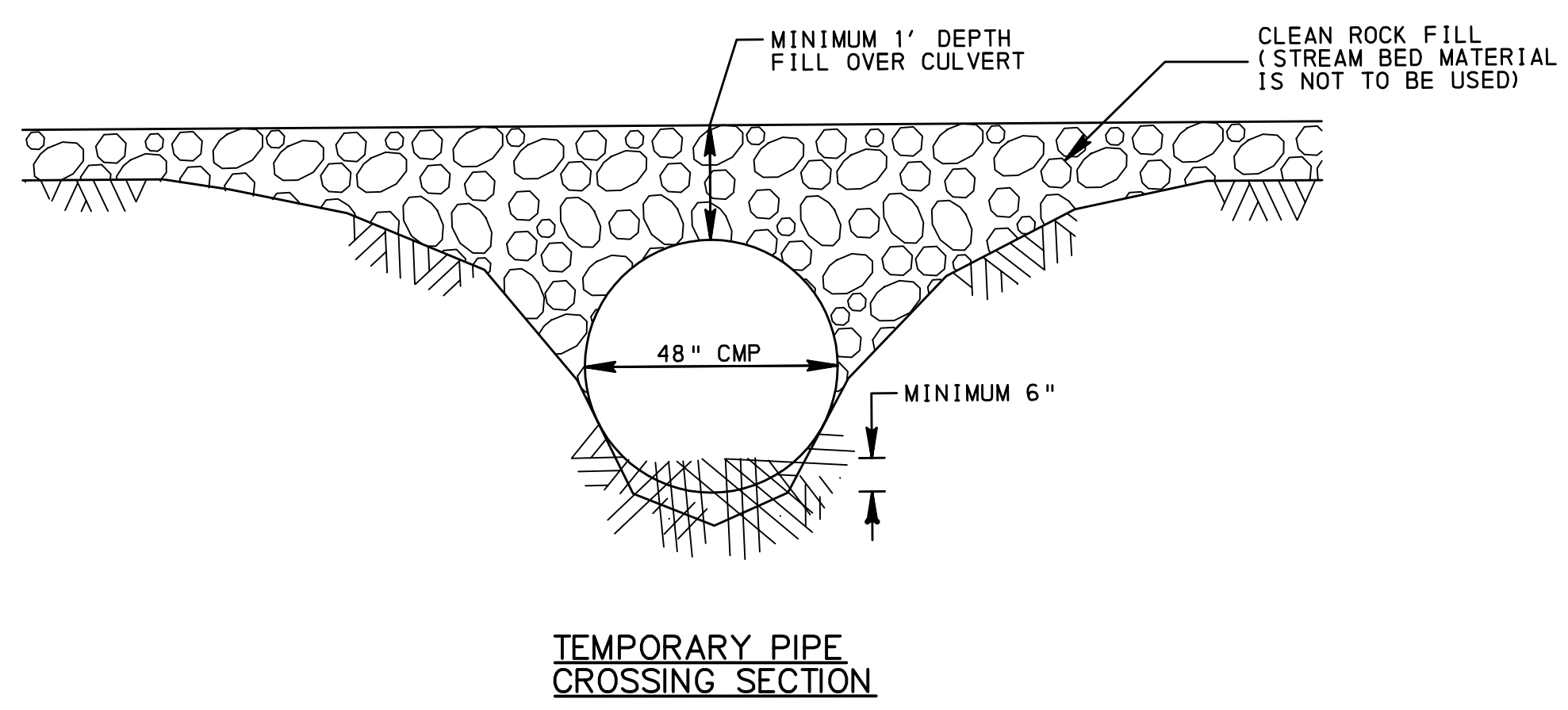
AT LEAST 7 DAYS BEFORE STARTING ANY TREE CLEARING ACTIVITIES BETWEEN APRIL 1 AND NOVEMBER 15 NOTIFY THE U.S. FISH AND WILDLIFE SERVICE (USFWS). TREE CLEARING DURING THIS PERIOD WILL BE LIMITED TO TREES WITH A DIAMETER AT BREAST HEIGHT LESS THAN 5 INCHES DUE TO POTENTIAL IMPACT TO FORAGING INDIANA BATS, OR IN ACCORDANCE WITH FINAL BAT MANAGEMENT PLAN AS APPROVED BY USFWS.

THE OPERATOR SHALL REMOVE FROM THE SITE, RECYCLE, OR DISPOSE OF ALL BUILDING MATERIALS AND WASTES IN ACCORDANCE WITH THE DEPARTMENT'S SOLID WASTE MANAGEMENT REGULATIONS AT 25 PA CODE 260.1 ET SEQ. AND 287.1 ET SEQ.

BEFORE DISPOSING OF SOIL OR RECEIVING BORROW FOR THE SITE, THE OPERATOR MUST ASSURE THAT EACH SPOIL OR BORROW AREA HAS AN EROSION AND SEDIMENT CONTROL PLAN APPROVED BY THE LUZERNE CONSERVATION DISTRICT, AND WHICH IS BEING IMPLEMENTED AND MAINTAINED ACCORDING TO CHAPTER 102 REGULATIONS. THE OPERATOR SHALL ALSO NOTIFY THE LUZERNE CONSERVATION DISTRICT IN WRITING OF ALL RECEIVING SPOIL AND BORROW AREAS WHEN THEY HAVE BEEN IDENTIFIED.

THE GENERAL SEQUENCE OF EARTHMOVING ACTIVITIES FOR THE CONSTRUCTION OF BRIDGE #4 IS AS FOLLOWS:

- FIELD-MARK THE LIMITS OF DISTURBANCE.
- INSTALL ROCK CONSTRUCTION ENTRANCE AS SHOWN ON PLANS.
- INSTALL ALL PERIMETER CONTROLS: SILT FENCE AND WETLAND BARRIER FENCE.
- CLEAR AND GRUB AREAS OF CONSTRUCTION WITHIN THE LIMITS OF DISTURBANCE.
- INSTALL TEMPORARY WETLAND CROSSING MATTING.
- CONSTRUCT CRANE PAD.
- PERFORM LOCAL EXCAVATIONS FOR ABUTMENT 2. DEWATER EXCAVATION SITE WITH PUMPED WATER FILTER BAGS. MULTIPLE BAGS MAY BE NEEDED FOR EACH EXCAVATION SITE DUE TO HIGH WATER TABLE AND WETLAND FLOW.
- IMMEDIATELY GRADE DISTURBED AREA SURROUNDING ABUTMENT 2 AND INSTALL EROSION CONTROL MATTING ON ALL SLOPES GREATER THAN 3:1.
- PERMANENTLY SEED ALL AREAS DISTURBED BY THE CONSTRUCTION. AN AREA SHALL BE CONSIDERED TO HAVE ACHIEVED FINAL STABILIZATION WHEN IT HAS A MINIMUM UNIFORM 70% PERENNIAL VEGETATIVE COVER OR OTHER NON-VEGETATIVE COVER WITH A DENSITY SUFFICIENT TO RESIST ACCELERATED SURFACE EROSION AND SUBSURFACE CHARACTERISTICS SUFFICIENT TO RESIST SLIDING AND OTHER MOVEMENT.
- CONTINUE INSTALLING PIERS AND DEWATERING EXCAVATION SITE WITH PIER 4, WORKING WEST TO ABUTMENT 1. REPLACE WETLAND CROSSING MATTING AS NEEDED.
- AFTER ABUTMENT #1 IS STABLE AND SEEDING, REMOVE WETLAND CROSSING MATTING AND RESTORE WETLANDS WITH THE FOLLOWING PROCESS:
 - DE-COMPACT WETLAND SOIL USING A FOUR-FOOT RIPPING HOOK MOUNTED ON A TRACK HOE.
 - VERIFY THAT AT LEAST 8-INCHES OF SUITABLE TOPSOIL IS PRESENT IN THE DISTURBED WETLAND AREA.
 - SEED THE DISTURBED AREA WITH THE FLOODPLAIN SEED MIXTURE, AS SPECIFIED FOR THE RIVER MITIGATION AREA AT A RATE OF 20 LBS/ACRE.
- REMOVE PERIMETER CONTROLS INCLUDING SILT FENCE AND WETLAND BARRIER.
- STABILIZE THE AREAS WHERE BMPs WERE LOCATED. DISPOSE OF ANY SEDIMENT AS OUTLINED IN THE MAINTENANCE NOTES.



GENERAL NOTES

- IT IS THE RESPONSIBILITY OF THE CONTRACTOR TO DESIGN AND IMPLEMENT A CRANE PAD THAT WILL SUPPORT AN APPROPRIATE CRANE FOR THE BRIDGE SUPERSTRUCTURE INSTALLATION.
- AREAS WHERE TEMPORARY CRANE PADS DISTURB EXISTING WETLANDS SHALL BE RESTORED AFTER BRIDGE INSTALLATION AS FOLLOWS:
 - EXCAVATE ROCK BASE AND REMOVE GEOTEXTILE SEPARATION FABRIC.
 - DE-COMPACT WETLAND SOIL USING A FOUR-FOOT RIPPING HOOK MOUNTED ON A TRACK HOE. THE CRANE PAD SHALL BE REMOVED IN SECTIONS TO ALLOW EQUIPMENT TO WORK FROM THE PAD SURFACE AND REACH INTO THE DISTURBED WETLAND AREA TO AVOID ADDITIONAL TRAFFIC IN THE DISTURBED OR ADJACENT WETLANDS.
 - VERIFY THAT AT LEAST 8-INCHES OF SUITABLE TOPSOIL IS PRESENT IN THE DISTURBED WETLAND AREA. IF SUFFICIENT TOPSOIL IS NOT PRESENT, UNSUITABLE SOIL SHALL BE REMOVED AND REPLACED WITH AVAILABLE TOPSOIL AMENDED WITH LEAF COMPOST OR OTHER SUITABLE ORGANIC MATERIAL AT A RATIO OF 2 PARTS TOPSOIL TO 1-PART COMPOST. FINAL GRADE SHALL BE CONSISTENT WITH THE FINAL GRADE OF THE SURROUNDING WETLAND.
 - SEED THE DISTURBED AREA WITH THE FLOODPLAIN SEED MIXTURE, AS SPECIFIED FOR THE RIVER MITIGATION AREA (LSI PLANS DATED 10-29-10) AT A RATE OF 20 LBS/ACRE.
- CRANE PAD MAY BE RELOCATED ALONG ENTIRE SOUTH SIDE OF BRIDGE #4. RESTORATION OF WETLAND AREAS MUST BE COMPLETED IMMEDIATELY AFTER THE CRANE PAD IS REMOVED.
- THE TEMPORARY CMP SHOULD BE INSTALLED 6" BELOW EXISTING CHANNEL BED.
- TEMPORARY CMP SLOPE SHOULD MATCH EXISTING CHANNEL SLOPE.
- INSTALL SCOUR CONTROLS AT EACH END OF THE TEMPORARY CMP.

EROSION & SEDIMENTATION LEGEND

- 700--- TEMPORARY PROPOSED CONTOUR LINE (10')
- 270--- TEMPORARY PROPOSED CONTOUR LINE (2')
- NPDES BOUNDARY
- ~~~~~ LIMIT OF DISTURBANCE/ CONSTRUCTION
- SF-18 18" SILT FENCE
- SF-30 30" SILT FENCE
- SSF SUPER SILT FENCE
- ROCK FILTER
- FAIRCLOTH SKIMMER
- INLET FILTER BAG PROTECTION
- OUTLET PROTECTION
- RCE ROCK CONSTRUCTION ENTRANCE
- OCF ORANGE CONSTRUCTION FENCE
- TEMPORARY WETLAND CROSSING MATTING
- CRANE PAD
- PUMPED WATER FILTER BAG
- PUMP AND HOSE
- SANDBAG COFFERDAM
- WETLANDS BUFFER
- WETLANDS

PROJECT: PPLS0902-04 Bell Bend Land Development/EROSION/CS8203/03/11