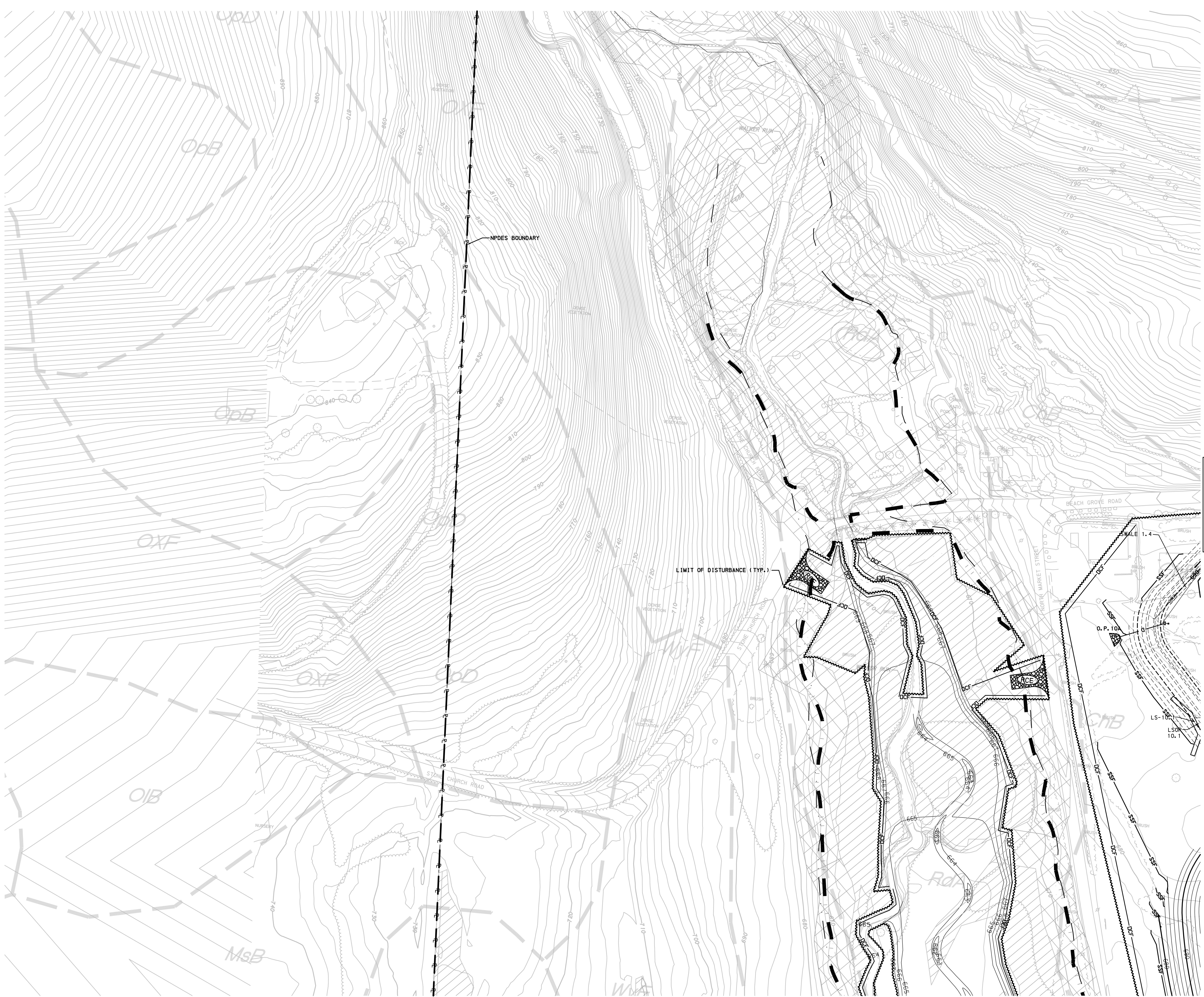
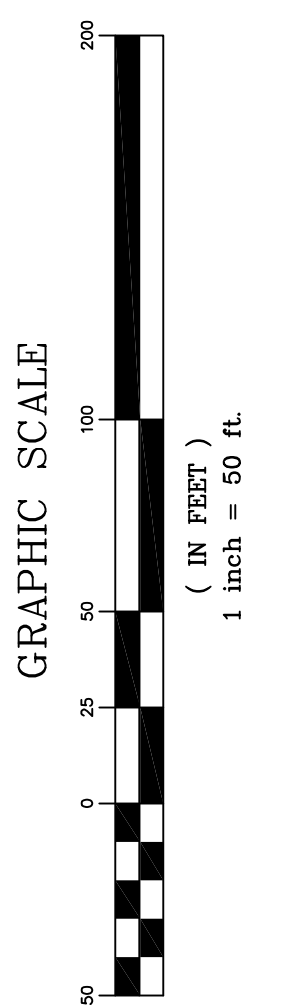


S:\PROJECTS\2011\09\20110902-001 Bell Bend Land Development\NORTH\CS8117.dwg  
 Date: 9/15/11  
 User: jfm



SEE SHEET CS8118

SEE SHEET CS8101



**Pennoni Associates Inc.**

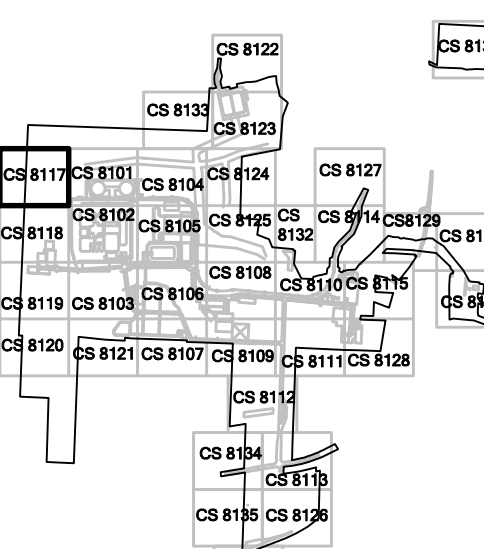
**Engineers • Surveyors • Planners • Landscape Architects**

SCALE	1"=50'	DRAWING NO.	CS8117
DRAWN BY	MLF		
DATE	9/15/2011		
APPROVED	JFM		

JOB NO.	PPLS0902
SHEET	30 OF 75

ALL DOCUMENTS PREPARED BY PENNONI ASSOCIATES ARE INSTRUMENTED BY STATE IN RESPECT OF THE PROJECT. THEY ARE NOT INTENDED OR REPRESENTED TO BE SUITABLE FOR REUSE BY OWNER OR OTHERS OR EXTENSIONS OF THE PROJECT OR ON ANY OTHER PROJECT. ANY REUSE WITHOUT WRITTEN PERMISSION OR ASSURANCE BY PENNONI ASSOCIATES FOR THE SPECIFIC PURPOSE INTENDED WILL BE AT OWNER'S SOLE RISK AND WITHOUT LIABILITY OR LEGAL EXPOSURE TO PENNONI ASSOCIATES. OWNER SHALL INDEMNIFY AND HOLD HARMLESS PENNONI ASSOCIATES FROM ALL CLAIMS, DAMAGES, LOSSES AND EXPENSES ARISING OUT OF OR RESULTING THEREFROM.

**BELL BEND NUCLEAR POWER PLANT**  
 EROSION AND SEDIMENTATION CONTROL PLANS  
 SALEM TOWNSHIP, PENNSYLVANIA  
**PPL BELL BEND, LLC**  
 36 BOMBAY LANE, SUITE 2  
 BETHLEHEM, PA 18023



ALL DIMENSIONS MUST BE VERIFIED BY CONTRACTOR ASSUMING ALL DIMENSIONS ARE AS SHOWN. DISCREPANCIES BEFORE PROCEEDING WITH THE WORK.

DATE	NO.	REVISIONS	BY
9/15/11	1	EXCESS EARTHWORK REDUCTION AND LCD COMMENTS	DFC
11/12/10	0	INITIAL SUBMISSION	DFC

