



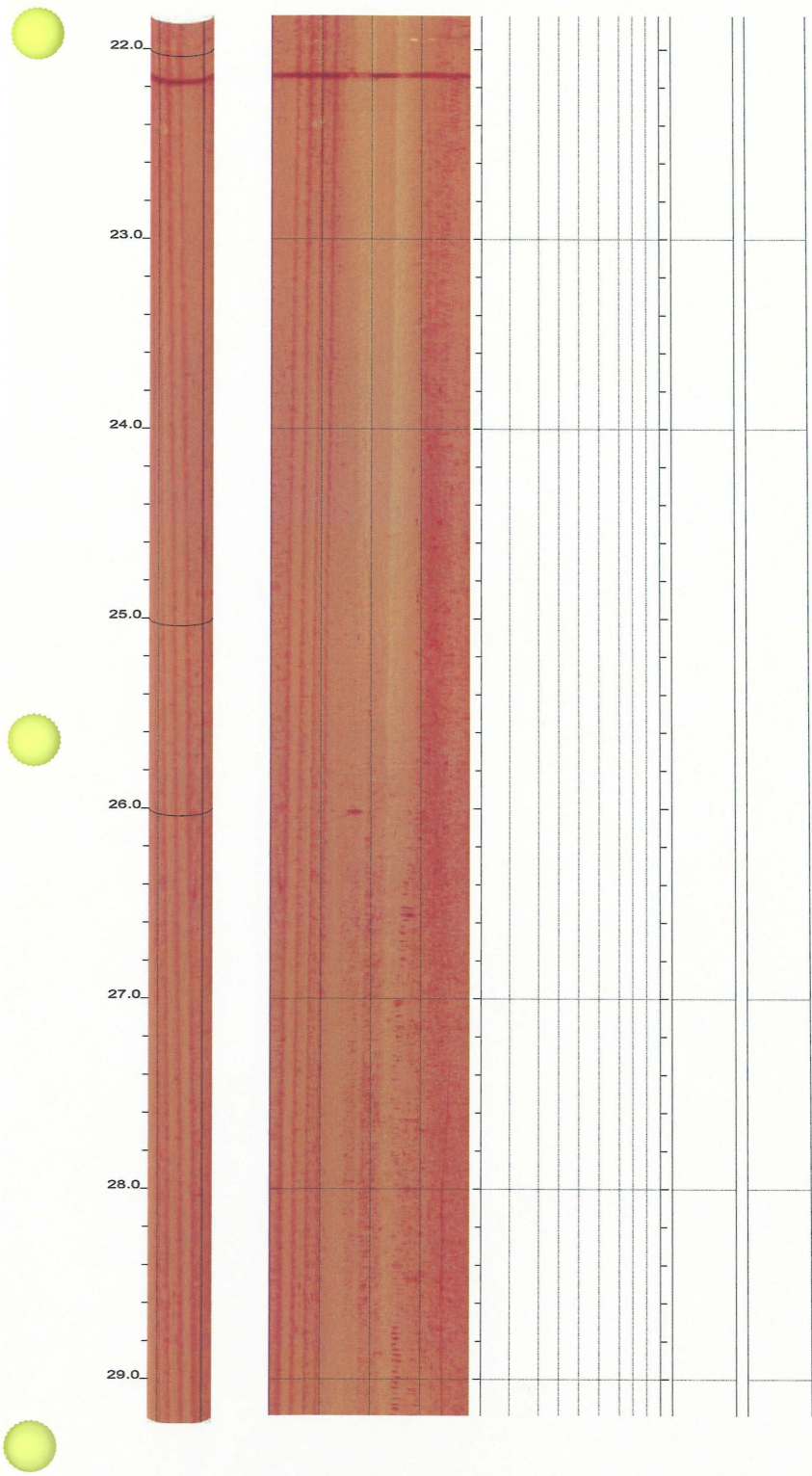
Admitted: 10/12/2011
 Rejected:

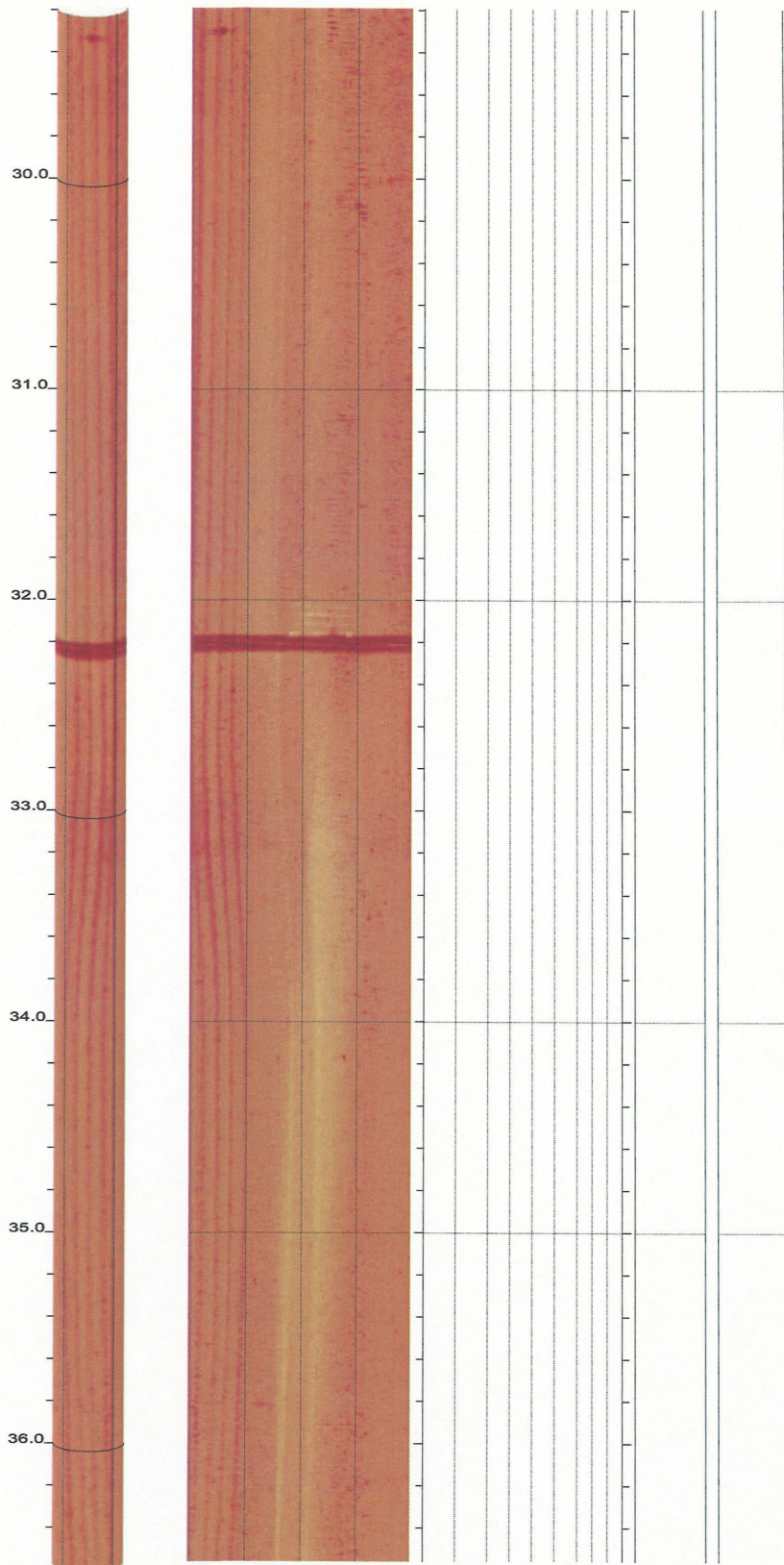
Withdrawn:
 Stricken:

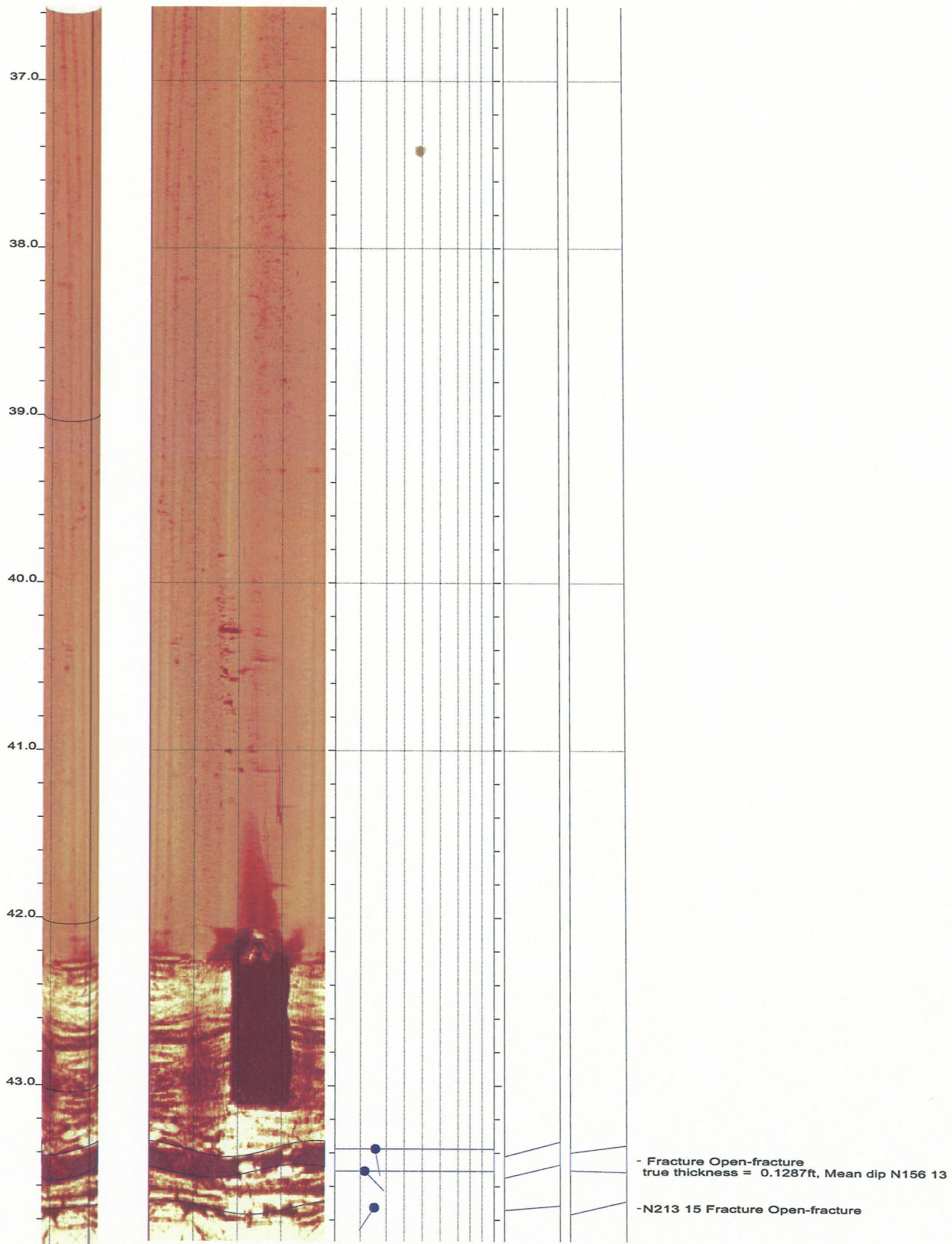
NRC0001AK

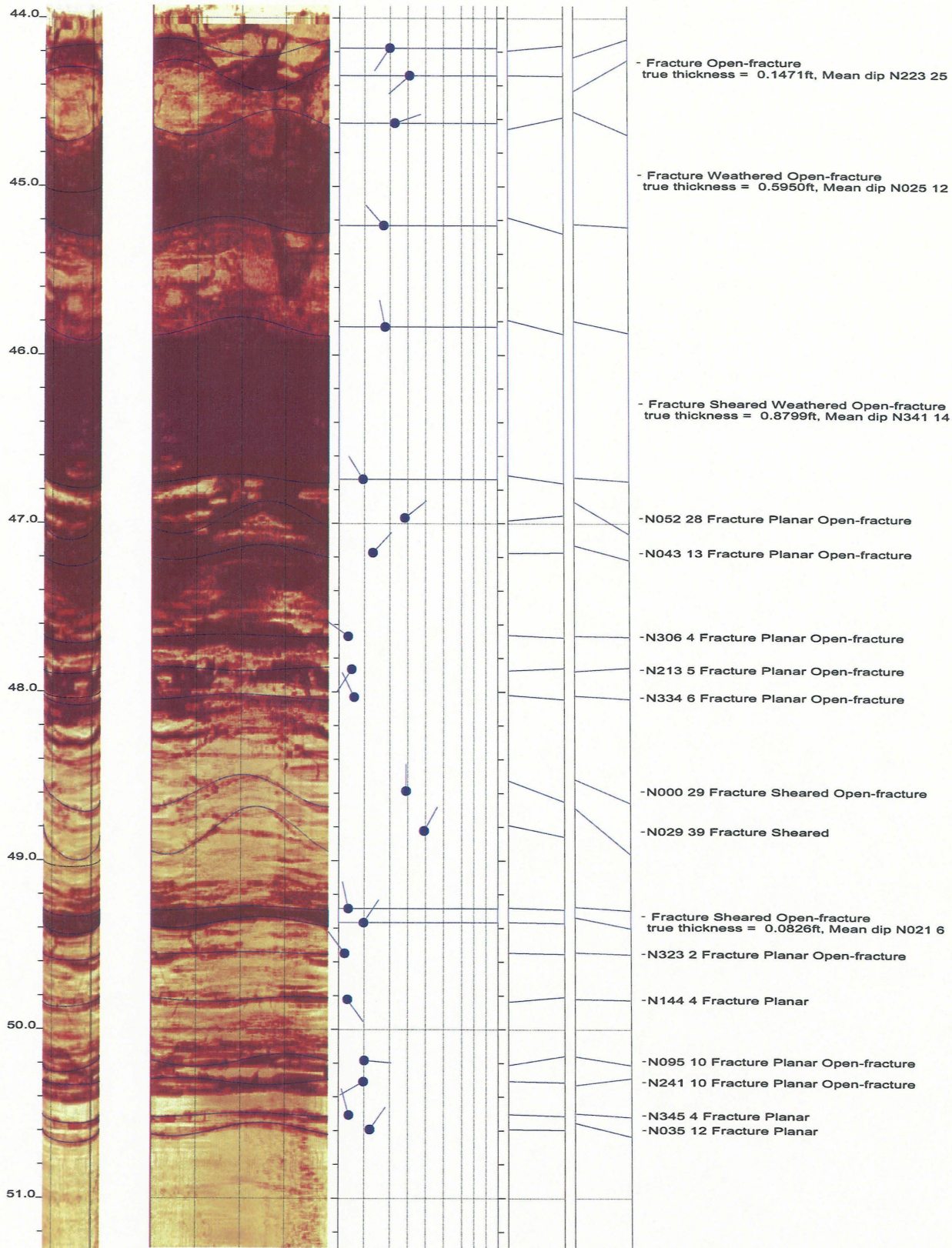
MACTEC Engineering and Consulting, Inc.
 SCE&G COL Geotechnical Data Attachment E

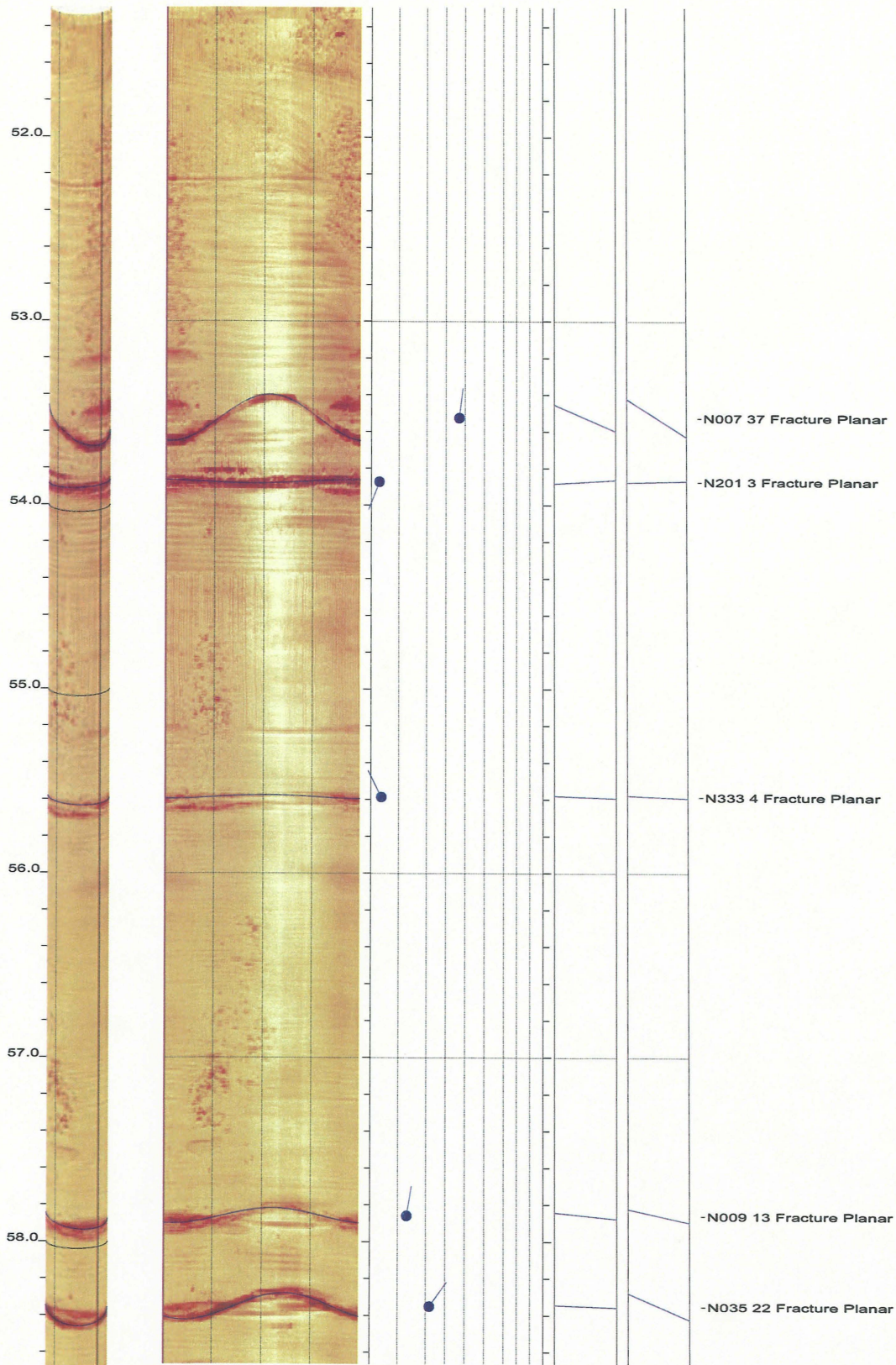
Project 6234-06-3534
 January 2007

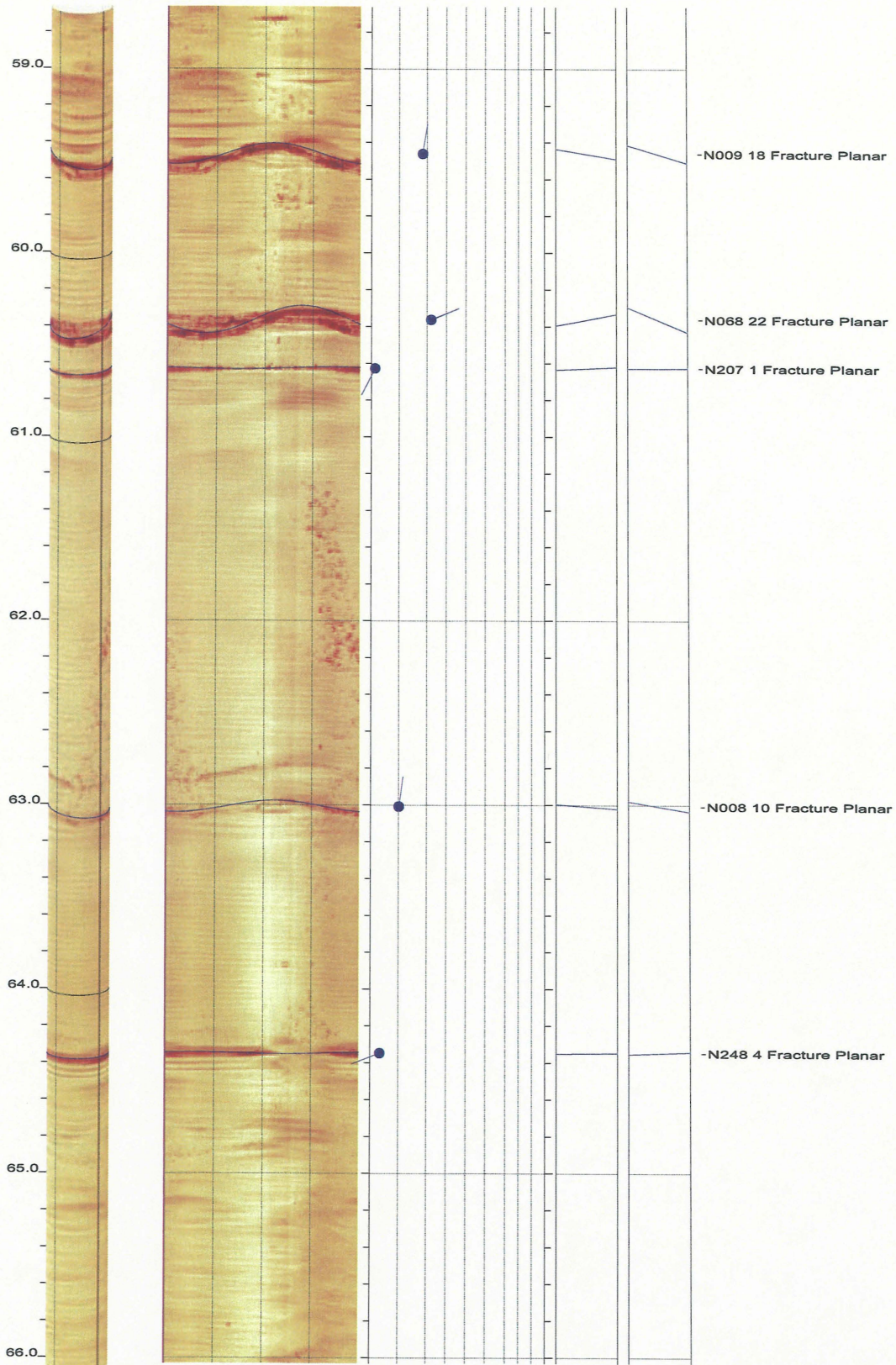


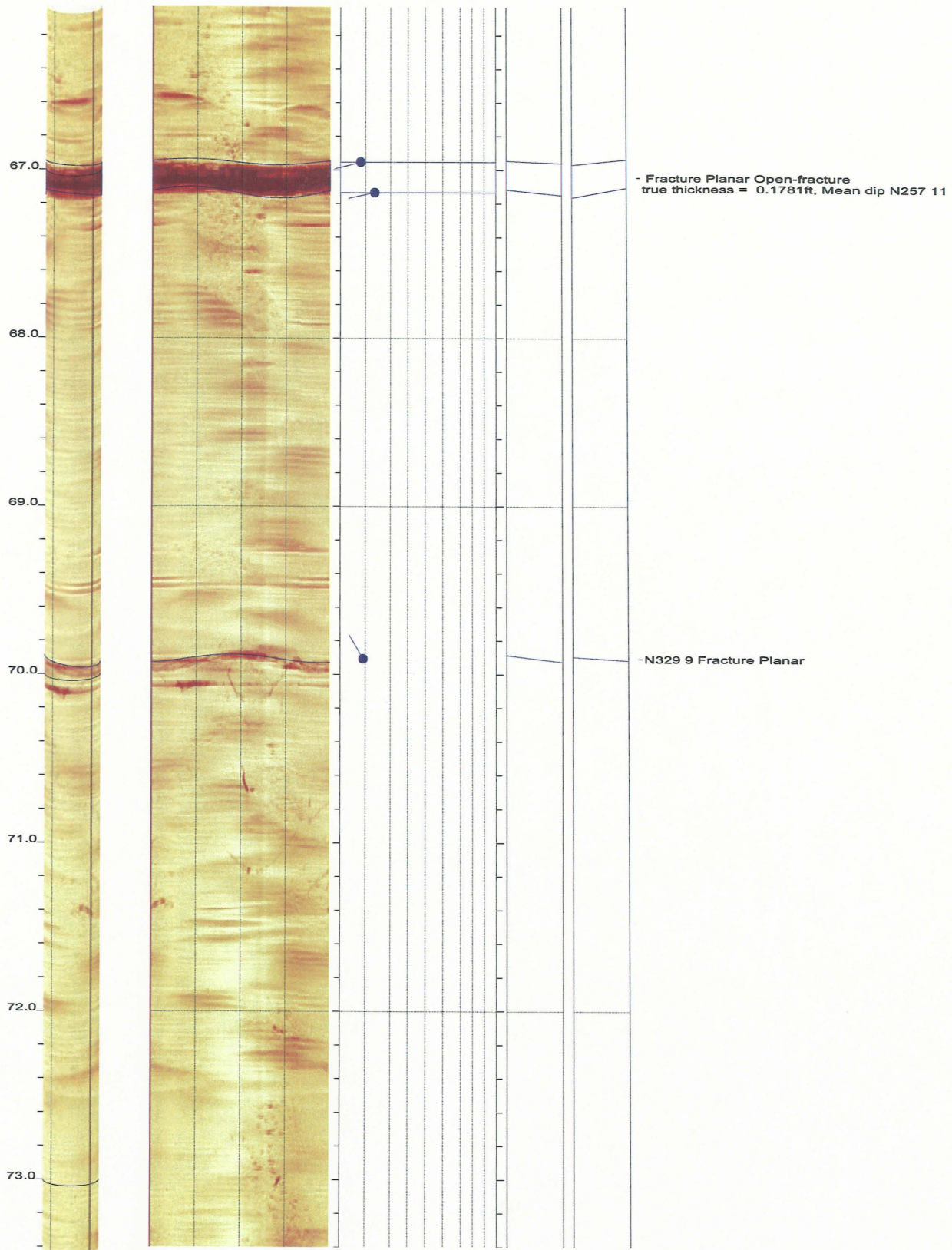


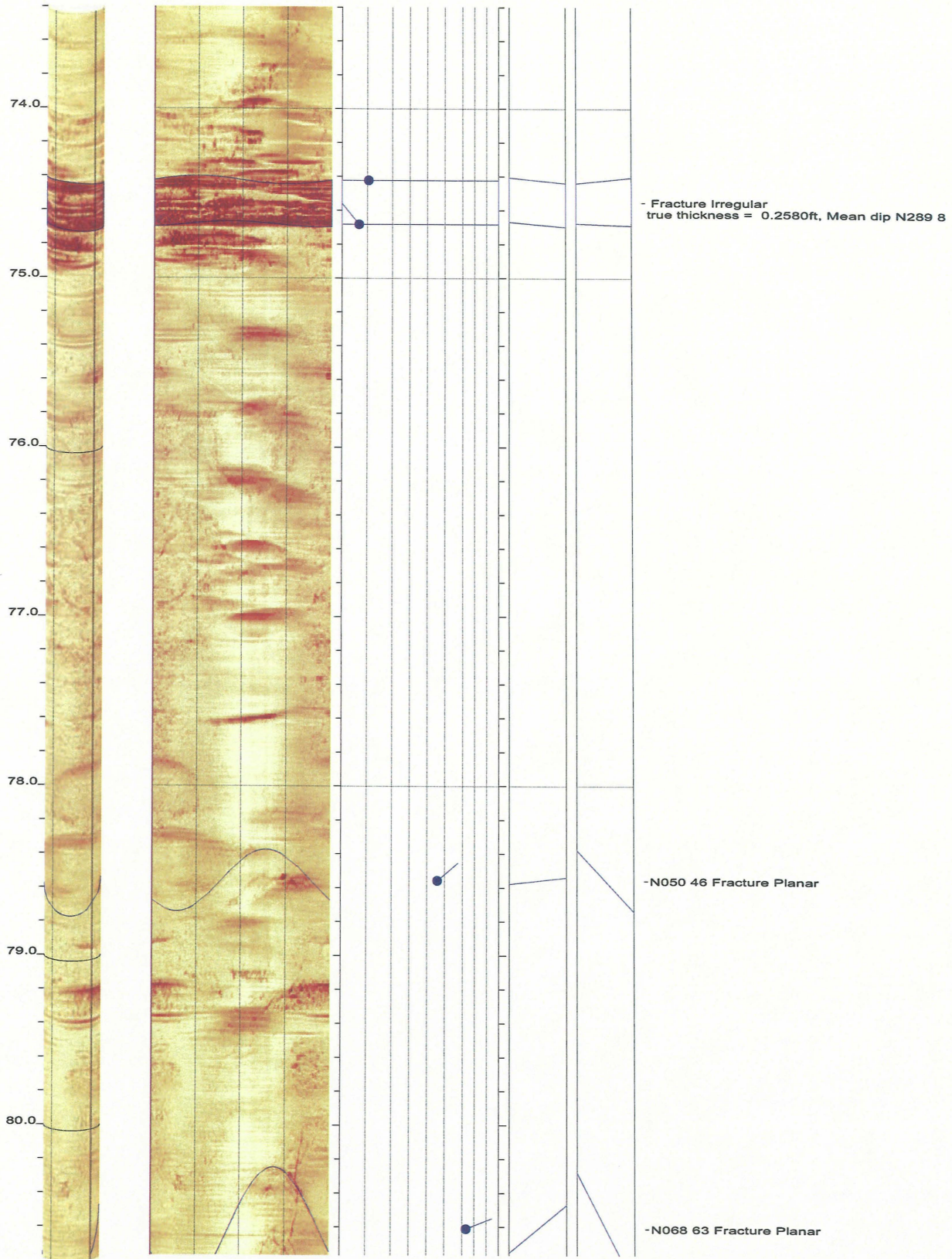


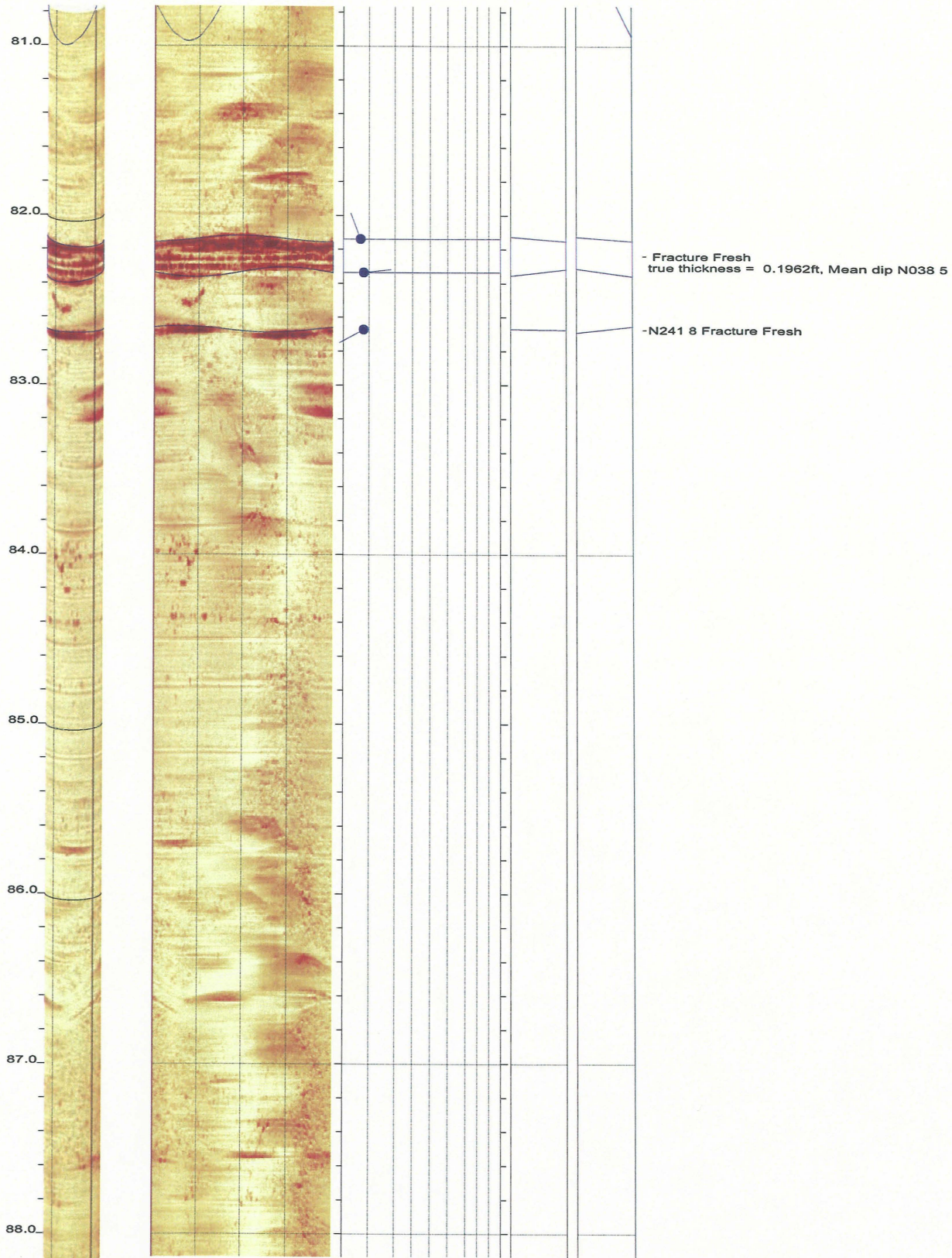


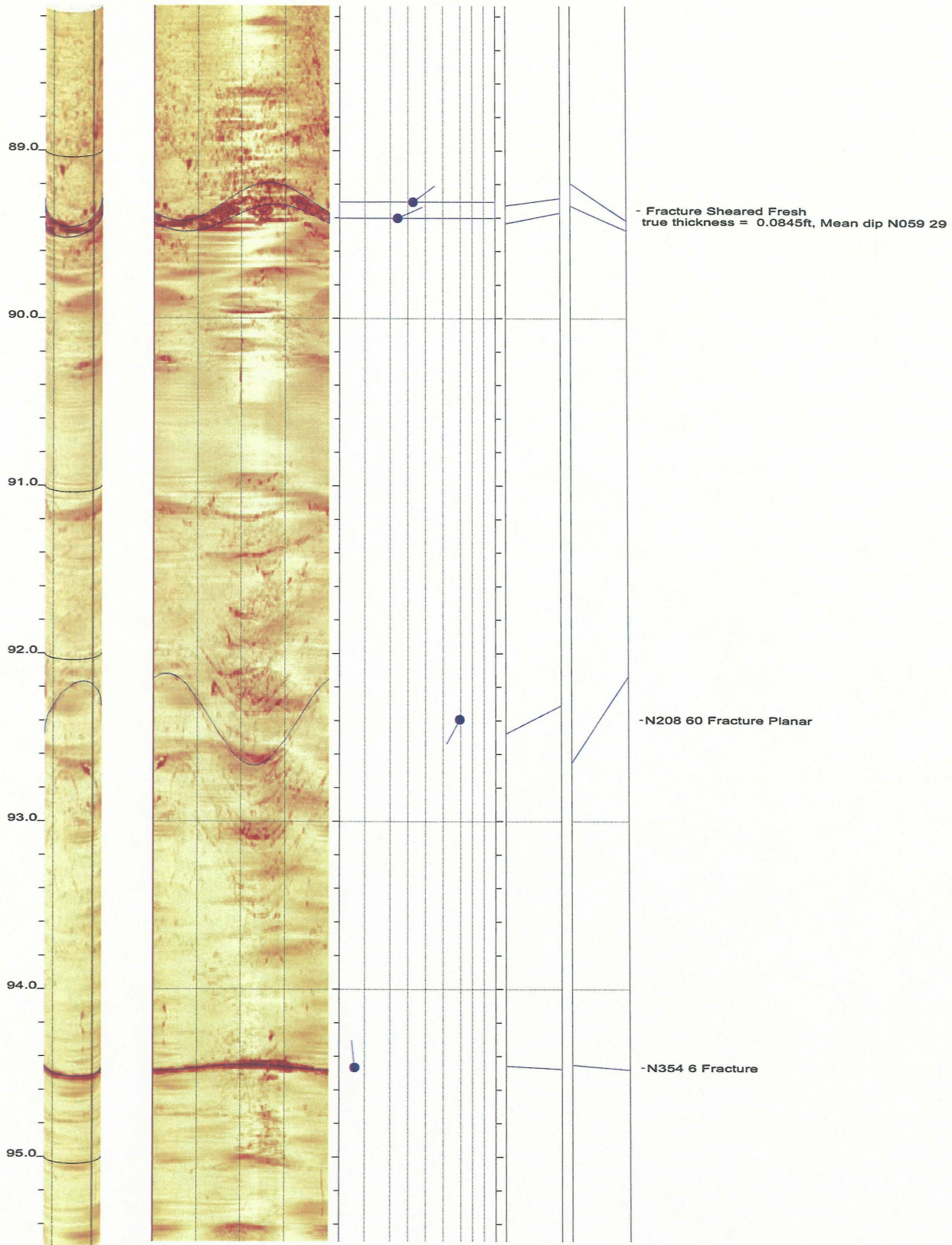


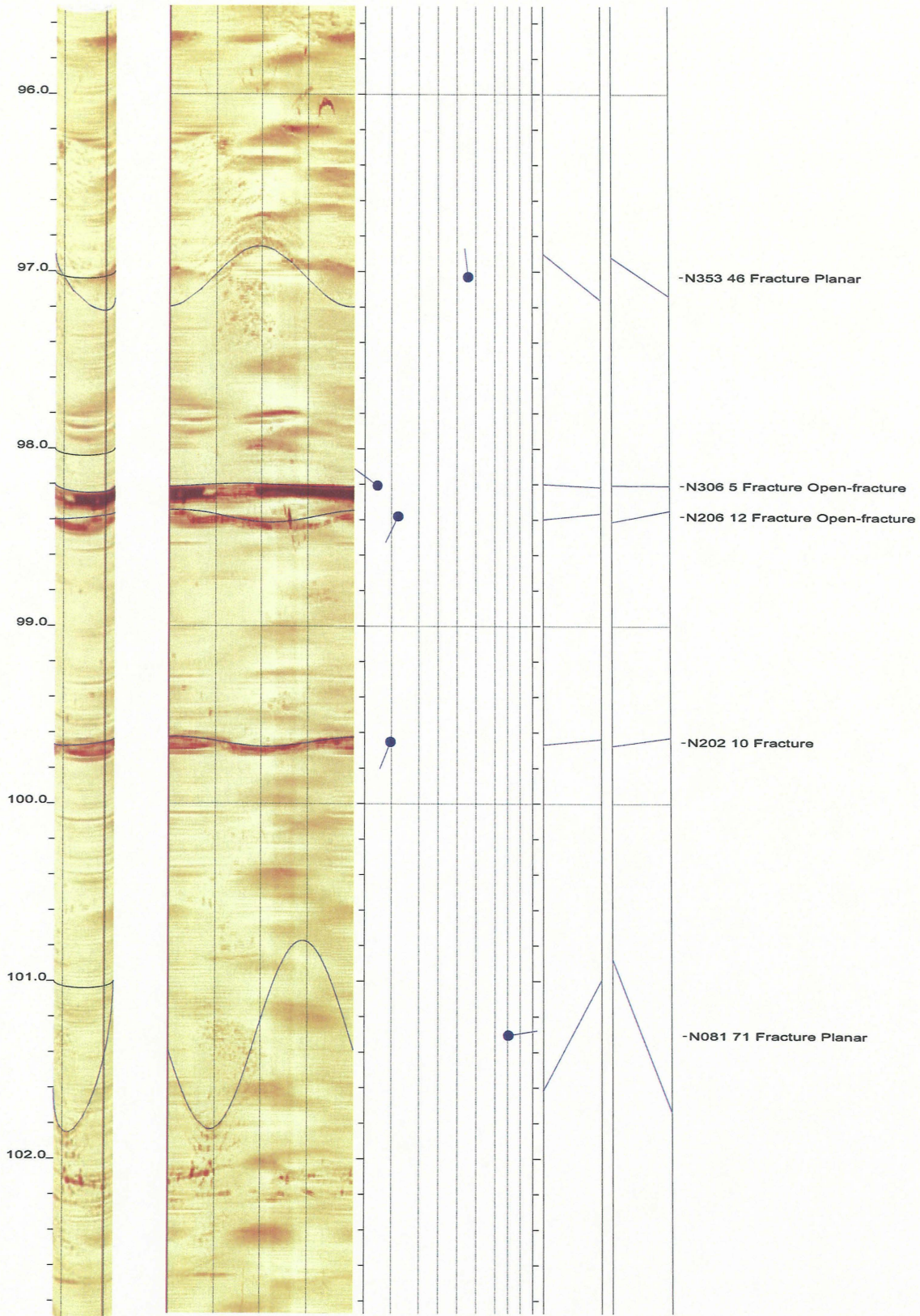


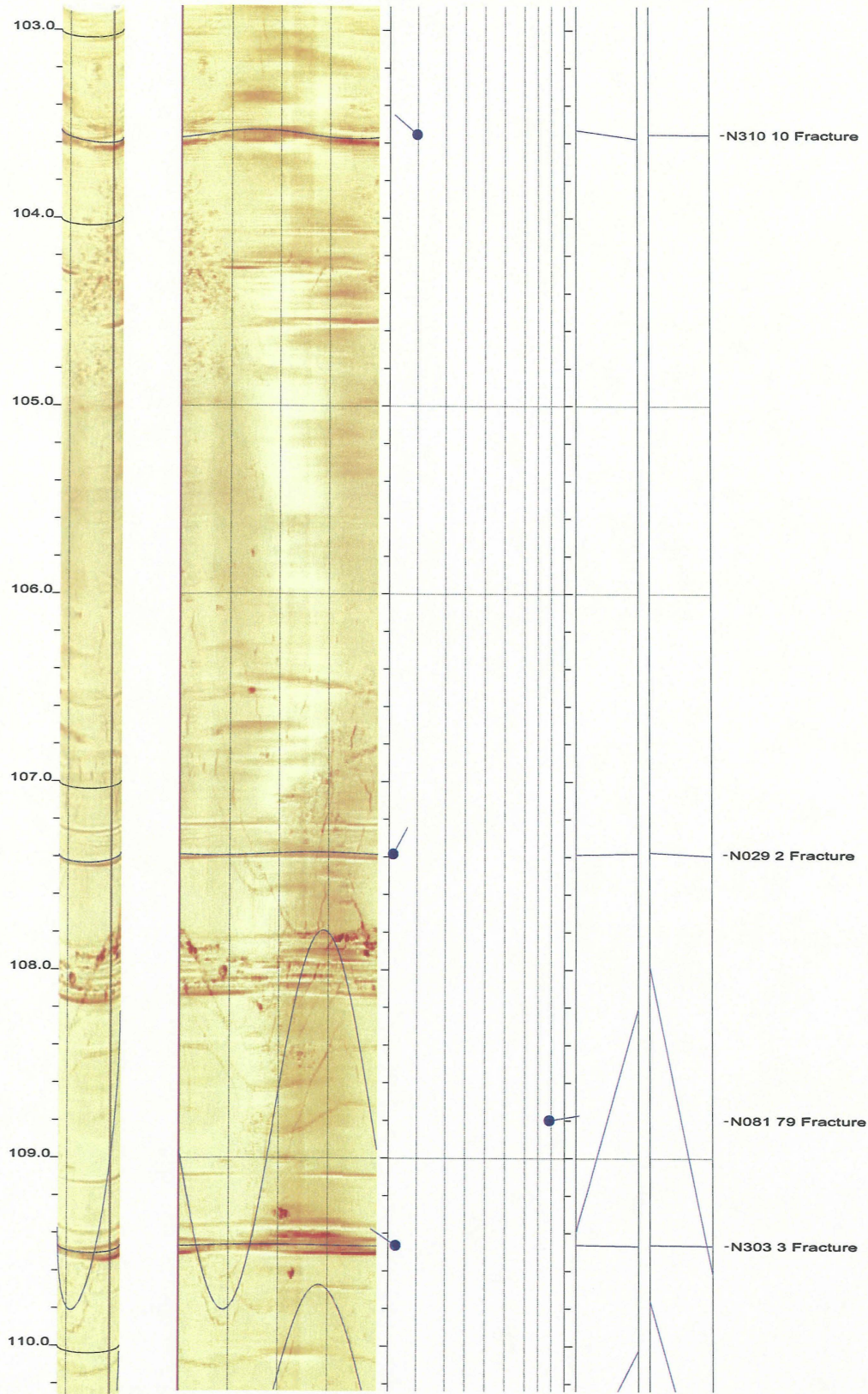


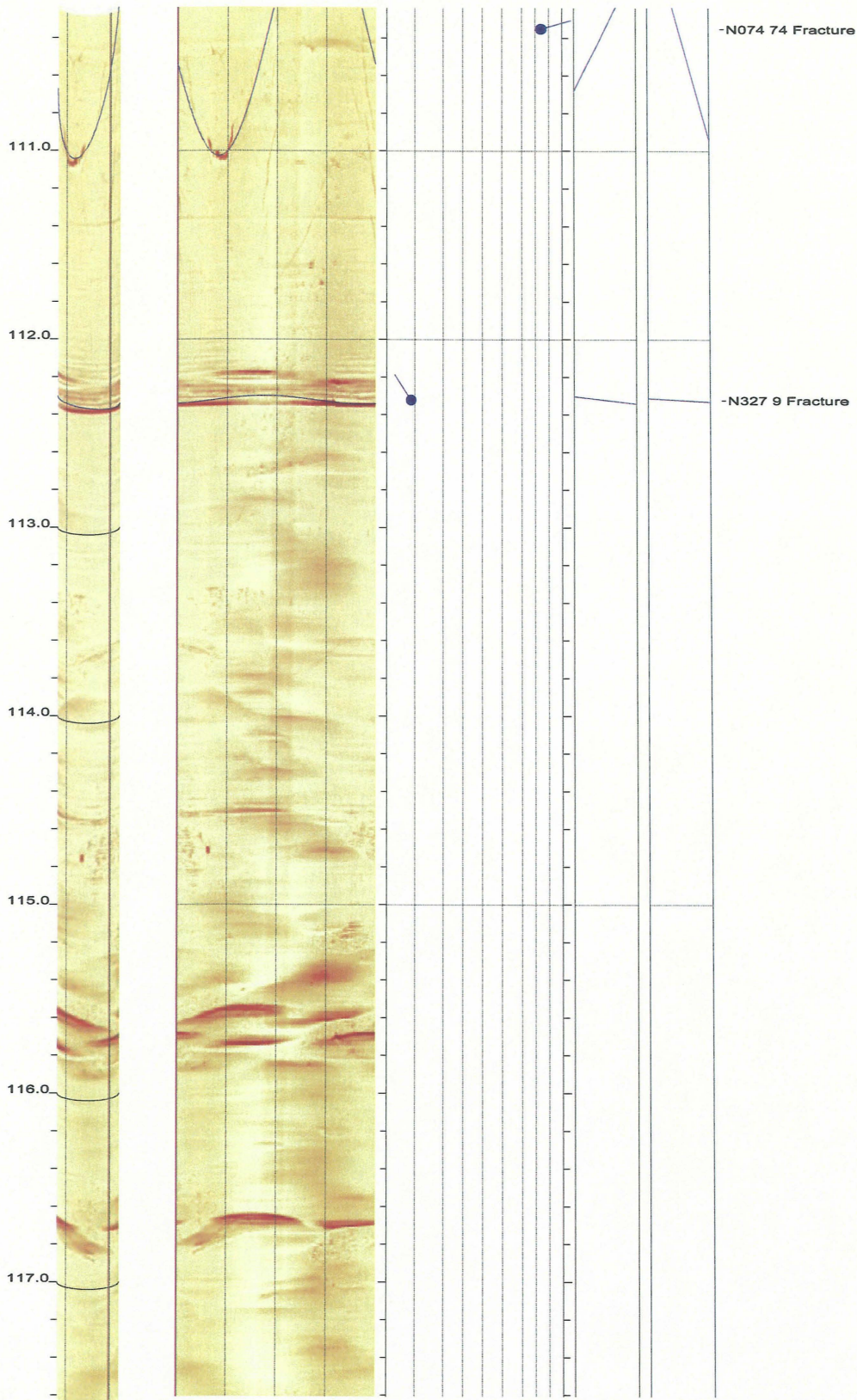


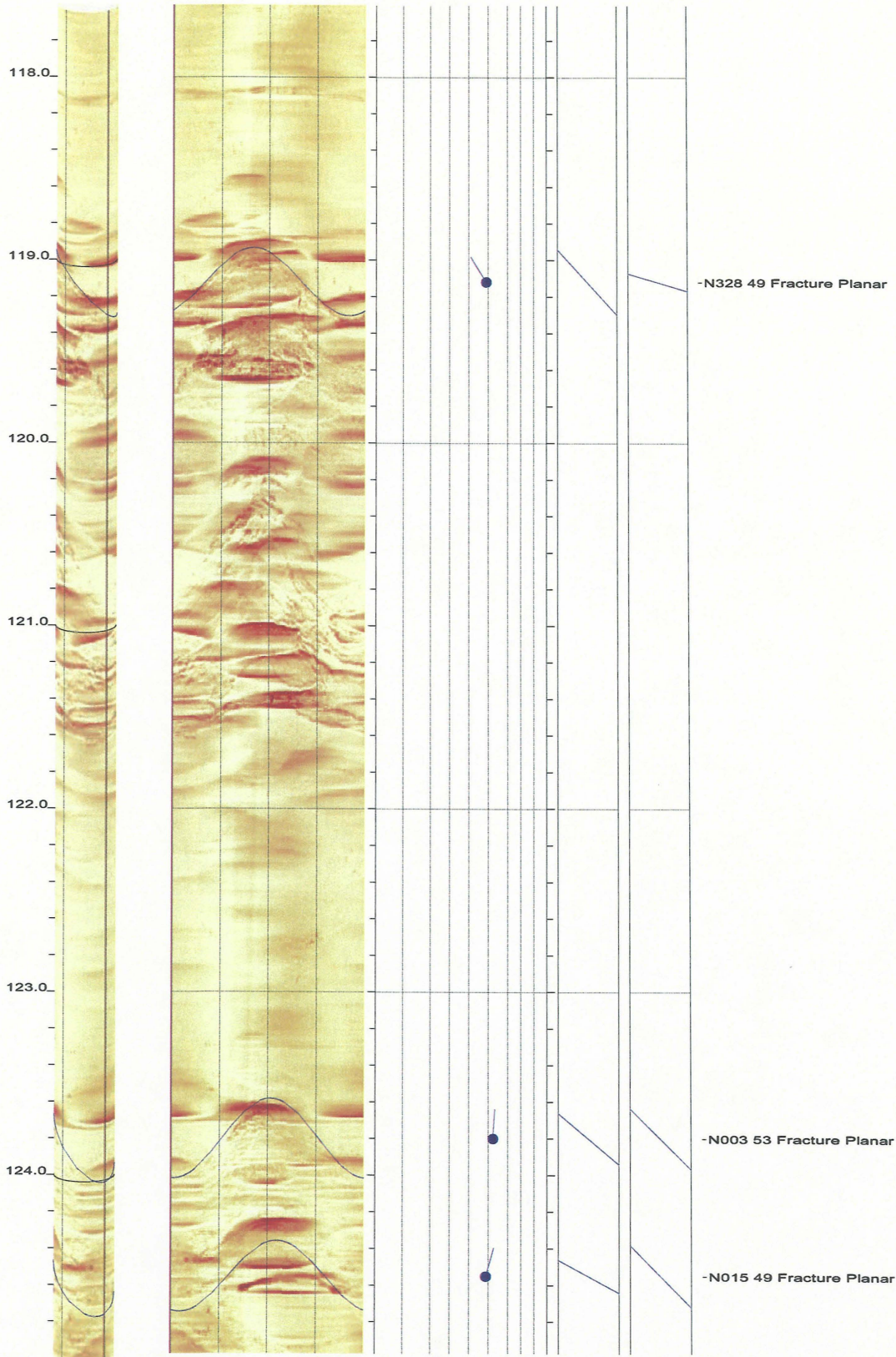


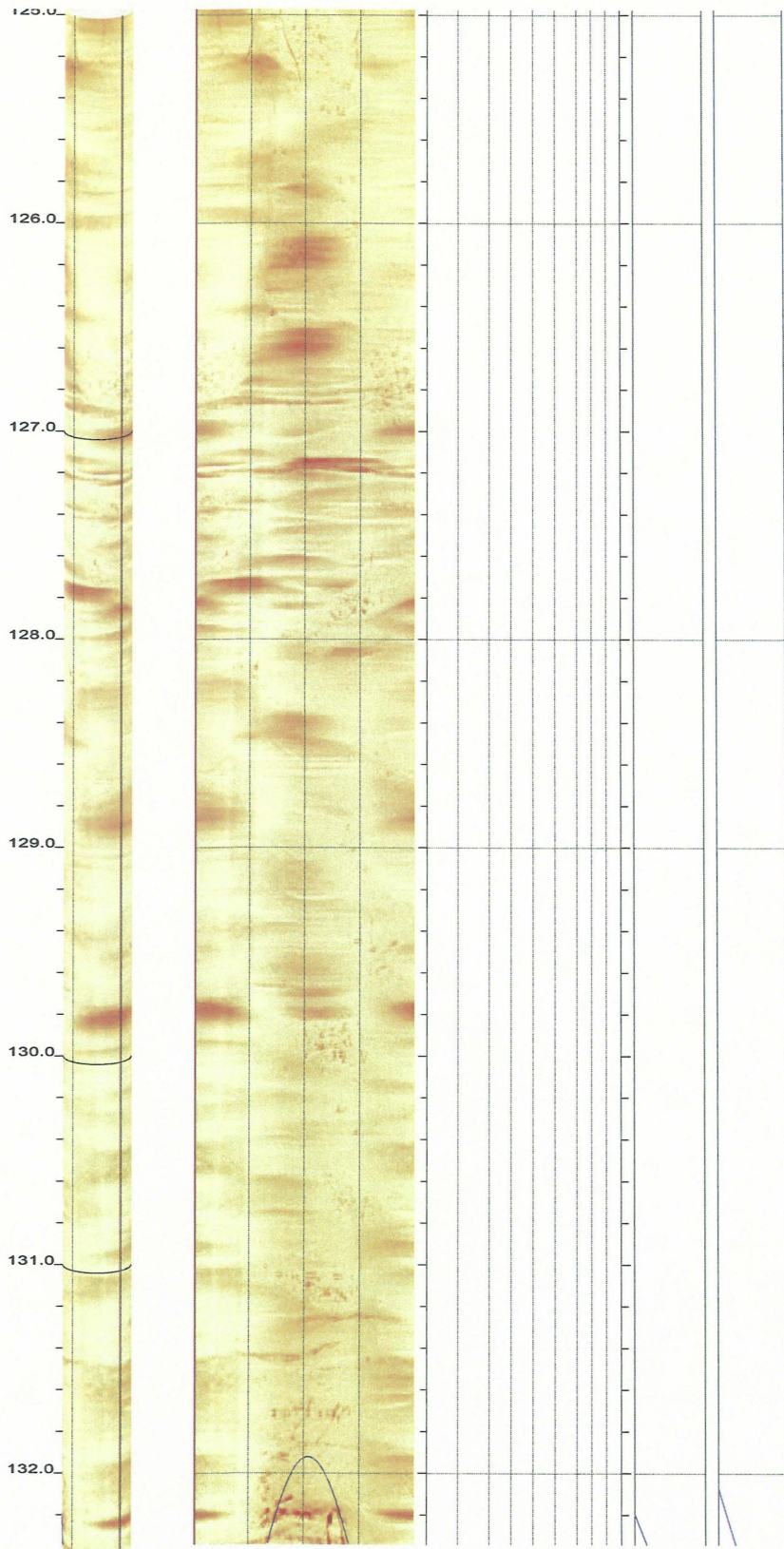


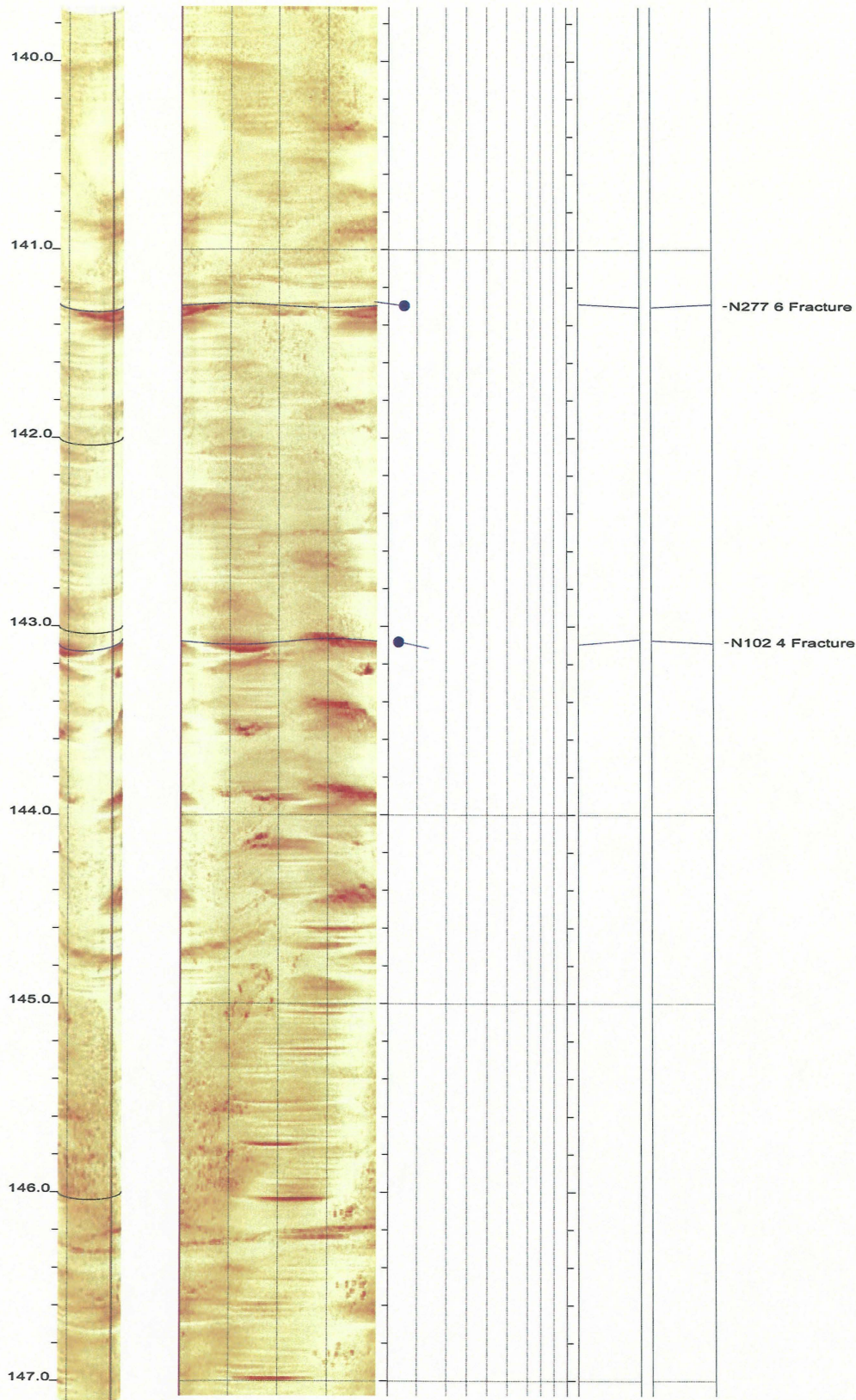


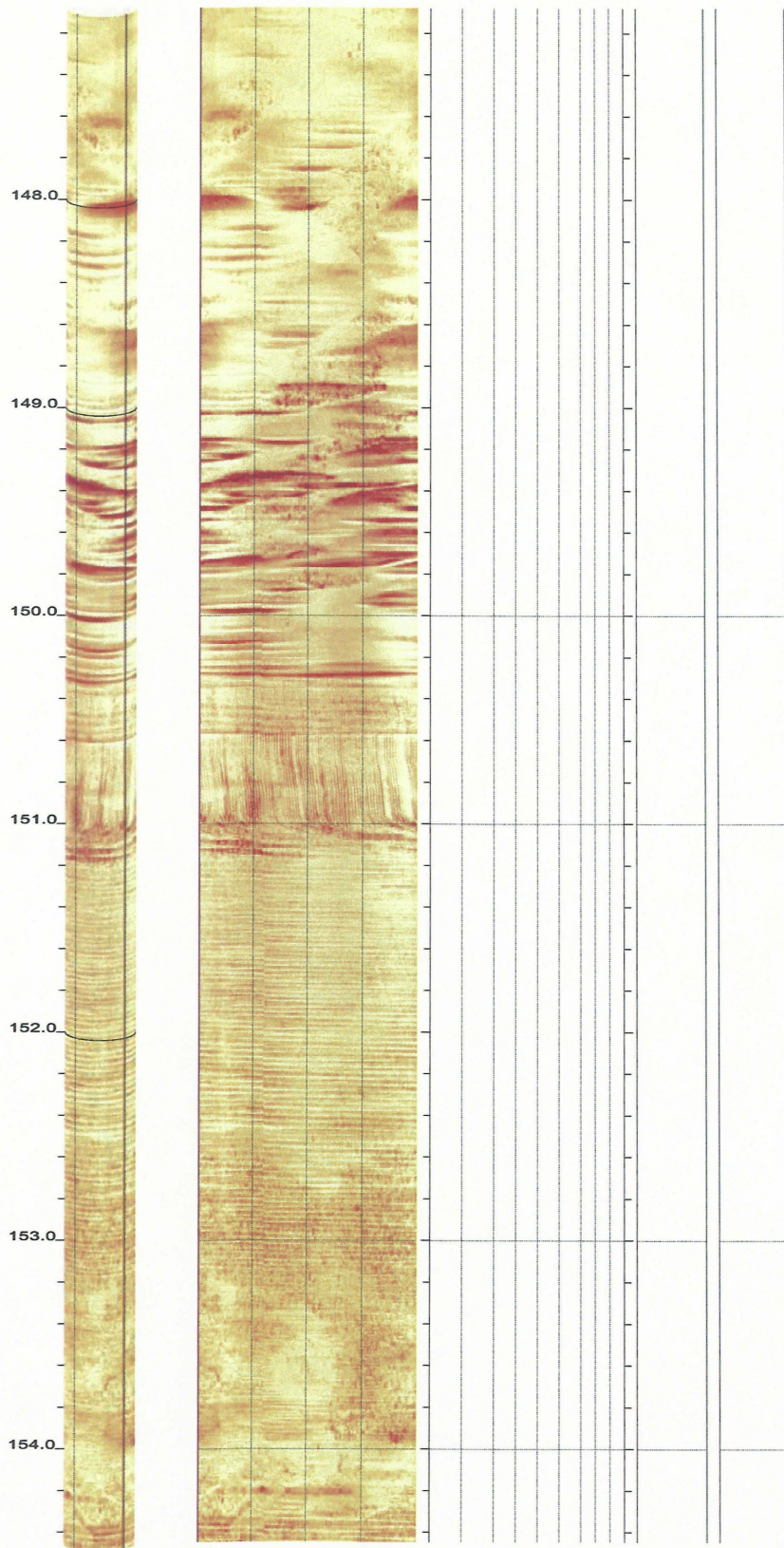


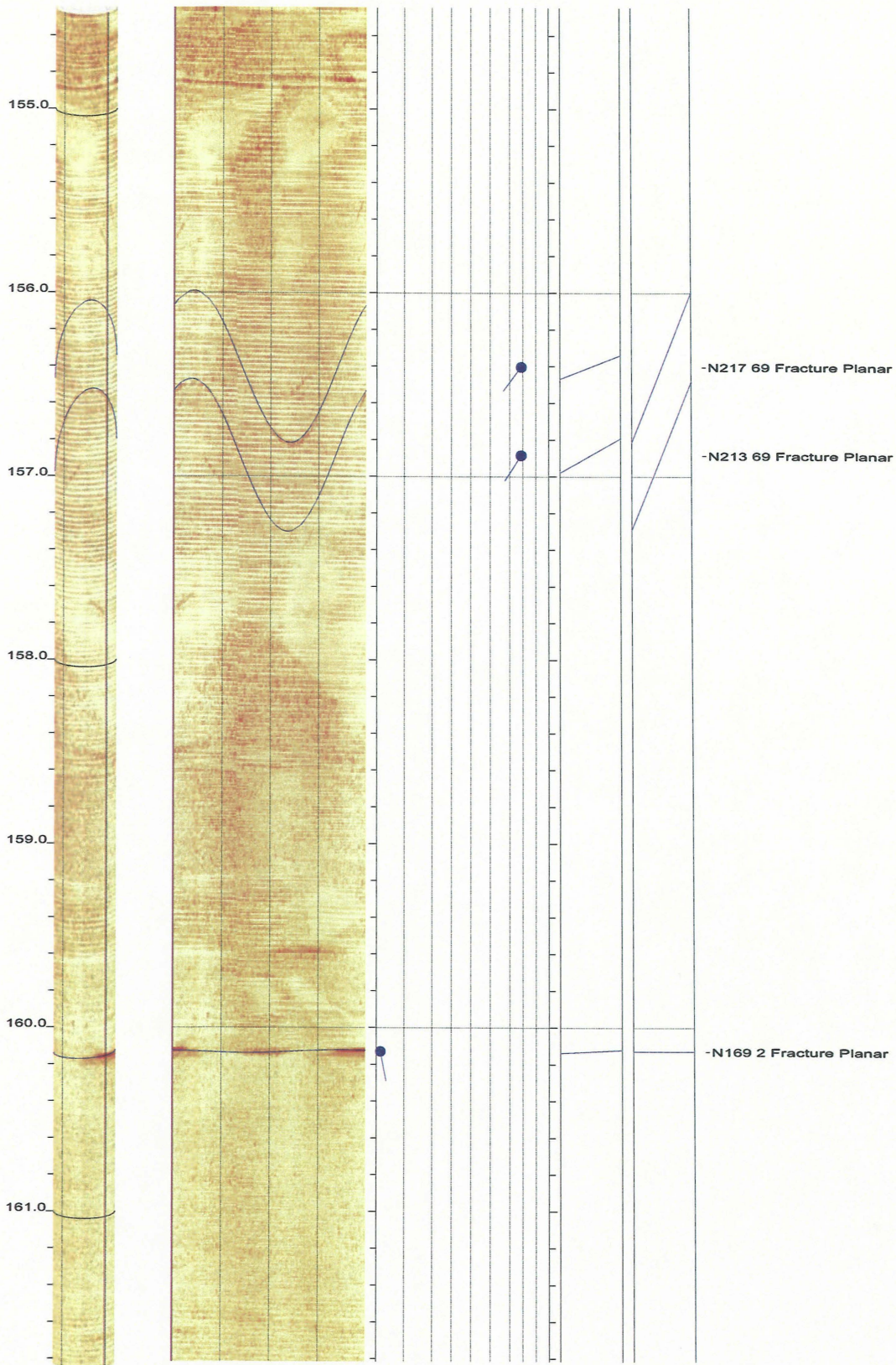


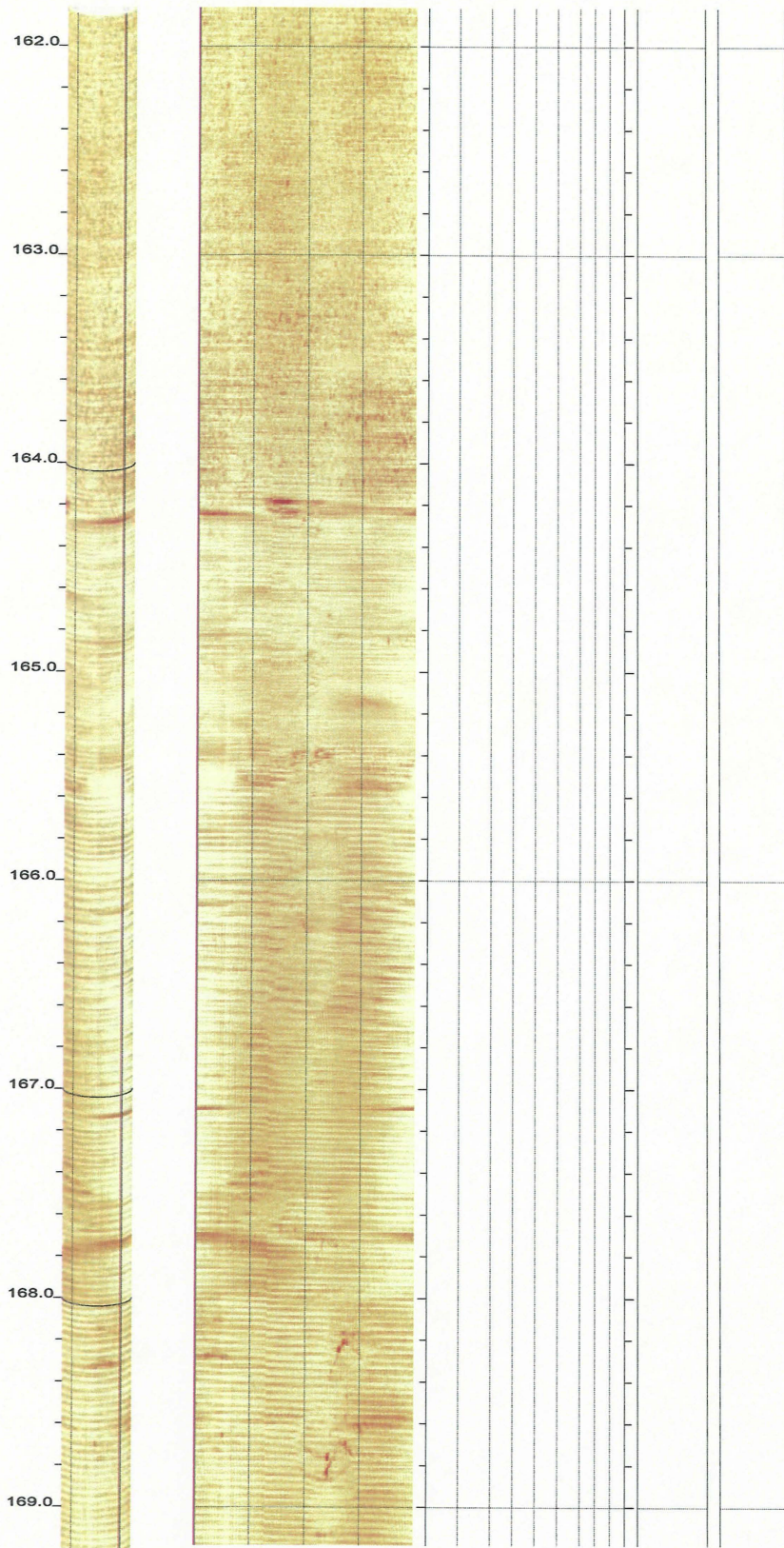


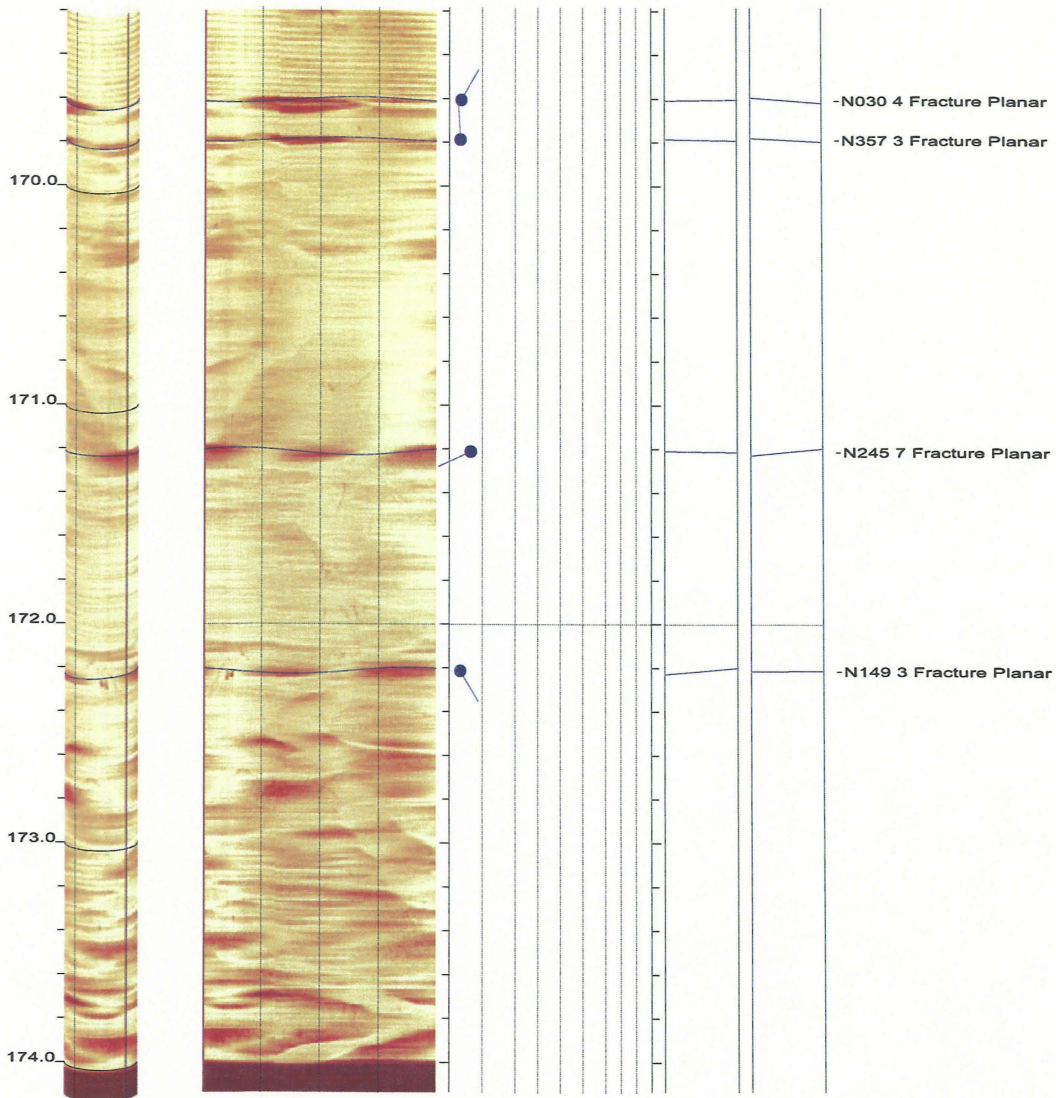














BHTV DATA PROCESSING
 RGLDIP vsn 6.2
 INTERPRETED BHTV DIPS LOG

04 Dec 2006

ROBERTSON GEOLOGGING TECHNOLOGY

Borehole: B-211

top of borehole.....

East: _

North: _

Elev: _

North ref. is magnetic

Depth units are feet

Vertical scale: 1/10

Horiz scale = 1.00x Vert scale

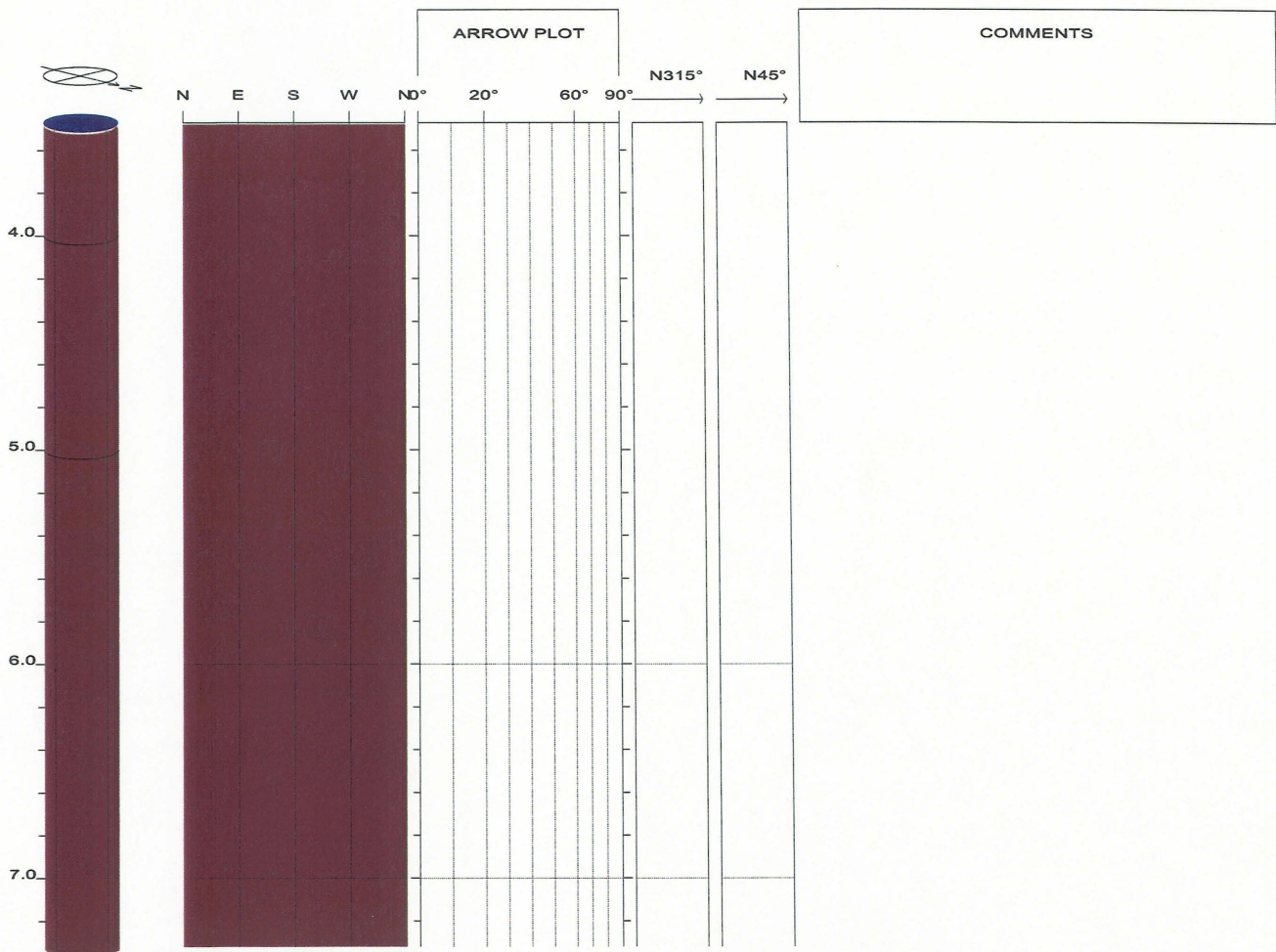
Zone from 3.472 to 174.694ft

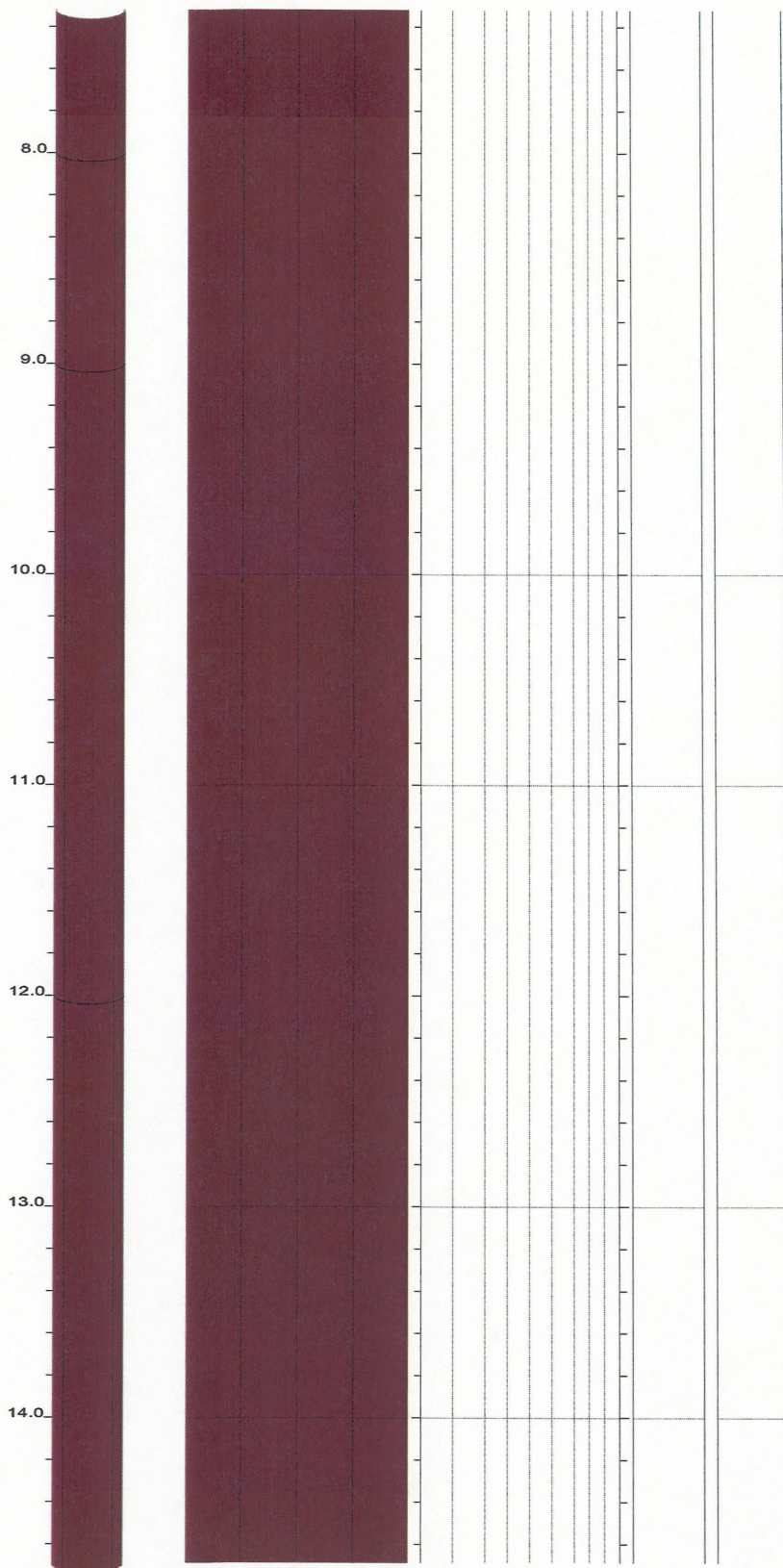
Format: BHTV-NESWN

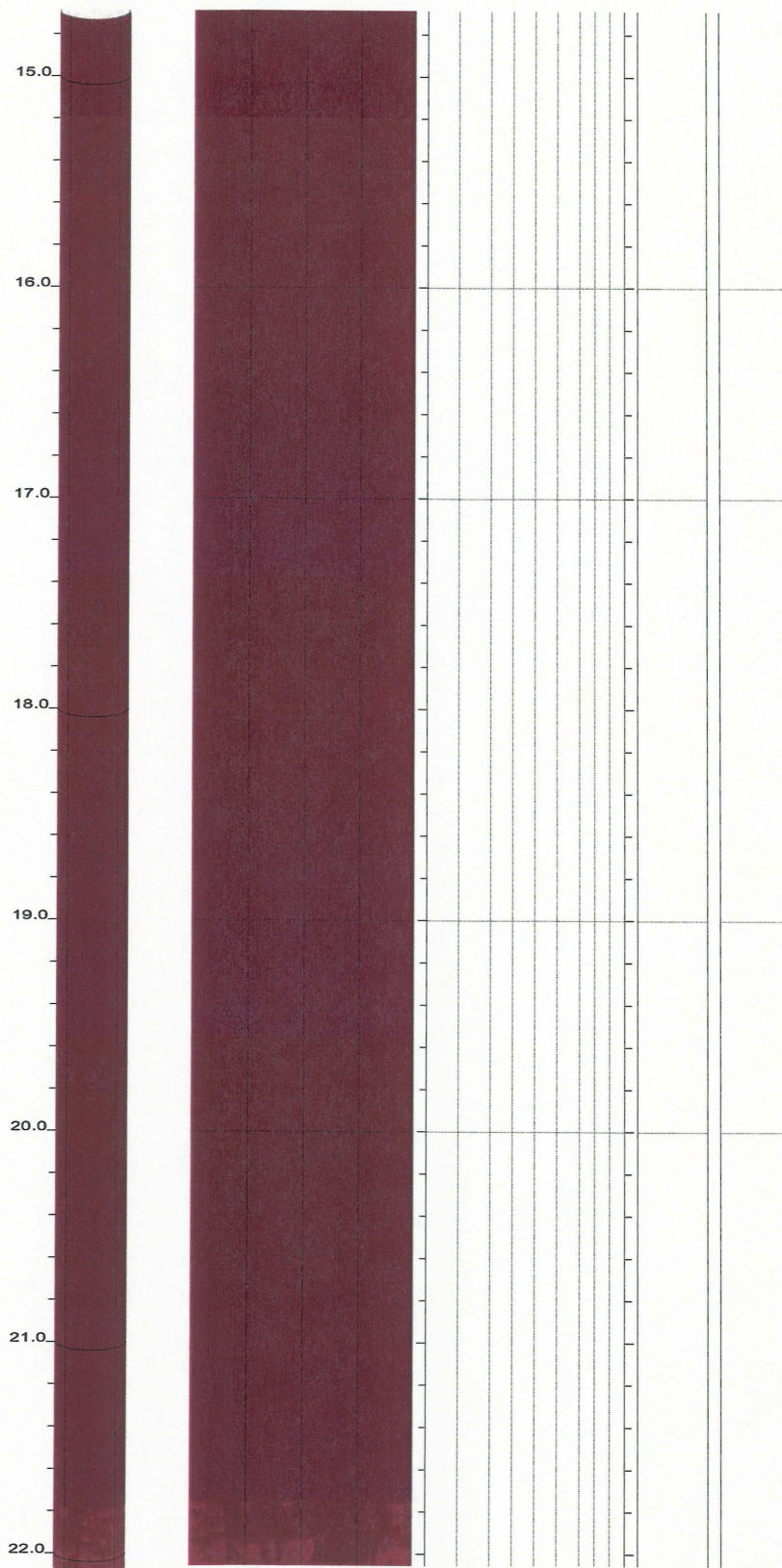
Borehole diam: 3.996inch

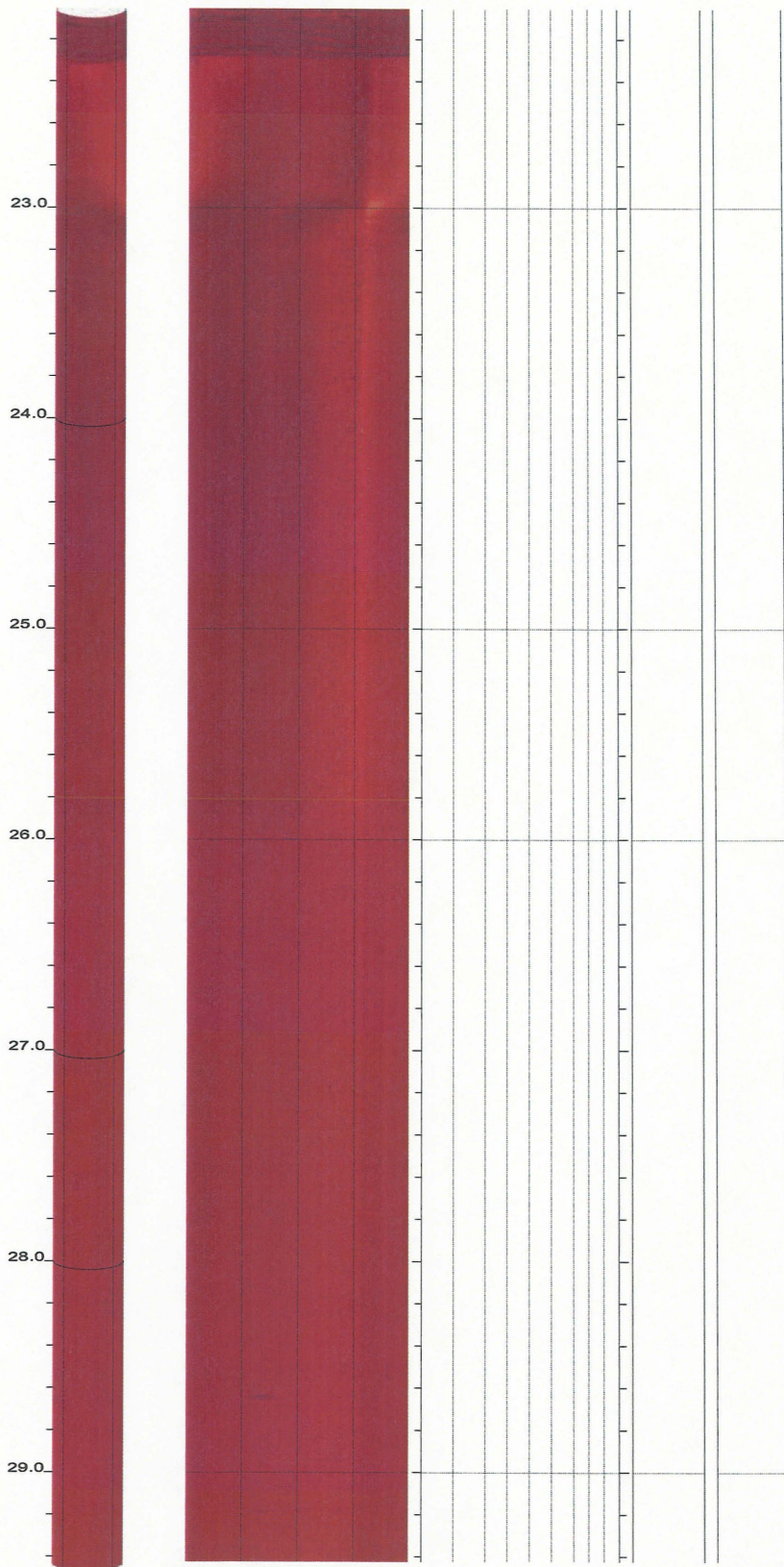
Vertical = borehole-axis

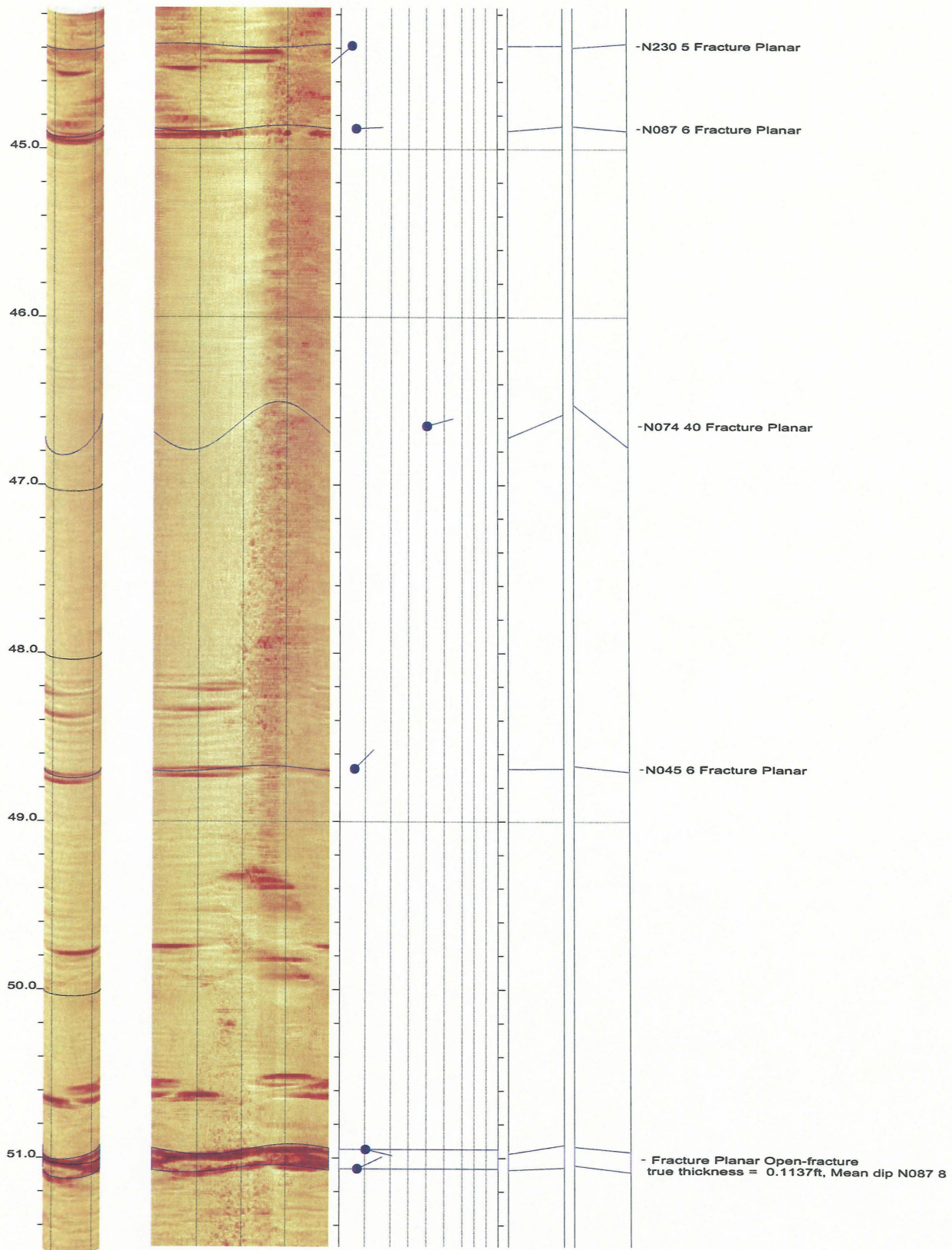
Image: Amplitude

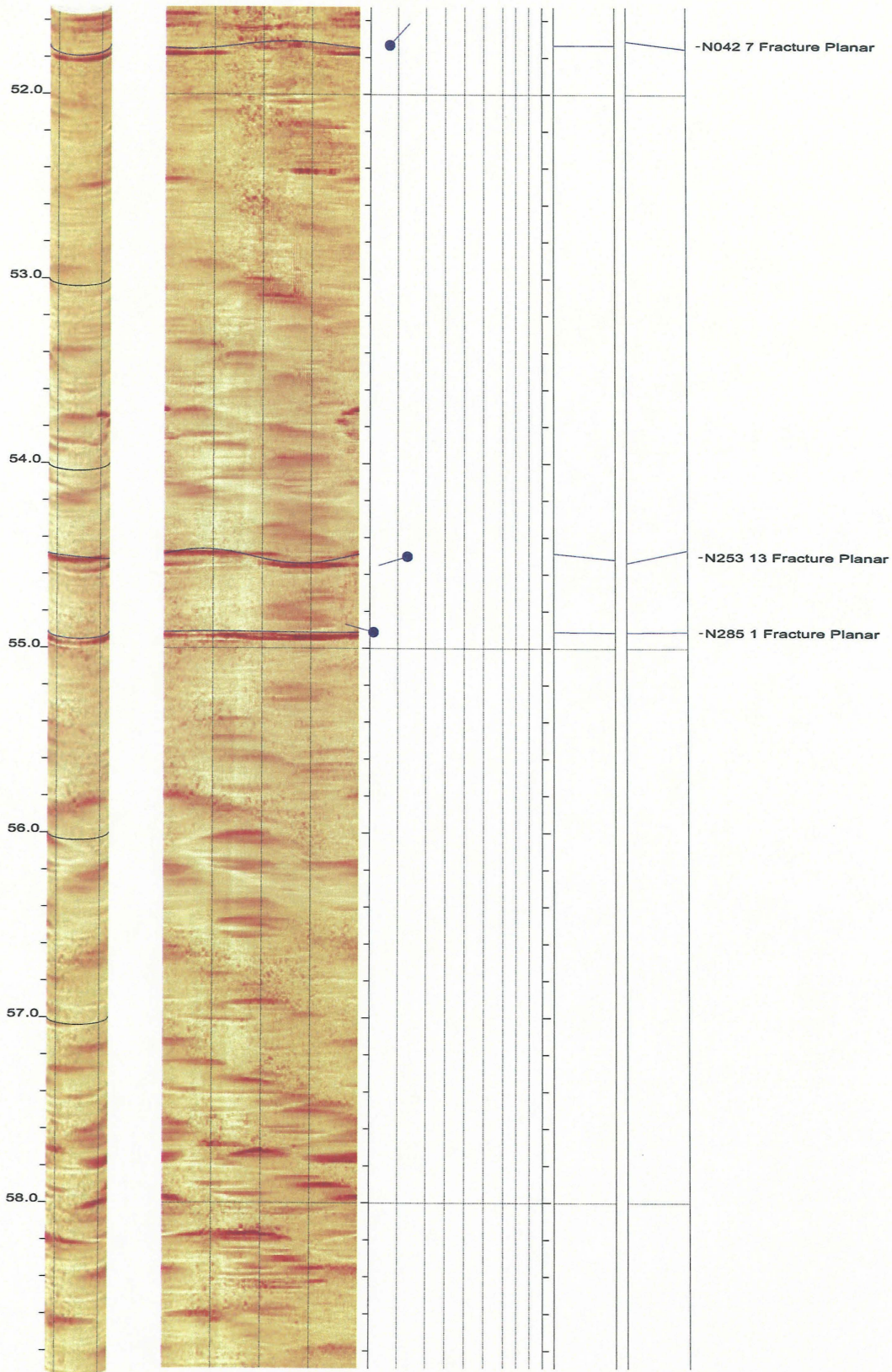


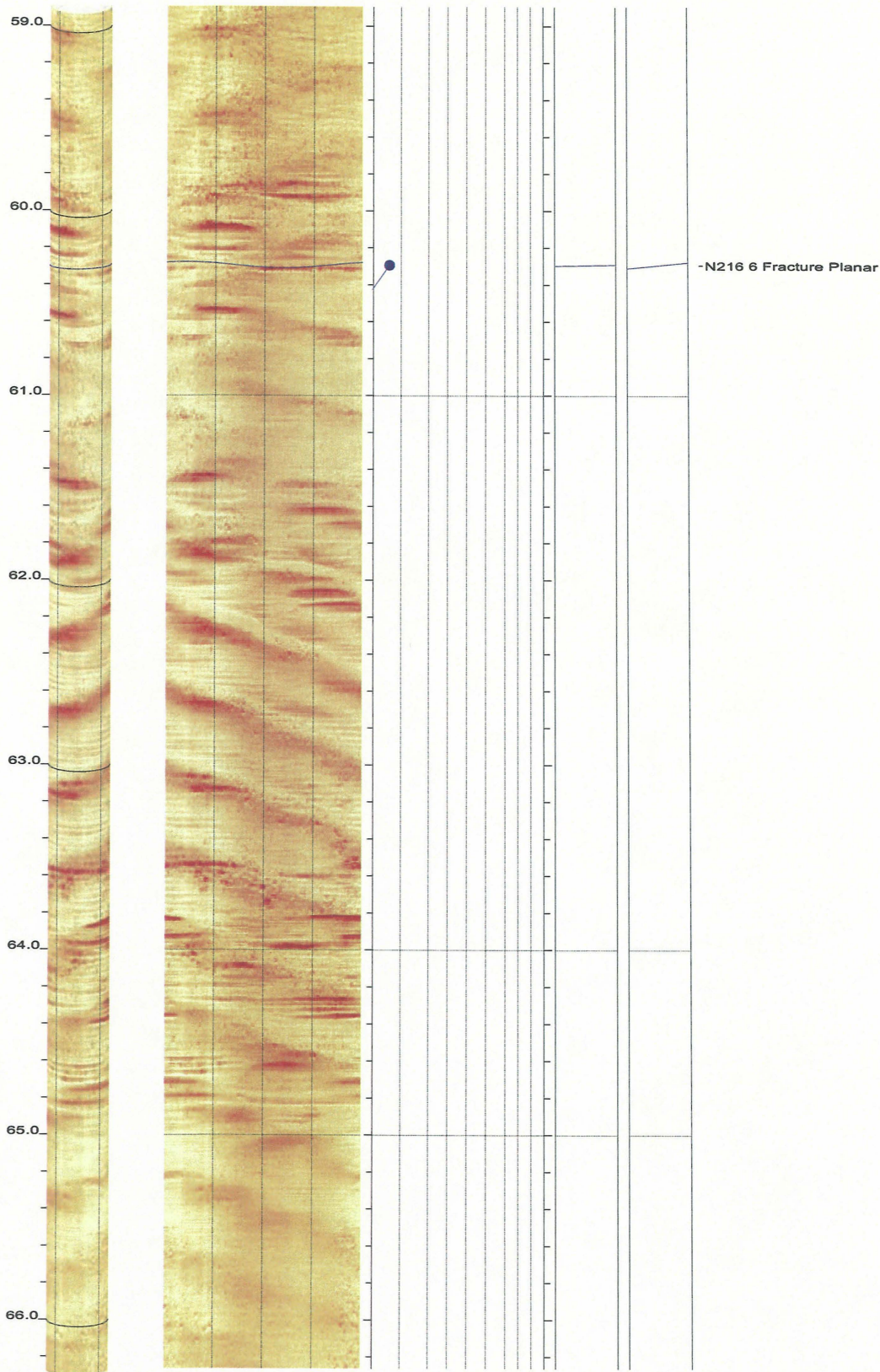


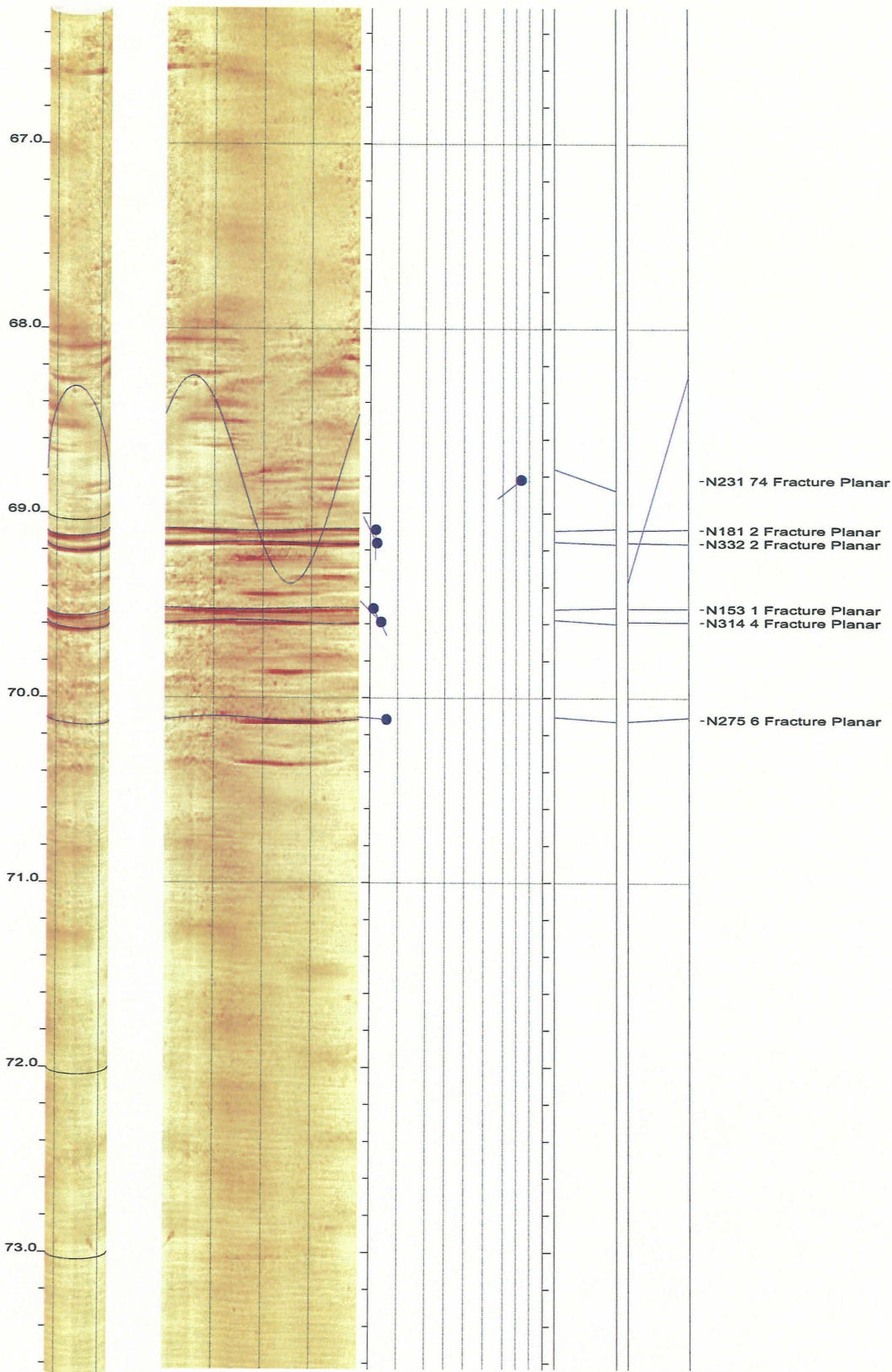


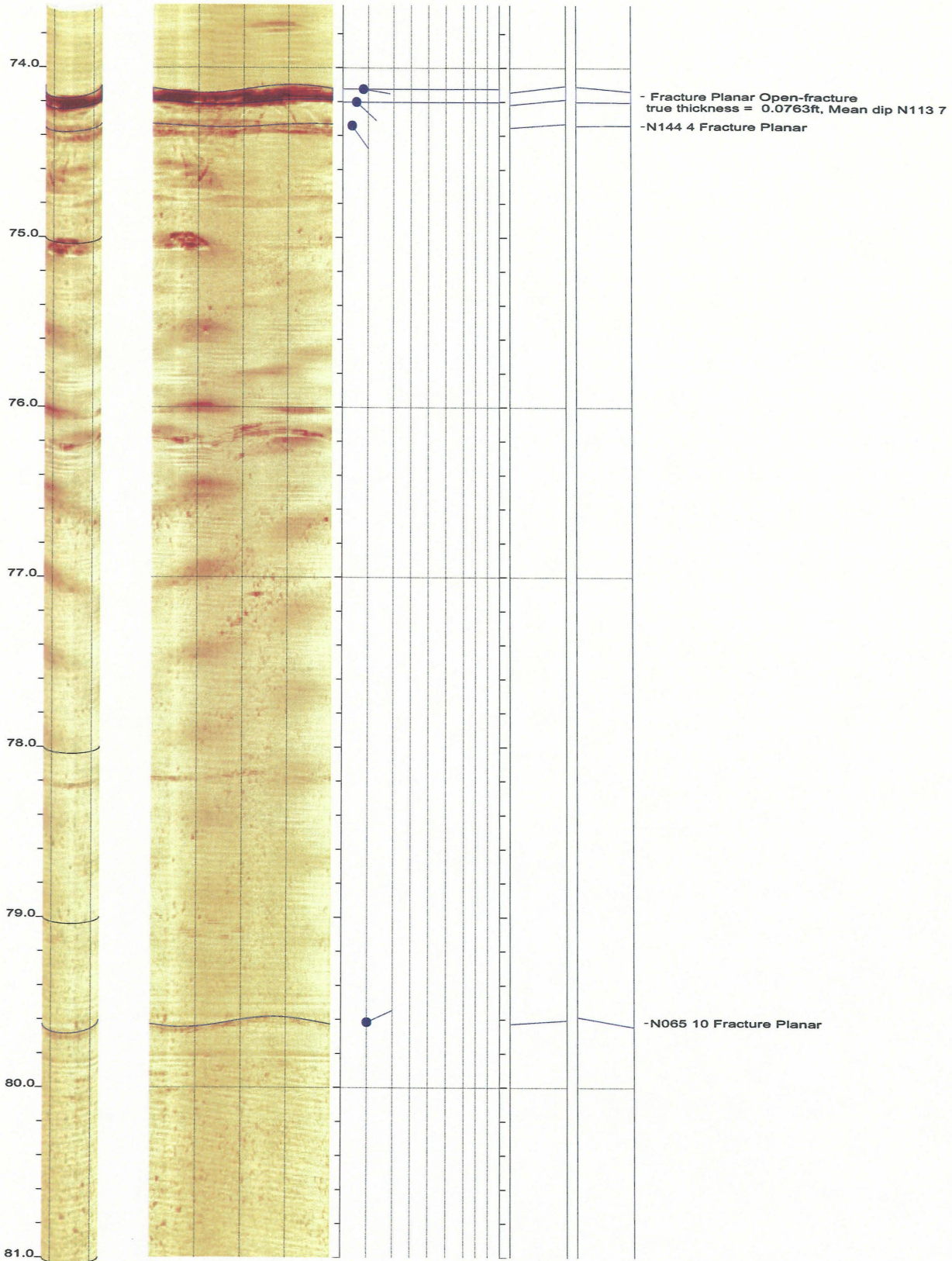


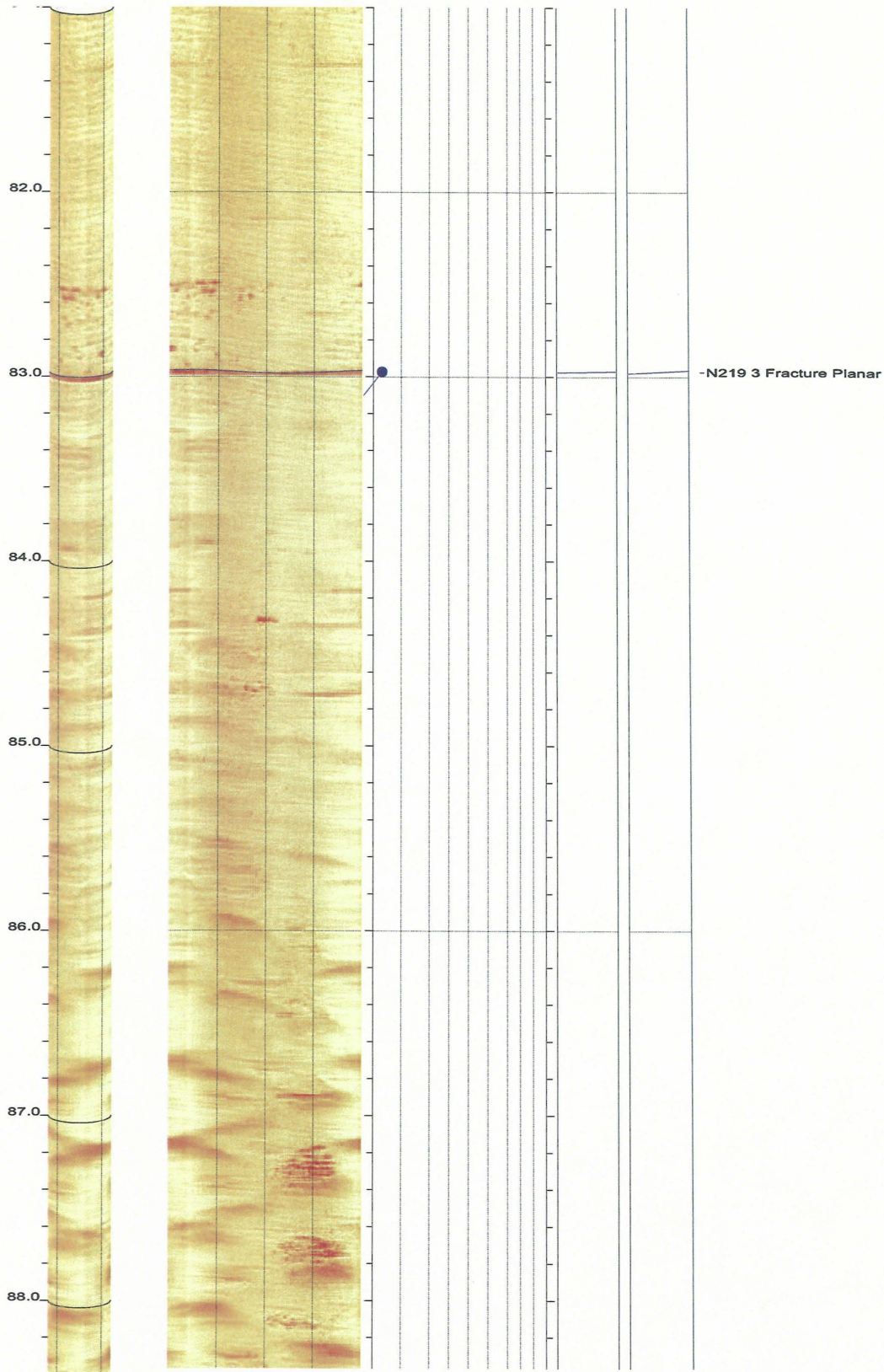


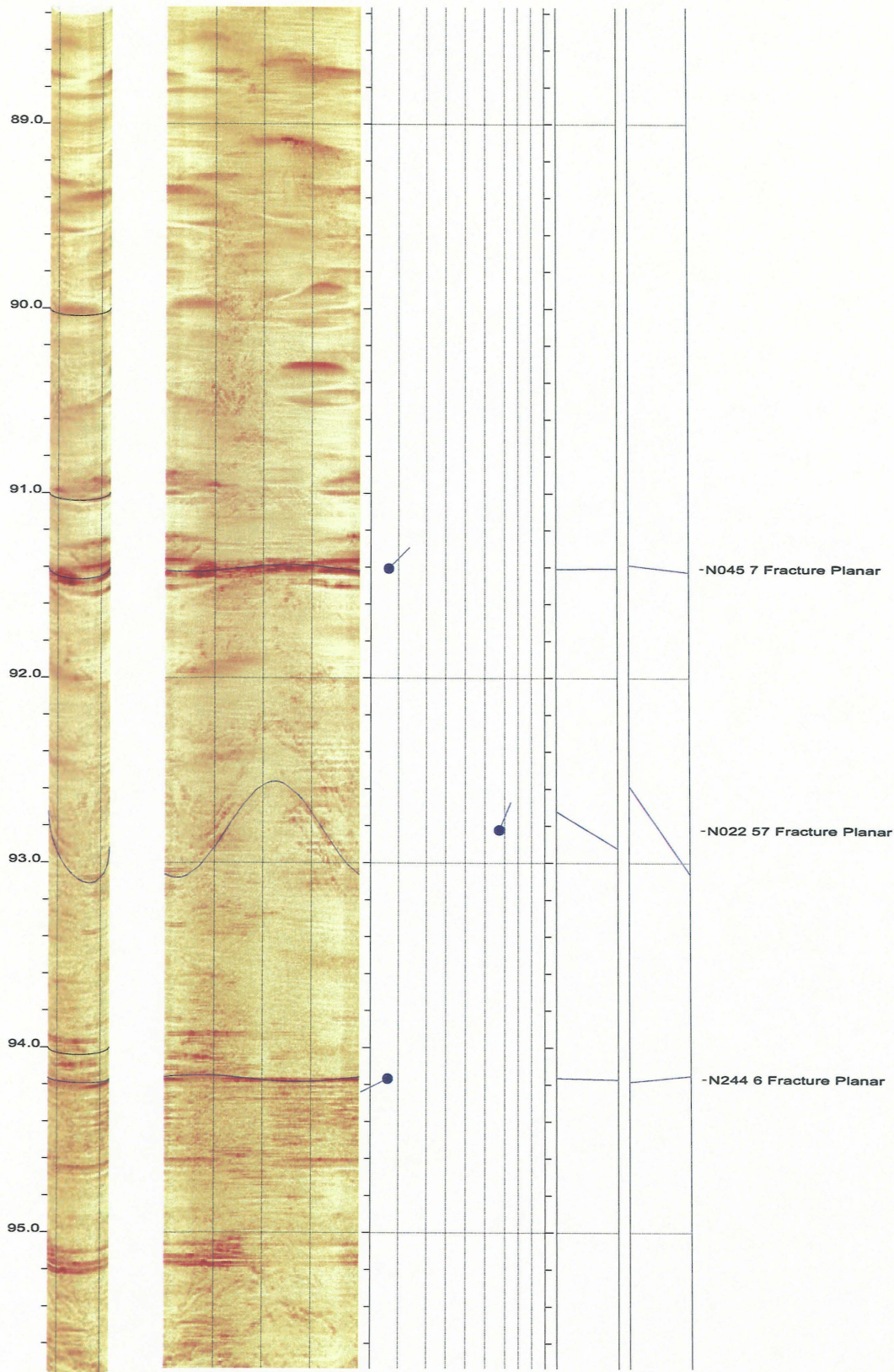


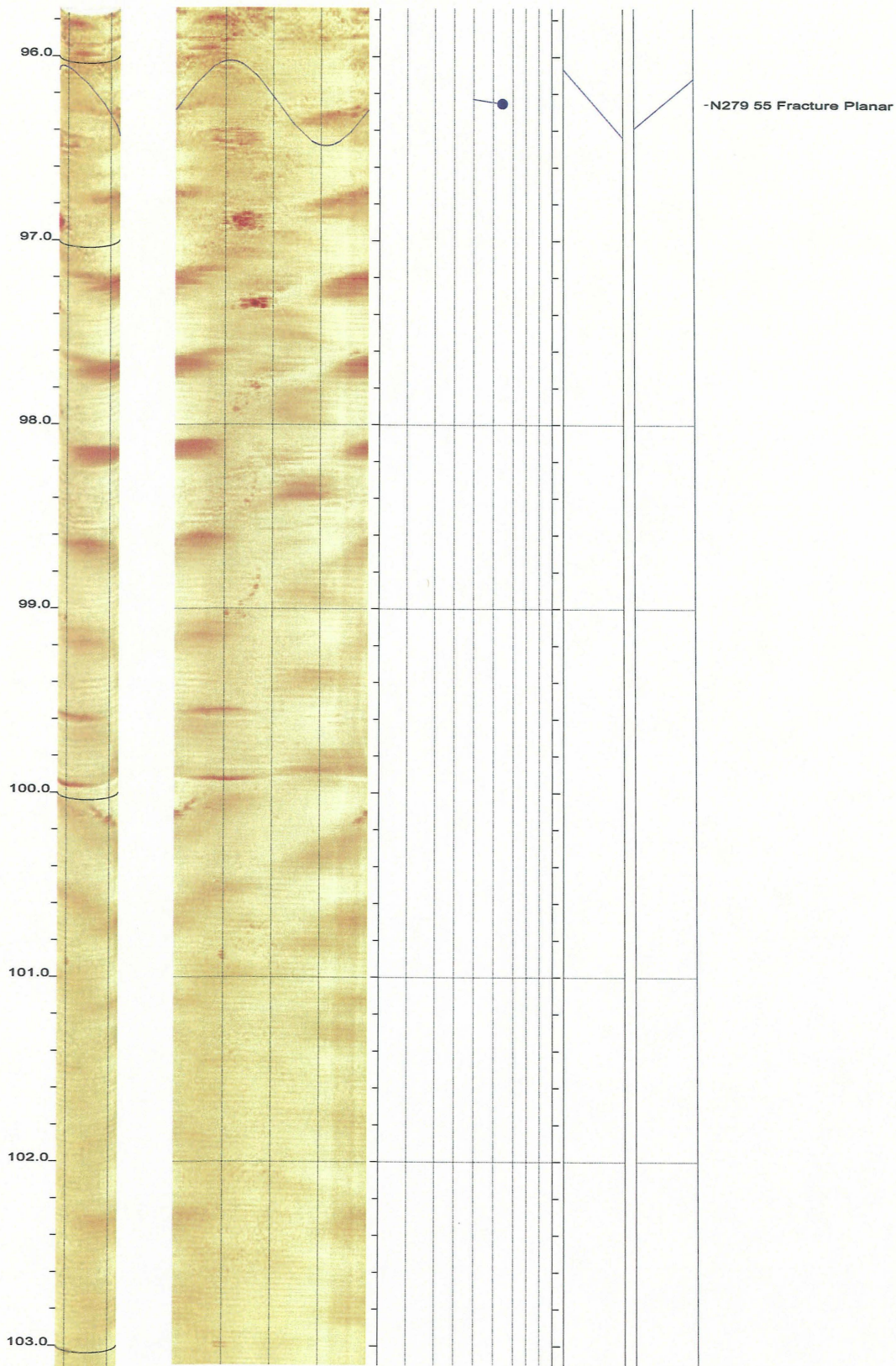


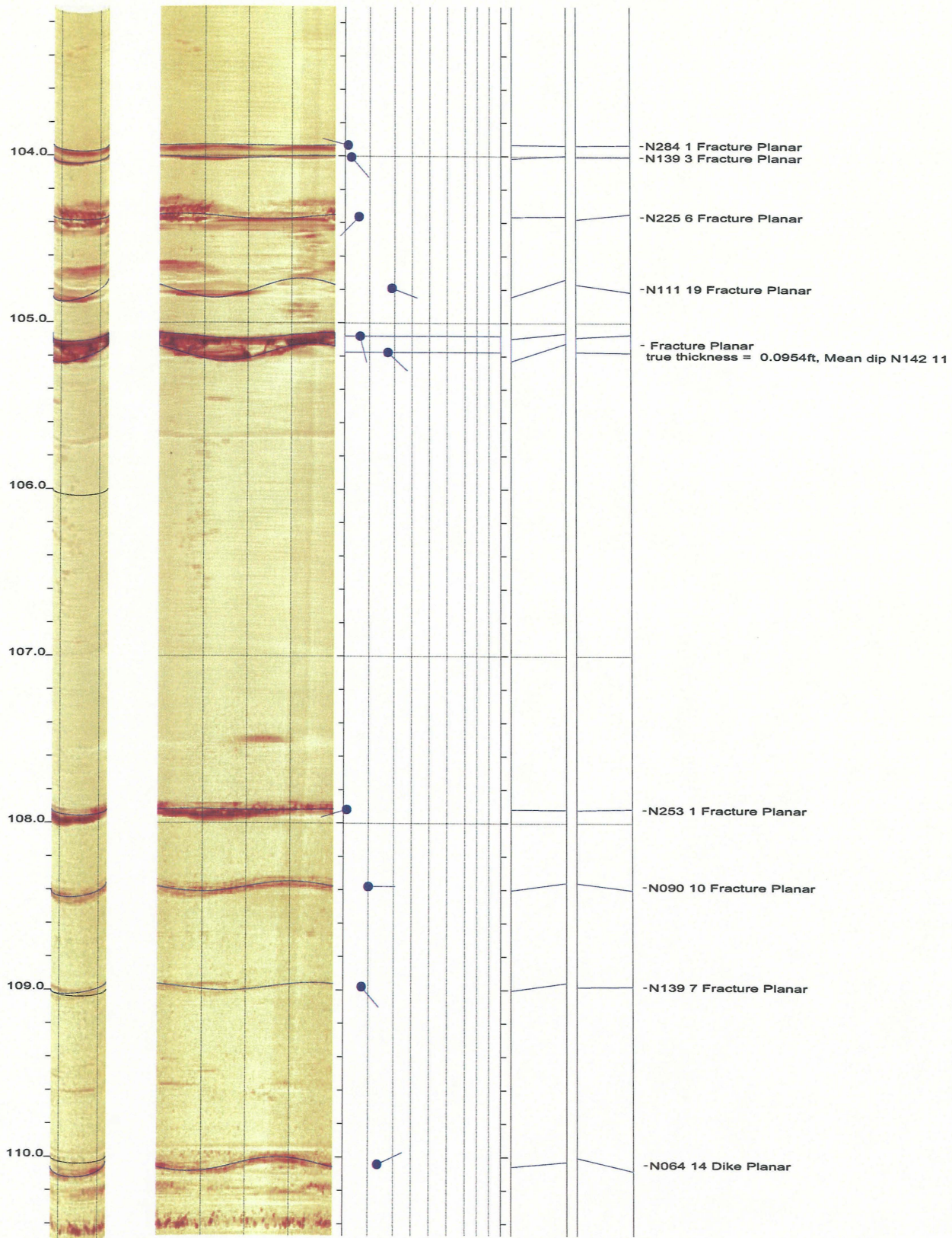


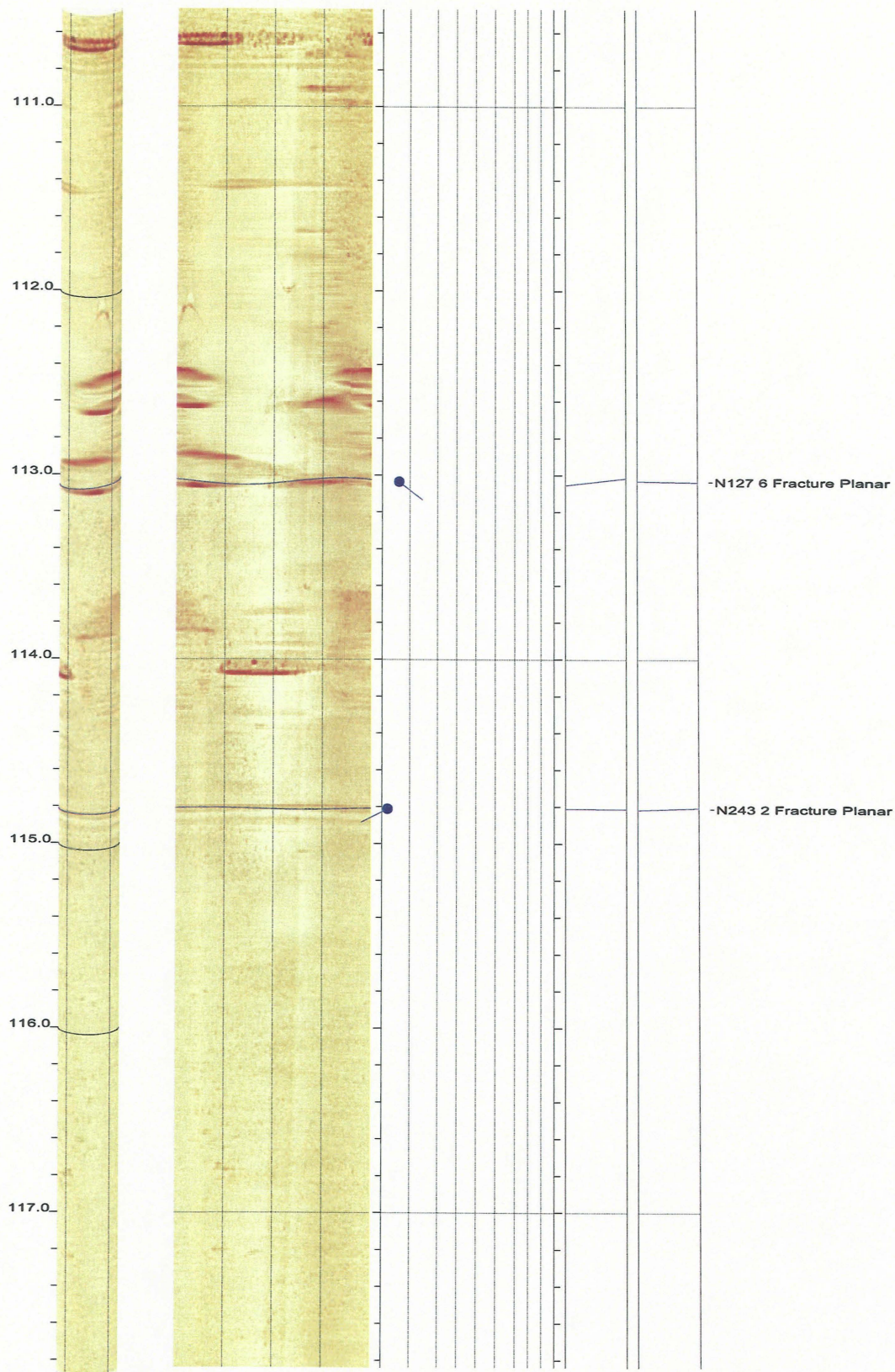


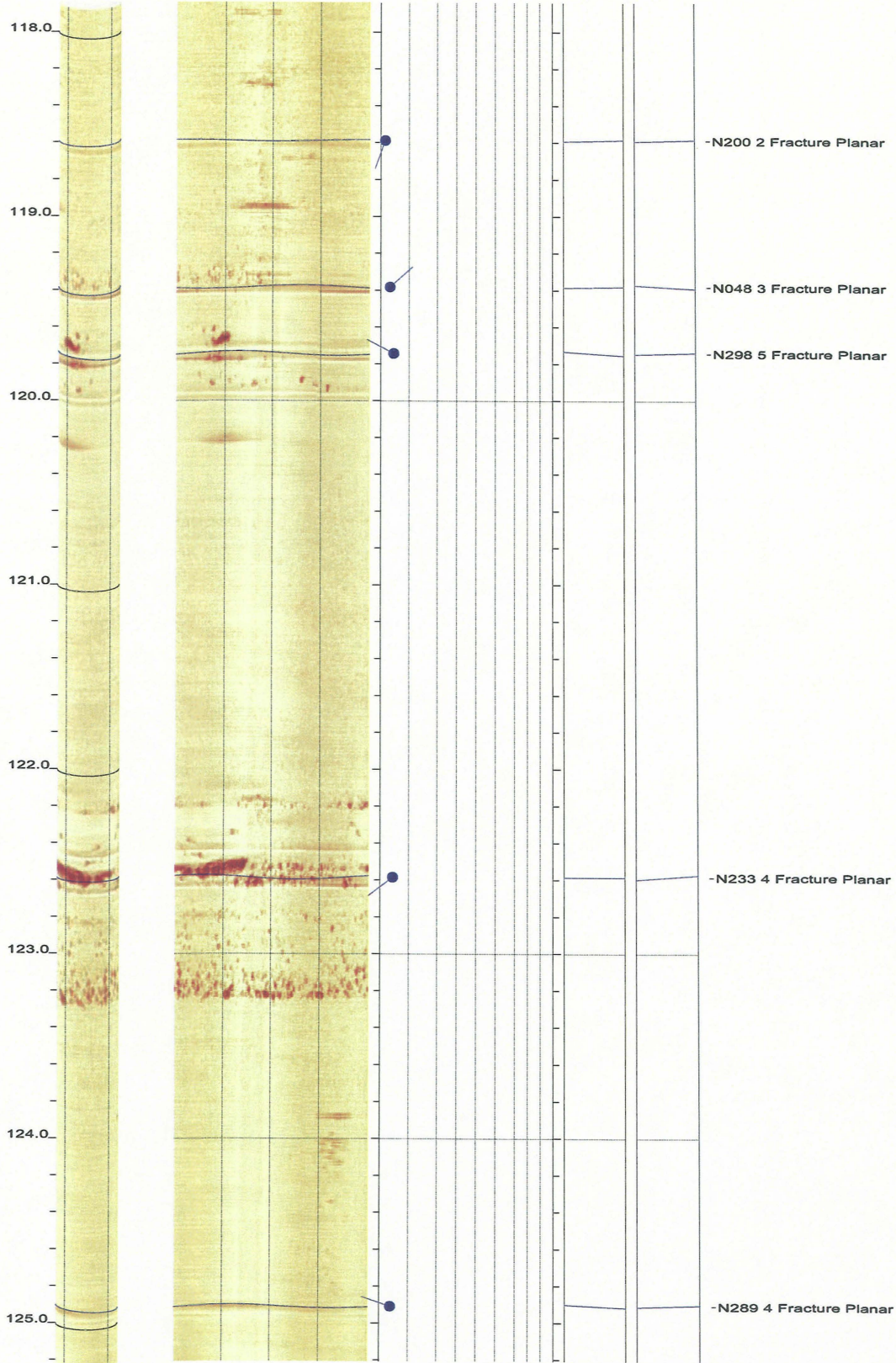


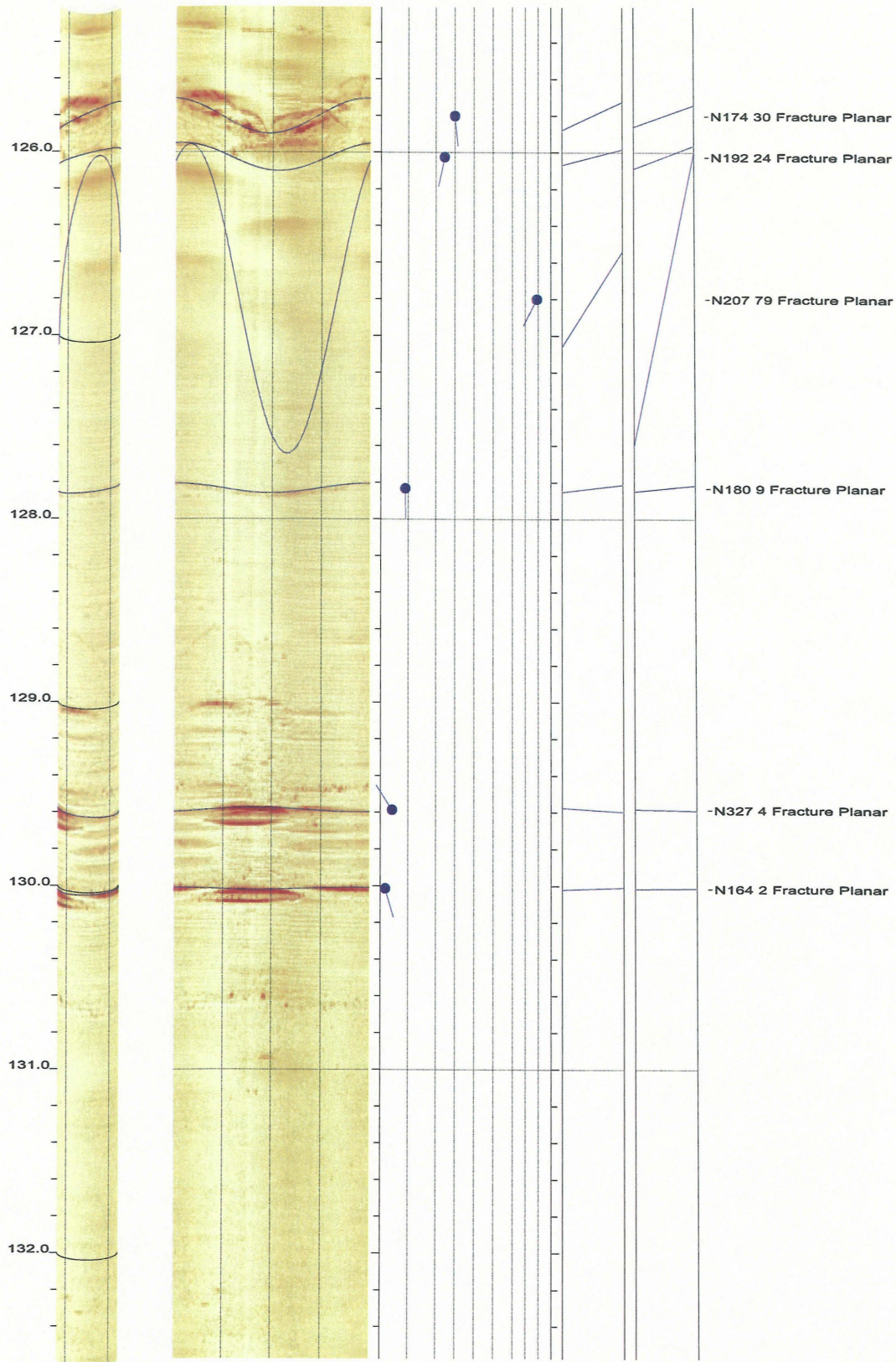


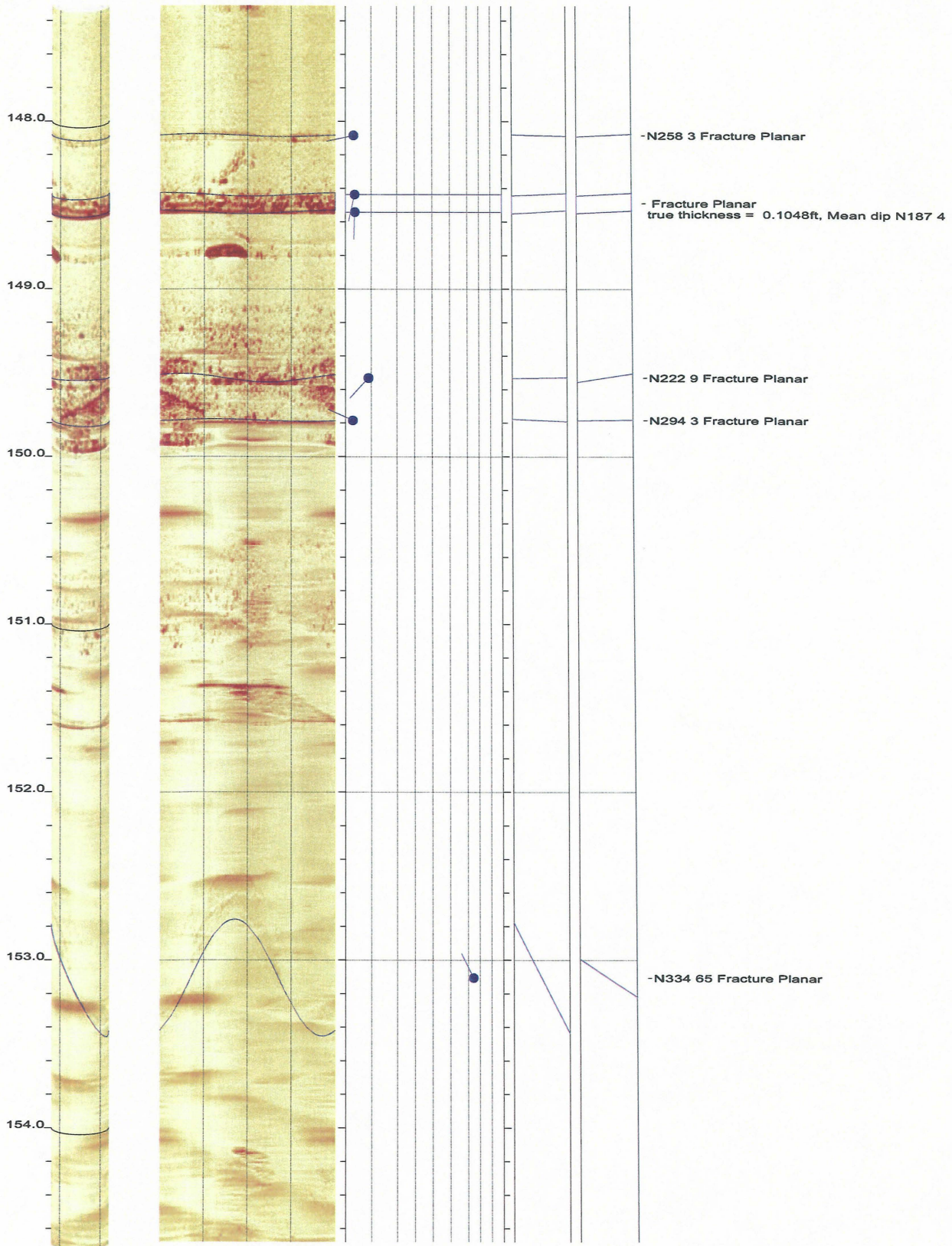


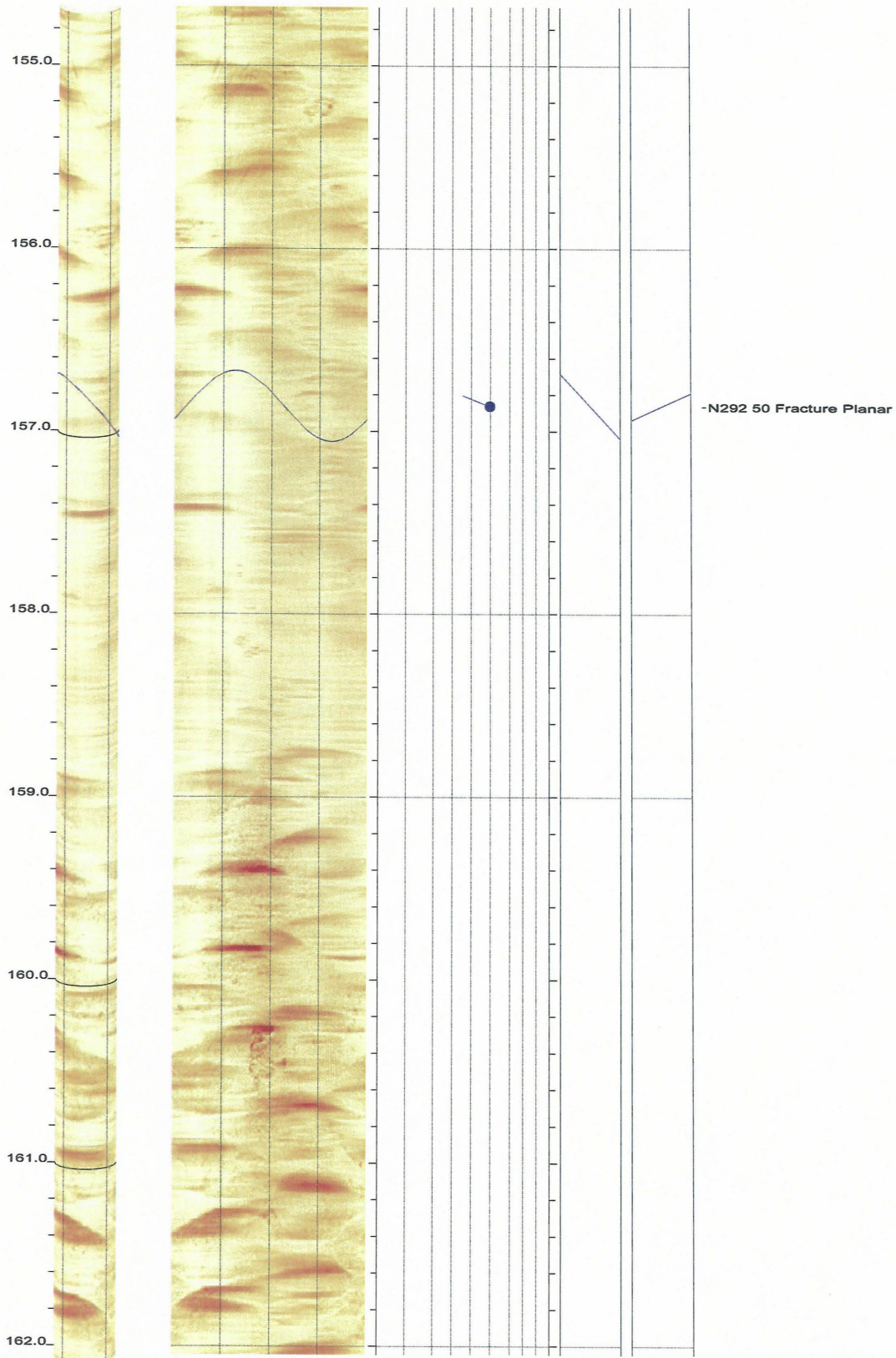


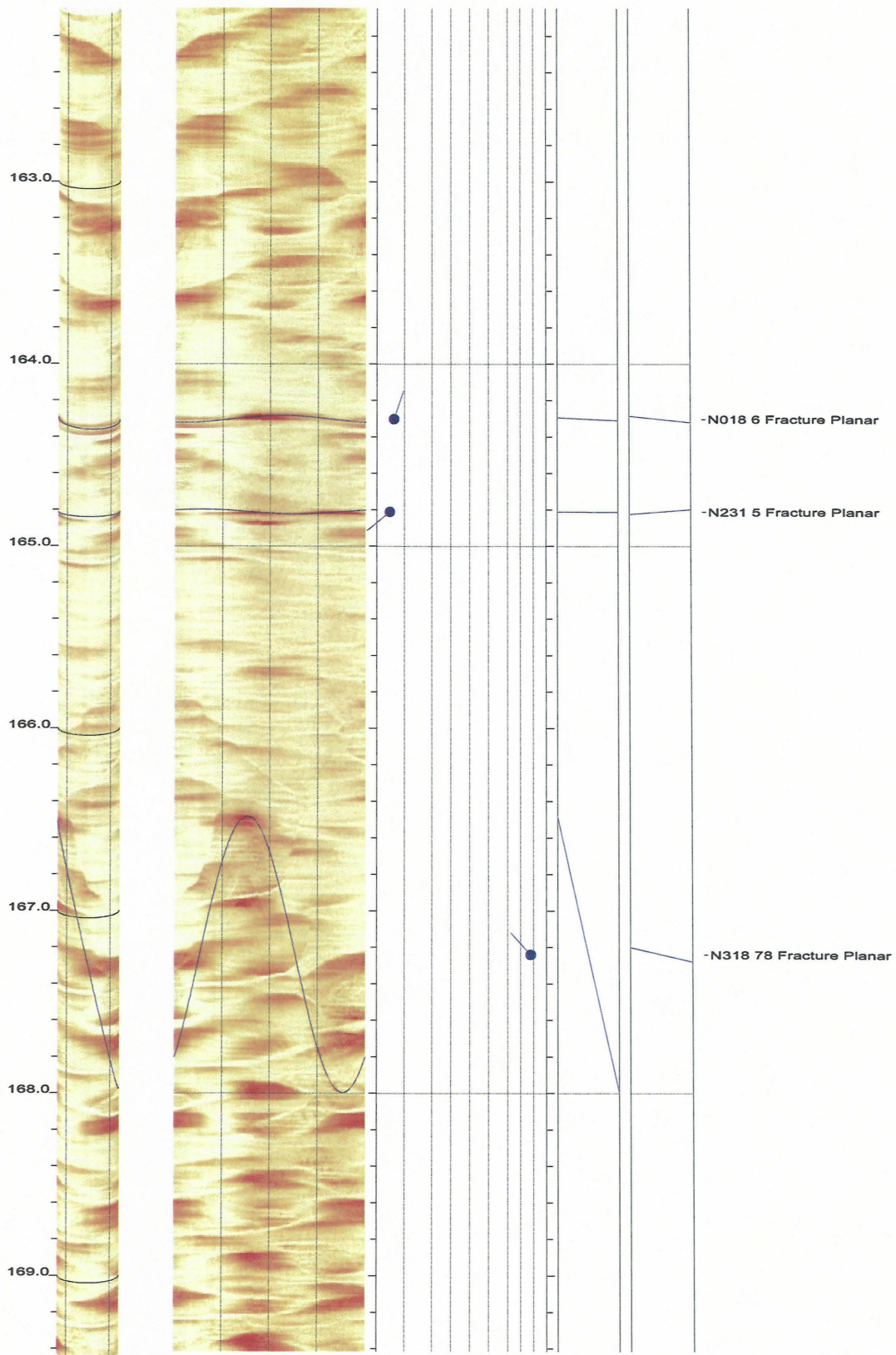


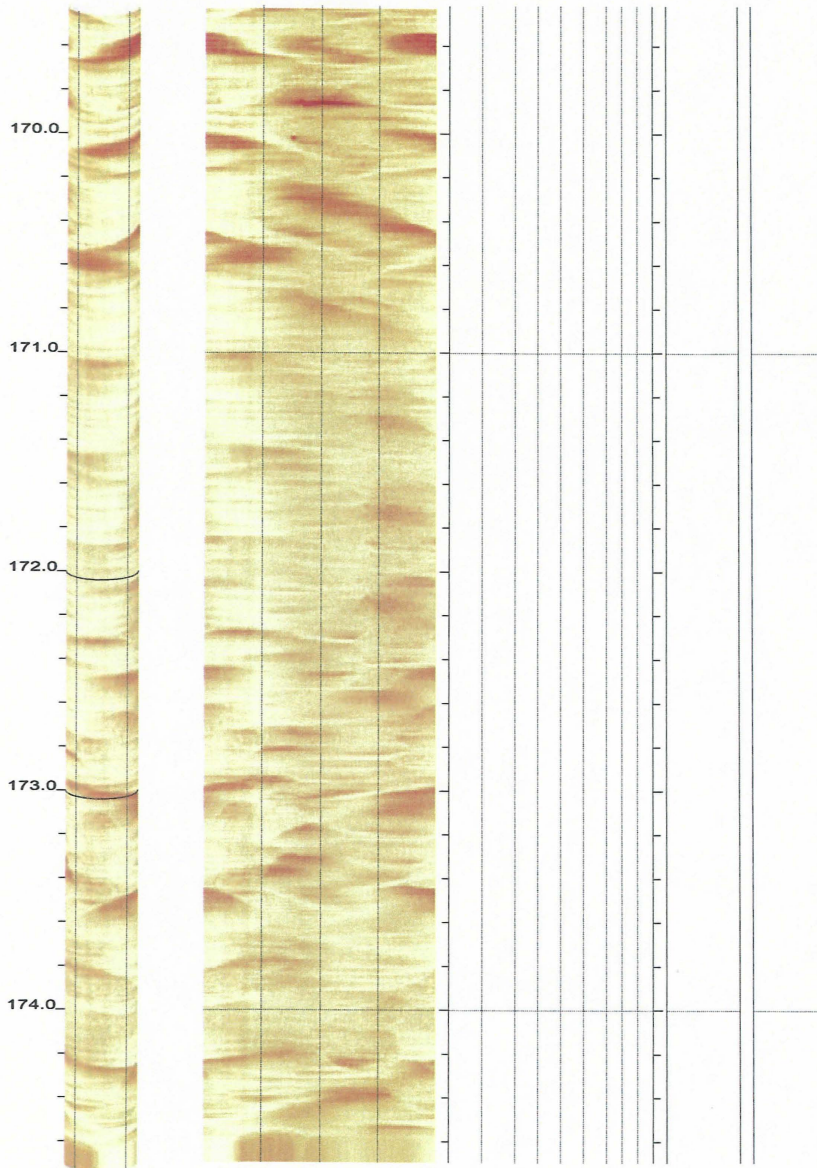














BHTV DATA PROCESSING
 RGLDIP vsn 6.2
 INTERPRETED BHTV DIPS LOG

04 Dec 2006

GEOVISION

Borehole: B-301

top of borehole.....

East: _

North: _

Elev: _

North ref. is true

Depth units are feet

Vertical scale: 1/10

Horiz scale = 1.00x Vert scale

Zone from 2.792 to 351.566ft

Format: BHTV-NESWN

Borehole diam: 3.996inch

Vertical = borehole-axis

Image: Amplitude

