



Admitted: 10/12/2011      Withdrawn:  
 Rejected:                      Stricken:

MACTEC Engineering and Consulting, Inc.  
 SCE&G COL Geotechnical Data Attachment E

Project 6234-06-3534  
 January 2007

Depth (feet)	V <sub>s</sub> (feet/sec)	V <sub>p</sub> (feet/sec)
6.6	640	1310
8.2	750	1410
9.8	780	1300
11.5	730	1370
13.1	720	1460
14.8	720	1380
16.4	720	1230
18.0	740	1260
19.7	740	1440
21.3	700	1300
23.0	760	1420
24.6	830	1670
26.3	820	1420
27.9	830	1540
29.5	830	1470
31.2	860	1520
32.8	880	1810
34.5	910	1760
36.1	900	2040
37.7	910	2040
39.4	950	2060
41.0	1000	2240
42.7	1080	2470
44.3	1130	2470
45.9	1230	3030
47.6	1640	3750
49.2	2040	4220
50.9	2360	5750
52.5	2280	6940
54.1	2900	8130
55.8	2650	7750
57.4	2950	7750
59.1	3120	7940
60.7	2300	6410
62.3	3300	10750
64.0	7410	15870
65.6	6170	13330
67.3	4690	9520
68.9	7090	12350
70.5	5290	10100
72.2	7330	13890
73.8	4580	9800
75.5	7580	14810
77.1	7370	14490
78.7	8710	15500
80.4	6410	13890
82.0	5490	11300
83.7	7750	14490
85.3	8390	14180
86.9	8460	17180

Depth (feet)	V <sub>s</sub> (feet/sec)	V <sub>p</sub> (feet/sec)
88.6	8570	17010
90.2	9860	17920
91.9	10100	18520
93.5	10040	18940
95.1	10160	18120
96.8	9550	17360
98.4	9690	16670
100.1	10320	17010
101.7	9360	17730
103.4	8890	18120
105.0	9440	18120
106.6	9210	18120
108.3	9780	17360
109.9	7920	17010
111.6	7580	16180
113.2	9690	19160
114.8	9610	17730
116.5	9520	17010
118.1	10100	17540
119.8	10070	17730
121.4	10130	17180
123.0	9720	18120
124.7	9830	17540
126.3	9780	16670
128.0	9290	18520
129.6	9580	17360
131.2	10220	17540
132.9	9520	17010
134.5	8940	15290
136.2	9610	18320
137.8	9610	17360
139.4	9550	17360
141.1	9830	17730
142.7	9630	17730
144.4	9630	16500
146.0	9750	16500
147.6	9860	16840
149.3	10010	17920
150.9	10130	16840
152.6	10130	17540
154.2	10350	17540
155.8	10480	17360
157.5	10580	17180
159.1	10650	17540
160.8	10720	18940
162.4	10680	17540
164.0	10580	19160
165.7	10480	17920
167.3	10520	16840
169.0	10520	18730

Depth (feet)	V <sub>s</sub> (feet/sec)	V <sub>p</sub> (feet/sec)
170.6	10450	16840
172.2	10520	17010
173.9	10550	16500
175.5	10650	17360
177.2	10520	16670
178.8	10450	17180
180.5	10450	17010
182.1	10450	16840
183.7	10350	17010
185.4	10420	17730
187.0	10480	17730
188.7	10190	17920
190.3	10220	17920
191.9	10580	17730

Table 6. Boring B-206, Suspension R1-R2 depths and P- and S<sub>H</sub>-wave velocities

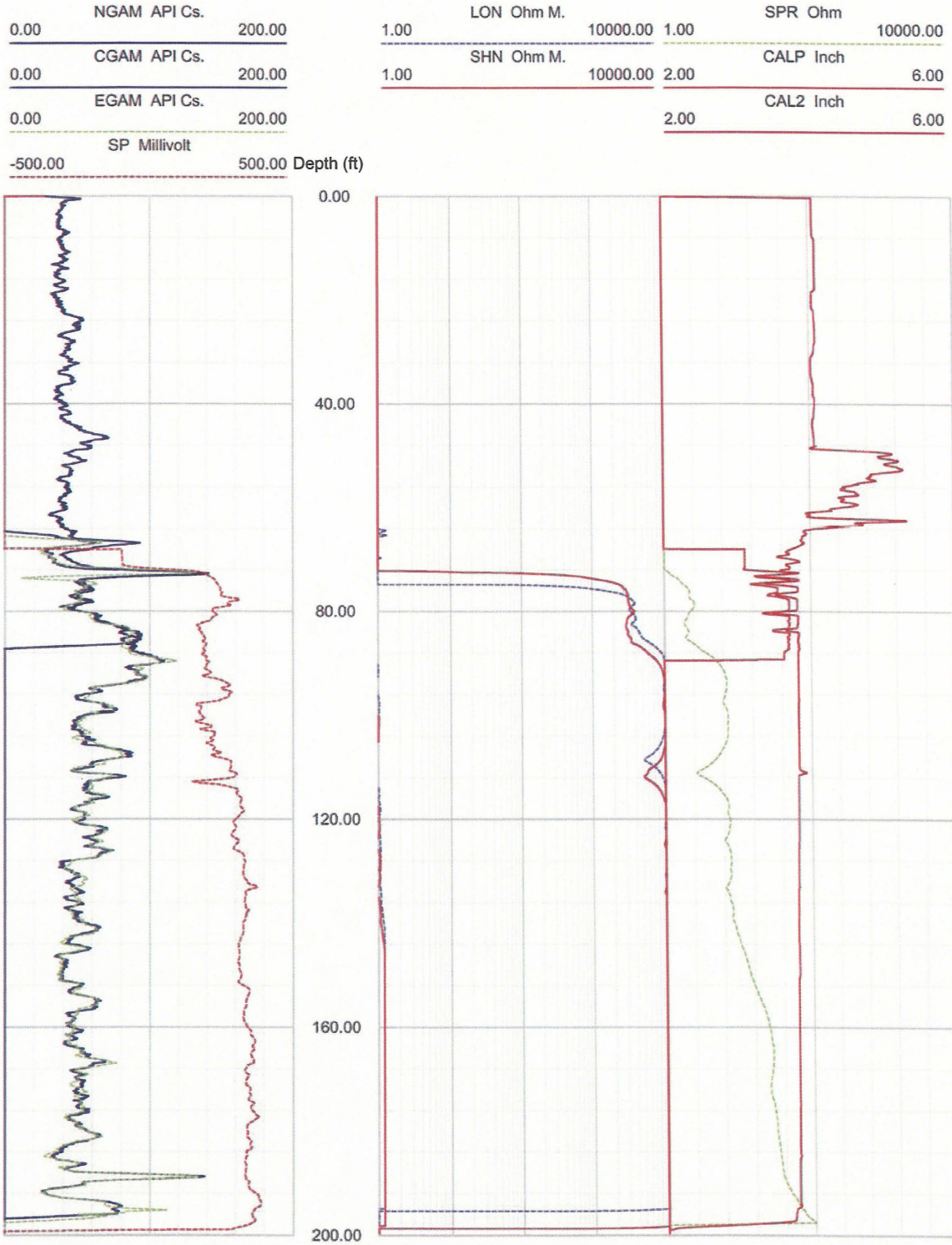
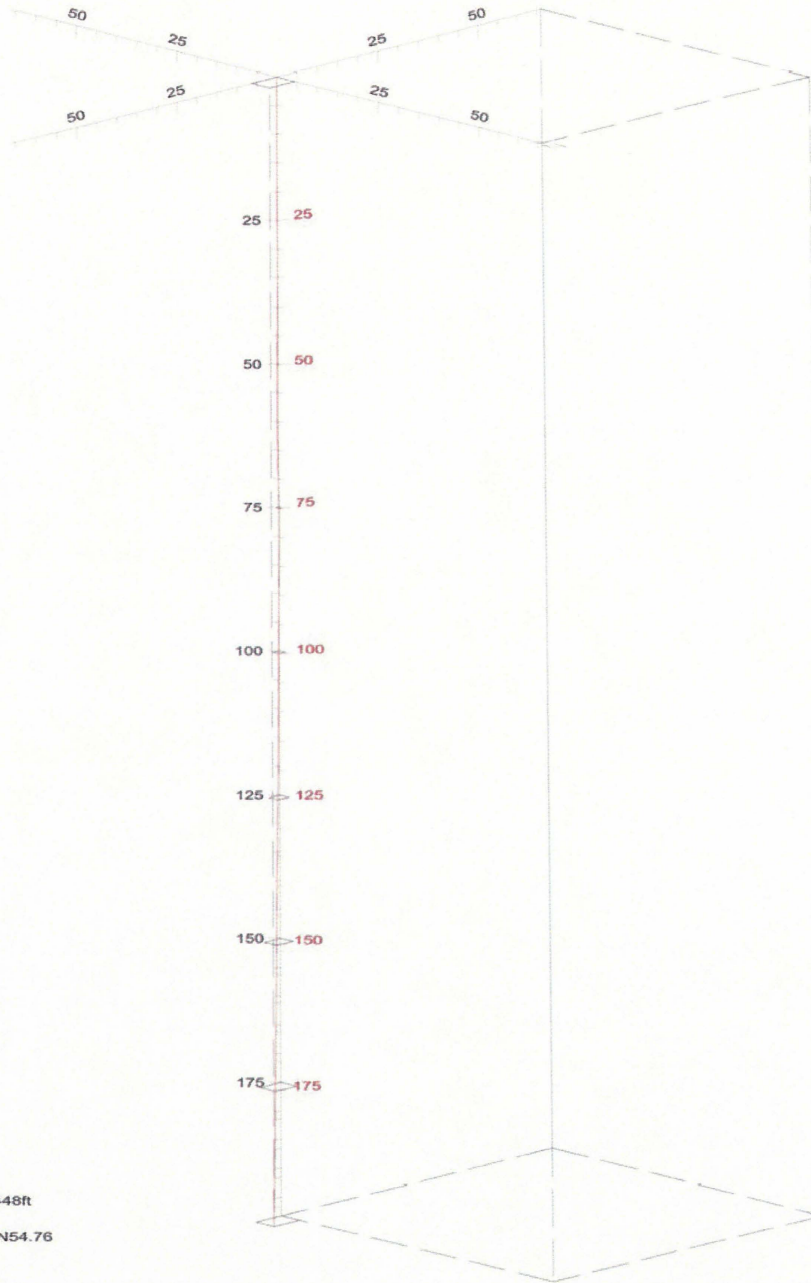


Figure 9. Boring B-206, Caliper, Natural gamma, Resistivity and SP logs

Deviated borehole in orthographic projection, viewed from N45



Borehole: B-206  
Zone from: 0.000 - 198.448ft  
North ref is true  
Mean deviation: 2.21 to N54.76  
End coordinates .....  
North: 4.423  
East : 6.243  
Down : 198.218  
Azimuth of end: N54.69  
Distance start-end: 7.651ft  
Viewpoint: N45  
Data extrapolated to the surface from -0.304ft  
30 Sep 2006

Figure 10. Boring B-206, Deviation Projection (dimensions in feet)

### SCE&G COL Borehole B-207 Receiver to Receiver $V_s$ and $V_p$ Analysis

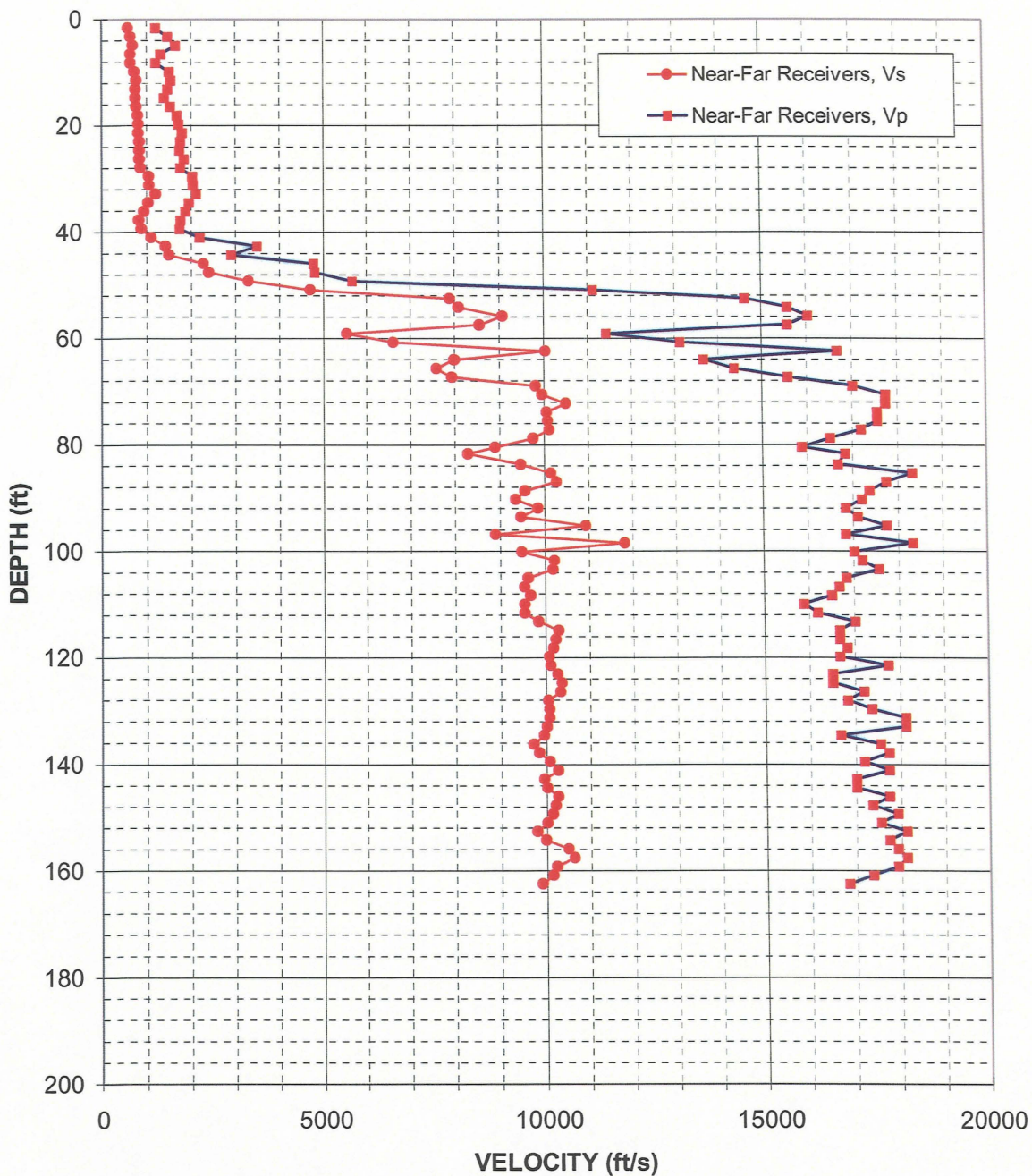


Figure 11. Boring B-207, Suspension R1-R2 P- and  $S_H$ -wave velocities

Depth (feet)	V <sub>s</sub> (feet/sec)	V <sub>p</sub> (feet/sec)	Depth (feet)	V <sub>s</sub> (feet/sec)	V <sub>p</sub> (feet/sec)
1.6	580	1200	83.7	9460	16670
3.3	640	1460	85.3	10130	18320
4.9	700	1630	86.9	10260	17730
6.6	640	1310	88.6	9550	17360
8.2	630	1200	90.2	9340	17180
9.8	730	1500	91.9	9830	16840
11.5	770	1530	93.5	9460	17090
13.1	750	1460	95.1	10930	17730
14.8	750	1390	96.8	8890	16840
16.4	770	1520	98.4	11820	18320
18.0	800	1670	100.1	9470	17010
19.7	820	1710	101.7	10190	17180
21.3	810	1780	103.4	10160	17540
23.0	840	1750	105.0	9610	16840
24.6	840	1730	106.6	9520	16670
26.3	830	1830	108.3	9660	16500
27.9	860	1750	109.9	9520	15870
29.5	1050	2010	111.6	9520	16180
31.2	1060	2020	113.2	9830	17010
32.8	1200	2100	114.8	10290	16670
34.5	1030	1940	116.5	10220	16670
36.1	930	1860	118.1	10160	16840
37.7	830	1750	119.8	10070	16670
39.4	880	1730	121.4	10100	17730
41.0	1100	2180	123.0	10260	16500
42.7	1420	3470	124.7	10350	16500
44.3	1490	2900	126.3	10320	17180
45.9	2270	4760	128.0	10040	16840
47.6	2390	4800	129.6	10070	17360
49.2	3280	5650	131.2	10070	18120
50.9	4690	11110	132.9	10010	18120
52.5	7890	14620	134.5	9950	16670
54.1	8080	15580	136.2	9720	17540
55.8	9070	16030	137.8	9830	17730
57.4	8550	15580	139.4	10070	17180
59.1	5530	11420	141.1	10260	17730
60.7	6600	13120	142.7	9950	17010
62.3	10030	16670	144.4	10010	17010
64.0	7980	13660	146.0	10260	17730
65.6	7580	14370	147.6	10190	17360
67.3	7940	15580	149.3	10130	17920
68.9	9800	17010	150.9	10010	17540
70.5	9950	17730	152.6	9780	18120
72.2	10480	17730	154.2	9980	17730
73.8	10040	17540	155.8	10480	17920
75.5	10070	17540	157.5	10620	18120
77.1	10100	17180	159.1	10220	17920
78.7	9730	16500	160.8	10130	17360
80.4	8890	15870	162.4	9890	16840
81.7	8280	16840			

Table 7. Boring B-207, Suspension R1-R2 depths and P- and S<sub>H</sub>-wave velocities

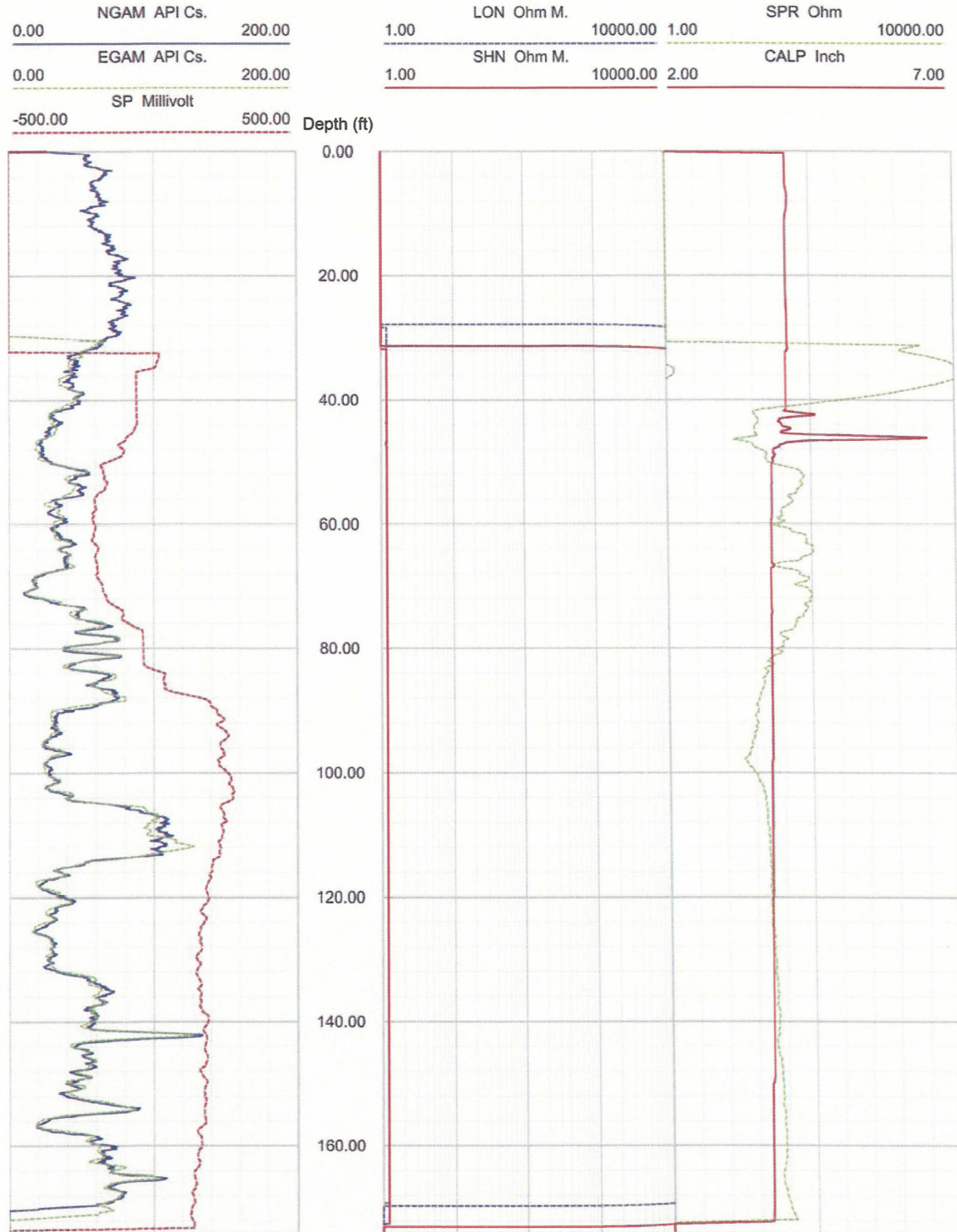
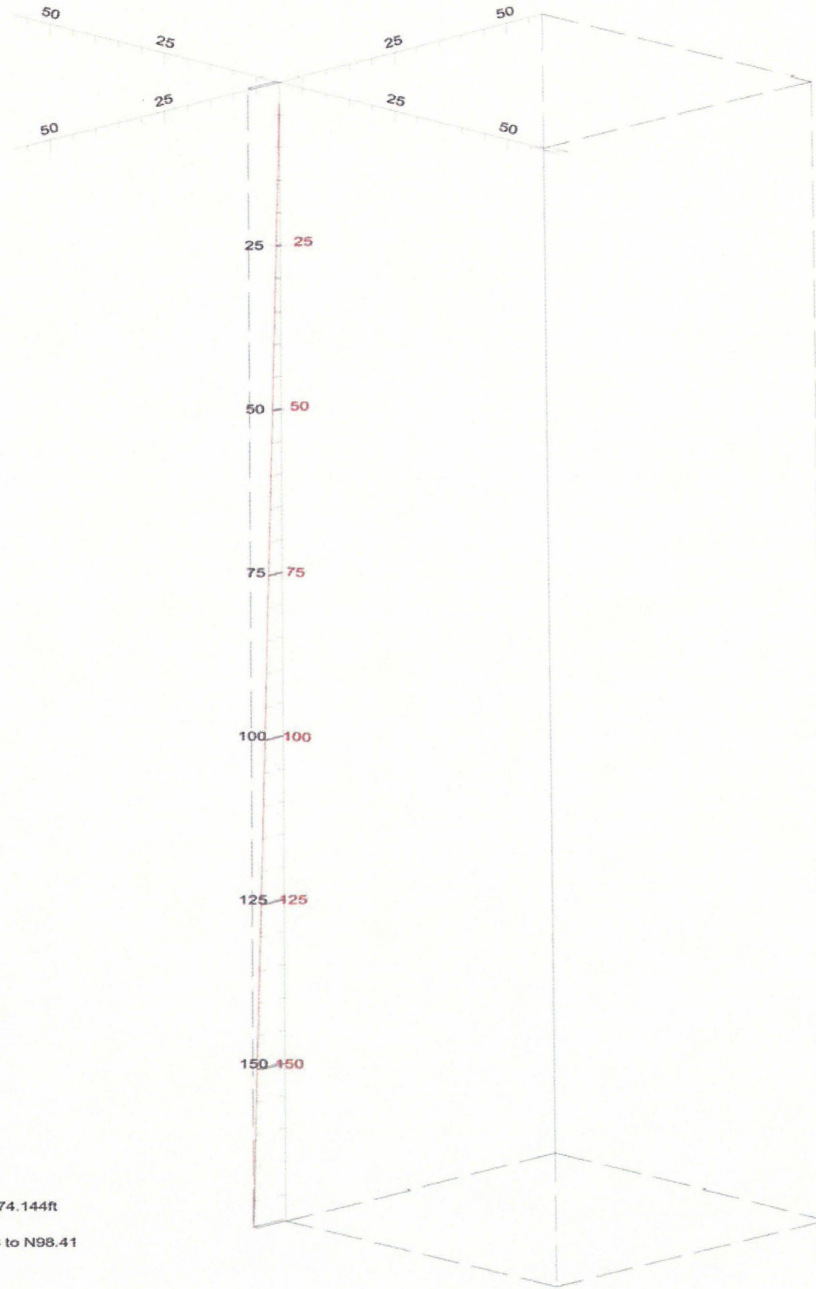


Figure 12. Boring B-207, Caliper, Natural gamma, Resistivity and SP logs

Deviated borehole in orthographic projection, viewed from N45



Borehole: B-207  
Zone from: 3.232 - 174.144ft  
North ref is true  
Mean deviation: 1.98 to N98.41  
End coordinates .....  
North: -0.881  
East: 5.960  
Down: 174.036  
Azimuth of end: N98.41  
Distance start-end: 6.025ft  
Viewpoint: N45  
Data extrapolated to the surface from 3.232ft  
15 Sep 2006

Figure 13. Boring B-207, Deviation Projection (dimensions in feet)

### SCE&G COL Borehole B-211 Receiver to Receiver $V_s$ and $V_p$ Analysis

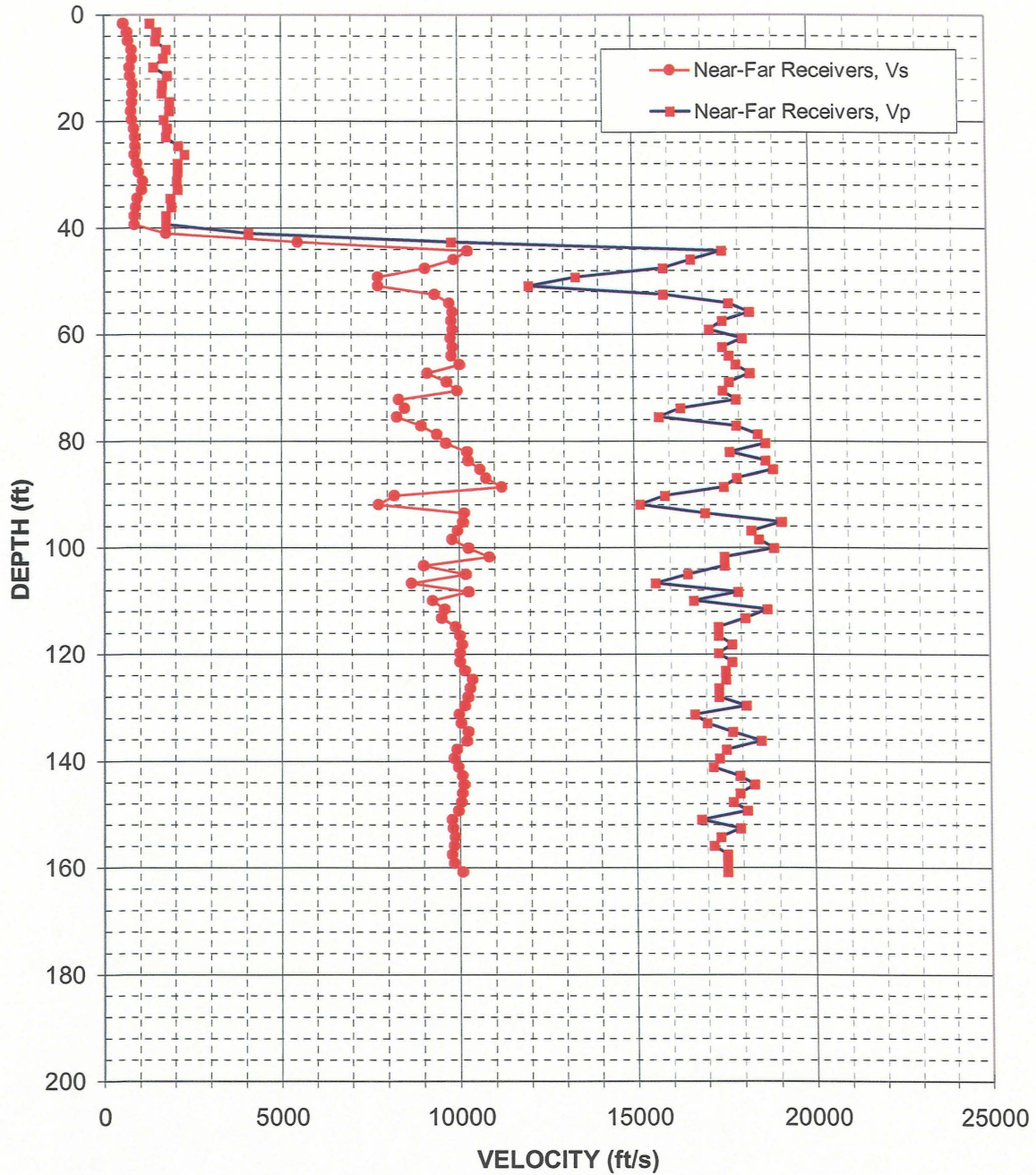


Figure 14. Boring B-211, Suspension R1-R2 P- and  $S_H$ -wave velocities



Depth (feet)	V <sub>s</sub> (feet/sec)	V <sub>p</sub> (feet/sec)	Depth (feet)	V <sub>s</sub> (feet/sec)	V <sub>p</sub> (feet/sec)
1.6	520	1260	83.7	10260	18730
3.3	630	1460	85.3	10580	18940
4.9	660	1440	86.9	10750	17920
6.6	750	1740	88.6	11200	17540
8.2	770	1650	90.2	8190	15870
9.8	710	1380	91.9	7750	15150
11.5	720	1750	93.5	10130	17010
13.1	790	1620	95.1	10100	19160
14.8	780	1600	96.8	9950	18320
16.4	770	1830	98.4	9800	18520
18.0	740	1810	100.1	10260	18940
19.7	770	1670	101.7	10840	17540
21.3	820	1750	103.4	9010	17540
23.0	860	1730	105.0	10180	16500
24.6	870	2070	106.6	8660	15580
26.3	840	2250	108.3	10260	17920
27.9	910	2060	109.9	9260	16670
29.5	960	2060	111.6	9580	18730
31.2	1080	2030	113.2	9500	18120
32.8	1040	2060	114.8	9890	17360
34.5	920	1850	116.5	10010	17360
36.1	880	1880	118.1	10070	17730
37.7	840	1730	119.8	10010	17360
39.4	840	1730	121.4	10010	17730
41.0	1740	4070	123.0	10130	17540
42.7	5460	9800	124.7	10350	17540
44.3	10260	17540	126.3	10290	17360
45.9	9880	16670	128.0	10220	17360
47.6	9070	15870	129.6	10130	18120
49.2	7750	13330	131.2	9980	16670
50.9	7750	11990	132.9	10040	17010
52.5	9340	15870	134.5	10220	17730
54.1	9750	17730	136.2	10190	18520
55.8	9830	18320	137.8	9920	17540
57.4	9800	17540	139.4	9830	17360
59.1	9830	17180	141.1	9950	17180
60.7	9780	18120	142.7	10070	17920
62.3	9830	17540	144.4	10100	18320
64.0	9800	17730	146.0	10070	17920
65.6	10030	17920	147.6	10040	17730
67.3	9130	18320	149.3	9950	18120
68.9	9660	17730	150.9	9780	16840
70.5	9950	17540	152.6	9800	17920
72.2	8330	17920	154.2	9860	17360
73.8	8500	16340	155.8	9830	17180
75.5	8280	15720	157.5	9780	17540
77.1	8950	17920	159.1	9830	17540
78.7	9390	18520	160.8	10070	17540
80.4	9630	18730			
82.0	10220	17730			

Table 8. Boring B-211, Suspension R1-R2 depths and P- and S<sub>H</sub>-wave velocities

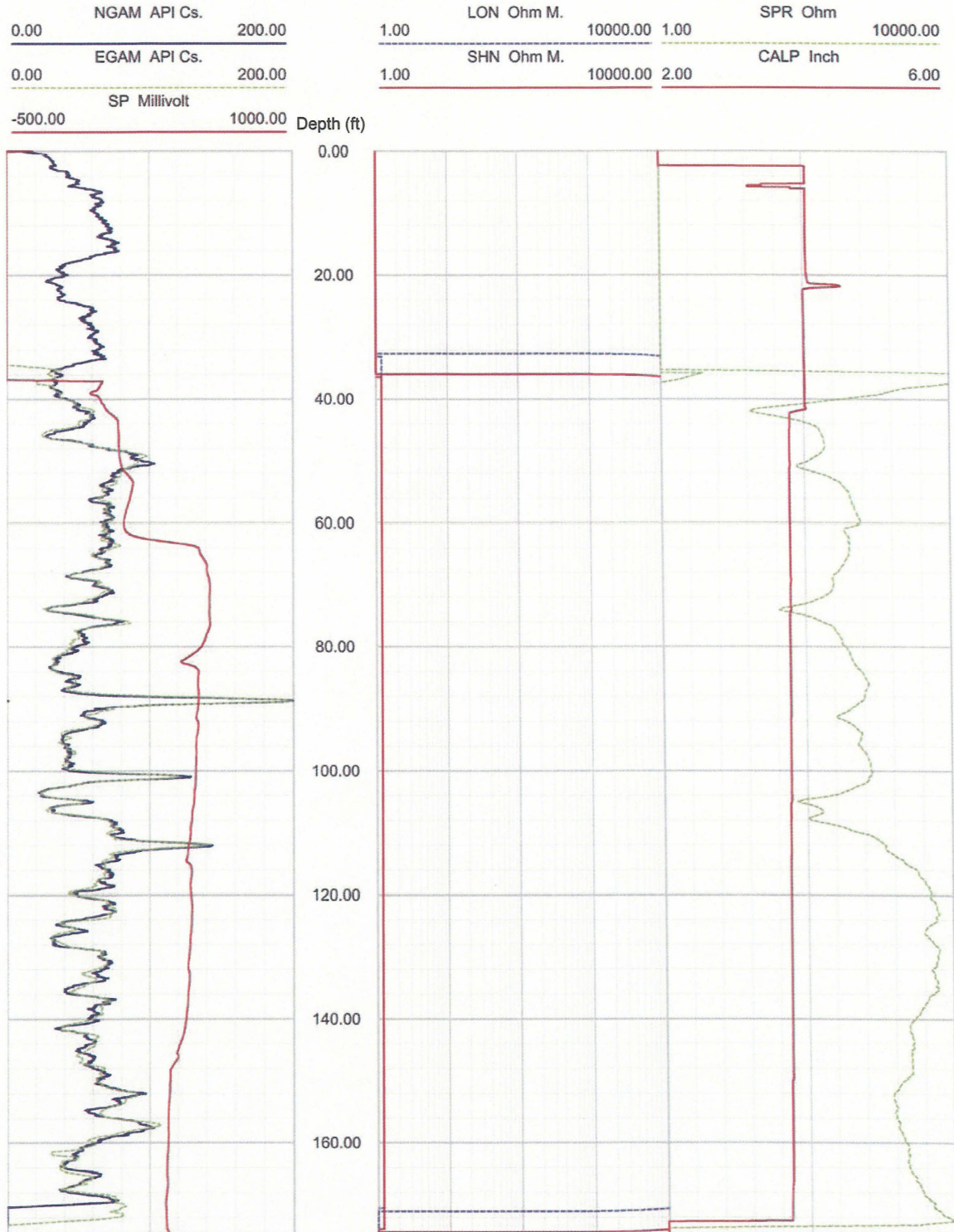


Figure 15. Boring B-211, Caliper, Natural gamma, Resistivity and SP logs

Deviated borehole in orthographic projection, viewed from N45

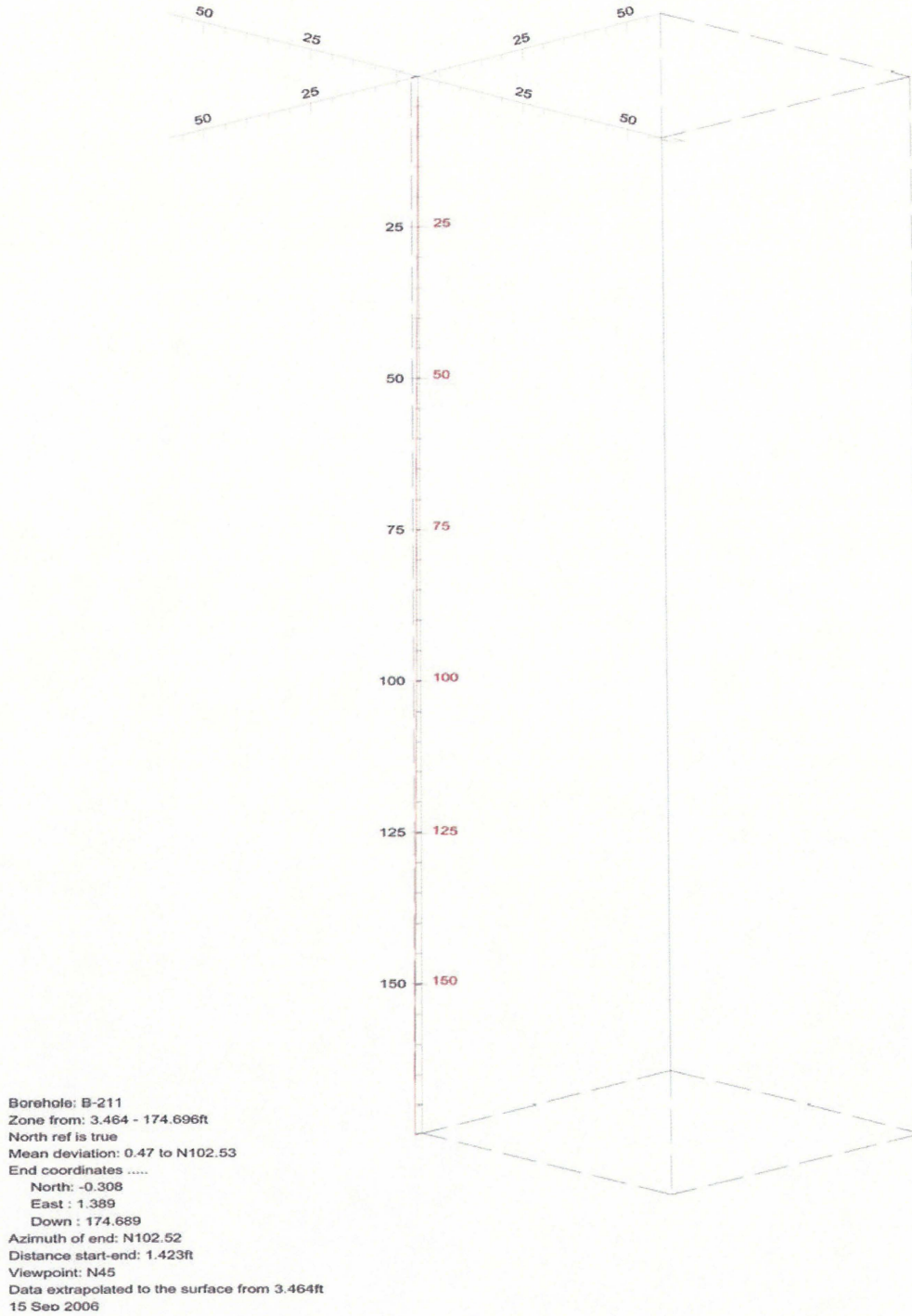


Figure 16. Boring B-211, Deviation Projection (dimensions in feet)

### SCE&G COL Borehole B-301 Receiver to Receiver $V_s$ and $V_p$ Analysis

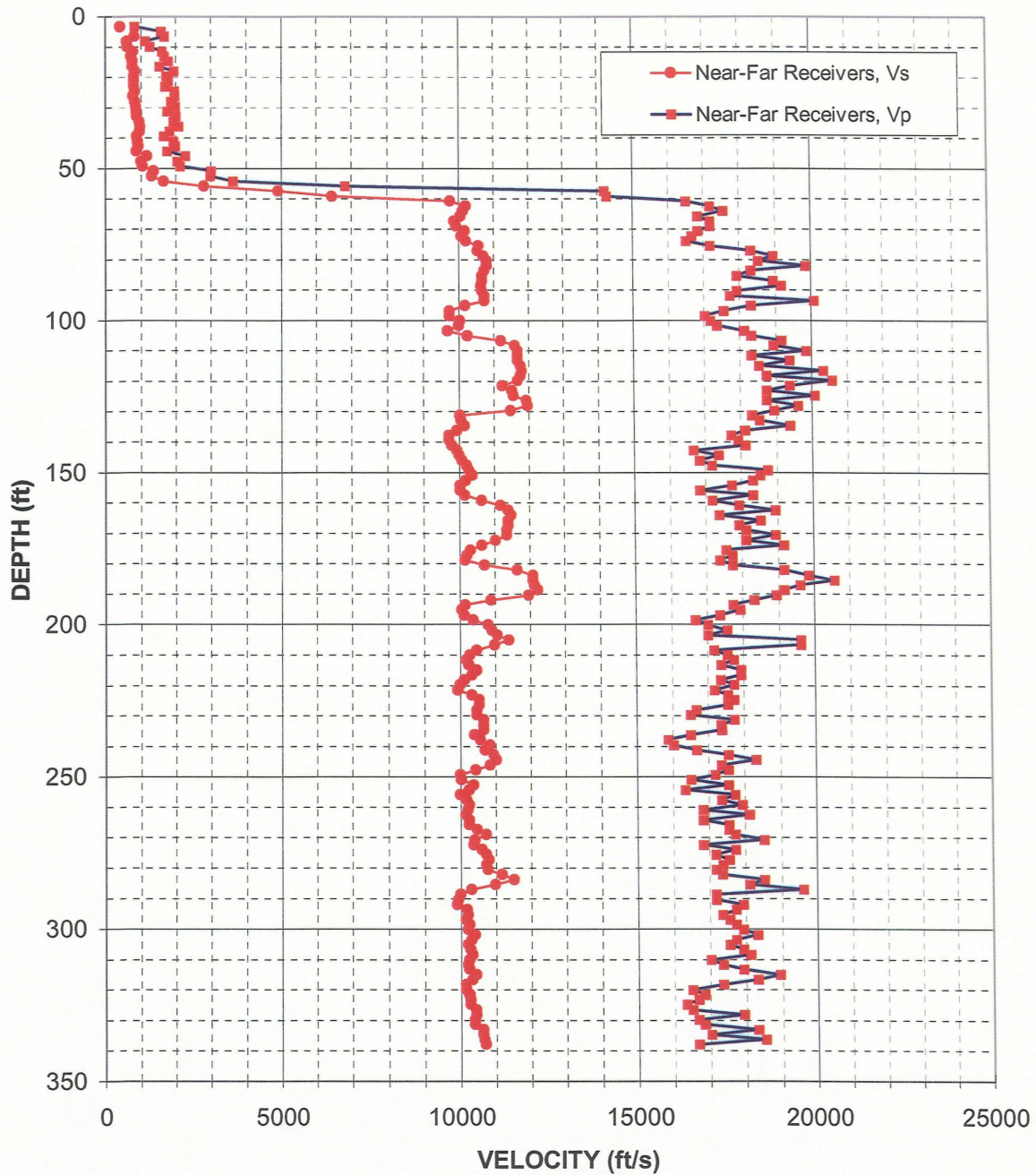


Figure 17. Boring B-301, Suspension R1-R2 P- and  $S_H$ -wave velocities

Depth (feet)	V <sub>s</sub> (feet/sec)	V <sub>p</sub> (feet/sec)	Depth (feet)	V <sub>s</sub> (feet/sec)	V <sub>p</sub> (feet/sec)	Depth (feet)	V <sub>s</sub> (feet/sec)	V <sub>p</sub> (feet/sec)
3.3	400	790	85.3	10650	17920	167.3	11380	17920
4.9	-	1560	86.9	10650	18940	169.0	11340	18120
6.6	800	1650	88.6	10620	19160	170.6	11340	18940
8.2	590	1100	90.2	10650	17920	172.2	11000	18120
9.8	600	1230	91.9	10720	17730	173.9	10620	19160
11.5	760	1590	93.5	10720	20080	175.5	10290	17540
13.1	700	1650	95.1	10160	18320	177.2	10190	17730
14.8	740	1760	96.8	9720	17540	178.8	10130	17360
16.4	740	1520	98.4	9720	17010	180.5	10680	17730
18.0	820	1930	100.1	10010	17180	182.1	11610	19160
19.7	790	1710	101.7	9980	17360	183.7	12080	19840
21.3	790	1760	103.4	9660	18120	185.4	12080	20580
23.0	790	1680	105.0	10220	18320	187.0	12120	19610
24.6	820	1940	106.6	11190	19160	188.7	12210	19160
26.3	760	1950	108.3	11570	18940	190.3	11950	18940
27.9	810	1840	109.9	11660	19840	191.9	10860	18320
29.5	840	1970	111.6	11660	18320	193.6	10130	17730
31.2	850	1730	113.2	11660	19380	195.2	10040	17920
32.8	870	1980	114.8	11740	18520	196.9	10100	17360
34.5	930	1900	116.5	11780	20330	198.5	10350	16670
36.1	970	2060	118.1	11740	18730	200.1	10790	17010
37.7	940	1800	119.8	11660	20580	201.8	10890	17540
39.4	870	1640	121.4	11220	19380	203.4	11040	17010
41.0	890	1920	123.0	11490	18730	205.1	11380	19610
42.7	900	1970	124.7	11530	20080	206.7	10960	19610
44.3	850	1740	126.3	11900	18730	208.3	10450	17180
45.9	1150	2250	128.0	11950	19610	210.0	10260	17540
47.6	990	2020	129.6	11450	18940	211.6	10160	17730
49.2	1030	2110	131.2	10010	18320	213.3	10220	17360
50.9	1350	3000	132.9	10040	18520	214.9	10450	17920
52.5	1290	2980	134.5	10130	19380	216.5	10320	17920
54.1	1630	3620	136.2	9920	18120	218.2	10100	17360
55.8	2790	6800	137.8	9690	17730	219.8	9980	17730
57.4	4900	14180	139.4	9690	17920	221.5	9920	17180
59.1	6440	14250	141.1	9780	18120	223.1	10320	17540
60.7	9750	16500	142.7	9920	16670	224.7	10520	17730
62.3	10190	17180	144.4	9980	17360	226.4	10520	17540
64.0	10100	17540	146.0	10070	16840	228.0	10450	16670
65.6	10040	16840	147.6	10190	17180	229.7	10450	16500
67.3	9860	17180	149.3	10260	18730	231.3	10650	17730
68.9	9920	17180	150.9	10350	18520	232.9	10650	17360
70.5	10160	16840	152.6	10160	18320	234.6	10650	17360
72.2	10070	16670	154.2	10010	17730	236.2	10380	16500
73.8	10190	16500	155.8	10010	16840	237.9	10550	15870
75.5	10550	17180	157.5	10130	18320	239.5	10820	16030
77.1	10520	18320	159.1	10620	17180	241.1	10680	16670
78.7	10680	18940	160.8	11150	17920	242.8	10930	17540
80.4	10790	18520	162.4	11380	18940	244.4	11000	18320
82.0	10790	19840	164.0	11450	17360	246.1	10820	17360
83.7	10720	18320	165.7	11380	18520	247.7	10420	17540

Table 9. Boring B-301, Suspension R1-R2 depths and P- and S<sub>H</sub>-wave velocities

Depth (feet)	V <sub>s</sub> (feet/sec)	V <sub>p</sub> (feet/sec)	Depth (feet)	V <sub>s</sub> (feet/sec)	V <sub>p</sub> (feet/sec)
249.3	9980	17180	331.4	10380	16840
251.0	10010	16500	333.0	10620	18320
252.6	10350	17540	334.7	10620	17010
254.3	10220	16340	336.3	10650	18520
255.9	9980	17730	337.9	10680	16670
257.6	10160	17360			
259.2	10220	17920			
260.8	10190	16840			
262.5	10130	18120			
264.1	10220	16840			
265.8	10220	17540			
267.4	10450	17540			
269.0	10720	17730			
270.7	10380	18520			
272.3	10350	16840			
274.0	10580	17730			
275.6	10720	17180			
277.2	10790	17540			
278.9	10720	17360			
280.5	10750	17180			
282.2	11150	17360			
283.8	11490	18520			
285.4	10960	18120			
287.1	10290	19610			
288.7	9980	17180			
290.4	9920	17180			
292.0	9890	17920			
293.6	10160	17730			
295.3	10190	17360			
296.9	10130	17540			
298.6	10220	17730			
300.2	10190	17920			
301.8	10380	18320			
303.5	10290	17730			
305.1	10190	17540			
306.8	10260	17920			
308.4	10320	18120			
310.0	10220	17010			
311.7	10190	17360			
313.3	10220	17920			
315.0	10420	18940			
316.6	10320	18320			
318.2	10130	17360			
319.9	10130	16500			
321.5	10220	16840			
323.2	10260	16670			
324.8	10260	16340			
326.4	10420	16500			
328.1	10420	17920			
329.7	10380	16670			

Table 9, Continued. Boring B-301, Suspension R1-R2 depths and P- and S<sub>H</sub>-wave velocities

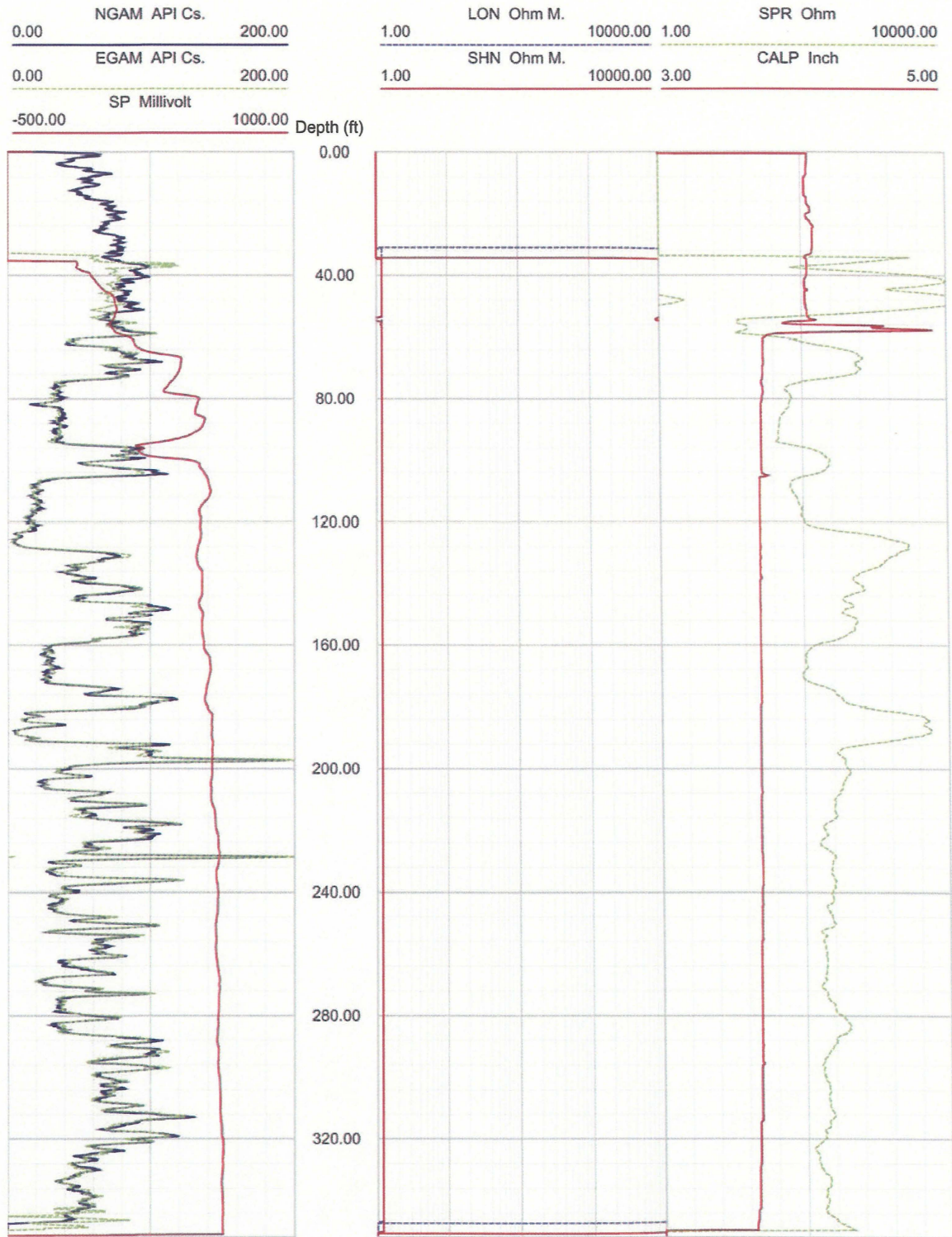


Figure 18. Boring B-301, Caliper, Natural gamma, Resistivity and SP logs

Deviated borehole in orthographic projection, viewed from N45

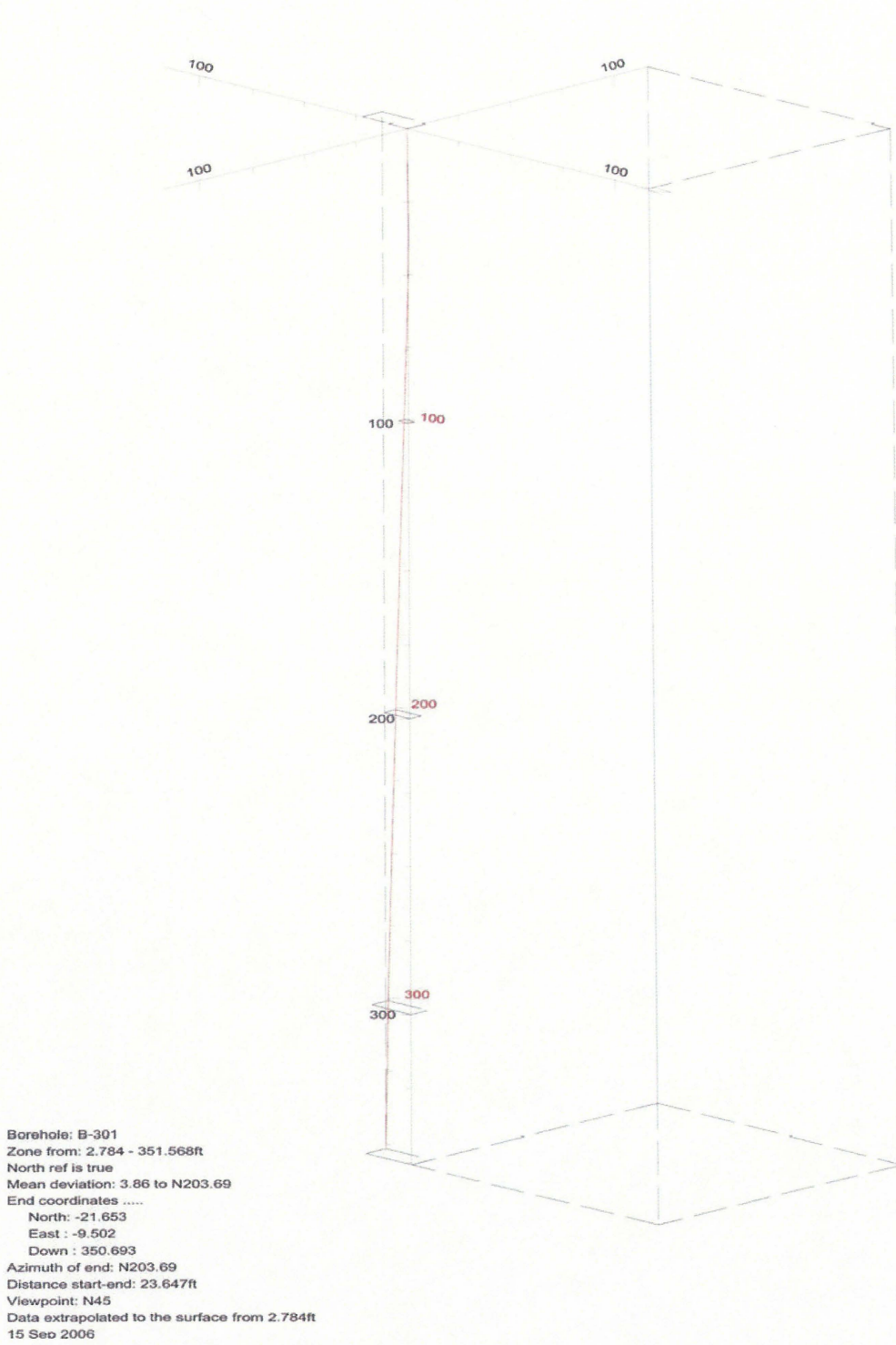


Figure 19. Boring B-301, Deviation Projection (dimensions in feet)



### SCE&G COL Borehole B-306 Receiver to Receiver $V_s$ and $V_p$ Analysis

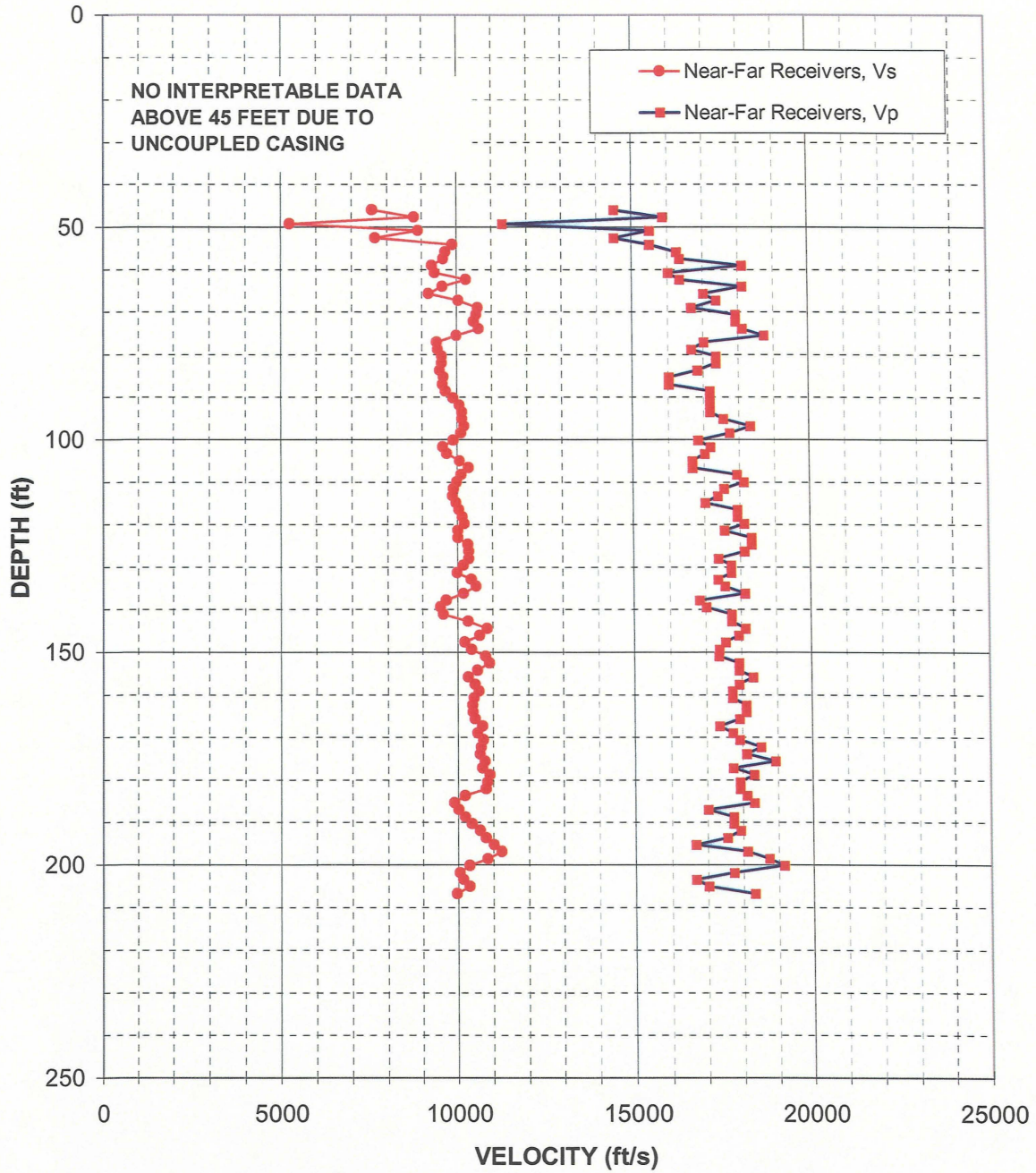


Figure 20: Boring B-306, Suspension R1-R2 P- and  $S_H$ -wave velocities

Depth (feet)	V <sub>s</sub> (feet/sec)	V <sub>p</sub> (feet/sec)	Depth (feet)	V <sub>s</sub> (feet/sec)	V <sub>p</sub> (feet/sec)
45.9	7580	14490	128.0	10320	17360
47.6	8770	15870	129.6	10160	17730
49.2	5250	11300	131.2	9980	17730
50.9	8890	15500	132.9	10380	17360
52.5	7660	14490	134.5	10520	17540
54.1	9880	15500	136.2	10160	18120
55.8	9660	16260	137.8	9660	16840
57.4	9610	16340	139.4	9500	17010
59.1	9290	18120	141.1	9580	17730
60.7	9360	16030	142.7	10290	17730
62.3	10260	16340	144.4	10820	18120
64.0	9580	18120	146.0	10620	17920
65.6	9180	17010	147.6	10190	17540
67.3	10040	17360	149.3	10380	17360
68.9	10580	16670	150.9	10790	17360
70.5	10550	17920	152.6	10890	17920
72.2	10480	17920	154.2	10550	17920
73.8	10620	18120	155.8	10290	18320
75.5	9980	18730	157.5	10480	17920
77.1	9420	17010	159.1	10580	17730
78.7	9440	16670	160.8	10450	17730
80.4	9550	17360	162.4	10420	18120
82.0	9550	17360	164.0	10420	18120
83.7	9500	16840	165.7	10480	17920
85.3	9610	16030	167.3	10680	17360
86.9	9580	16030	169.0	10550	17730
88.6	9660	17180	170.6	10720	17920
90.2	9890	17180	172.2	10650	18520
91.9	10070	17180	173.9	10620	18120
93.5	10130	17180	175.5	10750	18940
95.1	10130	17540	177.2	10680	17730
96.8	10190	18320	178.8	10890	18320
98.4	10100	17730	180.5	10820	17920
100.1	9890	16840	182.1	10790	17920
101.7	9580	17180	183.7	10190	18120
103.4	9690	17010	185.4	9890	18320
105.0	10070	16670	187.0	10010	17010
106.6	10320	16670	188.7	10190	17730
108.3	10100	17920	190.3	10380	17730
109.9	9980	18120	191.9	10620	17920
111.6	9890	17540	193.6	10790	17540
113.2	9860	17360	195.2	11000	16670
114.8	9950	17010	196.9	11220	18120
116.5	10040	17920	198.5	10820	18730
118.1	10130	17920	200.1	10320	19160
119.8	10190	18120	201.8	10040	17730
121.4	10010	17540	203.4	10130	16670
123.0	10010	18320	205.1	10320	17010
124.7	10290	18320	206.7	9950	18320
126.3	10320	18120			

Table10. Boring B-306, Suspension R1-R2 depths and P- and SH-wave velocities

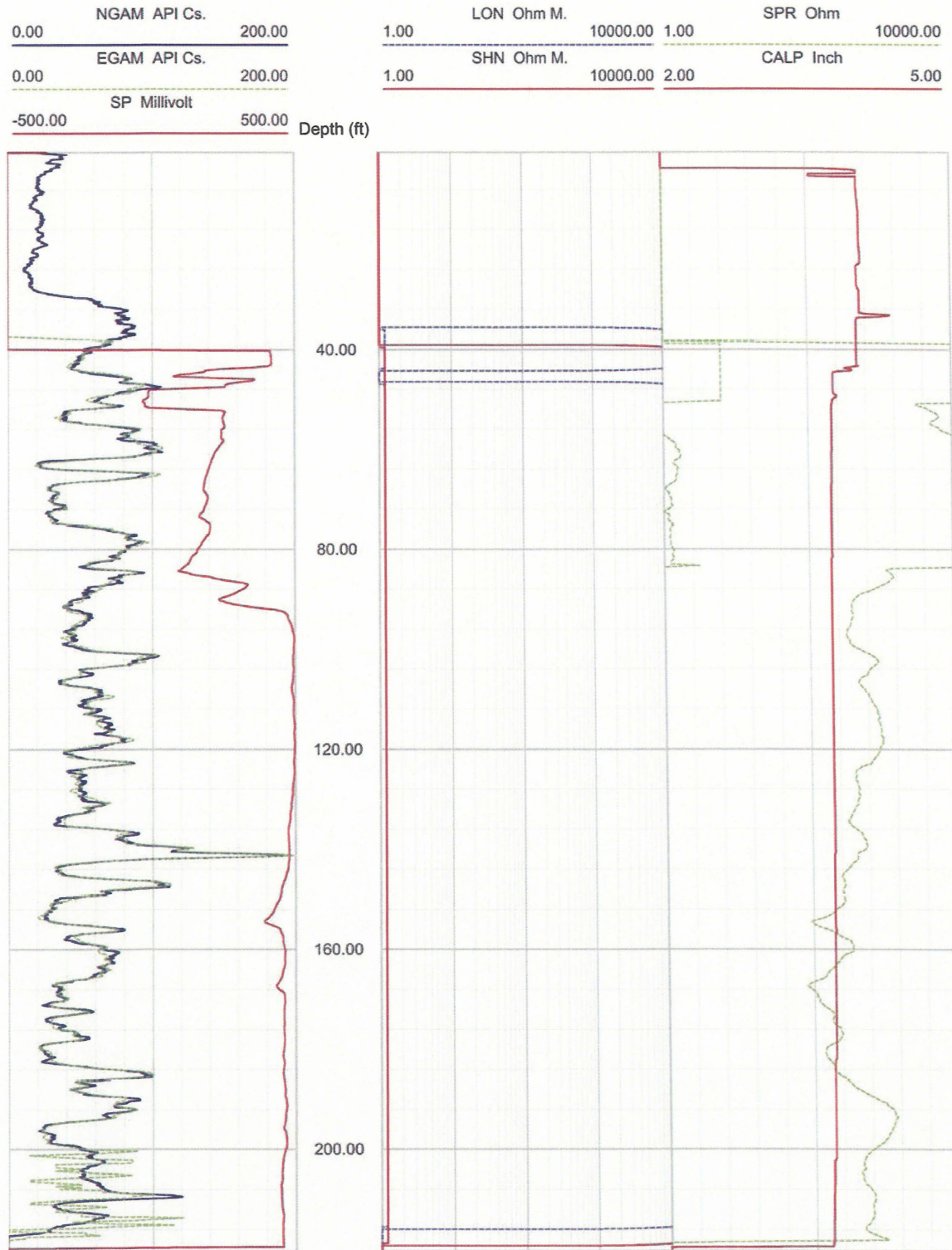


Figure 21. Boring B-306, Caliper, Natural gamma, Resistivity and SP logs

Deviated borehole in orthographic projection, viewed from N45

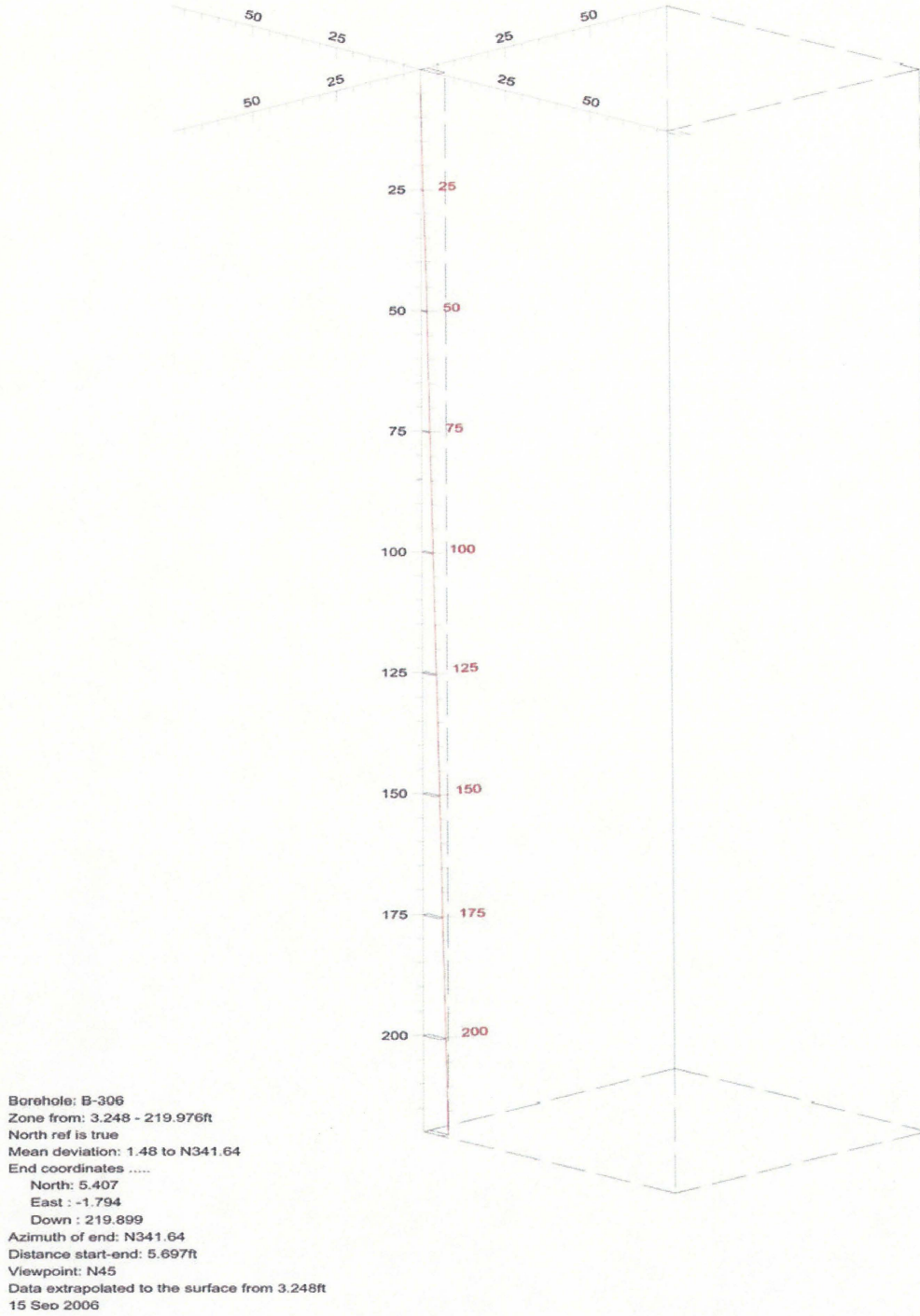


Figure 22. Boring B-306, Deviation Projection (dimensions in feet)

### SCE&G COL Borehole B-307 Receiver to Receiver $V_s$ and $V_p$ Analysis

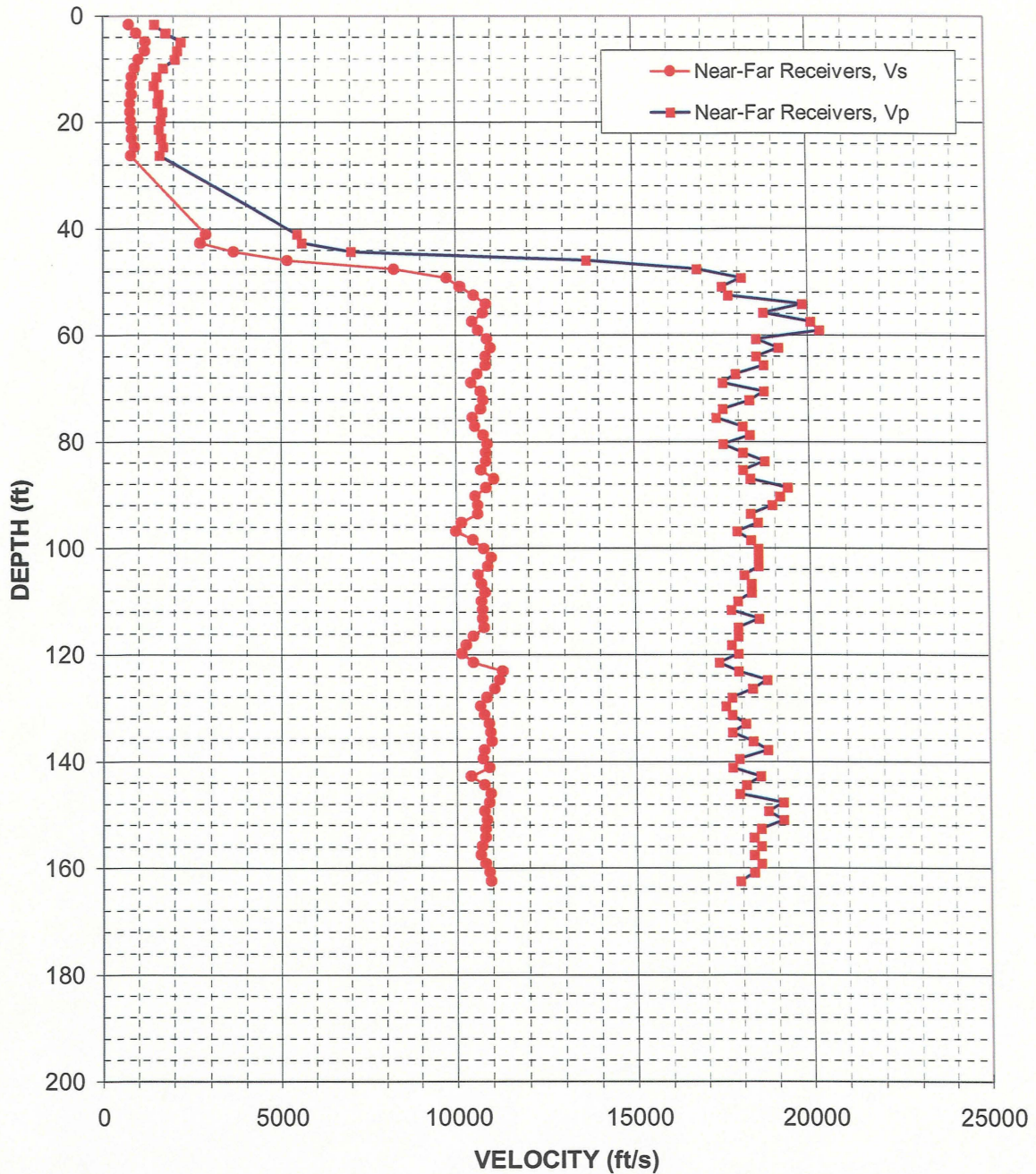


Figure 23: Boring B-307, Suspension R1-R2 P- and  $S_H$ -wave velocities

Depth (feet)	V <sub>s</sub> (feet/sec)	V <sub>p</sub> (feet/sec)	Depth (feet)	V <sub>s</sub> (feet/sec)	V <sub>p</sub> (feet/sec)
1.6	730	1450	96.8	9980	17920
3.3	930	1750	98.4	10450	18320
4.9	1200	2190	100.1	10750	18520
6.6	1180	2100	101.7	10960	18520
8.2	1010	2020	103.4	10860	18520
9.8	890	1690	105.0	10580	18120
11.5	810	1510	106.6	10680	18320
13.1	780	1420	108.3	10790	18320
14.8	810	1570	109.9	10680	17920
16.4	760	1540	111.6	10720	17730
18.0	760	1660	113.2	10720	18520
19.7	790	1620	114.8	10750	17920
21.3	810	1570	116.5	10450	17920
23.0	810	1630	118.1	10260	17730
24.6	890	1690	119.8	10130	17920
26.3	780	1590	121.4	10450	17360
41.0	2880	5460	123.0	11260	17920
42.7	2720	5600	124.7	11190	18730
44.3	3640	7020	126.3	11040	18320
45.9	5190	13660	128.0	10820	17730
47.6	8230	16840	129.6	10650	17540
49.2	9730	18120	131.2	10750	17730
50.9	10100	17540	132.9	10890	18120
52.5	10500	17730	134.5	10930	17730
54.1	10840	19840	136.2	10960	18320
55.8	10750	18730	137.8	10750	18730
57.4	10450	20080	139.4	10720	17920
59.1	10620	20330	141.1	10890	17730
60.7	10860	18520	142.7	10380	18520
62.3	10960	19160	144.4	10750	18120
64.0	10820	18520	146.0	10930	17920
65.6	10820	18730	147.6	10890	19160
67.3	10580	17920	149.3	10750	18730
68.9	10420	17540	150.9	10820	19160
70.5	10680	18730	152.6	10790	18520
72.2	10750	18320	154.2	10790	18320
73.8	10680	17540	155.8	10680	18520
75.5	10450	17360	157.5	10650	18320
77.1	10520	18120	159.1	10790	18520
78.7	10750	18320	160.8	10890	18320
80.4	10860	17540	162.4	10930	17920
82.0	10820	18120			
83.7	10820	18730			
85.3	10680	18120			
86.9	11040	18320			
88.6	10820	19380			
90.2	10520	19160			
91.9	10580	18940			
93.5	10580	18320			
95.1	10130	18520			

Table 11. Boring B-307, Suspension R1-R2 depths and P- and S<sub>H</sub>-wave velocities

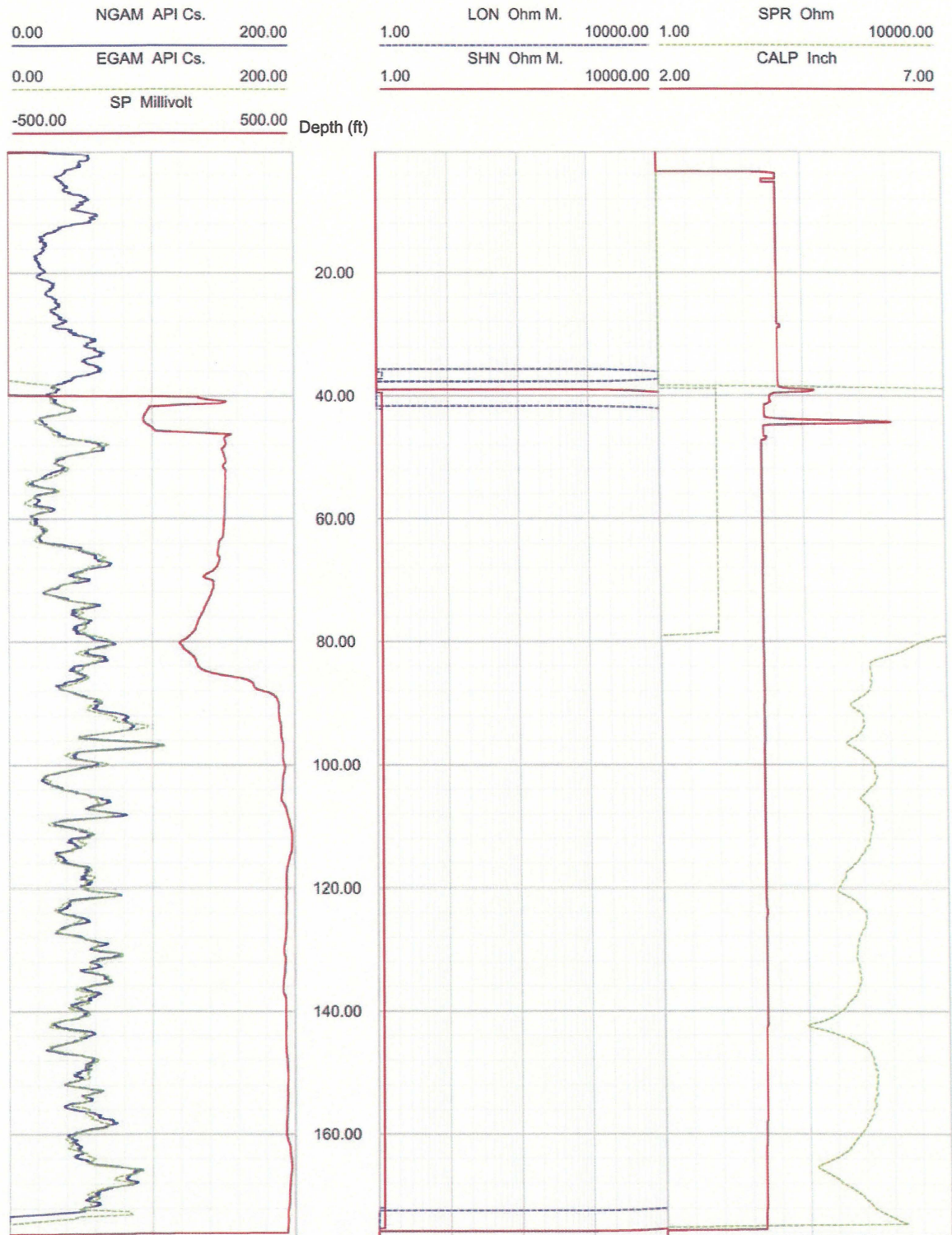


Figure 24. Boring B-307, Caliper, Natural gamma, Resistivity and SP logs

Deviated borehole in orthographic projection, viewed from N45

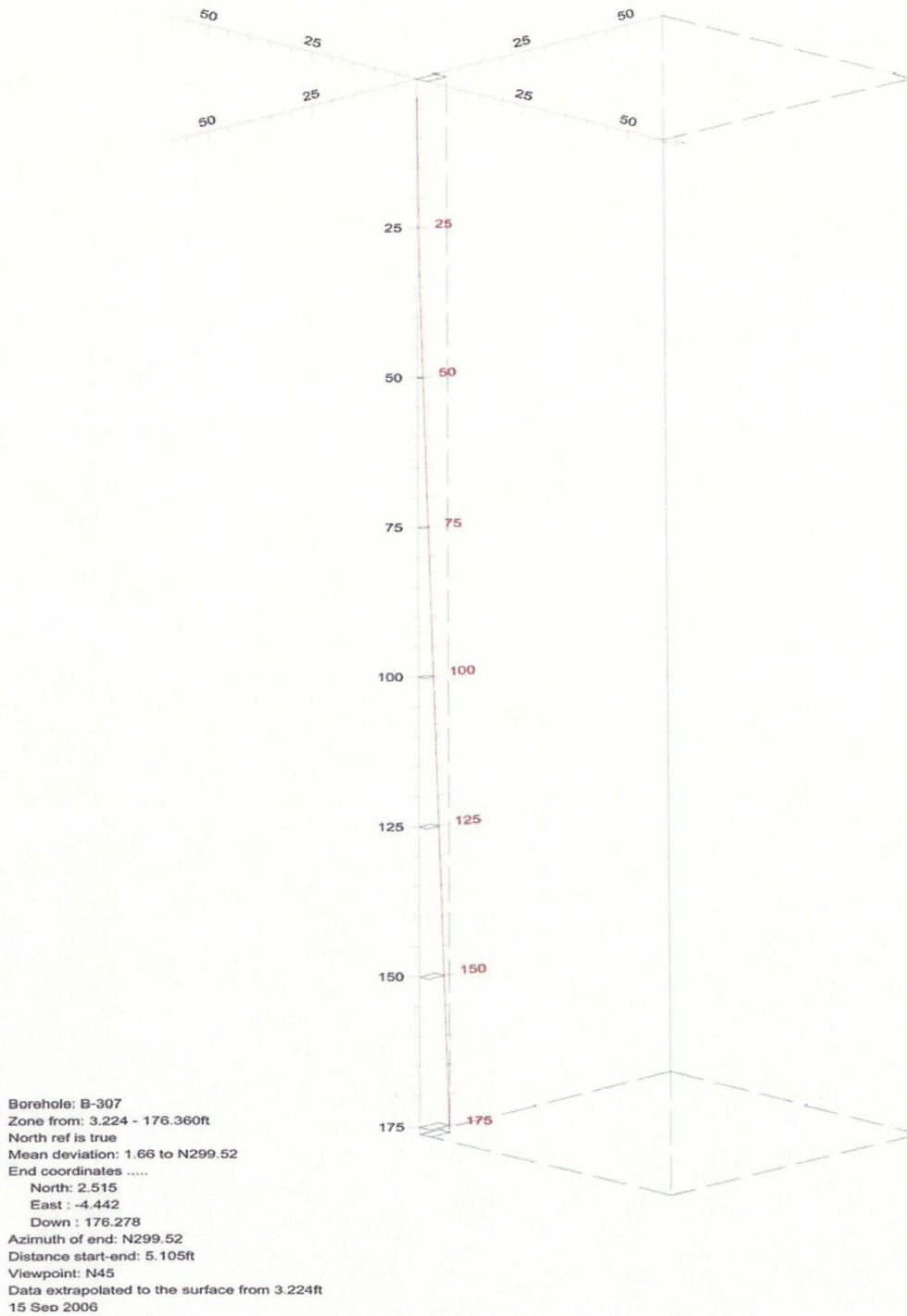


Figure 25. Boring B-307, Deviation Projection (dimensions in feet)



### SCE&G COL Borehole B-311 Receiver to Receiver $V_s$ and $V_p$ Analysis

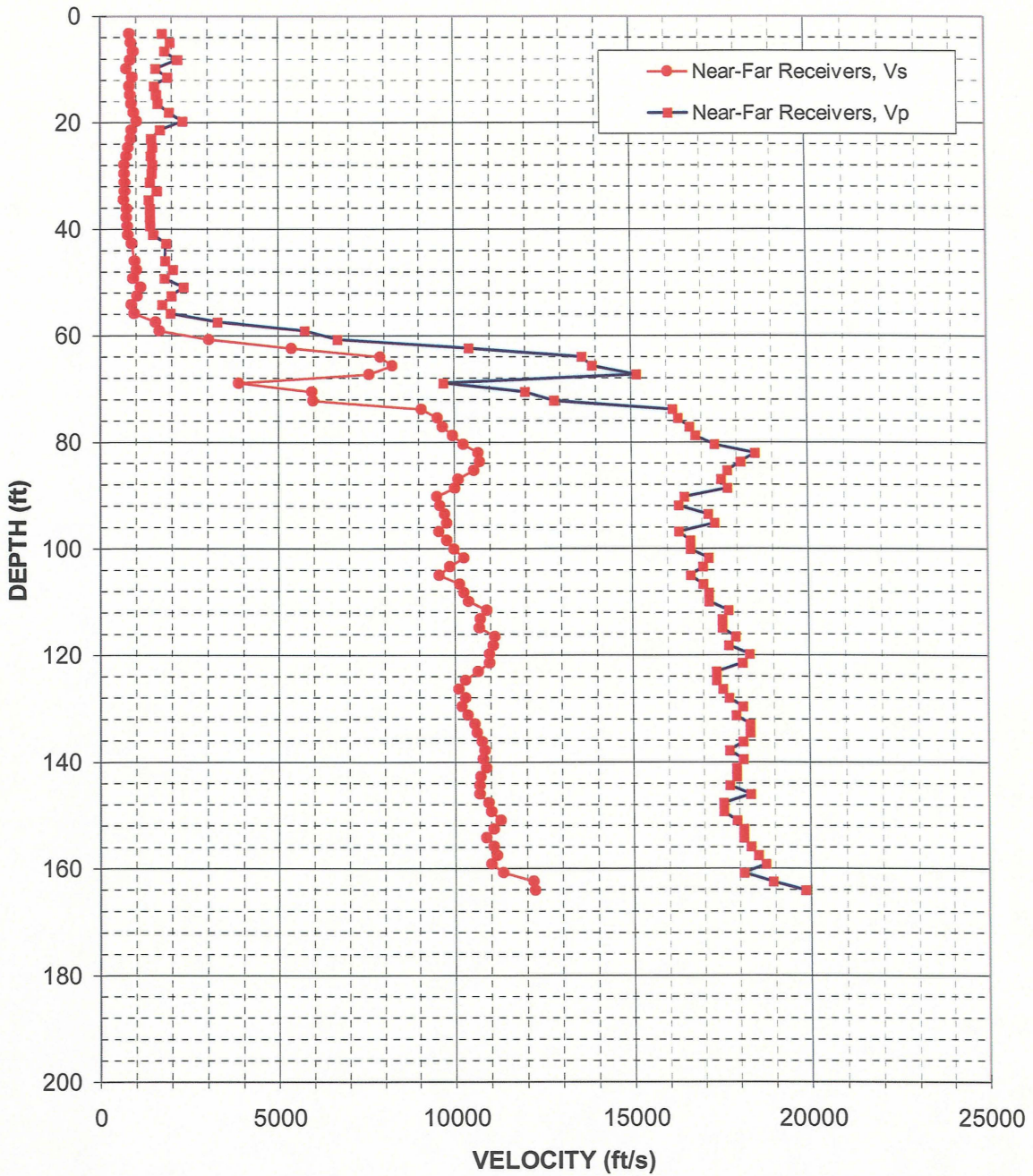


Figure 26: Boring B-311, Suspension R1-R2 P- and  $S_H$ -wave velocities

Depth (feet)	V <sub>s</sub> (feet/sec)	V <sub>p</sub> (feet/sec)	Depth (feet)	V <sub>s</sub> (feet/sec)	V <sub>p</sub> (feet/sec)
3.3	800	1700	86.9	10100	17540
4.9	840	1930	88.6	10010	17730
6.6	910	1770	90.2	9500	16500
8.2	830	2140	91.9	9580	16340
9.8	710	1530	93.5	9720	17180
11.5	880	1850	95.1	9780	17360
13.1	790	1490	96.8	9550	16340
14.8	820	1540	98.4	9780	16670
16.4	850	1590	100.1	9980	16670
18.0	930	1890	101.7	10260	17180
19.7	1010	2280	103.4	9860	17010
21.3	860	1650	105.0	9550	16670
23.0	840	1400	106.6	10130	17010
24.6	770	1440	108.3	10260	17180
26.3	720	1390	109.9	10380	17180
27.9	660	1420	111.6	10890	17730
29.5	660	1410	113.2	10720	17540
31.2	680	1360	114.8	10680	17540
32.8	680	1560	116.5	11110	17920
34.5	650	1330	118.1	11070	17730
36.1	720	1360	119.8	10960	18320
37.7	710	1370	121.4	10960	18120
39.4	740	1380	123.0	10650	17360
41.0	760	1460	124.7	10290	17360
42.7	860	1810	126.3	10100	17540
45.9	950	1790	128.0	10290	17730
47.6	1000	2010	129.6	10190	18120
49.2	900	1770	131.2	10350	17920
50.9	1110	2310	132.9	10550	18320
52.5	1020	1960	134.5	10620	18320
54.1	860	1700	136.2	10750	18120
55.8	940	1940	137.8	10820	17730
57.4	1530	3270	139.4	10790	18120
59.1	1630	5750	141.1	10860	17920
60.7	3030	6670	142.7	10720	17920
62.3	5380	10420	144.4	10680	17730
64.0	7890	13610	146.0	10680	18320
65.6	8230	13890	147.6	10930	17540
67.3	7580	15150	149.3	11000	17540
68.9	3880	9690	150.9	11260	17920
70.5	5950	11990	152.6	11070	18120
72.2	5980	12820	154.2	10860	18120
73.8	9070	16180	155.8	11070	18320
75.5	9520	16340	157.5	11150	18520
77.1	9660	16670	159.1	11000	18730
78.7	9950	16840	160.8	11340	18120
80.4	10260	17360	162.4	12170	18940
82.0	10670	18520	164.0	12210	19840
83.7	10720	18120			
85.3	10550	17730			

Table 12. Boring B-311, Suspension R1-R2 depths and P- and S<sub>H</sub>-wave velocities

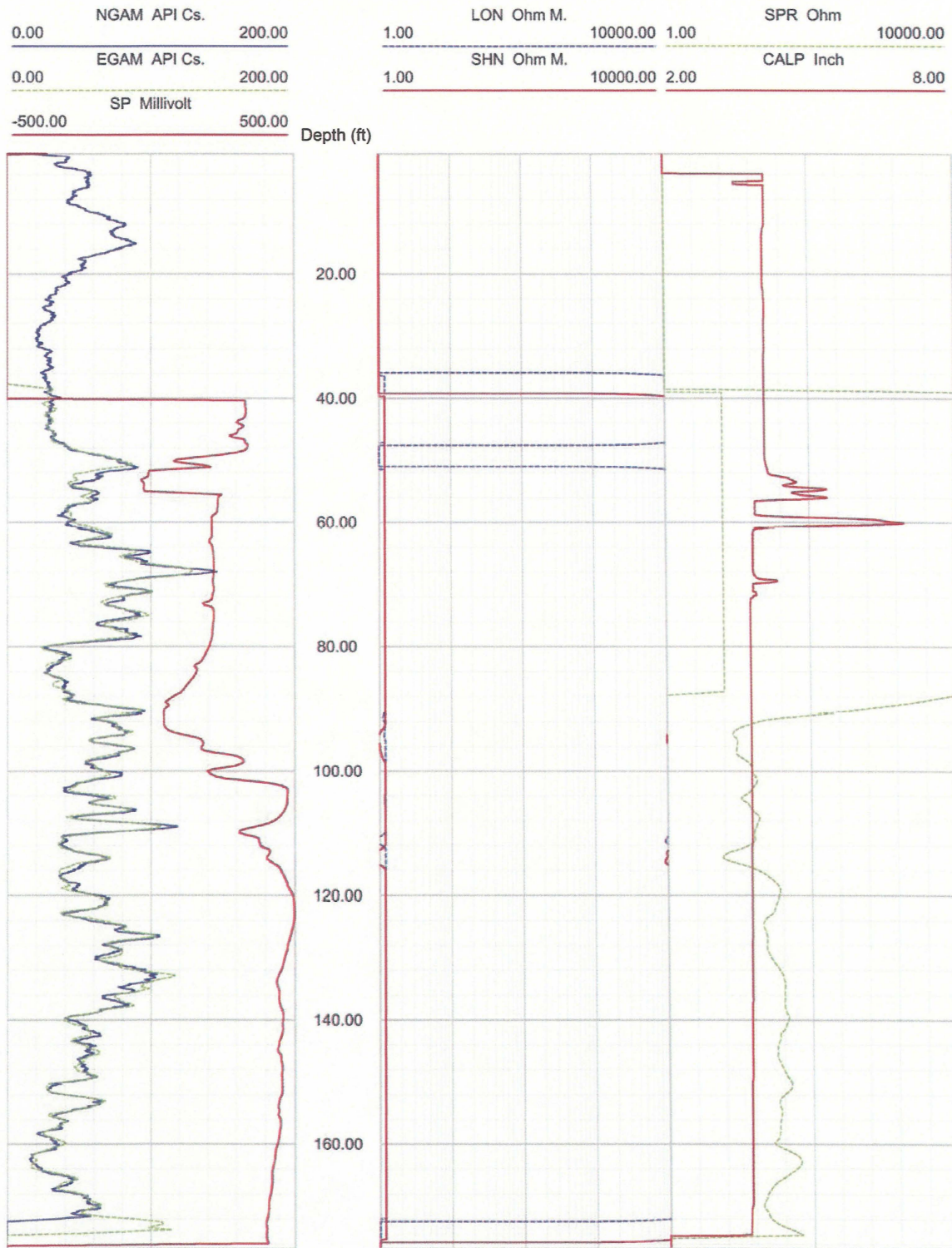
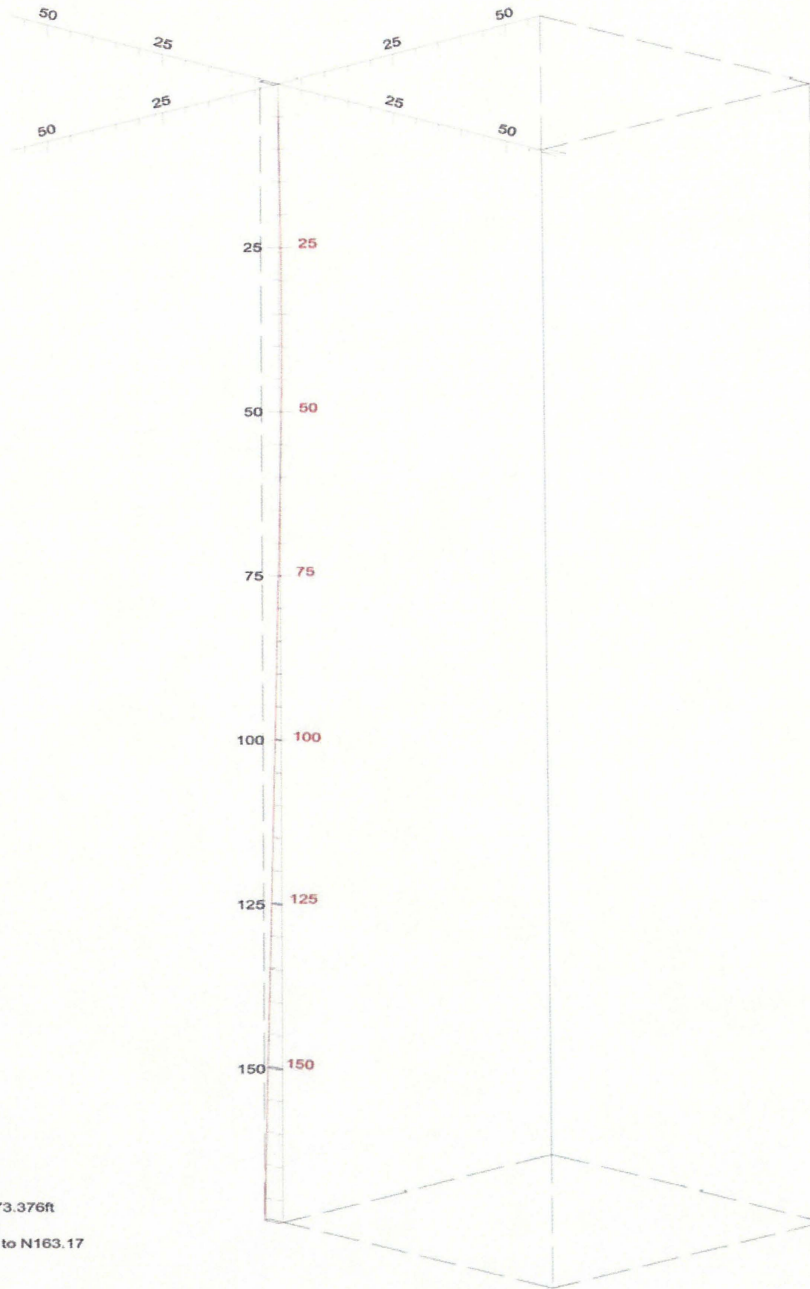


Figure 27. Boring B-311, Caliper, Natural gamma, Resistivity and SP logs

Deviated borehole in orthographic projection, viewed from N45



Borehole: B-311  
Zone from: 3.128 - 173.376ft  
North ref is magnetic  
Mean deviation: 1.04 to N163.17  
End coordinates .....  
North: -3.001  
East : 0.908  
Down : 173.324  
Azimuth of end: N163.17  
Distance start-end: 3.135ft  
Viewpoint: N45  
Data extrapolated to the surface from 3.128ft  
15 Sep 2006

Figure 28. Boring B-311, Deviation Projection (dimensions in feet)

**APPENDIX A**

**SUSPENSION VELOCITY MEASUREMENT  
QUALITY ASSURANCE SUSPENSION SOURCE  
TO RECEIVER ANALYSIS RESULTS**

### SCE&G COL Borehole B-201 Source to Receiver and Receiver to Receiver Analysis

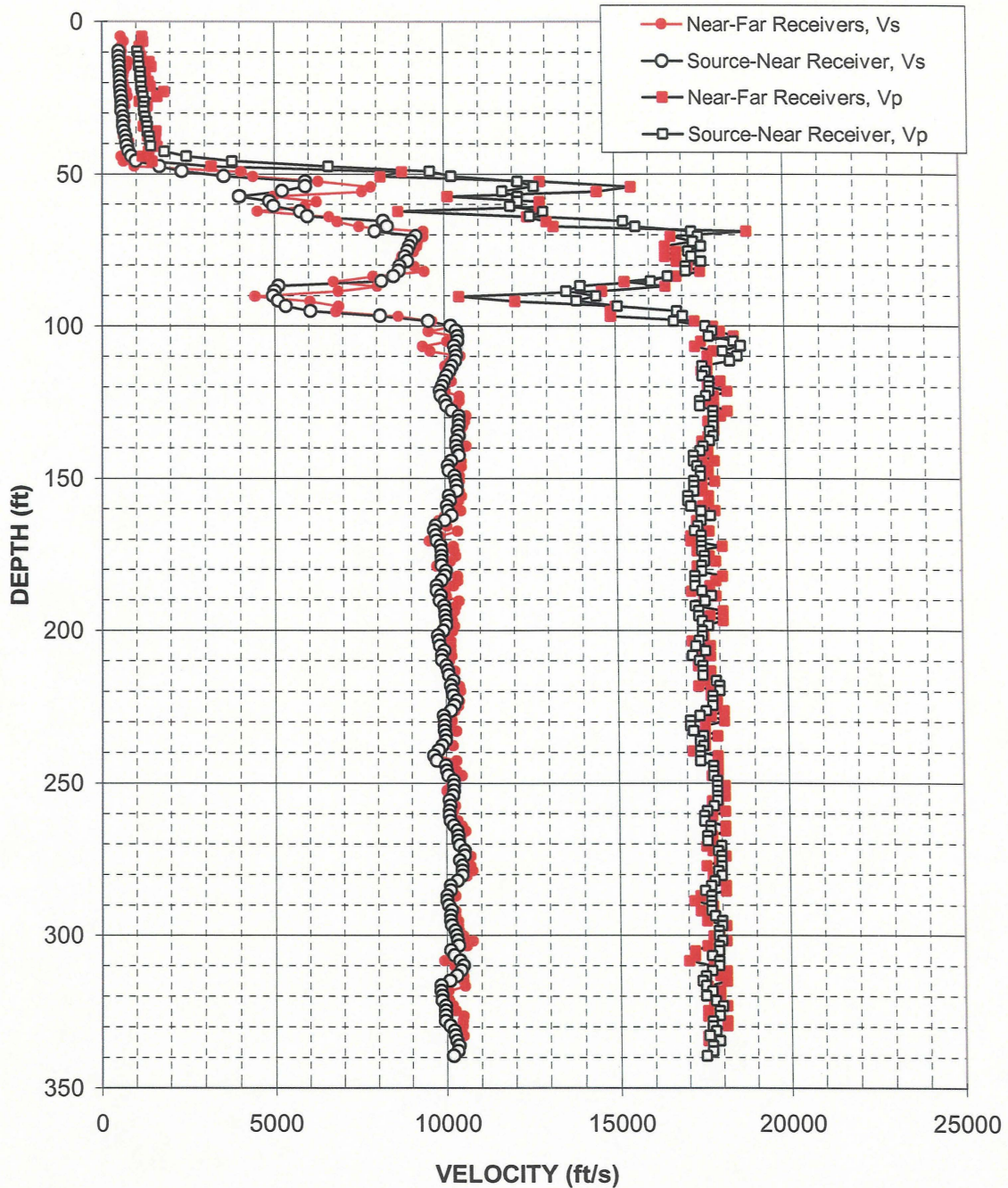


Figure A-1. Boring B-201, R1 - R2 high resolution analysis and S - R1 quality assurance analysis P- and S<sub>H</sub>-wave data

Depth (feet)	V <sub>s</sub> (feet/sec)	V <sub>p</sub> (feet/sec)	Depth (feet)	V <sub>s</sub> (feet/sec)	V <sub>p</sub> (feet/sec)	Depth (feet)	V <sub>s</sub> (feet/sec)	V <sub>p</sub> (feet/sec)
9.8	500	1030	91.8	5100	13880	173.8	9890	17490
11.4	500	1070	93.4	5330	15070	175.4	9890	17580
13.0	510	1070	95.1	6060	16840	177.1	9890	17580
14.7	510	1090	96.7	8120	17020	178.7	9890	17490
16.3	520	1130	98.3	9530	16750	180.4	10020	17490
18.0	530	1120	100.0	10180	17680	182.0	9980	17300
19.6	540	1150	101.6	10340	17880	183.6	9890	17300
21.2	540	1150	103.3	10380	17780	185.3	9740	17300
22.9	550	1170	104.9	10380	18510	186.9	9740	17490
24.5	560	1200	106.5	10280	18730	188.6	9860	17780
26.2	580	1250	108.2	10310	18190	190.2	9830	17580
27.8	570	1220	109.8	10340	18620	191.8	9950	17300
29.4	580	1220	111.5	10310	18400	193.5	9980	17390
31.1	620	1260	113.1	10210	17580	195.1	9980	17390
32.7	620	1300	114.7	10140	17680	196.8	10020	17490
34.4	620	1330	116.4	10050	17580	198.4	10020	17680
36.0	650	1330	118.0	9980	17780	200.0	9920	17490
37.6	690	1390	119.7	9920	17780	201.7	9770	17490
39.3	710	1400	121.3	9860	17780	203.3	9800	17390
40.9	730	1430	122.9	9890	17680	205.0	9830	17300
42.6	770	1820	124.6	10020	17490	206.6	9950	17580
44.2	860	2460	126.2	10050	17490	208.2	9890	17200
45.8	990	3790	127.9	10210	17880	209.9	9890	17390
47.5	1680	6590	129.5	10410	17880	211.5	10020	17490
49.1	2330	9590	131.1	10410	17880	213.2	10050	17490
50.8	3560	10210	132.8	10410	17880	214.8	10080	17490
52.4	5920	12170	134.4	10380	17780	216.4	10210	17880
54.0	5920	12660	136.1	10410	17880	218.1	10140	17980
55.7	5230	11720	137.7	10340	17780	219.7	10180	17980
57.3	4010	12170	139.3	10340	17580	221.4	10210	17780
59.0	4870	12170	141.0	10380	17490	223.0	10310	17780
60.6	4980	11940	142.6	10410	17300	224.7	10240	17780
62.2	5750	12920	144.3	10180	17300	226.3	10140	17580
63.9	5970	12530	145.9	10080	17390	227.9	9920	17390
65.5	8220	15250	147.6	10110	17490	229.6	9950	17110
67.2	8330	15630	149.2	10280	17490	231.2	9950	17110
68.8	7960	17300	150.8	10310	17300	232.9	9950	17200
70.5	9170	17490	152.5	10340	17300	234.5	9980	17490
72.1	9040	17340	154.1	10340	17300	236.1	9980	17390
73.7	8980	17580	155.8	10110	17110	237.8	9890	17490
75.4	8920	17200	157.4	10140	17110	239.4	9770	17390
77.0	8850	17300	159.0	10050	17200	241.1	9650	17390
78.7	8920	17580	160.7	10080	17490	242.7	9710	17390
80.3	8700	17110	162.3	10180	17780	244.3	9980	17780
81.9	8670	17110	164.0	9980	17490	246.0	10020	17780
83.6	8510	16570	165.6	9710	17390	247.6	10050	17780
85.2	8160	16070	167.2	9680	17300	249.3	10210	17880
86.9	5120	14000	168.9	9710	17490	250.9	10210	17880
88.5	5000	13580	170.5	9740	17490	252.5	10210	17880
90.1	4960	14450	172.2	9860	17490	254.2	10180	17880

Table A-1. Boring B-201, S - R1 quality assurance analysis P- and S<sub>H</sub>-wave data

Depth (feet)	V <sub>s</sub> (feet/sec)	V <sub>p</sub> (feet/sec)	Depth (feet)	V <sub>s</sub> (feet/sec)	V <sub>p</sub> (feet/sec)
255.8	10080	17880	337.8	10310	17680
257.5	10110	17780	339.5	10180	17490
259.1	10080	17580			
260.7	10080	17490			
262.4	10110	17490			
264.0	10210	17680			
265.7	10310	17680			
267.3	10340	17580			
268.9	10340	17580			
270.6	10380	17980			
272.2	10510	17880			
273.9	10510	17980			
275.5	10380	17980			
277.1	10450	17980			
278.8	10450	17880			
280.4	10450	17980			
282.1	10310	17780			
283.7	10110	17680			
285.3	10110	17490			
287.0	10020	17680			
288.6	10020	17680			
290.3	10050	17680			
291.9	10140	17680			
293.5	10110	17780			
295.2	10110	17980			
296.8	10140	17980			
298.5	10240	17880			
300.1	10280	17880			
301.8	10310	17980			
303.4	10340	17880			
305.0	10110	17880			
306.7	10210	17680			
308.3	10380	17880			
310.0	10480	17880			
311.6	10410	17680			
313.2	10280	17490			
314.9	10080	17390			
316.5	9830	17490			
318.2	9830	17680			
319.8	9860	17490			
321.4	9860	17780			
323.1	9950	17980			
324.7	9950	17880			
326.4	9950	17880			
328.0	9950	17680			
329.6	10080	17680			
331.3	10210	17780			
332.9	10240	17580			
334.6	10280	17880			
336.2	10340	17680			

Table A-1, continued. Boring B-201, S - R1 quality assurance analysis  
 P- and S<sub>H</sub>-wave data



### SCE&G COL Borehole B-206 Source to Receiver and Receiver to Receiver Analysis

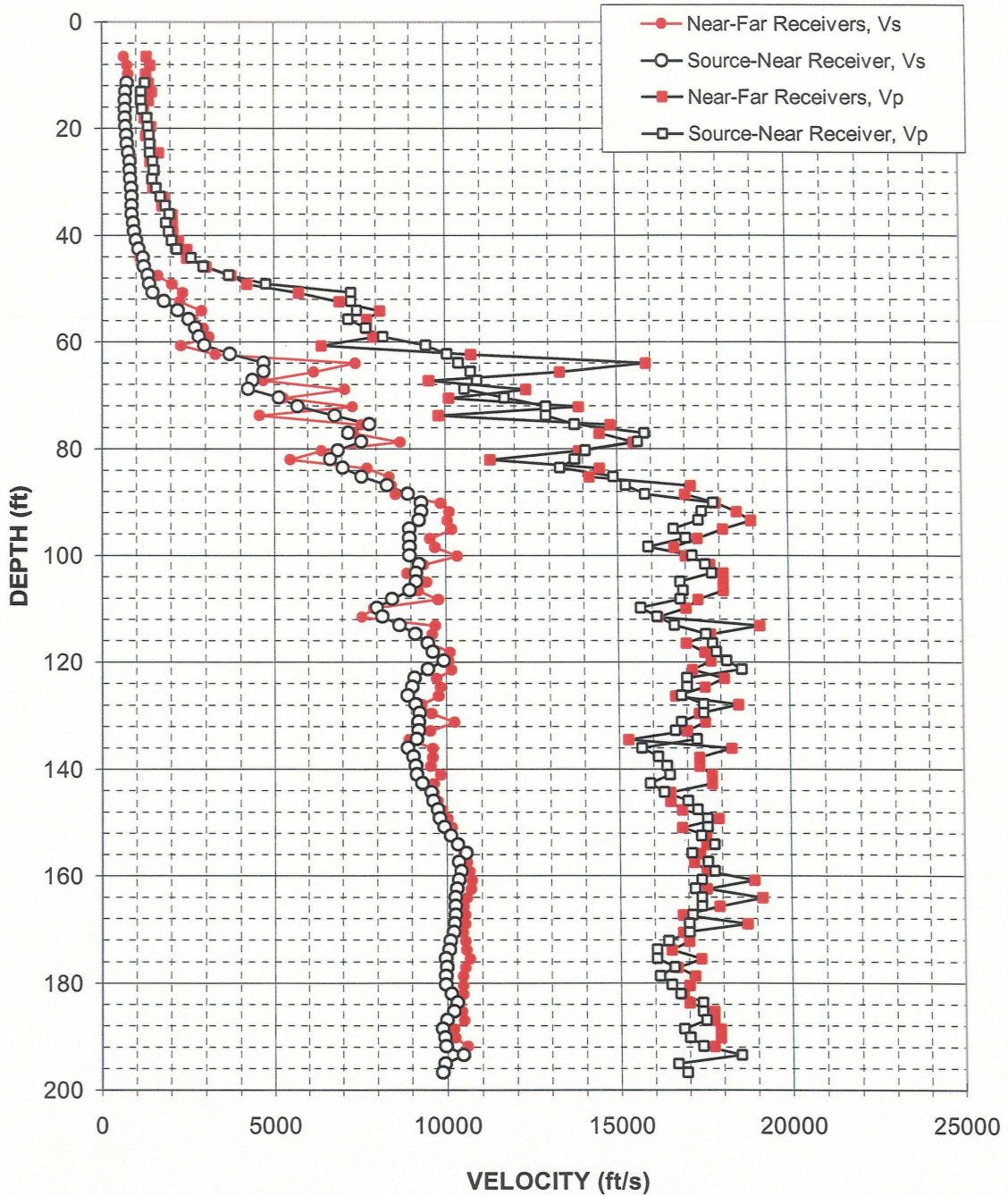


Figure A-2. Boring B-206, R1 - R2 high resolution analysis and S - R1 quality assurance analysis P- and S<sub>H</sub>-wave data

Depth (feet)	V <sub>s</sub> (feet/sec)	V <sub>p</sub> (feet/sec)	Depth (feet)	V <sub>s</sub> (feet/sec)	V <sub>p</sub> (feet/sec)	Depth (feet)	V <sub>s</sub> (feet/sec)	V <sub>p</sub> (feet/sec)
11.4	730	1260	93.4	9230	17390	175.4	9950	16070
13.0	690	1140	95.1	8970	16660	177.1	9980	16570
14.7	680	1150	96.7	8970	17020	178.7	9950	16150
16.3	670	1180	98.3	8970	15900	180.4	9950	16480
18.0	680	1320	100.0	8970	17200	182.0	10110	16750
19.6	690	1350	101.6	9230	17580	183.6	10280	17390
21.2	720	1390	103.3	9150	17780	185.3	10180	17390
22.9	740	1400	104.9	9150	16840	186.9	9980	17490
24.5	780	1400	106.5	8970	16930	188.6	9860	16840
26.2	810	1480	108.2	8460	16840	190.2	9920	17020
27.8	810	1510	109.8	8010	15670	191.8	9950	17390
29.4	830	1470	111.5	8180	16150	193.5	10450	18510
31.1	860	1580	113.1	8670	16660	195.1	9920	16660
32.7	870	1710	114.7	9120	17580	196.8	9860	16930
34.4	870	1850	116.4	9480	17780			
36.0	880	1970	118.0	9620	17880			
37.6	910	1870	119.7	9920	18190			
39.3	940	1950	121.3	9480	18620			
40.9	1010	2040	122.9	9090	17020			
42.6	1070	2180	124.6	9020	17020			
44.2	1200	2580	126.2	8890	16840			
45.8	1220	2940	127.9	9120	17490			
47.5	1350	3680	129.5	9230	17490			
49.1	1390	4760	131.1	9200	16840			
50.8	1480	7280	132.8	9200	16660			
52.4	1810	7280	134.4	9150	17300			
54.0	2210	7450	136.1	8890	15670			
55.7	2520	7190	137.7	9040	16150			
57.3	2720	7720	139.3	9120	16400			
59.0	2810	8220	141.0	9150	16480			
60.6	2970	9450	142.6	9310	15900			
62.2	3700	10050	144.3	9560	16310			
63.9	4690	10380	145.9	9620	17020			
65.5	4690	10730	147.6	9740	17300			
67.2	4370	10910	149.2	9800	17580			
68.8	4250	10550	150.8	9920	17580			
70.5	5150	11720	152.5	10110	17390			
72.1	5700	12920	154.1	10310	17780			
73.7	6810	12920	155.8	10550	17110			
75.4	7810	13760	157.4	10340	17580			
77.0	7190	15830	159.0	10410	17780			
78.7	7580	15630	160.7	10340	17390			
80.3	6880	14070	162.3	10280	17200			
81.9	6660	13760	164.0	10240	17390			
83.6	7030	13330	165.6	10240	17390			
85.2	7580	14890	167.2	10240	17110			
86.9	8330	15250	168.9	10210	17020			
88.5	8920	15830	170.5	10180	17020			
90.1	9310	17830	172.2	10080	16400			
91.8	9310	17490	173.8	10050	16070			

Table A-2. Boring B-206, S - R1 quality assurance analysis  
 P- and S<sub>H</sub>-wave data

### SCE&G COL Borehole B-207 Source to Receiver and Receiver to Receiver Analysis

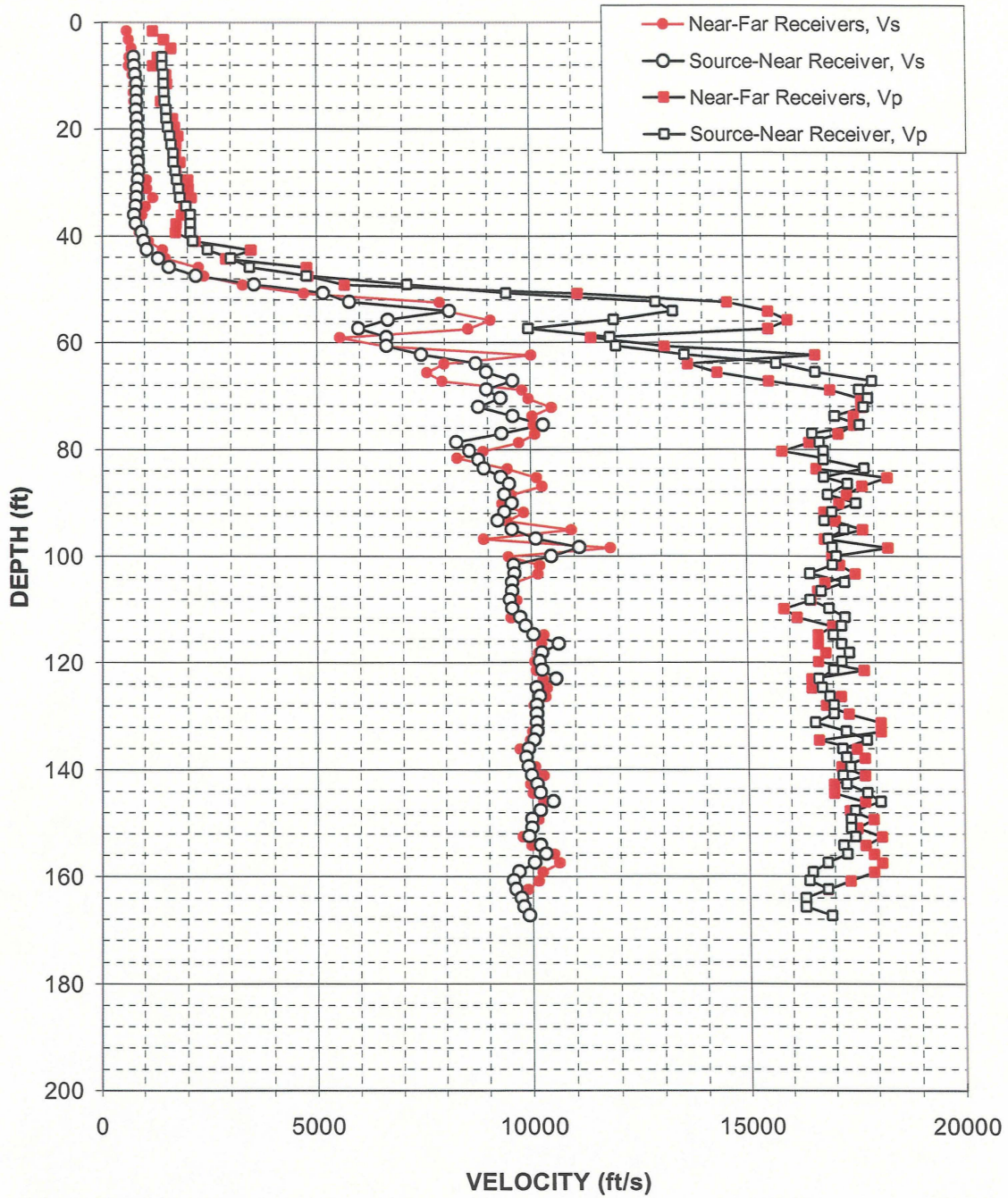


Figure A-3. Boring B-207, R1 - R2 high resolution analysis and S - R1 quality assurance analysis P- and S<sub>H</sub>-wave data

Depth (feet)	V <sub>s</sub> (feet/sec)	V <sub>p</sub> (feet/sec)	Depth (feet)	V <sub>s</sub> (feet/sec)	V <sub>p</sub> (feet/sec)
6.5	740	1410	88.5	9390	16930
8.1	760	1410	90.1	9560	17580
9.8	780	1450	91.8	9390	17020
11.4	810	1450	93.4	9230	16840
13.0	810	1460	95.1	9560	17300
14.7	810	1480	96.7	10110	16930
16.3	810	1500	98.3	11110	17020
18.0	820	1510	100.0	10460	17110
19.6	820	1550	101.6	9590	17020
21.2	840	1590	103.3	9620	16480
22.9	840	1630	104.9	9560	17300
24.5	830	1670	106.5	9560	16750
26.2	840	1670	108.2	9500	16480
27.8	860	1720	109.8	9560	16930
29.4	850	1750	111.5	9740	17300
31.1	830	1790	113.1	9860	17200
32.7	810	1830	114.7	10050	17020
34.4	790	1970	116.4	10620	17200
36.0	750	2080	118.0	10240	17390
37.6	800	2080	119.7	10180	17200
39.3	930	2080	121.3	10240	17020
40.9	980	2130	122.9	10550	16660
42.6	1060	2460	124.6	10110	16750
44.2	1330	3000	126.2	10180	16930
45.8	1570	3440	127.9	10110	17020
47.5	2200	4760	129.5	10110	17020
49.1	3540	7110	131.1	10110	16570
50.8	5150	9450	132.8	10110	17300
52.4	5750	12920	134.4	10050	17780
54.0	8120	13330	136.1	9920	17200
55.7	6660	11940	137.7	9860	17300
57.3	5970	9970	139.3	9920	17390
59.0	6630	11850	141.0	9980	17200
60.6	6630	11990	142.6	10110	17300
62.2	7450	13580	144.3	10180	17780
63.9	8730	15750	145.9	10480	18090
65.5	8980	16660	147.6	10180	17490
67.2	9590	17980	149.2	9980	17390
68.8	8980	17680	150.8	9980	17390
70.5	9310	17880	152.5	9920	17490
72.1	8790	17780	154.1	10180	17200
73.7	9590	17110	155.8	10310	17300
75.4	10290	17680	157.4	10050	16840
77.0	9340	16570	159.0	9680	16480
78.7	8260	16750	160.7	9560	16400
80.3	8580	16840	162.3	9620	16840
81.9	8790	16840	164.0	9740	16310
83.6	8920	17780	165.6	9800	16310
85.2	9310	16840	167.2	9920	16930
86.5	9500	17390			

Table A-3. Boring B-207, S - R1 quality assurance analysis  
 P- and S<sub>H</sub>-wave data

### SCE&G COL Borehole B-211 Source to Receiver and Receiver to Receiver Analysis

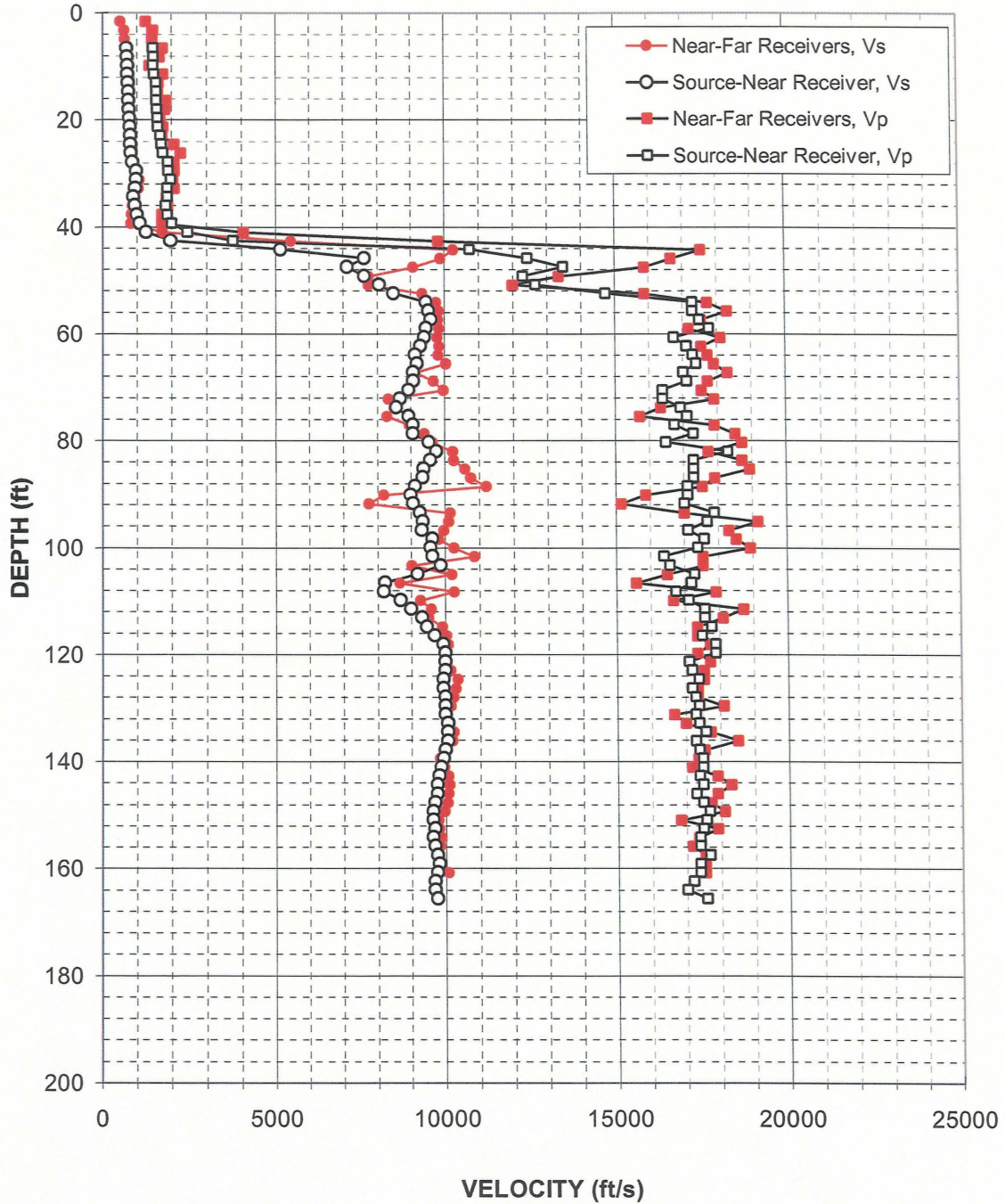


Figure A-4. Boring B-211, R1 - R2 high resolution analysis and S - R1 quality assurance analysis P- and  $S_H$ -wave data

Depth (feet)	V <sub>s</sub> (feet/sec)	V <sub>p</sub> (feet/sec)	Depth (feet)	V <sub>s</sub> (feet/sec)	V <sub>p</sub> (feet/sec)
6.5	700	1460	88.5	9110	17110
8.1	700	1470	90.1	8980	17110
9.8	720	1460	91.8	9040	17020
11.4	720	1490	93.4	9240	17880
13.0	730	1540	95.1	9340	17680
14.7	750	1560	96.7	9310	17110
16.3	750	1550	98.3	9620	17580
18.0	760	1560	100.0	9560	17390
19.6	770	1590	101.6	9620	16400
21.2	790	1600	103.3	9860	16570
22.9	800	1670	104.9	9170	17300
24.5	810	1700	106.5	8220	17200
26.2	810	1740	108.2	8170	16750
27.8	860	1880	109.8	8670	17110
29.4	970	1890	111.5	8980	17580
31.1	970	1970	113.1	9310	17580
32.7	950	1870	114.7	9450	17780
34.4	890	1870	116.4	9680	17490
36.0	930	1820	118.0	9920	17880
37.6	990	1860	119.7	9980	17880
39.3	1080	2000	121.3	9980	17110
40.9	1250	2440	122.9	9980	17200
42.6	1970	3750	124.6	9920	17390
44.2	5150	10730	126.2	9920	17200
45.8	7630	12410	127.9	9980	17300
47.5	7110	13470	129.5	9980	17390
49.1	7630	12290	131.1	9980	17300
50.8	8060	12660	132.8	10050	17390
52.4	8490	14720	134.4	10050	17580
54.0	9450	17300	136.1	10050	17300
55.7	9520	17300	137.7	9980	17390
57.3	9590	17490	139.3	9920	17490
59.0	9450	17780	141.0	9860	17490
60.6	9390	16750	142.6	9800	17390
62.2	9280	17110	144.3	9740	17490
63.9	9120	17300	145.9	9740	17300
65.5	9170	17390	147.6	9680	17490
67.2	9070	17020	149.2	9620	17680
68.8	9070	17110	150.8	9620	17580
70.5	8920	16400	152.5	9680	17490
72.1	8670	16400	154.1	9620	17390
73.7	8550	16930	155.8	9680	17390
75.4	8920	17110	157.4	9740	17680
77.0	9040	16750	159.0	9800	17390
78.7	9040	17300	160.7	9740	17390
80.3	9520	16480	162.3	9680	17200
81.9	9740	18290	164.0	9680	17020
83.6	9560	17300	165.6	9740	17580
85.2	9360	17300			
86.9	9340	17300			

Table A-4. Boring B-211, S - R1 quality assurance analysis P- and S<sub>H</sub>-wave data

### SCE&G COL Borehole B-301 Source to Receiver and Receiver to Receiver Analysis

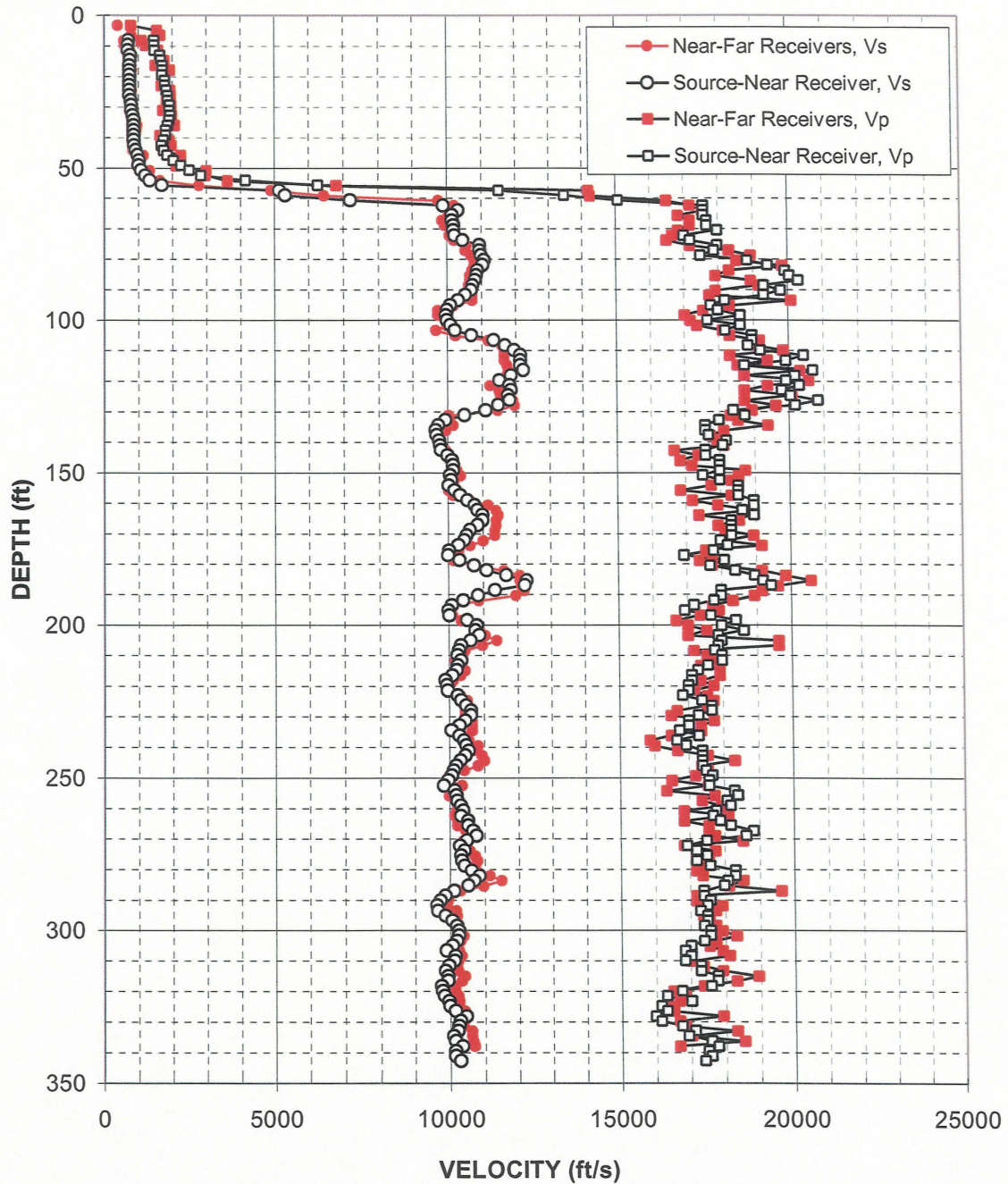


Figure A-5. Boring B-301, R1 - R2 high resolution analysis and S - R1 quality assurance analysis P- and S<sub>H</sub>-wave data

Depth (feet)	V <sub>s</sub> (feet/sec)	V <sub>p</sub> (feet/sec)	Depth (feet)	V <sub>s</sub> (feet/sec)	V <sub>p</sub> (feet/sec)	Depth (feet)	V <sub>s</sub> (feet/sec)	V <sub>p</sub> (feet/sec)
8.1	710	1460	90.1	10690	19780	172.2	10450	17980
9.8	690	1460	91.8	10510	19300	173.8	10280	18190
11.4	700	1470	93.4	10310	18190	175.4	10020	17780
13.0	770	1630	95.1	10080	17780	177.1	9980	16930
14.7	750	1650	96.7	9980	17980	178.7	10310	18090
16.3	730	1700	98.3	9950	18620	180.4	10730	17680
18.0	730	1700	100.0	9980	17680	182.0	11110	18400
19.6	740	1690	101.6	10080	18620	183.6	11680	18950
21.2	740	1770	103.3	10210	18190	185.3	12270	19180
22.9	740	1770	104.9	10690	18950	186.9	12220	19420
24.5	740	1810	106.5	11340	18950	188.6	11340	17980
26.2	740	1850	108.2	11680	18840	190.2	10840	17980
27.8	780	1850	109.8	11940	19180	191.8	10410	17780
29.4	790	1910	111.5	12130	20420	193.5	10080	17200
31.1	800	1900	113.1	12130	19910	195.1	9980	16930
32.7	840	1920	114.7	12130	18730	196.8	10020	17680
34.4	860	1900	116.4	12220	20690	198.4	10510	18400
36.0	860	1850	118.0	11850	20160	200.0	10800	17980
37.6	860	1790	119.7	11510	19910	201.7	10770	18620
39.3	860	1790	121.3	11810	20290	203.3	10880	17880
40.9	860	1720	122.9	11850	19780	205.0	10620	17980
42.6	880	1670	124.6	11770	20030	206.6	10340	17880
44.2	920	1730	126.2	11810	20820	208.2	10280	17780
45.8	970	1830	127.9	11470	20160	209.9	10240	17980
47.5	1020	2020	129.5	11110	18400	211.5	10340	17980
49.1	1010	2230	131.1	10480	18730	213.2	10240	17580
50.8	1080	2480	132.8	9920	17980	214.8	10210	17300
52.4	1200	2830	134.4	9710	17580	216.4	10080	17110
54.0	1330	4140	136.1	9650	17580	218.1	9890	17110
55.7	1690	6270	137.7	9680	17680	219.7	9920	17020
57.3	5150	11510	139.3	9740	18190	221.4	9950	17020
59.0	5320	13470	141.0	9770	18090	223.0	10240	16840
60.6	7190	15070	142.6	9800	17580	224.7	10340	17390
62.2	9890	17580	144.3	9980	17580	226.3	10480	17680
63.9	10310	17580	145.9	10110	17980	227.9	10620	17680
65.5	10140	17580	147.6	10140	17980	229.6	10620	17300
67.2	10140	17680	149.2	10140	17980	231.2	10450	17020
68.8	10180	17680	150.8	10050	17490	232.9	10280	17020
70.5	10180	17980	152.5	10080	17980	234.5	10050	16750
72.1	10210	17020	154.1	10020	18510	236.1	10280	17300
73.7	10450	17200	155.8	10180	18510	237.8	10410	16660
75.4	10950	17980	157.4	10340	18510	239.4	10480	16930
77.0	10950	17880	159.0	10550	18950	241.1	10550	17390
78.7	10990	17490	160.7	10770	18950	242.7	10450	17390
80.3	11070	18840	162.3	10840	18620	244.3	10310	17390
81.9	11030	19420	164.0	10990	18950	246.0	10180	17390
83.6	10880	19910	165.6	10990	18290	247.6	10110	17490
85.2	10840	20030	167.2	10840	18290	249.3	10050	17680
86.9	10800	20290	168.9	10620	18290	250.9	9950	17580
88.5	10730	19300	170.5	10510	18290	252.5	9830	17580

Table A-5. Boring B-301, S - R1 quality assurance analysis P- and S<sub>H</sub>-wave data



Depth (feet)	V <sub>s</sub> (feet/sec)	V <sub>p</sub> (feet/sec)	Depth (feet)	V <sub>s</sub> (feet/sec)	V <sub>p</sub> (feet/sec)
254.2	10140	18290	336.2	10140	17580
255.8	10180	18400	337.8	10340	17780
257.5	10210	18090	339.5	10140	17490
259.1	10310	18190	341.1	10140	17580
260.7	10380	17780	342.8	10280	17390
262.4	10310	17680			
264.0	10510	17880			
265.7	10510	18190			
267.3	10660	18840			
268.9	10770	18620			
270.6	10480	17490			
272.2	10280	16930			
273.9	10410	17200			
275.5	10310	17490			
277.1	10340	17200			
278.8	10410	17580			
280.4	10620	18290			
282.1	10840	18290			
283.7	10690	18090			
285.3	10510	17980			
287.0	10110	17390			
288.6	9860	17390			
290.3	9710	17580			
291.9	9620	17490			
293.5	9650	17300			
295.2	9860	17490			
296.8	10050	17490			
298.5	10180	17390			
300.1	10240	17580			
301.8	10240	17580			
303.4	10180	17390			
305.0	10050	17020			
306.7	9890	16840			
308.3	10140	17020			
310.0	10110	16840			
311.6	9950	17300			
313.2	9860	17300			
314.9	9920	17780			
316.5	9920	17780			
318.2	9740	17580			
319.8	9770	16750			
321.4	9830	16310			
323.1	9950	17020			
324.7	9980	16150			
326.4	10140	16310			
328.0	10450	15980			
329.6	10280	16150			
331.3	10240	16750			
332.9	10210	17110			
334.6	10080	16930			

Table A-5, continued. Boring B-301, S - R1 quality assurance analysis  
 P- and S<sub>H</sub>-wave data

### SCE&G COL Borehole B-306 Source to Receiver and Receiver to Receiver Analysis

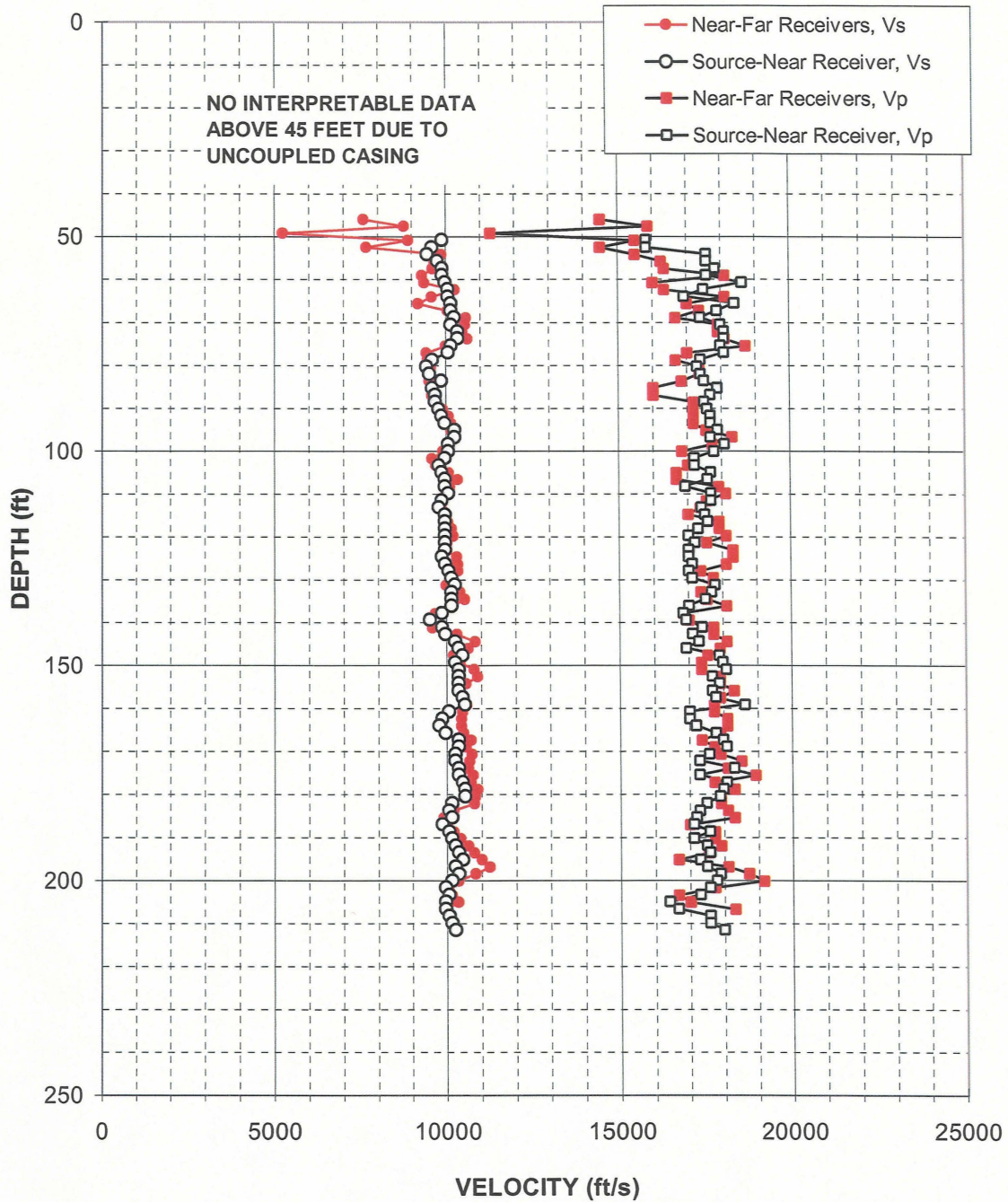


Figure A-6. Boring B-306, R1 - R2 high resolution analysis and S - R1 quality assurance analysis P- and S<sub>H</sub>-wave data

Depth (feet)	V <sub>s</sub> (feet/sec)	V <sub>p</sub> (feet/sec)	Depth (feet)	V <sub>s</sub> (feet/sec)	V <sub>p</sub> (feet/sec)
50.8	9890	15830	132.8	10140	17680
52.4	9590	15830	134.4	10140	17490
54.0	9450	17580	136.1	10140	17020
55.7	9740	17580	137.7	9860	16840
57.3	9890	17830	139.3	9500	16930
59.0	9890	17580	141.0	9860	17390
60.6	9970	18620	142.6	9950	17110
62.2	10050	17490	144.3	10240	17300
63.9	10050	16930	145.9	10340	16930
65.5	10140	18400	147.6	10450	17880
67.2	10140	17880	149.2	10240	17980
68.8	10240	17390	150.8	10340	18090
70.5	10140	17980	152.5	10340	17680
72.1	10340	18090	154.1	10340	17880
73.7	10340	18090	155.8	10340	17680
75.4	10140	17980	157.4	10450	17780
77.0	10050	18090	159.0	10510	18620
78.7	9590	17390	160.7	10050	17020
80.3	9420	17300	162.3	9860	17020
81.9	9500	17390	164.0	9770	17200
83.6	9860	17490	165.6	9950	17780
85.2	9590	17880	167.2	10340	17980
86.9	9680	17680	168.9	10340	18090
88.5	9680	17490	170.5	10240	17580
90.1	9770	17580	172.2	10240	17300
91.8	9860	17680	173.8	10340	18290
93.4	9950	17680	175.4	10340	17300
95.1	10240	17880	177.1	10450	18090
96.7	10240	17680	178.7	10510	17980
98.3	10050	18090	180.4	10510	17880
100.0	10050	17780	182.0	10140	17490
101.6	9950	17200	183.6	10050	17300
103.3	9770	17200	185.3	10140	17200
104.9	9860	17680	186.9	9860	17110
106.5	9950	17580	188.6	10050	17580
108.2	9950	16930	190.2	10140	17110
109.8	10050	17680	191.8	10240	17490
111.5	9860	17680	193.5	10340	17580
113.1	9770	17390	195.1	10450	17300
114.7	9950	17490	196.8	10240	17490
116.4	9950	17580	198.4	10340	17880
118.0	9950	17300	200.0	10140	17780
119.7	9950	17020	201.7	9950	17580
121.3	9950	17200	203.3	10050	17300
122.9	9950	17020	205.0	9950	16400
124.6	9860	17020	206.6	9950	16660
126.2	9950	17110	208.2	10050	17580
127.9	10050	17020	209.9	10140	17580
129.5	10140	17110	211.5	10240	17980
131.1	10240	17780			

Table A-6. Boring B-306, S - R1 quality assurance analysis P- and S<sub>H</sub>-wave data

### SCE&G COL Borehole B-307 Source to Receiver and Receiver to Receiver Analysis

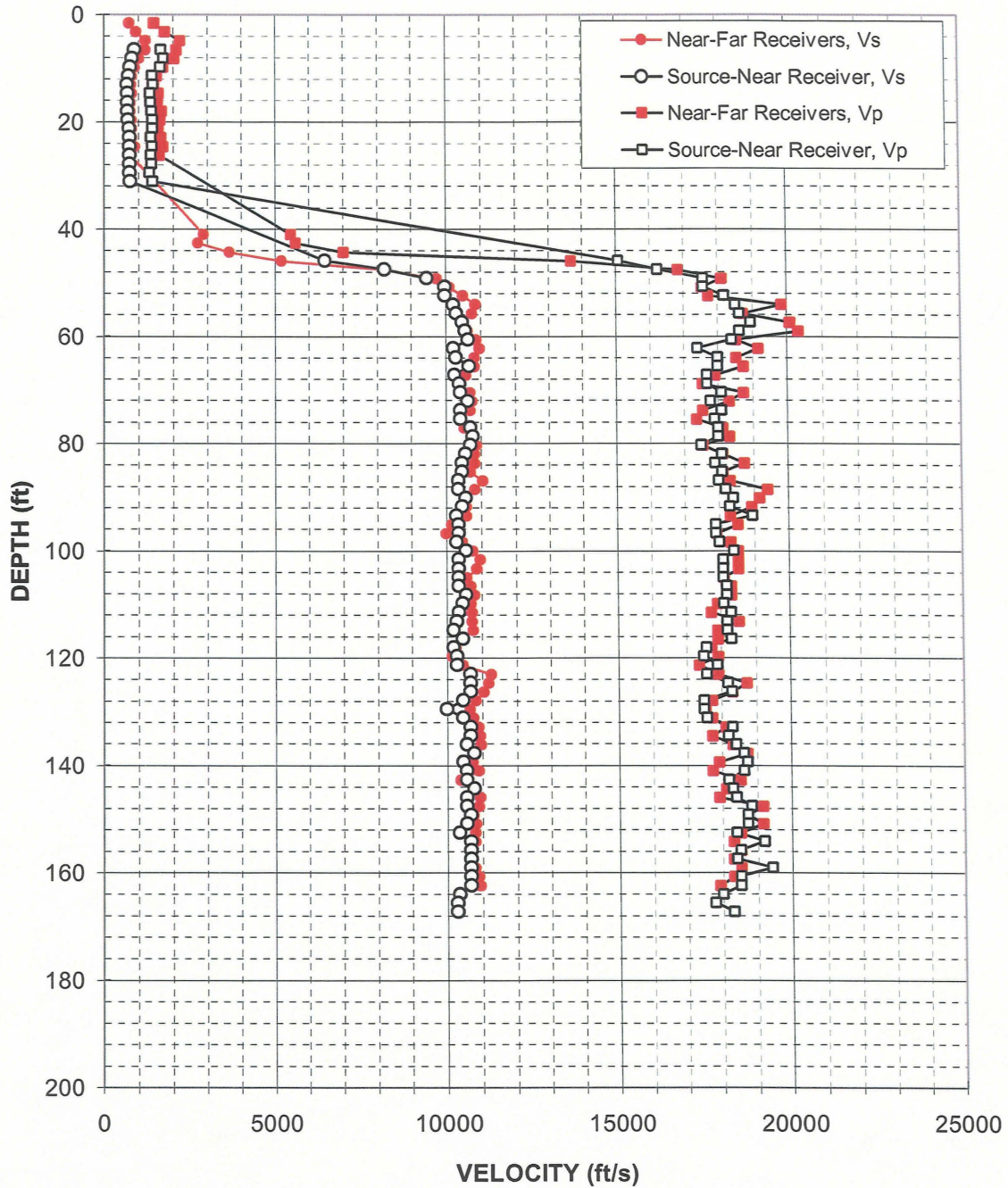


Figure A-7. Boring B-307, R1 - R2 high resolution analysis and S - R1 quality assurance analysis P- and S<sub>H</sub>-wave data

Depth (feet)	V <sub>s</sub> (feet/sec)	V <sub>p</sub> (feet/sec)	Depth (feet)	V <sub>s</sub> (feet/sec)	V <sub>p</sub> (feet/sec)
6.5	880	1630	101.6	10340	18090
8.1	800	1700	103.3	10340	18090
9.8	750	1620	104.9	10340	18090
11.4	700	1370	106.5	10340	18190
13.0	670	1390	108.2	10550	18190
14.7	680	1320	109.8	10450	18090
16.3	680	1330	111.5	10340	18290
18.0	680	1350	113.1	10280	18190
19.6	690	1390	114.7	10180	18190
21.2	720	1380	116.4	10450	18290
22.9	730	1350	118.0	10180	17580
24.5	730	1370	119.7	10280	17490
26.2	730	1350	121.3	10280	17880
27.8	730	1350	122.9	10660	17580
29.4	730	1300	124.6	10660	18190
31.1	750	1380	126.2	10660	18290
45.8	6460	15070	127.9	10450	17490
47.5	8220	16230	129.5	9980	17490
49.1	9450	17580	131.1	10450	17580
50.8	9970	17580	132.8	10660	18290
52.4	9970	18190	134.4	10660	18190
54.0	10210	18510	136.1	10550	18400
55.7	10290	18620	137.7	10770	18620
57.3	10460	18950	139.3	10450	18730
59.0	10550	18620	141.0	10550	18620
60.6	10640	18400	142.6	10550	18190
62.2	10210	17390	144.3	10770	18290
63.9	10280	17980	145.9	10550	18400
65.5	10660	17980	147.6	10550	18840
67.2	10240	17680	149.2	10660	18730
68.8	10380	17680	150.8	10550	18730
70.5	10410	18090	152.5	10340	18400
72.1	10620	17780	154.1	10660	19180
73.7	10410	18090	155.8	10660	18510
75.4	10410	17880	157.4	10660	18400
77.0	10690	17980	159.0	10660	19420
78.7	10770	17980	160.7	10660	18510
80.3	10690	17490	162.3	10660	18510
81.9	10550	18090	164.0	10340	17980
83.6	10450	17880	165.6	10280	17780
85.2	10450	18090	167.2	10280	18290
86.9	10340	17980			
88.5	10340	18190			
90.1	10550	18400			
91.8	10450	18290			
93.4	10280	18950			
95.1	10340	17880			
96.7	10340	17880			
98.3	10280	17980			
100.0	10550	18400			

Table A-7. Boring B-307, S - R1 quality assurance analysis P- and S<sub>H</sub>-wave data

### SCE&G COL Borehole B-311 Source to Receiver and Receiver to Receiver Analysis

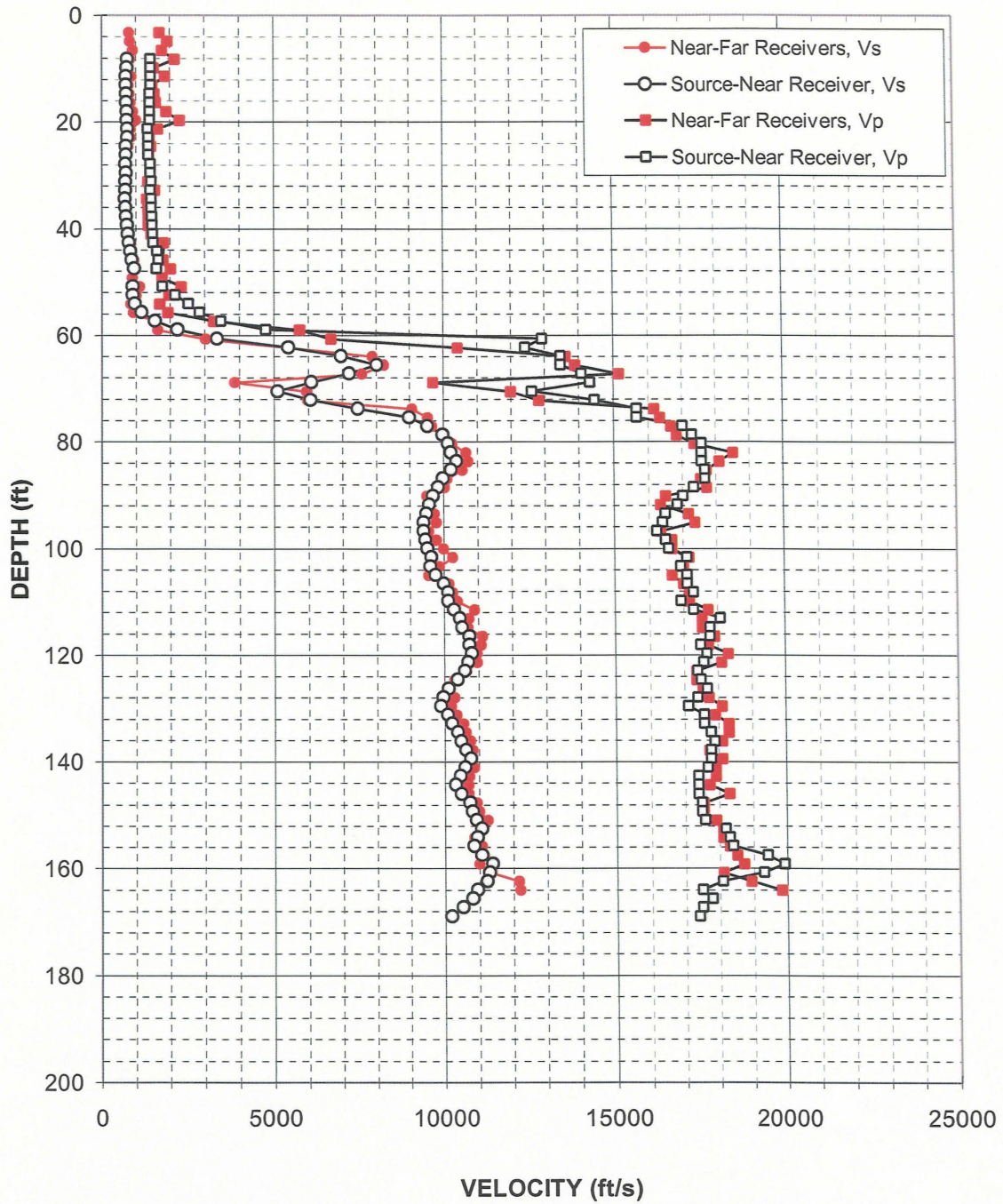


Figure A-8. Boring B-311, R1 - R2 high resolution analysis and S - R1 quality assurance analysis P- and S<sub>H</sub>-wave data


Depth (feet)	V <sub>s</sub> (feet/sec)	V <sub>p</sub> (feet/sec)	Depth (feet)	V <sub>s</sub> (feet/sec)	V <sub>p</sub> (feet/sec)
8.1	750	1420	91.8	9560	16840
9.8	740	1420	93.4	9480	16480
11.4	710	1420	95.1	9390	16400
13.0	710	1420	96.7	9390	16230
14.7	720	1390	98.3	9450	16480
16.3	720	1390	100.0	9500	16570
18.0	730	1400	101.6	9620	17110
19.6	730	1390	103.3	9590	16930
21.2	750	1350	104.9	9740	17110
22.9	750	1360	106.5	9980	17110
24.5	710	1360	108.2	10110	17300
26.2	710	1360	109.8	10110	16930
27.8	690	1410	111.5	10280	17300
29.4	700	1420	113.1	10450	18090
31.1	690	1440	114.7	10510	17780
32.7	690	1420	116.4	10730	17780
34.4	690	1440	118.0	10730	17490
36.0	690	1440	119.7	10800	17680
37.6	710	1460	121.3	10690	17580
39.3	740	1480	122.9	10590	17390
40.9	760	1480	124.6	10380	17490
42.6	800	1500	126.2	10110	17680
44.2	840	1610	127.9	9950	17390
45.8	870	1650	129.5	9890	17110
47.5	950	1600	131.1	10080	17580
50.8	900	1770	132.8	10210	17580
52.4	900	2130	134.4	10380	17780
54.0	960	2520	136.1	10480	17880
55.7	1170	2840	137.7	10620	17780
57.3	1560	3460	139.3	10770	17780
59.0	2210	4760	141.0	10590	17680
60.6	3350	12920	142.6	10450	17390
62.2	5410	12410	144.3	10310	17390
63.9	6960	13470	145.9	10480	17390
65.5	8010	13470	147.6	10730	17490
67.2	7190	14070	149.2	10800	17490
68.8	6090	14320	150.8	10910	17580
70.5	5100	12610	152.5	11070	18190
72.1	6060	14450	154.1	10950	18290
73.7	7450	15670	155.8	10840	18400
75.4	8980	15670	157.4	11070	19420
77.0	9520	17020	159.0	11380	19910
78.7	9970	17300	160.7	11300	19300
80.3	10130	17580	162.3	11220	18090
81.9	10210	17580	164.0	10950	17490
83.6	10380	17580	165.6	10800	17780
85.2	10210	17680	167.2	10510	17490
86.9	9970	17680	168.9	10180	17390
88.5	9830	17340			
90.1	9680	17020			

Table A-8. Boring B-311, S - R1 quality assurance analysis P- and S<sub>H</sub>-wave data

**APPENDIX B**

**CALIPER, NATURAL GAMMA, RESISTIVITY,  
AND SPONTANEOUS POTENTIAL LOGS**



 <b>ROBERTSON GEOLOGGING LIMITED</b>		SCE&G COL					
		B201CALUP02					
COMPANY GEOVision WELL B-201 FIELD COUNTRY STATE COUNTY LAT.: LONG.:			OTHER SERVICES				
Perm. Da. Elev Log. Datum Drill Datum		KB 0.00 DF 0.00 GL 0.00					
DATE 22 Jun 06 RUN# 6 TYPE OF LOG CALIPER DEPTH DRILLER 350.00 DEPTH LOGGER 350.00 LOG DEEPEST 348.00 LOG SHALLOW 0.00 FLUID IN HOLE WATER SALINITY DENSITY LEVEL MAX TEMP °C 0.00 RIG TIME RECORDED BY R. STELLER WITNESSED BY		21 Oct 05 0		21 Oct 05 0			
RUN#	BIT RECORD			CASING RECORD			
	SIZE	FROM	TO	SIZE	WEIGHT	FROM	TO
6	4.25	0.00	200.00	0.00	0.00	0.00	0.00
0	0.00	0.00	0.00	0.00	0.00	0.00	0.00
0	0.00	0.00	0.00	0.00	0.00	0.00	0.00

ROBERTSON GEOLOGGING TECHNOLOGY	
REMARKS ( C:\Data\PS\SCE&G\B-201 22-23 June 2006 boring ge..	

0.00	NGAM API Cs.	200.00	1.00	LON Ohm M.	10000.00	1.00	SPR Ohm	10000.00
0.00	EGAM API Cs.	200.00	1.00	SHN Ohm M.	10000.00	3.00	CALP Inch	5.00
-500.00	SP Millivolt	500.00						

