



Umetco Minerals Corporation

2754 COMPASS DRIVE, SUITE 280
GRAND JUNCTION, COLORADO 81506
970.245.3700

September 30, 2011

Mr. Dominic Orlando, Senior Project Manager
Decommissioning and Uranium Licensing Directorate
Division of Waste Management and Environmental Protection
Office of Federal and State Materials and Environmental Management Programs
U.S. Nuclear Regulatory Commission
Mail Stop T-8F5
11545 Rockville Pike
Rockville, Maryland 20852

**Subject: Nuclear Regulatory Commission Annual Report
Umetco Minerals Corporation Gas Hills, Wyoming Site
For the report period July 2010 through June 2011**

Reference: License SUA-648, Docket No. 40-0299

Dear Mr. Orlando,

Umetco Minerals Corporation hereby submits two copies of the Gas Hills, Wyoming Annual Report prepared in accordance with License SUA-648. This document is submitted in accordance with License Conditions 10B, 16, 32, 35, and 39 for the above report period.

If you, or your staff, have any questions, please call me at (970) 256-8889.

Sincerely,

Thomas E. Gieck
Reclamation Leader

Enclosures

cc: NRC Region IV (Arlington, TX)
Wyoming Department of Environmental Quality (Lander)
Bureau of Land Management (Casper Field Office)
Bureau of Land Management (Lander Field Office)

FSME21

U. S. Nuclear Regulatory Commission

Annual Report
for
Gas Hills, Wyoming

July 2010 through June 2011

License SUA-643
Docket Number 40-0299

Umetco Minerals Corporation
2754 Compass Drive, Suite 280
Grand Junction, Colorado 81506

September 2011

CONTENTS

1.0	INTRODUCTION	1
2.0	ORGANIZATIONAL CHART	2
3.0	ALARA AUDIT	4
4.0	ANNUAL LAND USE SURVEY	5
4.1	Private Residences	5
4.2	Grazing.....	5
4.3	Private and Public Potable Water and Agricultural Wells.....	5
4.4	Other Operations.....	5
5.0	GROUNDWATER MONITORING REVIEW	7
5.1	Annual Sampling	7
5.2	Semi-Annual Sampling.....	8
6.0	REFERENCES	11

TABLES

Table 2.1	2011 Organizational Chart.....	3
Table 5.1	Annual Sampling Results for the Western Flow Regime.....	7
Table 5.2	Annual Sampling Results for the Southwestern Flow Regime.....	7
Table 5.3	Semi-Annual Sampling Results for the Western Flow Regime.....	9
Table 5.4	Semi-Annual Sampling Results for the Southwestern Flow Regime.....	10
Table 5.5	Comparison of June 2011 Chloride and Sulfate Concentrations in the Model Validation Wells versus Actual Concentrations.....	10

FIGURES

Figure 1	Groundwater Monitor Wells
Figures 2 - 9	Concentration Trends in Western Flow Regime POC Wells
Figures 10 - 17	Concentration Trends in Southwestern Flow Regime POC Wells
Figure 18	Water Level Elevation Map, June 2011, East Gas Hills Monitor Wells
Figure 19	Phreatic Elevations in Western Flow Regime POC Wells
Figure 20	Phreatic Elevations in Western Flow Regime Monitoring Wells
Figure 21	Phreatic Elevations in Southwestern Flow Regime POC Wells
Figure 22	Phreatic Elevations in Southwestern Flow Regime Monitoring Wells
Figures 23 - 24	Chloride and Sulfate Trends in the Western Flow Regime POC Wells
Figures 25 - 26	Chloride and Sulfate Trends in the Southwestern Flow Regime POC Wells
Figures 27 - 28	Chloride and Sulfate Trends in the Western Flow Regime Monitoring Wells
Figures 29 - 30	Natural Uranium Trends in the Western Flow Regime Monitoring Wells
Figures 31 - 32	Chloride and Sulfate Trends in the Southwestern Flow Regime Monitoring Wells
Figure 33	Natural Uranium Trends in the Southwestern Flow Regime Monitoring Wells
Figures 34 - 37	Simulated Chloride Trends at the Model Validation Wells versus Actual Data
Figures 38 - 41	Simulated Sulfate Trends at the Model Validation Wells versus Actual Data

APPENDICES

Appendix A	Water Rights Within Five-Mile Radius of East Gas Hills Site
------------	---

1.0 INTRODUCTION

This document is submitted in accordance with U.S. Nuclear Regulatory Commission (NRC) License No. SUA-648 Amendment Number 65, Conditions 10B, 16, 32, 35, and 39, Docket Number 40-0299, for the former uranium mill site at Gas Hills, Wyoming. The report includes the Umetco Minerals Corporation (Umetco) organizational structure, environmental monitoring report, land use survey and groundwater monitoring review for the period between July 1, 2010 and June 30, 2011. A copy of this annual report is retained at the Umetco office in Grand Junction, Colorado, and is available for NRC review.

2.0 ORGANIZATIONAL CHART

In accordance with License Condition 10B, the authority and responsibilities of each management level for Umetco are presented in Table 2.1 and are described below. Because reclamation of the site has been completed, Umetco has no on-site employees.

Umetco is a wholly owned subsidiary of Union Carbide Corporation which is a wholly owned subsidiary of The Dow Chemical Company (Dow).

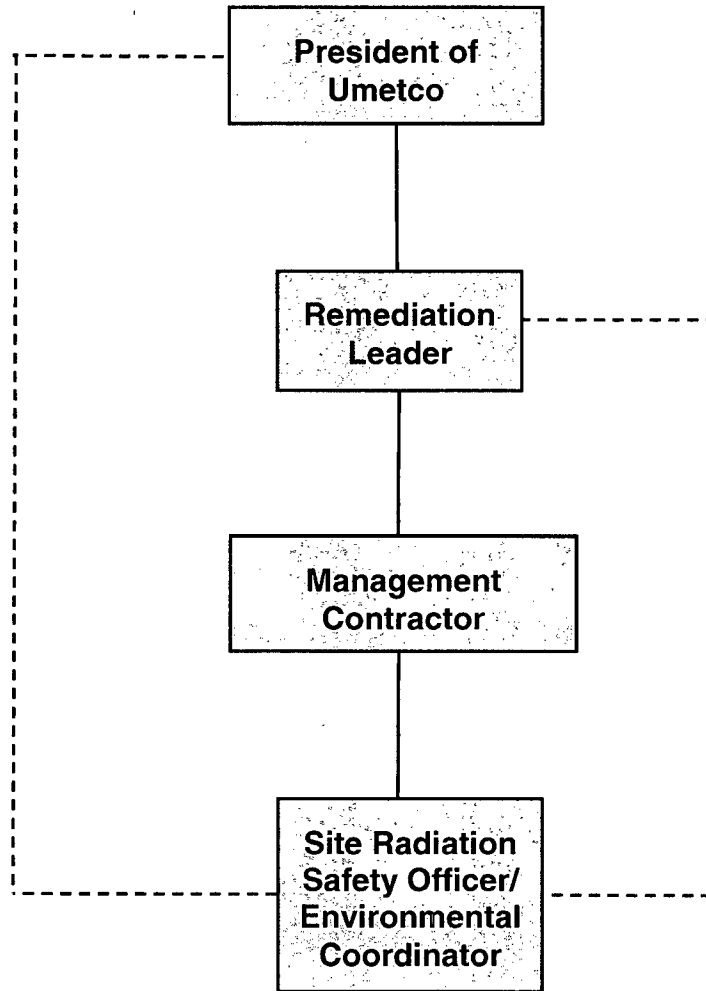
The President of Umetco is responsible for all practices and decisions made by the personnel reporting to him and reports to the Vice President of Environmental, Health and Safety at Dow.

The Remediation Leader reports to the President of Umetco and provides site management.

Umetco has retained the services of a management contractor who is responsible for compliance with the operational, health, radiation, safety and environmental practices and standards and conducts site maintenance and environmental monitoring. The management contractor is responsible for the day-to-day operating decisions at the site. The contractor reports to the Remediation Leader.

The Radiation Safety Officer/Environmental Coordinator is responsible for conducting activities that ensure the site radiation safety program meets applicable standards. This involves monitoring, evaluating personnel exposure and area surveys, overseeing the radiation protection program, providing appropriate training, maintaining monitoring equipment, and reporting. The Radiation Safety Officer/Environmental Coordinator develops and coordinates procedure modifications for radiological protection and As Low As Reasonably Achievable (ALARA) policy adherence. The Radiation Safety Officer/Environmental Coordinator is authorized to address concerns to the President of Umetco and the Remediation Leader.

Table 2.1 2011 Organization Chart for Umetco Minerals Corporation



3.0 ALARA AUDIT

As required by License Condition 16, an ALARA audit was performed in December 2010. The 2011 audit is scheduled for November 2011. A copy of the annual ALARA audit report is retained at the Umetco office in Grand Junction, Colorado, and is available for NRC review.

Current site conditions have reduced radiation exposures to essentially background levels. The dose to a member of the general public is based on historical data which indicate that radon-222 levels are below background levels. Gamma dose to the public historically has been approximately 58 millirem, which is below the 100 millirem standard.

4.0 ANNUAL LAND USE SURVEY

The annual land use survey was prepared in accordance with License Condition 32. Mining, mine reclamation, mineral exploration (for oil and gas), recreational use and seasonal grazing are the primary land uses within the five-mile Land Use Survey radius of the Gas Hills site. No changes in land use have occurred within the survey area since the 2010 annual report was submitted.

The following sections document current land uses.

4.1 Private Residences

The East Gas Hills site is located in a sparsely populated area within Natrona and Fremont counties in central Wyoming. The majority of the land within five miles of the site is public domain under Bureau of Land Management jurisdiction.

The nearest residence, the JE Ranch, is approximately five miles northeast of the site. A metal building with small living quarters has been constructed over the last year. It is occupied for one to two weeks per year as a base camp for hunters and ranch personnel. The nearest full-time residents are located approximately eight miles to the west-southwest at the Puddle Spring Ranch.

4.2 Grazing

Cattle are the primary livestock in the area and normally graze between April and October. Sheep have been observed on several occasions during site visits grazing to the south of the site. Flock sizes appear to be increasing from those observed in previous years. Native grazing species include antelope, deer, and elk.

4.3 Private and Public Potable Water and Agricultural Wells

The results of a search of the Wyoming State Engineers Office Water Rights Database for groundwater and surface water rights within the five-mile survey radius of the East Gas Hills site is given in Appendix A. Three new water rights have been granted since the 2010 annual report. These wells appear to be monitor wells associated with in-situ recovery uranium companies. Umetco is in the process of cancelling unnecessary water rights and transferring the water rights for wells to be kept for long term monitoring to the U. S. Department of Energy.

4.4 Other Operations

Umetco performed maintenance activities on drainage channels at the Rim Pit former mine area during August 2010.

Umetco has one permitted mine within the five-mile survey radius of the Gas Hills site. The Rattlesnake Quarry has been active in the past and produced rock for the reclamation activities at the East Gas Hills site. Due to the erosion protection repair work being conducted this summer, in accordance with License Condition 63 authorized by Amendment 64 dated August 22, 2011, rock crushing activities at the quarry began in August 2011 and will probably continue until the end of November 2011.

Cameco Resources (formerly Power Resources, Inc) is in the permitting stage of an in-situ recovery uranium mining operation and is continues to perform drilling near the Carroll Shop, approximately 2.5 miles south of the East Gas Hills site. A small work force has been observed on numerous occasions at the Carroll Shop.

Rock Springs Minerals continued to mine bentonite near the Clay Borrow site located approximately six miles west of the East Gas Hills site.

Kinder Morgan (SourceGas) continued to use its compressor station located approximately 2.5 miles north of the East Gas Hills site.

A gold operation has been performing exploratory drilling operations at a site located in the Rattlesnake Mountains approximately 8 miles southeast of the Rattlesnake Quarry.

5.0 GROUNDWATER MONITORING REVIEW

Groundwater monitoring was performed in accordance with the *Groundwater Monitoring Plan, Appendix M*, dated March 2002, and revisions dated October 2002, January 2004 and June 2005, as required by License Condition 35A.

5.1 Annual Sampling

The Point of Compliance (POC) wells (MW1, MW21A, GW7 and GW8) were sampled for the Alternate Concentration Limit (ACL) constituents identified in License Conditions 35B and 35C. The POC wells, shown on Figure 1, were sampled in June 2011. The analytical results are shown in Tables 5.1 and 5.2.

Concentration trend plots for the ACL constituents were developed for the POC wells. Concentration trend plots for MW1 and MW21A (Western Flow Regime) are shown in Figures 2 through 9. The concentration trend plots for GW7 and GW8 (Southwestern Flow Regime) are shown in Figures 10 through 17. The ACL value for each constituent is indicated in the applicable concentration plots for comparison. No constituents exceeded the ACL values during the past year.

**Table 5.1 Annual Sampling Results for the Western Flow Regime
Samples Collected on June 18, 2011 for MW21A and June 26, 2011 for MW1**

Analyte	Units	ACL	MW1	MW21A
Arsenic	mg/L	1.8	0.0037	0.0551
Beryllium	mg/L	1.64	0.0009	0.0217
Lead-210	pCi/L	35.4	0 ± 0.74 ^a	2.8 ± 0.89
Nickel	mg/L	13.0	0.29	0.58
Radium-226 + -228	pCi/L	250	3.42 ± 0.35	31.5 ± 0.89
Selenium	mg/L	0.161	0.0561	0.0002 J
Thorium-230	pCi/L	57.4	0.02 ± 0.08	-0.11 ± 0.11
Natural Uranium	mg/L	11.9	6.490	0.0023

J notation indicates estimated value

^a Analysis for Lead-210 in well MW1 did not meet the required detection level. The well was resampled for Lead-210 on September 10, 2011. Analytical results from the well resample were not available before the submittal deadline for this report.

**Table 5.2 Annual Sampling Results for the Southwestern Flow Regime
Collected on June 26, 2011**

Analyte	Units	ACL	GW7	GW8
Arsenic	mg/L	1.36	0.0040	0.0297
Beryllium	mg/L	1.70	0.0310	0.16
Lead-210	pCi/L	189	6.1 ± 1	4 ± 0.92
Nickel	mg/L	9.34	0.59	1.28 J
Radium-226 + -228	pCi/L	353	259 ± 2.3	147 ± 2.0
Selenium	mg/L	0.53	0.0015	0.0012
Thorium-230	pCi/L	44.8	0.06 ± 0.1	0.25 ± 0.14
Natural Uranium	mg/L	34.1	11.30	9.36

J notation indicates estimated value

5.2 Semi-Annual Sampling

As required by Table M-1 of Appendix M, POC wells MW21A and GW7 and the non-POC wells were sampled semiannually in October 2010 and June 2011 for natural uranium, chloride and sulfate and measured for water levels. The analytical results are shown in Tables 5.3 and 5.4.

A water level elevation map is provided in Figure 18. Hydrographs for Western Flow Regime POC and non-POC wells are shown in Figures 19 and 20. The Southwestern Flow Regime hydrographs are shown in Figures 21 and 22.

Concentration trend plots of chloride and sulfate for the POC wells are shown in Figures 23 through 26. Chloride, sulfate and natural uranium trends for the non-POC wells are shown in Figures 27 through 33.

Table 5.5 compares the chloride and sulfate results of the four groundwater model validation wells (MW28, MW71B, MW72 and MW82) to the target level concentrations derived from the figures in Appendix M, and its subsequent revisions. The target levels and actual results are shown in Figures 34 through 41. Actual data from all the model validation wells are below the predicted target levels except for model validation well MW28. Umetco is presently evaluating the high sulfate and chloride results in Model Validation Well MW28 over the last year.

Table 5.3 Semi-Annual Sampling Results for the Western Flow Regime

Monitoring Location	Sampling Date	Analyte (mg/L)		
		Chloride	Sulfate	Natural Uranium ⁽¹⁾
MW1	6-26-11	39	1540	6.490
MW21A	10-19-10	120	1970	0.0082
	6-18-11	130	2070	0.0023
MW25	10-22-10	80	2600	0.0016
	6-18-11	76	2670	0.0025
MW28 ⁽²⁾	10-19-10	110	1970	0.0022
	6-18-11	100	2100	0.0024
MWI64	10-20-10	30 J	1080	4.330
	6-19-11	15	380	0.901
MW70A	10-19-10	160	2500	4.340
	6-18-11	160	2600	2.860
MW71B ⁽²⁾	10-22-10	51	850	0.0014
	6-18-11	54	870	0.0017
MW77	10-22-10	<10	760	0.0011
	6-19-11	7	860	0.0027
Iron Springs	10-21-10	16	630	0.0885
	6-19-11	12	830	0.0202

(1) There are no action levels for natural uranium at the non-POC wells.

(2) MW28 and MW71B are Model Validation Wells for Western Flow Regime.

J notation indicates estimated value

Table 5.4 Semi-Annual Sampling Results for the Southwestern Flow Regime

Monitoring Location	Sampling Date	Analyte (mg/L)		
		Chloride	Sulfate	Natural Uranium ⁽¹⁾
GW7	10-19-10	190	950	10.30
	6-26-11	220	900	11.30
GW8	6-26-11	330	2290	9.36
PW4	10-19-10	240	1550	0.3335
	6-26-11	210	1620	0.2892
MW72 ⁽²⁾	10-19-10	43	1000	0.3708
	6-19-11	100	820	0.2196
MW82 ⁽²⁾	10-19-10	71	690	0.0524
	6-19-11	70	690	0.0548

(1) There are no action levels for natural uranium in non-POC wells.

(2) MW72 and MW82 are Model Validation Wells for the Southwestern Flow Regime.

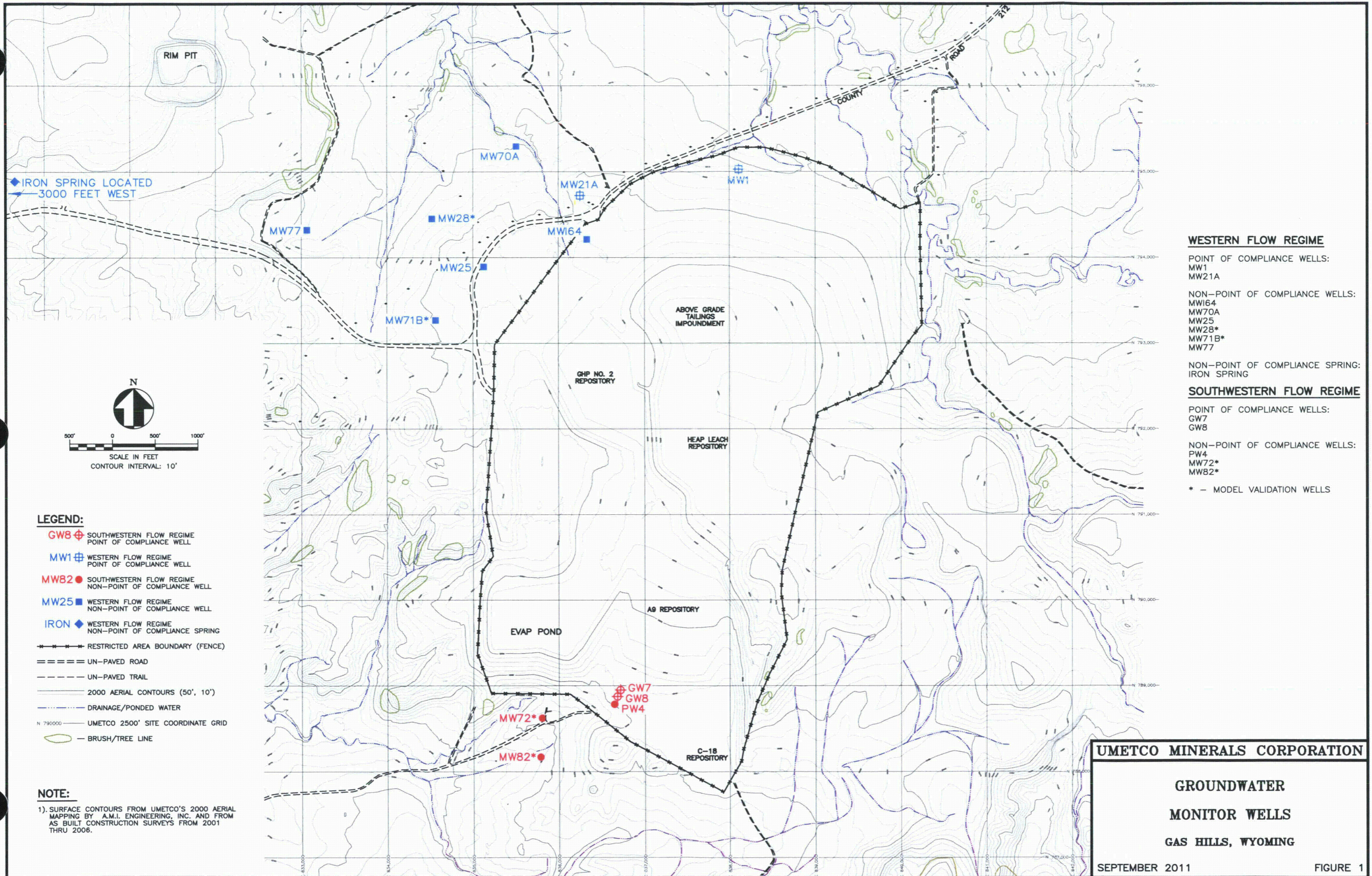
Table 5.5 Comparison of June 2011 Chloride and Sulfate Concentrations in the Model Validation Wells versus Actual Concentrations

Model Validation Well	Chloride Concentration (mg/L)		Sulfate Concentration (mg/L)	
	Target ⁽¹⁾	Actual	Target ⁽¹⁾	Actual
MW28	106	100	2053	2100
MW71B	83	54	1460	870
MW72	155	100	1696	820
MW82	250	70	1443	690

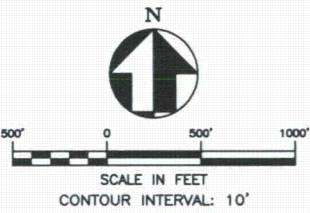
(1) Target concentrations were derived from the simulation figures in *Groundwater Monitoring Plan, Appendix M*, dated March 2002, and revisions dated October 2002, January 2004 and June 2005.

6.0 REFERENCES

- Umetco Minerals Corporation. March 2002. *Application for Alternate Concentration Limits for Gas Hills, Wyoming, Appendix M - Groundwater Monitoring Plan.*
- Umetco Minerals Corporation. October 2002. *Application for Alternate Concentration Limits for Gas Hills, Wyoming, Appendix M – Groundwater Monitoring Plan; Revised Tables M-1 and 5 and Figures 4a(r), 4b(r), 7a(r) and 7b(r).*
- Umetco Minerals Corporation. January 2004. *Application for Alternate Concentration Limits for Gas Hills, Wyoming, Appendix M – Groundwater Monitoring Plan; Revised Table 3 and Figures 2a, 2b, 6a and 6b.*
- Umetco Minerals Corporation. June 2005. *Application for Alternate Concentration Limits for Gas Hills, Wyoming, Appendix M – Groundwater Monitoring Plan; Revised Table M-1.*
- U.S. Nuclear Regulatory Commission. August 22, 2011. License Condition Changes for License SUA-648, Amendment No. 6457.4p.
- U.S. Nuclear Regulatory Commission. August 22, 2011. License Condition Changes for License SUA-648, Amendment No. 65.



◆ IRON SPRING LOCATED
← 3000 FEET WEST



- LEGEND:**
- GW8 ⊕ SOUTHWESTERN FLOW REGIME POINT OF COMPLIANCE WELL
 - MW1 ⊕ WESTERN FLOW REGIME POINT OF COMPLIANCE WELL
 - MW82 ● SOUTHWESTERN FLOW REGIME NON-POINT OF COMPLIANCE WELL
 - MW25 ■ WESTERN FLOW REGIME NON-POINT OF COMPLIANCE WELL
 - IRON ◆ WESTERN FLOW REGIME NON-POINT OF COMPLIANCE SPRING
 - ⊕-⊕-⊕-⊕- RESTRICTED AREA BOUNDARY (FENCE)
 - ==== UN-PAVED ROAD
 - - - - UN-PAVED TRAIL
 - 2000 AERIAL CONTOURS (50', 10')
 - DRAINAGE/PONDED WATER
 - N 790000 — UMETCO 2500' SITE COORDINATE GRID
 - BRUSH/TREE LINE

NOTE:
1). SURFACE CONTOURS FROM UMETCO'S 2000 AERIAL MAPPING BY A.M.I. ENGINEERING, INC. AND FROM AS BUILT CONSTRUCTION SURVEYS FROM 2001 THRU 2006.

WESTERN FLOW REGIME

POINT OF COMPLIANCE WELLS:
MW1
MW21A

NON-POINT OF COMPLIANCE WELLS:
MW164
MW70A
MW25
MW28*
MW71B*
MW77

NON-POINT OF COMPLIANCE SPRING:
IRON SPRING

SOUTHWESTERN FLOW REGIME

POINT OF COMPLIANCE WELLS:
GW7
GW8

NON-POINT OF COMPLIANCE WELLS:
PW4
MW72*
MW82*

* — MODEL VALIDATION WELLS

UMETCO MINERALS CORPORATION

**GROUNDWATER
MONITOR WELLS
GAS HILLS, WYOMING**

SEPTEMBER 2011

FIGURE 1

Figure 2 Arsenic Trends in the Western Flow Regime POC Wells

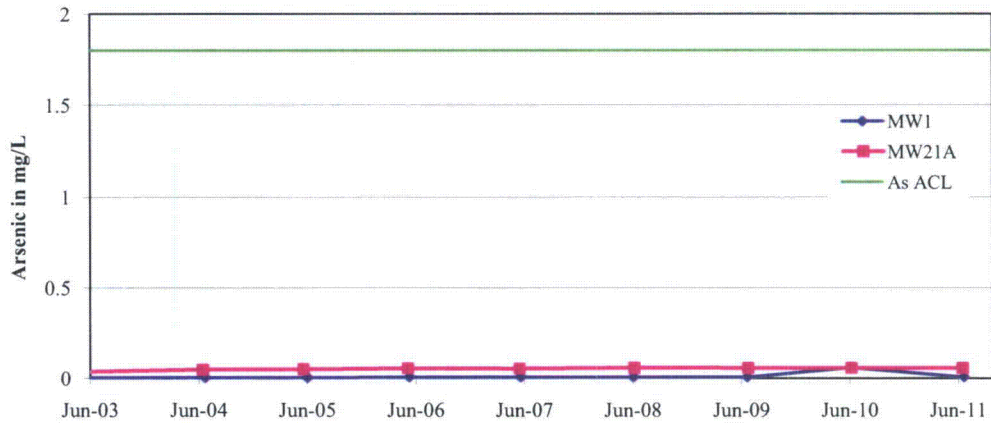


Figure 3 Beryllium Trends in the Western Flow Regime POC Wells

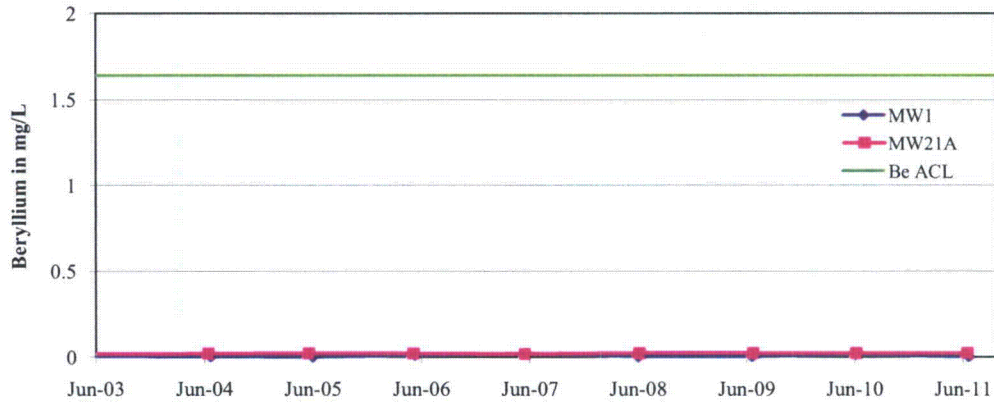


Figure 4 Lead-210 Trends in the Western Flow Regime POC Wells

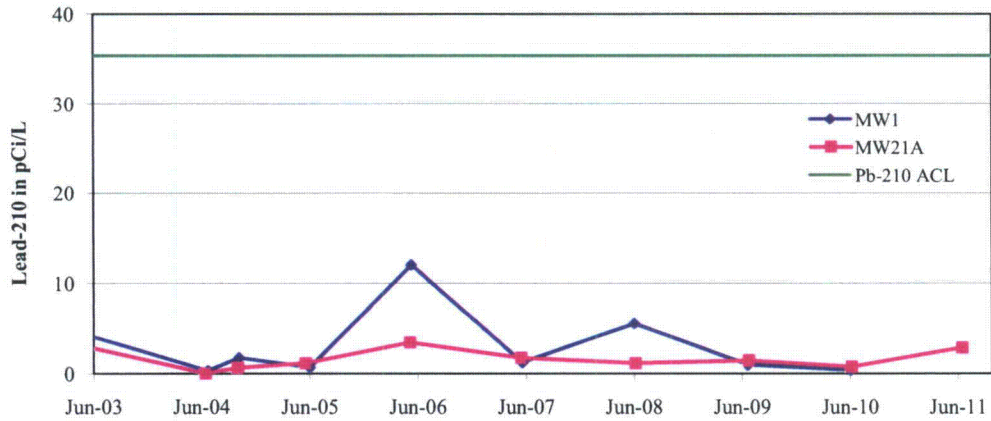


Figure 5 Nickel Trends in the Western Flow Regime POC Wells

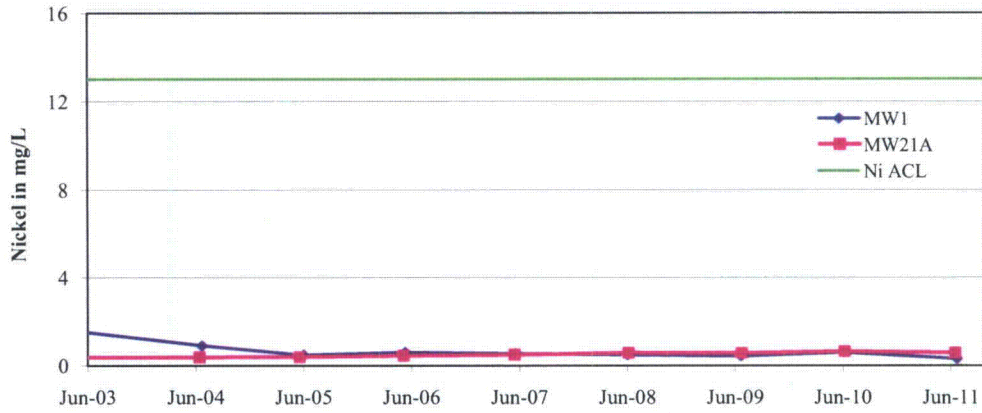


Figure 6 Combined Radium-226 & 228 Trends in the Western Flow Regime POC Wells

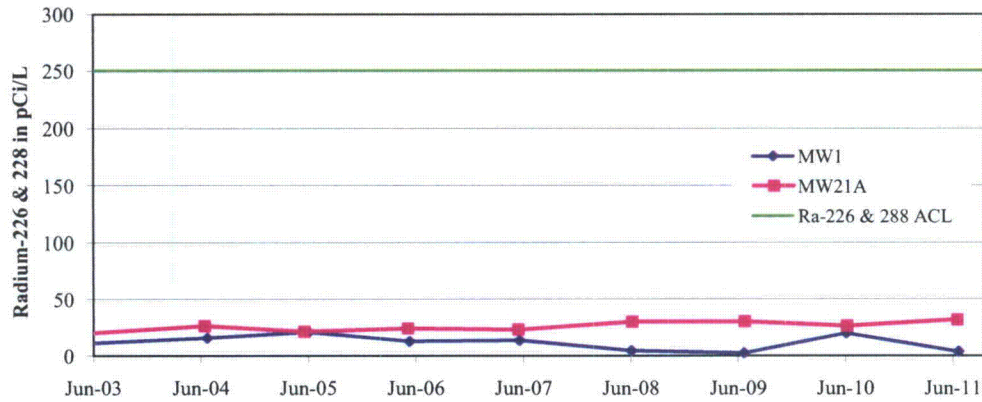


Figure 7 Selenium Trends in the Western Flow Regime POC Wells

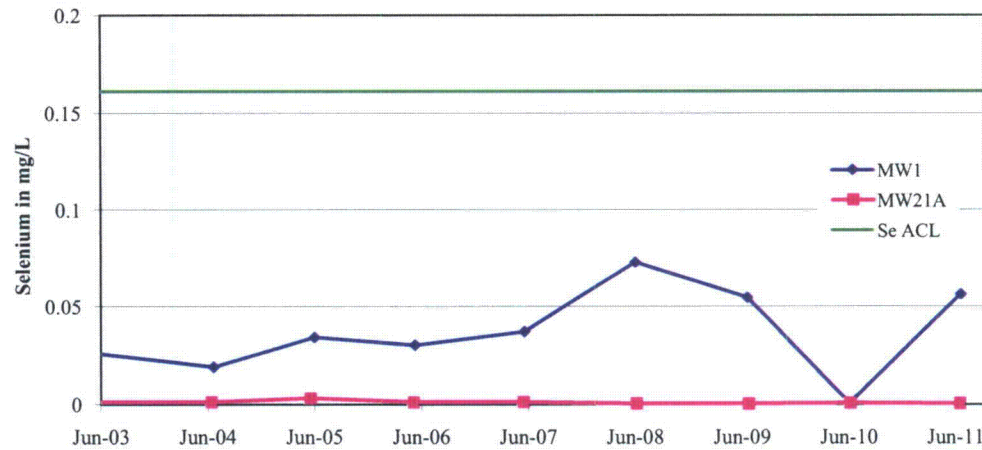


Figure 8 Thorium-230 Trends in the Western Flow Regime POC Wells

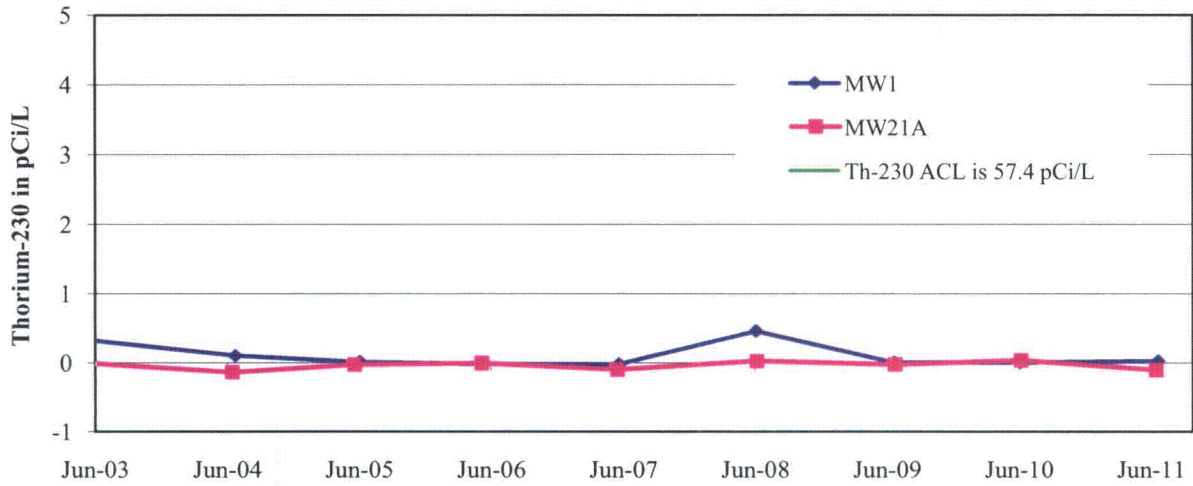


Figure 9 Natural Uranium Trends in the Western Flow Regime POC Wells

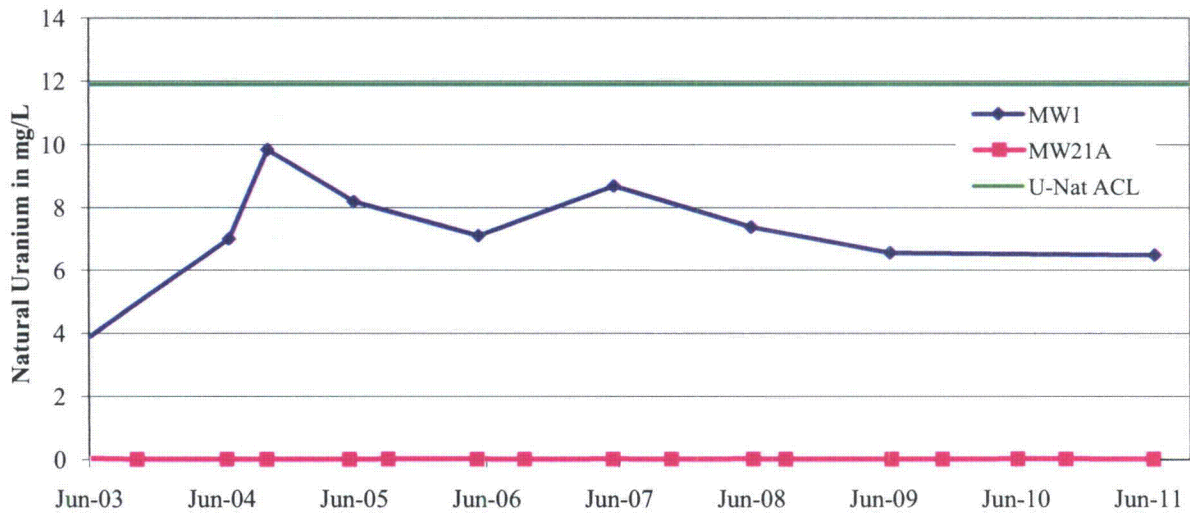


Figure 10 Arsenic Trends in the Southwestern Flow Regime POC Wells

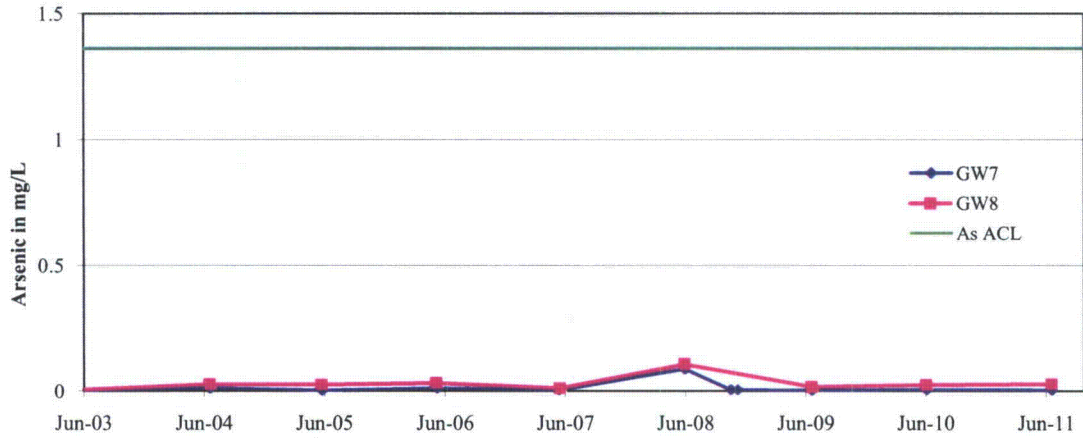


Figure 11 Beryllium Trends in the Southwestern Flow Regime POC Wells

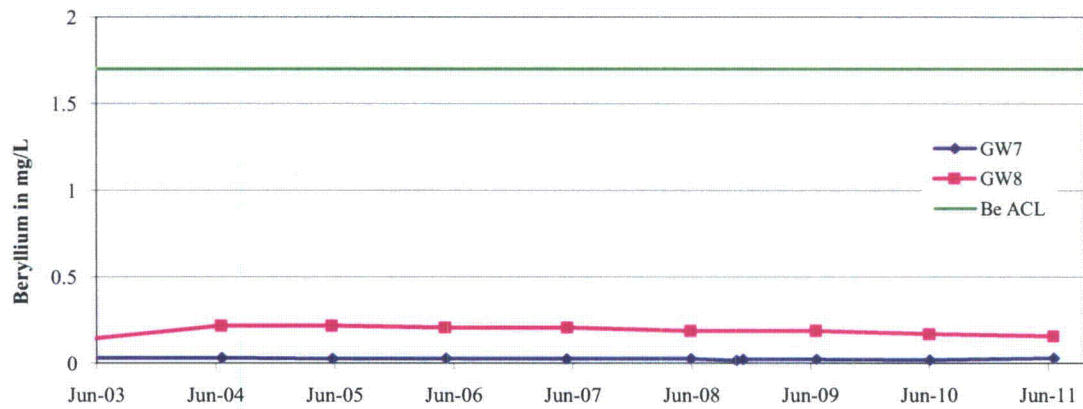


Figure 12 Lead-210 Trends in the Southwestern Flow Regime POC Wells

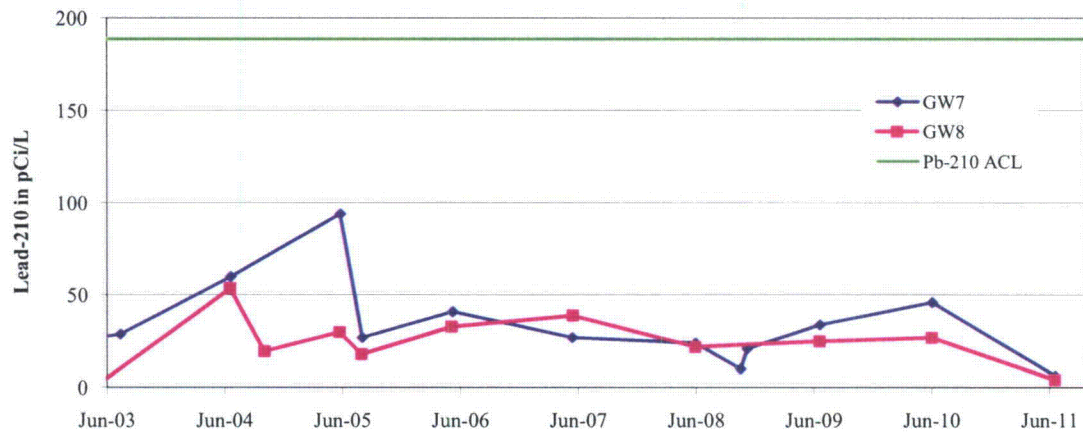


Figure 13 Nickel Trends in the Southwestern Flow Regime POC Wells

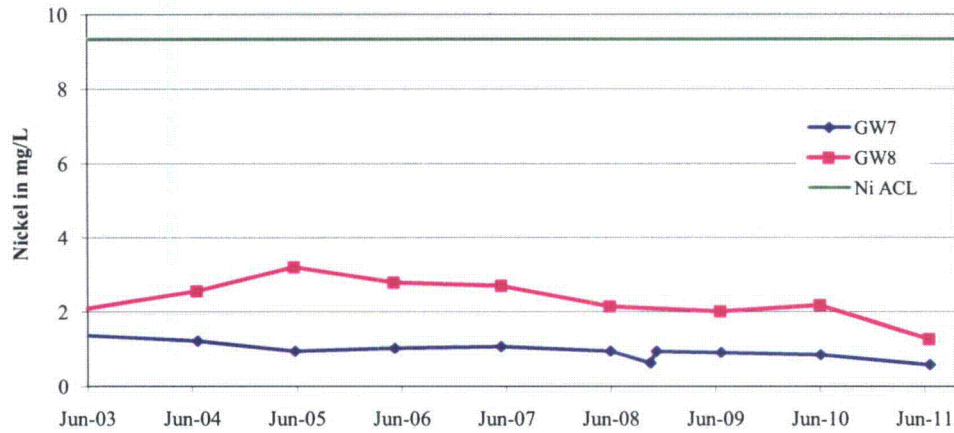


Figure 14 Combined Radium-226 & 228 Trends in the Southwestern Flow Regime POC Wells

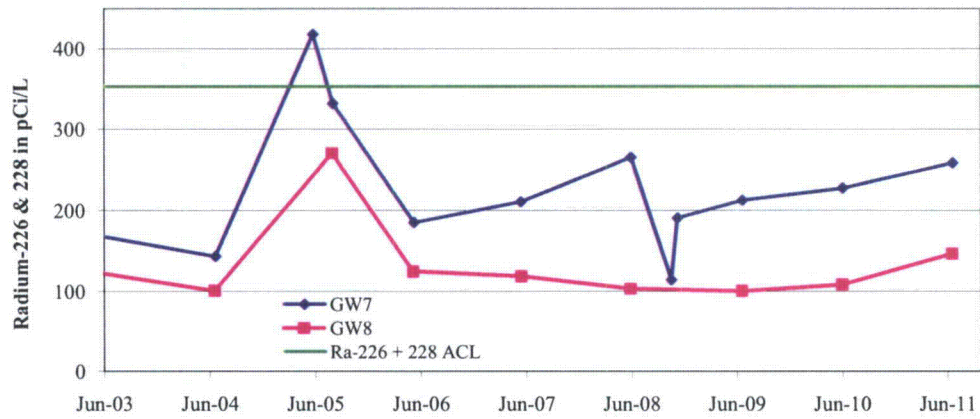


Figure 15 Selenium Trends in the Southwestern Flow Regime POC Wells

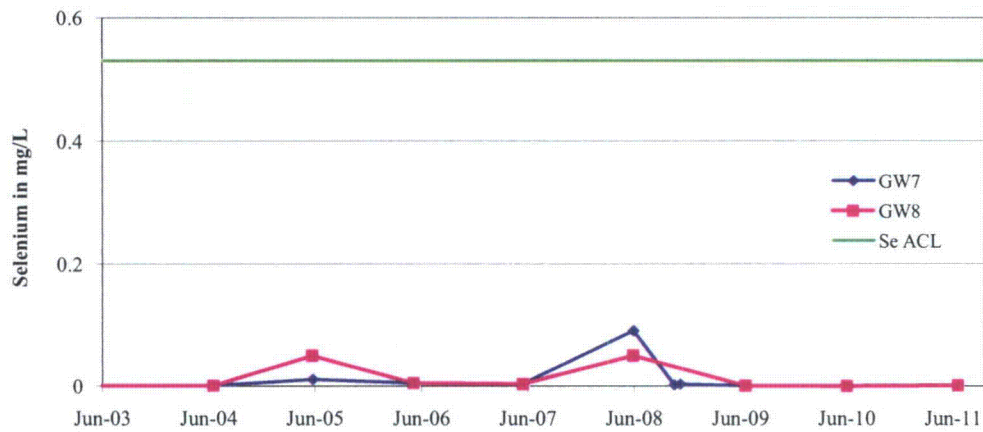


Figure 16 Thorium-230 Trends in the Southwestern Flow Regime POC Wells

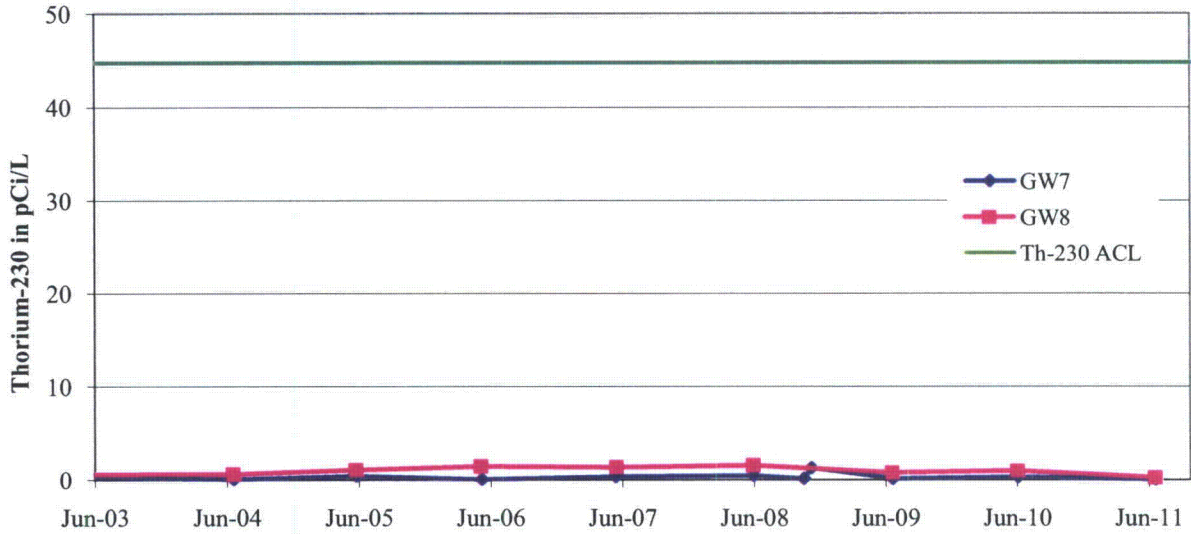
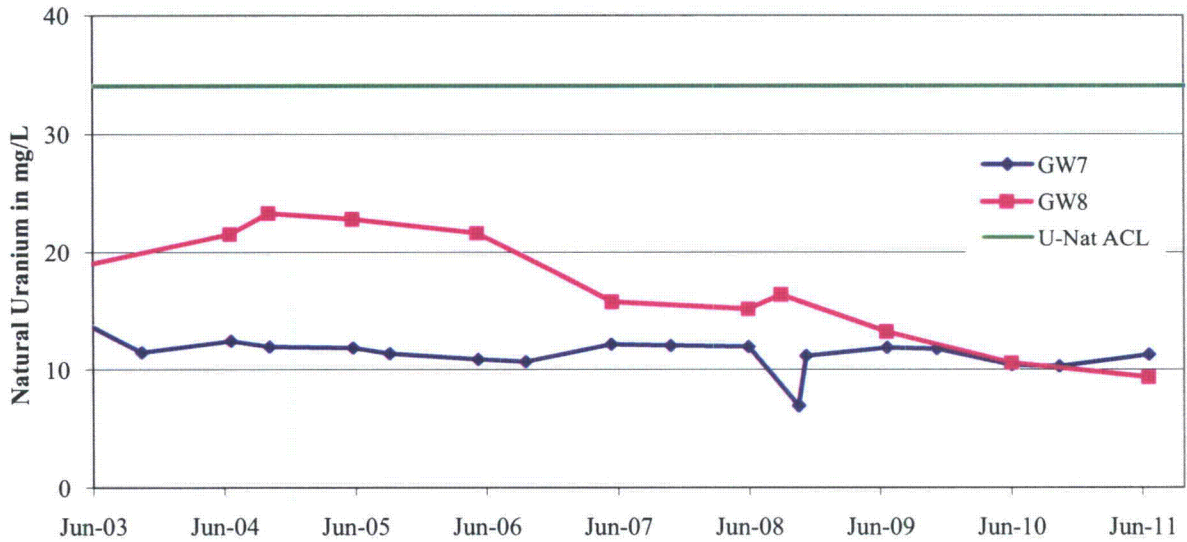
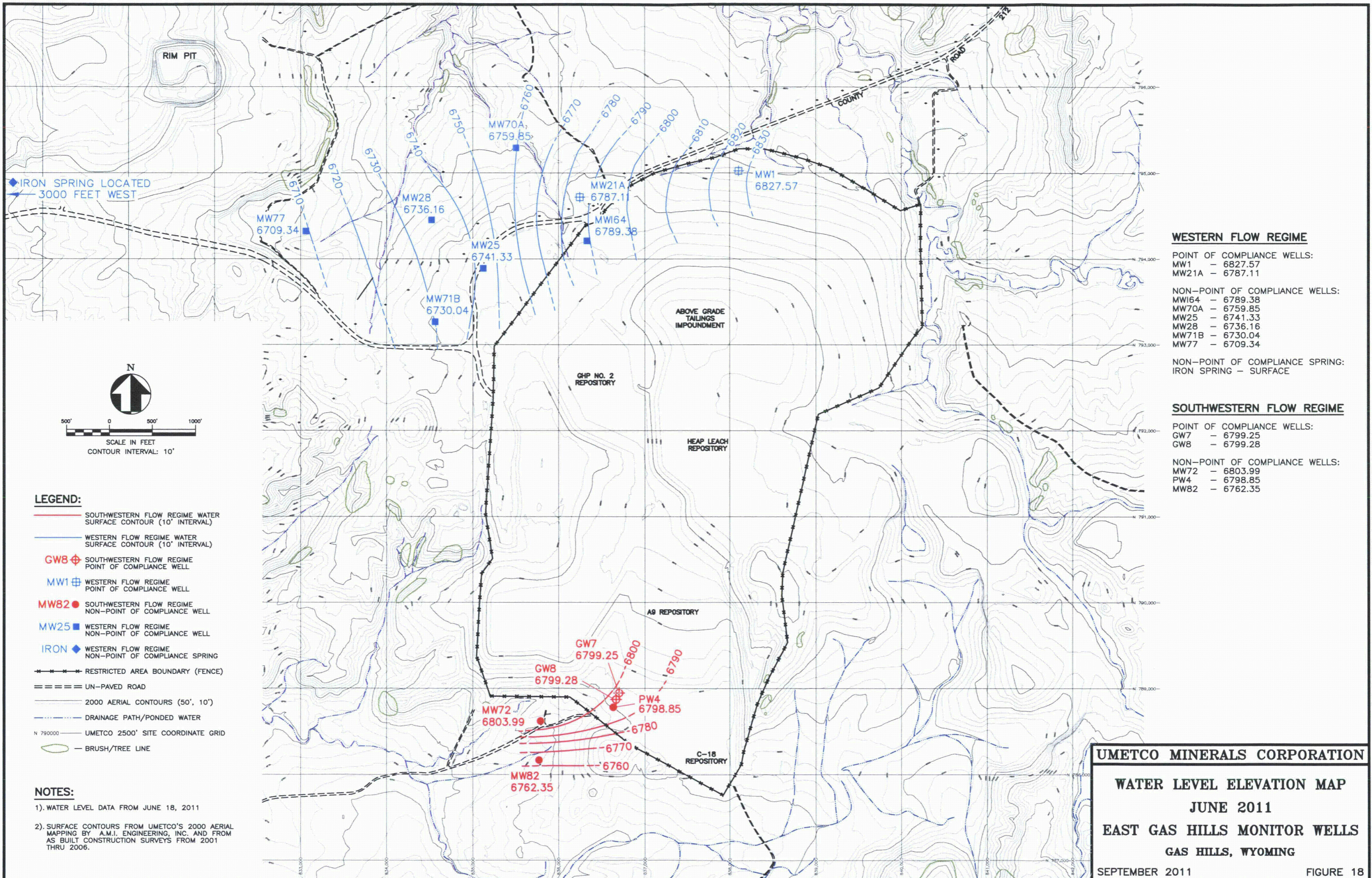


Figure 17 Natural Uranium Trends in the Southwestern Flow Regime POC Wells





UMETCO MINERALS CORPORATION
WATER LEVEL ELEVATION MAP
JUNE 2011
EAST GAS HILLS MONITOR WELLS
GAS HILLS, WYOMING
 SEPTEMBER 2011 FIGURE 18

Figure 19 Phreatic Elevations in the Western Flow Regime POC Wells

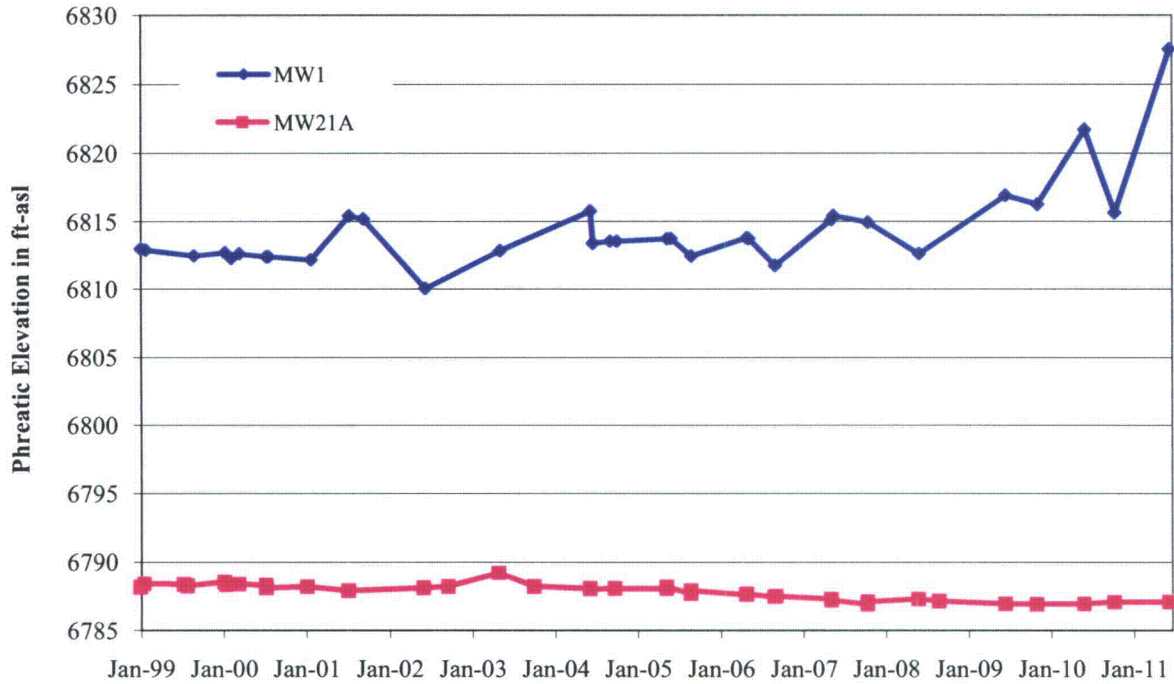


Figure 20 Phreatic Elevations in the Western Flow Regime Monitoring Wells

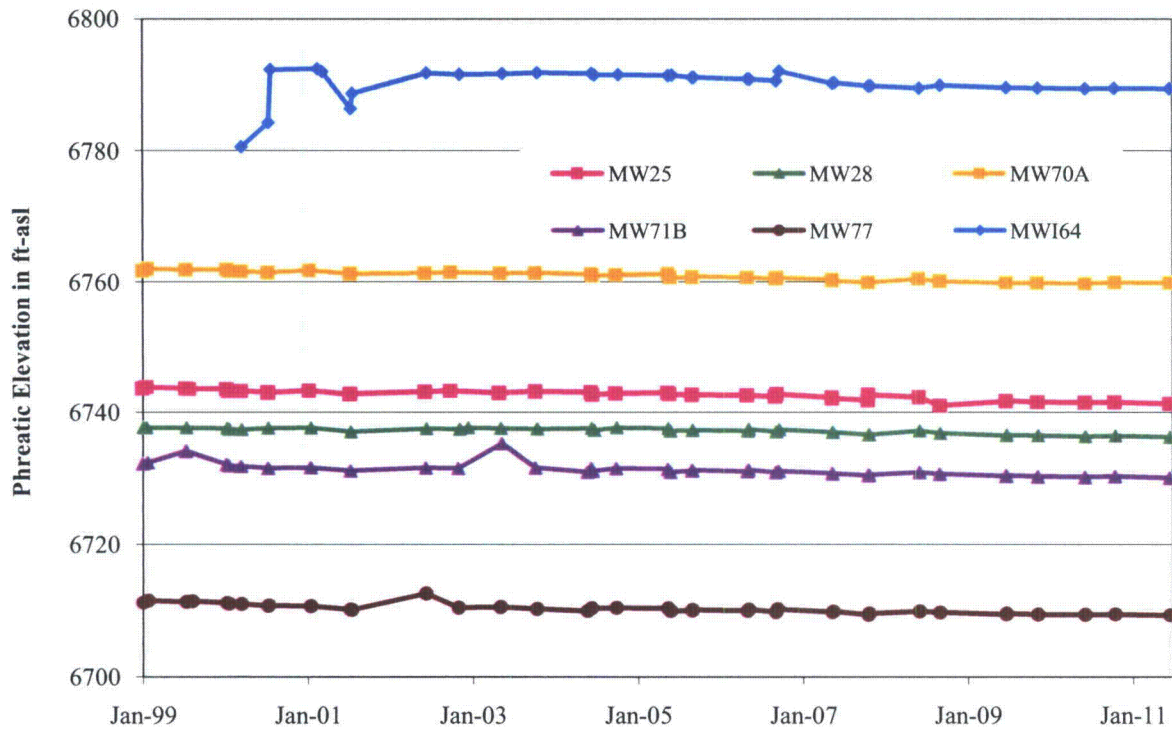


Figure 21 Phreatic Elevations in the Southwestern Flow Regime POC Wells

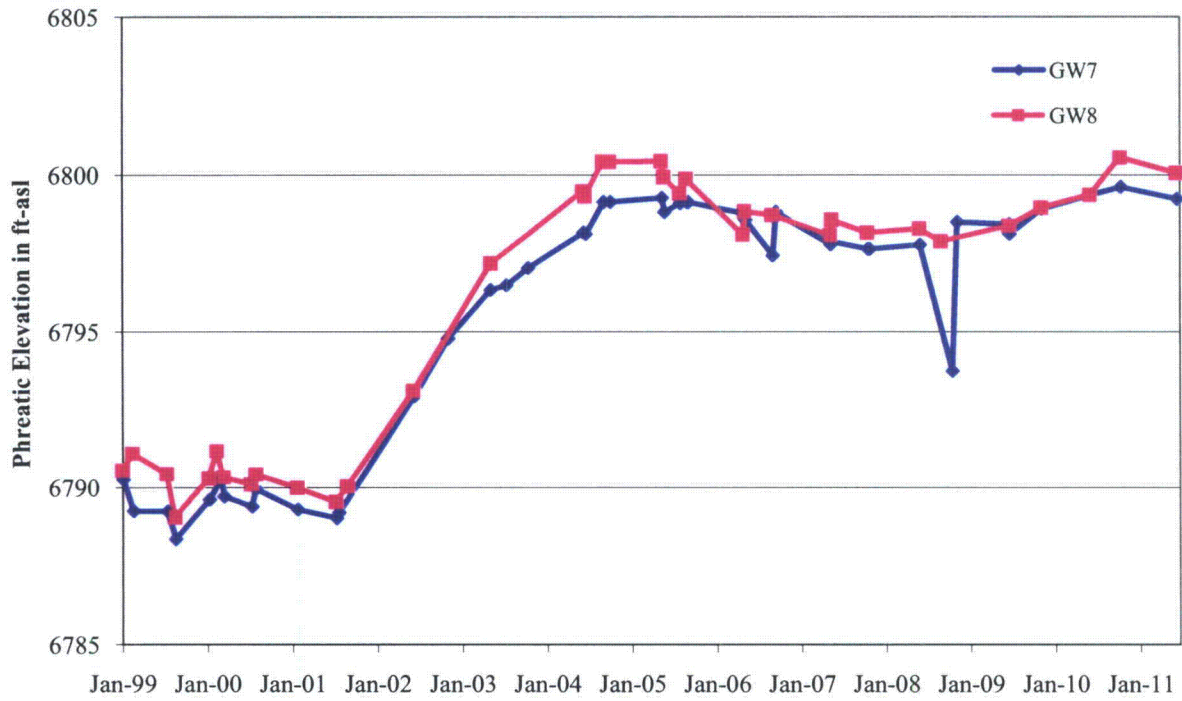


Figure 22 Phreatic Elevations in the Southwestern Flow Regime Monitoring Wells

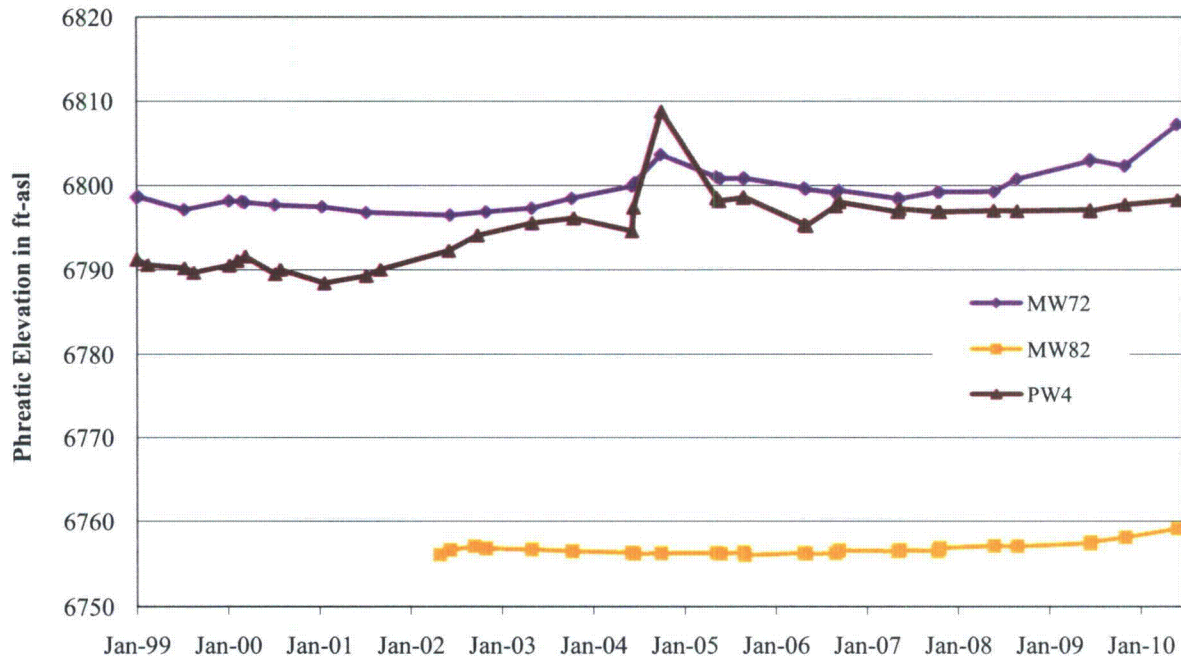


Figure 23 Chloride Trends in the Western Flow Regime POC Wells

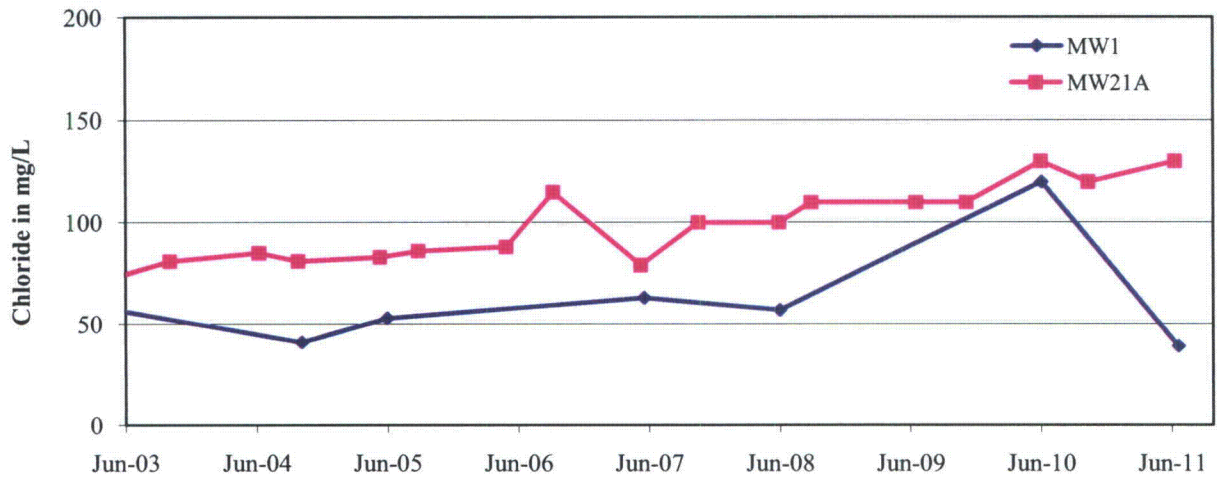


Figure 24 Sulfate Trends in the Western Flow Regime POC Wells

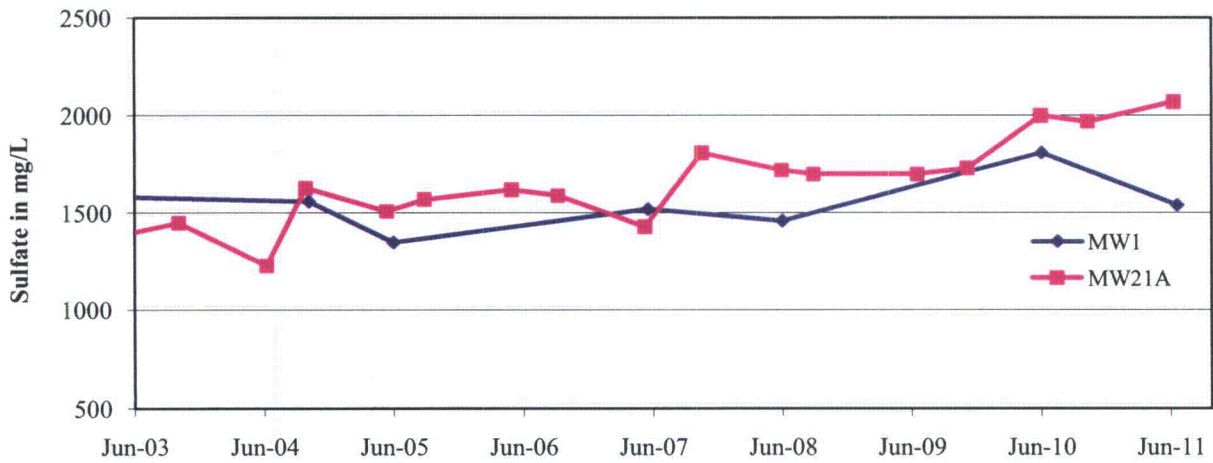


Figure 25 Chloride Trends in the Southwestern Flow Regime POC Wells

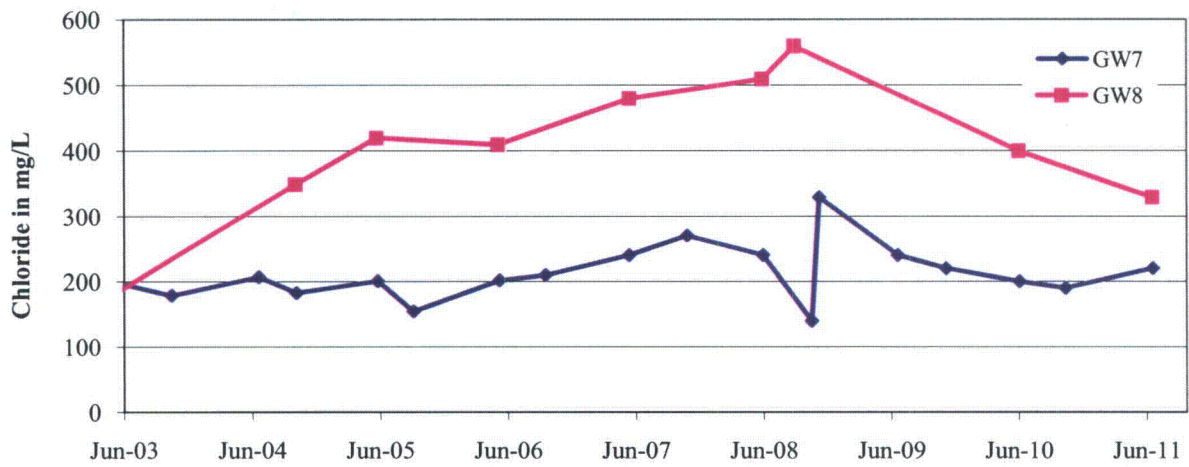


Figure 26 Sulfate Trends in the Southwestern Flow Regime POC Wells

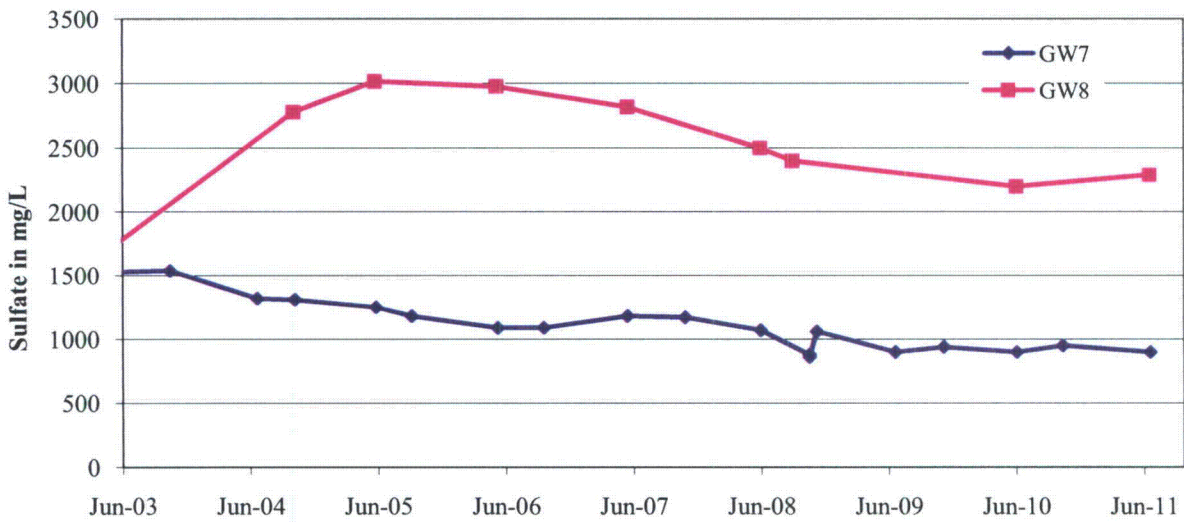


Figure 27 Natural Uranium Trends in the Western Flow Regime Monitoring Wells

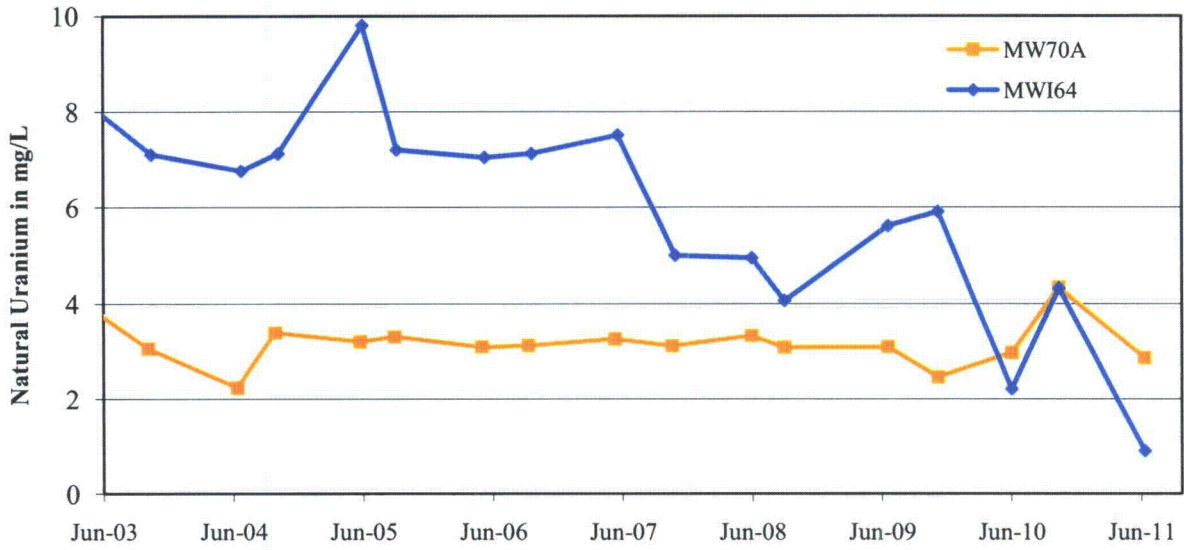


Figure 28 Natural Uranium Trends in the Western Flow Regime Monitoring Wells

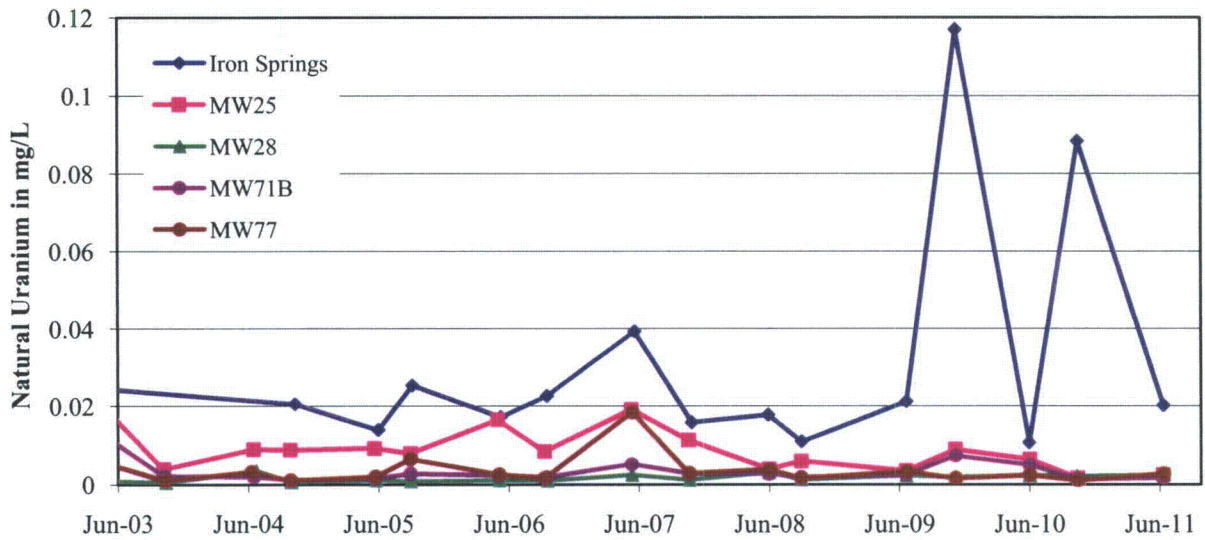


Figure 29 Chloride Trends in the Western Flow Regime Monitoring Wells

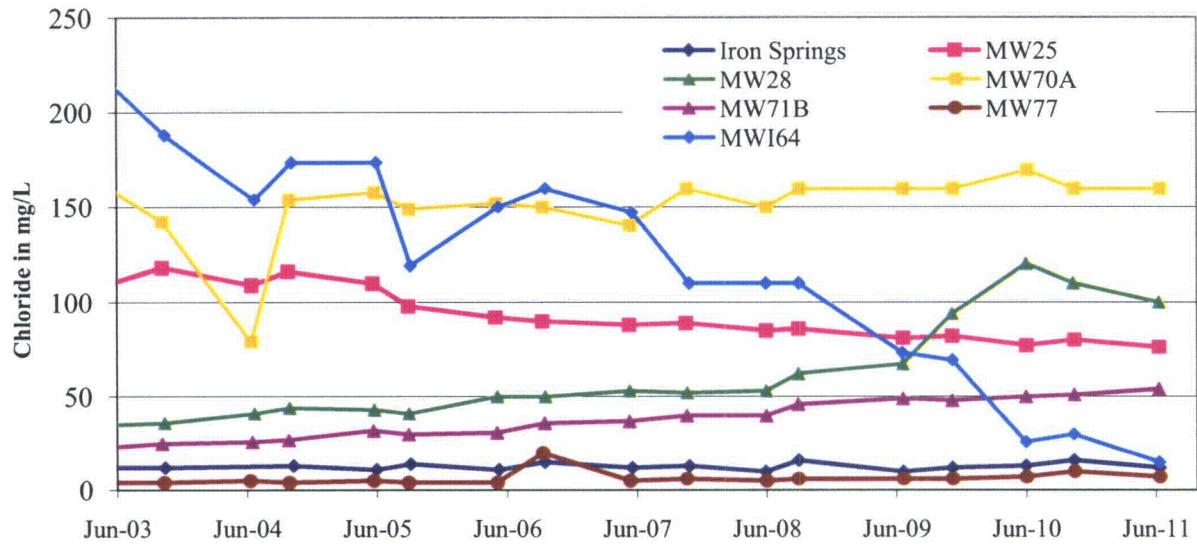


Figure 30 Sulfate Trends in the Western Flow Regime Monitoring Wells

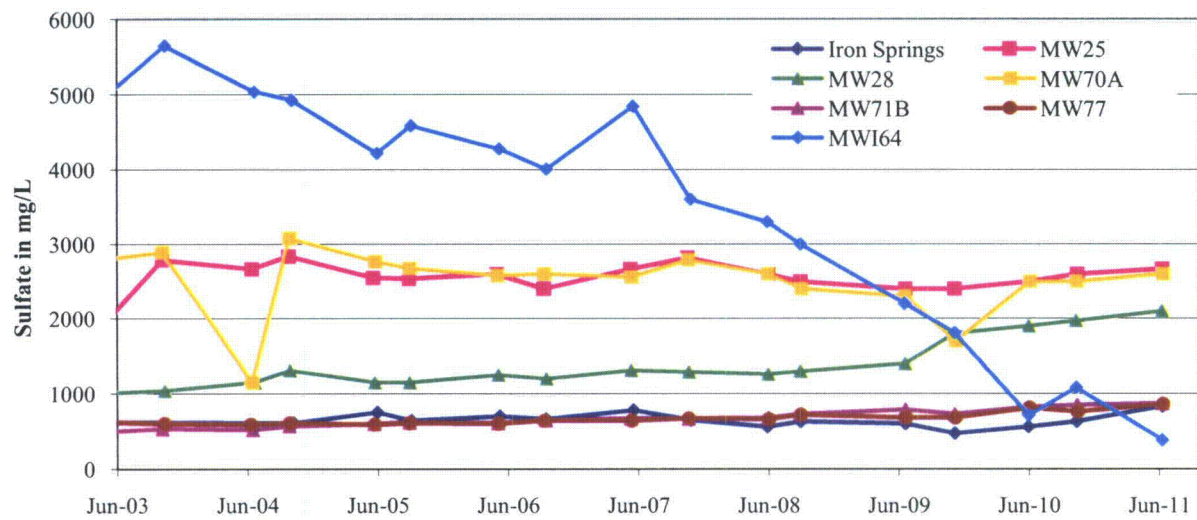


Figure 31 Chloride Trends in the Southwestern Flow Regime Monitoring Wells

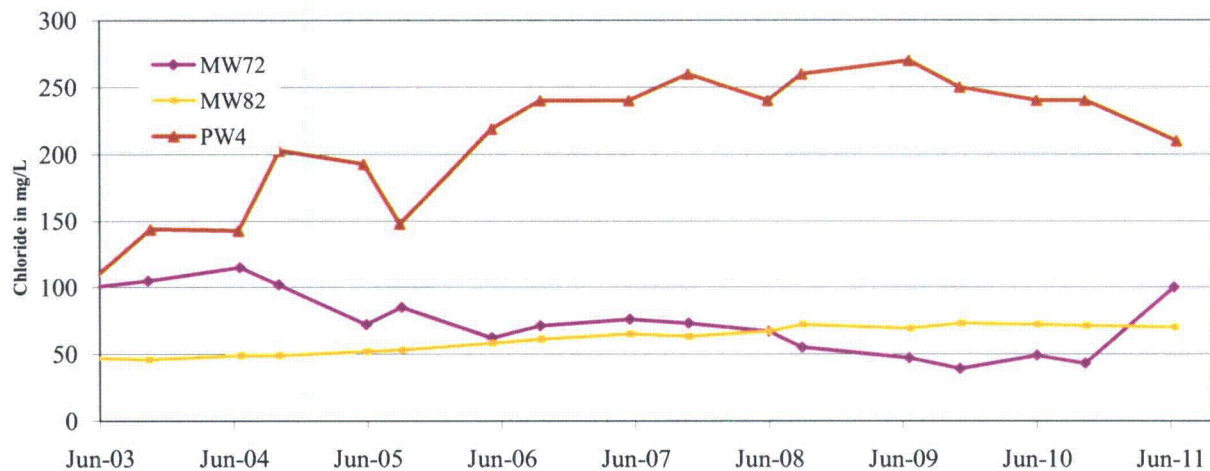


Figure 32 Sulfate Trends in the Southwestern Flow Regime Monitoring Wells

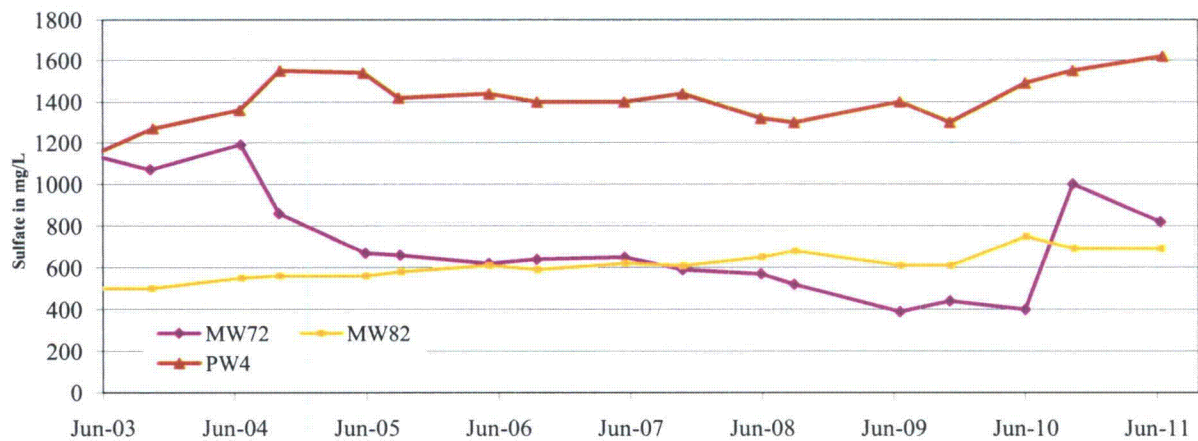


Figure 33 Natural Uranium Trends in the Southwestern Flow Regime Monitoring Wells

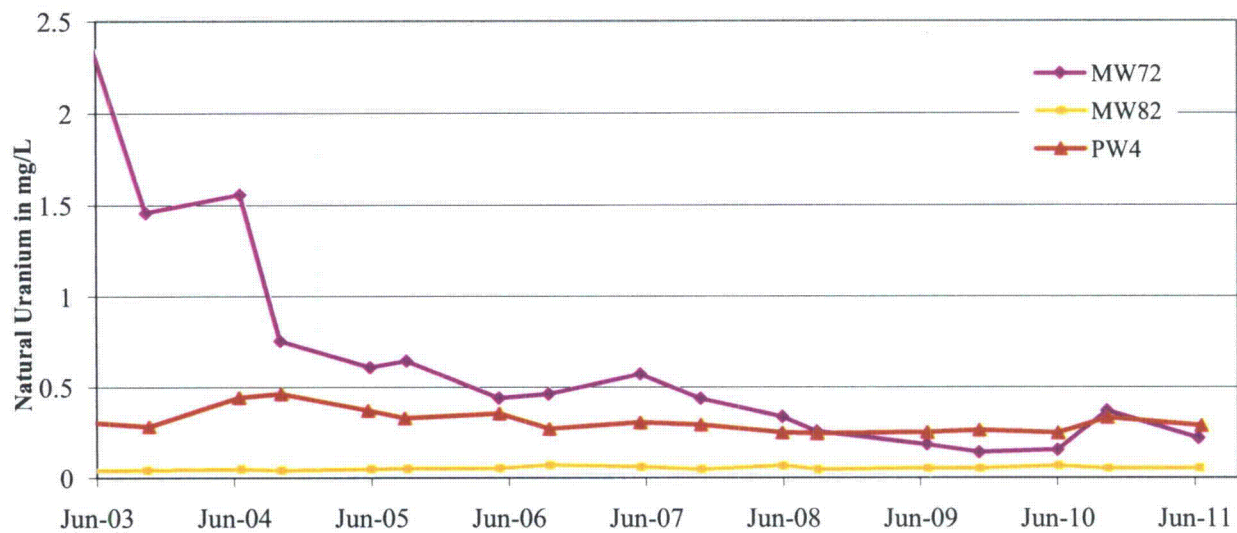


Figure 34 Simulated Chloride Trends at MW28 (50 Years) Versus Actual Data
Western Flow Regime

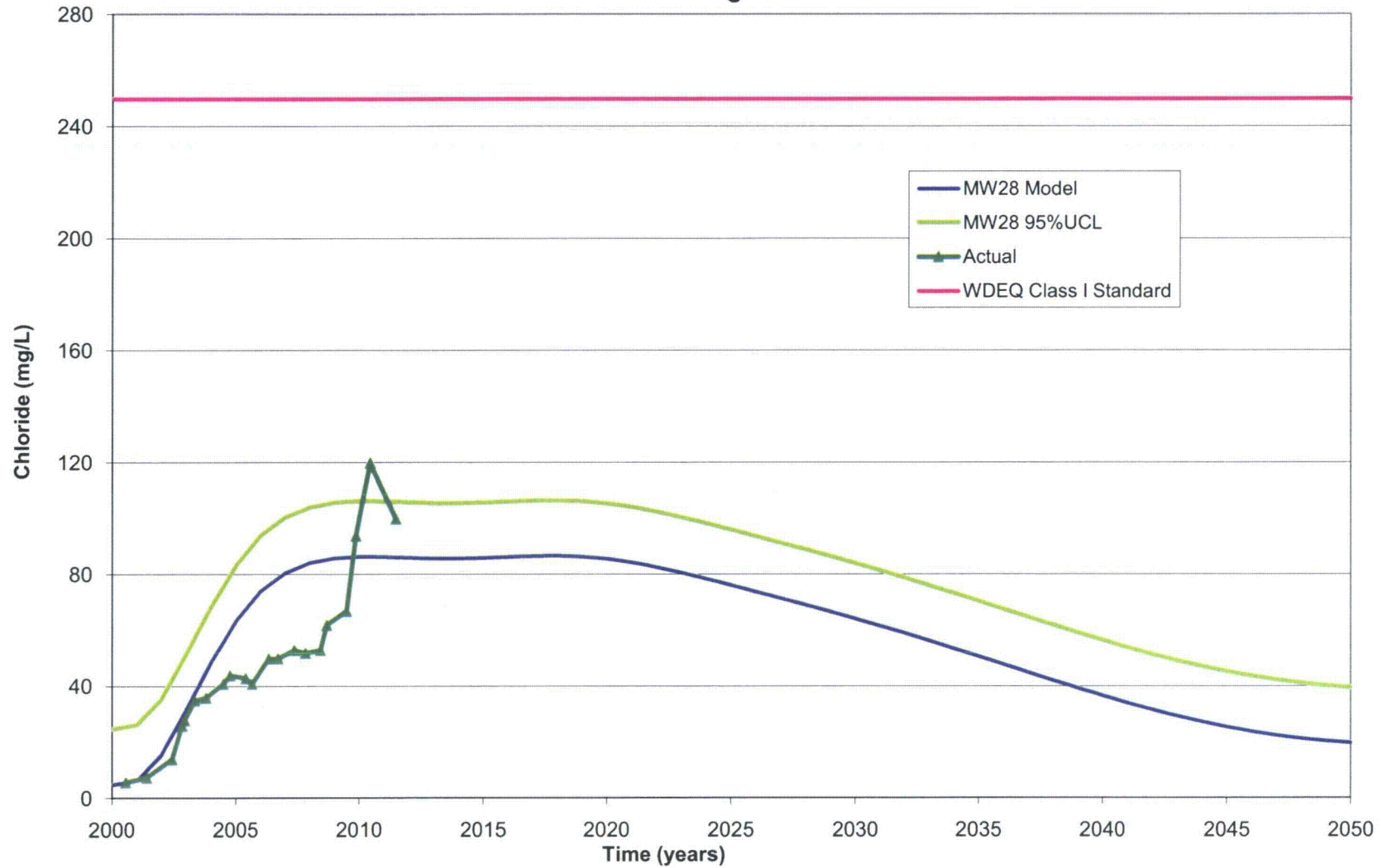


Figure 35 Simulated Chloride Trends at MW71B (50 Years) Versus Actual Data
Western Flow Regime

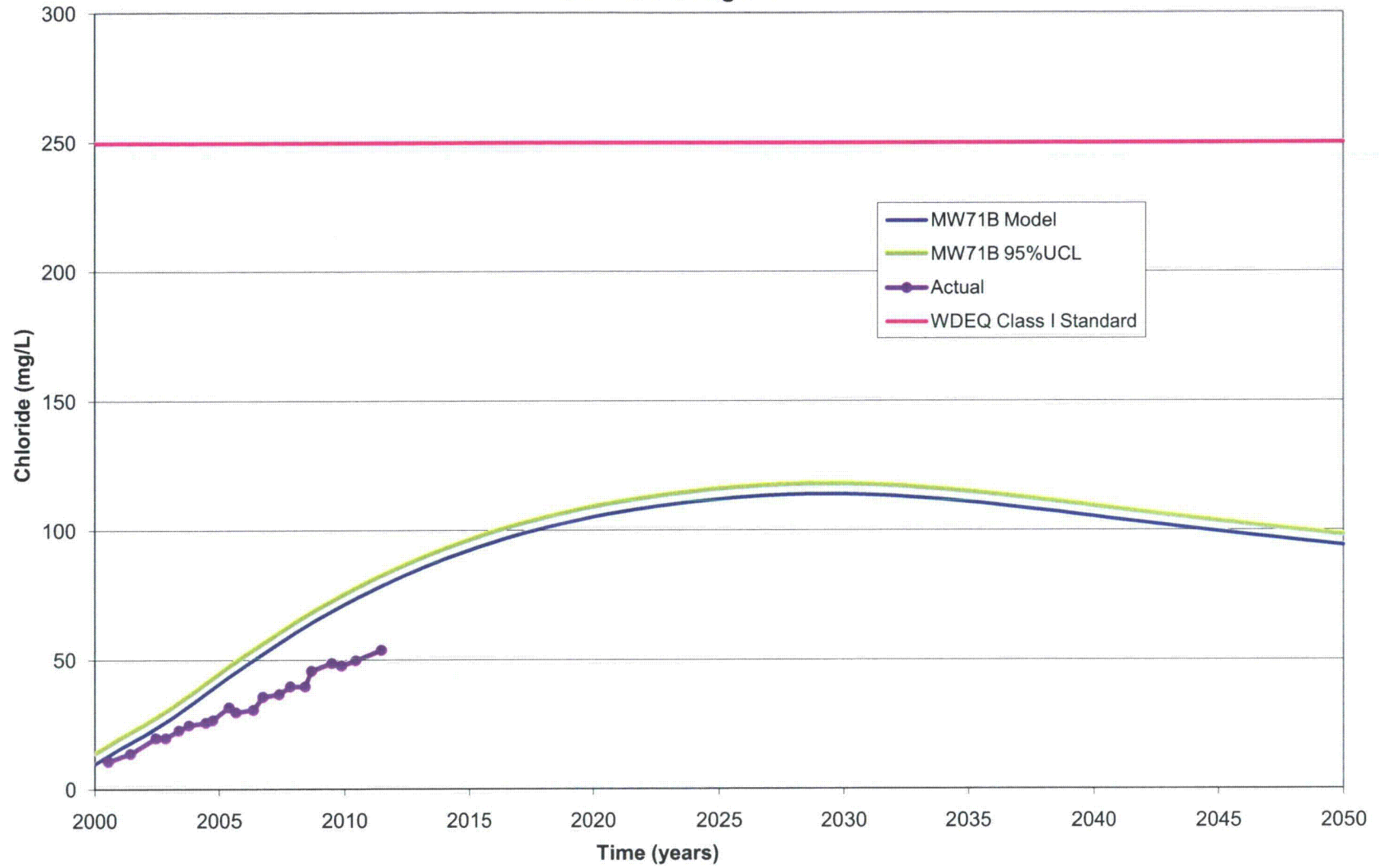


Figure 36 Simulated Chloride Trends at MW72 (50 Years) Versus Actual Data
Southwestern Flow Regime

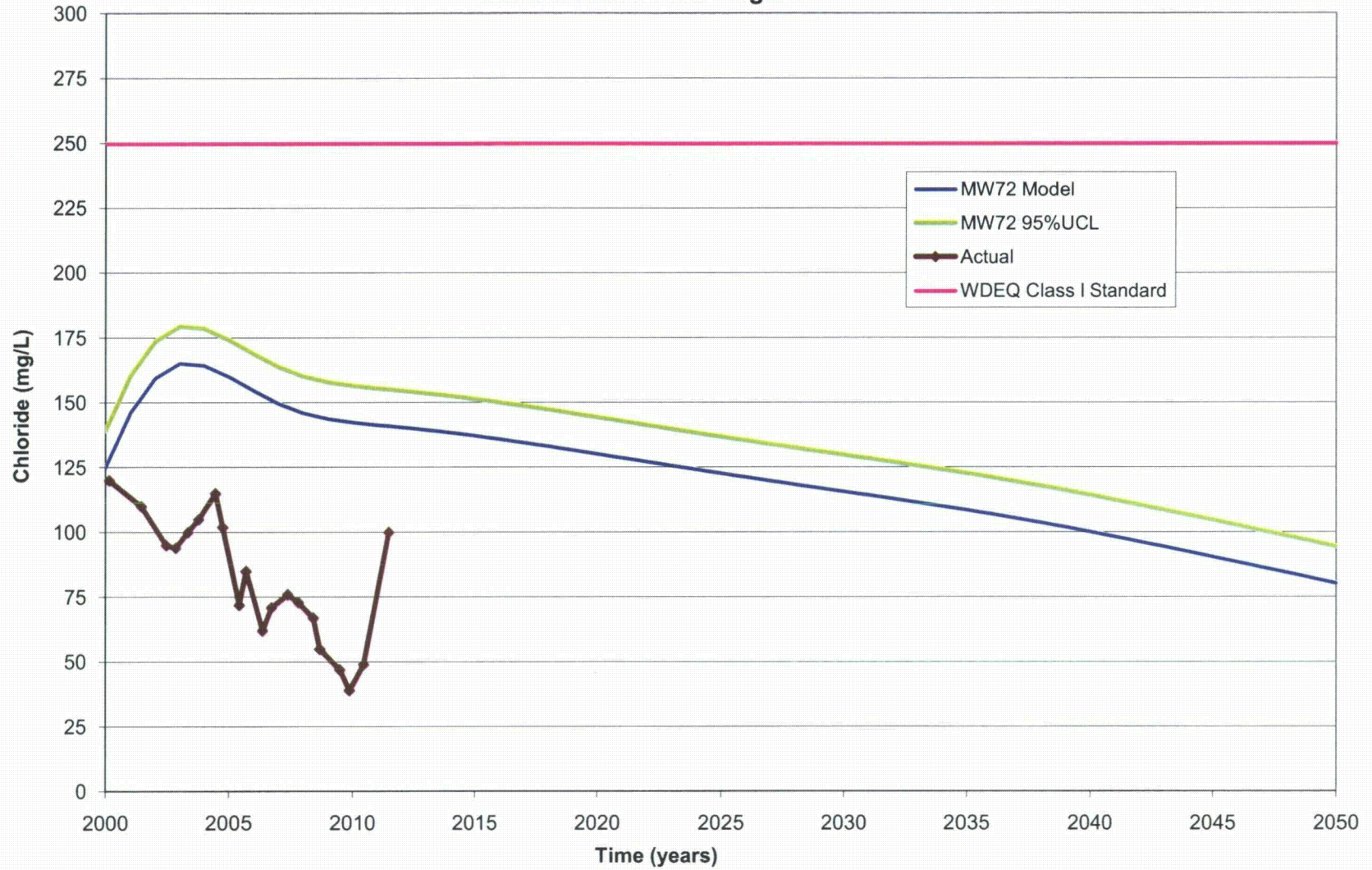


Figure 37 Simulated Chloride Trends at MW82 (50 Years) Versus Actual Data
Southwestern Flow Regime

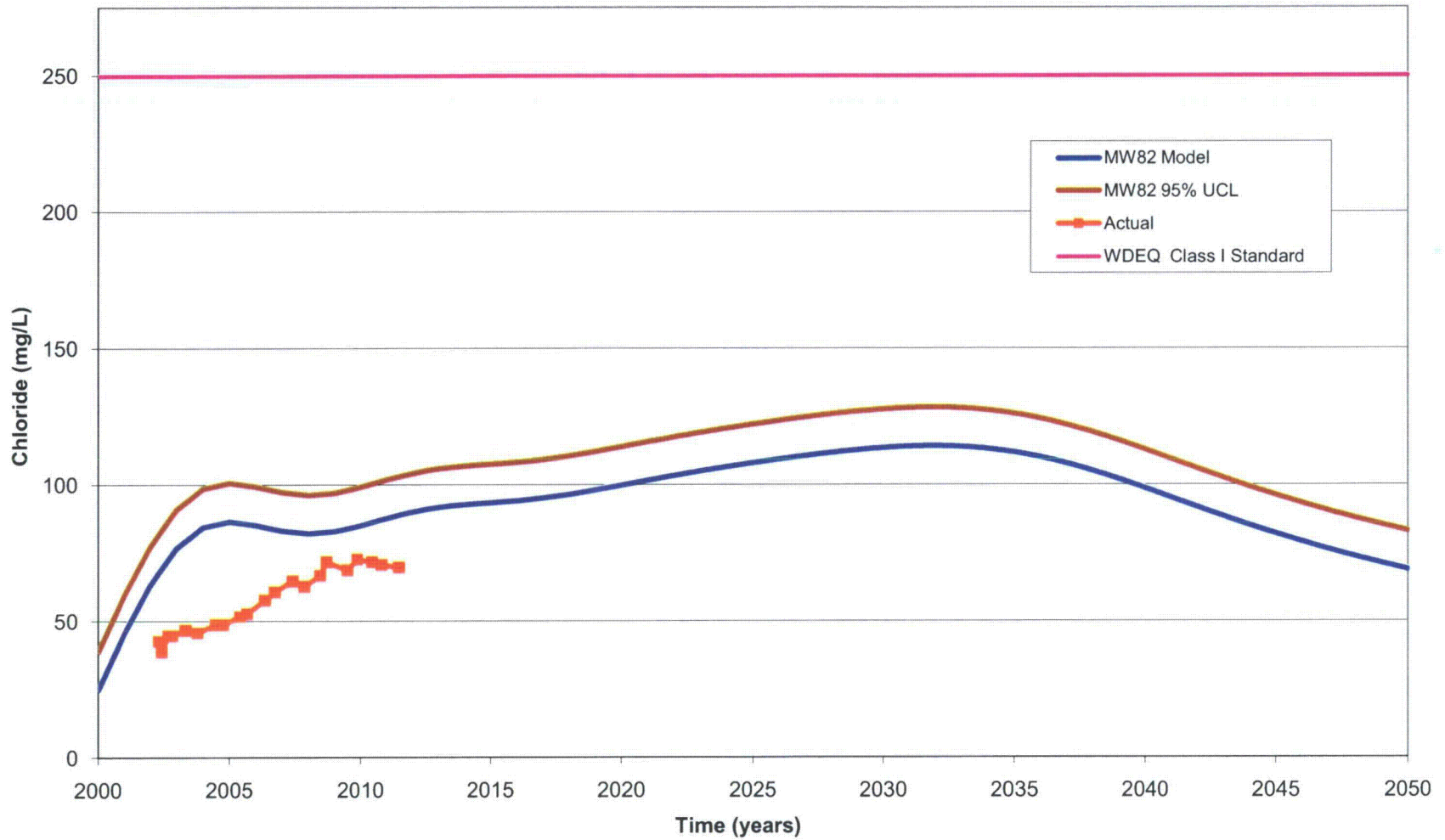


Figure 38 Simulated Sulfate Trends at MW28 (50 Years) Versus Actual Data
Western Flow Regime

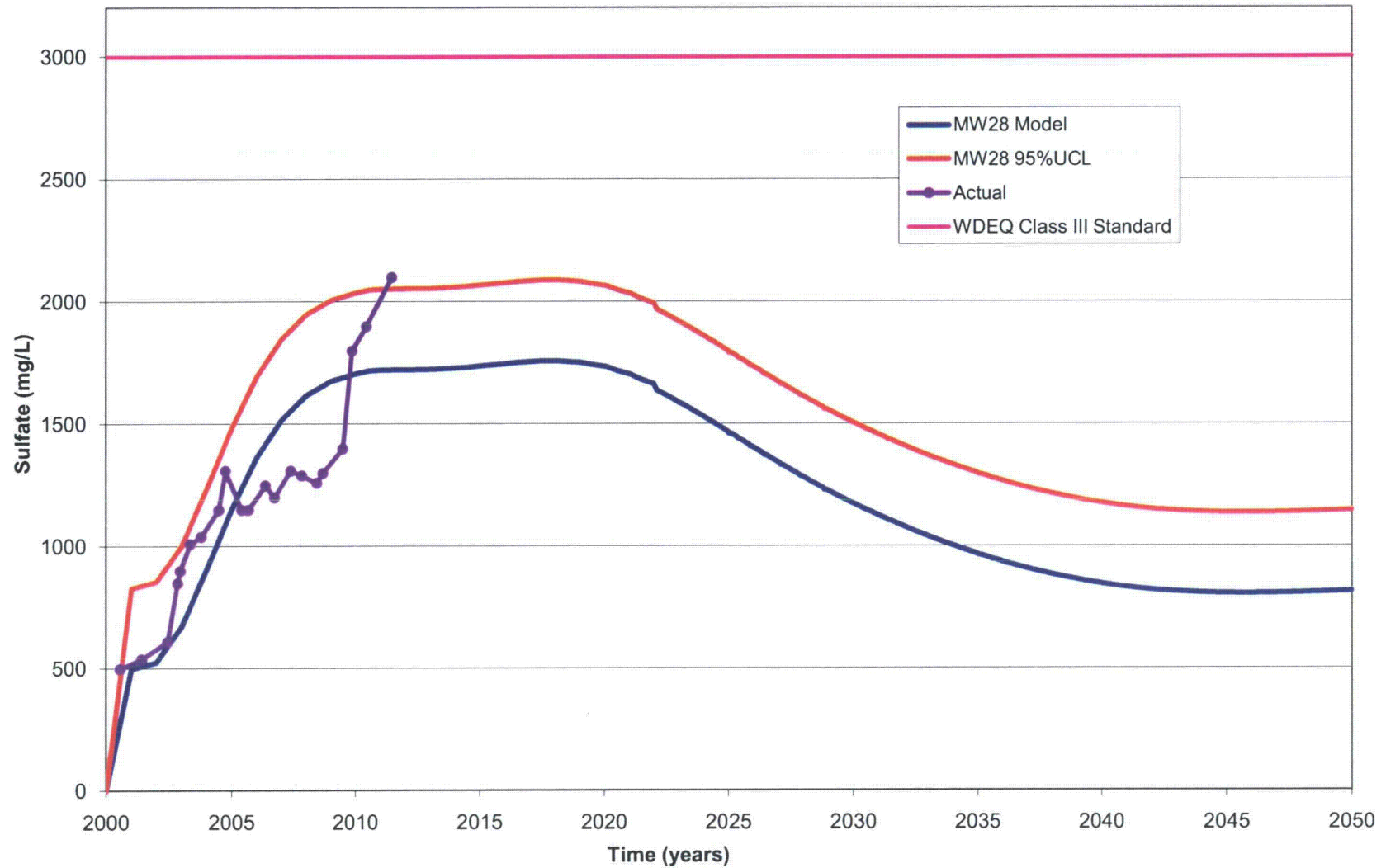


Figure 39 Simulated Sulfate Trends at MW71B (50 Years) Versus Actual Data
Western Flow Regime

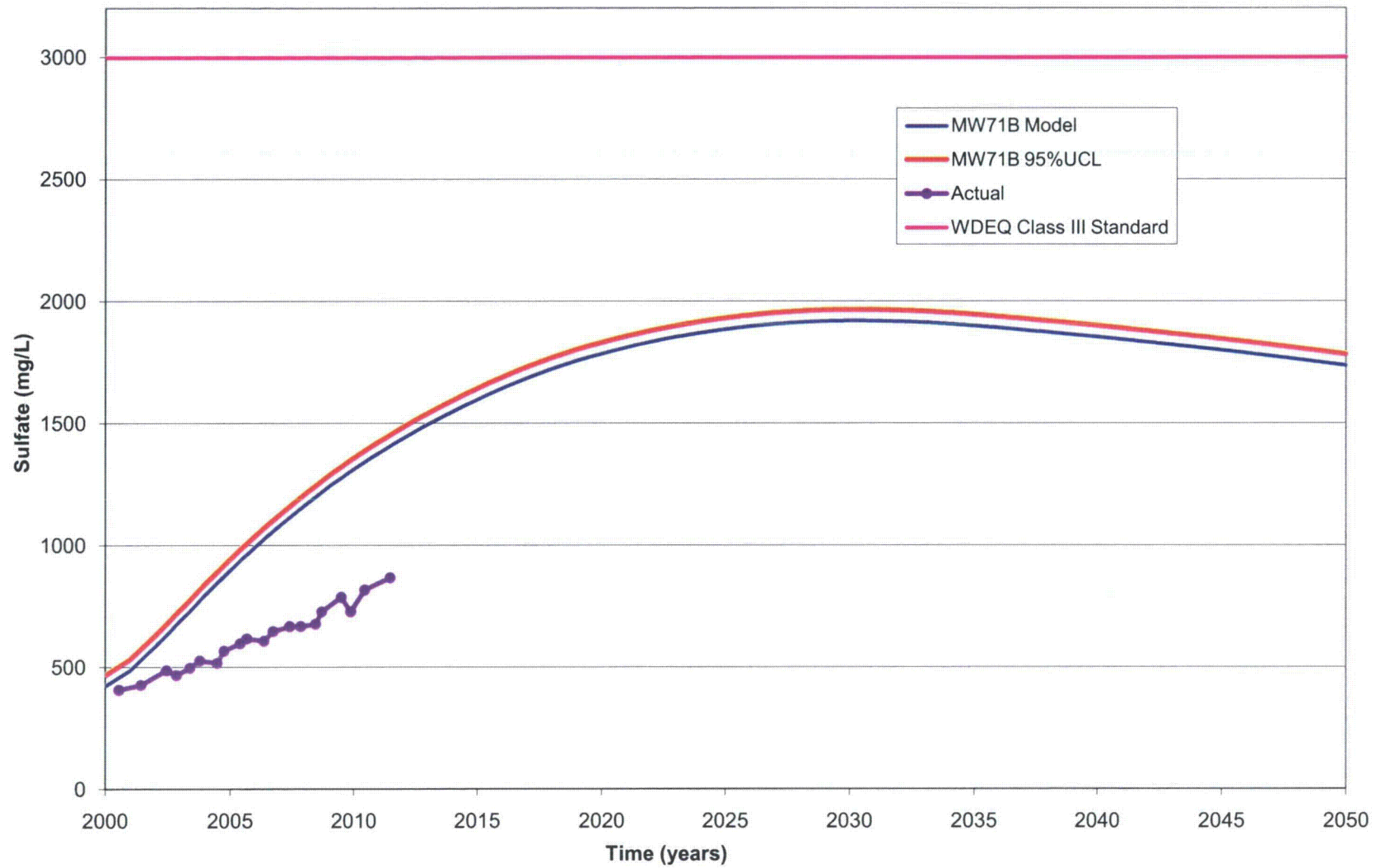
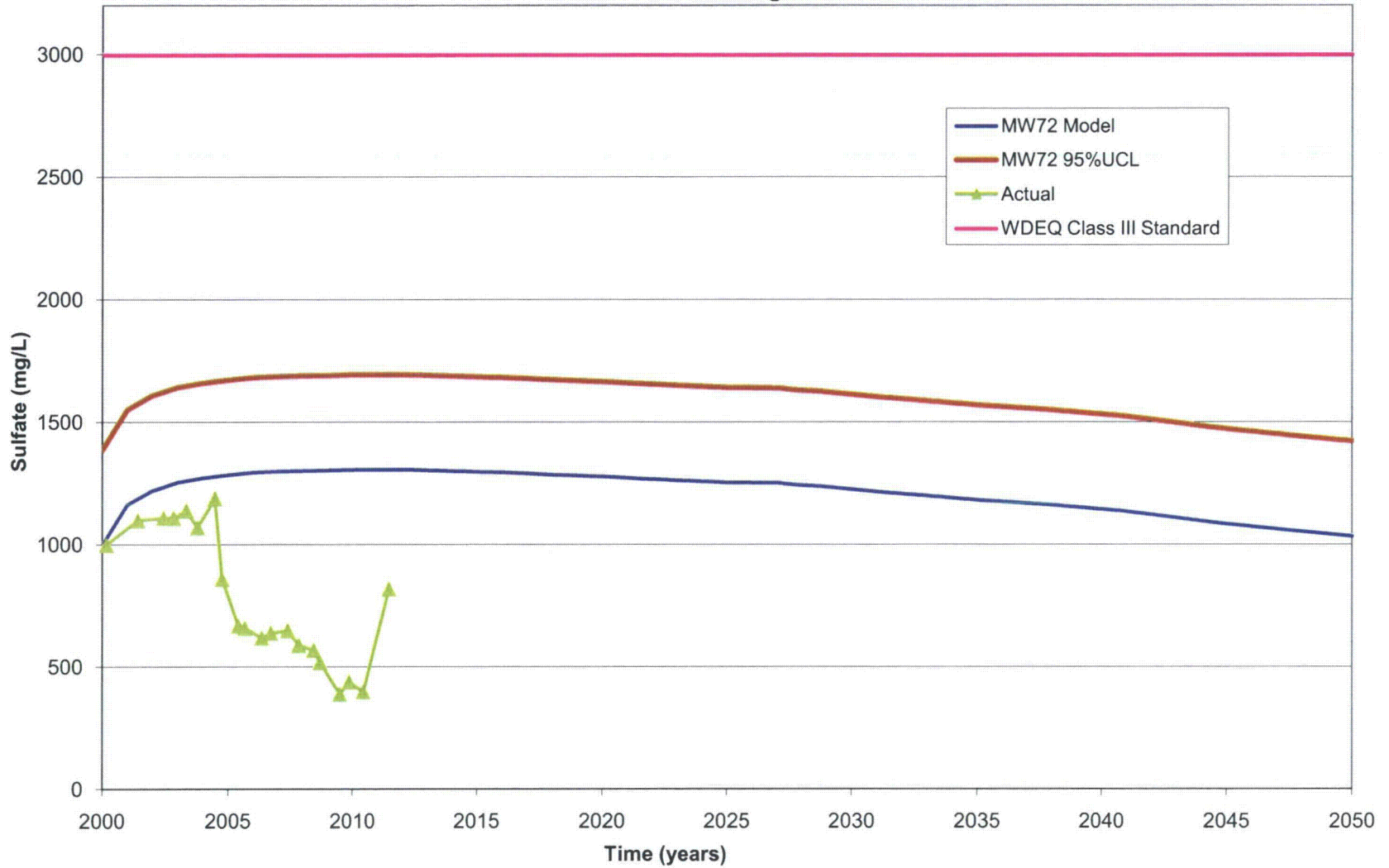
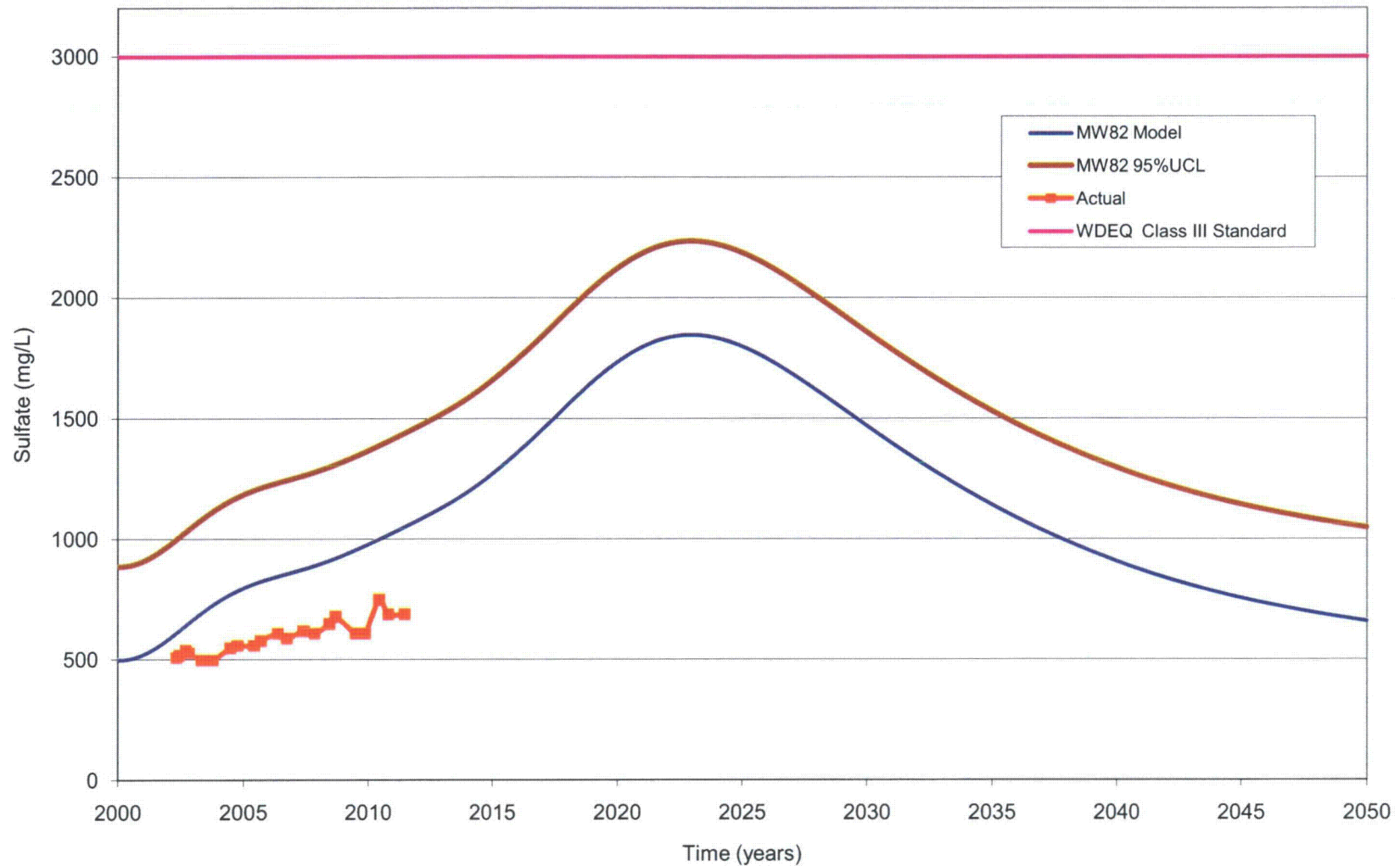


Figure 40 Simulated Sulfate Trends at MW72 (50 Years) Versus Actual Data
Southwestern Flow Regime



**Figure 41 Simulated Sulfate Trends at MW82 (50 Years) Versus Actual Data
Southwestern Flow Regime**



Appendix A Water Rights Within Five-Mile Radius of East Gas Hills Site

Permit Number	Facility Name	Permit Applicant	Tns	Rng	Section	Qtr Qtr	Longitude	Latitude	Status	Uses	Priority	Source	Permit Well Depth	Permit Static Water Depth	Total Flow
P146970.OW	#1	Herbst, Lois G.	034N	088W	8	SW1/4SW1/4	-107.41603	42.92769	Complete	MIS	06/21/2002				
P76997.OW	4WW 1	WyDEQ	033N	090W	26	NW1/4SE1/4	-107.58913	42.80276	Complete	MON	05/23/1988		300.00	206.07	0
P81657.OW	A 8 Pit	Wyo State Dept. of Environmental Quality	033N	089W	22	NE1/4NE1/4	-107.4843	42.82281	Cancelled	MIS	01/11/1990				5000
P87833.OW	A-8 Pit Well		033N	089W	22	NE1/4NE1/4	-107.4843	42.82281	Cancelled	MIS	05/01/1992		219.00	64	80
P105283.OW	A-8 Pit Well	Umetco Minerals Corporation	033N	089W	22	NE1/4NE1/4	-107.4843	42.82281	Cancelled	MIS	03/17/1997		219.00	64	80
P8122.0R	A-9 Pit Subgrade Tailings Disposal Reservoir	Union Carbide Corporation	033N	089W	15	SE1/4SW1/4	-107.494004	42.826559	Cancelled	IND_SW	04/03/1980	Union Draw (drainage of)			1107.73
P8641.0R	A-9 Pit Tailings Disposal Reservoir	Umetco Minerals Corporation	033N	089W	15	SE1/4SW1/4	-107.494004	42.826559	Cancelled	IND_SW; TEM; COMBBU	07/27/1983	Union Draw (drainage of)			966.77
P43745.OW	Adobe #1		033N	089W	9	SW1/4SE1/4	-107.5087	42.84119	Cancelled	IND_GW; MIS	06/09/1978				50
P55701.OW	Adobe #2		033N	089W	9	SW1/4SW1/4	-107.51854	42.84117	Cancelled	MIS	02/28/1979				500
P8208.0R	Adobe Oil & Gas Corporation Evaporation Pond Reservoir		033N	089W	9	NE1/4SE1/4	-107.503791	42.844808	Cancelled	IND_SW; MIS_SW; COMBBU	03/02/1979	East Draw			25.82
P56.OW	Aljob #1	Globe Mining Co.	033N	089W	15	SW1/4NW1/4	-107.49887	42.83387	Abandoned	DOM_GW; IND_GW	08/29/1958		484.00	256	45
P57.OW	Aljob #2	Globe Mining Co.	033N	089W	15	SW1/4NE1/4	-107.4892	42.83374	Cancelled	IND_GW	08/29/1958		537.00	260	45
P104730.OW	Aljob #2	Umetco Minerals Corporation	033N	089W	15	SE1/4NE1/4	-107.48437	42.83367	Incomplete	MIS	11/25/1996		537.00	270	45
P67078.OW	Aljob #2	Union Carbide Corporation	033N	089W	15	SE1/4NE1/4	-107.48437	42.83367	Cancelled	IND_GW; MIS	03/05/1984		537.00	270	45
P58.OW	Aljob #3	Globe Mining Co.	033N	089W	15	SE1/4NW1/4	-107.49404	42.8338	Cancelled	IND_GW	08/29/1958				100
P64404.OW	Allegretti #1		032N	089W	5	NE1/4SE1/4	-107.50881	42.77345	Cancelled	MIS	06/02/1983				20
P9722.0R	Area 4 Reclamation Reservoir	Pathfinder Mines Corporation	033N	090W	36		-107.569661	42.788949	Fully Adjudicated	STO; WIL; COMBBU	12/24/1991	Fraser Draw (Drainage of)			6787.5
CR CR15/374	Area 4 Reclamation Reservoir	Pathfinder Mines Corporation, et al.	033N	090W	All					STO	12/24/1991	Fraser Draw (Drainage of)			6787.5
P87215.OW	Area 5 Reclamation Reservoir	Pathfinder Mines Corporation	033N	090W	26	SE1/4NW1/4	-107.59185	42.80903	Incomplete	MIS	12/24/1991		250.00	95	66
P9723.0R	Area 5 Reclamation Reservoir	Pathfinder Mines Corporation	033N	090W	26		-107.589297	42.80346	Complete	STO; WIL	12/24/1991	Fraser Draw (Drainage of)			3202.22
P53837.OW	Area 6 Mine Sump		033N	090W	13	NE1/4SW1/4	-107.57243	42.83212	Cancelled	IND_GW; MIS	07/07/1980		200.00	120	200
P46522.OW	Area 7 Mine Sump		033N	090W	36	SE1/4NW1/4	-107.57213	42.79071	Cancelled	MIS	09/14/1978		350.00	255	1000
P7964.0R	Area 7 Settling Reservoir	Pathfinder Mines Corporation	033N	090W	25	NE1/4SW1/4	-107.572183	42.801686	Cancelled	IND_SW	09/14/1978	Fraser Draw (Drainage of)			23.25
P49333.OW	Barrel Springs #1	Matador Cattle Company	032N	089W	8	SW1/4SW1/4	-107.52333	42.75531	Complete	STK	08/06/1979		4.00	-4.00	1
P45502.OW	Barrel Springs #1	USDI, Bureau of Land Management	032N	089W	8	NW1/4SW1/4	-107.52335	42.75894	Cancelled	STK	10/20/1978				25
P53366.OW	Bates Springs #1	Matador Cattle Company	033N	089W	8	SW1/4SW1/4	-107.53832	42.84125	Cancelled	STK	08/08/1980				
P71766.OW	Beaver Rim #2		033N	089W	27	NE1/4NE1/4	-107.4842	42.80843	Complete	STK	01/17/1986		10.00	-4.00	15
P7939.0R	Bengal Reservoir		033N	089W	22	SE1/4SE1/4	-107.484222	42.812016	Cancelled	STO; WIL; COMBBU	02/24/1978	Bengal Draw			79.76
P60146.OW	Bengal Well #1		033N	089W	27	NE1/4NE1/4	-107.4842	42.80843	Abandoned	MIS	11/25/1977		-1.00	0	0
P60147.OW	Bengal Well #2		033N	089W	27	NE1/4NE1/4	-107.4842	42.80843	Abandoned	MIS	11/25/1977		-1.00	0	0
P34361.OW	Blackstone #1		033N	089W	32	SW1/4NE1/4	-107.52804	42.79059	Cancelled	MON	07/22/1976				0
CR CR04/129	Brownie Draw Stock Reservoir	Pine Mountain Livestock Co.	034N	088W	1	NW1/4NE1/4	-107.32747	42.9529		STO	08/05/1963				
P5360.0S	Brownie Draw Stock Reservoir	Pine Mountain Livestock Co.	034N	088W	1	NW1/4NE1/4	-107.32747	42.952897	Fully Adjudicated	STO	08/05/1963				
P46771.OW	BS 1051		033N	089W	32	SE1/4NE1/4	-107.52318	42.79056	Cancelled	MIS	01/13/1978				110
P30542.OW	BS 12 1024W		033N	089W	32	SW1/4NE1/4	-107.52804	42.79059	Cancelled	MIS	07/25/1975		751.00	360	0
P103584.OW	BS 96 M-1	Power Resources, Inc.	033N	089W	32	NE1/4NW1/4	-107.53293	42.79425	Complete	MON	08/29/1996		305.00	194.1	0
P31496.OW	BS12-1025P	Federal American Partners	033N	089W	32	SW1/4NE1/4	-107.52804	42.79059	Complete	MON	11/12/1975		777.00	345	0
P31497.OW	BS12-1026P	Federal American Partners	033N	089W	32	SW1/4NE1/4	-107.52804	42.79059	Complete	MON	11/12/1975		640.00	345	0
P31498.OW	BS12-1027P		033N	089W	32	SW1/4NE1/4	-107.52804	42.79059	Complete	MON	11/12/1975		565.00	325	0
P31499.OW	BS12-1028P	Federal American Partners	033N	089W	32	NW1/4SE1/4	-107.52803	42.78696	Complete	MON	11/12/1975		827.00	440	0
P31500.OW	BS12-1029P	Federal American Partners	033N	089W	32	NW1/4SE1/4	-107.52803	42.78696	Complete	MON	11/12/1975		735.00	440	0
P31501.OW	BS12-1030P		033N	089W	32	NW1/4SE1/4	-107.52803	42.78696	Complete	MON	11/12/1975		640.00	435	0
P112331.OW	BSMP-1	Power Resources, Inc.	033N	089W	32	NE1/4NW1/4	-107.53293	42.79425	Complete	MON	10/08/1998		376.00	212	0
P112332.OW	BSMP-2	Power Resources, Inc.	033N	089W	32	NE1/4NW1/4	-107.53293	42.79425	Complete	MON	10/08/1998		410.00	230	0
P112333.OW	BSMP-3	Power Resources, Inc.	033N	089W	32	NE1/4NW1/4	-107.53293	42.79425	Complete	MON	10/08/1998		372.00	221	0
P112330.OW	BSMU-1	Power Resources, Inc.	033N	089W	32	NE1/4NW1/4	-107.53293	42.79425	Complete	MON	10/08/1998		485.00	266.9	0
P13001.0R	B-Spoils Reservoir	Umetco Minerals Corporation	033N	089W	15	NE1/4SE1/4	-107.48435	42.83004	Unadjudicated	IND_SW	08/27/2007	Canyon Creek			
P112329.OW	BSPW-1	Power Resources, Inc.	033N	089W	32	SE1/4NW1/4	-107.53292	42.7906	Complete	MON	10/08/1998		425.00	257.4	0
P16915.0D	Bull Canyon Ditch No. 1	Grieve, Jas B.	034N	088W	17	NW1/4SE1/4	-107.405517	42.916658	Unadjudicated	DOM_SW; RES; STO	12/29/1924				
P16916.0D	Bull Canyon Ditch No. 2	Grieve, Jas B.	034N	088W	16	SW1/4NW1/4	-107.395916	42.920467	Unadjudicated	DOM_SW; RES; STO	12/29/1924				

Appendix A Water Rights Within Five-Mile Radius of East Gas Hills Site

Permit Number	Facility Name	Permit Applicant	Tns	Rng	Section	Qtr Qtr	Longitude	Latitude	Status	Uses	Priority	Source	Permit Well Depth	Permit Static Water Depth	Total Flow
P3976.0R	Bull Canyon Reservoir	Grieve, Jas B.	034N	088W	16	NE1/4NW1/4	-107.39062	42.923178	Unadjudicated	DOM_SW; STO; COMBBU	12/29/1924				
P174546.0W	Burgett #1	Burgett, Glenn H.	034N	089W	31	SE1/4NE1/4	-107.54359	42.87759		STK	05/04/2006				
P46779.0W	Buss 1	Alta Gold Co.	033N	089W	27	NE1/4SW1/4	-107.49386	42.80126	Cancelled	MIS	05/02/1978		350.00	195	50
P7938.0R	Buss Draw Reservoir	Power Resources, Inc.	033N	089W	27	SW1/4SE1/4	-107.488982	42.797663	Cancelled	FLO; TEM; COMBBU	02/24/1978	Buss Draw (A closed Basin)			5.26
P95290.0W	Buss I Reservoir		033N	089W	27	SE1/4NW1/4	-107.49387	42.8049	Incomplete	MIS	04/26/1994		210.00	171	2000
P10039.0R	Buss I Reservoir	Highland Uranium Project Power Resources Inc.	033N	089W	27	SW1/4NW1/4	-107.496324	42.804587	Unadjudicated	STO	03/31/1994	Buss Draw (A closed Basin)			1026
CR UW10/404	Buss I Reservoir	Power Resources Inc., et al.	033N	089W	27	SE1/4NW1/4	-107.49387	42.8049		MIS	04/26/1994				82.6
P10040.0R	Buss III Reservoir	Highland Uranium Project Power Resources Inc.	033N	089W	27	NE1/4SW1/4	-107.49386	42.801259	Unadjudicated	STO	03/31/1994	Buss Draw (A closed Basin)			14.9
P84836.0W	BUSS-1	Power Resources, Inc.	033N	089W	27	NE1/4SW1/4	-107.49386	42.80126	Cancelled	MIS	04/11/1991		350.00	195	50
P74237.0W	Butler 6 23 A	Butler Oil Co. Radarville	034N	088W	6	NW1/4SW1/4	-107.44049	42.94597	Cancelled	MIS	03/12/1987				
CR CC44/698	C. B. C. Ditch	Cunningham, Charles B.	033N	089W	4	SE1/4NW1/4	-107.51384	42.86283		DOM_SW; IRR_SW; STO	08/09/1918	Canyon Creek			0.17
P15179.0D	C. B. C. Ditch	Cunningham, Charles B.	033N	089W	4	SE1/4NW1/4	-107.514057	42.862776	Fully Adjudicated	DOM_SW; IRR_SW; STO	08/09/1918	Canyon Creek			0.17
P104718.0W	C-18 Pit	Umetco Minerals Corporation	033N	089W	22	NE1/4NW1/4	-107.49398	42.82294	Abandoned	MIS	11/21/1996		85.00	80	500
P8599.0S	Canyon Creek #1 Stock Reservoir	Matador Cattle Company	033N	089W	9	NE1/4NE1/4	-107.503814	42.851983	Cancelled	STO	08/06/1979	Canyon Creek			0.13
P10041.0R	Cap Pit Reservoir	Highland Uranium Project Power Resources Inc.	033N	089W	27	NW1/4NE1/4	-107.492552	42.809325	Unadjudicated	STO	03/31/1994	CH. 4 Draw			50.86
P184398.0W	Carol Well # 1	Power Resources, Inc.	033N	089W	28	NE1/4SW1/4	-107.512689	42.803047	Complete	MIS; MIS	01/07/2008		400.00	200	50
P44612.0W	Carol Well #1	Power Resources, Inc.	033N	089W	28	NE1/4SW1/4	-107.51346	42.80136	Incomplete	MIS	11/25/1977		400.00	200	50
P33517.0W	Cayias #1		033N	089W	18	NW1/4SW1/4	-107.55784	42.83044	Cancelled	IND_GW	04/09/1976				0
P33518.0W	Cayias #2		033N	089W	18	SE1/4SW1/4	-107.55294	42.82682	Cancelled	IND_GW	04/09/1976				0
P43111.0W	Cee #1	Union Carbide Corporation	033N	089W	14	SE1/4SW1/4	-107.4745	42.82643	Cancelled	MIS	03/10/1978		130.00	55	500
P46385.0W	Cole #80	Matador Cattle Company	033N	089W	18	SW1/4NW1/4	-107.55787	42.83406	Fully Adjudicated	STK	08/14/1978		2.00	-4.00	0.75
P20990.0D	Cow Camp Ditch	Roberts, Ben	034N	088W	26	NW1/4NE1/4	-107.346116	42.895028	Unadjudicated	IRR_SW	03/24/1952				
P20991.0D	Cow Camp Ditch	Roberts, Ben	034N	088W	26	NW1/4NE1/4	-107.346133	42.895017	Unadjudicated	IRR_SW	03/24/1952				
P5938.0R	Cow Camp Reservoir	Roberts, Ben	034N	088W	26	NW1/4NE1/4	-107.346889	42.895667	Unadjudicated	IRR_SW; STO; COMBBU	03/24/1952				
P10166.0D	Crane Ditch	Holliday, J. J.	033N	088W	7	NW1/4SE1/4	-107.426916	42.844742	Cancelled	IRR_SW	09/26/1910	Deer Creek			0.36
CR CC77/025	Cross Ell Ditch	Andrus, Vincent D.	033N	089W	1	SE1/4SE1/4	-107.44487	42.85542		IRR_SW	10/11/1909	Deer Creek			0.98
P9431.0D	Cross Ell Ditch	Clayton, Leonidas	033N	088W	7				Fully Adjudicated	IRR_SW	10/11/1909	Deer Creek			1.21
P2846.0E	Cross Ell Ditch (9431 Permit) (Enl. of)	Grieve, James B.	033N	089W	1	SE1/4SE1/4			Cancelled	DOM_SW; IRR_SW; STO	09/20/1913				
P4483.0E	Cross Ell Ditch, Enlargement No. 3 of the	Diamond Ring Co.	033N	088W	All				Fully Adjudicated	IRR_SW	03/18/1926				0.19
P71755.0W	Cross L #2 Spring	Clear Creek Cattle Co.	033N	088W	7	NW1/4NE1/4	-107.4254	42.85182	Fully Adjudicated	DOM_GW; STK	09/13/1984		3.00	-4.00	5
P182674.0W	Cross Meadows 12-1		033N	089W	12	SW1/4SW1/4	-107.45986	42.84099		STK	07/09/2007				25
P10858.0D	Dew Drop Ditch	Diamond Ring Co.	033N	089W	7	SE1/4NE1/4	-107.543331	42.848502	Cancelled	IRR_SW; STO	07/17/1911	Dew Drop Spring			0.07
P16965.0D	Diamond Ring Ditch No. 1	Grieve, Nellie B.	034N	088W	27	SW1/4NE1/4	-107.365671	42.891263	Cancelled	IRR_SW	09/11/1916				
P16966.0D	Diamond Ring Ditch No. 2	Grieve, Nellie B.	034N	088W	27	SW1/4SE1/4	-107.36505	42.883992	Cancelled	IRR_SW	09/11/1916				
CR CC77/041	Diamond Ring Ditch No. 5	Clear Creek Cattle Co. (lessee)	033N	089W	1	SE1/4NE1/4	-107.44482	42.8626		IRR_SW	03/18/1926	Deer Creek			0.21
P17093.0D	Diamond Ring Ditch No. 5	Diamond Ring Co.	033N	089W	1	SE1/4NE1/4	-107.44618	42.862626	Fully Adjudicated	IRR_SW	03/18/1926	Deer Creek			0.21
P17094.0D	Diamond Ring Ditch No. 6	Diamond Ring Co.	033N	088W	7		-107.420475	42.851833	Cancelled	IRR_SW	03/18/1926	Deer Creek			0.66
P3986.0R	Diamond Ring Reservoir No. 1	Grieve, Nellie B.	034N	088W	26	NW1/4NW1/4			Cancelled	IRR_SW	09/11/1916				
P3987.0R	Diamond Ring Reservoir No. 2	Grieve, Nellie B.	034N	088W	26	NW1/4NE1/4			Cancelled	IRR_SW	09/11/1916				
P31718.0D	Drill Water Haul	Power Resources, Inc.	033N	089W	22	NW1/4SW1/4	-107.498783	42.815781	Cancelled	DRI; IND_SW; TEM	03/27/1997	Veca Draw			1.5
P31719.0D	Drill Water Haul No. 2	Power Resources, Inc.	033N	089W	21	NW1/4NW1/4	-107.518457	42.823086	Cancelled	DRI; IND_SW; TEM	03/27/1997	PC Pit Draw			1.5
P14468.0D	Dulton Pipe Line No. 1 Ditch	Wood, Ben M. & B.B.	033N	090W	2	NW1/4SW1/4	-107.59718	42.859582	Cancelled	DOM_SW; DRI; MIN; STO	10/16/1916	Spring			
P3369.0R	Dutton Reservoir	Wood, Ben M.	033N	090W	2	SW1/4SE1/4	-107.587235	42.85591	Cancelled	DOM_SW; DRI; STO; COMBBU	10/16/1916	Spring			0.86
P67178.0W	DW2	USDI, BLM** Umetco Minerals Corporation	033N	089W	15	SE1/4SW1/4	-107.494	42.82656		MON	04/23/1984		260.00	140	0
P67179.0W	DW3	USDI, BLM** Umetco Minerals Corporation	033N	089W	15	SW1/4NW1/4	-107.49887	42.83387		MON	04/23/1984		228.00	210	0
P88601.0W	DW-4	Umetco Minerals Corporation	033N	089W	15	SE1/4SW1/4	-107.494	42.82656	Cancelled	MON	06/18/1992				0
P89541.0W	DW-4	Umetco Minerals Corporation	033N	089W	15	SE1/4SW1/4	-107.494	42.82656	Abandoned	MIS	09/03/1992		260.00	135	8
P126818.0W	East Brownie #1	MacKenzie Cattle	034N	088W	6	NW1/4NW1/4	-107.44061	42.95338	Cancelled	STK	07/12/2000				
P10077.0S	East Stock Reservoir		033N	089W	14	NE1/4NE1/4	-107.464742	42.837361	Cancelled	STO	01/27/1987	East Rim Draw			17.65
P31919.0W	ENL BS12-1024W	Federal American Partners	033N	089W	32	SW1/4NE1/4	-107.52804	42.79059	Cancelled	MIS	11/19/1975		751.00	360	0

Appendix A Water Rights Within Five-Mile Radius of East Gas Hills Site

Permit Number	Facility Name	Permit Applicant	Tns	Rng	Section	Qtr Qtr	Longitude	Latitude	Status	Uses	Priority	Source	Permit Well Depth	Permit Static Water Depth	Total Flow
P85776.OW	ENL MWC-42	Umetco Minerals Corporation	033N	089W	10	NE1/4SW1/4	-107.49402	42.84469		MIS	07/24/1991		240.00	180.58	8
P32404.OW	ENL UPZ #1		033N	089W	33	SW1/4NW1/4	-107.5183	42.79054	Cancelled	MIS	01/26/1976		925.00	470	-1.00
P85633.OW	ENL Waterworks Well		034N	088W	26	NW1/4NE1/4	-107.34659	42.89538	Incomplete	MIS	06/20/1991				
P67175.OW	EPW1	USDI, BLM** Umetco Minerals Corporation	033N	089W	16	SE1/4SE1/4	-107.50372	42.82667		MON	04/23/1984		155.00	110	0
P67176.OW	EPW2	USDI, BLM** Umetco Minerals Corporation	033N	089W	22	NW1/4NW1/4	-107.49882	42.82301		MON	04/23/1984		115.00	89	0
P67177.OW	EPW3	USDI, BLM** Umetco Minerals Corporation	033N	089W	22	NW1/4NW1/4	-107.49882	42.82301		MON	04/23/1984		110.00	70	0
P24154.OP	Ervey Basin #12-1		034N	088W	21	SE1/4NE1/4	-107.38109	42.90612	Complete	STK	08/13/1973				
P24155.OP	Ervey Basin #12-2		034N	088W	28	NE1/4SE1/4	-107.38105	42.88816	Complete	STK	08/13/1973				
P24150.OP	Ervey Basin #12-4		034N	088W	8	SW1/4NW1/4	-107.41579	42.93493	Complete	STK	08/13/1973				
P191436.OW	Ervey Basin No. 3	Herbst Lazy Ty Ranch, LLP	034N	088W	19	NE1/4NW1/4	-107.430811	42.907111	Complete	STK	09/11/2009				
P1209.OD	Ervey Nos. 1 & 2	Ervey, Mrs. M. E.	033N	088W	7	NW1/4NW1/4	-107.440001	42.852145	Cancelled	IRR_SW	05/11/1896	Deer Creek			1.78
P179593.OW	Gas Hills Water Well-1	Power Resources Inc.	033N	089W	32	SE1/4NW1/4	-107.53292	42.7906		MIS	02/14/2007				80
P108233.OW	GH97WW-1	Power Resources, Inc.	033N	089W	32	SE1/4NW1/4	-107.53292	42.7906	Cancelled	MIS	11/17/1997		1325.00	425	100
P10444.OR	GHP NO. 2 Evaporation Reservoir	Umetco Minerals Corporation	033N	089W	15	NE1/4NW1/4	-107.491914	42.837189	Cancelled	IND_SW	11/21/1996	Canyon Creek			199.36
P71764.OW	Government #1 West (Rattlesnake)		033N	088W	6	SE1/4SE1/4	-107.42041	42.85546	Fully Adjudicated	STK	10/09/1984		5.00	-4.00	4
P66157.OW	Guard Well 3A	Union Carbide Corporation	033N	089W	15	SE1/4SW1/4	-107.494	42.82656	Abandoned	MON	04/01/1983		158.00	101	10
P67075.OW	Guard Well 3B	USDI, BLM** Union Carbide Corporation	033N	089W	15	SE1/4SW1/4	-107.494	42.82656		IND_GW; MIS	02/16/1984		159.00	114.1	7
P67076.OW	Guard Well 3C	USDI, BLM** Union Carbide Corporation	033N	089W	15	SE1/4SW1/4	-107.494	42.82656		IND_GW; MIS	02/16/1984		159.00	105	10
P68153.OW	Guard Well 3D	Umetco Minerals Corporation	033N	089W	15	SE1/4SW1/4	-107.494	42.82656	Cancelled	MIS	08/10/1984		160.00	110	10
P175221.OW	Gunnel #1	BRS Inc.	033N	090W	25	NE1/4NW1/4	-107.57221	42.80875		MIS	06/26/2006		1495.00	108	350
P84835.OW	Gunnel #1	Silver King Mines, Inc.	033N	090W	25	NE1/4NW1/4	-107.57221	42.80875	Cancelled	MIS	04/11/1991		1495.00	108	350
P44400.OW	Gunnell #1	Alta Gold Co.	033N	090W	25	NW1/4NW1/4	-107.57708	42.80892	Cancelled	MIS	07/25/1978		1495.00	108	350
P67160.OW	GW1	Union Carbide Corporation	033N	089W	15	SE1/4SW1/4	-107.494	42.82656		MON	04/23/1984		160.00	105	0
P67161.OW	GW2	Union Carbide Corporation	033N	089W	15	SE1/4SW1/4	-107.494	42.82656		MON	04/23/1984		158.00	114	0
P67162.OW	GW3	Union Carbide Corporation	033N	089W	15	SE1/4SW1/4	-107.494	42.82656		MON	04/23/1984		160.00	107	0
P67163.OW	GW4	USDI, BLM** Umetco Minerals Corporation	033N	089W	22	NE1/4NW1/4	-107.49398	42.82294		MON	04/23/1984		165.00	112.42	0
P67164.OW	GW5	USDI, BLM** Umetco Minerals Corporation	033N	089W	15	SW1/4SE1/4	-107.48916	42.82649		MON	04/23/1984		160.00	100	0
P67165.OW	GW6	USDI, BLM** Umetco Minerals Corporation	033N	089W	22	NW1/4NE1/4	-107.48914	42.82288		MON	04/23/1984		121.00	86.18	0
P67166.OW	GW7	USDI, BLM** Umetco Minerals Corporation	033N	089W	15	SE1/4SW1/4	-107.494	42.82656	Complete	MON	04/23/1984		190.00	0.3	0
P67167.OW	GW8	USDI, BLM** Umetco Minerals Corporation	033N	089W	22	NE1/4NW1/4	-107.49398	42.82294	Complete	MON	04/23/1984		172.00	125	0
P67077.OW	HDW-1	Union Carbide Corporation	033N	089W	15	NE1/4NE1/4	-107.48439	42.83729	Cancelled	IND_GW; MIS	02/08/1984		35.00	-4.00	1
P168630.OW	Herbst Ervey - 2	Herbst, Lois G.	034N	088W	21	NE1/4NW1/4	-107.39097	42.90967		TST	07/01/2005				
P104378.OW	Herbst Ervey Basin #4		034N	088W	21	NW1/4SE1/4	-107.38601	42.9025	Cancelled	STK	10/28/1996				
P96884.OW	Herbst Ervey Basin #1		034N	089W	23	SW1/4SW1/4	-107.47959	42.89906	Complete	STK	08/25/1994				
P98996.OW	Herbst Ervey Basin #2		034N	089W	23	NE1/4SW1/4	-107.47464	42.90264	Complete	STK	04/20/1995				
P100214.OW	Herbst Ervey Basin #3		034N	089W	25	NW1/4NW1/4	-107.45981	42.89527	Cancelled	STK	09/01/1995				
P103667.OW	Herbst Ervey Basin #4		034N	088W	21	NW1/4SE1/4	-107.38601	42.9025	Cancelled	STK	09/04/1996				
P46384.OW	Holiday #1	Matador Cattle Company	033N	088W	19	SW1/4SW1/4	-107.43523	42.81368	Fully Adjudicated	STK	08/14/1978		5.00	-4.00	10.5
CR CC33/360	Holliday Ditch	Holliday, John J.	033N	088W	7	SE1/4NE1/4	-107.42061	42.84815		IRR_SW	08/27/1896	Deer Creek			0.5
P1314.OD	Holliday Ditch	Holliday, John J.	033N	088W	7	SE1/4NE1/4	-107.420606	42.848146	Fully Adjudicated	DOM_SW; IRR_SW; STO	08/27/1896	Deer Creek			0.57
P67183.OW	HW1	USDI, BLM** Umetco Minerals Corporation	033N	089W	15	SW1/4SW1/4	-107.49884	42.82663		MON	04/23/1984		267.60	152.35	0
P67184.OW	HW2	USDI, BLM** Umetco Minerals Corporation	033N	089W	16	NE1/4SE1/4	-107.50373	42.83028		MON	04/23/1984		117.00	104.72	0
P67185.OW	HW3	USDI, BLM** Umetco Minerals Corporation	033N	089W	15	SW1/4NW1/4	-107.49887	42.83387		MON	04/23/1984		135.50	113.34	0
P67186.OW	HW4	USDI, BLM** Umetco Minerals Corporation	033N	089W	15	SW1/4NW1/4	-107.49887	42.83387		MON	04/23/1984		155.40	123.85	0
P133012.OW	HW4AEX	Umetco Minerals Corporation	033N	089W	15	SW1/4NW1/4	-107.49887	42.83387	Cancelled	MIS	03/12/2001				0
P130987.OW	HW4EX	Umetco Minerals Corporation	033N	089W	15	SW1/4NW1/4	-107.49887	42.83387	Incomplete	MIS	11/28/2000				0
P14783.OD	Inghram Ditch	Inghram, Mary	034N	089W	21	NE1/4SE1/4	-107.503338	42.902665	Cancelled	DOM_SW; IRR_SW; STO	09/17/1917				
P46389.OW	Iron Spring #1	Matador Cattle Company	033N	089W	8	SE1/4SW1/4	-107.53338	42.84123	Fully Adjudicated	STK	08/14/1978		3.00	-4.00	3
P10859.OD	Iron Spring Ditch	Diamond Ring Co.	033N	089W	8	SE1/4SW1/4	-107.533378	42.84123	Cancelled	IRR_SW; STO	07/17/1911	Iron Spring			0.28
P530.OG	Jay #1	Vitro Minerals Corporation	033N	090W	26	SW1/4NE1/4	-107.58642	42.80536	Incomplete	IND_GW	01/29/1957		206.00	80	100

Appendix A Water Rights Within Five-Mile Radius of East Gas Hills Site

Permit Number	Facility Name	Permit Applicant	Tns	Rng	Section	Qtr Qtr	Longitude	Latitude	Status	Uses	Priority	Source	Permit Well Depth	Permit Static Water Depth	Total Flow
P24172.OP	JE Ranch #12-5		034N	088W	32	NE1/4NW1/4	-107.41077	42.88075	Complete	DOM_GW; STK	08/13/1973				
P76996.OW	JGW 1		033N	090W	26	SE1/4NE1/4	-107.58195	42.80542	Complete	MON	05/23/1988		300.00	136.9	0
P76998.OW	JGW 3		033N	090W	26	SW1/4SE1/4	-107.58682	42.79933	Complete	MON	05/23/1988		200.00	175.75	0
P80484.OW	LA 1	Lidstone & Anderson Inc.	033N	089W	14	SW1/4NW1/4	-107.4795	42.83365	Complete	MON	08/14/1989		60.00	43	0
P80485.OW	LA 2	Lidstone & Anderson Inc.	033N	089W	14	SW1/4SW1/4	-107.47943	42.8264	Complete	MON	08/14/1989		165.00	128.5	0
P80486.OW	LA 3	Lidstone & Anderson Inc.	033N	089W	15	SE1/4SE1/4	-107.48433	42.82642	Complete	MON	08/14/1989		195.00	183	0
P80487.OW	LA 4	Lidstone & Anderson Inc.	033N	089W	14	SW1/4SW1/4	-107.47943	42.8264	Complete	MON	08/14/1989		184.50	145	0
P80488.OW	LA 5	Lidstone & Anderson Inc.	033N	089W	22	NW1/4NE1/4	-107.48914	42.82288	Complete	MON	08/14/1989		128.00	115	0
P80489.OW	LA 6	Lidstone & Anderson Inc.	033N	089W	22	NE1/4NE1/4	-107.4843	42.82281	Complete	MON	08/14/1989				0
P80490.OW	LA 7	Lidstone & Anderson Inc.	033N	089W	23	NW1/4NW1/4	-107.47941	42.82279	Complete	MON	08/14/1989		105.00	71.5	0
P93567.OW	LA-8	Lidstone & Anderson Inc.	033N	089W	22	NE1/4NE1/4	-107.4843	42.82281	Complete	MON	12/10/1993		163.00	72.9	0
P7951.OR	Lagoon 1 Reservoir	Pathfinder Mines Corporation	033N	090W	23	NW1/4SE1/4	-107.587073	42.816296	Cancelled	IND_SW	05/17/1978	Fraser Draw (Drainage of)			6.6
P7952.OR	Lagoon 2 Reservoir	Pathfinder Mines Corporation	033N	090W	23	NW1/4SE1/4	-107.587073	42.816296	Cancelled	IND_SW	05/17/1978	Fraser Draw (Drainage of)			0.22
P169586.OW	Liam	Burgett, Glenn H.	034N	090W	36	NE1/4NE1/4	-107.5631	42.88126		STK	08/25/2005				
P13527.0S	Lilly Pad Stock Reservoir	USDI, Bureau of Land Management	034N	089W	19	NW1/4SW1/4	-107.548776	42.906612	Fully Adjudicated	STO	11/01/1982				
P13528.0S	Lilly Pad Stock Reservoir	USDI, Bureau of Land Management	034N	089W	29	NE1/4SW1/4	-107.533792	42.888447	Fully Adjudicated	STO	11/01/1982				
P49121.OW	Lincoln Springs #1	Matador Cattle Company	033N	089W	7	SE1/4NE1/4	-107.54333	42.8485	Fully Adjudicated	STK	07/11/1979		5.00	-4.00	3
P71757.OW	Little Cross L #1 Spring	Clear Creek Cattle Co.	033N	088W	6	NW1/4SW1/4	-107.44005	42.85899	Fully Adjudicated	STK	09/13/1984		4.00	-4.00	10
P46387.OW	Little X-L #1	Matador Cattle Company	033N	088W	6	NW1/4SW1/4	-107.44005	42.85899	Fully Adjudicated	STK	08/14/1978		2.00	-4.00	3
P183419.OW	Lucky Mc #12	Barnhart Drilling Company, Inc.	033N	090W	24	SE1/4NW1/4	-107.574444	42.820833	Complete	MIS	09/13/2007		1451.00	64	500
P103983.OW	Lucky Mc #12	Barnhart Drilling Company, Inc.	033N	090W	24	SE1/4NW1/4	-107.57231	42.81973	Incomplete	MIS	09/17/1996		1451.00	64	310
P103982.OW	Lucky Mc #14	Barnhart Drilling Company, Inc.	033N	090W	24	SW1/4NE1/4	-107.56745	42.81967	Incomplete	MIS	09/17/1996		1505.00	70	400
P43159.OW	Lucky Mc #14	Pathfinder Mines Corporation	033N	090W	24	NE1/4SW1/4	-107.57228	42.81606	Cancelled	IND_GW	03/31/1978		1505.00	70	500
P501.0G	Lucky Mc #3	Pathfinder Mines Corporation	033N	090W	26	SW1/4NW1/4	-107.59754	42.80675	Incomplete	DOM_GW; IND_GW	12/03/1956		218.00	95	300
P682.0G	Lucky Mc #5	Pathfinder Mines Corporation	033N	090W	23	NE1/4SW1/4	-107.59184	42.81735	Incomplete	DOM_GW; IND_GW	07/02/1957		995.00	100	200
P716.0G	Lucky Mc #6	Pathfinder Mines Corporation	033N	090W	23	SW1/4NW1/4	-107.59708	42.82084	Incomplete	DOM_GW; IND_GW	11/21/1957		1340.00	53	350
P3.0W	Lucky Mc #8	Pathfinder Mines Corporation	033N	090W	All				Fully Adjudicated	IND_GW	03/14/1958		1500.00	392	80
CR UW10/187	Lucky Mc #8	Wyo Board of Land Commissioners	033N	090W	All					IND_GW	03/14/1958				80
P216.0W	Lucky Mc #9	Utah Construction & Mining Co.	033N	090W	24	SE1/4NW1/4	-107.57231	42.81973	Cancelled	IND_GW	08/26/1959		1362.00	26.1	600
P438.0G	Lucky Mc 1	Pathfinder Mines Corporation	033N	090W	23	NW1/4SE1/4	-107.58513	42.81701	Complete	DOM_GW	05/01/1956		90.00	30	10
P439.0G	Lucky Mc 2	Pathfinder Mines Corporation	033N	090W	26	NE1/4NW1/4	-107.59338	42.81025	Complete	DOM_GW	05/01/1956		110.00	20	350
P30735.OW	Lucky Mc Well #12		033N	090W	24	SE1/4NW1/4	-107.57231	42.81973	Cancelled	IND_GW	08/08/1975		1451.00	64	310
P182956.OW	Lucky Mc14	Barnhart Drilling Company, Inc.	033N	090W	24	NE1/4SW1/4	-107.572281	42.816061	Complete	MIS	08/15/2007		1505.00	50	500
P9701.0S	Maverick Stock Reservoir		034N	088W	6		-107.440433	42.942302	Unadjudicated	STO	05/06/1985				
P71758.OW	McKenzie Spring	Clear Creek Cattle Co.	033N	088W	19	SW1/4SW1/4	-107.43523	42.81368	Fully Adjudicated	STK	09/13/1984		5.00	-4.00	20
P24173.OP	McRae Gap #13-1		034N	088W	26	NW1/4NE1/4	-107.34659	42.89538	Complete	STK	08/13/1973				
P10860.0D	Medicine Spring Ditch	Diamond Ring Co.	033N	089W	7	NW1/4NW1/4	-107.558043	42.852143	Cancelled	IRR_SW; STO	07/17/1911	Medicine Spring			0.06
P46388.OW	Medicine Springs #1	Matador Cattle Company	033N	089W	7	NW1/4NW1/4	-107.55804	42.85214	Fully Adjudicated	STK	08/14/1978		6.00	-4.00	4
P2575.0D	Merriam Ditch	Merriam, Frank A.	033N	089W	8	SW1/4NW1/4	-107.538414	42.848486	Cancelled	IRR_SW	03/30/1900	Iron Spring			0.11
P45371.0W	Monitor Well GW 10	Power Resources, Inc.	033N	089W	21	SE1/4SE1/4	-107.50368	42.81217		MON	09/26/1978		475.00	153	0
P45368.0W	Monitor Well GW 7	Power Resources, Inc.	033N	089W	27	NE1/4SE1/4	-107.48416	42.80125	Complete	MON	09/26/1978		660.00	82	0
P45369.0W	Monitor Well GW 8	Silver King Mines, Inc.	033N	089W	27	NE1/4NE1/4	-107.4842	42.80843	Complete	MON	09/26/1978		360.00	98	0
P45370.0W	Monitor Well GW 9	Silver King Mines, Inc.	033N	089W	28	NE1/4SE1/4	-107.50366	42.80128	Complete	MON	09/26/1978		325.00	111	0
P103588.0W	MU 96 M-1	Power Resources, Inc.	033N	089W	31	NE1/4SW1/4	-107.55259	42.78704	Complete	MON	08/29/1996		465.00	244.5	0
P103587.0W	MU 96 M-2	Power Resources, Inc.	033N	089W	31	NE1/4SW1/4	-107.55259	42.78704	Complete	MON	08/29/1996		475.00	256.7	0
P107839.0W	MUMP 97-1	Power Resources, Inc.	033N	089W	31	NE1/4SE1/4	-107.54272	42.78699	Complete	MON	10/06/1997		440.00	237	0
P82825.0W	Muskrat MP	Power Resources, Inc.	033N	089W	31	NW1/4SE1/4	-107.54764	42.78701	Complete	MON	06/28/1990		453.00	249	0
P46776.0W	Muskrat P 1	Silver King Mines, Inc.	033N	089W	31	NW1/4SE1/4	-107.54764	42.78701	Complete	MON	02/22/1978		440.00	201	0
P46775.0W	Muskrat P 2	Silver King Mines, Inc.	033N	089W	31	SW1/4SE1/4	-107.54763	42.7834	Complete	MON	02/22/1978		530.00	134	0
P46773.0W	Muskrat P 3	Silver King Mines, Inc.	033N	089W	31	SE1/4SW1/4	-107.55263	42.78344	Complete	MON	02/22/1978		515.00	194	0

Appendix A Water Rights Within Five-Mile Radius of East Gas Hills Site

Permit Number	Facility Name	Permit Applicant	Tns	Rng	Section	Qtr Qtr	Longitude	Latitude	Status	Uses	Priority	Source	Permit Well Depth	Permit Static Water Depth	Total Flow
P46774.0W	Muskrat P 4	Silver King Mines, Inc.	033N	089W	31	NE1/4SW1/4	-107.55259	42.78704	Complete	MON	02/22/1978		530.00	244	0
P82824.0W	Muskrat Pump	Power Resources, Inc.	033N	089W	31	NW1/4SE1/4	-107.54764	42.78701	Complete	MON	06/28/1990		455.00	266	0
P46772.0W	Muskrat Well #1		033N	089W	31	SE1/4SW1/4	-107.55263	42.78344	Cancelled	MIS	02/22/1978				120
P82823.0W	Muskrat-MO	Power Resources, Inc.	033N	089W	31	NE1/4SW1/4	-107.55259	42.78704	Complete	MON	06/28/1990		381.00	198	0
P75424.0W	MW 24	Umetco Minerals Corporation	033N	089W	15	SE1/4SW1/4	-107.494	42.82656	Cancelled	MIS	08/20/1987		156.00	120	5.2
P77793.0W	MW 28	Umetco Minerals Corporation	033N	089W	9	SE1/4SE1/4	-107.50378	42.84119	Complete	MON	08/03/1988		282.00	178.4	0
P80432.0W	MW 29	Umetco Minerals Corporation	033N	089W	15	NE1/4SW1/4	-107.49402	42.83018		MON	08/04/1989		195.00	188	0
P80433.0W	MW 31	Umetco Minerals Corporation	033N	089W	15	NE1/4SW1/4	-107.49402	42.83018		MON	08/04/1989		180.00	130.77	3
P80434.0W	MW 32	Umetco Minerals Corporation	033N	089W	15	SE1/4SW1/4	-107.494	42.82656		MON	08/04/1989		160.00	102	0
P105492.0W	MW 70A	Umetco Minerals Corporation	033N	089W	10	SW1/4SW1/4	-107.49889	42.84115	Complete	MON	04/11/1997		151.00	141	0
P105493.0W	MW 70B	Umetco Minerals Corporation	033N	089W	10	SW1/4SW1/4	-107.49889	42.84115		MON	04/11/1997		265.00	138	0
P105494.0W	MW 71A	Umetco Minerals Corporation	033N	089W	16	NE1/4NE1/4	-107.50376	42.83756		MON	04/11/1997		237.00	224	0
P105495.0W	MW 71B	Umetco Minerals Corporation	033N	089W	16	NE1/4NE1/4	-107.50376	42.83756	Complete	MON	04/11/1997		329.00	223	0
P105496.0W	MW 72	Umetco Minerals Corporation	033N	089W	22	NW1/4NW1/4	-107.49882	42.82301	Complete	MON	04/11/1997		85.00	56	0
P105497.0W	MW 73	Umetco Minerals Corporation	033N	089W	22	NE1/4NW1/4	-107.49398	42.82294		MON	04/11/1997		153.00	104	0
P105498.0W	MW 74	Umetco Minerals Corporation	033N	089W	22	NW1/4NW1/4	-107.49882	42.82301		MON	04/11/1997		60.00	21	0
P104183.0W	MW 75	Umetco Minerals Corporation	033N	089W	14	NE1/4SW1/4	-107.47455	42.83006		MON	10/15/1996		205.00	120.93	0
P104184.0W	MW 76	Umetco Minerals Corporation	033N	089W	8	NE1/4SE1/4	-107.52351	42.84479	Complete	MON	10/15/1996		142.00	95.55	0
P104185.0W	MW 77	Umetco Minerals Corporation	033N	089W	9	SW1/4SE1/4	-107.5087	42.84119	Complete	MON	10/15/1996		279.00	231.01	0
P67146.0W	MW1	Union Carbide Corporation	033N	089W	10	SW1/4SE1/4	-107.48923	42.84099	Complete	MON	04/23/1984		79.00	58.24	0
P67152.0W	MW10	Union Carbide Corporation	033N	089W	15	SW1/4NE1/4	-107.4892	42.83374		MON	04/23/1984		160.00	95	0
P67153.0W	MW16	Union Carbide Corporation	033N	089W	10	SW1/4SW1/4	-107.49889	42.84115	Abandoned	MON	04/23/1984		200.00	-7.00	0
P67154.0W	MW17	Union Carbide Corporation	033N	089W	10	NE1/4SW1/4	-107.49402	42.84469		MON	04/23/1984		160.00	105	0
P67155.0W	MW18	Union Carbide Corporation	033N	089W	10	NW1/4SE1/4	-107.4892	42.84461		MON	04/23/1984		80.00	53	0
P67156.0W	MW19	Union Carbide Corporation	033N	089W	10	SE1/4SE1/4	-107.4844	42.84091		MON	04/23/1984		110.00	67	0
P67147.0W	MW2	Union Carbide Corporation	033N	089W	10	SW1/4SW1/4	-107.49889	42.84115		MON	04/23/1984		170.00	125	0
P67157.0W	MW20	Union Carbide Corporation	033N	089W	15	NE1/4NE1/4	-107.48439	42.83729		MON	04/23/1984		90.00	65	0
P67158.0W	MW21	Union Carbide Corporation	033N	089W	10	SW1/4SW1/4	-107.49889	42.84115		MON	04/23/1984		159.00	-7.00	0
P83055.0W	MW-21A	Umetco Minerals Corporation	033N	089W	10	NW1/4SW1/4	-107.4989	42.84477	Complete	MON	07/23/1990		200.00	165.87	0
P67159.0W	MW23	Union Carbide Corporation	033N	089W	10	NW1/4SE1/4	-107.4892	42.84461		MON	04/23/1984		140.00	80	0
P76332.0W	MW25	Umetco Minerals Corporation	033N	089W	15	NW1/4NW1/4	-107.49888	42.83752	Complete	MON	02/19/1988		256.00	227.5	0
P76333.0W	MW26	Umetco Minerals Corporation	033N	089W	10	NW1/4SW1/4	-107.4989	42.84477		MON	02/19/1988		160.00	90	0
P76334.0W	MW27	Umetco Minerals Corporation	033N	089W	11	SW1/4SW1/4	-107.47955	42.84088		MON	02/19/1988		121.00	41	0
P67180.0W	MW30026	USDI, BLM** Umetco Minerals Corporation	033N	089W	22	NW1/4NW1/4	-107.49882	42.82301		MON	04/23/1984		193.00	77	0
P67148.0W	MW4	Union Carbide Corporation	033N	089W	10	SW1/4SE1/4	-107.48923	42.84099		MON	04/23/1984		140.00	82	0
P67149.0W	MW6	Union Carbide Corporation	033N	089W	15	NW1/4SE1/4	-107.48918	42.83011		MON	04/23/1984		220.00	162	0
P91081.0W	MW-63	Umetco Minerals Corporation	033N	089W	15	NE1/4SW1/4	-107.49402	42.83018	Abandoned	MON	03/19/1993		180.00	120	0
P91082.0W	MW-64	Umetco Minerals Corporation	033N	089W	10	SW1/4SW1/4	-107.49889	42.84115	Complete	MON	03/19/1993		260.00	160	0
P91083.0W	MW-65	Umetco Minerals Corporation	033N	089W	15	SW1/4NW1/4	-107.49887	42.83387	Abandoned	MON	03/19/1993		180.00	120	0
P67150.0W	MW7	Union Carbide Corporation	033N	089W	15	NE1/4SW1/4	-107.49402	42.83018		MON	04/23/1984		220.00	145	0
P108001.0W	MW78	Umetco Minerals Corporation	033N	089W	15	SE1/4SW1/4	-107.494	42.82656		MON	11/04/1997		150.00	111.45	0
P108002.0W	MW79	Umetco Minerals Corporation	033N	089W	15	SE1/4SW1/4	-107.494	42.82656		MON	11/04/1997		150.00	118.83	0
P67151.0W	MW8	Union Carbide Corporation	033N	089W	15	SW1/4NE1/4	-107.4892	42.83374		MON	04/23/1984		159.00	57.15	0
P108003.0W	MW80	Umetco Minerals Corporation	033N	089W	15	SE1/4SW1/4	-107.494	42.82656		MON	11/04/1997		155.00	117.48	0
P108004.0W	MW81	Umetco Minerals Corporation	033N	089W	10	SW1/4SW1/4	-107.49889	42.84115		MON	11/04/1997		240.00	171	0
P144110.0W	MW82	Umetco Minerals Corporation	033N	089W	22	NW1/4NW1/4	-107.49882	42.82301	Complete	MON	04/26/2002		115.00	86	0
P91277.0W	MWC 55	Umetco Minerals Corporation	033N	089W	10	NE1/4SE1/4	-107.4844	42.84452		MIS	03/19/1993		171.78	112.5	7
P91278.0W	MWC 56	Umetco Minerals Corporation	033N	089W	15	NE1/4NW1/4	-107.49405	42.83744		MIS	03/19/1993		261.00	171	5
P91279.0W	MWC 57	Umetco Minerals Corporation	033N	089W	15	NE1/4NW1/4	-107.49405	42.83744		MIS	03/19/1993		252.00	165	6
P91280.0W	MWC 58	Umetco Minerals Corporation	033N	089W	10	SE1/4SW1/4	-107.49404	42.84107		MIS	03/19/1993		250.00	154	6

Appendix A Water Rights Within Five-Mile Radius of East Gas Hills Site

Permit Number	Facility Name	Permit Applicant	Tns	Rng	Section	Qtr Qtr	Longitude	Latitude	Status	Uses	Priority	Source	Permit Well Depth	Permit Static Water Depth	Total Flow
P91281.0W	MWC 59	Umetco Minerals Corporation	033N	089W	10	SE1/4SW1/4	-107.49404	42.84107		MIS	03/19/1993		250.00	147	6
P91282.0W	MWC 60	Umetco Minerals Corporation	033N	089W	15	SE1/4SW1/4	-107.494	42.82656		MIS	03/19/1993		160.00	111	4
P91283.0W	MWC 61	Umetco Minerals Corporation	033N	089W	15	SE1/4SW1/4	-107.494	42.82656		MIS	03/19/1993		150.00	116	3.5
P91284.0W	MWC 62	Umetco Minerals Corporation	033N	089W	15	SE1/4SW1/4	-107.494	42.82656		MIS	03/19/1993		165.00	107	4
P82562.0W	MWC-33	Umetco Minerals Corporation	033N	089W	15	NE1/4NW1/4	-107.49405	42.83744		MIS	04/27/1990		210.00	121.81	2
P82563.0W	MWC-34	Umetco Minerals Corporation	033N	089W	15	NE1/4NW1/4	-107.49405	42.83744		MIS	04/27/1990		200.00	157.06	3
P82564.0W	MWC-35	Umetco Minerals Corporation	033N	089W	10	SE1/4SW1/4	-107.49404	42.84107		MIS	04/27/1990		190.00	148.03	5
P82565.0W	MWC-36	Umetco Minerals Corporation	033N	089W	10	SE1/4SW1/4	-107.49404	42.84107		MIS	04/27/1990		200.00	143.41	12
P83269.0W	MWC-42	Umetco Minerals Corporation	033N	089W	10	SE1/4SW1/4	-107.49404	42.84107		MIS	08/15/1990		240.00	138	10
P84751.0W	MWC-45	Umetco Minerals Corporation	033N	089W	15	NW1/4NE1/4	-107.48922	42.83737		MIS	03/18/1991		240.00	195.24	15
P84752.0W	MWC-46	Umetco Minerals Corporation	033N	089W	15	NW1/4NE1/4	-107.48922	42.83737	Cancelled	MIS	03/18/1991		240.00	199.9	12
P84753.0W	MWC-47	Umetco Minerals Corporation	033N	089W	15	NW1/4NE1/4	-107.48922	42.83737		MIS	03/18/1991		255.00	188	15
P84754.0W	MWC-48	Umetco Minerals Corporation	033N	089W	15	NW1/4NE1/4	-107.48922	42.83737		MIS	03/18/1991		245.00	177.92	15
P84755.0W	MWC-49	Umetco Minerals Corporation	033N	089W	15	NW1/4NE1/4	-107.48922	42.83737		MIS	03/18/1991		240.00	156.35	15
P92098.0W	MWC-66	Umetco Minerals Corporation	033N	089W	15	NW1/4NE1/4	-107.48922	42.83737	Abandoned	MIS	06/18/1993		190.00	120	15
P84648.0W	MWI 43	Umetco Minerals Corporation	033N	089W	15	NW1/4NW1/4	-107.49888	42.83752		MON	03/18/1991		240.00	194.8	0
P82566.0W	MWI-37	Umetco Minerals Corporation	033N	089W	10	SW1/4SW1/4	-107.49889	42.84115		MON	04/27/1990		240.00	222.9	0
P82567.0W	MWI-38	Umetco Minerals Corporation	033N	089W	10	SW1/4SW1/4	-107.49889	42.84115		MON	04/27/1990		230.00	195.88	0
P82568.0W	MWI-39	Umetco Minerals Corporation	033N	089W	10	SW1/4SW1/4	-107.49889	42.84115		MON	04/27/1990		253.00	222	0
P84649.0W	MWI-44	Umetco Minerals Corporation	033N	089W	10	SW1/4SW1/4	-107.49889	42.84115		MON	03/18/1991		240.00	169.22	0
P84650.0W	MWI-50	Umetco Minerals Corporation	033N	089W	15	NE1/4NE1/4	-107.48439	42.83729		MON	03/18/1991		240.00	171	0
P84651.0W	MWI-51	Umetco Minerals Corporation	033N	089W	15	NE1/4NE1/4	-107.48439	42.83729		MON	03/18/1991		240.00	159	0
P84652.0W	MWI-52	Umetco Minerals Corporation	033N	089W	15	NE1/4NE1/4	-107.48439	42.83729		MON	03/18/1991		245.00	144	0
P11701.0D	Nellie Ditch	Grieve, Nellie B.	034N	088W	26	NE1/4NE1/4	-107.341668	42.895378	Cancelled	IRR_SW	02/06/1913				
P1226.0D	O. K. Ditch	Biggs, Josie P.	033N	088W	17	NW1/4NW1/4	-107.413487	42.838921	Cancelled	IRR_SW	05/11/1896	Deer Creek			1.14
P81601.0W	Pay #1	Umetco Minerals Corporation	033N	089W	15	SE1/4SE1/4	-107.48433	42.82642	Cancelled	MIS	12/26/1989		200.00	97	1200
P57999.0W	Pay #1	Union Carbide Corporation	033N	089W	15	SE1/4SE1/4	-107.48433	42.82642	Cancelled	MIS	05/04/1981		200.00	97	1200
P102340.0W	Philps #1		033N	089W	4	NE1/4SE1/4	-107.50388	42.85907		STK	05/13/1996				25
P10861.0D	Pine Tree Ditch	Diamond Ring Co.	033N	089W	8	SW1/4NW1/4	-107.538414	42.848486	Cancelled	IRR_SW; STO	07/17/1911	Pine Tree Spring			0.07
P106686.0W	PIX MU 97-1	Power Resources, Inc.	033N	089W	22	NE1/4SW1/4	-107.49391	42.81574	Complete	MON	07/01/1997		245.00	90	0
P92914.0W	PRI #1	PRI Environmental Inc.	033N	089W	28	SE1/4NE1/4	-107.50367	42.80491	Complete	MON	10/01/1993		275.00	153.58	0
P162305.0W	Process Water Well #6	Umetco Minerals Corporation	033N	089W	18	NE1/4SW1/4	-107.55296	42.83043	Complete	IND_GW	08/16/2004		1685.00	90	300
P73515.0W	Process Water Well #6	Umetco Minerals Corporation	033N	089W	18	NE1/4SW1/4	-107.55296	42.83043	Cancelled	IND_GW	06/19/1986		1685.00	90	300
P8422.0R	Project 9 N9D Reservoir		033N	089W	16	SE1/4SE1/4	-107.503722	42.826669	Cancelled	FLO; MIS_SW; COMBBU	03/11/1982	Mine Draw			5.58
P67168.0W	PW1	USDI, BLM** Umetco Minerals Corporation	033N	089W	15	NE1/4SW1/4	-107.49402	42.83018		MON	04/23/1984		220.00	168	0
P67169.0W	PW2	USDI, BLM** Umetco Minerals Corporation	033N	089W	15	SW1/4SW1/4	-107.49884	42.82663		MON	04/23/1984		220.00	192	0
P67170.0W	PW3	USDI, BLM** Umetco Minerals Corporation	033N	089W	15	SW1/4SW1/4	-107.49884	42.82663		MON	04/23/1984		220.00	148	0
P67171.0W	PW4	USDI, BLM** Umetco Minerals Corporation	033N	089W	22	NE1/4NW1/4	-107.49398	42.82294	Complete	MON	04/23/1984		230.00	100	0
P67172.0W	PW5	USDI, BLM** Umetco Minerals Corporation	033N	089W	22	NE1/4NW1/4	-107.49398	42.82294		MON	04/23/1984		160.00	120.72	0
P67173.0W	PW6	USDI, BLM** Umetco Minerals Corporation	033N	089W	22	NE1/4NW1/4	-107.49398	42.82294		MON	04/23/1984		136.00	122.39	0
P67174.0W	PW7	USDI, BLM** Umetco Minerals Corporation	033N	089W	15	SW1/4SE1/4	-107.48916	42.82649		MON	04/23/1984		260.00	-7.00	0
P93801.0W	PWR #107 Spring (77)	USDI, Bureau of Land Management	033N	089W	18	NE1/4SW1/4	-107.55296	42.83043	Fully Adjudicated	STK	04/17/1926		-1.00	-1.00	10
P44796.0W	Rattlesnake #1		033N	088W	7	NE1/4NE1/4	-107.42048	42.85183	Fully Adjudicated	STK	09/01/1978		2.00	-4.00	1
P44797.0W	Rattlesnake #2		033N	088W	8	SE1/4NE1/4	-107.40082	42.84822	Fully Adjudicated	STK	09/01/1978		4.00	-4.00	0.5
P44798.0W	Rattlesnake #3		033N	088W	8	SW1/4NE1/4	-107.40577	42.8482	Fully Adjudicated	STK	09/01/1978		5.00	-4.00	25
P44799.0W	Rattlesnake #4		033N	088W	8	SW1/4SW1/4	-107.41591	42.84079	Fully Adjudicated	STK	09/01/1978		5.00	-4.00	4
P44800.0W	Rattlesnake #5		033N	088W	17	NE1/4NE1/4	-107.40085	42.83723	Fully Adjudicated	STK	09/01/1978		3.00	-4.00	2
P194061.0W	RHS-1-M-10	Strathmore Resources	033N	089W	8	SW1/4SE1/4	-107.526136	42.840143	Incomplete	MON	10/15/2010				
P194062.0W	RHS-2-M-10	Strathmore Resources	033N	089W	5	SE1/4SE1/4	-107.522342	42.8547	Incomplete	MON	10/15/2010				
P194063.0W	RHS-3-M-10	Strathmore Resources	033N	089W	4	SW1/4SE1/4	-107.508474	42.856317	Incomplete	MON	10/15/2010				

Appendix A Water Rights Within Five-Mile Radius of East Gas Hills Site

Permit Number	Facility Name	Permit Applicant	Tns	Rng	Section	Qtr Qtr	Longitude	Latitude	Status	Uses	Priority	Source	Permit Well Depth	Permit Static Water Depth	Total Flow
P40467.OW	RHW-1		033N	089W	9	SE1/4SW1/4	-107.51362	42.84118	Complete	MON	08/05/1977		160.00	154	0
P40468.OW	RHW-2		033N	089W	9	NE1/4SW1/4	-107.51363	42.84479	Complete	MON	08/05/1977		134.00	-7.00	0
P41022.OW	RHW-3		033N	089W	9	SE1/4SE1/4	-107.50378	42.84119	Complete	MON	11/16/1977		310.00	257	0
P41021.OW	RHW-4		033N	089W	9	SW1/4NE1/4	-107.50873	42.8484	Complete	MON	11/16/1977		280.00	0	0
P41023.OW	RHW-5		033N	089W	9	SW1/4SW1/4	-107.51854	42.84117	Complete	MON	11/16/1977		180.00	0	0
P49068.OW	Rim #1	Union Carbide Corporation	033N	089W	9	SE1/4SW1/4	-107.51362	42.84118	Cancelled	IND_GW; MIS	07/09/1979		220.00	140	292
P8461.OR	Rim #1 Settling Reservoir	Umetco Minerals Corporation	033N	089W	9	SW1/4SW1/4	-107.517056	42.842567	Cancelled	IND_SW; TEM; COMBBU	09/14/1981	Rim Draw			15.63
P8462.OR	Rim #2 Settling Reservoir	Umetco Minerals Corporation	033N	089W	8	NE1/4SE1/4	-107.523512	42.844794	Cancelled	IND_SW; TEM; COMBBU	09/14/1981	Iron Springs Draw			1.14
P8463.OR	Rim #3 Settling Reservoir	Umetco Minerals Corporation	033N	089W	8	NE1/4SE1/4	-107.523512	42.844794	Cancelled	IND_SW; TEM; COMBBU	09/14/1981	Iron Springs Draw			13.48
P67187.OW	Rim 1	Union Carbide Corporation	033N	089W	9	SW1/4SW1/4	-107.51854	42.84117		MON	04/23/1984		300.00	179	0
P67188.OW	Rim 2	Union Carbide Corporation	033N	089W	9	SE1/4NW1/4	-107.51365	42.8484		MON	04/23/1984		260.00	78	0
P67189.OW	Rim 3	Union Carbide Corporation	033N	089W	8	NE1/4SE1/4	-107.52351	42.84479		MON	04/23/1984		196.00	87	0
P10075.OS	Rim Stock Reservoir		033N	089W	35	NE1/4SW1/4	-107.474328	42.786867		STO	01/27/1987	Middle Sage Hen Creek			6.78
P71762.OW	Roberts Spring	Clear Creek Cattle Co.	034N	088W	31	NW1/4NE1/4	-107.42572	42.88063	Fully Adjudicated	STK	09/13/1984				
P67181.OW	RW1	USDI, BLM** Umetco Minerals Corporation	033N	089W	22	NW1/4NW1/4	-107.49882	42.82301		MON	04/23/1984		130.00	87.04	0
P67182.OW	RW2	USDI, BLM** Umetco Minerals Corporation	033N	089W	22	NW1/4NW1/4	-107.49882	42.82301		MON	04/23/1984		120.00	76	0
P46378.OW	Sage Hen #1	Matador Cattle Company	033N	089W	26	SE1/4SE1/4	-107.46452	42.79767	Complete	STK	08/14/1978		5.00	-4.00	1
P94134.OW	Spring #7	USDI, Bureau of Land Management	033N	088W	19	NW1/4SW1/4	-107.44021	42.81553	Fully Adjudicated	STK	04/17/1926		-1.00	-1.00	5
P94135.OW	Spring #8	USDI, Bureau of Land Management	033N	088W	19	SW1/4SW1/4	-107.43523	42.81368	Fully Adjudicated	STK	04/17/1926		-1.00	-1.00	5
P8123.OR	Tailings Evaporation Pond Reservoir		033N	089W	15	SE1/4SE1/4	-107.496739	42.827989	Cancelled	IND_SW	04/03/1980	Union Draw			193.49
P80984.OW	Thunderbird Pit	Roth Trucking	033N	089W	21	NW1/4NW1/4	-107.51846	42.82309	Cancelled	MIS	10/20/1989				70
P59.OW	Trusheim #1	Loyd Farms	033N	089W	15	SE1/4NE1/4	-107.48437	42.83367	Cancelled	IND_GW	08/29/1958				100
P60.OW	Trusheim #2	Globe Mining Co.	033N	089W	15	SE1/4NE1/4	-107.48437	42.83367	Cancelled	IND_GW	08/29/1958				100
P61.OW	Trusheim #3	Globe Mining Co.	033N	089W	14	SW1/4NW1/4	-107.4795	42.83365	Cancelled	IND_GW	08/29/1958				100
P62.OW	Trusheim #4	Globe Mining Co.	033N	089W	14	NW1/4SW1/4	-107.47947	42.83003	Cancelled	IND_GW	08/29/1958				100
P94133.OW	Upper Mac Spring	USDI, Bureau of Land Management	033N	088W	30	NW1/4NW1/4	-107.44013	42.80831	Fully Adjudicated	STK	04/17/1926		-1.00	-1.00	1
P46770.OW	UPZ 1	Silver King Mines, Inc.	033N	089W	33	SW1/4NW1/4	-107.5183	42.79054	Cancelled	MIS	12/21/1977		865.00	450	50
P31502.OW	UPZ 415 P	Silver King Mines, Inc.	033N	089W	33	SW1/4NW1/4	-107.5183	42.79054	Cancelled	MIS	11/12/1975		881.00	425	0
P31503.OW	UPZ 416P	Silver King Mines, Inc.	033N	089W	32	NE1/4SE1/4	-107.52316	42.78695	Cancelled	MIS	11/12/1975		875.00	460	0
P31504.OW	UPZ 417P		033N	089W	33	SW1/4NW1/4	-107.5183	42.79054	Abandoned	MIS	11/12/1975		650.00	460	0
P31505.OW	UPZ 418P	Silver King Mines, Inc.	033N	089W	32	NE1/4SE1/4	-107.52316	42.78695	Cancelled	MIS	11/12/1975		720.00	430	0
P31506.OW	UPZ 438P	Silver King Mines, Inc.	033N	089W	32	SE1/4NE1/4	-107.52318	42.79056	Cancelled	MIS	11/20/1975		822.00	430	0
P8172.OR	UPZ Settling Pond Reservoir	Federal American Partners	033N	089W	29	SE1/4SE1/4	-107.523225	42.797789	Cancelled	IND_SW	10/27/1980	UPZ Draw			15.15
P30698.OW	UPZ Well #1		033N	089W	33	NW1/4NW1/4	-107.51832	42.79416	Cancelled	MON	07/30/1975		925.00	470	-1.00
P31252.OW	UPZ Well #2		033N	089W	32	SE1/4NE1/4	-107.52318	42.79056	Cancelled	MON	09/22/1975		806.00	440	0
P46769.OW	UPZ Well #2	Silver King Mines, Inc.	033N	089W	32	SE1/4NE1/4	-107.52318	42.79056	Cancelled	MIS	10/24/1977		806.00	404	56
P46777.OW	UPZ Well #3	Silver King Mines, Inc.	033N	089W	33	SW1/4NW1/4	-107.5183	42.79054	Cancelled	MIS	04/20/1978		980.00	637	50
P46778.OW	UPZ Well #4	Silver King Mines, Inc.	033N	089W	33	SW1/4NW1/4	-107.5183	42.79054	Cancelled	MIS	04/20/1978		889.00	450	50
P81658.OW	Veca Pit	Wyo State Dept. of Environmental Quality	033N	089W	22	NW1/4SW1/4	-107.49878	42.81577	Cancelled	IND_GW	01/11/1990				5000
P9573.OR	Veca Pond Reservoir	USDI, Bureau of Land Management	033N	089W	22	NW1/4SW1/4	-107.498363	42.815969	Unadjudicated	STO; WIL; COMBBU	01/23/1990	Veca Draw			55.55
P79359.OW	W W Butler Disposal Pit	W. W. Butler Inc.	034N	089W	1	NW1/4SE1/4	-107.44989	42.94611	Cancelled	IND_GW; MIS	03/30/1989				
P30711.OD	Water Haul 16F	E.H. Oftedal Construction, Inc.	033N	089W	21	NW1/4NW1/4	-107.518457	42.823086	Cancelled	IND_SW; TEM	09/16/1991	PC Pit Draw			2
P30863.OD	Water Haul 16F1B	Carr Construction Co., Inc.	033N	089W	21	NW1/4NW1/4	-107.518457	42.823086	Cancelled	IND_SW; TEM	07/28/1992	PC Pit Draw			2
P26779.OD	Water Haul No. 1	Butler, W.W.	034N	088W	6		-107.440433	42.942302	Cancelled	DRI; IND_SW; OIL; TEM	09/30/1980				
P215.OW	Water Well #3	Globe Mining Co.	033N	089W	18	SW1/4SW1/4	-107.55782	42.82682	Incomplete	IND_GW	08/24/1959		1668.00	20	250
P290.OW	Water Well #6	Globe Mining Co.	033N	089W	18	NE1/4SW1/4	-107.55296	42.83043	Cancelled		02/04/1960		1685.00	30	364
P71821.OW	Waterworks Well	Clear Creek Cattle Co.	034N	088W	26	NW1/4NE1/4	-107.34659	42.89538	Incomplete	MIS	10/09/1984				
P8525.OS	West Canyon Creek #1 Stock Reservoir	Matador Cattle Company	033N	089W	34	NW1/4NW1/4	-107.498754	42.794028	Cancelled	STO	11/08/1978	West Canyon Creek			0.07
P103586.OW	WSL96M-1	Power Resources, Inc.	033N	089W	28	NE1/4SE1/4	-107.50366	42.80128	Complete	MON	08/29/1996		365.00	175.25	0
P103591.OW	WSL96MP1	Power Resources, Inc.	033N	089W	28	NW1/4SE1/4	-107.50856	42.80133	Complete	MON	08/29/1996		275.00	148.25	0