



NEW MEXICO  
Junior College

TO: NMJC Board Members and Dr. Steve McCleery

FROM: Dr. Larry Sanderson, Director of Institutional Effectiveness  
Mary Ann Crane, Coordinator of Assessment and Quality Improvement

DATE: January 19, 2011

# NMJC

## State of the College Report

### January 2011

This report is the second in an annual series of reports presenting general information and data concerning NMJC's progress towards achieving the goals set forth in the 2010-2016 Strategic Plan. The format of this report as well as the data presented within will evolve over the coming years as the institution gathers more data related to plan objectives and organizational performance. Additional reports related to institutional performance and assessment of student learning can be found on the college website at:

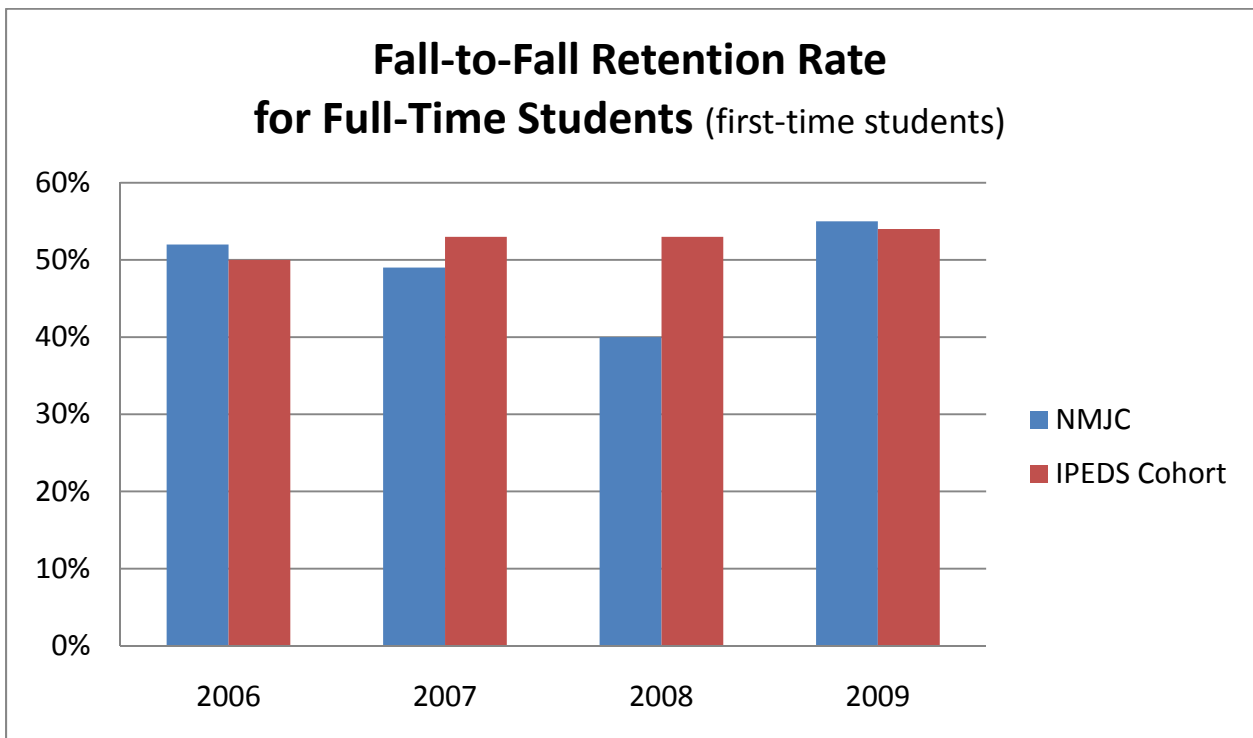
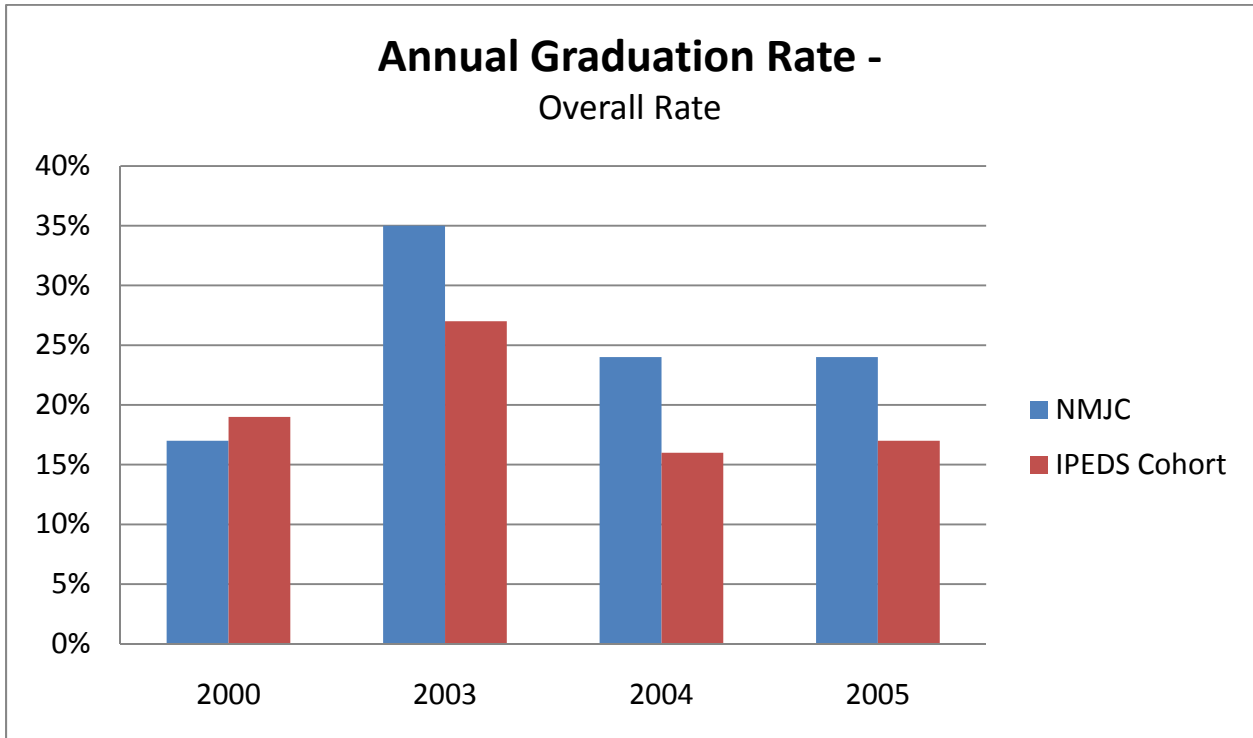
<http://www.nmjc.edu/facultyandstaff/assessmentofstudentlearning.aspx>

and

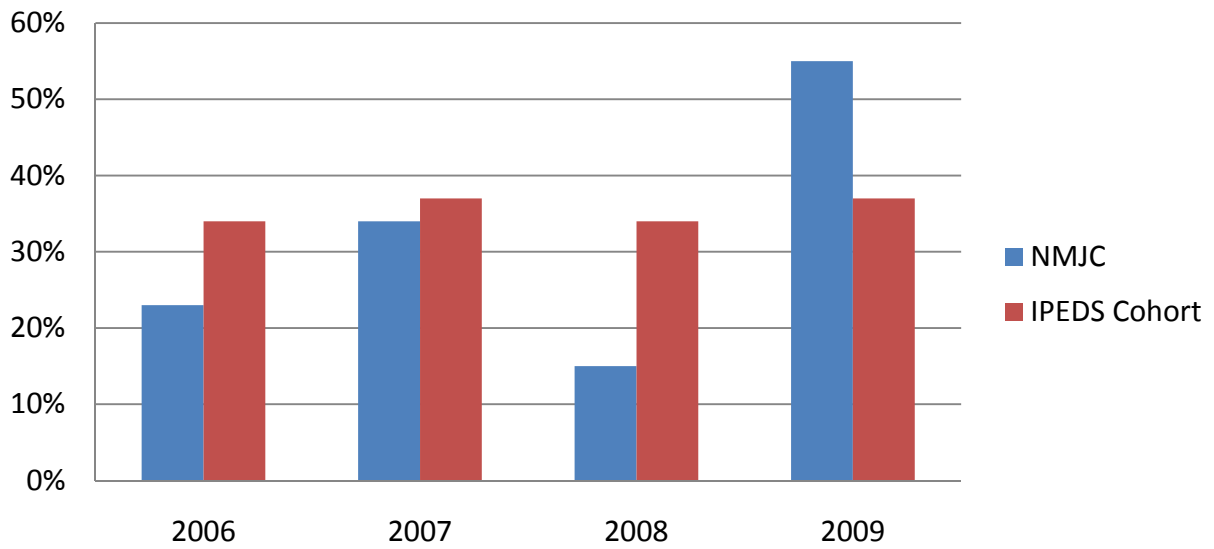
<http://www.nmjc.edu/administration/institutionaleffectiveness.aspx>



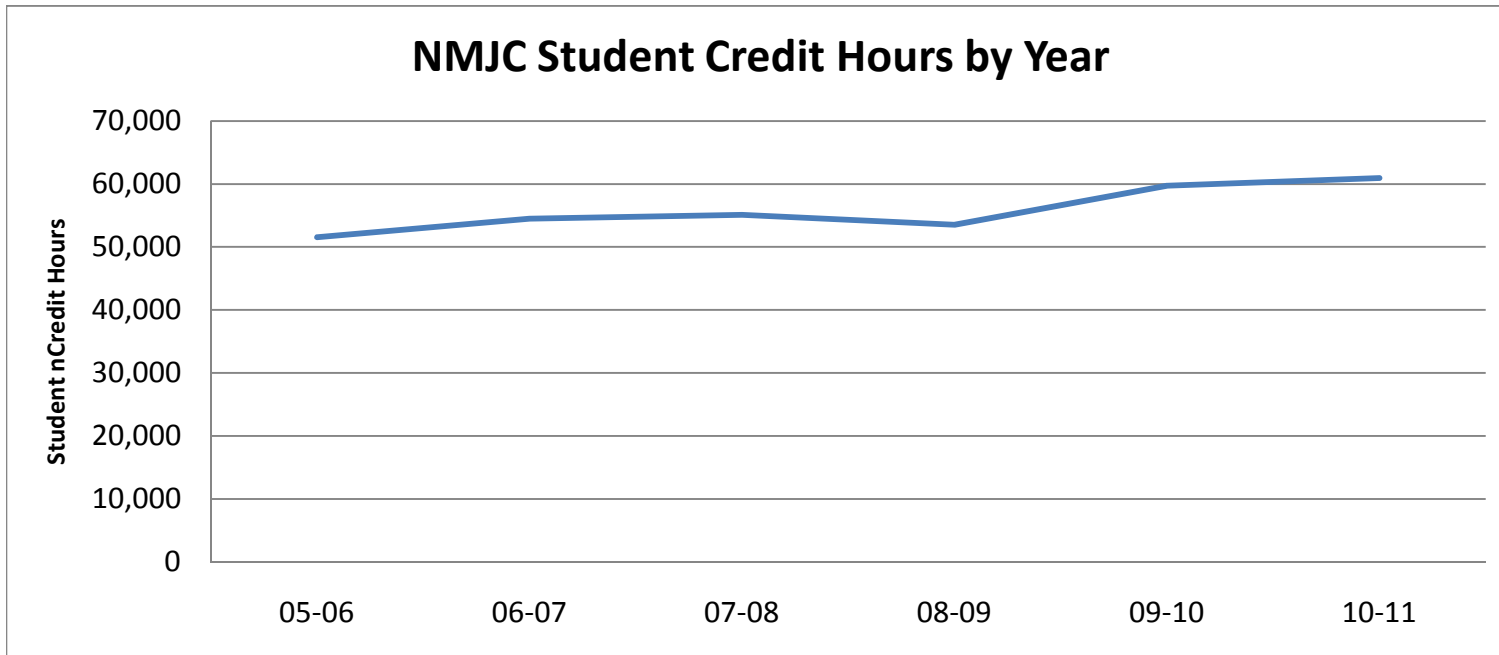
Comparison of NMJC Performance to IPEDS Identified Cohort  
 Source: Integrated Post-Secondary Reporting System  
 U.S. Department of Education



## Fall-to-Fall Retention Rate for Part-Time Students (first-time students)



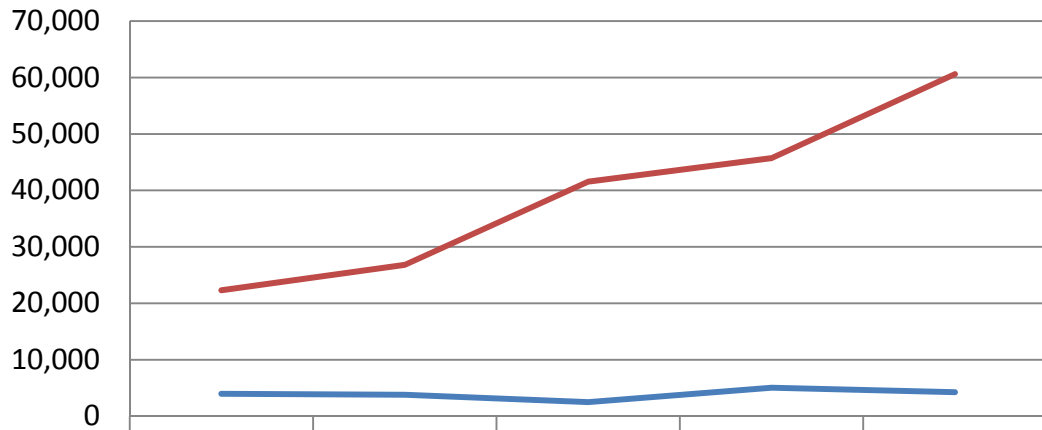
## NMJC Student Credit Hours by Year



	05-06	06-07	07-08	08-09	09-10	10-11
Summer	5,663	5,099	6,166	5,124	7,200	7,265
Fall	23,955	25,837	26,009	24,027	28,205	28,858
Spring	21,919	23,540	22,941	24,390	24,325	24,811
	<b>51,537</b>	<b>54,476</b>	<b>55,116</b>	<b>53,541</b>	<b>59,730</b>	<b>60,934</b>

**NOTE:** Spring 2011 Student Credit Hours are estimated based on enrollment projection.

## NMJC Non-credit Workforce Training Participants and Contact Hours



	2006	2007	2008	2009	2010
— Participants	3,983	3,800	2,510	5,049	4,251
— Contact Hours	22,319	26,821	41,563	45,721	60,610

Note: External funding support for workforce training is calculated based on annual contact hours.

External funding for workforce training:

	FY10 External Funds Received	FY11 External Funds Received
Amount received	\$78,739	\$98,581
Rank in state programs	#2	#2

# NMJC Funding

## Report of External and Foundation Funding

As of June 30, 2010

	June 2009	June 2010
NMJC Foundation		
Endowment Balance	\$4,188,977	\$4,668,321
Total Donations Received	\$293,503	\$209,875
External Funding Received		
Government Grants	\$1,511,983	\$1,565,915
Private Foundations	\$487,322	\$165,458

**New Mexico Community Colleges**  
**Community College Performance-Based Indicators**  
**Reporting Date: September 2010**

# Performance Measures	FY 08 Actual	FY 09 Actual	FY 10 Actual	FY 11 Budget	FY 12 Target
1 Percent successful after 3 years	55.9%	58.6%	61.7%	60.0%	62.0%
10 Percent complete within 150% of time	27.4%	24.1%	18.2%	33.0%	33.0%
2 Percent placed in jobs in New Mexico	68.0%	72.4%	75.8%	75.0%	75.0%
3 Percent of Hispanic students enrolled	38.8%	39.7%	38.8%	39.0%	39.0%
4 Percent of Hispanic graduates	37.2%	40.1%	42.1%	45.0%	45.0%
5 Number enrolled in area voc. School*	336	320	-	400	-
5 Contract training clients (rev. measure)	2,510	5,049	4,251	5,000	5,000
6 Number enrolled in distance education	13,183	15,412	18,548	15,000	17,000
7 Percent of programs with stable or increasing enrollment	61.9%	62.9%	65.0%	82.0%	82.0%
8 Percent persisting to following spring	63.4%	61.8%	62.0%	73.5%	73.5%
9 Percent placed in jobs or continuing education in New Mexico	77.7%	83.3%	85.7%	85.0%	85.0%

\* Vocational School Measure changed to Contract Training (see note in PBB I 5).