

Significant Activities — Enforcement Section

During 2008, Administrative Compliance Orders (ACOs) that compel compliance and assess civil penalties were issued to 12 Respondents. With only three exceptions, all of the ACOs have been resolved. The three unresolved enforcement actions include a Respondent that was unable to be located, a Respondent awaiting a public hearing, and a Respondent awaiting a post-hearing determination by the NMED Secretary. All civil penalties paid as a result of formal enforcement actions are credited to the Solid Waste Facility Grant Fund.

Administrative Compliance Orders Issued in 2008

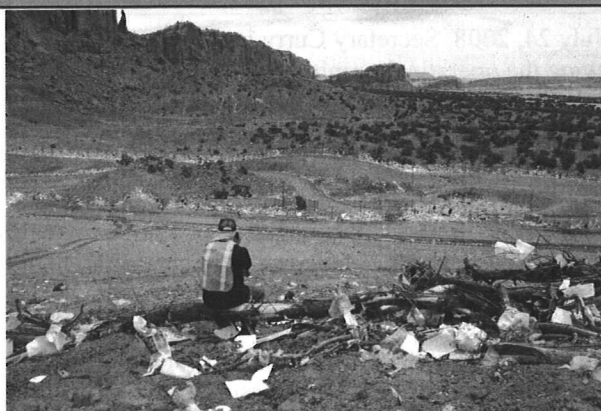
Respondent	ACO Issued	Penalty Amount	Comments
Olivas Trucking Company, LLC	1/8/2008	N/A	Unregistered hauling of Petroleum Contaminated Soils (PCS) & special waste manifest violations; <i>(Unable to locate and serve ACO on Respondents)</i>
Pete's Landscaping	1/8/2008	\$3,600 (Paid)	Hauling PCS, not authorized in registration & special waste manifest violations
Lea Land, Inc.	4/30/2008 (amended and re-issued 1/7/2009)	\$1,048,900 (Assessed)	Improper disposal of regulated asbestos waste, denial of access, failure to perform ground water monitoring, lack of compaction and cover, failure to adequately characterize solid waste prior to disposal, and special waste manifest violations
St. Vincent Regional Medical Center	5/5/2008	\$43,500 (Paid)	Three separate truck loads containing infectious waste improperly disposed at the Caja Del Rio Landfill, August 8, 10, and 17, 2007
Fresenius Medical Services North America d/b/a Fresenius Medical Services	5/29/2008	\$7,000 (Paid)	One load of waste containing infectious waste improperly disposed at the Lea County Regional Landfill on October 18, 2007
Los Alamos Medical Center	7/1/2008	\$31,000 (Paid)	Three separate truck loads of waste containing infectious waste improperly disposed at the Los Alamos County Landfill on 10/20/2006, 12/5/2006, and 1/3/2007, including recognizable human anatomical remains
Cordova & Sons Tire Recycling Facility	7/24/2008	N/A	ACO revoked Tire Recycling Facility permit; public hearing held; revocation became effective September 17, 2008
Montoya Trucking	8/1/2008	N/A	ACO revoked the hauler registration due to failure to acquire a current and updated registration; revocation became effective September 5, 2008
Physicians Plaza Surgery Center	8/3/2008	\$10,000 (Paid)	One load containing infectious waste improperly disposed at the Caja Del Rio Landfill during November 2007
Town of Vaughn	11/14/2008	\$214,100 (Assessed)	Multiple violations at the Vaughn Landfill, including no permit application or closure/post-closure care plan, lack of Ground Water Monitoring Plan and lack of monitoring, no financial assurance, lack of daily cover, long-term recyclables storage; public hearing held June 17, 2009; post-hearing decision by the Secretary is pending
KSL Services JV	11/18/2008	\$1,250 (Paid)	Hauling MSW from LANL without registration; registered on expedited basis
Northwest New Mexico Regional Solid Waste Authority	12/16/2008	\$120,000 (Agreed to Pay)	Multiple and repeated violations at the Red Rocks Regional Landfill, including lack of daily and intermediate cover, litter, unsafe recycling operations, improper management of special wastes—including OCD wastes, missing methane monitoring plan and events, and leachate management deficiencies

Enforcement Section — Significant Activities

Red Rocks Regional Landfill

McKinley County

On December 16, 2008, Secretary Curry issued an Administrative Compliance Order (ACO) to the Northwest New Mexico Regional Solid Waste Authority for multiple operational and permit-related violations at the Red Rocks Regional Landfill, Thoreau, New Mexico. The violations addressed in the ACO were identified during the Solid Waste Bureau's June 2008 inspection, though many of the violations have been ongoing for several years and were cited during previous inspections – indicating a substantial pattern of non-compliance.



SWB Enforcement Section Manager surveys the blown litter resulting from failure to apply daily and intermediate cover at the landfill

The violations documented in the ACO included the landfill's failure to apply daily or intermediate cover, unsafe and unsanitary recycling operations, failure to monitor for methane, failure to properly manage leachate, failure to properly characterize special waste prior to acceptance, acceptance of hundreds of loads of non-manifested special waste, failure to maintain a proper operating record and produce such records during inspection, and the general failure to operate the facility in a manner that prevents hazards to human health and the environment. Such violations are contrary to the requirements of the New Mexico Solid Waste Rules and the landfill's permit. The ACO compelled compliance and assessed a civil penalty of \$371,400.

Improper Handling of Medical Waste:

Fresenius Medical Services (Hobbs) On May 29, 2008, Secretary Curry issued an ACO compelling compliance and assessing a civil penalty of \$7,000 to Fresenius Medical Services. The ACO was issued for the improper disposal of infectious waste at a local landfill.

The infectious waste was discovered during a load inspection conducted at the Lea County Regional Landfill on October 18, 2007. Fresenius Medical Services provided a corrective action plan outlining proper infectious waste management and paid the \$7,000 penalty.

Los Alamos Medical Center (Los Alamos) On July 1, 2008, Secretary Curry issued an ACO with penalties of \$51,250 to the Los Alamos Medical Center for violating state Solid Waste Management Rules by disposing of infectious waste at a local landfill.

The violations stem from waste screening inspections that determined the hospital disposed of infectious waste - including two human placentas with attached umbilical cords, vials of blood and needles - at Los Alamos County Landfill in 2006 and 2007.

The Solid Waste Act and New Mexico Solid Waste Rules bar medical facilities from disposing of infectious waste at a landfill. Infectious waste requires treatment or incineration to render it noninfectious before it can be disposed at a landfill.



Infectious waste management company containerizing and removing infectious waste that was improperly disposed by Los Alamos Medical Center

Enforcement Section — Significant Activities

Cordova & Sons Tire Recycling Facility

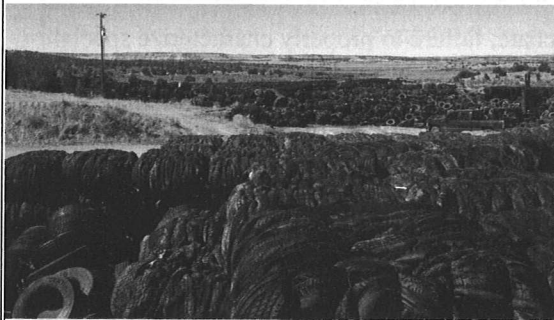
Sandoval County

On July 24, 2008, Secretary Curry issued an ACO revoking the operating permit for the Cordova & Sons Tire Recycling Facility, Cuba, New Mexico. The permit was revoked due to serious and continuing non-compliance with the terms and conditions of the facility's permit, resulting in the permanent storage of more than one million scrap tires (including at least 12,000 tire bales) and storage of scrap tires underneath or adjacent to high power electric lines.



Increased fire hazard due to the large number of tires, limited aisle width, vegetation growing among the tires

Given the seriousness of the violations and the potential for fire at the facility, the NMED issued two ACOs during 2002, compelling compliance and assessing a civil penalty of \$167,850. After years of negotiation and attempts to achieve voluntary compliance failed, Secretary Curry formally declared the facility to be a public health and environmental hazard in 2008. The Secretary's declaration authorized the use of Recycling and Illegal



Increased fire hazard—tires stored under electrical power lines and lack of sufficient aisle space

Dumping Grant Fund monies to abate the site, thereby bringing the tires into a safer manner of storage and providing for proper recycling and/or disposal.

On April 8, 2009, the NMED and Ernest Cordova, Owner, Cordova & Sons Tire Recycling Facility, entered into a settlement agreement in which the two outstanding ACOs were resolved and it was agreed that NMED could begin site clean-up operations through the use of a contracted engineering firm. The settlement agreement requires Mr. Cordova to pay a \$50,000 civil penalty in the event that he fails to comply with all of the terms of the settlement.

Southwest Abatement, Inc.

Lea County

On March 14, 2008, a Solid Waste Bureau enforcement officer responded to a complaint alleging the improper handling of asbestos during a residential roofing project in Las Cruces. Investigation confirmed the removal of asbestos-cement shingles by Southwest Abatement, Inc. The shingles, which were determined by laboratory analysis to contain greater than 1% asbestos, were intentionally broken, scraped and pushed off the roof without wetting or containerization. The broken shingles and dusts were allowed to fall onto the sidewalk below. Such handling caused the tiles to become regulated asbestos waste and created risk to human health, including local residents and passers-by, due to the high potential for airborne asbestos fibers, a known carcinogen. Upon the instruction of the Solid Waste Bureau's enforcement officer, removal, storage and handling procedures were revised to ensure proper demolition practices.



Public health hazard due to the improper demolition and handling of asbestos containing shingles

On March 12, 2009, Secretary Curry issued an ACO compelling compliance and assessing a civil penalty of \$19,000 to Southwest Abatement. On April 15, 2009, the NMED and Southwest Abatement entered into a settlement agreement, in which Southwest Abatement, Inc. agreed to pay a civil penalty of \$15,000.

Outreach Section — Significant Activities

2008 Operator Certification Training Courses



Solid Waste Bureau Chief, Auralie Ashley-Marx demonstrates ground water flow principals at the Landfill Operator Certification Course in Roswell

The SWB, in conjunction with the New Mexico Recycling Coalition and the New Mexico Chapter of the Solid Waste Association of North America, offers four operator certification courses twice a year. The training courses were developed by the New Mexico Environment Department, Solid Waste Bureau to assist facility operators in improving the safety, efficiency and code compliant practices of the facility. All certification courses include both classroom instruction and field exercises. The courses offered are: Landfill Operator Certification Course, Compost Facility Operator Certification

Course, Recycling Facility Operator Certification Course and Transfer Station Operator Certification Course. To become a certified operator; applicants must attend and complete the course, achieve a score of at least 70% on the certification exam, and meet the experience or educational requirements.

In 2008, courses were held in Albuquerque, Grants, Farmington, Roswell, Ruidoso, and Santa Fe. A total of 220 people attended the training courses. Once issued, operator certifications are valid for a period of three years from the issue date. Recertification requires completion of a certification course offered by the Department, completion of a Department approved alternate training course, or obtaining 24 hours of Department approved continuing education through seminars, conferences, or classes before the expiration of the current certification.



Class participants learn the technique for particle size and bulk density analysis in the Compost Operator Certification Course in Albuquerque

**A total of
220 students
attended the
SWB
Certification
Courses
offered in
2008**

Compost Facility	April 15 through 17	Ruidoso
	October 7 through 9	Albuquerque
Landfill	March 24 through 28	Roswell
	September 8 through 12	Farmington
Recycling Facility	May 13 through 15	Grants
	December 9 through 11	Santa Fe
Transfer Station	June 17 through 19	Ruidoso
	November 12 through 14	Farmington

Outreach Section — Significant Technical Assistance

Safety First Workshop



On May 8, 2008, the New Mexico Environment Department, in partnership with the Municipal League, Association of Counties, and Waste Management of New

Mexico hosted the “*No Excuses, Safety Comes First!*” workshop addressing safety in the workplace. The safety workshop was presented in response to the two New Mexico fatalities in the solid waste industry in 2007.

The 79 attendees came from municipal and county governments from across the state. Besides emphasizing the need to prioritize safety throughout solid waste operations, the audience was told of money that could be saved by having a lower workman’s compensation calculation factor.

The sobering presentation by Butch Tongate, Chief Occupational Health and Safety Bureau drives home the hazardous nature of the solid waste industry and has been incorporated into all of the operator certification courses.

Mortality Composting Workshops

On June 17, 2008, staff taught a Butcher Waste and Livestock Mortality Composting Workshop for the Taos County Economic Development Corporation (TCEDC). Ten participants attended the lecture session while 20 citizens were present at the field compost demonstration.

Participants included cattle, turkey, and rabbit meat producers from areas throughout New Mexico.



Firms that previously picked up and handled these wastes are no longer providing this service or have increased their costs significantly. Transportation costs and landfill disposal fees have also risen and are putting economic burdens on this industry.

Composting allows producers to manage butcher and mortality wastes promptly without having to wait for rendering trucks that charge ever increasing fees.

Senate Joint Memorial 11

Senate Joint Memorial 11 passed in the 2008 Legislative Session, requested that the Secretary of the Environment Department convene a task force to develop guidelines for environmentally preferable electronics procurement and recycling by state agencies of the executive branch. Procurement, use, and proper recycling of green electronics increases energy efficiency, reduces greenhouse gases, and prevents the release of toxic substances into the environment.



The task force was composed of representatives of the environment department, information technology, general services department, administrative office of the courts, legislative council service, New Mexico colleges and universities, recycling coalitions, private computer industry, electronic scrap recyclers and processors, and the state’s two national laboratories.

The task force reviewed the existing state electronic procurement procedures; studied programs in other states that may serve as a model; and documented actual amounts of electronics used in state agencies.

The SWB staff presented the findings and recommendations to the Radioactive and Hazardous Materials Committee on September 15, 2008, in Carlsbad; the Chief Information Officers’ Council on October 24, 2008, in Santa Fe; and the Information Technology and Telecommunications Oversight Committee on November 10, 2008, in Santa Fe.

Some of the Task Force’s recommendations include:

- Department of Information Technology and General Services Department should adopt a written directive and policy for procurement, use and recycling of electronics for all state agencies
- Adhere to the principals of Federal Electronic Challenge and State Electronic Challenge
- Mandate an employee education program
- Create written directives for state agencies regarding the end-of-life management of e-scrap

For a complete copy of the Task Force Report go to:
<http://www.nmenv.state.nm.us/swb/ElectronicScrap.htm>

Outreach Section — Significant Technical Assistance

Citizen Group Composting Outreach



In 2008, the number of citizens interested in backyard composting mushroomed. SWB staff provided presentations on the basics of backyard

composting to the citizen groups listed below. Lectures included methods of composting and types of food and yard waste that can be diverted from domestic household waste. In addition, demonstrations on compost bin construction were presented at each field exercise.

- Pecos Elementary Schools
- Taos County Economic Development Center
- St. John's College - Santa Fe
- Ladera Municipal Golf Course – Albuquerque
- City of Albuquerque Open Space Visitor's Center
- Bernalillo County Gutierrez-Hubbell House Open Space Visitor's Center
- Master Composter Program Planning – City of Albuquerque
- Dairy Producers Conference – Ruidoso
- Sierra Vista Growers – Las Cruces
- Urban Farm Festival – Bernalillo County
- Bandelier Trading Company – Food Composting
- Mariposa Montessori School – Santa Fe
- URS Engineering - Albuquerque
- New Mexico State Land Office-Santa Fe
- Community of Eldorado

Agency Assistance for Wood Waste Utilizations

SWB staff presented information on the development of compost specifications used by NMDOT and training to utilize wood waste for roadside reclamation projects.

- New Mexico Department of Transportation (NMDOT) Training Academy Roswell

SWB provided training explaining the principals of composting and ways to utilize forest thinning biomass for erosion control and compost production.

- United States Forest Service Collaborative Forest Restoration Program Grants

Native American Composting/Wood Waste Utilization

SWB staff provided assistance ranging from composting production methods to utilization of woodchips for erosion control projects at the



following Native American communities/events:

- Santo Domingo Pueblo
- Mescalero Apache Tribe
- Santa Ana Pueblo Environmental Fair and Biosolids Composting
- Acoma Pueblo
- Bureau of Indian Affairs South Pueblos Agency
- Zuni Pueblo Solid Waste Orientation
- Santo Domingo Bosque Residuals Composting
- Jicarilla Apache Tribe Solid Waste Orientation
- San Felipe Tribe Solid Waste Orientation
- Eight Northern Pueblos Solid Waste Orientation
- Pojoaque Pueblo Biosolids Co-Composting

Municipality Bio-Solids Co-Composting Projects

SWB Staff assisted the following facilities with their bio-solid co-composting projects that utilize diverted yard trimmings as a bulking agent



added to the bio-solids for the final compost product. A Compost Mixture Calculation Worksheet, in addition to the Moisture and Carbon/Nitrogen Ratio Calculator spreadsheet was provided to the facilities.

- City of Belen, Biosolids Co-Composting
- Los Alamos National Laboratories Biosolids Co-Composting
- City of Albuquerque - Cerro Colorado Landfill

NMDOT Uses Filter Socks in *Rail Runner* Project



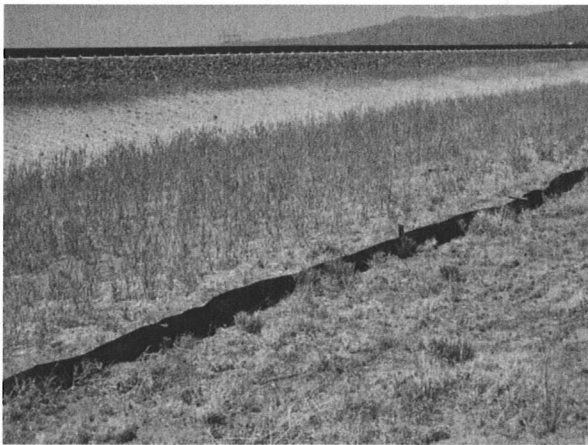
During 2008, the City of Albuquerque Water Utility Authority Compost Facility provided enough composted mulch (1,600 tons) for **71 miles** of filter socks for the *Rail Runner* Project. The feedstocks used to make the composted mulch came from the city's green waste and stable bedding from the State Fair Racetrack. The filter socks were used to control erosion and sediment migration along the *Rail Runner* railway.

Due to their many advantages, filter socks are starting to replace the use of silt fences throughout the state. Filter socks were utilized in this project instead of silt fences for the following reasons:

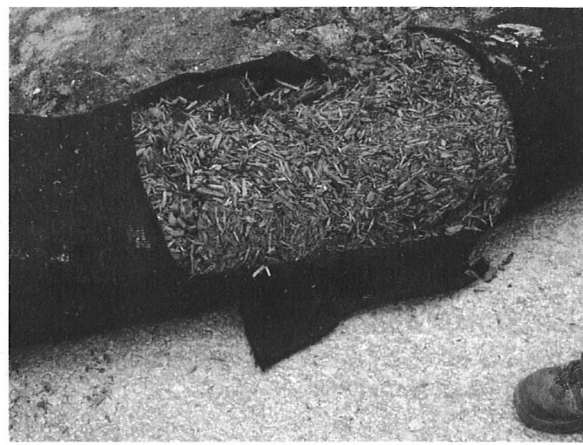
- Filter socks are more visually pleasing on roadways
- Filter socks require much less (if any) disposal costs at end of project (Silt fences require disposal of steel fence posts, wire netting, and plastic fencing)
- Filter socks may be left in place indefinitely if utilizing photodegradable or biodegradable netting
- Filter socks often are much more effective in sediment and erosion control
- Filter socks assist in pollution filtration via absorption and adsorption of contaminants in soil and storm water
- Filter socks have less of an impact on wildlife migration patterns
- Filter socks that get run over by vehicles or heavy equipment will still filter storm water runoff while silt fences are rendered useless if run over
- Silt fences require use of steel fence posts which puncture NMDOT tires and radiators

*Composted
Mulch from
Permitted
Facility
Used in
New
Mexico
Rail
Runner
Project*

In addition to the filter socks, 2,100 tons of unscreened compost were applied as compost blankets for slope stabilization along the railway.



Black filter sock installed along the
Rail Runner railway



Cut away of a filter sock
filled with composted mulch

Outreach Section — Significant Activities

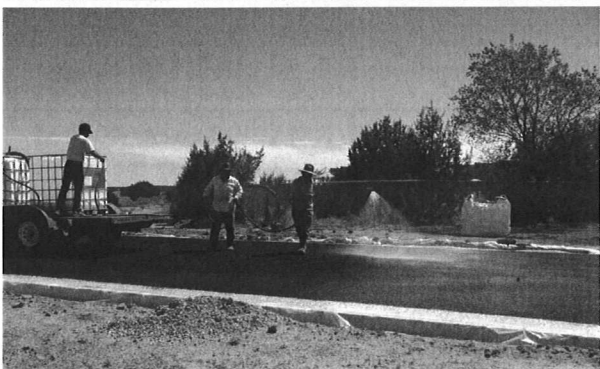
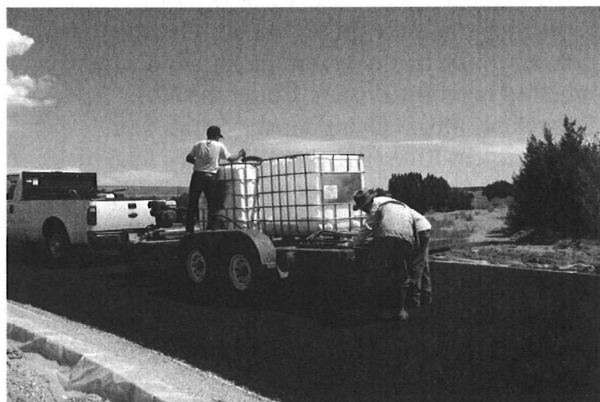
RAID Tire Grants Awarded in 2008

County	Applicant	Project Description	Project Amount
Torrance	La Merced del Pueblo de Chilili and Estancia Valley Solid Waste Authority	Abatement of a scrap tire stockpile on the Chilili Land Grant. Chilili worked with Estancia Valley SWA to abate the site and transport the scrap tires to State Rubber in Denver City, TX, for creation of ground and crumb rubber	\$15,200
Acoma Pueblo in Cibola County	Pueblo of Acoma	Construction of an athletic track made with poured-in-place ground rubber made from NM scrap tires	\$150,000
Sandoval	Sandoval County Public Works	Use of loose ground rubber for a playground at the Sunshine preschool in Rio Rancho	\$12,000
Cibola	Northwest NM Regional SWA	Engineered design and construction of a tire bale fence along the perimeter of the Red Rocks Landfill	\$120,329
TOTAL AWARDED			\$297,529

Tire Grant Projects Completed in 2008

Pueblo of Acoma

The Pueblo of Acoma, Environmental Protection Office, used RAID tire grant funds to construct a poured-in-place walking/running track for the Pueblo of Acoma community using ground rubber made from New Mexico scrap tires. At the track's opening ceremony, the Pueblo of Acoma awarded a certificate of appreciation to the New Mexico Environment Department.



Northwest NM Regional Solid Waste Authority

Northwest NM Regional Solid Waste Authority used RAID funds to design and construct a 1,320 foot tire bale wall around part of the perimeter of the Red Rocks Landfill in Thoreau. The design was signed and sealed by a professional engineer registered in New Mexico. The tire wall was made from 126,400 scrap tires collected and stockpiled at the landfill. The loose tires were made into 1,487 tire bales and stacked together to create the wall.



Outreach Section — Significant Activities

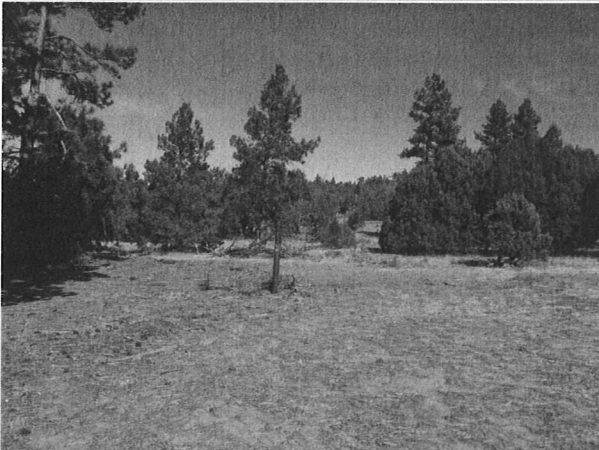
Tire Grant Projects Completed in 2008 *(Continued)*

Chilili / Estancia Valley Solid Waste Authority

La Merced del Pueblo de Chilili ("Chilili") and Estancia Valley Solid Waste Authority (EVSWA) were jointly awarded a grant to abate the stockpiles of scrap tires at Chilili. There were approximately 3,600 passenger tire equivalents (PTE's) in the stockpiles. EVSWA delivered its roll-offs to Chilili where they were filled with scrap tires by Chilili representatives. When full, the roll-offs were transported by EVSWA to the Torrance County Regional Landfill. At the landfill, tires were loaded into State Rubber and Environmental Solutions, LLC (State Rubber) transport containers and transported to State Rubber's tire recycling facility in Denver City, Texas. At that facility, ground and crumb rubber are produced for use in highway and other commercial applications.

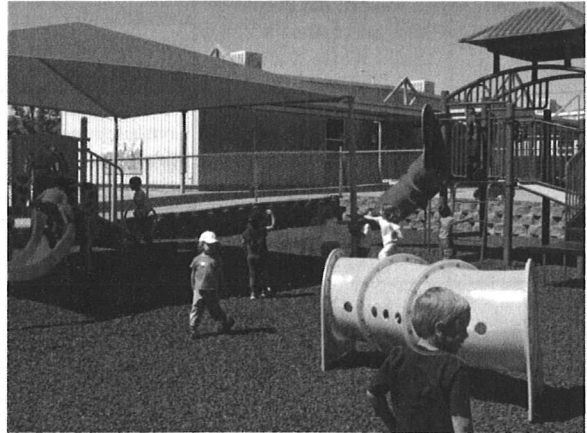


Scrap Tire Dump near Chilili before Clean-up



Area of the Tire Dump near Chilili after the Clean-up

Sandoval County Public Works Department



Sandoval County Public Works purchased loose ground rubber made from New Mexico scrap tires for use as fill material at the Shining Star Preschool playground. Children at the preschool love the rubber because it bounces so well.

SWB Tire Program Holds Twelve Workshops

SWB Outreach staff held 12 workshops throughout the state informing citizens about the new scrap tire hauler requirements and the newly required manifest system. Under the NM Recycling, Illegal Dumping and Scrap Tire Management Rule (RIDSTMR), every load of 10 scrap tires or more must be accompanied by a scrap tire manifest. In preparation for the workshops, announcements were sent to hundreds of tire dealers throughout the state. The workshops were attended by 251 landfill operators, vehicle fleet managers, automobile dealerships, tire dealers, and others.

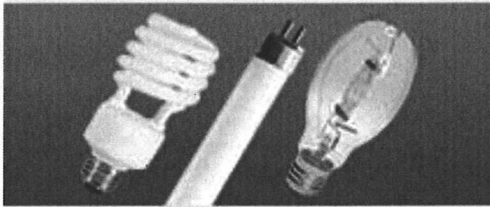
Scrap Tire Haulers

To be in compliance with the RIDSTMR, holders of scrap tire hauler registrations issued under the old tire regulations (20 NMAC 9.2) were required to register again by August 2, 2008. By the end of 2008, thirty scrap tire hauler had registrations under RIDSTMR. Annual reports showed that more than 1.1 million tires were hauled by those haulers from their points of generation to landfills, land reclamation sites, and tire recycling facilities in New Mexico and Texas.

Hazard Reduction Initiatives

Mercury Task Force — Pilot Spent Lamp Recovery Program

In the United States, approximately 650 million fluorescent lights are replaced annually, resulting in more than 28,000 pounds of mercury entering our environment. According to the US EPA, spent Fluorescent Lamps are the second largest source of



mercury in municipal refuse and one of the easiest to eliminate. In response to this issue,

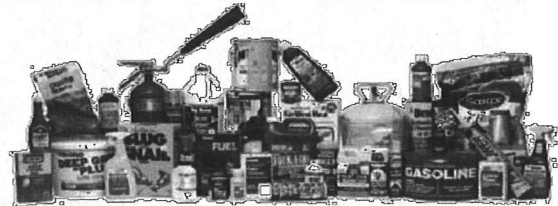
House Memorial 5 was passed in 2006, calling for the creation of a Mercury Reduction Task Force with representation from a broad spectrum of stakeholders. In 2007 a state Mercury Reduction Action Plan was developed.

Senator Peter Wirth, and the New Mexico Legislature allocated two special appropriations to NMED to specifically target the development of programs to reduce the release of mercury into New Mexico's environment. As a member of the Mercury Reduction Task Force, the Solid Waste Bureau was tasked with the implementation of a pilot spent fluorescent lamp recovery program. The goal of this program was to facilitate the collection and proper disposal of spent lamps from residential and some commercial sources in accordance with EPA guidelines for Universal Wastes.

Pilot Project Facility	Type of Program
Lincoln County Solid Waste Authority	On-site collection & Consolidated for recycling
Santa Fe Solid Waste Management Agency	On-site collection & Consolidated for recycling
Waste Management Of New Mexico, Orchard Street Recycling, Farmington	On-site collection, Off-site mail in program
Eldorado Transfer Station, Santa Fe, County	On-site collection, Off-site mail in program

This EPA classification limits the regulatory burden associated with spent lamps to encourage proper collection, handling, recovery, and recycling.

Household Hazardous Waste Management



Household Hazardous Waste (HHW) is hazardous waste that originates in the home (insecticides, cleaning products, paints, varnishes, etc.). In 2008, at least 15 communities in New Mexico attempted to collect this waste stream and either recycle, reuse, or treat and dispose of the HHW in a safe and environmentally friendly manner. (See list below)

Household Hazardous Waste Collection by Jurisdiction	Year- Round Collection	One-day Collection Events
City of Albuquerque/Rinchem	X	
City of Carlsbad		X
City of Farmington		X
City of Las Cruces	X	
City of Rio Rancho		X
City of Roswell	X	
City of Santa Fe		X
City of Silver City	X	
County of Santa Fe		X
County of Bernalillo/Rinchem	X	
County of Doña Ana	X	
County of Los Alamos		X
County of San Juan		X
Pueblo of Ohkay Owingeh		X
Pueblo of San Felipe		X

Environmental Justice — Public Participation — Tribal



Tribal Outreach:

On November 24, 2008, NMED's Tribal Liaison Officer, the SWB Chief, and members of the Outreach section met with 16 representatives of various Tribes and Pueblos from northern New Mexico. The day-long session covered a wide range of topics including scrap tires issues, special wastes, HHW, composting, enforcement issues, and recycling at Santa Fe's BuRRT facility. Every member from the SWB made a presentation.

At the request of Santa Anna Pueblo, SWB Outreach Section staff provided Household Hazardous Waste presentations on March 27 and April 6, 2008

Waste Management — Rio Rancho Landfill Community Meetings

Waste Management voluntarily held public community meetings on June 6, 2007, and April 8, 2008. A permit modification for a vertical expansion was requested, and concerns were raised by residents in the area that the landfill would



block views and property values would decrease. In response, Waste Management completed the first computer generated view shed analysis for a facility in New Mexico. The view shed shows the final elevation of the landfill, when closed. Based on the success of this tool, other facilities that have requested vertical expansions have been asked to complete the view shed analysis as a permit condition or prior to permitting for consideration by concerned parties.

Environmental Justice and Public Participation

To ensure public participation, Solid Waste Permit applicants are encouraged to hold one Community meeting prior to the Public Hearing to allow for comments and to obtain information about the permit application. All public notices and hearings for solid waste permit applications must comply with the requirements of the Solid Waste Act, 20.9.3.8 NMAC, and 20 NMAC

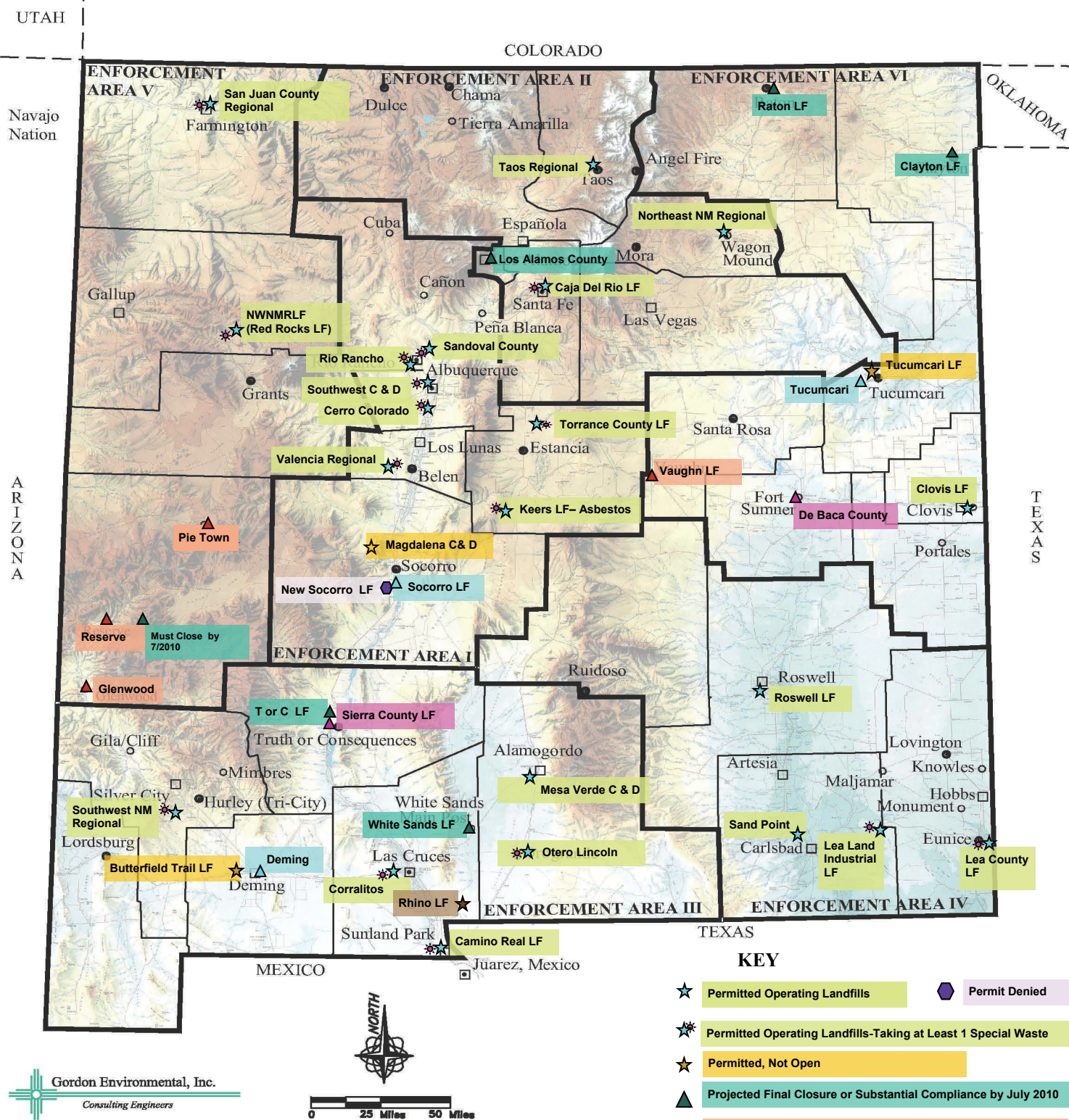
1.5— *Adjudicatory Procedures*

The public must be notified at least 30 days before a public hearing in the following manner:

- Publish the Notices of Application and Public Hearing in English and Spanish in two places in a local newspaper;
- Notice shall also be provided at least once in another media (radio, TV, flyers in billings);
- Send the Public Notice by Certified Mail to all property owners within 100 feet or 1/2 mile area, and
- All municipalities, counties, and Indian tribe or pueblo within 10 miles;
- Send the Public Notice by First Class Mail to any interested person of record; and
- Post the Public Notice at the solid waste facility, plus seven (7) additional publicly accessible and conspicuous places.

County	2009 Permitted Landfills	Contact and Phone
Bernalillo	Cerro Colorado Landfill	Johnny Pena 505-761-8300
Bernalillo	Southwest Landfill LLC (C & D)	Rafael Valdepena 505-242-2020
Chaves	Roswell Municipal Landfill	Juston Patty 575-624-6746
Curry	Clovis Landfill	Joel Garcia 575-769-2376
Dona Ana	Camino Real Landfill and Recycling Facility	Lee Wilson 575-589-9440
Dona Ana	Corralitos Landfill	Patrick Peck 575-528-3800
Dona Ana	Rhino Landfill	Not Open Yet
Eddy	Sand Point Landfill	Fabien Gomez 575-200-5642
Grant	Southwest NM Regional Landfill (Silver City)	C. J. Law 575-388-8051
Lea	Lea County Regional Landfill	Lee Wilson 575- 589-9440
Lea	Lea Land Inc. (Industrial LF)	Shelly Peterman 575-887-4048
McKinley	Red Rocks Regional Landfill	Kit South 505-862-8402
Mora	Northeast NM Regional Landfill	Inez May 575-668-2000
Otero	Mesa Verde Landfill (C&D)	Edward Davidson 575-437-2995
Otero	Otero/Lincoln County Regional Landfill	John McGoldrick 575-439-4355
Quay	Tucumcari Landfill (New)	Not Open Yet
San Juan	San Juan County Regional Landfill	Shote Forrester 505-334-1121
Sandoval	Rio Rancho Sanitary Landfill	Mike Foster 505-892-2055 ext. 203
Sandoval	Sandoval County Landfill	Robert (Bert) Sanchez 505-867-0814
Santa Fe	Caja del Rio Landfill	Randall Kippenbrock 505-424-1850
Socorro	Magdalena C&D Landfill	Not Open Yet
Taos	Taos Municipal Landfill	Francisco Espinoza 575-751-2000
Torrance	Torrance County/Bernalillo County Landfill	Joseph Ellis 505-384-4270
Torrance	Keers Asbestos Landfill	Brian Kilcup 505-892-2055
Valencia	Valencia County Regional Landfill and Recycle Facility	Mike Foster 575-892-2055
County	Registered Landfills	Name and Phone
Catron	Glenwood Landfill	Bill Aymar 575-772-2610
Catron	Pie Town Landfill	Bill Aymar 575-772-2610
Catron	Reserve Landfill	Bill Aymar 575-772-2610
Colfax	Raton Landfill	Pete Mileta Jr. 575-445-9551
De Baca	DeBaca County Landfill (Ft. Sumner)	Sam E. Boyd 575-355-2601
Guadalupe	Vaughn Landfill	Paul Madrid Jr. 575- 584-2301
Los Alamos	Los Alamos County Landfill (Closing in 2010)	Regina Wheeler 505-663-1920
Luna	Deming Landfill	Louis Jenkins 575-546-8848
Quay	Tucumcari Landfill (Existing)	Doug Powers 575-461-3451
Sierra	Sierra County Landfill	Janet Porter-Carrejo 575-894-6215
Sierra	T or C Landfill	Leonard Carrillo 575-894-6939
Socorro	Socorro Landfill	Jay Santillanes 575-835-4279

New Mexico Solid Waste Facilities Map — Status 2008



Disclaimer and Limitations:

1. GEI makes no warranty of any kind with respect to this Map.
2. This Map/File is not to be modified by any person for any reason.
3. User of Map assumes all risk and liability for using this Map.

Base Map used with permission of Gordon Environmental Inc.

Transfer Station and Collection Center Listed by County

County	Facility Name	Contact Name	Phone #	County	Facility Name	Contact Name	Phone #
Bernalillo	Albuquerque HHW Collection Center	Danny Zamora	505-345-3655	Dona Ana	Anthony Transfer Station	Freddie Aguirre	575-644-7079
Bernalillo	Don Reservoir Convenience Center	Steve Chacon	505-836-8757	Dona Ana	Butterfield Transfer Station	Freddie Aguirre	575-644-7079
Bernalillo	Eagle Rock Solid Waste Transfer Station	Johnny Pena	505-836-8757	Dona Ana	Garfield Transfer Station	Freddie Aguirre	575-644-7079
Bernalillo	Envirosolve Southwest Inc	John C. Kelly	505-873-0964	Dona Ana	Hatch Transfer Station	Freddie Aguirre	575-644-7079
Bernalillo	Keers C & D Transfer Station	Brian J. Kilcup	505-828-2650	Dona Ana	Hill Transfer Station	Freddie Aguirre	575-644-7079
Bernalillo	Kirtland AFB Transfer Station	John Pike	505-846-2751	Dona Ana	La Mesa Transfer Station	Freddie Aguirre	575-644-7079
Bernalillo	Montessa Park Convenience Center	Johnny Pena	505-873-6607	Dona Ana	La Union Transfer Station	Freddie Aguirre	575-644-7079
Bernalillo	Port-O-Let Division Small Transfer Station	Ricardo M. Ahumado	505-891-6963	Dona Ana	Mesquite Transfer Station	Freddie Aguirre	575-644-7079
Bernalillo	Southwest Abatement, Inc. (Kinney St.)	Tysan West	505-873-2967	Dona Ana	South Central Transfer/Convenience Center	Patrick Peck	575-528-3800
Catron	Alma Transfer Station	Bill Aymar	575-533-6423	Eddy	Artesia Transfer Station	Jimmy L. Bustamante	575-748-8812
Catron	Apache Transfer Station	Bill Aymar	575-533-6423	Grant	Cliff/Gila Transfer Station	C.J. Law	575-388-8051
Catron	Aragon Transfer Station	Bill Aymar	575-533-6423	Grant	Hachita Transfer Station	Jon P. Saari	575-436-2661
Catron	Luna Transfer Station	Bill Aymar	575-533-6423	Grant	Mimbres Transfer Station	C.J. Law	505-388-8051
Catron	Mogollon Transfer Station	Bill Aymar	575-533-6423	Grant	Tri City Transfer Station	C.J. Law	575-388-8051
Catron	Quemado Lake Transfer Station	Bill Aymar	575-533-6423	Guadalupe	Anton Chico Collection Center	Ernest Chavez	575-760-3043
Catron	Quemado Transfer Station	Bill Aymar	575-533-6423	Guadalupe	Dilia Collection Center	Manuel Baca	575-472-3306
Catron	Rancho Grande Transfer Station	Bill Aymar	575-533-6423	Guadalupe	La Loma Collection Center	Ernest Chavez	575-760-3043
Chaves	Berrendo SW Collection Center	Roger Cooper	575-624-6600	Guadalupe	Puerto de Luna Collection Center	Ernest Chavez	575-760-3043
Chaves	Burns SW Collection Center	Roger Cooper	575-624-6600	Guadalupe	Santa Rosa Transfer Station	Charles Garcia	575-472-3404
Chaves	Chaves County North Transfer Station	Roger Cooper	575-624-6600	Guadalupe	Tecolotito Collection Center	Ernest Chavez	575-760-3043
Chaves	Chaves County South Transfer Station	Roger Cooper	575-624-6600	Harding	Mosquero Transfer Station	Antonio Aragon	575-673-2322
Chaves	Midway SW Collection Center	Roger Cooper	575-624-6600	Harding	Roy Convenience Center	Lino Paiz	575-485-2541
Cibola	Bluewater Lake Transfer Station	Kit South	505-862-8402	Hidalgo	Animas Collection Station	Roger Ellis	575-542-9428
Cibola	Cibola County Transfer Station	Kit South	505-287-4150	Hidalgo	Cotton City Collection Station	Roger Ellis	575-542-9428
Cibola	Cubero Transfer Station	Kit South	505-862-8402	Hidalgo	Hidalgo County Transfer Station	Roger Ellis	575-542-9428
Cibola	Milan Small Transfer Station	Ricardo M. Ahumada	505-891-6963	Hidalgo	Rodeo Collection Station	Roger Ellis	575-542-9428
Cibola	Pinehill Convenience Center	Kit South	505-862-8402	Hidalgo	Virden Collection Station	Roger Ellis	575-542-9428
Cibola	San Mateo Convenience Center	Kit South	505-862-8402	Lea	Hobbs Convenience Center	Ron Gray	575-393-6571
Cibola	Seboyeta Transfer Station	Kit South	505-862-8402	Lea	Lovington Convenience Center	Willie Brown	575-704-9175
Colfax	Angel Fire Solid Waste Transfer Station	Butch Steinman	575-377-6967	Lea	Waste Management of South East New Mexico	Ron Gray	575-392-6571
Colfax	Cimarron Transfer Station	Mindy Cahil	575-376-2232	Lincoln	Alto Collection Center	Debra Ingle	575-378-4697
Colfax	Eagle Nest Collection Center	Lynda Perry	575-377-2486	Lincoln	Capitan Transfer Station	Debra Ingle	575-378-4697
Colfax	Maxwell Transfer Station	Elmer W. Chavez Sr.	575-375-2752	Lincoln	Carrizozo Convenience and Recycling Site	Debra Ingle	575-648-2371
Colfax	Springer Roll Off Transfer Station	Leticia Torres	575-483-2682	Lincoln	Greentree Transfer Station and Recycling Center	Debra Ingle	575-378-4697
Curry	Melrose Transfer Station	Daniel Burdine	575-253-4274	Lincoln	Historic Lincoln County Convenience Station	Debra Ingle	575-378-4697
Curry	Texico Transfer Station	Darrell Stanton	575-482-3314	Lincoln	LCSWA Direct Haul	Debra Ingle	575-378-4697

Transfer Station and Collection Centers Listed by County

County	Facility Name	Contact Name	Phone #		County	Facility Name	Contact Name	Phone #
Lincoln	LCSWA Ruidoso Downs Trans.Stat.and Recycling	Debra Ingle	575-378-4697		San Miguel	Camp Luna Transfer Station	Les Montoya	505-425-3664
Los Alamos	Overlook Convenience Center	Regina Wheeler	505-663-1920		San Miguel	City of Las Vegas Trans. Station and Recycling	Alvin Jiron	505-426-0351
Luna	Columbus Transfer Station	Nicole S. Lawson	575-531-2361		San Miguel	Gallinas Transfer Station	Les Montoya	505-425-3664
Luna	Cooks Peak Convenience Center	Martin Miller	575-546-2703		San Miguel	Kearny Transfer Station	Les Montoya	505-425-3664
Luna	Sunshine Convenience Station	Martin Miller	575-546-2703		San Miguel	Medita Convenience Center	Harold Garcia	505-425-3664
McKinley	McKinley County Transfer Station	Kit South	505-863-5776		San Miguel	Montezuma Transfer Station	Les Montoya	505-425-3664
Mora	Mora Transfer Station	Judy Finley	505-387-5279		San Miguel	North San Isidro Transfer Station	Les Montoya	505-425-3664
Mora	Ocate Convenience Center	David Montoya	505-387-5279		San Miguel	Pecos Transfer Station	Harold Garcia	505-425-3664
Mora	Watrous Transfer Station	Judy Finley	505-387-5279		San Miguel	Pendaries Transfer Station	Les Montoya	505-425-3664
Otero	Chaparral Convenience Station	Debra Ingle	575-378-4697		San Miguel	San Miguel Transfer Station	Harold Garcia	505-425-3664
Otero	La Luz Convenience Station	Debra Ingle	575-378-4697		San Miguel	Sapillo Transfer Station	Harold Garcia	505-425-3664
Otero	La Luz Transfer Station Direct Haul	Debra Ingle	575-378-4697		San Miguel	Villanueva Transfer Station	Harold Garcia	505-425-3664
Otero	La Velle Road Convenience Station	John Northrop	575-439-4109		Sandoval	Rio Rancho Small Transfer Station	Ricardo M. Ahumada	505-891-6963
Otero	La Velle South Convenience Station	Debra Ingle	575-378-4697		Sandoval	Road Runner Waste Service Inc (TS)	Lee Dante	505-867-9000
Otero	Oro Grande Convenience Station	Debra Ingle	575-378-4697		Santa Fe	Buckman Road Recycling and Transfer Station	Randall Kippenbrock	505-424-1850
Otero	Weed Convenience Station	Debra Ingle	505-434-1538		Santa Fe	La Cienega Collection Center	Oliver Barela	505-992-3068
Rio Arriba	Alcalde Transfer Station	Joe Lewandowski	505-747-8459		Santa Fe	Nambe Collection Center	Oliver Barela	505-992-3068
Rio Arriba	Canjilon Transfer Station	Joe Lewandowski	505-747-8459		Santa Fe	San Marcos Transfer Station	Oliver Barela	505-992-3068
Rio Arriba	Coyote Convenience Center	Joe Lewandowski	505-747-8459		Santa Fe	Stanley Convenience Center	Oliver Barela	505-992-3068
Rio Arriba	El Prado Convenience Station	Joe Lewandowski	505-747-8459		Socorro	La Joya Collection Center	Michael Jojola	575-838-0506
Rio Arriba	El Rito Transfer Station	Joe Lewandowski	505-747-8459		Socorro	Magdalena Solid Waste Collection and Recycling	Rita J Broadbuss	575-854-2261
Rio Arriba	La Canada de Los Angeles Convenience Station	Joe Lewandowski	505-747-8459		Socorro	Polvadera Collection Center	Michael L. Jojola	575-838-0506
Rio Arriba	La Loma Transfer Station	Joe Lewandowski	505-747-8459		Socorro	San Antonio Collection Center	Mike Jojola	575-835-0589
Rio Arriba	Tierra Amarilla Transfer Station	Joe Lewandowski	505-747-8459		Socorro	Veguita Collection Center	Mike Jojola	575-838-0506
Roosevelt	Portales Convenience Center	Larry Chavez	575-365-6666		Taos	Arroyo Hondo Transfer Station	Uvaldo Olonia	505-737-6335
San Juan	Blanco Transfer Station	Rusty Smith	505-632-3062		Taos	Cerro Transfer Station	Uvaldo Olonia	505-737-6335
San Juan	Cedar Hills Transfer Station	Rusty Smith	505-334-7328		Taos	Costilla Transfer Station	Uvaldo Olonia	505-737-6335
San Juan	Huerfano Transfer Station	Rusty Smith	505-320-8352		Taos	Ojo Caliente Transfer Station	Uvaldo Olonia	505-737-6335
San Juan	Kirtland Transfer Station	Rusty Smith	505-598-9472		Taos	Pilar Transfer Station	Uvaldo Olonia	505-737-6335
San Juan	La Plata Transfer Station	Rusty Smith	505-326-3454		Taos	Red River Compactor Transfer Station	Adrian Garcia	505-754-2277
San Juan	Lake Valley Transfer Station	Rusty Smith	505-320-3055		Taos	Red River Waste Water Plant Transfer Station	Adrian Garcia	575-754-6671
San Juan	Lee Acres Transfer Station	Rusty Smith	505-326-8808		Taos	Taos Ski Valley (Village of)	Ray Keen	575-776-8846
San Juan	Rodeo Collection Station	Rodger Ellis	505-547-9428		Taos	Tres Piedras Transfer Station	Uvaldo Olonia	505-737-6335
San Juan	Waterflow Transfer Station	Rusty Smith	505-598-5494		Union	Clayton Transfer Station	Fred Thelander	505-374-8331
San Miguel	Bernal Transfer Station	Les Montoya	505-425-3664		Valencia	Belen Transfer and Recycling Station	Mario Sisneros	505-864-8221
San Miguel	Big Mesa Transfer Station	Jack Lemons	505-403-6868		Valencia	Los Lunas Convenience Center	Betty Behrend	505-352-7629



Landfills Authorized to Accept Special Waste

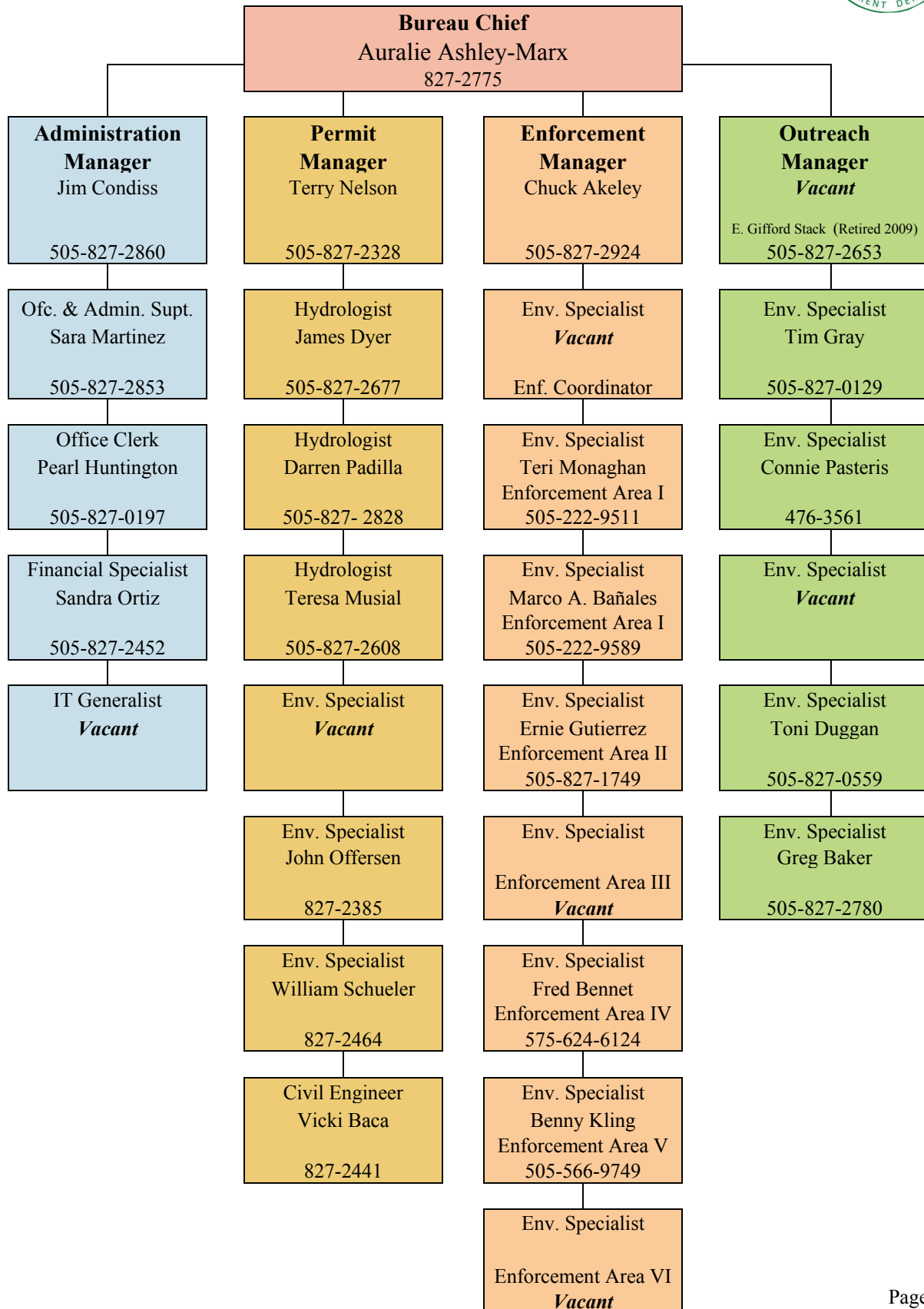
Special Waste Landfills	Contact	Phone #	Asbestos Waste	Ash	Chemical Spill Residue	Industrial Solid Waste	Offal	PCS	Sludge	TFCH
Caja Del Rio Landfill (Santa Fe)	Randall Kippenbrock-Director;	505-424-1850						X	X	
Butterfield Trail Regional Landfill (Deming-not open yet)	Louis Jenkins	575-546-8848				X*	X*	X*	X*	
Camino Real LF (Sunland Park)	Lee Wilson	575-589-9440				X		X	X	
Cerro Colorado LF (Albuquerque)	Johnny Pena	505-761-8300			X	X	X	X	X	X
Corralitos Landfill (Las Cruces)	Patrick Peck	575-528-3800							X	
Keers Asbestos LF (Mountainair)	Brian Kilcup	505-828-2650	X							
Lea County Regional Landfill (Eunice)	Lee Wilson	575-589-9440			X	X	X	X	X	X
Lea Land Inc. Industrial Solid Waste Landfill	Shelly Peterman	575-887-4048		X*		X		X		
Red Rocks Regional Landfill (Thoreau)	Kit South	575-862-8402				X		X	X	
Otero/Lincoln County Regional Landfill	John McGoldrick	575-439-4355	X					X	X	
Rio Rancho Sanitary Landfill	Mike Foster	505-892-2055		X	X	X	X	X	X	X
San Juan County Regional LF (Aztec)	Shote Forrester	575-334-1121			X	X	X	X	X	X
Sandoval County LF (Rio Rancho)	Bert Sanchez	505-867-0816						X	X	
Socorro Landfill	Jay Santillanes	575-835-4279							X	
Southwest New Mexico Regional Landfill (Silver City)	C.J. Law	575-388-8051					X			
Torrance County Regional Landfill (Moriarty)	Joseph Ellis	505-384-4270						X		
Truth or Consequences Landfill	Leonard Carrillo	575-894-6939							X	
Valencia Regional LF (Los Lunas)	Mike Foster	505-892-2055			X	X	X	X	X	X

X = Authorized To Accept

*** = Not accepting at this time**

Note: The landfills are authorized to receive the above indicated waste, but may choose not to accept it. Please contact each landfill to verify that special waste will be accepted.

**NEW MEXICO ENVIRONMENT DEPARTMENT
SOLID WASTE BUREAU
ORGANIZATIONAL CHART**





Prepared by the New Mexico Environment Department

**Solid Waste Bureau
1190 Saint Francis Drive
P.O. Box 5469**



Printed on Recycled Paper
Containing Post-Consumer Content