

High Pressure Safety Injection System

Chapter 11.1



Objectives

1. State the purpose of the high pressure safety injection (HPSI) system during the following plant conditions.
 - a. Normal operations
 - b. Injection phase following an accident
 - c. Recirculation phase following an accident
2. State the purpose of the following major components:
 - a. Refueling water tank (RWT)
 - b. Recirculation sump

Objectives

3. List the start signals for the high pressure safety injection system.
4. State the system realignments that occur when a recirculation actuation signal (RAS) is received.

Figure 11.1-1 HPSI Flow Diagram

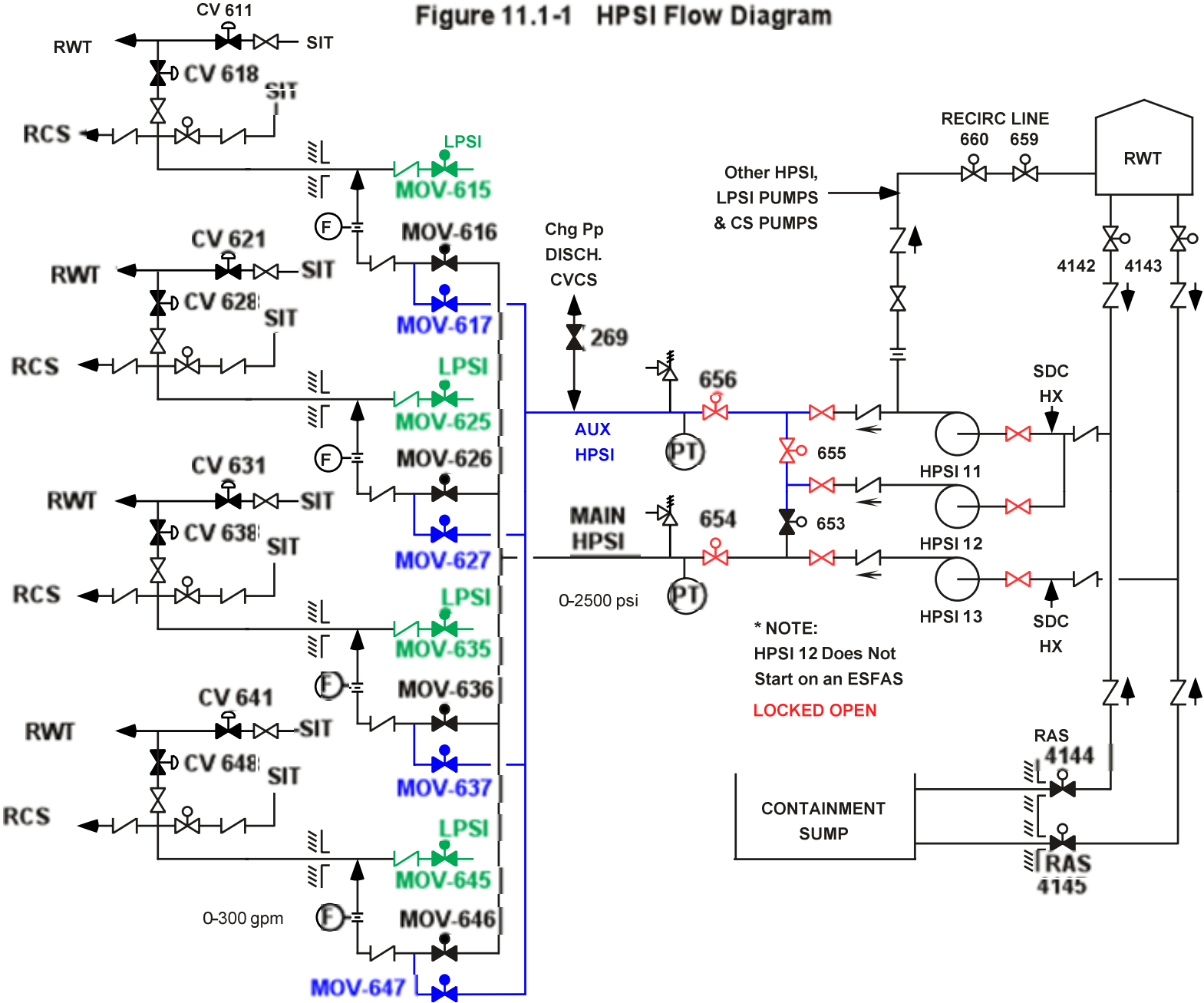


Figure 11.1-2 Refueling Water Tank

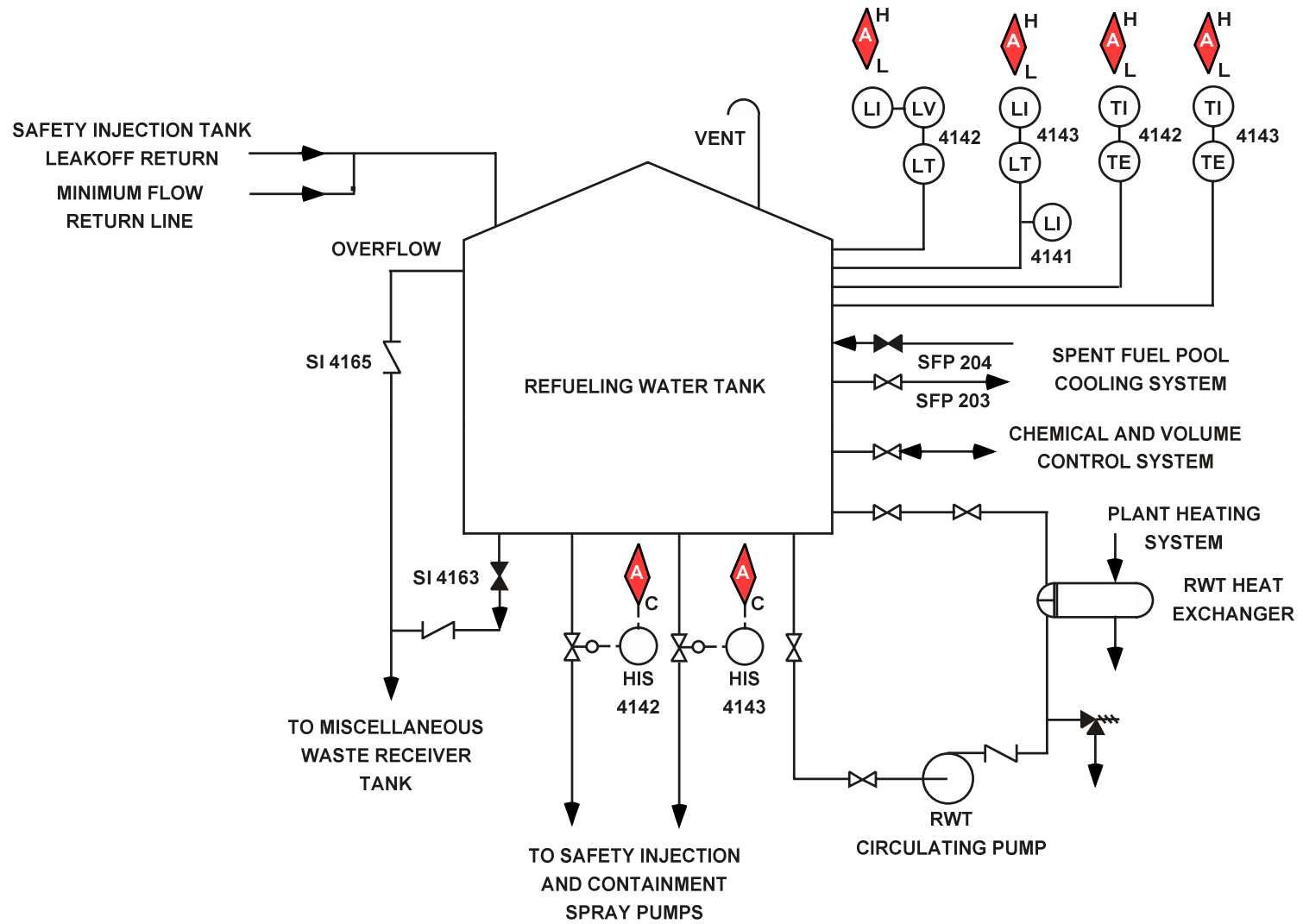


Figure 11.1-1 Safety Injection Flow

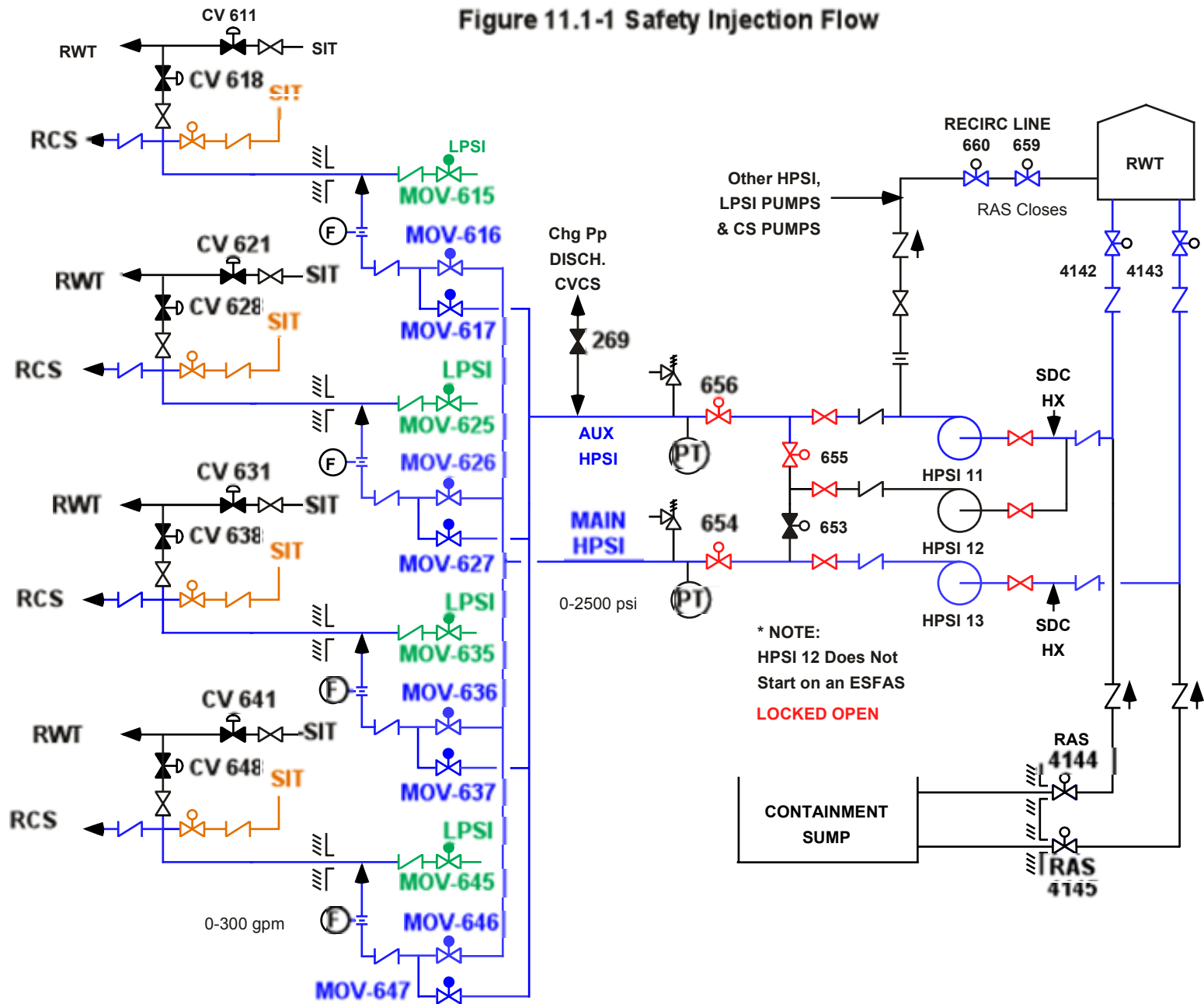
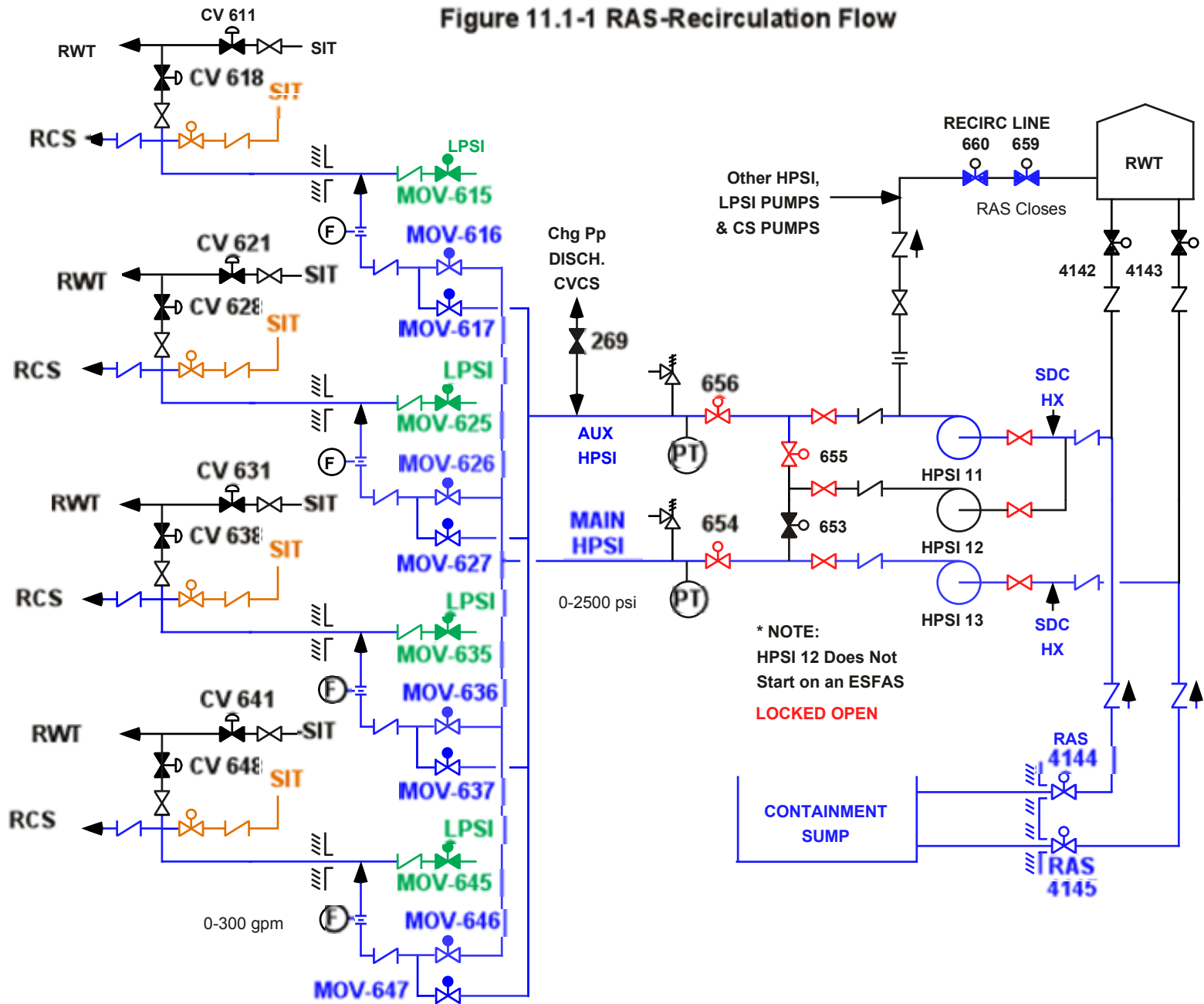


Figure 11.1-1 RAS-Recirculation Flow



The End