

GENERAL NOTES

- FOR TYPICAL DETAILS AND LEGEND SEE DWG. No. M-500
- PROVIDE DECK CLAMP DEVICE IF NEEDED TO COMPLETE R.D. INSTALLATION.
- FLOOR DRAIN SHALL BE STAINLESS STEEL (TYPE 304) W/CLOSURE PLUG AS MANUFACTURED BY: ZURN INDUSTRIES, INC. No. Z-540-76 OR JOSAM MANUFACTURING CO. No. 7020-QS-9S PURCHASE BY FIELD.

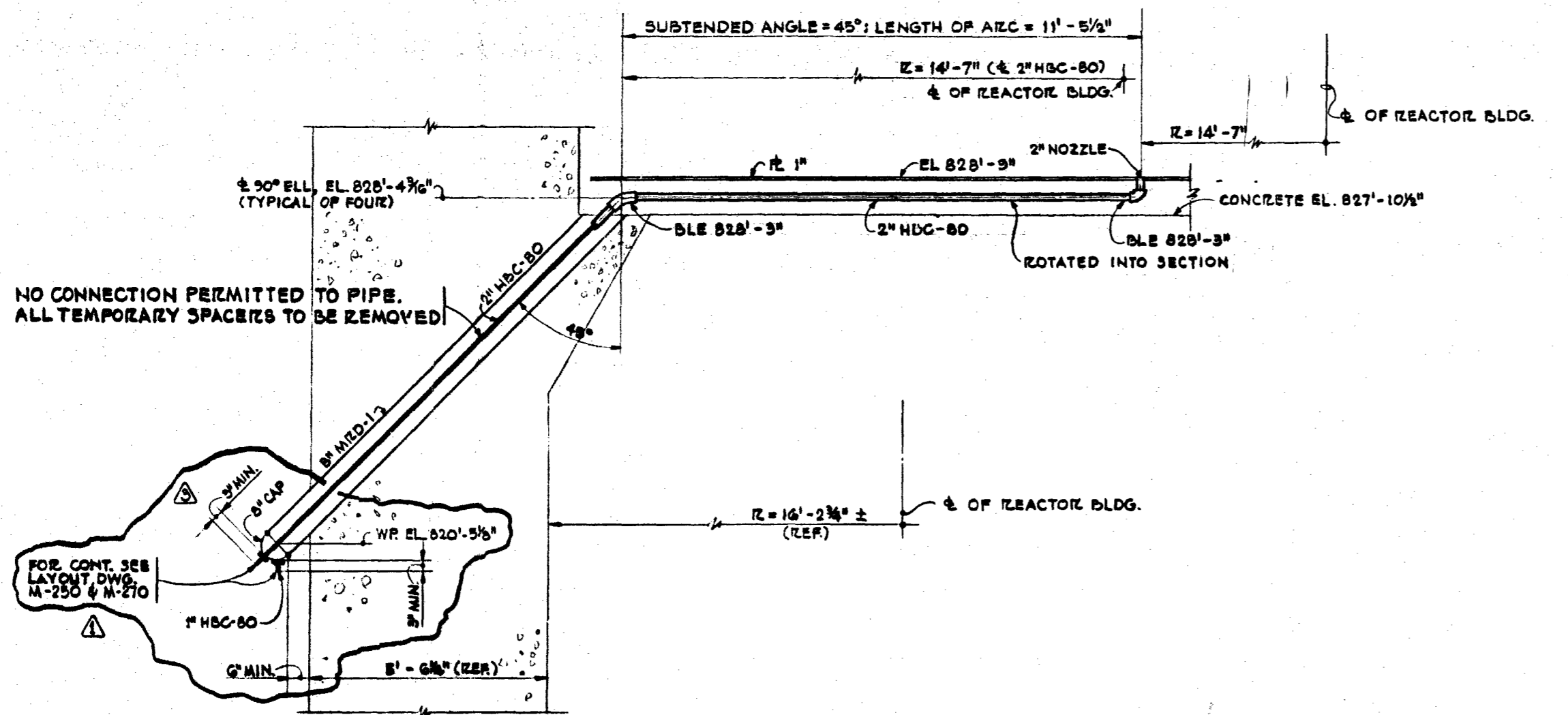
REFERENCE DRAWINGS

- M-500 DRAINAGE DETAILS AND LEGEND
- M-524 DRAINAGE - REACTOR BLDG. AREA 5 PLAN AT EL. 833'-6"
- G-496 REACTOR BLDG. REACTOR WELL, SPENT FUEL & WASTE SEPARATOR, POOL SECTIONS & DETAILS SM.2
- M-250 AREA-4 PIPING PLAN BELOW EL. 833'-0"
- M-270 AREA-5 PIPING PLAN BELOW EL. 833'-0"

REGULATORY DOCKET FILE COPY

Docket # 50-531
 Control # 8705190381
 Date 05-11-87 of Document
 REGULATORY DOCKET FILE

FOR INFORMATION ONLY



SECTION A-A-A
 SCALE: 1/4" = 1'-0"
 TYPICAL AT AZ. 43°, 128°, 270° & 335°

6-14-72	INCORPORATE DCN NO. 1 AND REVISIONS AS SHOWN.	FL	SM	FD	SL
1-31-72	REVISED AS SHOWN	FL	SM	FD	SL
11-18-72	INCORPORATE DCN NO. 1 AND ADDED REFERENCE DRAWINGS	FL	SM	FD	SL
10-22-72	ISSUED FOR CONSTRUCTION	SM	FD	SL	FL

BECHTEL
 SAN FRANCISCO

DUANE ARNOLD ENERGY CENTER - UNIT NO. 1
 IOWA ELECTRIC LIGHT AND POWER COMPANY
 CEDAR RAPIDS, IOWA

DRAINAGE
 REACTOR BLDG. - AREA No. 4
 PLAN AT EL. 833'-6"

JOB No.	DRAWING No.	REV.
7884	M-517	3

Attachment 4
 Bechtel Drawing,
 BECH-M-517,
 Revision 3

30X MICROREPRODUCTION DO NOT SCALE

8705190414

This drawing and the design it covers are the property of BECHTEL. They are hereby loaned and are to be reproduced, copied, loaned, exhibited, or used except in the limited way and within the limits given by this loan to the borrower.