

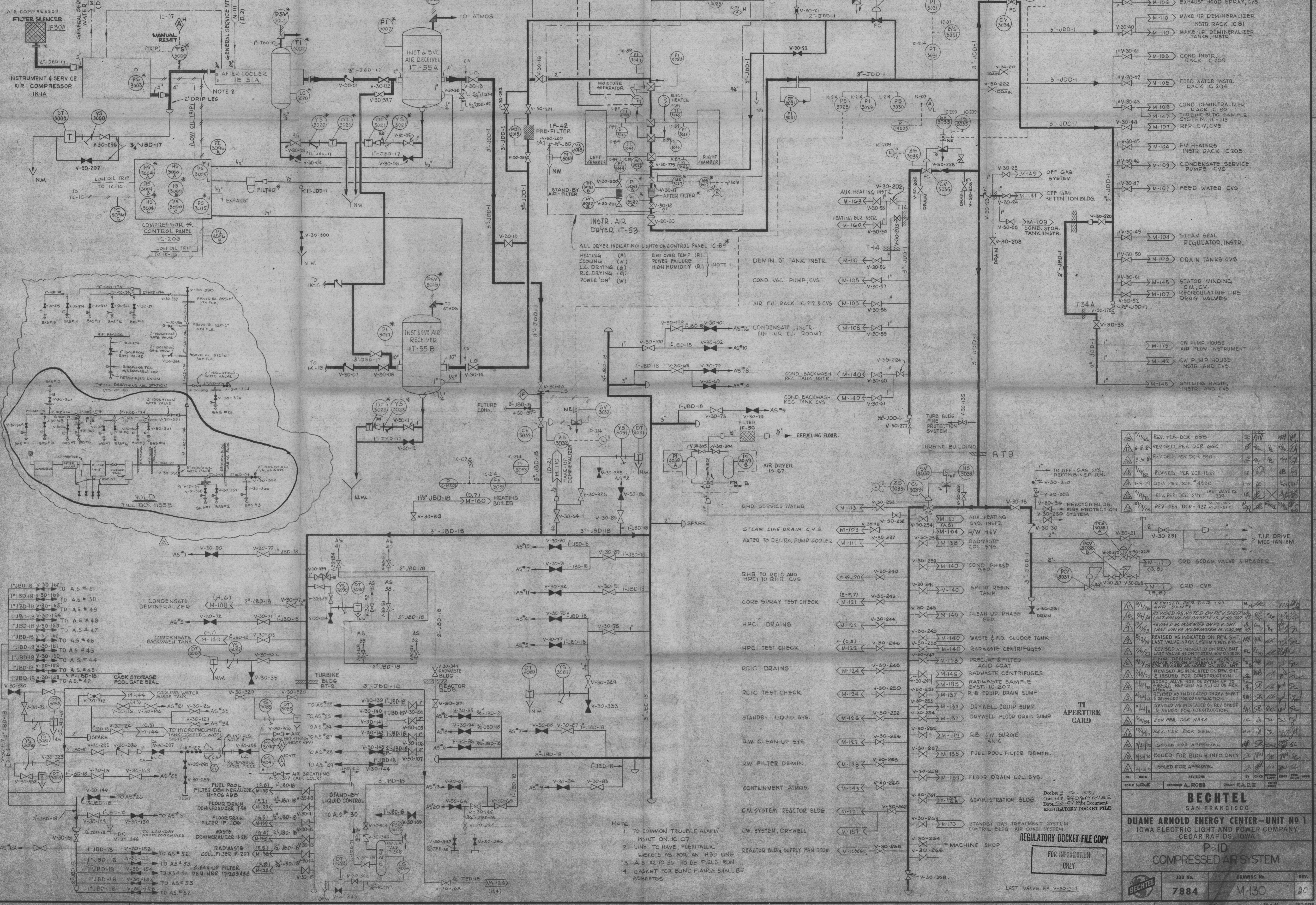
This drawing and the design it covers are the property of BECHTEL. They are hereby loaned and on the borrower's express agreement that they will not be reproduced, copied, leased, exhibited, or used except in the limited way and under the conditions permitted by the lender to the borrower.

COMPRESSOR COMPONENT SIMILARITY TABLE

COMPRESSOR	1K-1A	1K-1B	1K-1C	AFTER COOLER DRAINS	DT-3020	DT-3021	DT-3022
FILTER SILENCER	IF-30A	IF-30B	IF-30C	YS-3020	YS-3021	YS-3022	
AFTER COOLER	1E-51A	1E-51B	1E-51C	CHECK VALVE	V-30-01	V-30-02	V-30-03
LOPS	PS-3003	PS-3003	PS-3003	AIR SUPP VALVE	V-30-02	V-30-02	V-30-02
HATS	TS-3000	TS-3010	TS-3020		V-30-29	V-30-29	V-30-29
AFTER COOLER PSV	PSV3001	PSV3011	PSV3021		V-30-27	V-30-27	V-30-27
AFTER COOLER LG	LA-3020	LA-3022	LA-3024		V-30-03	V-30-03	V-30-03
DRIP LEG DRAIN	DT-3000	DT-3011	DT-3021		V-30-04	V-30-04	V-30-04
DRIP LEG DRAIN	YS-3000	YS-3011	YS-3021	AFTER COOLER DISCH. TEMP.	TI-3002	TI-3012	TI-3022

BREATHING AIR STATION LIST

BAS #	LOCATION	BAS #	LOCATION
BAS #1	SOUTH TORUS ROOM HATCH AREA	BAS #14	REFUELING FLOOR NEAR D-10-1
BAS #2	SOUTH TORUS MANWAY HATCH AREA	BAS #17	REFUELING FLOOR NEAR B3-11-1
BAS #3	STEAM TUNNEL	BAS #18	REFUELING FLOOR NEAR H-7-3
BAS #4	SKYWELL		
BAS #5	DRYWELL		
BAS #6	NORTH TORUS ROOM HATCH AREA		
BAS #7	NORTH TORUS MANWAY HATCH AREA		
BAS #8	TO NORTH CONDENSER FLOOR AREA		
BAS #9	TO REACTOR FEED PUMP AREA		
BAS #10	HEATER BAY		
BAS #11	TO DRESSOUT AREA		
BAS #12	ELECTROPOLISHING ROOM		
BAS #13	RWCY HEAT EXCHANGER ROOM		
BAS #15	REFUELING FLOOR NEAR 2-5-2		
BAS #16	REFUELING FLOOR NEAR D-3-1		



ALL DRYER INDICATING LIGHTS ON CONTROL PANEL IC-84

HEATING (A)
 BEB OVER TEMP (R)
 COOLING (W)
 LE DRYING (G)
 RE DRYING (G)
 POWER ON (W)

- NOTE
- TO COMMON TROUBLE ALARM POINT ON IC-07
 - LINE TO HAVE FLEXITAIL GASKETS AS FOR AN HBD LINE
 - A.S. 42 TO 56 TO BE FIELD RUN
 - GASKET FOR BLIND FLANGE SHALL BE ABEETOS.

REV.	DATE	DESCRIPTION	BY	CHKD.
1/1/76		REV. PER DCR-858		
2/1/76		REVISED PER DCR 640		
3/1/76		REVISED PER DCR 840		
4/1/76		REVISED PER DCR-1032		
5/1/76		REV. PER DCR #452		
6/1/76		REV. PER DCR-210		
7/1/76		REV. PER DCR-427		

REV.	DATE	DESCRIPTION	BY	CHKD.
8/1/76		REVISED PER DCR 123		
9/1/76		REVISED AS NOTED ON REV SHEET LAST VALVE NO 0151515 V-30-310		
10/1/76		REVISED AS NOTED ON REV SHEET LAST VALVE NO 0151515 V-30-310		
11/1/76		REVISED AS NOTED ON REV SHEET LAST VALVE NO 0151515 V-30-310		
12/1/76		REVISED AS NOTED ON REV SHEET LAST VALVE NO 0151515 V-30-310		
13/1/76		REVISED AS NOTED ON REV SHEET LAST VALVE NO 0151515 V-30-310		
14/1/76		REVISED AS NOTED ON REV SHEET LAST VALVE NO 0151515 V-30-310		
15/1/76		REVISED AS NOTED ON REV SHEET LAST VALVE NO 0151515 V-30-310		
16/1/76		REVISED AS NOTED ON REV SHEET LAST VALVE NO 0151515 V-30-310		
17/1/76		REVISED AS NOTED ON REV SHEET LAST VALVE NO 0151515 V-30-310		
18/1/76		REVISED AS NOTED ON REV SHEET LAST VALVE NO 0151515 V-30-310		
19/1/76		REVISED AS NOTED ON REV SHEET LAST VALVE NO 0151515 V-30-310		
20/1/76		REVISED AS NOTED ON REV SHEET LAST VALVE NO 0151515 V-30-310		

BECHTEL
 SAN FRANCISCO

DUANE ARNOLD ENERGY CENTER - UNIT NO 1
 IOWA ELECTRIC LIGHT AND POWER COMPANY
 CEDAR RAPIDS, IOWA

P&ID
 COMPRESSED AIR SYSTEM

JOB No. 7884
 DRAWING No. M-130
 REV. 00