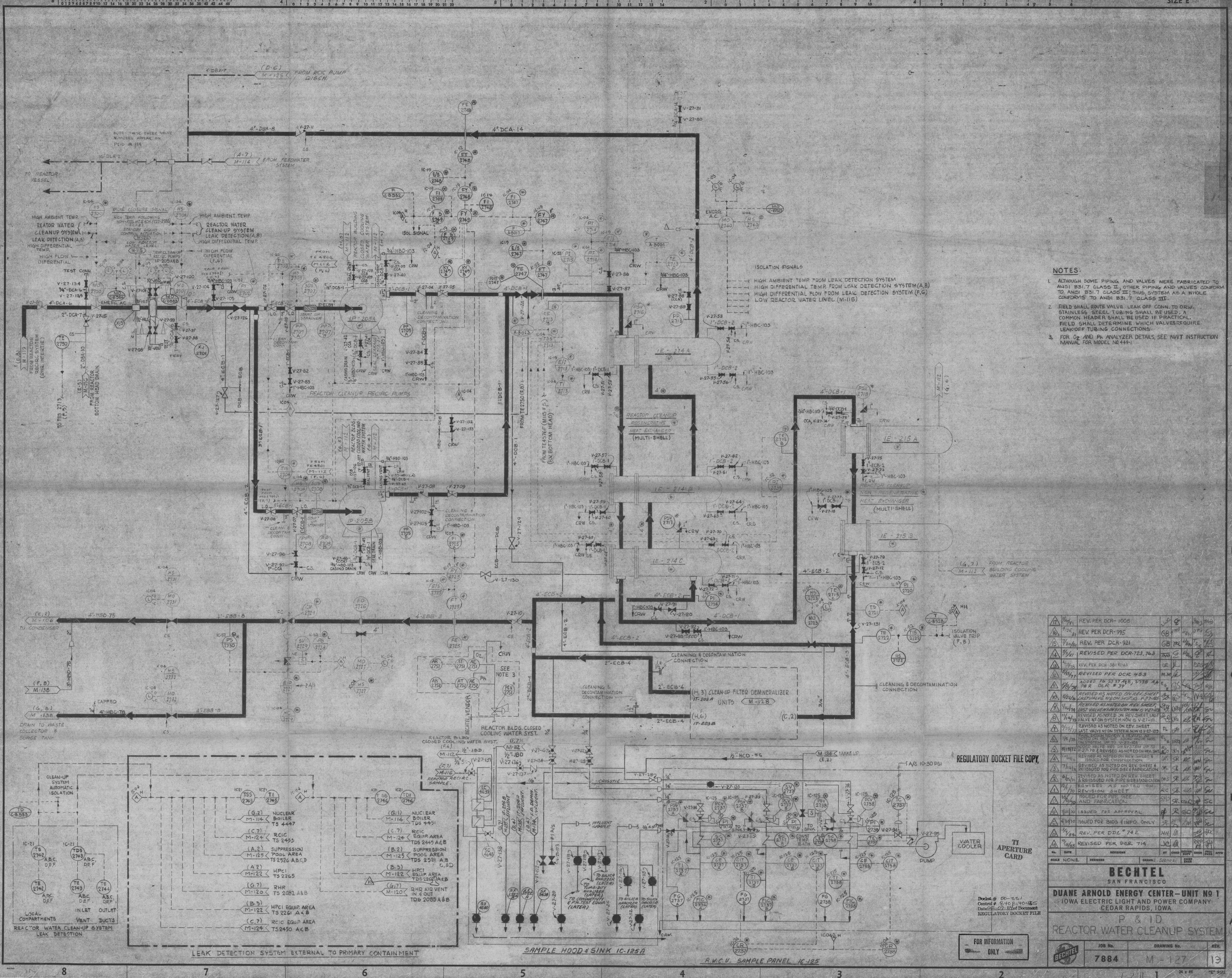


This drawing and the design it covers are the property of BECHTEL. They are hereby loaned and on the borrower's express agreement that they will not be reproduced, copied, loaned, exhibited, or used except in the limited way and purpose consented to by the letter to the borrower.



- NOTES:**
- ALTHOUGH SOME PIPING AND VALVES WERE FABRICATED TO ANSI B31.7 CLASS II, OTHER PIPING AND VALVES CONFORM TO ANSI B31.7 CLASS III; THIS SYSTEM AS A WHOLE CONFORMS TO ANSI B31.7 CLASS III.
 - FIELD SHALL ROUTE VALVE LEAK OFF CONN. TO DRW. STAINLESS STEEL TUBING SHALL BE USED. A COMMON HEADER SHALL BE USED IF PRACTICAL. FIELD SHALL DETERMINE WHICH VALVES REQUIRE LEAKOFF TUBING CONNECTIONS.
 - FOR O₂ AND PA ANALYZER DETAILS, SEE HWIT INSTRUCTION MANUAL FOR MODEL NO.449-1.

NO.	DATE	REVISION	BY	CHKD	APPV
1	10/21/61	REV. PER DCR-1006	JG	SC	SC
2	11/26/61	REV. PER DCR-995	GB	ML	SC
3	1/26/62	REV. PER DCR-921	GB	ML	SC
4	3/14/62	REVISED PER DCR-123, 763	TAD	SC	SC
5	4/17/62	REV. PER DCR-381	M.M.	SC	SC
6	5/17/62	REVISED PER DCR #53	M.M.	SC	SC
7	6/14/62	ADDED TO 27-21B, 27-38, 4A PER DCR #39	E	SC	SC
8	7/11/62	REVISED AS NOTED ON REV. SHEET	SC	SC	SC
9	8/14/62	REVISED AS NOTED ON REV. SHEET	SC	SC	SC
10	9/11/62	REVISED AS NOTED ON REV. SHEET	SC	SC	SC
11	10/17/62	REVISED AS NOTED ON REV. SHEET	SC	SC	SC
12	11/14/62	REVISED AS NOTED ON REV. SHEET	SC	SC	SC
13	12/11/62	REVISED AS NOTED ON REV. SHEET	SC	SC	SC
14	1/8/63	REVISED PER DCR 714	JO	SC	SC

REGULATORY DOCKET FILE COPY

TI APERTURE CARD

WATER COOLER PUMP

FOR INFORMATION ONLY

BECHTEL
SAN FRANCISCO

DUANE ARNOLD ENERGY CENTER - UNIT NO 1
IOWA ELECTRIC LIGHT AND POWER COMPANY
CEDAR RAPIDS, IOWA

P & ID
REACTOR WATER CLEANUP SYSTEM

Job No. **7884** DRAWING No. **M-127** REV. **13**