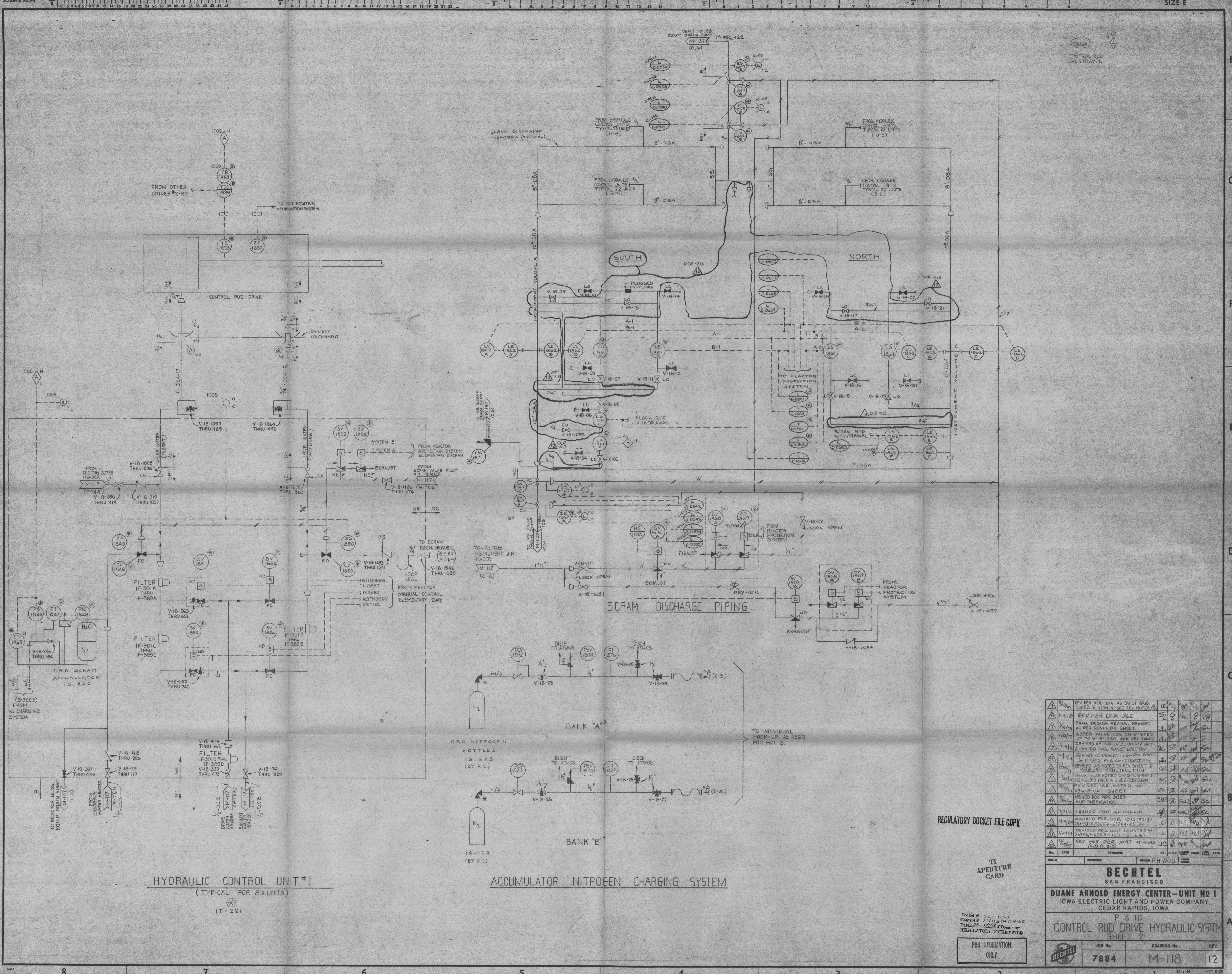


This drawing and the design it covers are the property of BECHTEL. They are hereby loaned and on the borrower's express agreement that they will not be reproduced, copied, loaned, exhibited, or used except in the limited way and private use permitted by any written consent given by the lender to the borrower.



HYDRAULIC CONTROL UNIT #1
(TYPICAL FOR 89 UNITS)
IT-221

ACCUMULATOR NITROGEN CHARGING SYSTEM

NO.	DATE	REVISIONS	BY	CHECK	DESIGN	ENGR	DRWG	APPR
1	10/10/72	REV PER DCR-1014 AS BUILT AND LOCKED (E-3) ONLY - SEE REV. NOTES	DE	PH	WOO	SC	SC	SC
2	11/21/72	REV PER DCR-362	SC	PH	WOO	SC	SC	SC
3	1/10/73	FINAL DESIGN REVIEW, REVISED AS PER REVISION SHEET	SC	PH	WOO	SC	SC	SC
4	2/17/73	ADDED VALVE NOS. ON SYSTEM UP TO V-18-1630 - SEE REV SHEET	SC	PH	WOO	SC	SC	SC
5	4/11/73	REVISED AS INDICATED ON REV SHEET & ISSUED FOR CONSTRUCTION	PH	SC	WOO	SC	SC	SC
6	10/11/73	REVISED AS NOTED ON REV SHEET & ISSUED FOR CONSTRUCTION	PH	SC	WOO	SC	SC	SC
7	11/13/73	REVISED AS NOTED ON REV SHEET & ISSUED FOR CONSTRUCTION	PH	SC	WOO	SC	SC	SC
8	1/10/74	REVISED AS NOTED ON REV SHEET & ISSUED FOR CONSTRUCTION	PH	SC	WOO	SC	SC	SC
9	2/17/74	REVISED AS NOTED ON REV SHEET & ISSUED FOR CONSTRUCTION	PH	SC	WOO	SC	SC	SC
10	4/10/74	REVISED PER DCR 1009 (A2-4) (A1, A2, 1-3, 1.3-4) (D, 2-5) (E, 5)	LC	PH	WOO	SC	SC	SC
11	1/10/74	REV PER DCR 1047 AT 02000 (G, 2-5)	JC	PH	WOO	SC	SC	SC

REGULATORY DOCKET FILE COPY

TI APERTURE CARD

BECHTEL
SAN FRANCISCO

DUANE ARNOLD ENERGY CENTER—UNIT NO 1
IOWA ELECTRIC LIGHT AND POWER COMPANY
CEDAR RAPIDS, IOWA

P & ID
CONTROL ROD DRIVE HYDRAULIC SYSTEM
SHEET 2

JOB No.	DRAWING No.	REV.
7884	M-118	12

FOR INFORMATION ONLY

Docket # 50-221
Control # 640 B140425
Data # 68-07264 Document
REGULATORY DOCKET FILE