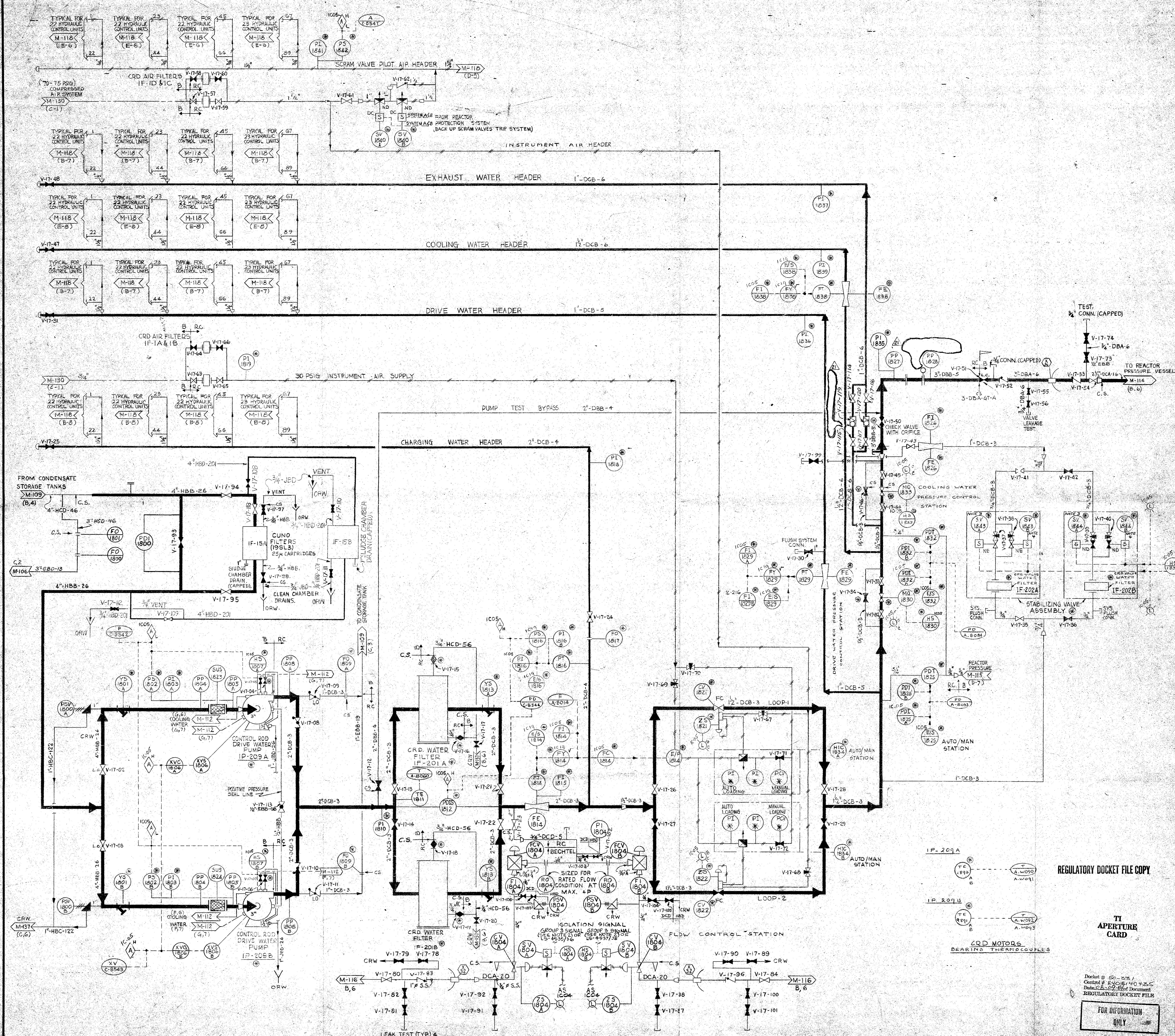


This drawing and the design it covers are the property of BECHTEL. They are hereby loaned and on the borrower's express agreement that they will not be reproduced, copied, loaned, exhibited, or used except in the limited way and purpose intended by the lender to the borrower.



- NOTE:**
1. LINES CLASSED HBB, DCB, HEC, BD & DBB UP TO THE CHANGE OF SPEC. AT V-17-51 ARE D311 ON THIS P&ID.
  2. GROUP 2 ISOLATION SIGNALS FOR SVB04A/B OPENS ON UPSCALE FUEL POOL EXHAUST RAD SIGNALS, REACTOR BLDG VENT#1 RAD, OR EQUIP FAILURE, DEWELL HI PRESSURE, OR REACTOR LOW WATER (SCRAM) LEVEL.
  3. SV-1843(A) CLOSURE ON ROD INSERT WHEN "A" STABILIZING VALVES ARE SELECTED. SV-1844 CLOSURE WHEN "B" STABILIZING VALVES SELECTED.
  4. SV-1843(B) CLOSURE ON ROD WITHDRAWAL WHEN "B" STABILIZING VALVES ARE SELECTED. SV-1844 CLOSURE WHEN "A" STABILIZING VALVES SELECTED.

NO.	DATE	DESCRIPTION	BY	CHKD	APPV
1	10/1/78	REVISED PER DCR-507	SW	PL	RS
2	10/1/78	REV. PER DCR-668	SW	PL	RS
3	10/1/78	REV. PER DCR-502	SW	PL	RS
4	10/1/78	REVISED PER DCR-558	SW	PL	RS
5	10/1/78	REVISED PER DCR-502	SW	PL	RS
6	10/1/78	REVISED PER REVISION SHEET	SW	PL	RS
7	10/1/78	REVISED PER REVISION SHEET	SW	PL	RS
8	10/1/78	REVISED PER REVISION SHEET	SW	PL	RS
9	10/1/78	REVISED PER REVISION SHEET	SW	PL	RS
10	10/1/78	REVISED PER REVISION SHEET	SW	PL	RS
11	10/1/78	REVISED PER REVISION SHEET	SW	PL	RS
12	10/1/78	REVISED PER REVISION SHEET	SW	PL	RS
13	10/1/78	REVISED PER REVISION SHEET	SW	PL	RS
14	10/1/78	REVISED PER REVISION SHEET	SW	PL	RS
15	10/1/78	REVISED PER REVISION SHEET	SW	PL	RS
16	10/1/78	REVISED PER REVISION SHEET	SW	PL	RS
17	10/1/78	REVISED PER REVISION SHEET	SW	PL	RS
18	10/1/78	REVISED PER REVISION SHEET	SW	PL	RS
19	10/1/78	REVISED PER REVISION SHEET	SW	PL	RS
20	10/1/78	REVISED PER REVISION SHEET	SW	PL	RS
21	10/1/78	REVISED PER REVISION SHEET	SW	PL	RS
22	10/1/78	REVISED PER REVISION SHEET	SW	PL	RS
23	10/1/78	REVISED PER REVISION SHEET	SW	PL	RS
24	10/1/78	REVISED PER REVISION SHEET	SW	PL	RS
25	10/1/78	REVISED PER REVISION SHEET	SW	PL	RS
26	10/1/78	REVISED PER REVISION SHEET	SW	PL	RS
27	10/1/78	REVISED PER REVISION SHEET	SW	PL	RS
28	10/1/78	REVISED PER REVISION SHEET	SW	PL	RS
29	10/1/78	REVISED PER REVISION SHEET	SW	PL	RS
30	10/1/78	REVISED PER REVISION SHEET	SW	PL	RS
31	10/1/78	REVISED PER REVISION SHEET	SW	PL	RS
32	10/1/78	REVISED PER REVISION SHEET	SW	PL	RS
33	10/1/78	REVISED PER REVISION SHEET	SW	PL	RS
34	10/1/78	REVISED PER REVISION SHEET	SW	PL	RS
35	10/1/78	REVISED PER REVISION SHEET	SW	PL	RS
36	10/1/78	REVISED PER REVISION SHEET	SW	PL	RS
37	10/1/78	REVISED PER REVISION SHEET	SW	PL	RS
38	10/1/78	REVISED PER REVISION SHEET	SW	PL	RS
39	10/1/78	REVISED PER REVISION SHEET	SW	PL	RS
40	10/1/78	REVISED PER REVISION SHEET	SW	PL	RS
41	10/1/78	REVISED PER REVISION SHEET	SW	PL	RS
42	10/1/78	REVISED PER REVISION SHEET	SW	PL	RS
43	10/1/78	REVISED PER REVISION SHEET	SW	PL	RS
44	10/1/78	REVISED PER REVISION SHEET	SW	PL	RS
45	10/1/78	REVISED PER REVISION SHEET	SW	PL	RS
46	10/1/78	REVISED PER REVISION SHEET	SW	PL	RS
47	10/1/78	REVISED PER REVISION SHEET	SW	PL	RS
48	10/1/78	REVISED PER REVISION SHEET	SW	PL	RS
49	10/1/78	REVISED PER REVISION SHEET	SW	PL	RS
50	10/1/78	REVISED PER REVISION SHEET	SW	PL	RS

REGULATORY DOCKET FILE COPY

TI APERTURE CARD

FOR INFORMATION ONLY

**BECHTEL**  
SAN FRANCISCO

**DUANE ARNOLD ENERGY CENTER—UNIT NO 1**  
IOWA ELECTRIC LIGHT AND POWER COMPANY  
CEDAR RAPIDS, IOWA

P & I D  
**CONTROL ROD DRIVE HYDRAULIC SYSTEM**  
SHEET 1

JOB NO.	DRAWING NO.	REV.
7884	M-117	21