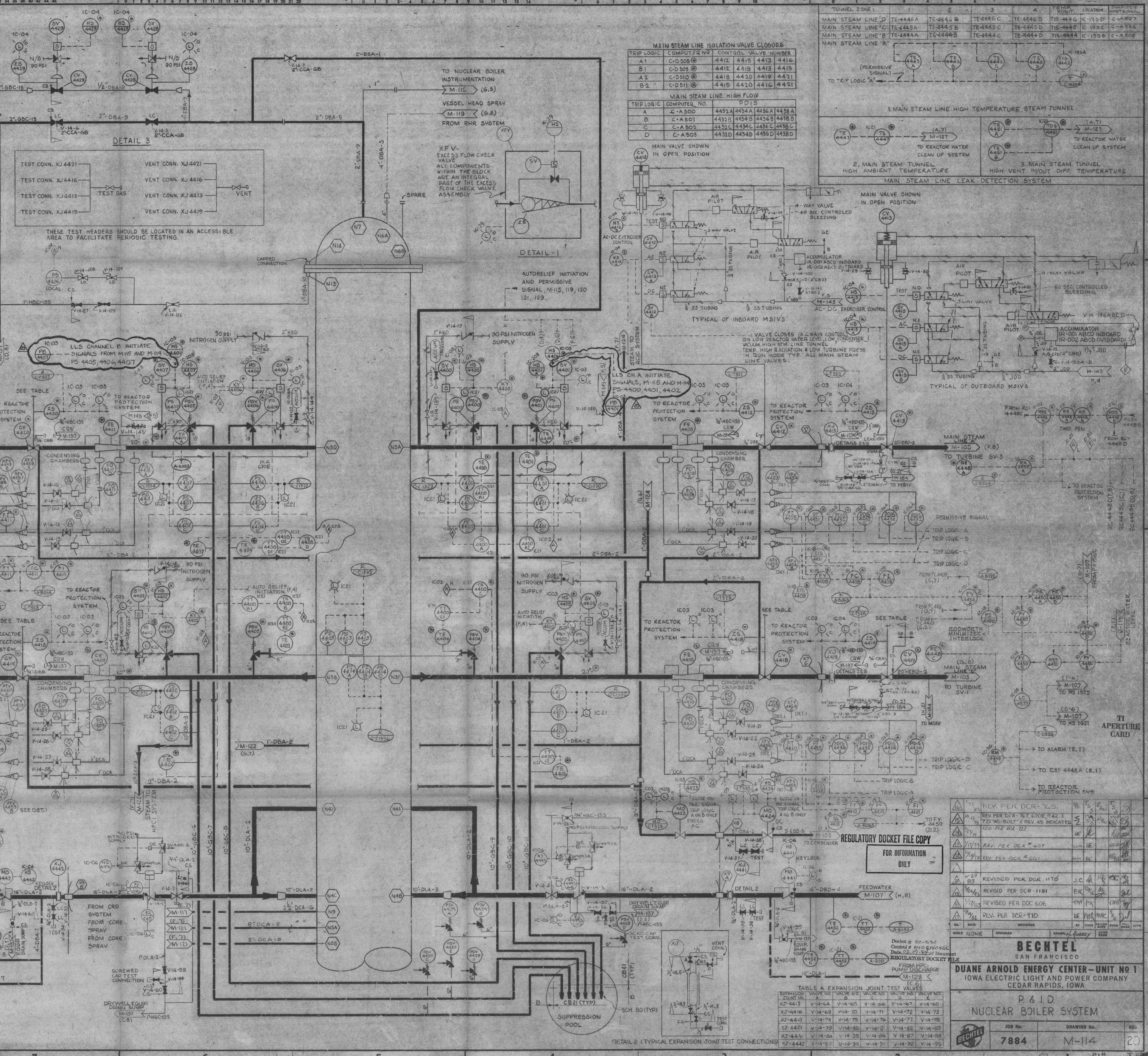


This drawing and the design it covers are the property of BECHTEL. They are loaned and on the borrower's express agreement that they will not be reproduced, copied, loaned, exhibited, or used except in the limited way and for the limited purpose stated in the letter to the borrower.

INSTRUMENTATION — MAIN STEAM ISOLATION VALVES

CV	HS	VALVE NR	SV	LOC
4412	4412 A	97	98	4412 A
4412	4412 B	99	100	4412 C
4413	4413 A	29	30	4413 A
4413	4413 B	31	32	4413 B
4413	4413 C	31	32	4413 C
4415	4415 A	101	102	4415 A
4415	4415 B	103	104	4415 B
4416	4416 A	105	106	4416 A
4416	4416 B	107	108	4416 B
4418	4418 A	109	110	4418 A
4418	4418 B	111	112	4418 B
4419	4419 A	113	114	4419 A
4419	4419 B	115	116	4419 B
4420	4420 A	117	118	4420 A
4420	4420 B	119	120	4420 B
4421	4421 A	121	122	4421 A
4421	4421 B	123	124	4421 B
4421	4421 C			4421 C



TEMP. MONIT. LOCATION. COMPLETE INSTRUMENTATION

TEMP. MONIT.	LOCATION.	COMPLETE INSTRUMENTATION
TE-4446 A	IC-193 D	C-A-507
TE-4445 B	IC-193 C	C-A-506
TE-4444 C	IC-193 B	C-A-505
TE-4444 D	IC-193 A	

TRIP LOGIC COMPUTER NO. CONTROL VALVE NUMBER

TRIP LOGIC	COMPUTER NO.	CONTROL VALVE NUMBER
A 1	C-D 506 @	4412 4415 4413 4416
B 1	C-D 505 @	4412 4418 4413 4419
A 2	C-D 510 @	4418 4420 4419 4421
B 2	C-D 511 @	4418 4420 4416 4421

TRIP LOGIC COMPUTER NO. PDIS

TRIP LOGIC	COMPUTER NO.	PDIS
A	C-A 500	4432 A 4434 A 4436 A 4438 A
B	C-A 501	4433 B 4434 B 4436 B 4438 B
C	C-A 502	4433 C 4434 C 4436 C 4438 C
D	C-A 503	4432 D 4434 D 4436 D 4438 D

REV. PER DCR-105

REV.	PER DCR-105	REV. PER DCR-767	REV. PER DCR-721	REV. PER DCR-707	REV. PER DCR-661	REV. PER DCR-1178	REV. PER DCR-1181	REV. PER DCR-606	REV. PER DCR-710
10/13									
10/13									
10/13									
10/13									
10/13									
10/13									
10/13									
10/13									
10/13									
10/13									

BECHTEL
SAN FRANCISCO

DUANE ARNOLD ENERGY CENTER — UNIT NO 1
IOWA ELECTRIC LIGHT AND POWER COMPANY
CEDAR RAPIDS, IOWA

P. & I. D.
NUCLEAR BOILER SYSTEM

JOB No. **7884** DRAWING No. **M-114** REV. **20**

TABLE A EXPANSION JOINT TEST VALVES

EXPANSION JOINT	VALVE NO.	VALVE NO.	VALVE NO.	VALVE NO.	VALVE NO.
XJ-4413	V-14-64	V-14-65	V-14-66	V-14-67	V-14-68
XJ-4416	V-14-69	V-14-70	V-14-71	V-14-72	V-14-73
XJ-4419	V-14-74	V-14-75	V-14-76	V-14-77	V-14-78
XJ-4421	V-14-79	V-14-80	V-14-81	V-14-82	V-14-83
XJ-4441	V-14-84	V-14-85	V-14-86	V-14-87	V-14-88
XJ-4442	V-14-89	V-14-90	V-14-91	V-14-92	V-14-93